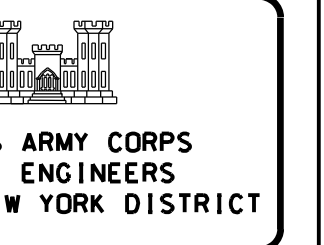
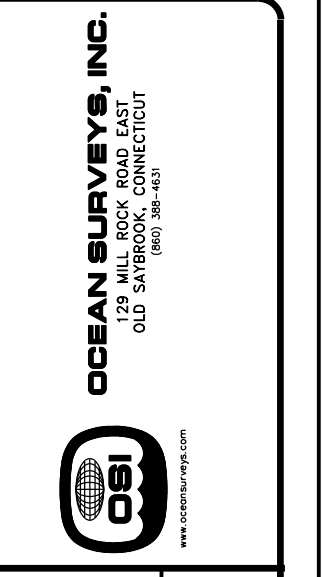


GREEN BELL W/LIGHT #3
EBB
24 MARCH 2013

MATCH TO SHEET 2





DATE OF SURVEY:
21-29 MARCH 2013
FILE NO.: 1138
PROJECT NO.: 1396

ONE INCH = 200 FEET
FIELD BOOKS:

APPROVED: B. WALLACE
APPROVED: R. SMITH
APPROVED: D. CLARKE
APPROVED: F. POSITOLONE
DATE: 23 APRIL 2013

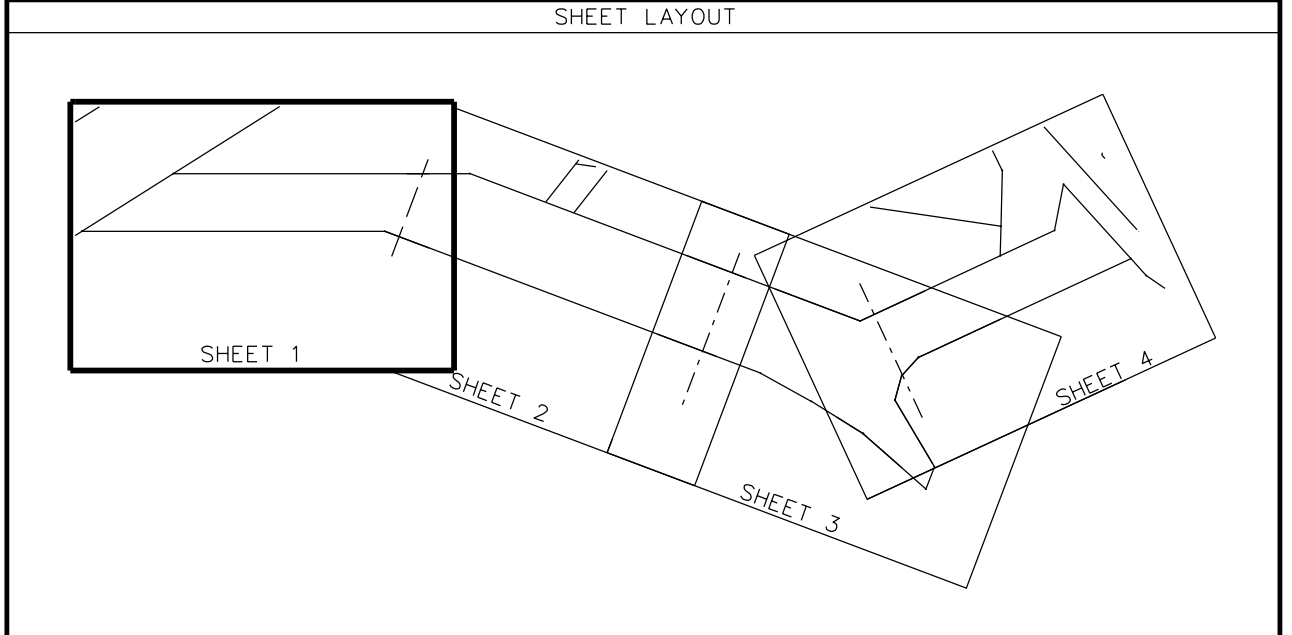
DEPARTMENT OF THE ARMY
CORPS OF ENGINEERS
NEW YORK, NEW YORK 10278

OPERATIONS DIVISION
SURVEY SECTION
OCEAN-CDES

BAY RIDGE AND RED HOOK CHANNELS, NEW YORK
CONDITION SURVEY

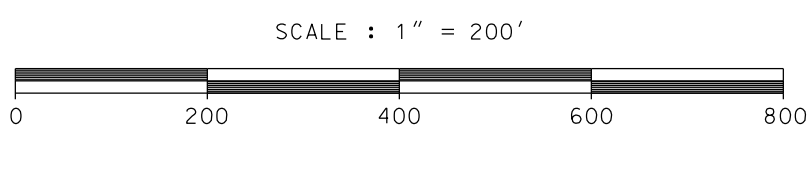
VH-101
SHEET 1 OF 4

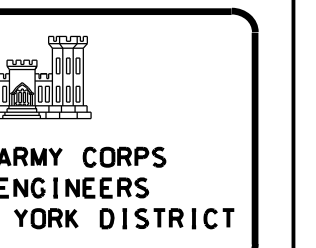
- NOTES:
- 1. GRID SYSTEM IS IN FEET AND IS THE NEW YORK LONG ISLAND STATE PLANE COORDINATE SYSTEM, NAD83.
 - 2. DEPTHS ARE IN FEET AND ARE REFERENCED TO MEAN LOWER LOW WATER (MLLW) BASED ON "S. SIMON" WHICH HAS AN ELEVATION OF 7.26 FEET NAVD 88 AS PROVIDED BY THE ARMY CORPS OF ENGINEERS.
 - 3. THE PLANE OF MEAN LOWER LOW WATER (MLLW) IS 2.7 - 2.8 FEET BELOW NAVD 88. THIS VALUE WAS DETERMINED USING NOAA'S VDATUM MODEL (VERSION 3.11).
 - 4. THE PLANIMETRICS SHOWN ON THIS MAP ARE FOR ORIENTATION PURPOSES ONLY.
 - 5. THE DATA DEPICTED ON THIS MAP ARE REPRESENTATIVE OF A LARGER DATA SET.
 - 6. THE DATA DEPICTED ON THIS MAP WERE COLLECTED USING PROJECT CLASSIFICATION - GENERAL, AS DEFINED IN EM 1110-2-1003.
 - 7. THE SURVEY SHOWN WAS CONDUCTED BY OCEAN SURVEYS, INC. USING THE FOLLOWING: SURVEY VESSEL: R/V ABLE II; ECHOSOUNDER: RESON SEABAT 8125; NAVIGATION SYSTEM: APPLANIX PDS MV IN REAL TIME KINEMATIC (RTK) MODE; SURVEY ACQUISITION SOFTWARE: HYPACK VERSION 2012A; SURVEY PROCESSING SOFTWARE: HYPACK MULTIBEAM EDITOR VERSION 2012A.
 - 8. THE INFORMATION PRESENTED ON THIS DRAWING REPRESENTS THE RESULTS OF A SURVEY PERFORMED BY OCEAN SURVEYS, INC. (OSI) ON 21-29 APRIL 2013 AND CAN ONLY BE CONSIDERED AS INDICATING THE CONDITIONS EXISTING AT THAT TIME. REUSE OF THIS INFORMATION BY CLIENT OR OTHERS BEYOND THE SPECIFIC SCOPE OF WORK FOR WHICH IT WAS ACQUIRED SHALL BE AT THE SOLE RISK OF THE USER AND WITHOUT LIABILITY TO OSI.



BENCHMARK	
BENCHMARK:	S. SIMON
ELEVATION:	7.26' NAVD 1988

LOCAL CONTROL DATA		
BENCHMARK:	VAL PIER 2 NORTH	TBM BROOKLYN
ELEVATION:	7.40' NAVD 1988	6.35' NAVD 1988





OPERATIONS DIVISION
SURVEYING SECTION
NEW YORK DISTRICT
NEW YORK, NEW YORK

DATE: 23 APRIL 2013
FILE NO.: 138
PROJECT NO.: 1398

DATE: 23 APRIL 2013
FILE NO.: 138
PROJECT NO.: 1398

DATE: 23 APRIL 2013
FILE NO.: 138
PROJECT NO.: 1398

DATE: 23 APRIL 2013
FILE NO.: 138
PROJECT NO.: 1398

DATE: 23 APRIL 2013
FILE NO.: 138
PROJECT NO.: 1398

DATE: 23 APRIL 2013
FILE NO.: 138
PROJECT NO.: 1398

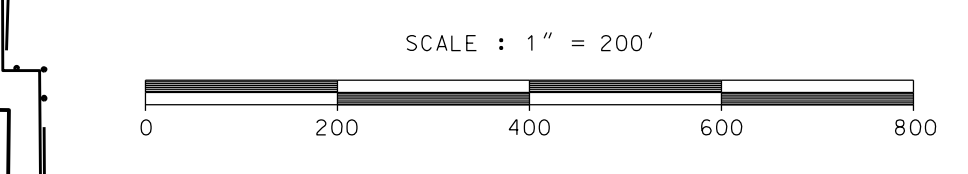
DATE: 23 APRIL 2013
FILE NO.: 138
PROJECT NO.: 1398

DATE: 23 APRIL 2013
FILE NO.: 138
PROJECT NO.: 1398



GREEN BELL W/LIGHT #5
24 MARCH 2013

GREEN CAN #7
24 MARCH 2013



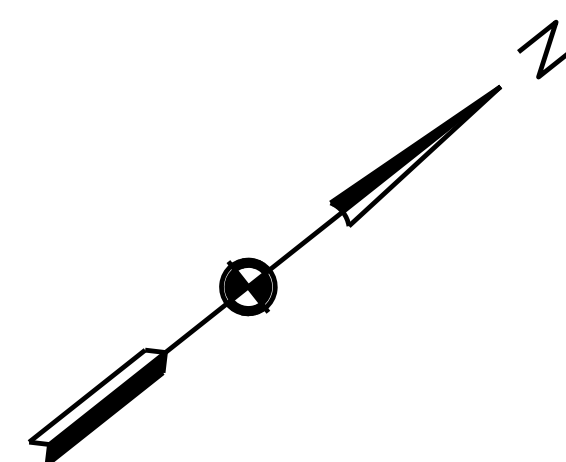
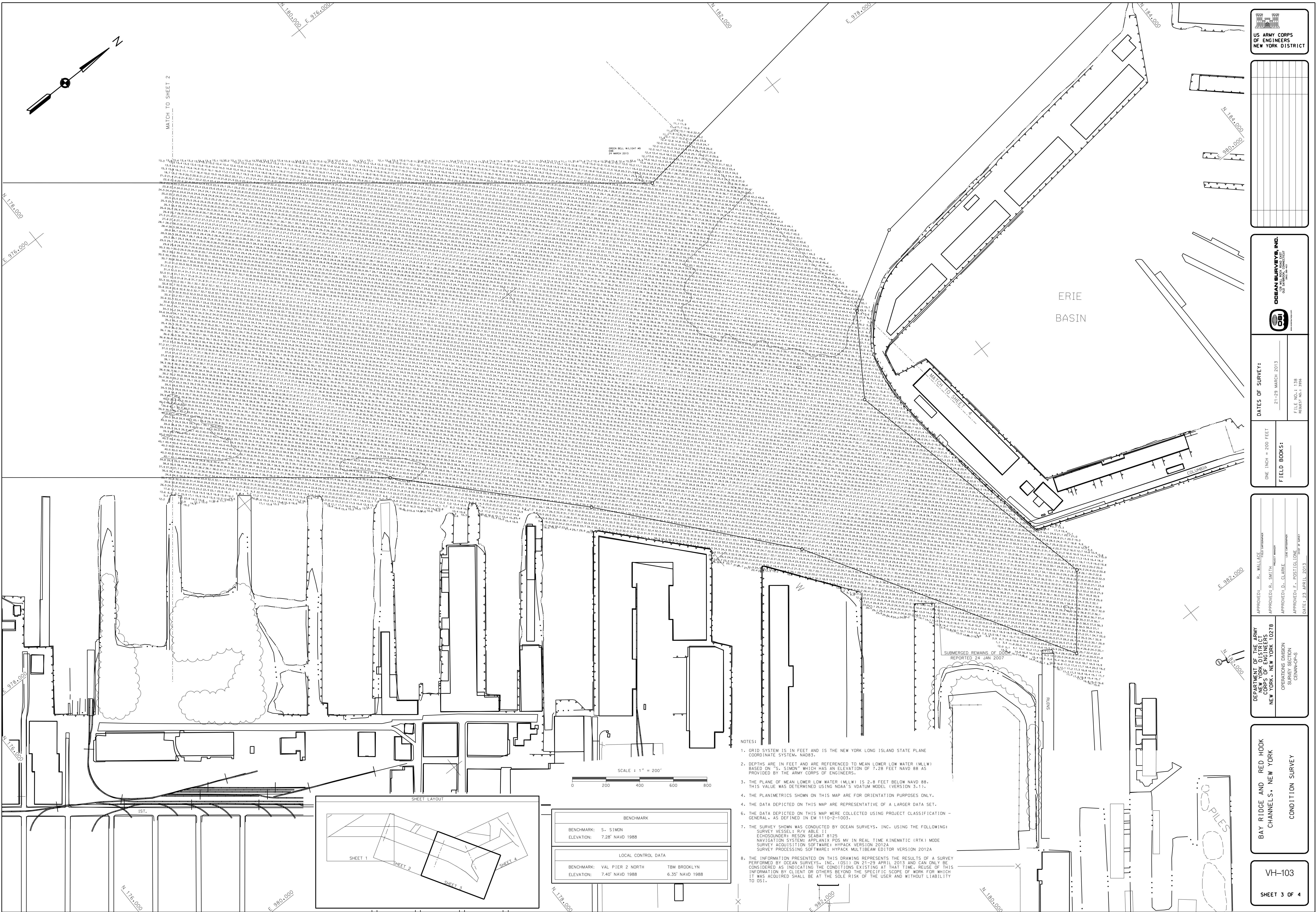
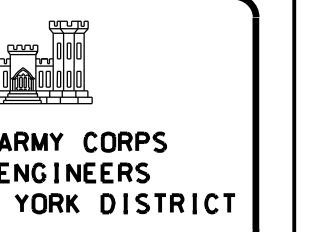
BENCHMARK	
BENCHMARK: 5. SIMON	ELEVATION: 7.28' NAVD 1988
LOCAL CONTROL DATA	
BENCHMARK: VAL PIER 2 NORTH	TBM BROOKLYN
ELEVATION: 7.40' NAVD 1988	6.35' NAVD 1988

- NOTES:
- GRID SYSTEM IS IN FEET AND IS THE NEW YORK LONG ISLAND STATE PLANE COORDINATE SYSTEM, NAD83.
 - DEPTHS ARE IN FEET AND ARE REFERENCED TO MEAN LOWER LOW WATER (MLLW) BASED ON S. SIMON WHICH HAS AN ELEVATION OF 7.28 FEET NAVD 88 AS PROVIDED BY THE ARMY CORPS OF ENGINEERS.
 - THE PLANE OF MEAN LOWER LOW WATER (MLLW) IS 2.8 FEET BELOW NAVD 88. THIS VALUE WAS DETERMINED USING NOAA'S DATUM MODEL (VERSION 3.1.1).
 - THE PLANIMETRICS SHOWN ON THIS MAP ARE FOR ORIENTATION PURPOSES ONLY.
 - THE DATA DEPICTED ON THIS MAP ARE REPRESENTATIVE OF A LARGER DATA SET.
 - THE DATA DEPICTED ON THIS MAP WERE COLLECTED USING PROJECT CLASSIFICATION - GENERAL, AS DEFINED IN EM 1110-2-1003.
 - THE SURVEY SHOWN WAS CONDUCTED BY OCEAN SURVEYS, INC. USING THE FOLLOWING: SURVEY VESSEL: R/V ABLE II; CHRONOMETER: 125; NAVIGATION SYSTEM: APPLANT POS MV IN REAL TIME KINEMATIC (RTK) MODE; SURVEY ACQUISITION SOFTWARE: HYPACK WENJUN 2012A; SURVEY PROCESSOR SOFTWARE: HYPACK SURFACEDRIVER VERSION 2012A.
 - THE INFORMATION PRESENTED ON THIS DRAWING REPRESENTS THE RESULTS OF A SURVEY PERFORMED BY OCEAN SURVEYS, INC. (OSI) ON 21-29 APRIL 2013 AND CAN ONLY BE USED FOR THE PURPOSES EXISTING AT THAT TIME. THE INFORMATION IS NOT TO BE USED FOR ANY OTHER PURPOSES WITHOUT THE SPECIFIC SCOPE OF WORK FOR WHICH IT WAS ACQUIRED SHALL BE AT THE SOLE RISK OF THE USER AND WITHOUT LIABILITY TO OSI.

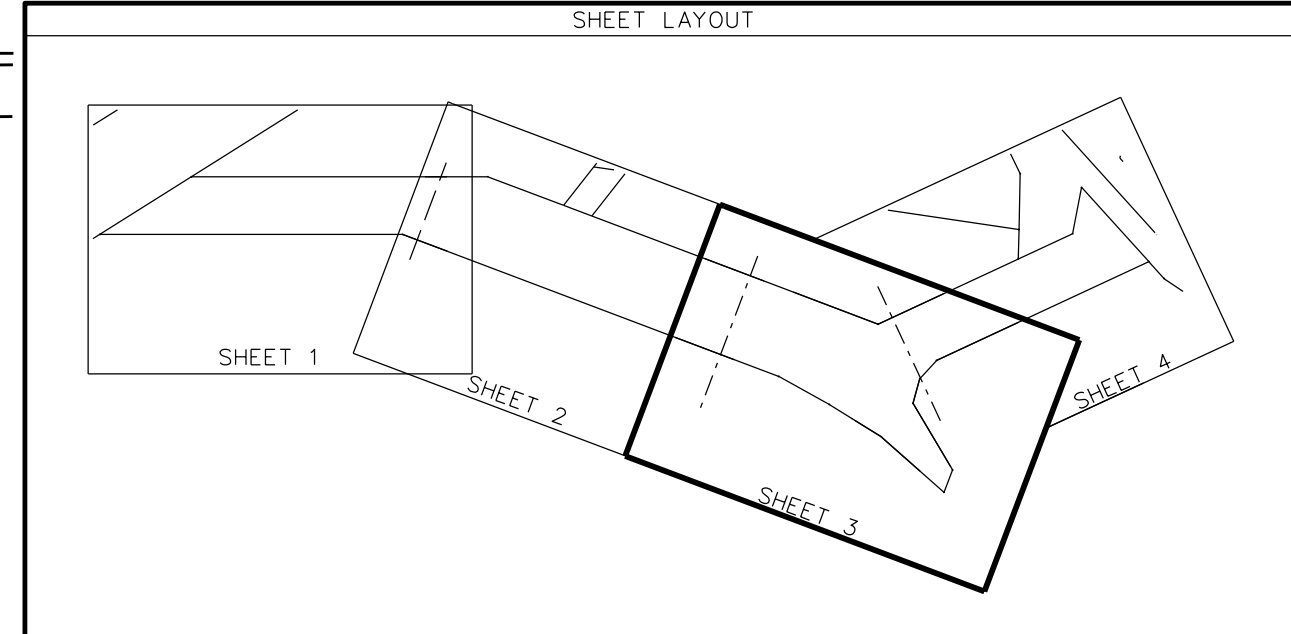
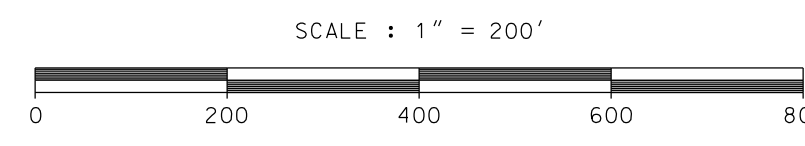
BAY RIDGE AND RED HOOK CHANNELS, NEW YORK

CONDITION SURVEY

VH-102
SHEET 2 OF 4



MATCH TO SHEET 2



BENCHMARK	
BENCHMARK:	S. SIMON
ELEVATION:	7.28' NAVD 1988
LOCAL CONTROL DATA	
BENCHMARK:	VAL PIER 2 NORTH
ELEVATION:	7.40' NAVD 1988
	TBM BROOKLYN
	6.35' NAVD 1988

- NOTES:
1. GRID SYSTEM IS IN FEET AND IS THE NEW YORK LONG ISLAND STATE PLANE COORDINATE SYSTEM. NAADS.
 2. DEPTHS ARE IN FEET AND IS REFERENCED TO MEAN LOWER LOW WATER (MLLW) BASED ON 'S. SIMON' WHICH HAS AN ELEVATION OF 7.28 FEET NAVD 88 AS PROVIDED BY THE ARMY CORPS OF ENGINEERS.
 3. THE PLANE OF MEAN LOWER LOW WATER (MLLW) IS 2.8 FEET BELOW NAVD 88. THIS VALUE WAS DETERMINED USING NOAA'S VDATUM MODEL (VERSION 3.1.1).
 4. THE PLANIMETRICS SHOWN ON THIS MAP ARE FOR ORIENTATION PURPOSES ONLY.
 5. THE DATA DEPICTED ON THIS MAP ARE REPRESENTATIVE OF A LARGER DATA SET.
 6. THE DATA DEPICTED ON THIS MAP WERE COLLECTED USING PROJECT CLASSIFICATION - GENERAL, AS DEFINED IN EM 1110-2-1003.
 7. THE SURVEY SHOWN WAS CONDUCTED BY OCEAN SURVEYS, INC. USING THE FOLLOWING:
 - SURVEY VESSEL: R/V ABLE 1
 - ECHOSOUNDER: RESON SEABAT 8125
 - NAVIGATION SYSTEM: APPLICABLE
 - RTK MODE: REAL TIME KINEMATIC (RTK) MODE
 - SURVEY ACQUISITION SOFTWARE: HYPACK VERSION 2012A
 - SURVEY PROCESSING SOFTWARE: HYPACK MULTIBEAM EDITOR VERSION 2012A
 8. THE INFORMATION PRESENTED ON THIS DRAWING REPRESENTS THE RESULTS OF A SURVEY PERFORMED BY OCEAN SURVEYS, INC. ON 2/29/2013. THIS SURVEY IS NOT TO BE CONSIDERED AS INDICATING THE CONDITIONS EXISTING AT THAT TIME. REUSE OF THIS INFORMATION BY CLIENT OR OTHERS BEYOND THE SPECIFIC SCOPE OF WORK FOR WHICH IT WAS ACQUIRED SHALL BE AT THE RISK OF THE USER AND WITHOUT LIABILITY TO OSI.

US ARMY CORPS OF ENGINEERS
NEW YORK DISTRICT

OCEAN SURVEYS, INC.
OCEAN SURVEYING & POSITIONING

DATE: 23 APRIL 2013

OPERATIONS DIVISION
SURVEYING SECTION
NEW YORK DISTRICT

APPROVED: B. WALLACE
APPROVED: B. SMITH
APPROVED: J. CLARKE
APPROVED: F. PASITOLONE

DATE: 23 APRIL 2013

FIELD BOOKS:

ONE INCH = 200 FEET

DATES OF SURVEY:
21-29 MARCH 2013

FILE NO.: 138
REQUEST NO.: 1396

DEPARTMENT OF THE ARMY
CORPS OF ENGINEERS
NEW YORK DISTRICT

OPERATIONS DIVISION
SURVEYING SECTION
NEW YORK DISTRICT

APPROVED: B. WALLACE
APPROVED: B. SMITH
APPROVED: J. CLARKE
APPROVED: F. PASITOLONE

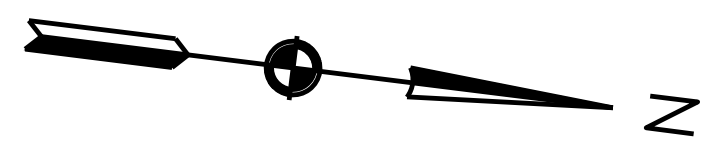
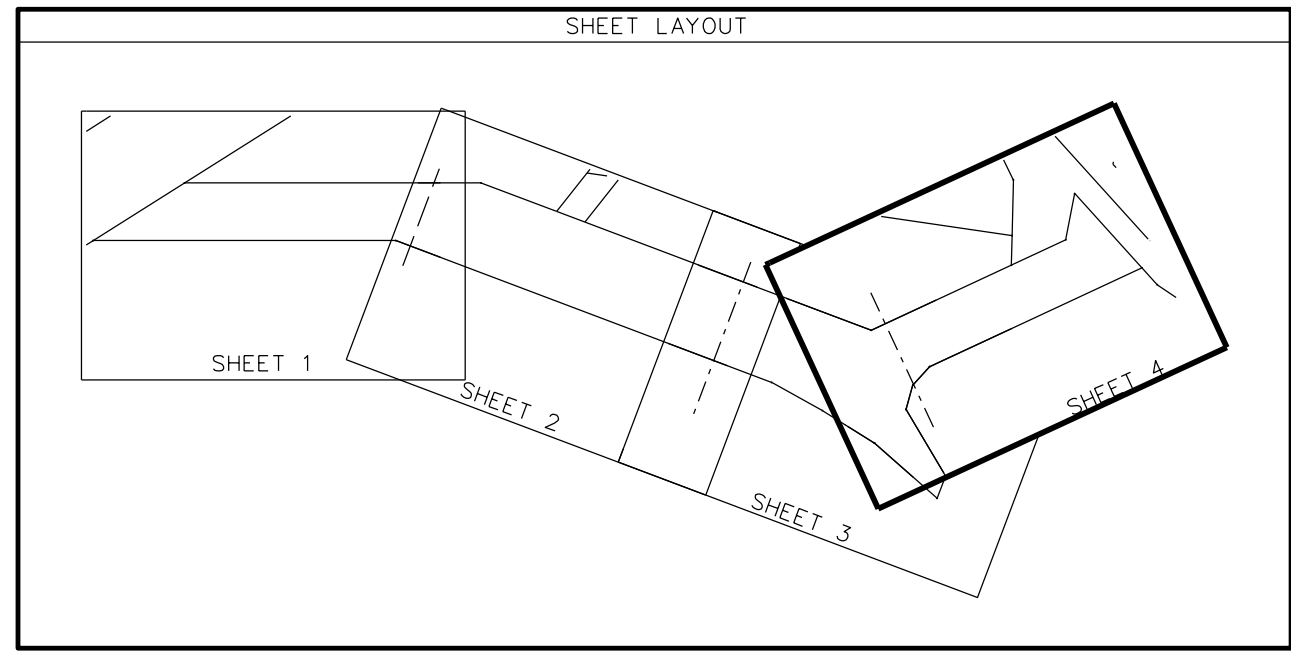
DATE: 23 APRIL 2013

BAY RIDGE AND RED HOOK CHANNELS, NEW YORK

CONDITION SURVEY

VH-103

SHEET 3 OF 4



E 978.000

N 182.000

N 184.000

N 186.000

BUTTERMILK CHANNEL

GREEN BELL W/LIGHT #11
SLACK
28 MARCH 2013

MATCH TO SHEET 3.

E 976.000

E 978.000

N 186.000

E 980.000

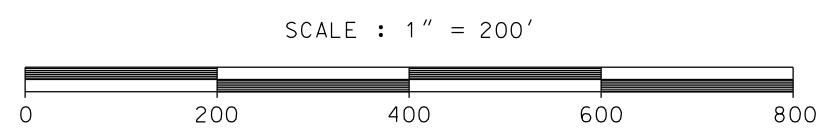
N 182.000

N 184.000

N 186.000

E 980.000

SUMMERGED REMAINS OF DOCK
REPORTED 24 JAN 2007

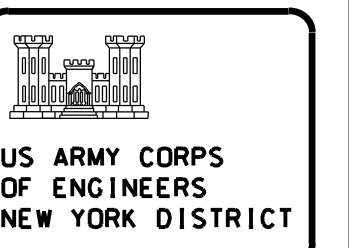


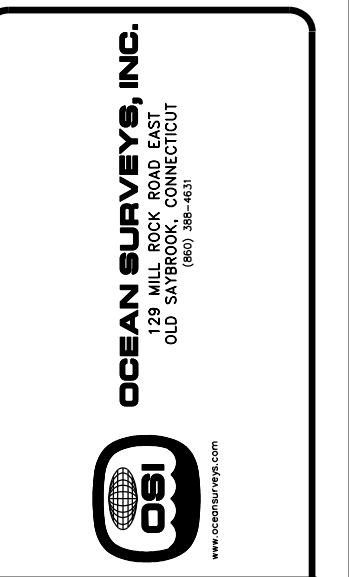
BENCHMARK	
BENCHMARK:	S. SIMON
ELEVATION:	7.28' NAVD 88

LOCAL CONTROL DATA	
BENCHMARK:	VAL PIER 2 NORTH TBM BROOKLYN
ELEVATION:	7.40' NAVD 1988 6.35' NAVD 1988

NOTES:

- GRID SYSTEM IS IN FEET AND IS THE NEW YORK LONG ISLAND STATE PLANE COORDINATE SYSTEM, NAD83.
- DEPTHS ARE IN FEET AND ARE REFERENCED TO MEAN LOWER LOW WATER (MLLW) BASED ON "S. SIMON" WHICH HAS AN ELEVATION OF 7.28 FEET NAVD 88 AS PROVIDED BY THE ARMY CORPS OF ENGINEERS.
- THE PLANE OF MEAN LOWER LOW WATER (MLLW) IS 2.8 FEET BELOW NAVD 88; THIS VALUE WAS DETERMINED USING NOAA'S DATUM MODEL (VERSION 3.1.1).
- THE PLANIMETRICS SHOWN ON THIS MAP ARE FOR ORIENTATION PURPOSES ONLY.
- THE DATA DEPICTED ON THIS MAP ARE REPRESENTATIVE OF A LARGER DATA SET.
- THE DATA DEPICTED ON THIS MAP WERE COLLECTED USING PROJECT CLASSIFICATION - GENERAL, AS DEFINED IN EM 1110-2-1003.
- THE SURVEY SHOWN WAS CONDUCTED BY OCEAN SURVEYS, INC. USING THE FOLLOWING:
SURVEY VESSEL: R/V ABLE 11
ECHOSOUNDERS: RESON SEABAT 8125
NAVIGATION SYSTEM: APPLANIX POS MV IN REAL TIME KINEMATIC (RTK) MODE
SURVEY ACQUISITION SOFTWARE: HYPACK VERSION 2012A
SURVEY PROCESSING SOFTWARE: HYPACK MULTIBEAM EDITOR VERSION 2012A
- THE INFORMATION PRESENTED ON THIS DRAWING REPRESENTS THE RESULTS OF A SURVEY PERFORMED BY OCEAN SURVEYS, INC. (OSI) ON 21-29 APRIL 2013 AND CAN ONLY BE CONSIDERED AS INDICATING THE CONDITIONS EXISTING AT THAT TIME. REUSE OF THIS INFORMATION BY CLIENT OR OTHERS BEYOND THE SPECIFIC SCOPE OF WORK FOR WHICH IT WAS ACQUIRED SHALL BE AT THE SOLE RISK OF THE USER AND WITHOUT LIABILITY TO OSI.





DATE OF SURVEY:
21-29 MARCH 2013

FILE NO.: 138
REQUEST NO.: 1396

ONE INCH = 200 FEET

FIELD BOOKS:

APPROVED: [Signature] B. WALLACE
APPROVED: [Signature] R. SMITH
APPROVED: [Signature] D. CLARKE
APPROVED: [Signature] E. POSTELLO
DATE: 23 APRIL 2013

DEPARTMENT OF THE ARMY
CORPS OF ENGINEERS
NEW YORK, NEW YORK 10278

OPERATIONS DIVISION
SOUTHERN NA
CERANAC-D3

BAY RIDGE AND RED HOOK CHANNELS, NEW YORK

CONDITION SURVEY

VH-104

SHEET 4 OF 4