

US ARMY CORPS OF ENGINEERS NEW YORK DISTRICT
FILE NO. 1: 50 PROJECT NO.: 6688/N1/23

DATE OF SURVEY: 25.5, 26.12, 17 APRIL 2018	SCALE: ONE INCH = 50 FEET
FIELD BOOKS: 1035	FILE NO.: 50 PROJECT NO.: 6688/N1/23

APPROVED: J. BERDODT CORPS OF ENGINEERS	APPROVED: D. CLARKE CORPS OF ENGINEERS
APPROVED: M. EDGIE CORPS OF ENGINEERS	APPROVED: J. WRAZ CORPS OF ENGINEERS

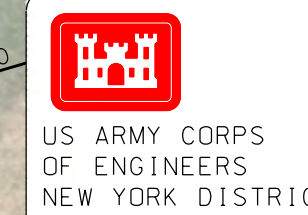
OPERATIONS DIVISION NEW YORK, NEW YORK 10278
OPERATIONS DIVISION NEW YORK, NEW YORK 10278

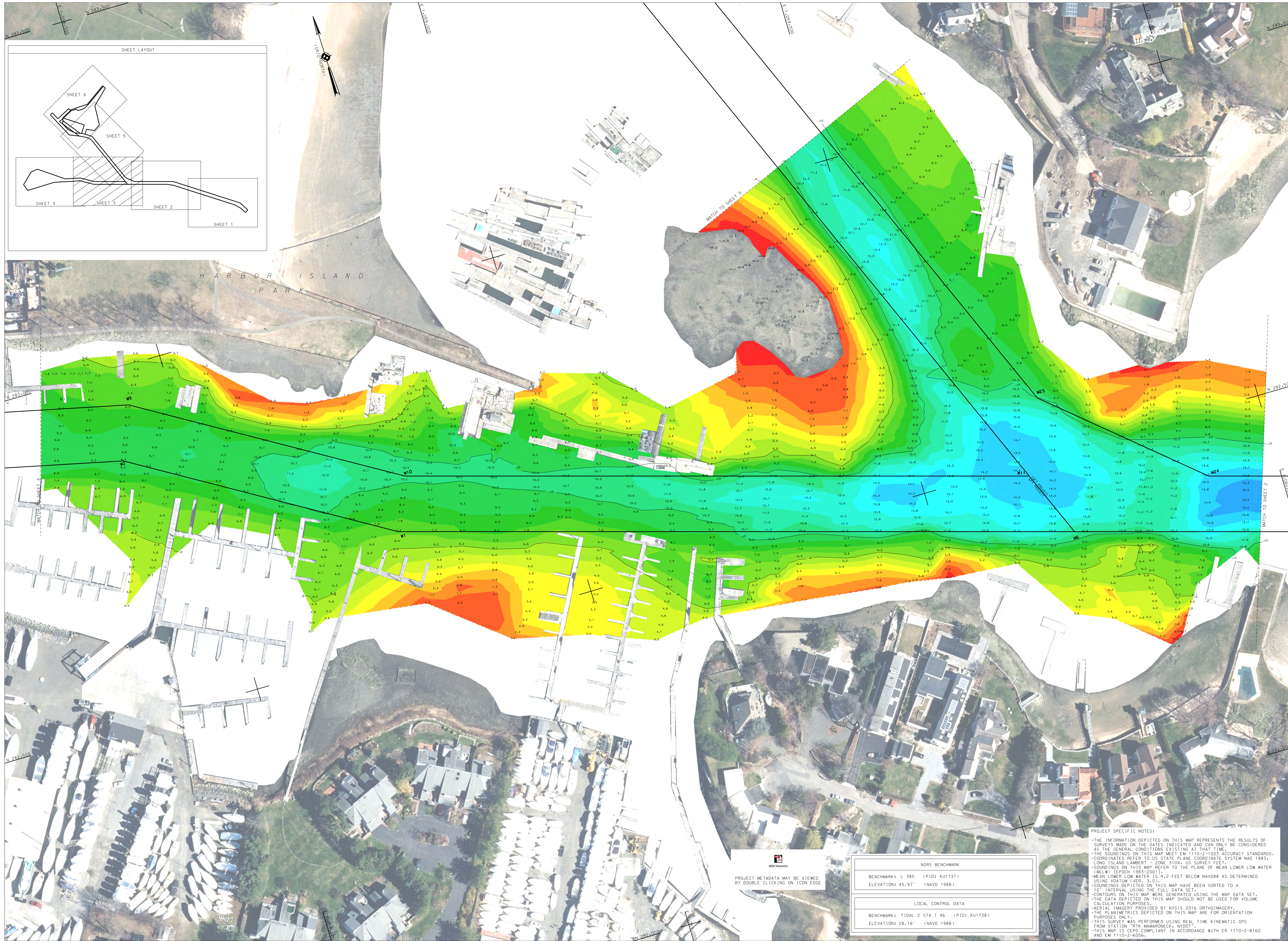
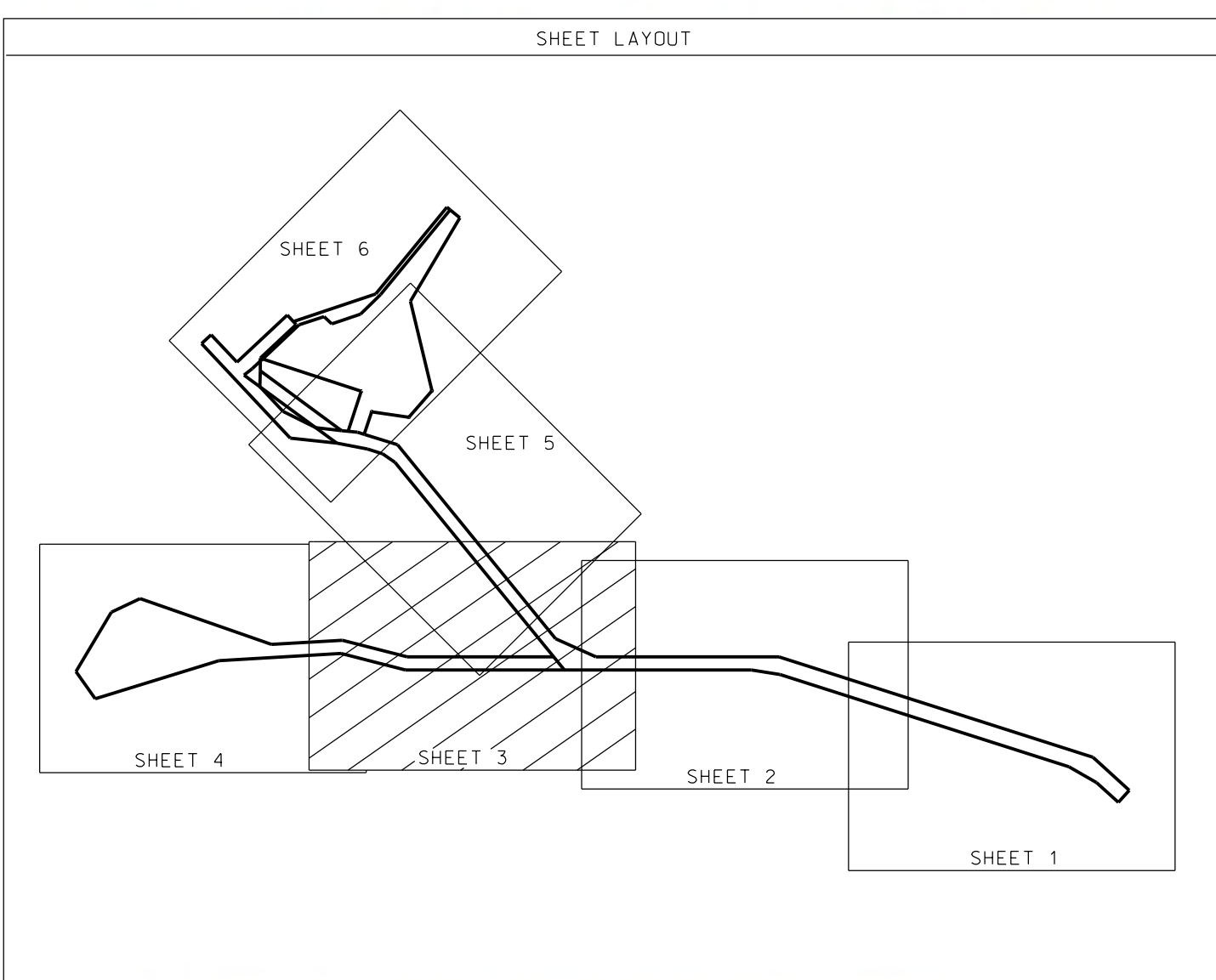
MAMARONECK HARBOR - NEW YORK CONDITION SURVEY
--

NSRS BENCHMARK BENCHMARK: L 385 (PID: KU1737) ELEVATION: 45.97' (NAVD 1988)
LOCAL CONTROL DATA BENCHMARK: TIDAL 2 STA 1 46 (PID: KU1738) ELEVATION: 28.16' (NAVD 1988)

PROJECT METADATA MAY BE VIEWED
BY DOUBLE CLICKING ON ICON EDGE

PROJECT SPECIFIC NOTES:
- THE INFORMATION DEPICTED ON THIS MAP REPRESENTS THE RESULTS OF SURVEYS MADE ON THE DATES INDICATED AND CAN ONLY BE CONSIDERED AS THE GENERAL CONDITIONS EXISTING AT THAT TIME.
- THE SOUNDINGS ON THIS MAP MEET EM 1110-2-1003 ACCURACY STANDARDS.
- COORDINATES REFER TO US STATE PLANE COORDINATE SYSTEM NAD 1983 - LONG ISLAND LAMBERT - ZONE 3104, US SURVEY FEET.
- SOUNDINGS ON THIS MAP REFER TO THE PLANE OF MEAN LOWER LOW WATER (MLLW) (EPIC 1983-2001).
- MEAN LOWER LOW WATER IS 4.2 FEET BELOW NAVD88 AS DETERMINED USING VDATM 1/VER: 3.01.
- SOUNDINGS DEPICTED ON THIS MAP HAVE BEEN SORTED TO A 10' INTERVAL USING THE FBIL DATA SET.
- CONTOURS ON THIS MAP WERE GENERATED USING THE MAP DATA SET. THE DATA DEPICTED ON THIS MAP SHOULD NOT BE USED FOR VOLUME CALCULATION PURPOSES.
- AERIAL IMAGERY PROVIDED BY NYGIS 2016 ORTHOIMAGERY.
- THE PLANIMETRICS DEPICTED ON THIS MAP ARE FOR ORIENTATION PURPOSES ONLY.
- THIS SURVEY WAS PERFORMED USING REAL TIME KINEMATIC GPS FROM STATION "RTK_MAMARONECK_NYDDT".
- THIS MAP IS CEPD COMPLIANT IN ACCORDANCE WITH ER 1110-2-8160 AND EM 1110-2-6056.





DATES OF SURVEY:
 3.5.25.16.17.17 APRIL 2018

SCALE:
 ONE INCH = 50 FEET

FIELD BOOKS:
 1035

DEPARTMENT OF THE ARMY
 CORPS OF ENGINEERS
 NEW YORK DISTRICT

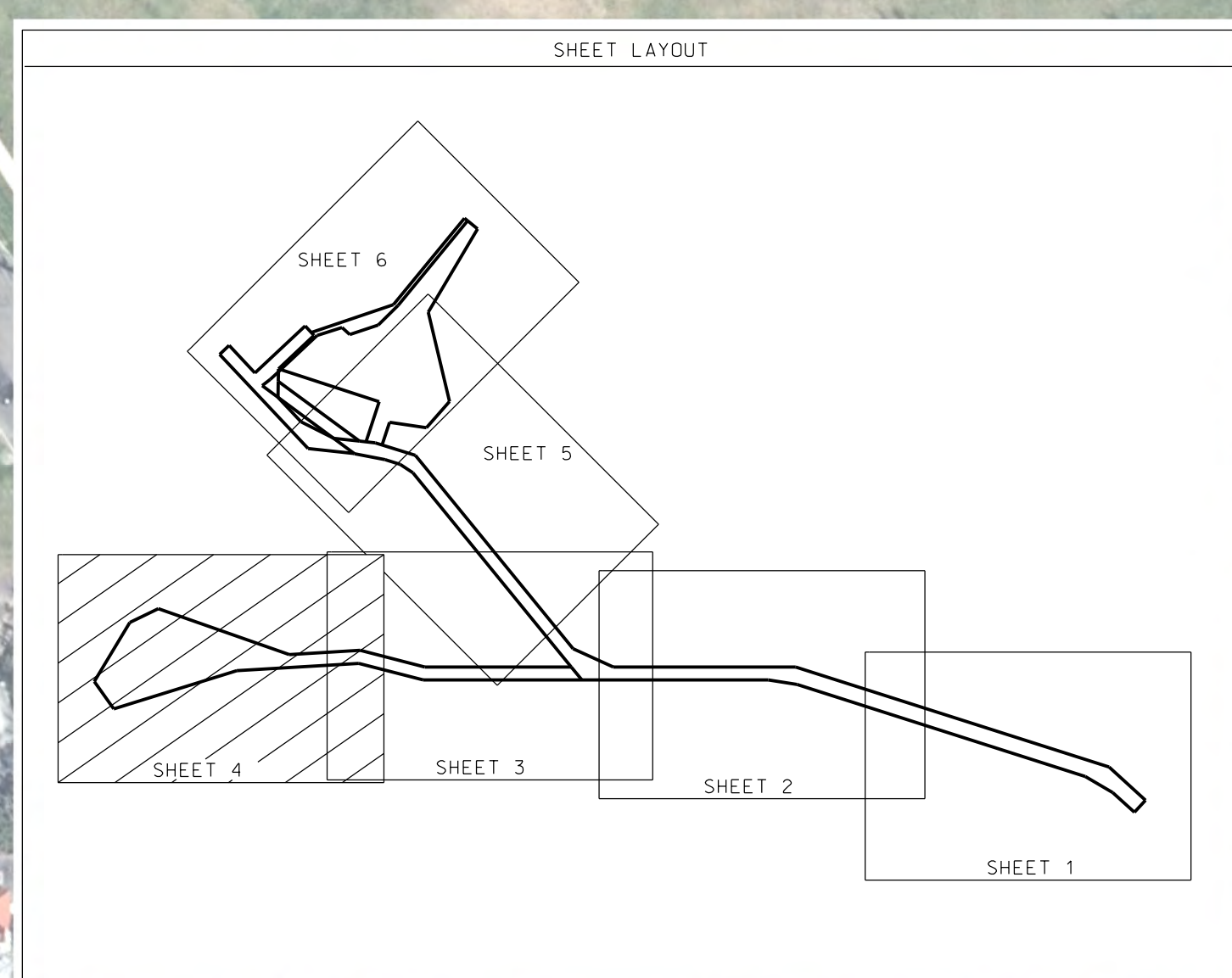
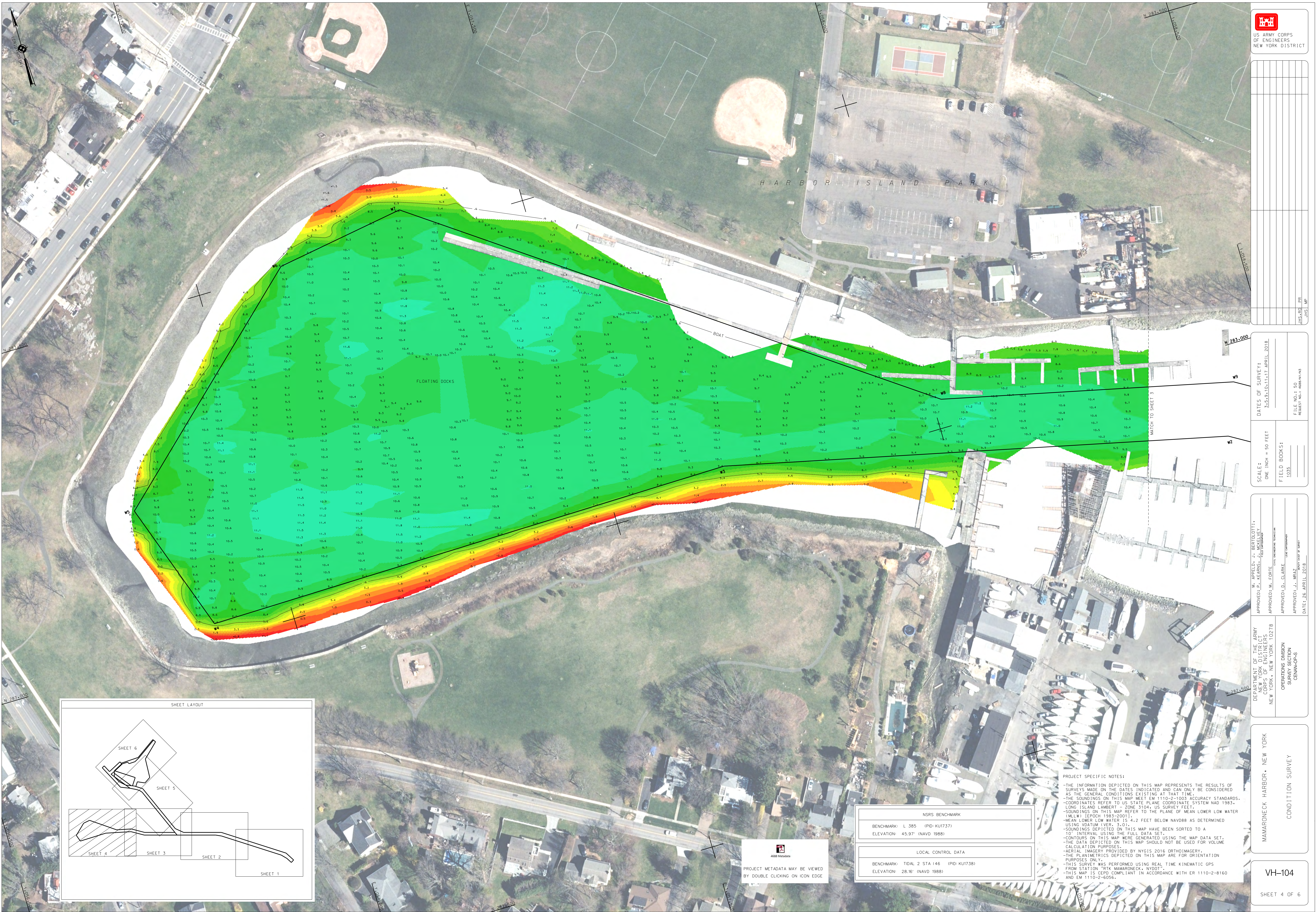
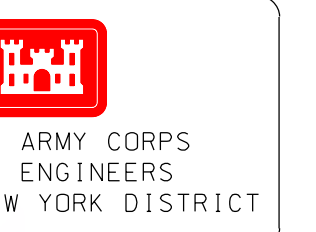
OPERATIONS DIVISION
 SHORES ACRES

MAMARONECK HARBOR - NEW YORK
 CONDITION SURVEY

PROJECT METADATA MAY BE VIEWED
 BY DOUBLE CLICKING ON ICON EDGE

NSRS BENCHMARK	
BENCHMARK:	L 385 (PID: KU1737)
ELEVATION:	45.91' (NAVD 1988)
LOCAL CONTROL DATA	
BENCHMARK:	TIDAL 2 STA 1 46 (PID: KU1738)
ELEVATION:	28.16' (NAVD 1988)

PROJECT SPECIFIC NOTES:
 -THE INFORMATION DEPICTED ON THIS MAP REPRESENTS THE RESULTS OF SURVEYS MADE ON THE DATES INDICATED AND CAN ONLY BE CONSIDERED AS THE GENERAL CONDITIONS EXISTING AT THAT TIME.
 -THE SOUNDINGS ON THIS MAP MEET EM 1110-2-1003 ACCURACY STANDARDS.
 -COORDINATES REFER TO US STATE PLANE COORDINATE SYSTEM NAD 1983 LONG ISLAND LAMBERT - ZONE 3104, US SURVEY FEET.
 -SOUNDINGS ON THIS MAP REFER TO THE PLANE OF MEAN LOWER LOW WATER (MLLW) (EPOCH 1983-2001).
 -MEAN LOWER LOW WATER IS 4.2 FEET BELOW NAVD88 AS DETERMINED USING NYATM (VER. 3-0).
 -SOUNDINGS DEPICTED ON THIS MAP HAVE BEEN SORTED TO A 10' INTERVAL USING THE FULL DATA SET.
 -CONTOURS ON THIS MAP WERE GENERATED USING THE MAP DATA SET.
 -THE DATA DEPICTED ON THIS MAP SHOULD NOT BE USED FOR VOLUME CALCULATION PURPOSES.
 -AERIAL IMAGERY PROVIDED BY NYCIS 2016 ORTHOIMAGERY.
 -THIS SURVEY WAS PERFORMED USING REAL TIME KINEMATIC GPS FROM STATION "RTK MAMARONECK, NYDOT".
 -THIS MAP IS CEPP COMPLIANT IN ACCORDANCE WITH ER 1110-2-8160 AND EM 1110-2-6056.



NSRS BENCHMARK	
BENCHMARK:	L 385 (PID: KUI737)
ELEVATION:	45.97' (NAVD 1988)
LOCAL CONTROL DATA	
BENCHMARK:	TOTAL 2 STA 148 (PID: KUI738)
ELEVATION:	28.16' (NAVD 1988)

PROJECT SPECIFIC NOTES:

- THE INFORMATION DEPICTED ON THIS MAP REPRESENTS THE RESULTS OF SURVEYS MADE ON THE DATES INDICATED AND CAN ONLY BE CONSIDERED AS THE GENERAL CONDITIONS EXISTING AT THAT TIME.
- THE SOUNDINGS ON THIS MAP MEET EM 1110-2-1003 ACCURACY STANDARDS.
- COORDINATES REFER TO US STATE PLANE COORDINATE SYSTEM NAD 1983, LONG ISLAND LAMBERT - ZONE 3104, US SURVEY FEET.
- SOUNDINGS ON THIS MAP REFER TO THE PLANE OF MEAN LOWER LOW WATER (MLLW) TIDE (PERIOD 1983-2001).
- MEAN LOWER LOW WATER IS 4.2 FEET BELOW NAVD88 AS DETERMINED USING DATUM 1983, 3.01'.
- SOUNDINGS DEPICTED ON THIS MAP HAVE BEEN SORTED TO A 10' INTERVAL USING THE FULL DATA SET.
- CONTOURS ON THIS MAP WERE GENERATED USING THE MAP DATA SET.
- THE DATA DEPICTED ON THIS MAP SHOULD NOT BE USED FOR VOLUME CALCULATION PURPOSES.
- AERIAL IMAGERY PROVIDED BY NYGIS 2016 ORTHOIMAGERY.
- THIS SURVEY WAS PERFORMED USING REAL TIME KINEMATIC GPS FROM STATION 'RTK MAMARONECK', NYDOT.
- THIS MAP IS CEPP COMPLIANT IN ACCORDANCE WITH ER 1110-2-8160 AND EM 1110-2-6056.

FILE NO: 50	REVISION NO: 4888/P/3
JMS:EPS	MP
JMS	MP

DATE OF SURVEY:	3.5.2016, 10.11.17, APRIL 2018
SCALE:	ONE INCH = 50 FEET
FIELD BOOKS:	1035
FILE NO: 50	REVISION NO: 4888/P/3

DEPARTMENT OF THE ARMY	M. APPEL, J. BERGOTTI,
CORPS OF ENGINEERS	APPROVED: E. CERRITO, J. HARRINGTON
NEW YORK, NEW YORK 10278	APPROVED: M. EDGIE, J. HARRINGTON
OPERATIONS DIVISION	APPROVED: D. CLARKE, J. HARRINGTON
SECTION 3000	APPROVED: J. WRAZ, J. HARRINGTON
CENAN-OPS	DATE: 26 APRIL 2018

MAMARONECK HARBOR, NEW YORK
CONDITION SURVEY

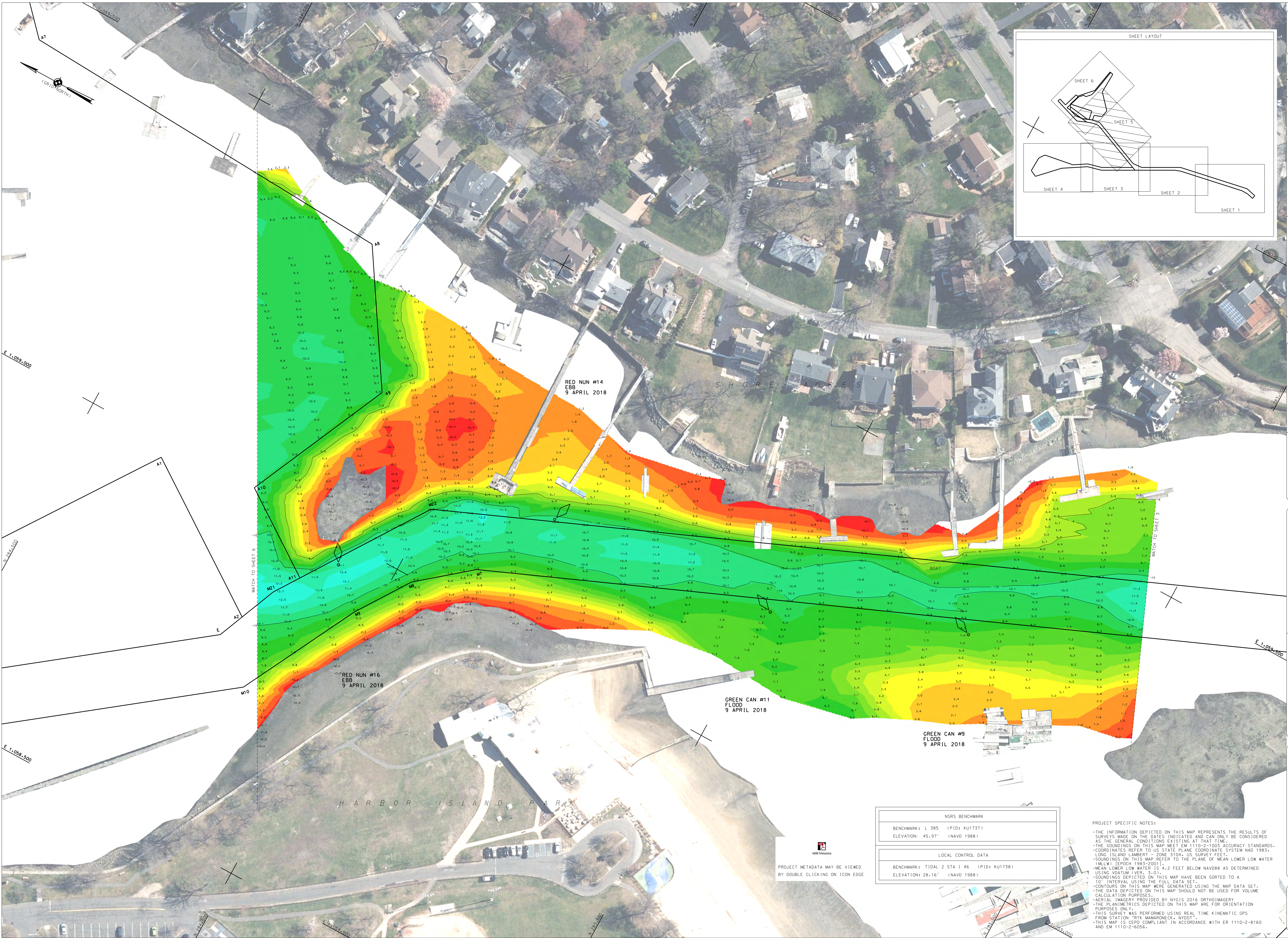
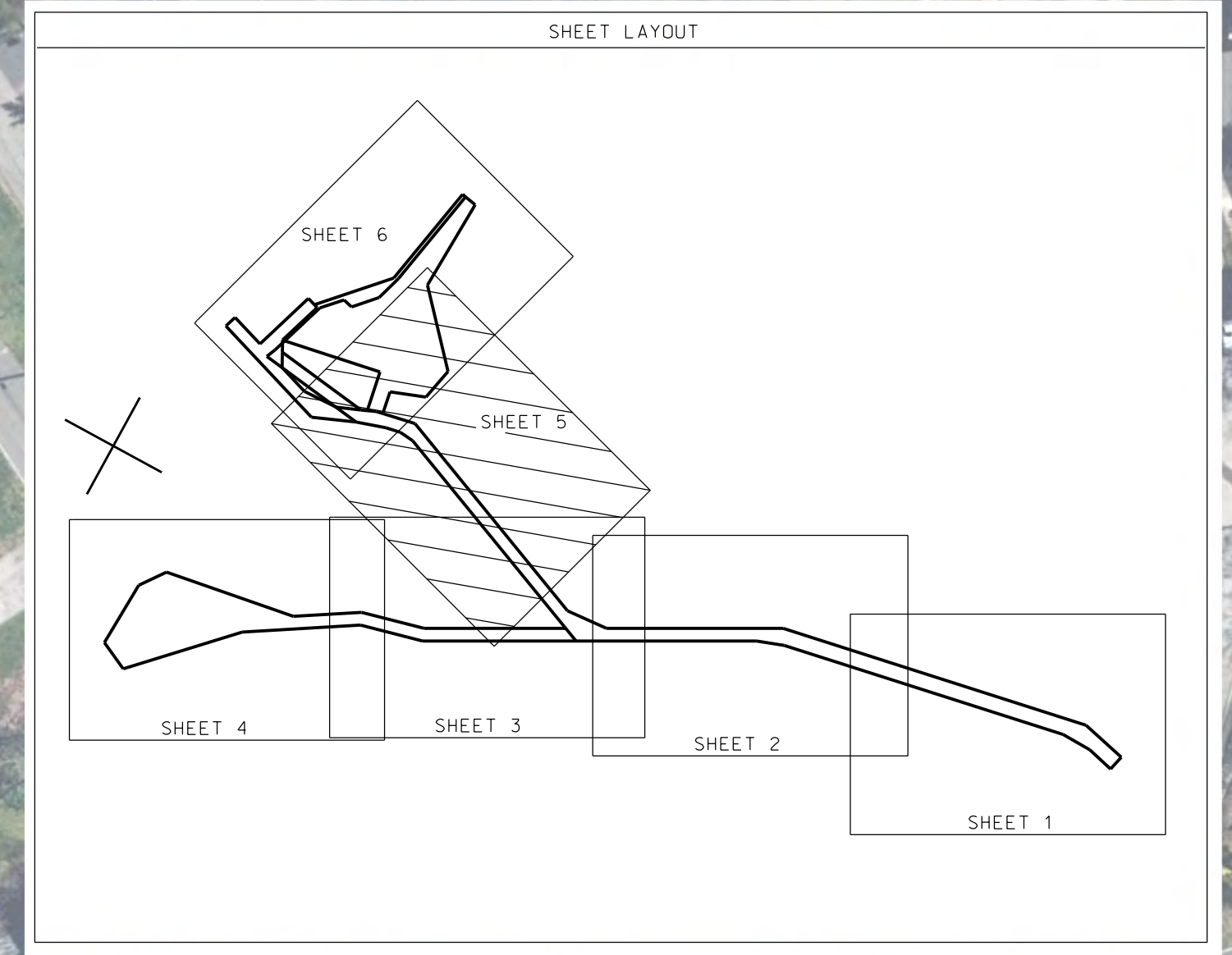
VH-104
SHEET 4 OF 6



PROJECT METADATA MAY BE VIEWED BY DOUBLE CLICKING ON ICON EDGE



FILE NO: 50
REG: 601
DATE: 26 APRIL 2018
PROJECT: 601
SCALE: 1" = 50 FEET
FIELD BOOKS: 1035
DATE OF SURVEY: 25, 26, 27, 28 APRIL 2018
FILE NO: 1 50
REG: 601
DATE: 26 APRIL 2018
PROJECT: 601



NSRS BENCHMARK	
BENCHMARK: L 385 (PID: KUI737)	
ELEVATION: 45.97' (NAVD 1988)	

LOCAL CONTROL DATA	
BENCHMARK: TIDAL 2 STA 1 46 (PID: KUI738)	
ELEVATION: 28.16' (NAVD 1988)	

PROJECT METADATA MAY BE VIEWED BY DOUBLE CLICKING ON ICON EDGE

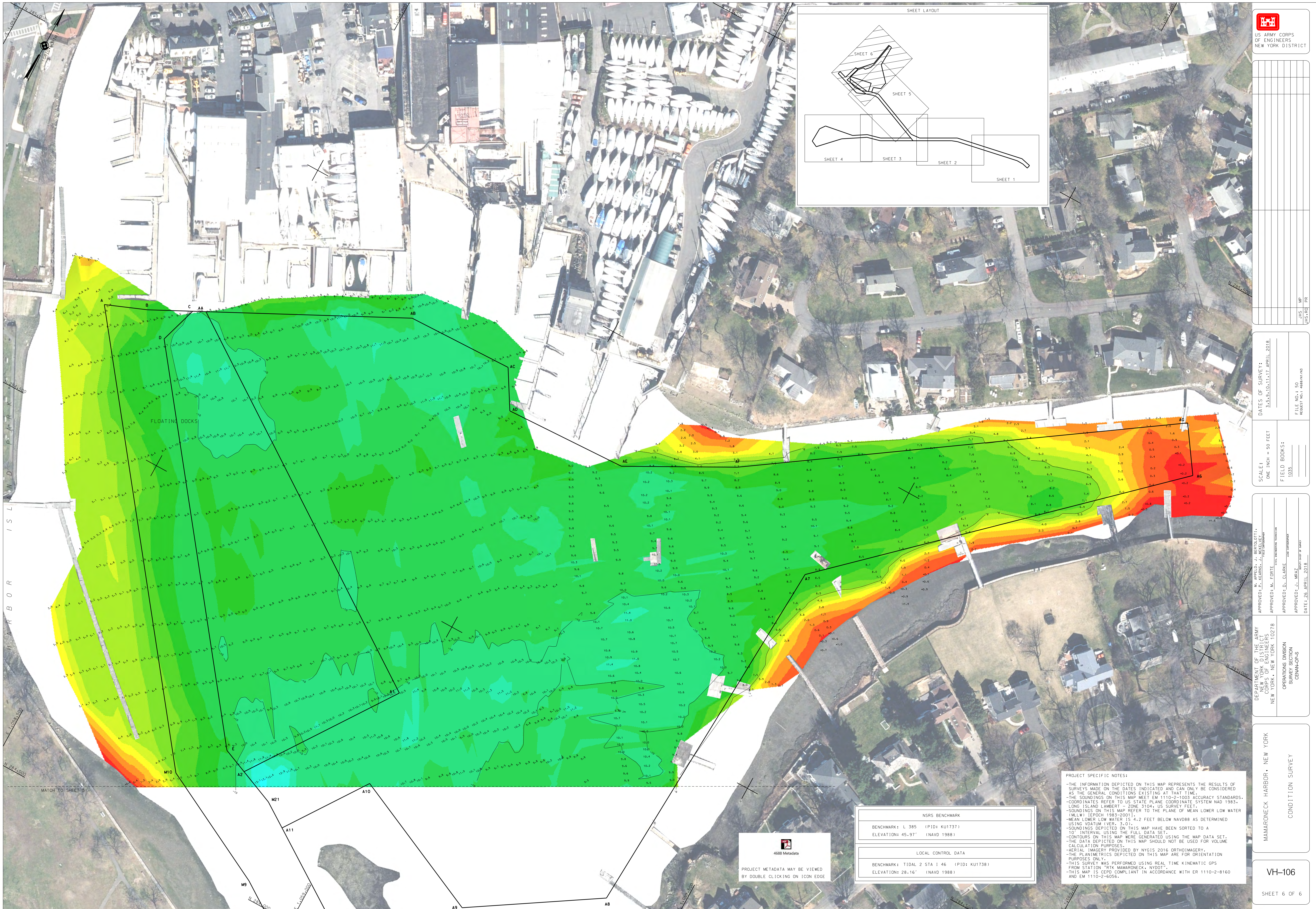
PROJECT SPECIFIC NOTES:
 -THE INFORMATION DEPICTED ON THIS MAP REPRESENTS THE RESULTS OF SURVEYS MADE ON THE DATES INDICATED AND CAN ONLY BE CONSIDERED AS THE GENERAL CONDITIONS EXISTING AT THAT TIME.
 -THE SOUNDINGS ON THIS MAP MEET EM 1110-2-1003 ACCURACY STANDARDS.
 -COORDINATES REFER TO US STATE PLANE COORDINATE SYSTEM NAD 1983, LONG ISLAND LAMBERT - ZONE 3104- US SURVEY FEET.
 -SOUNDINGS ON THIS MAP REFER TO THE PLANE OF MEAN LOWER LOW WATER (MLLW) [EPHOC 1985-2001].
 -MEAN LOWER LOW WATER IS 4.2 FEET BELOW NAVD88 AS DETERMINED USING VDATUM VER. 3.01.
 -SOUNDINGS DEPICTED ON THIS MAP HAVE BEEN SORTED TO A 10' INTERVAL USING THE FULL DATA SET.
 -CONTOURS ON THIS MAP WERE GENERATED USING THE MAP DATA SET.
 -THE DATA DEPICTED ON THIS MAP SHOULD NOT BE USED FOR VOLUME CALCULATION PURPOSES.
 -AERIAL IMAGERY PROVIDED BY NYCIS 2016 ORTHOIMAGERY.
 -THE PLANIMETRICS DEPICTED ON THIS MAP ARE FOR ORIENTATION PURPOSES ONLY.
 -THIS SURVEY WAS PERFORMED USING REAL TIME KINEMATIC GPS FROM STATION "RTK MAMARONECK" NYDOT.
 -THIS MAP IS CEPD COMPLIANT IN ACCORDANCE WITH ER 1110-2-8160 AND EM 1110-2-6056.

APPROVED: J. BERIDOTTI
 M. APPELDO
 APPROVED: M. EDGIE
 APPROVED: D. CLARKE
 APPROVED: J. WRAZ
 DATE: 26 APRIL 2018

DEPARTMENT OF THE ARMY
 CORPS OF ENGINEERS
 NEW YORK, NEW YORK 10278
 OPERATIONS DIVISION
 SURVEYING
 CENAN-COPS

MAMARONECK HARBOR - NEW YORK
 CONDITION SURVEY

VH-105
 SHEET 5 OF 6



<p>U.S. ARMY CORPS OF ENGINEERS NEW YORK DISTRICT</p>	
<p>DATE OF SURVEY: 3.5.2016-13.17 APRIL 2018</p>	<p>FILE NO.: 50 PROJECT NO.: 6888/P1/3</p>
<p>SCALE: ONE INCH = 50 FEET</p>	<p>FIELD BOOKS: 1035</p>
<p>APPROVED BY: M. APPEL, J. BERTELLOTTI, L. CLEGG, J. HARRIS</p>	<p>APPROVED BY: M. EDGIE, J. HARRIS</p>
<p>APPROVED BY: D. CLARKE</p>	<p>APPROVED BY: J. WRAZ</p>
<p>DATE: 26 APRIL 2018</p>	<p>DATE: 26 APRIL 2018</p>

<p>DEPARTMENT OF THE ARMY CORPS OF ENGINEERS NEW YORK, NEW YORK 10278</p>	<p>OPERATIONS DIVISION SOUNDINGS SECTION NEW YORK</p>
<p>MAMARONECK HARBOR - NEW YORK</p>	<p>CONDITION SURVEY</p>
<p>VH-106</p>	<p>SHEET 6 OF 6</p>

<p>NSRS BENCHMARK</p> <p>BENCHMARK: L 385 (PID: KU1737) ELEVATION: 45.97' (NAVD 1988)</p>	<p>LOCAL CONTROL DATA</p> <p>BENCHMARK: TIDAL 2 STA 1 46 (PID: KU1738) ELEVATION: 28.16' (NAVD 1988)</p>
---	--

PROJECT SPECIFIC NOTES:

- THE INFORMATION DEPICTED ON THIS MAP REPRESENTS THE RESULTS OF SURVEYS MADE ON THE DATES INDICATED AND CAN ONLY BE CONSIDERED AS THE GENERAL CONDITIONS EXISTING AT THAT TIME.
- THE SOUNDINGS ON THIS MAP MEET EM 1110-2-1003 ACCURACY STANDARDS.
- COORDINATES REFER TO US STATE PLANE COORDINATE SYSTEM NAD 1983, LONG ISLAND LAMBERT - ZONE 3104, US SURVEY FEET.
- SOUNDINGS ON THIS MAP REFER TO THE PLANE OF MEAN LOWER LOW WATER (MLLW) (EPOCH 1985-2001).
- MEAN LOWER LOW WATER IS 4.2 FEET BELOW NAVD88 AS DETERMINED USING WATUM (VER. 3.01).
- SOUNDINGS DEPICTED ON THIS MAP HAVE BEEN SORTED TO A 10' INTERVAL USING THE FULL DATA SET.
- CONTOURS ON THIS MAP WERE GENERATED USING THE MAP DATA SET.
- THE DATA DEPICTED ON THIS MAP SHOULD NOT BE USED FOR VOLUME CALCULATION PURPOSES.
- AERIAL IMAGERY PROVIDED BY NYGIS 2016 ORTHOIMAGERY.
- THE PLAINMETRICS DEPICTED ON THIS MAP ARE FOR ORIENTATION PURPOSES ONLY.
- THIS SURVEY WAS PERFORMED USING REAL TIME KINEMATIC GPS FROM STATION PTK MAMARONECK, NYDOT.
- THIS MAP IS CEPO COMPLIANT IN ACCORDANCE WITH ER 1110-2-8160 AND EM 1110-2-6056.

4688 Metadata
PROJECT METADATA MAY BE VIEWED BY DOUBLE CLICKING ON ICON EDGE