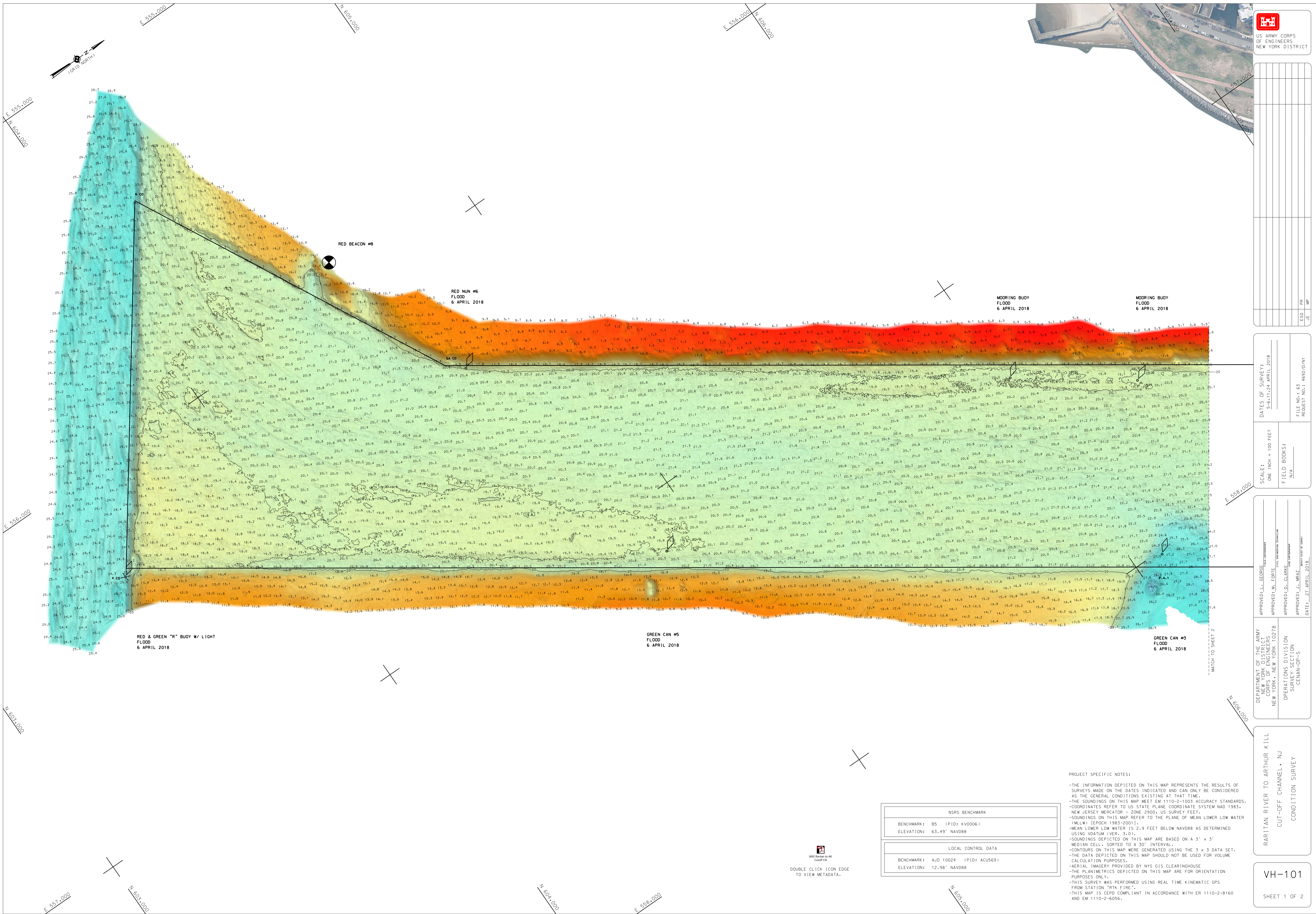




US ARMY CORPS
OF ENGINEERS
NEW YORK DISTRICT



DATE OF SURVEY:	5-6, 11-24 APRIL 2018
SCALE:	ONE INCH = 100 FEET
FIELD BOOKS:	N/A
FILE NO.:	63
REQUEST NO.:	4692/D/N1
ESD	PH
JE	NP

DATE OF SURVEY:	5-6, 11-24 APRIL 2018
SCALE:	ONE INCH = 100 FEET
FIELD BOOKS:	N/A
FILE NO.:	63
REQUEST NO.:	4692/D/N1

APPROVED: L. GEORGE	APPROVED: M. EORIE	APPROVED: D. CLARK	APPROVED: J. MRAZ
DATE: 27 APRIL 2018	DATE: 27 APRIL 2018	DATE: 27 APRIL 2018	DATE: 27 APRIL 2018

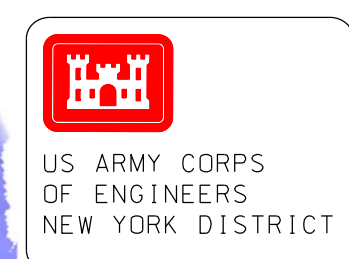
DEPARTMENT OF THE ARMY NEW YORK DISTRICT NEW YORK, NEW YORK 10278	OPERATIONS DIVISION SURVEILLANCE SECTION CENAN-OP-S	RARITAN RIVER TO ARTHUR KILL CUT-OFF CHANNEL - NJ CONDITION SURVEY	VH-101 SHEET 1 OF 2
---	---	--	------------------------

PROJECT SPECIFIC NOTES:

- THE INFORMATION DEPICTED ON THIS MAP REPRESENTS THE RESULTS OF SURVEYS MADE ON THE DATES INDICATED AND CAN ONLY BE CONSIDERED AS THE GENERAL CONDITIONS EXISTING AT THAT TIME.
- THE SOUNDINGS ON THIS MAP MEET EM 1110-2-1003 ACCURACY STANDARDS.
- COORDINATES REFER TO US STATE PLANE COORDINATE SYSTEM NAD 1983, NEW JERSEY MERCATOR - ZONE 2900, US SURVEY FEET.
- SOUNDINGS ON THIS MAP REFER TO THE PLANE OF MEAN LOWER LOW WATER (MLLW) [EPOCH 1983-2001].
- MEAN LOWER LOW WATER IS 2.9 FEET BELOW NAVD88 AS DETERMINED USING VDATUM RIVER, 3.001.
- SOUNDINGS DEPICTED ON THIS MAP ARE BASED ON A 3' x 3' MEDIAN CELL, SORTED TO A 30" INTERVAL.
- CONTOURS ON THIS MAP WERE GENERATED USING THE 3 x 3 DATA SET.
- THE DATA DEPICTED ON THIS MAP SHOULD NOT BE USED FOR VOLUME CALCULATION PURPOSES.
- AERIAL IMAGERY PROVIDED BY NYS GIS CLEARINGHOUSE.
- THE PLANIMETRICS DEPICTED ON THIS MAP ARE FOR ORIENTATION PURPOSES ONLY.
- THIS SURVEY WAS PERFORMED USING REAL TIME KINEMATIC GPS FROM STATION "RTK FIRE".
- THIS MAP IS CEPD COMPLIANT IN ACCORDANCE WITH ER 1110-2-8160 AND EM 1110-2-6056.

NSRS BENCHMARK
BENCHMARK: B5 (PID: KV0006)
ELEVATION: 63.49' NAVD88
LOCAL CONTROL DATA
BENCHMARK: AJD 10024 (PID: ACU569)
ELEVATION: 12.98' NAVD88

DOUBLE CLICK ICON EDGE
TO VIEW METADATA.

[illegible]

DATES OF SURVEY:
 5-6.11.24 APRIL 2018

FILE NO.: 63
 REQUEST NO.: 4692/D/N1

SCALE:
ONE INCH = 100'

FIELD BOOKS:
N/A

APPROVED: L. GEORGE
TITLE: CHAIRMAN
APPROVED: M. FORTE
TITLE: CHAIRMAN
APPROVED: D. CLARKE
TITLE: CHAIRMAN
APPROVED: J. MRAZ
TITLE: CHAIRMAN
DATE: 27 APRIL 2018
OFFICE CHIEF OF SURVEY

DEPARTMENT OF THE ARMY
NEW YORK DISTRICT
CORPS OF ENGINEERS
NEW YORK, NEW YORK 10007

OPERATIONS DIVISION
SURVEY SECTION
CENAN-OP-5

IN RIVER TO ARTHUR KILL
UT-OFF CHANNEL, NJ
CONDITION SURVEY

VH-102

SHEET 2 OF 2

FILE NO.: 63
REQUEST NO.: 4692/D/N1