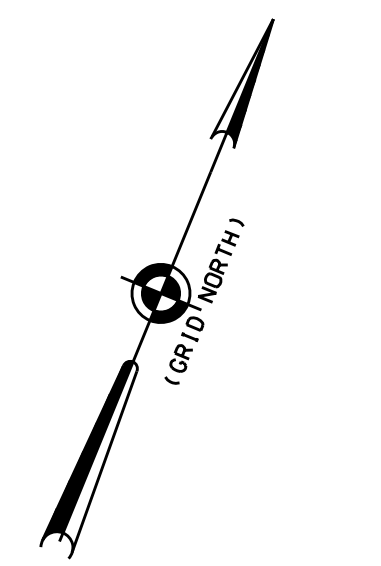


Table with 5 columns: No., Description, Date, Issue, and Rev. The table contains a list of revisions or sheet information.



N 144-000

E 1,000-000

N 146-000

E 1,000-000

E 1,000-000

N 146-000

GREEN CAN #13  
FLOOD  
12 MARCH 2018

GREEN BUDY #9 W/LIGHT  
EBB  
26 FEBRUARY 2018

RED BELL #12 W/LIGHT  
EBB  
26 FEBRUARY 2018

RED HUN #10  
EBB  
26 FEBRUARY 2018

RED BELL #8 W/LIGHT  
EBB  
26 FEBRUARY 2018

N 144-000

N 142-000

18' PROJECT  
20' PROJECT

APPROVED: L. GEORGE / P. LEARNS  
APPROVED: M. EDRIE / S. GIBSON  
APPROVED: D. CLORDE  
APPROVED: J. WRAZ  
DATE: 21 MARCH 2018

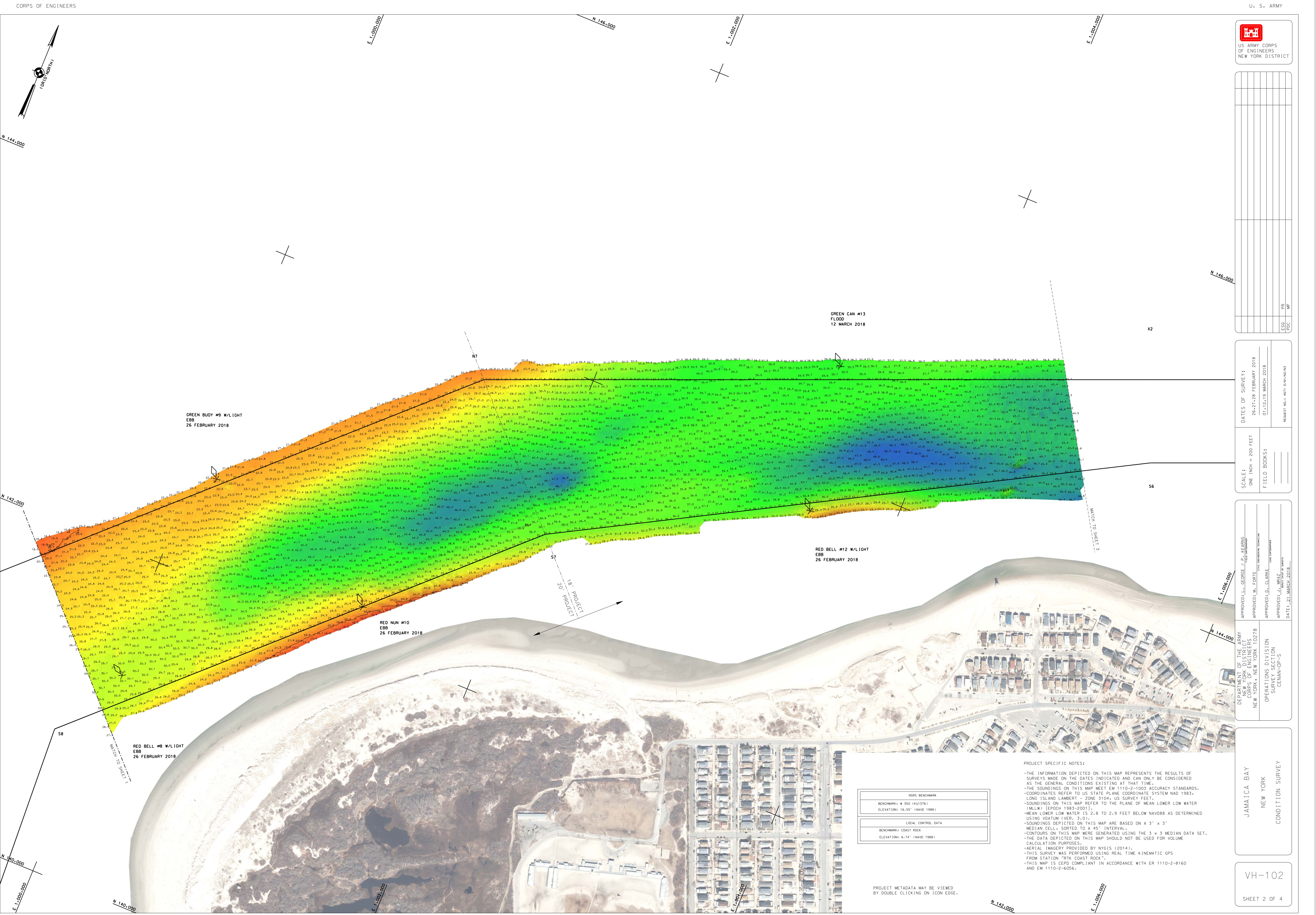
DEPARTMENT OF THE ARMY  
CORPS OF ENGINEERS  
NEW YORK, NEW YORK 10278  
OPERATIONS DIVISION  
SURVEILLANCE SECTION  
CENAN-OP-5

JAMATICA BAY  
NEW YORK  
CONDITION SURVEY

VH-102

SHEET 2 OF 4

FILE NO.: 138  
REQUEST NO.: 4671 D/N1/N2/N3



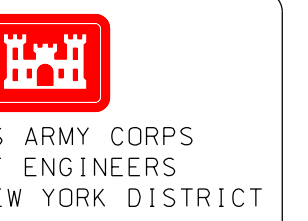
NSRS BENCHMARK  
BENCHMARK W 550 (K11376)  
ELEVATION: 16.55' (NAVD 1988)

LOCAL CONTROL DATA  
BENCHMARK: COAST ROCK  
ELEVATION: 6.74' (NAVD 1988)

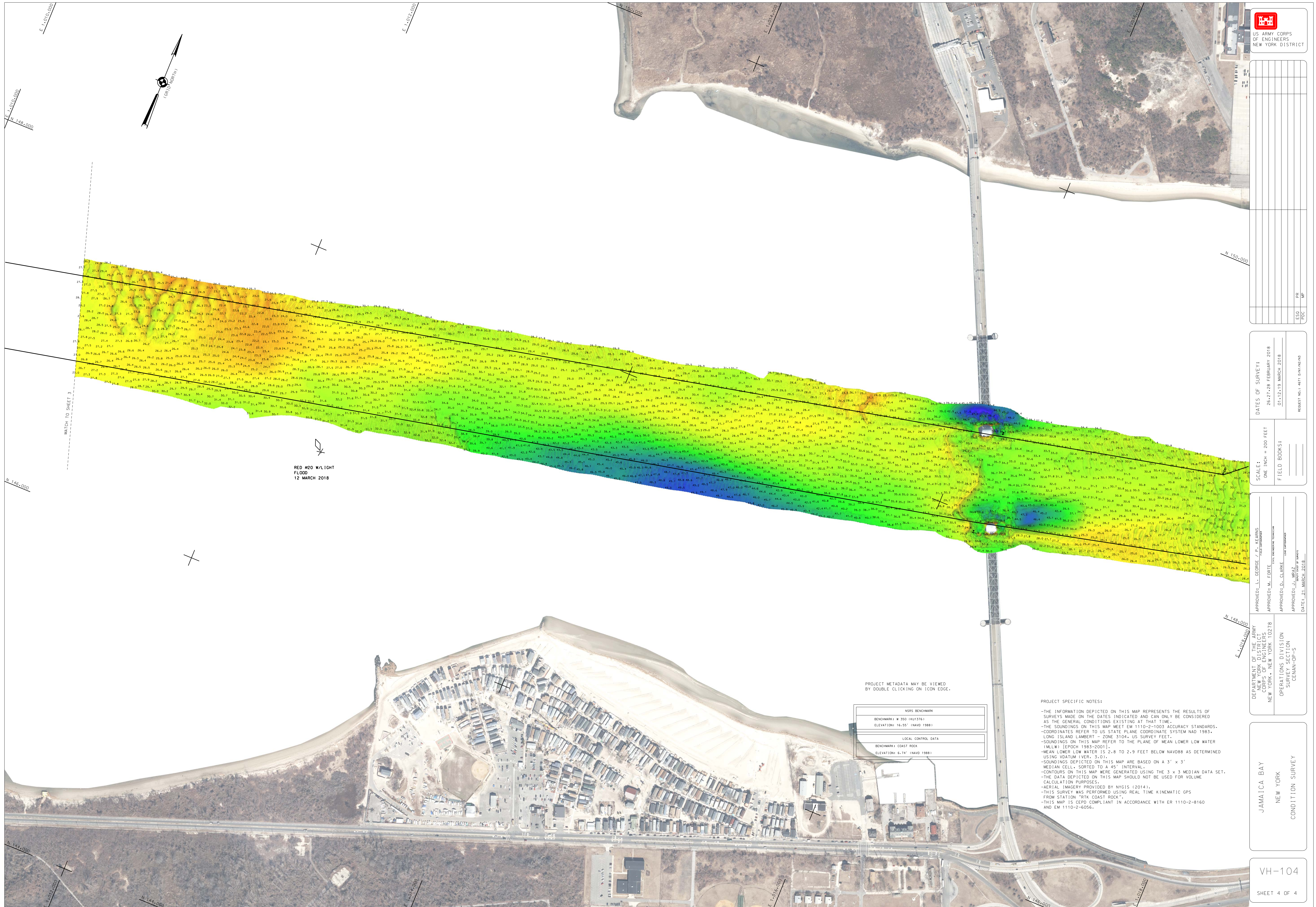
PROJECT SPECIFIC NOTES:  
-THE INFORMATION DEPICTED ON THIS MAP REPRESENTS THE RESULTS OF SURVEYS MADE ON THE DATES INDICATED AND CAN ONLY BE CONSIDERED AS THE GENERAL CONDITIONS EXISTING AT THAT TIME.  
-THE SOUNDINGS ON THIS MAP MEET EM 1110-2-1003 ACCURACY STANDARDS.  
-COORDINATES REFER TO US STATE PLANE COORDINATE SYSTEM NAD 1983, LONG ISLAND LAMBERT - ZONE 3104, US SURVEY FEET.  
-SOUNDINGS ON THIS MAP REFER TO THE PLANE OF MEAN LOWER LOW WATER (MLLW) [EPOCH 1983-2001].  
-MEAN LOWER LOW WATER IS 2.8 TO 2.9 FEET BELOW NAVD88 AS DETERMINED USING VDATUM EVER, 3.0-1.  
-SOUNDINGS DEPICTED ON THIS MAP ARE BASED ON A 3' x 3' MEDIAN CELL, SORTED TO A 45' INTERVAL.  
-CONTOURS ON THIS MAP WERE GENERATED USING THE 3 x 3 MEDIAN DATA SET.  
-THE DATA DEPICTED ON THIS MAP SHOULD NOT BE USED FOR VOLUME CALCULATION PURPOSES.  
-AERIAL IMAGERY PROVIDED BY NYGIS (2014).  
-THIS SURVEY WAS PERFORMED USING REAL TIME KINEMATIC GPS FROM STATION "RTK COAST ROCK".  
-THIS MAP IS CEQD COMPLIANT IN ACCORDANCE WITH ER 1110-2-8160 AND EM 1110-2-6056.

PROJECT METADATA MAY BE VIEWED BY DOUBLE CLICKING ON ICON EDGE.





US ARMY CORPS OF ENGINEERS  
NEW YORK DISTRICT



ESD	PR	RF

DATE OF SURVEY:	26.27.28 FEBRUARY 2018 01.12.19 MARCH 2018
-----------------	---

SCALE:	ONE INCH = 200 FEET
FIELD BOOKS:	

APPROVED: L. GEORGE / P. KEARNS	APPROVED: M. EDGIE	APPROVED: D. CLARKE	APPROVED: J. WRAZ
---------------------------------	--------------------	---------------------	-------------------

DEPARTMENT OF THE ARMY  
CORPS OF ENGINEERS  
NEW YORK, NEW YORK 10278  
OPERATIONS DIVISION  
SURVEILLANCE SECTION  
CENAN-OP-5

JAMAICA BAY  
NEW YORK  
CONDITION SURVEY

VH-104  
SHEET 4 OF 4

PROJECT METADATA MAY BE VIEWED BY DOUBLE CLICKING ON ICON EDGE.

NRS BENCHMARK
BENCHMARK: W 350 (401376)
ELEVATION: 16.55' (NAVD 1988)
LOCAL CONTROL DATA
BENCHMARK: COAST ROCK
ELEVATION: 6.74' (NAVD 1988)

PROJECT SPECIFIC NOTES:

- THE INFORMATION DEPICTED ON THIS MAP REPRESENTS THE RESULTS OF SURVEYS MADE ON THE DATES INDICATED AND CAN ONLY BE CONSIDERED AS THE GENERAL CONDITIONS EXISTING AT THAT TIME.
- THE SOUNDINGS ON THIS MAP MEET EM 1110-2-1003 ACCURACY STANDARDS.
- COORDINATES REFER TO US STATE PLANE COORDINATE SYSTEM NAD 1983, LONG ISLAND LAMBERT - ZONE 3104, US SURVEY FEET.
- SOUNDINGS ON THIS MAP REFER TO THE PLANE OF MEAN LOWER LOW WATER (MLLW) [EPOCH 1983-2001].
- MEAN LOWER LOW WATER IS 2.8 TO 2.9 FEET BELOW NAVD88 AS DETERMINED USING VDATUM IVER, 3.01.
- SOUNDINGS DEPICTED ON THIS MAP ARE BASED ON A 3' x 3' MEDIAN CELL, SORTED TO A 45' INTERVAL.
- CONTOURS ON THIS MAP WERE GENERATED USING THE 3 x 3 MEDIAN DATA SET.
- DATA DEPICTED ON THIS MAP SHOULD NOT BE USED FOR VOLUME CALCULATION PURPOSES.
- AERIAL IMAGERY PROVIDED BY NYGIS (2014).
- THIS SURVEY WAS PERFORMED USING REAL TIME KINEMATIC GPS FROM STATION "RTK COAST ROCK".
- THIS MAP IS CEPD COMPLIANT IN ACCORDANCE WITH EM 1110-2-8160 AND EM 1110-2-6056.