

LOCAL CONTROL DATA
BENCHMARK: AJO 10024
ELEVATION: 12.98' NAVD 1988

NSRS BENCHMARK
BENCHMARK: B5 (PID: KV0006)
ELEVATION: 63.49' NAVD 1988



DOUBLE CLICK ICON EDGE
TO VIEW PROJECT METADATA

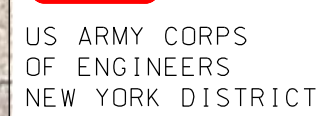
[illegible]

SCALE: ONE INCH = 100 FEET	DATES OF SURVEY: 11-30 JANUARY 2018 1-5, 12-16 FEBRUARY 2018
FIELD BOOKS:	FILE NO.: 1401 REQUEST NO.: 4660 D/A3

DEPARTMENT OF THE ARMY NEW YORK DISTRICT CORPS OF ENGINEERS NEW YORK, NEW YORK 10278	APPROVED: L. J. GEORGE CHIEF OF DISTRICT
	APPROVED: M. FORTE CIVIL ENGINEERING SECTION
	APPROVED: D. CLARKE VEH ENGINEERING
	APPROVED: J. NRAZ CHIEF OF DISTRICT
	DATE: 01 MARCH 1978

NEW YORK & NEW JERSEY CHANNELS
ARTHUR KILL
CONDITION SURVEY

VH-101

[illegible]

SCALE: ONE INCH = 100 FEET	DATES OF SURVEY: 11-30 JANUARY 2018 1-9-8, 12-16 FEBRUARY 2018
FIELD BOOKS: _____ _____ _____	FILE NO.: 1401 REQUEST NO.: 4660 D/M1/N3

APPROVED: L. GEORGE
FIELD ENGINEER

APPROVED: M. FORTE
CIVIL ENGINEERING TECHNICIAN

APPROVED: D. CLARKE
HEAD CRATERWALL

APPROVED: J. MRAZ
SENIOR CHIEF OF ALUMINUM

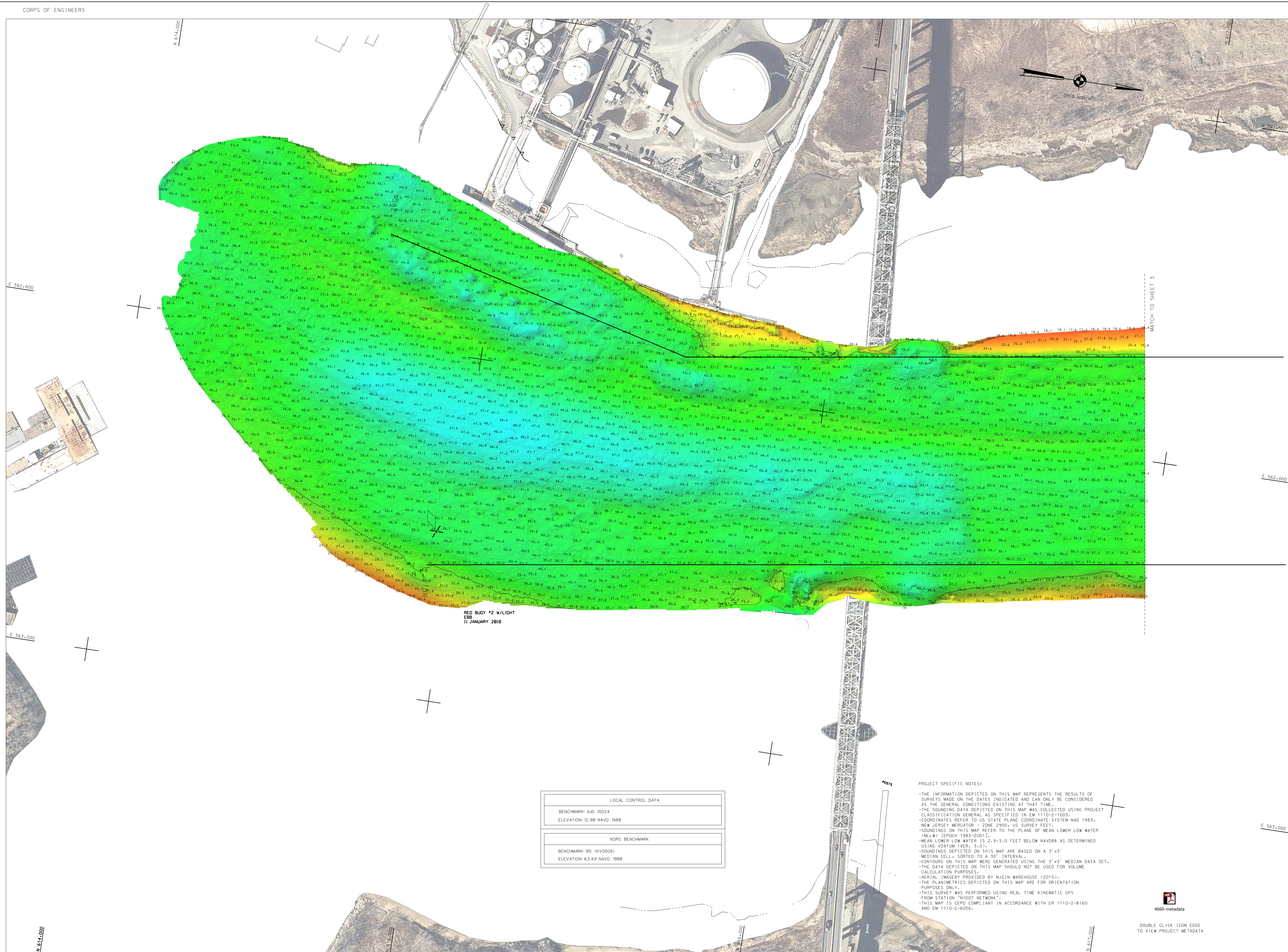
DATE: 01 MARCH 2018

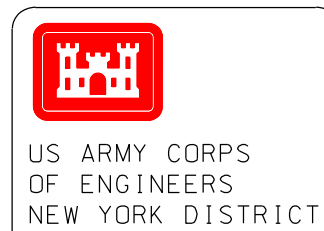
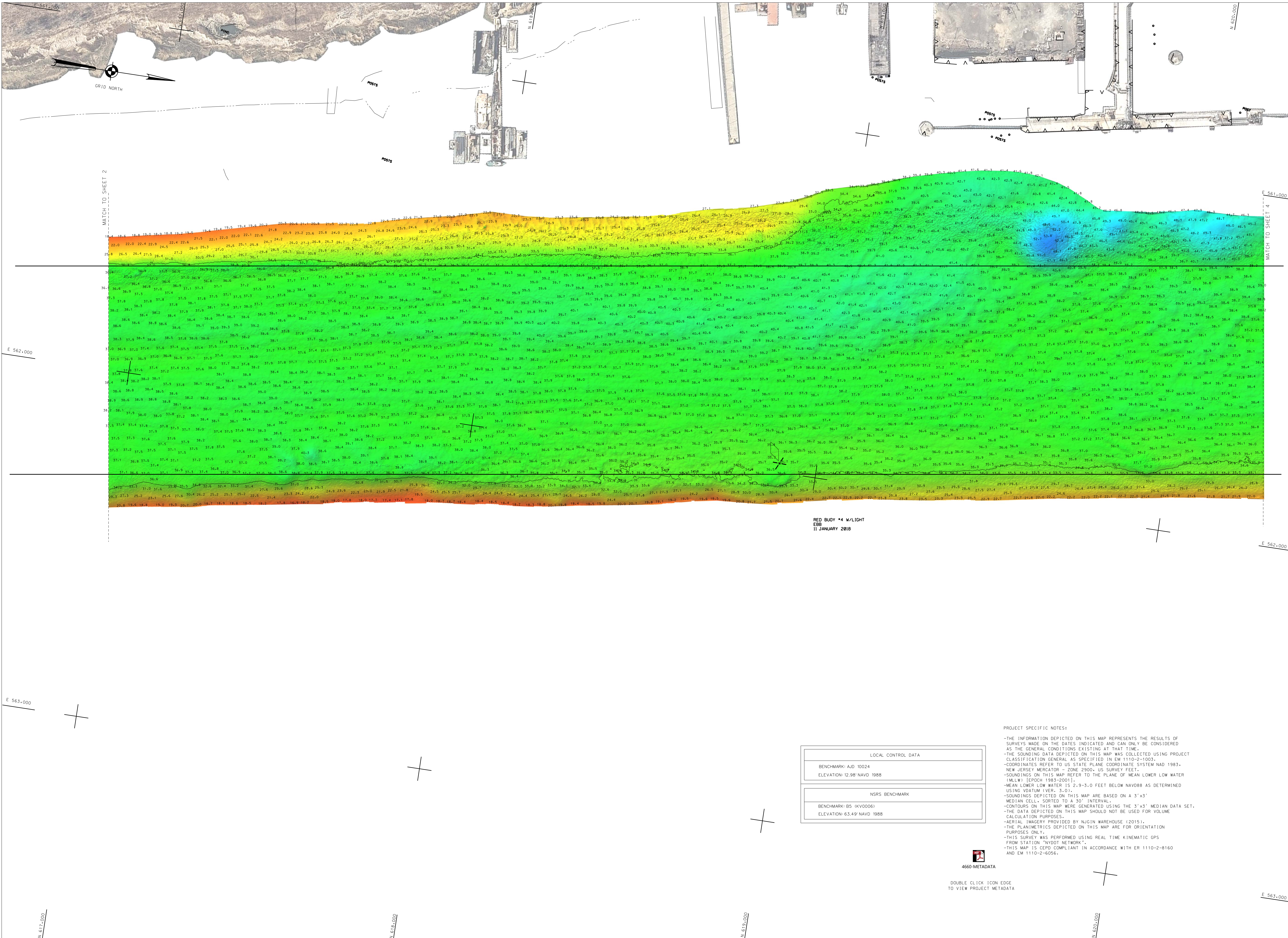
NEW YORK & NEW JERSEY CHANNELS
ARTHUR KILL
CONDITION SURVEY

VH-102

SHEET 2 OF 22

FILE NO.: 1401
REQUEST NO.: 4660 D/N1/N3





FILE NO. 1401
REQUEST NO. 4660 D/M/143
DATE 01 MARCH 2018
FILE NO. 1401
REQUEST NO. 4660 D/M/143
DATE 01 MARCH 2018

SCALE:	ONE INCH = 100 FEET
DATES OF SURVEY:	11-30 JANUARY 2018 1-5-8-12-15 FEBRUARY 2018
FIELD BOOKS:	

APPROVED: L. GEORGE	TEST ENGINEER
APPROVED: M. FORT	TEST ENGINEER
APPROVED: D. CLARK	TEST ENGINEER
APPROVED: J. MRAZ	TEST ENGINEER
DATE: 01 MARCH 2018	

DEPARTMENT OF THE ARMY NEW YORK DISTRICT NEW YORK, NEW YORK 10278	OPERATIONS DIVISION SURVEY SECTION CENNA-OPS
---	--

NEW YORK & NEW JERSEY CHANNELS ARTHUR KILL CONDITION SURVEY

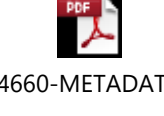
VH-103

SHEET 3 OF 22

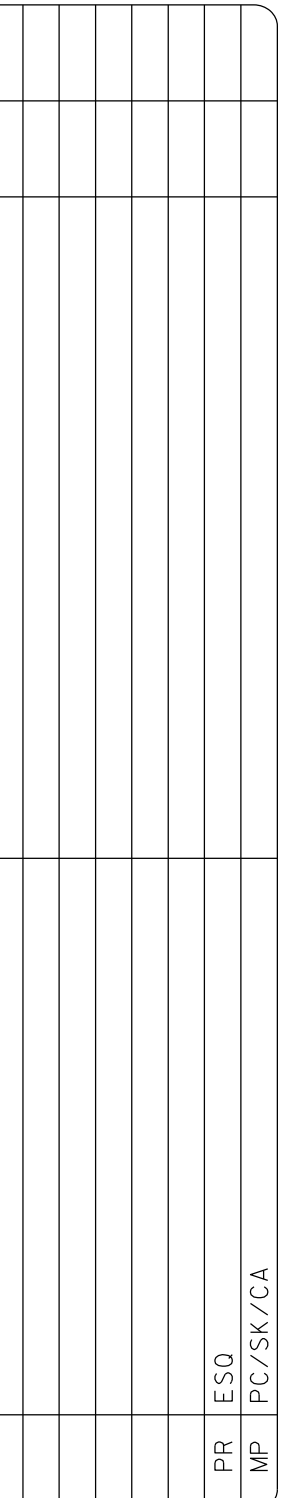
PROJECT SPECIFIC NOTES:

- THE INFORMATION DEPICTED ON THIS MAP REPRESENTS THE RESULTS OF SURVEYS MADE ON THE DATES INDICATED AND CAN ONLY BE CONSIDERED AS THE GENERAL CONDITIONS EXISTING AT THAT TIME.
- THE SOUNDING DATA DEPICTED ON THIS MAP WAS COLLECTED USING PROJECT CLASSIFICATION GENERAL AS SPECIFIED IN EM 1110-2-1003.
- COORDINATES REFER TO US STATE PLANE COORDINATE SYSTEM NAD 83, NEW JERSEY MERIDIAN - ZONE 2000, US SURVEY FEET.
- SOUNDINGS ON THIS MAP REFER TO THE PLANE OF MEAN LOWER LOW WATER (MLLW) [EPOCH 1985-2001].
- MEAN LOWER LOW WATER IS 2-9-3.0 FEET BELOW NAVD83 AS DETERMINED USING VDATUM (VER. 3.0).
- SOUNDINGS DEPICTED ON THIS MAP ARE BASED ON A 3'x3' MEDIAN CELL, SORTED TO A 30' INTERVAL.
- CONTOURS ON THIS MAP WERE GENERATED USING THE 3'x3' MEDIAN DATA SET.
- THE DATA DEPICTED ON THIS MAP SHOULD NOT BE USED FOR VOLUME CALCULATION PURPOSES.
- AERIAL IMAGERY PROVIDED BY NGSIN WAREHOUSE (2015).
- THE PLANIMETRICS DEPICTED ON THIS MAP ARE FOR ORIENTATION PURPOSES ONLY.
- THIS SURVEY WAS PERFORMED USING REAL TIME KINEMATIC GPS FROM STATION "NYDOT NETWORK".
- THIS MAP IS CEPO COMPLIANT IN ACCORDANCE WITH ER 1110-2-8160 AND EM 1110-2-6056.

LOCAL CONTROL DATA
BENCHMARK: AJD 10024 ELEVATION: 12.98' NAVD 1988
NSRS BENCHMARK
BENCHMARK: B5 (KVOOD6) ELEVATION: 63.49' NAVD 1988



DOUBLE CLICK ICON EDGE
TO VIEW PROJECT METADATA



ONE INCH = 100 FEET	11-30 JANUARY 2018 1-5-8-12-16 FEBRUARY 2018
FIELD BOOKS:	FILE NO.: 1401 REQUEST NO.: 4660 D/N1/N3

NEW YORK, NEW YORK 10278

CORPS OF ENGINEERS

OPERATIONS DIVISION

SURVEY SECTION

CENAN-QP-S

APPROVED: M. FORTE

CIVIL ENGINEERING SECTION

APPROVED: D.C. CLARKE

FIELD ENGINEER

APPROVED: J.L. NEASE

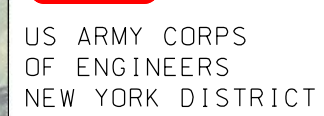
DEPUTY CHIEF OF PARTY

DATE: 01 MARCH 1988

NEW YORK & NEW JERSEY CHANNEL
ARTHUR KILL
CONDITION SURVEY

VH-104

SHEET 4 OF 22

[illegible]

SCALE: ONE INCH = 100 FEET	DATES OF SURVEY: 11.30 JANUARY 2018 1.5-12-16 FEBRUARY 2018
FIELD BOOKS:	FILE NO.: 1401 REQUEST NO.: 4660 D/M1/N3

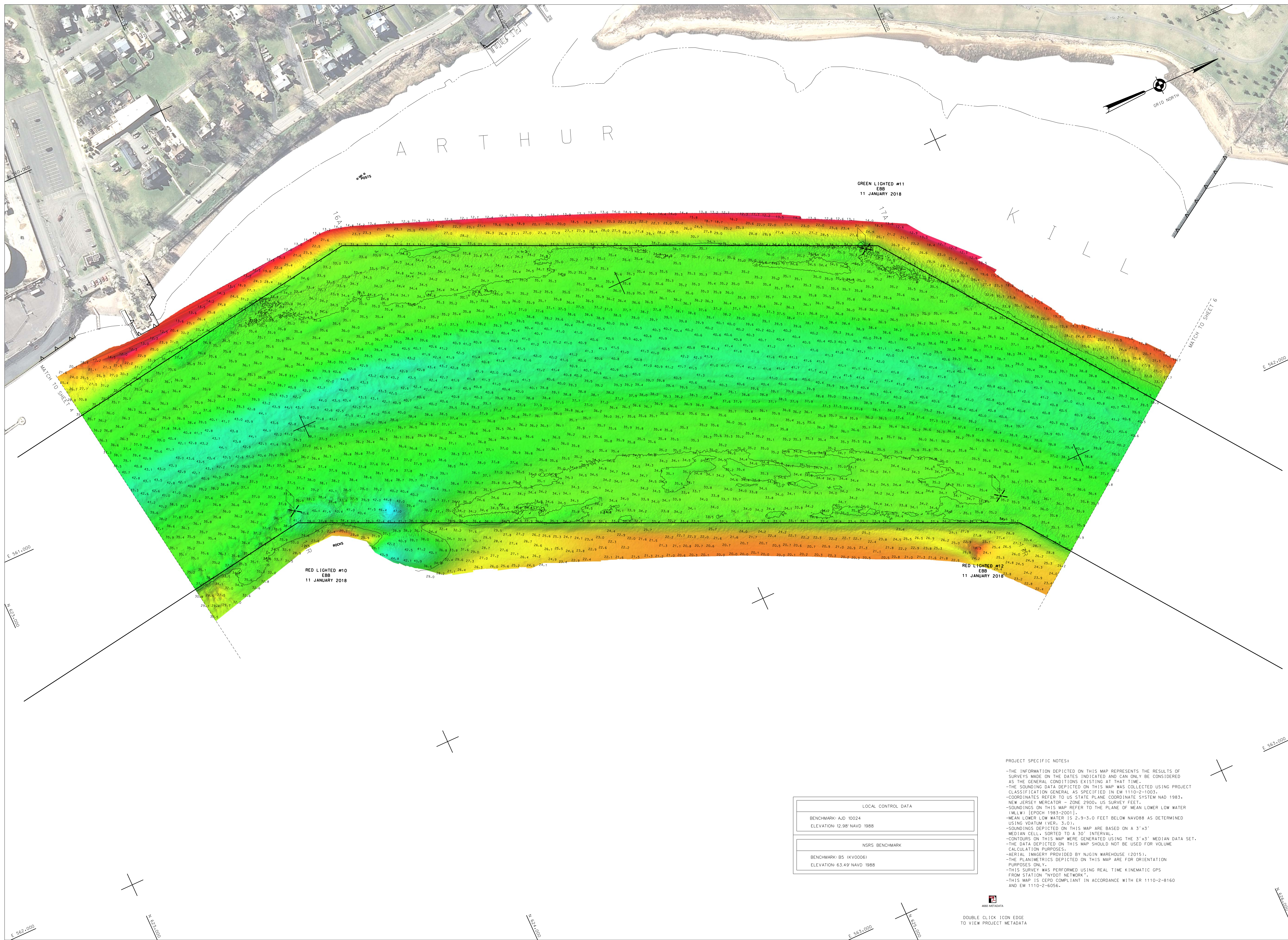
DEPARTMENT OF THE ARMY NEW YORK DISTRICT CORPS OF ENGINEERS NEW YORK, NEW YORK 10278	APPROVED: L. L. GEORGE CHIEF, ENGINEERING SECTION
OPERATIONS DIVISION SURVEY SECTION CEMAN-04-S	APPROVED: M. FORT CHIEF, ENGINEERING SECTION
	APPROVED: D. CLARKE TOP OF MOUNTAIN
	APPROVED: J. L. MEAZ CHIEF, ENGINEERING SECTION
	DATE: 01 MARCH 2018

NEW YORK & NEW JERSEY CHANNELS
ARTHUR KILL
CONDITION SURVEY

VH-105

SHEET 5 OF 22

FILE NO.: 1401
REQUEST NO.: 4660 D/N1/N3





SCALE: ONE INCH = 100 FEET	DATES OF SURVEY: 11-30 JANUARY 2018 1-5-6,12-16 FEBRUARY 2018
FIELD BOOKS:	FILE NO.: 1401 REQUEST NO.: 4660 D/M1/N3

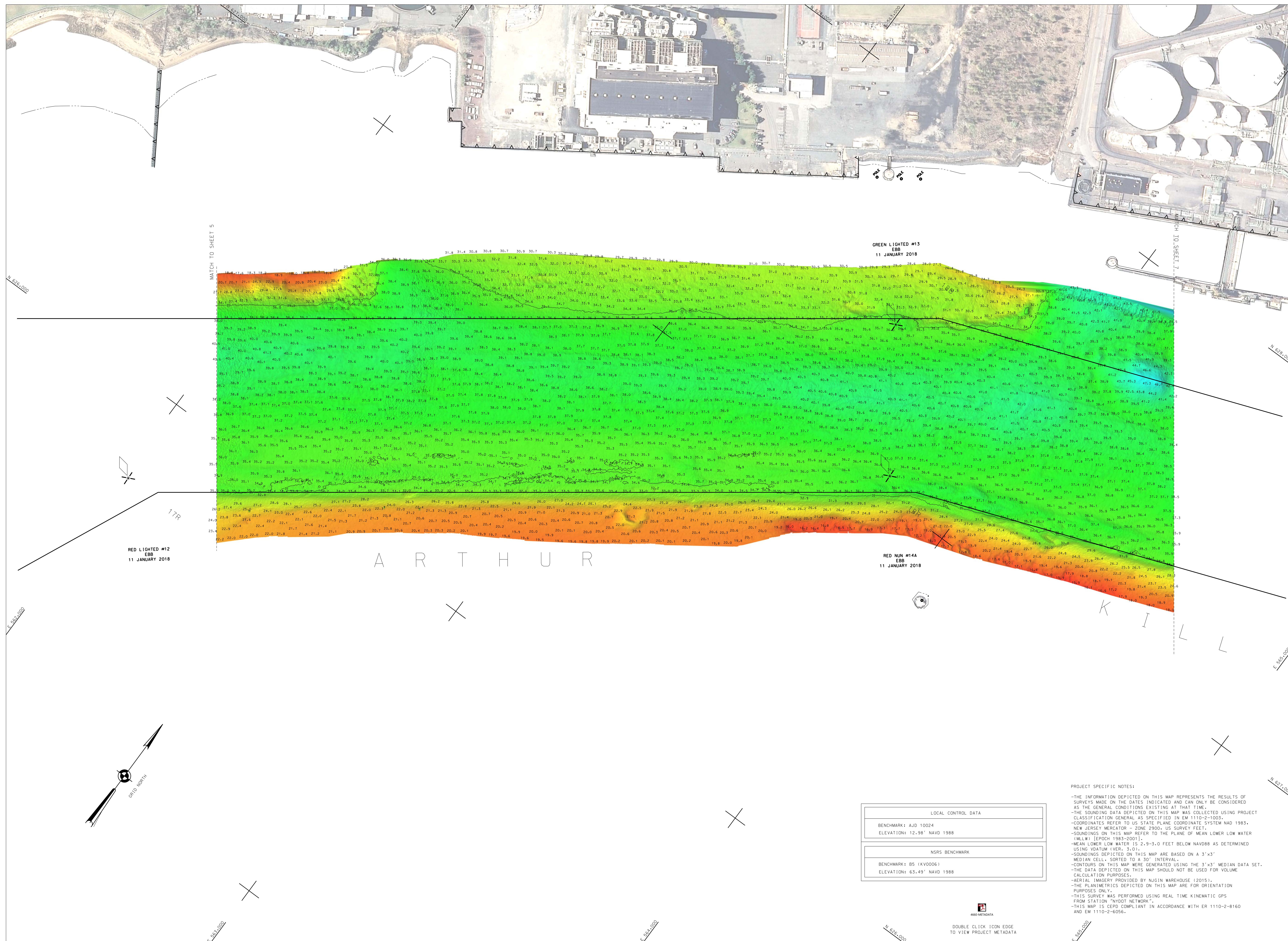
DEPARTMENT OF THE ARMY ENGINEERS CORPS OF ENGINEERS NEW YORK, NEW YORK 10278	APPROVED: L. GEORGE FIELD ASSISTANT	CIVIL ENGINEERING TECHNOLOGIST
OPERATIONS DIVISION SURVEY SECTION CENAN-09-S	APPROVED: M. FORTE	
	APPROVED: D. CLARKE	
	APPROVED: J. MEYER UNIT CHIEF OF PARTY	

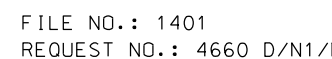
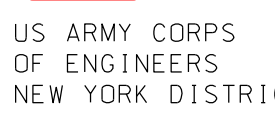
NEW YORK & NEW JERSEY CHANNELS
ARTHUR KILL
CONDITION SURVEY

VH-106

SHEET 6 OF 22

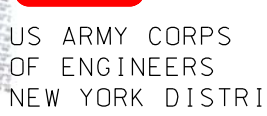
FILE NO.: 1401
REQUEST NO.: 4660





PROJECT SPECIFIC NOTES:

- THE INFORMATION DEPICTED ON THIS MAP REPRESENTS THE RESULTS OF SURVEYS MADE ON THE DATES INDICATED AND CAN ONLY BE CONSIDERED AS THE GENERAL CONDITIONS EXISTING AT THAT TIME.
- THE SOUNDING DATA DEPICTED ON THIS MAP WAS COLLECTED USING PROJECT CLASSIFICATION AND SPECIFIED IN EN 11102-1003.
- COORDINATES REFER TO US STATE PLANE COORDINATE SYSTEM NAD 83.
- NEW JERSEY EPOCH - ZONE 2900, US SURVEY FEET.
- SOUNDINGS ON THIS MAP REFER TO THE PLANE OF MEAN LOWER LOW WATER (MLLW) [EPCH 1983-2001].
- MEAN LOWER LOW WATER IS 2.9 - 3.0 FEET BELOW NAVD83 AS DETERMINED USING VDATUM 84-3.
- SOUNDINGS DEPICTED ON THIS MAP ARE BASED ON A 3' x 3' MEDIAN CELL, SORTED TO A 30' INTERVAL.
- CONTOURS ON THIS MAP WERE GENERATED USING THE 3' x 3' MEDIAN DATA SET.
- THE PLANT METRIC DEPICTED ON THIS MAP SHOULD NOT BE USED FOR VOLUME CALCULATION PURPOSES.
- AERIAL IMAGERY PROVIDED BY NGUN WAREHOUSE. (2015).
- THE DATA METRIC DEPICTED ON THIS MAP ARE FOR ORIENTATION PURPOSES ONLY.
- THIS SURVEY WAS PERFORMED USING REAL TIME KINEMATIC GPS FROM STATION "NAD 83".
- THIS MAP IS CEPD COMPLIANT IN ACCORDANCE WITH ER 1110-2-8616 AND EN 11102-6056.

[illegible]

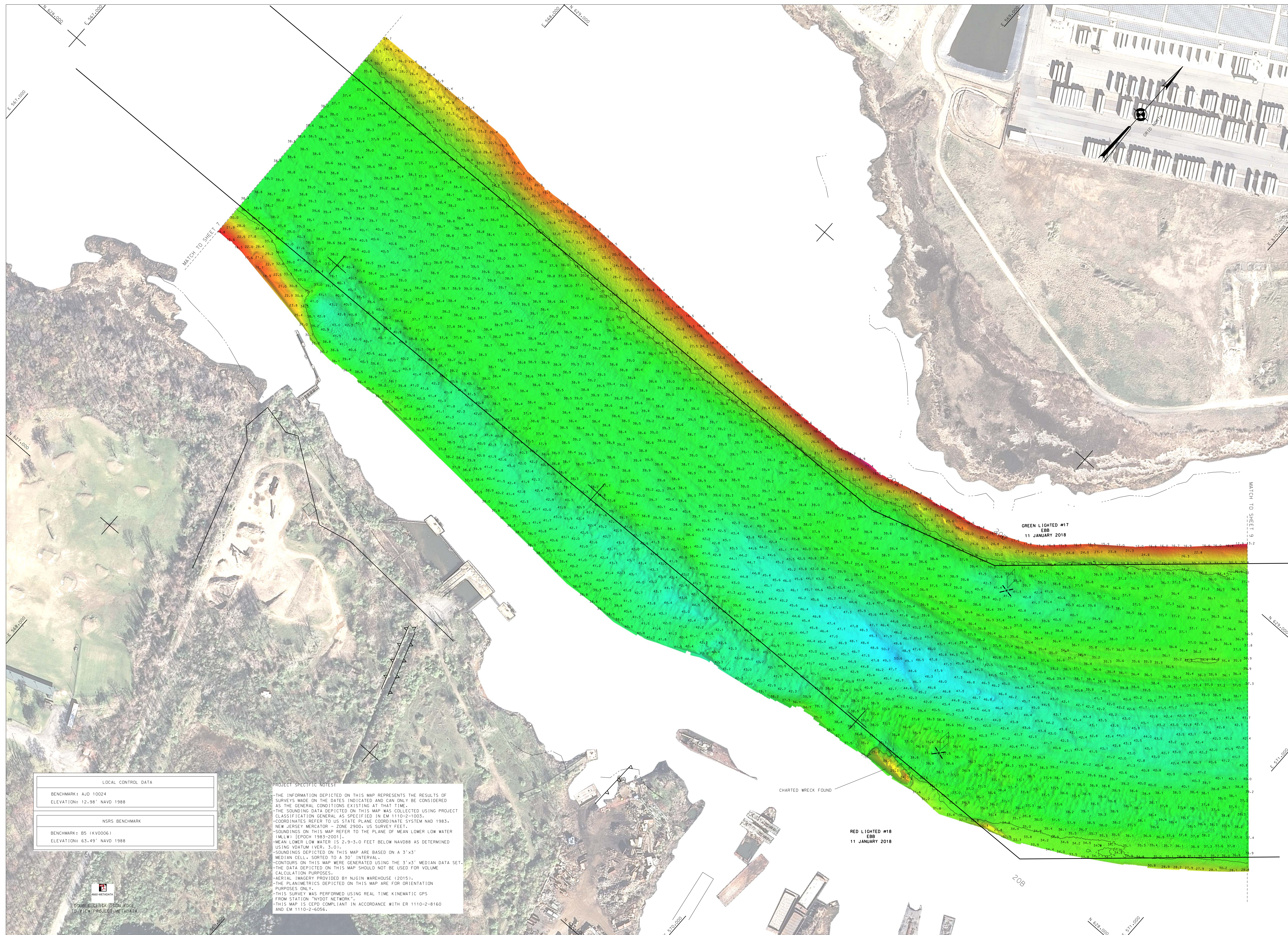
SCALE: ONE INCH = 100 FEET	DATES OF SURVEY: 11-30 JANUARY 2018 1-5-8-12-16 FEBRUARY 2018
FIELD BOOKS:	FILE NO.: 1401

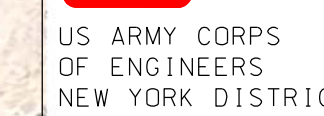
DEPARTMENT OF THE ARMY NEW YORK DISTRICT CORPS OF ENGINEERS NEW YORK, NEW YORK 10278	APPROVED: L. GEORGE FIELD COMMANDER
	APPROVED: M. FORTE CIVIL ENGINEERING TECHNICIAN
OPERATIONS DIVISION SURVEY SECTION CFMANN-COPS	APPROVED: D. CLARKE LABORATORY
	APPROVED: J. MGAZ7

NEW YORK & NEW JERSEY CHANNELS
ARTHUR KILL
CONDITION SURVEY

VH-108

FILE NO.: 1401
REQUEST NO.: 4660 D/N1/N3





DATES OF SURVEY:
 11.30 JANUARY 2018
 1.5-8.12-16 FEBRUARY 2018

FILE NO.: 1401
 REQUEST NO.: 4660 D/N1/N3

SCALE:
ONE INCH = 100 FEET

FIELD BOOKS:

APPROVED: L. GEORGE
FIELD COORDINATOR

APPROVED: M. FORTE
CIVIL ENGINEERING TECHNICIAN

APPROVED: D. CLARKE
LEAD COORDINATOR

APPROVED: J. MRAZ
SENIOR CHIEF OF MOUNTAIN

DEPARTMENT OF THE ARMY
NEW YORK DISTRICT
CORPS OF ENGINEERS
NEW YORK, NEW YORK 10278

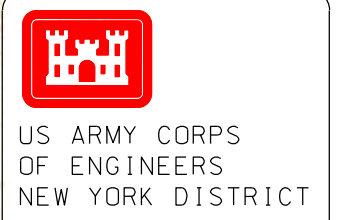
OPERATIONS DIVISION
SURVEY SECTION
CENAN-OP-S

NEW YORK & NEW JERSEY CHANNELS
ARTHUR KILL
CONDITION SURVEY

VH-109

SHEET 9 OF 22

FILE NO.: 1401
REQUEST NO.: 4660 D/H

[illegible]

SCALE: ONE INCH = 100 FEET	DATES OF SURVEY: 11.30 JANUARY 2018 1.5-8.12-16 FEBRUARY 2018
FIELD BOOKS: _____ _____ _____	FILE NO.: 1401 REQUEST NO.: 4660 D/M/V/N3

APPROVED: L. GEORGE
FIELD COORDINATOR

APPROVED: M. FORTE
CIVIL ENGINEERING TECHNICIAN

APPROVED: D. CLARKE
LEAD COORDINATOR

APPROVED: J. MRAZ
ADJ. CHIEF OF SURVEYS

DATE: 01 MARCH 2018

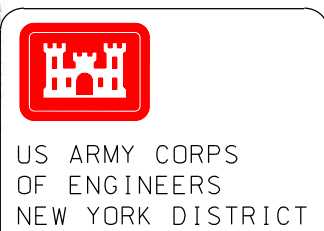
DEPARTMENT OF THE ARMY
NEW YORK DISTRICT
CORPS OF ENGINEERS
NEW YORK, NEW YORK 10271

OPERATIONS DIVISION
SURVEY SECTION
CENAN-OP-S

NEW YORK & NEW JERSEY CHANNELS
ARTHUR KILL
CONDITION SURVEY

VH-110

SHEET 10 OF 22



SCALE: ONE INCH = 100 FEET	DATES OF SURVEY: 11-30 JANUARY 2018 1-5-8-12-16 FEBRUARY 2018
FIELD BOOKS: _____ _____ _____	FILE NO.: 1401 REQUEST NO.: 4660/D/1/N/3

DEPARTMENT OF THE ARMY NEW YORK DISTRICT NEW YORK OFFICE NEW YORK - NEW YORK 10278	APPROVED: L. GEORGE CHIEF OF DISTRICT
OPERATIONS DIVISION SURVEY SECTION CENAH-9	APPROVED: D. CLARKE CHIEF OF SECTION
DATE: 01 MARCH 1918	APPROVED: J. WATZ CHIEF OF DIVISION

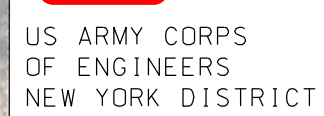
NEW YORK & NEW JERSEY CHANNELS
ARTHUR KILL
CONDITION SURVEY

VH-111

SHEET 11 OF 22

FILE NO.: 1401

- THE INFORMATION DEPICTED ON THIS MAP REPRESENTS THE RESULTS OF SURVEYS MADE ON THE DATES INDICATED AND CAN ONLY BE CONSIDERED AS THE GENERAL CONDITIONS EXISTING AT THAT TIME.
- THE SOUNDING DATA DEPICTED ON THIS MAP WAS COLLECTED USING PROJECT DATA COLLECTION GENERAL AS SPECIFIED IN EM 1110-2-1003.
- COORDINATES REFER TO US STATE PLANE COORDINATE SYSTEM NAD 83, NEW JERSEY MERCATOR - ZONE 2900, US SURVEY FEET.
- SOUNDINGS ON THIS MAP REFER TO THE PLANE OF MEAN LOWER LOW WATER (MLLW) [EPDCH 1983-2001].
- MEAN LOWER LOW WATER IS 2.9-3.0 FEET BELOW NAVD88 AS DETERMINED USING DATUM VELOCITY.
- SOUNDINGS DEPICTED ON THIS MAP ARE BASED ON A 3"x3" MEDIAN CELL, SORTED TO A 30' INTERVAL.
- SOUNDINGS DEPICTED ON THIS MAP ARE BASED ON THE 3"x3" MEDIAN DATA SET.
- THE DATA DEPICTED ON THIS MAP SHOULD NOT BE USED FOR VOLUME CALCULATION PURPOSES.
- AERIAL IMAGERY PROVIDED BY NUGEN WAREHOUSE (2015).
- THE PLANIMETRICS DEPICTED ON THIS MAP ARE FOR ORIENTATION PURPOSES ONLY.
- THIS SURVEY WAS PERFORMED USING REAL TIME KINEMATIC GPS FROM STATION "NY02 NETWORK".
- THIS MAP IS CEPD COMPLIANT IN ACCORDANCE WITH EM 1110-2-8160 AND EM 1110-2-6056.

[illegible]

DATES OF SURVEY:
11.30 JANUARY 2018
1.5-8.12-16 FEBRUARY 2018

FILE NO.: 1401
REQUEST NO.: 4660/D/N1/N3

SCALE:
ONE INCH = 100 FEET

FIELD BOOKS:

APPROVED: L. GEORGE
FILED CARLOS/AMER

APPROVED: M. FORTE
CIVIL ENGINEERING TECHNICIAN

APPROVED: D. CLARKE
LEAD CARLOS/AMER

APPROVED: J. MRAZ
DEPUTY CHIEF OF SURVEYS

DATE: 01 MARCH 2018

DEPARTMENT OF THE ARMY
NEW YORK DISTRICT
CORPS OF ENGINEERS
NEW YORK, NEW YORK 10278

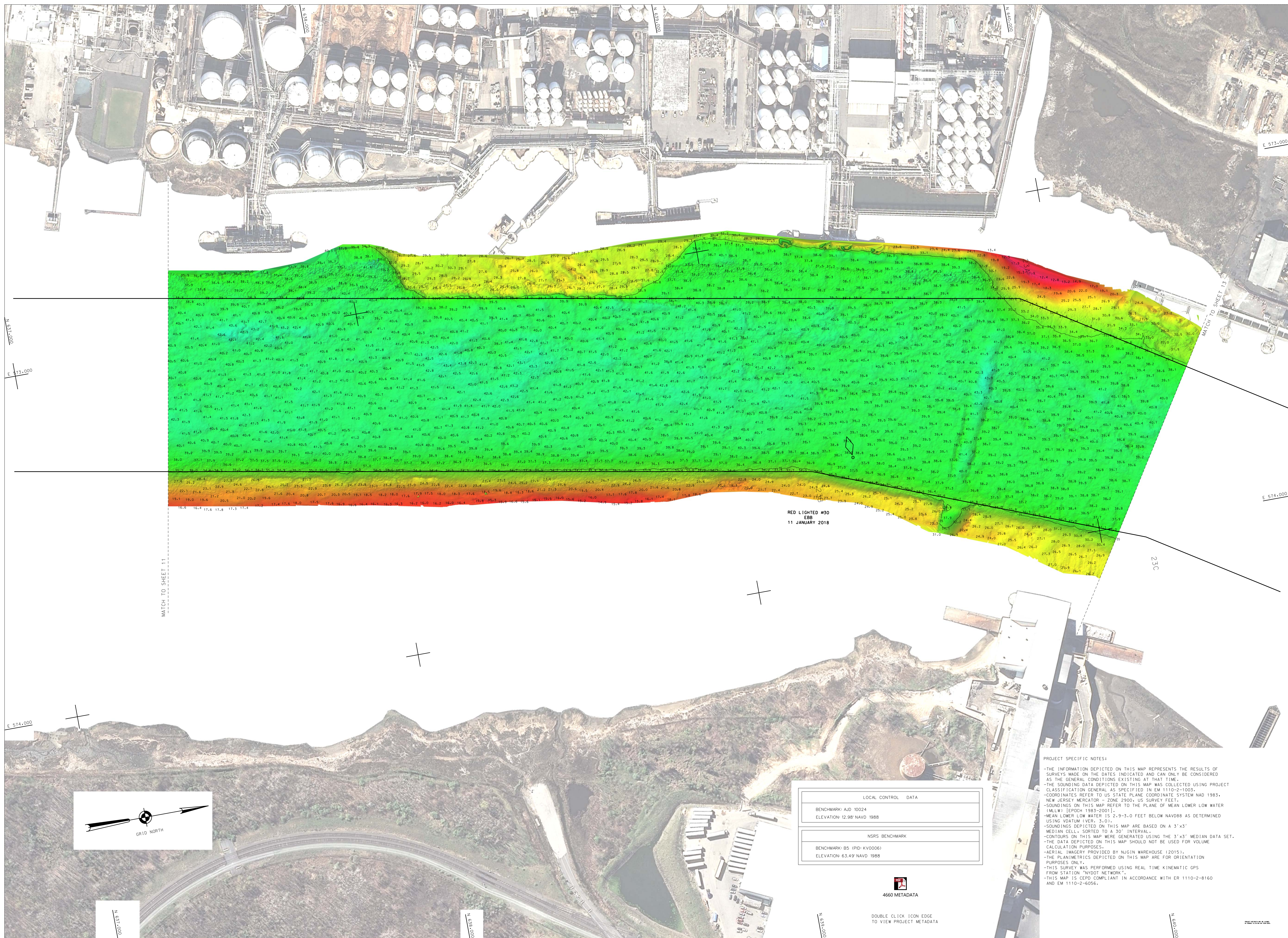
OPERATIONS DIVISION
SURVEY SECTION
CENAN-OP-S

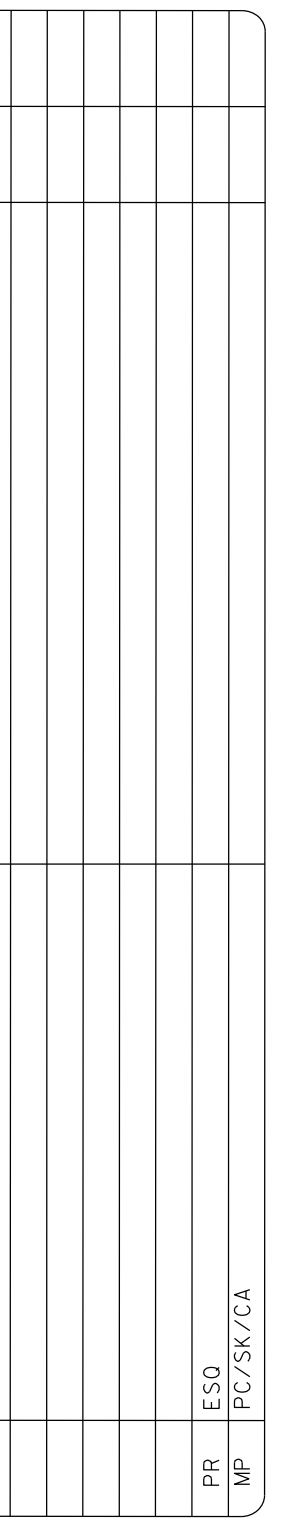
NEW YORK & NEW JERSEY CHANNELS
ARTHUR KILL
CONDITION SURVEY

VH-112

SHEET 12 OF 22

FILE NO.: 1401
REQUEST NO.: 4660/D/N1/N3





ONE INCH = 100 FEET

FIELD BOOKS:

11-30 JANUARY 2018

1-5-8.12-16 FEBRUARY 2018

FILE NO.: 1401

REQUEST NO.: 4660/D/N1/N3

FIELD ENGINEER

APPROVED: M. FORTE

CIVIL ENGINEERING TECHNICIAN

APPROVED: D. CLARKE

LEAD ENGINEER

APPROVED: J. MRAZ

DEPUTY CHIEF OF SURVEYS

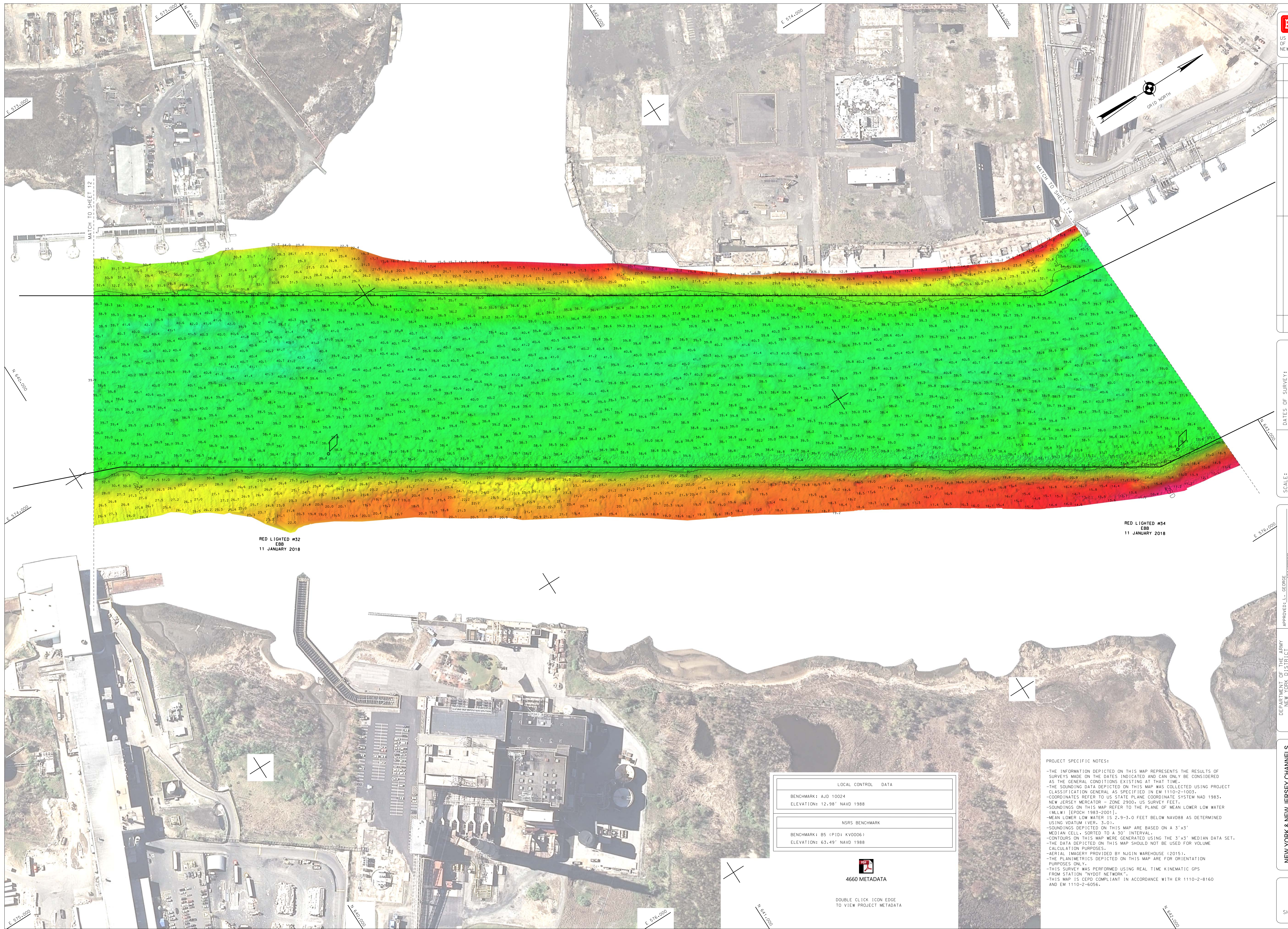
DATE: 01 MARCH 2018

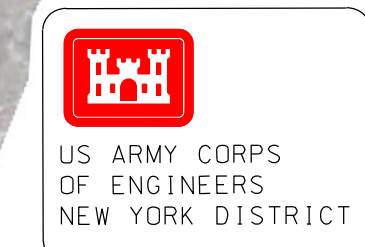
ARTHUR KILL
CONDITION SURVEY

VH-113

SHEET 13 OF 22

NO.: 1401
EST NO.: 4660/D/N1/N3



[illegible]

SCALE: ONE INCH = 100 FEET	DATES OF SURVEY: <u>11.30 JANUARY 2018</u> <u>1.5-8.12-16 FEBRUARY 2018</u>
FIELD BOOKS: _____ _____ _____	FILE NO.: 1401 REQUEST NO.: 4660/D/N1/N3

APPROVED: L. GEORGE
TITLE: COORDINATOR

APPROVED: M. FORTE
TITLE: EXECUTING SECRETAR

APPROVED: D. CLARKE
TITLE: COORDINATOR

APPROVED: J. BRAZ
DATE: 01 MARCH 2018

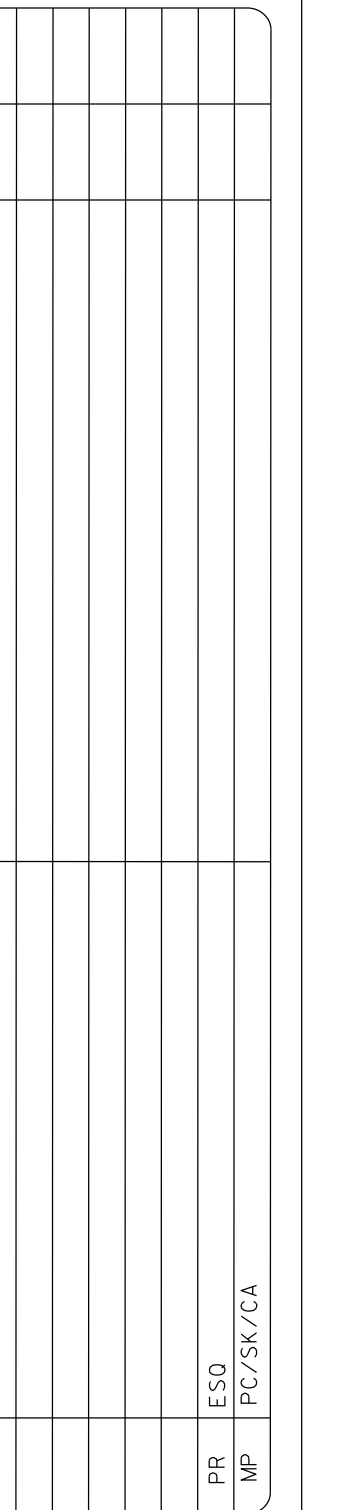
DEPARTMENT OF THE ARMY
NEW YORK DISTRICT
CORPS OF ENGINEERS
NEW YORK, NEW YORK 10278

OPERATIONS DIVISION
SURVEY SECTION
CENAN-OP-S

NEW YORK & NEW JERSEY CHANNELS
ARTHUR KILL
CONDITION SURVEY

VH-114

FILE NO.: 1401
REQUEST NO.: 4660/D/N1/N



ONE INCH = 100 FEET	FIELD BOOKS: _____ _____ _____
11-30 JANUARY 2018 <u>1-5-8, 12-16 FEBRUARY 2018</u>	
FILE NO.: 1401 REQUEST NO.: 4660/D/M1/N3	

FIELD CATALOGUER

APPROVED: M. FORTÉ
CIVIL ENGINEERING TECHNICIAN

APPROVED: D. CLARKE
LEAD CATALOGUER

APPROVED: J. MRAZ
SENIOR CHIEF OF WORKS

DATE: 01 MARCH 2018

CORPS OF ENGINEERS
NEW YORK, NEW YORK 10278

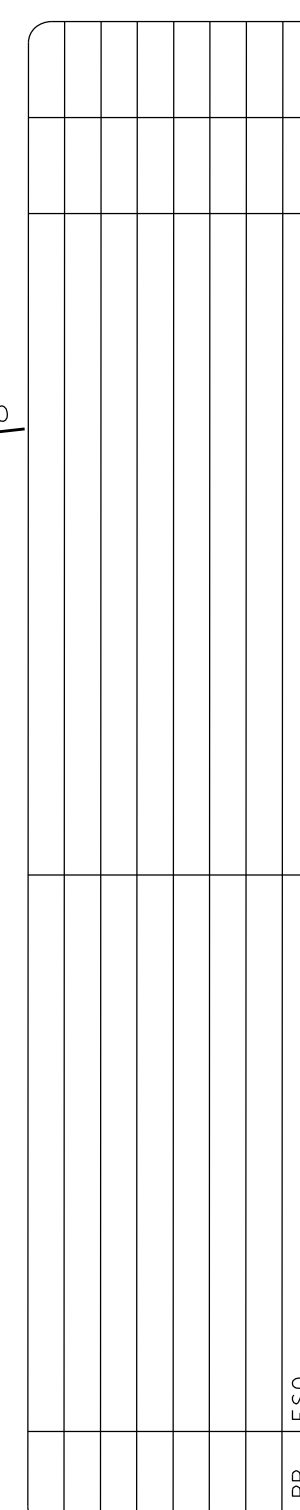
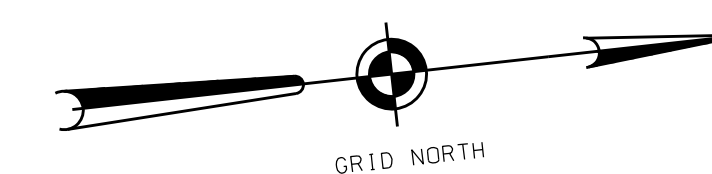
OPERATIONS DIVISION
SURVEY SECTION
CEMAN-OP-S

NEW YORK & NEW JERSEY CHANNELS
ARTHUR KILL
CONDITION SURVEY

VH-115

576,000 SHEET 15 OF 22

EST NO.: 4660/D/N1/N3



DATES OF SURVEY:
11-30 JANUARY 2018
1-5-8, 12-16 FEBRUARY 2018

FILE NO.: 1401
 PROJECT NO.: ACCORDIAN-2

SCALE:
ONE INCH = 100 FEET

FIELD BOOKS:

APPROVED: L. GEORGE
FIELD CARTOGRAPHER

APPROVED: M. FORTE
CIVIL ENGINEERING TECHNICIAN

APPROVED: D. CLARKE
LEAD CARTOGRAPHER

APPROVED: J. MRAZ
PROJECT MANAGER

DEPARTMENT OF THE ARMY
NEW YORK DISTRICT
CORPS OF ENGINEERS
NEW YORK, NEW YORK 10278

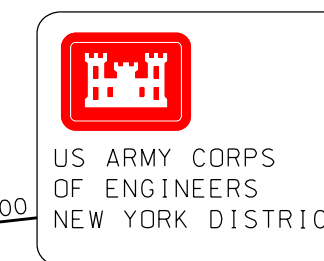
OPERATIONS DIVISION
SURVEY SECTION
CENAN-OP-S

NEW YORK & NEW JERSEY CHANNELS
ARTHUR KILL
CONDITION SURVEY

VH-116

SHEET 16 OF 2

FILE NO.: 1401
REQUEST NO.: 4660/D

[illegible]

SCALE: ONE INCH = 100 FEET	DATES OF SURVEY: 11.30 JANUARY 2018 <u>1.5.8.12-16 FEBRUARY 2018</u>
FIELD BOOKS: _____ _____ _____	FILE NO.: 1401 REQUEST NO.: 4650/D/N/N3

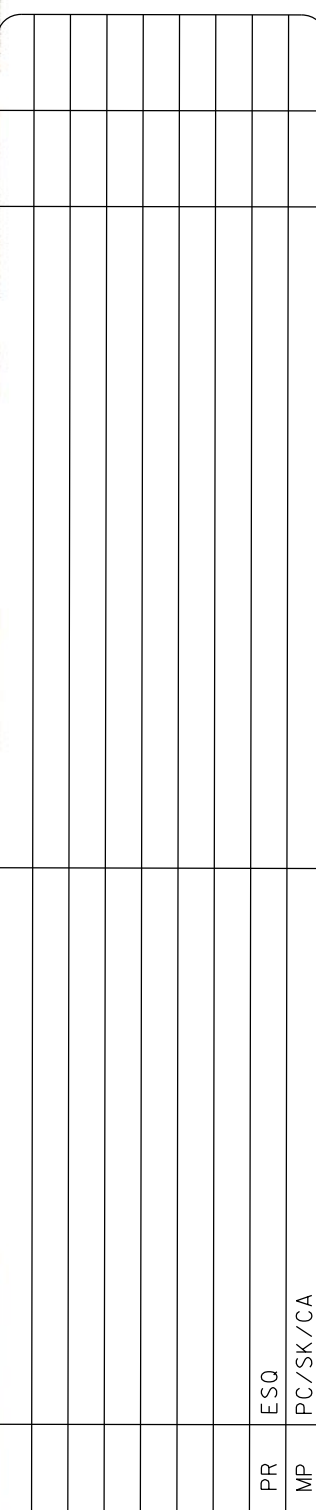
DEPARTMENT OF THE ARMY CORPS OF ENGINEERS NEW YORK, NEW YORK 10278	APPROVED: L. L. GEORGE JULY 1958
OPERATIONS DIVISION SURVEY SECTION CENW-40-S	APPROVED: M. FORTÉ CIVIL ENGINEERING DIVISION
	APPROVED: D. CLARKE
	APPROVED: J. J. MARZ CHIEF OF SURVEY

VH-117

NEW YORK & NEW JERSEY CHANNELS
ARTHUR KILL
CONDITION SURVEY

SHEET 17 OF 22

FILE NO.: 1401
REQUEST NO.: 4660/D/M



DATES OF SURVEY:
 11.30 JANUARY 2018
 1.5-8.12-16 FEBRUARY 2018

FILE NO.: 1401
 REQUEST NO.: 4550/DMS/NIR

SCALE:
ONE INCH = 100 FEET

FIELD BOOKS: _____

APPROVED: L. GEORGE
FIELD COORDINATOR

APPROVED: M. FORTE
CIVIL ENGINEERING TECHNICIAN

APPROVED: D. CLARKE
LEAD CARPENTERS

APPROVED: J. MRAZ

DEPARTMENT OF THE ARMY
NEW YORK DISTRICT
CORPS OF ENGINEERS
NEW YORK, NEW YORK 10278

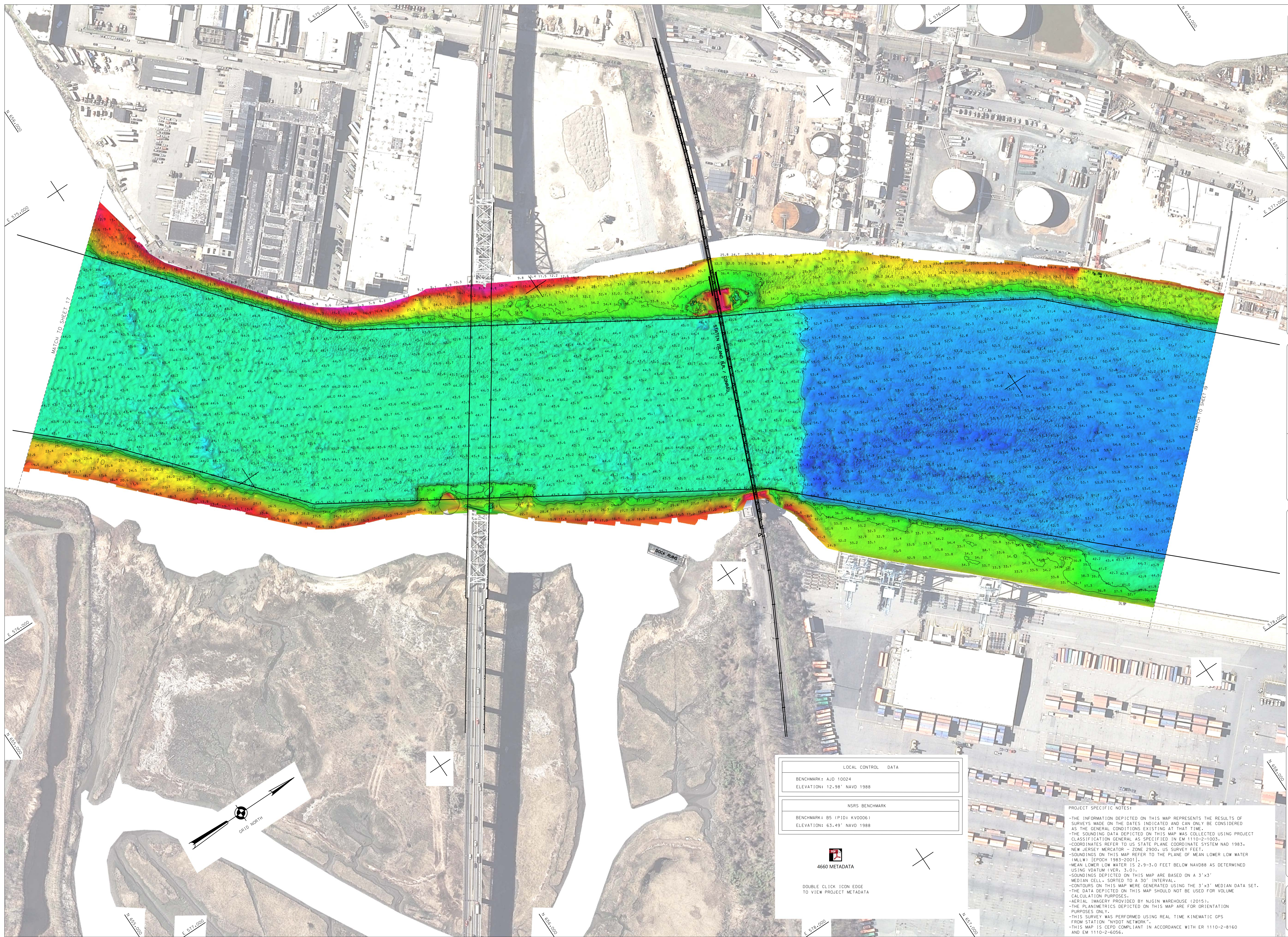
OPERATIONS DIVISION
SURVEY SECTION
CENAN-OP-S

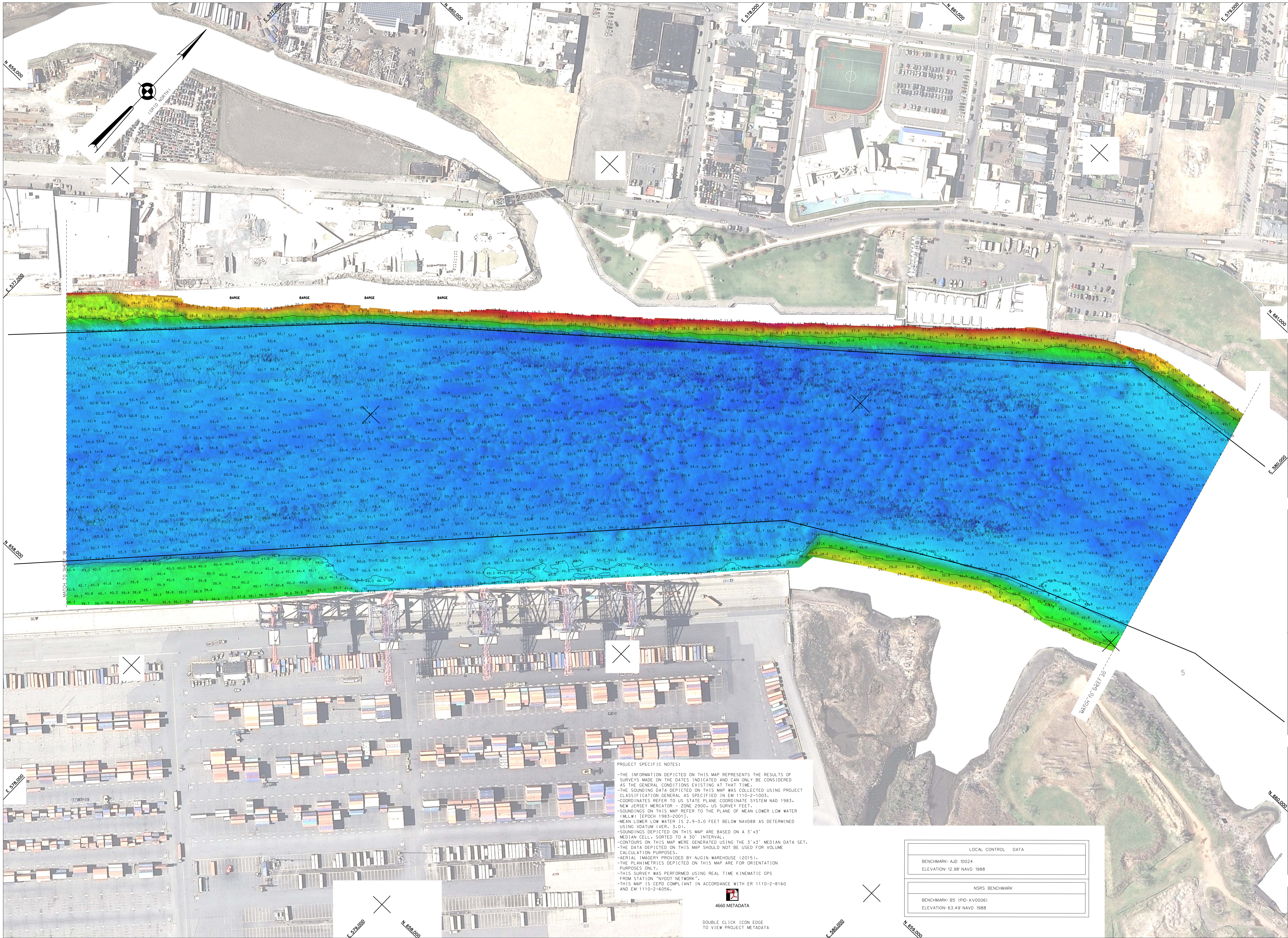
NEW YORK & NEW JERSEY CHANNELS
ARTHUR KILL

VH-118

SHEET 18 OF 19

FILE NO.: 1401
REQUEST NO.: 4660/D/N1/N





U.S. ARMY
CORPS OF ENGINEERS
NEW YORK DISTRICT

FILE NO: 1401	REQUEST NO: 4660/D/17/13
DATE: 28 FEBRUARY 2018	FILE NO: 1401
REQUEST NO: 4660/D/17/13	FILE NO: 1401
DATE: 28 FEBRUARY 2018	FILE NO: 1401

APPROVED: L. GEORGE

APPROVED: M. EDITE

APPROVED: D. CLARK

APPROVED: J. WRAZ

DATE: 28 FEBRUARY 2018

DATE: 28 FEBRUARY 2018

DATE: 28 FEBRUARY 2018

DATE: 28 FEBRUARY 2018

DEPARTMENT OF THE ARMY
CORPS OF ENGINEERS
NEW YORK DISTRICT

OPERATIONS DIVISION
SURVEY SECTION
CENNAOPS

NEW YORK & NEW JERSEY CHANNELS
ARTHUR KILL
CONDITION SURVEY

VH-119

SHEET 19 OF 22

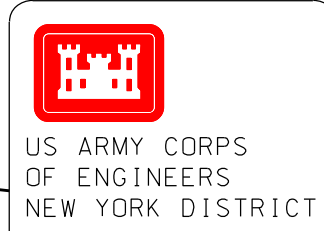
PROJECT SPECIFIC NOTES:

- THE INFORMATION DEPICTED ON THIS MAP REPRESENTS THE RESULTS OF SURVEYS MADE ON THE DATES INDICATED AND CAN ONLY BE CONSIDERED AS THE GENERAL CONDITIONS EXISTING AT THAT TIME.
- THE SOUNDING DATA DEPICTED ON THIS MAP WAS COLLECTED USING PROJECT CLASSIFICATION GENERAL, AS SPECIFIED IN EM 1110-2-1003.
- COORDINATES REFER TO US STATE PLANE COORDINATE SYSTEM NAD 83, NEW JERSEY MERCATOR - ZONE 2900, US SURVEY FEET.
- SOUNDINGS ON THIS MAP REFER TO THE PLANE OF MEAN LOWER LOW WATER (MLLW) (EPOCH 1983-2001).
- MEAN LOWER LOW WATER IS 2.9-3.0 FEET BELOW NAVD88 AS DETERMINED USING VDATUM (VER. 3.0).
- SOUNDINGS DEPICTED ON THIS MAP ARE BASED ON A 3'x3' MEDIAN CELL, SORTED TO A 30' INTERVAL.
- CONTOURS ON THIS MAP WERE GENERATED USING THE 3'x3' MEDIAN DATA SET.
- THE DATA DEPICTED ON THIS MAP SHOULD NOT BE USED FOR VOLUME CALCULATION PURPOSES.
- AERIAL IMAGERY PROVIDED BY NUCIN WAREHOUSE (2015).
- THE PLANNING DATA DEPICTED ON THIS MAP ARE FOR ORIENTATION PURPOSES ONLY.
- THIS SURVEY WAS PERFORMED USING REAL TIME KINEMATIC GPS FROM STATION "WYOT NETWORK".
- THIS MAP IS CEPO COMPLIANT IN ACCORDANCE WITH EM 1110-2-8160 AND EM 1110-2-6056.

LOCAL CONTROL DATA	
BENCHMARK: AID 10024	ELEVATION: 12.98' NAVD 1988
NSRS BENCHMARK	
BENCHMARK: B5 (PID: KV0006)	ELEVATION: 63.49' NAVD 1988

4660 METADATA

DOUBLE CLICK ICON EDGE TO VIEW PROJECT METADATA

[illegible]

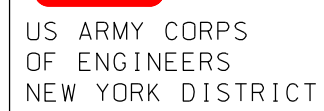
SCALE : ONE INCH = 100 FEET	DATES OF SURVEY : 11-30 JANUARY 2018 15-08-12-16 FEBRUARY 2018
FIELD BOOKS : _____ _____ _____	FILE NO. : 1392 REQUEST NO. : 4567/D/N1/N2

DEPARTMENT OF THE ARMY NEW YORK DISTRICT CORPS OF ENGINEERS NEW YORK, NEW YORK 10278	APPROVED: <u>L. GEORGE</u> <small>PLANT CHAIRMAN</small> APPROVED: <u>M. EDITE</u> <small>STYLING, INSTRUCTIONS, TRANSCRIPTION</small> APPROVED: <u>D. CLARKE</u> <small>STORY EDITOR</small> APPROVED: <u>J. BRAZ</u> <small>STORY EDITOR</small> DATE: 01 MARCH 1978
---	--

NEW YORK & NEW JERSEY CHANNELS
ARTHUR KILL
CONDITION SURVEY

VH-120

SHEET 20 OF 22

[illegible]

DATES OF SURVEY:
11.30 JANUARY 2018
1.5-8.12-16 FEBRUARY 2018

FILE NO.: 1401
REQUEST NO.: 4660/D/N1/N3

SCALE:
ONE INCH = 100 FEET

FIELD BOOKS:
1012 _____

APPROVED: L. GEORGE
FIELD CADDISGRABBER

APPROVED: M. FORTE
CIVIL ENGINEERING TECHNICIAN

APPROVED: D. CLARKE
LEAD CADDISGRABBER

APPROVED: J. MRAZ
DEPUTY CHIEF OF SUPPLY

DATE: 01 MARCH 2018

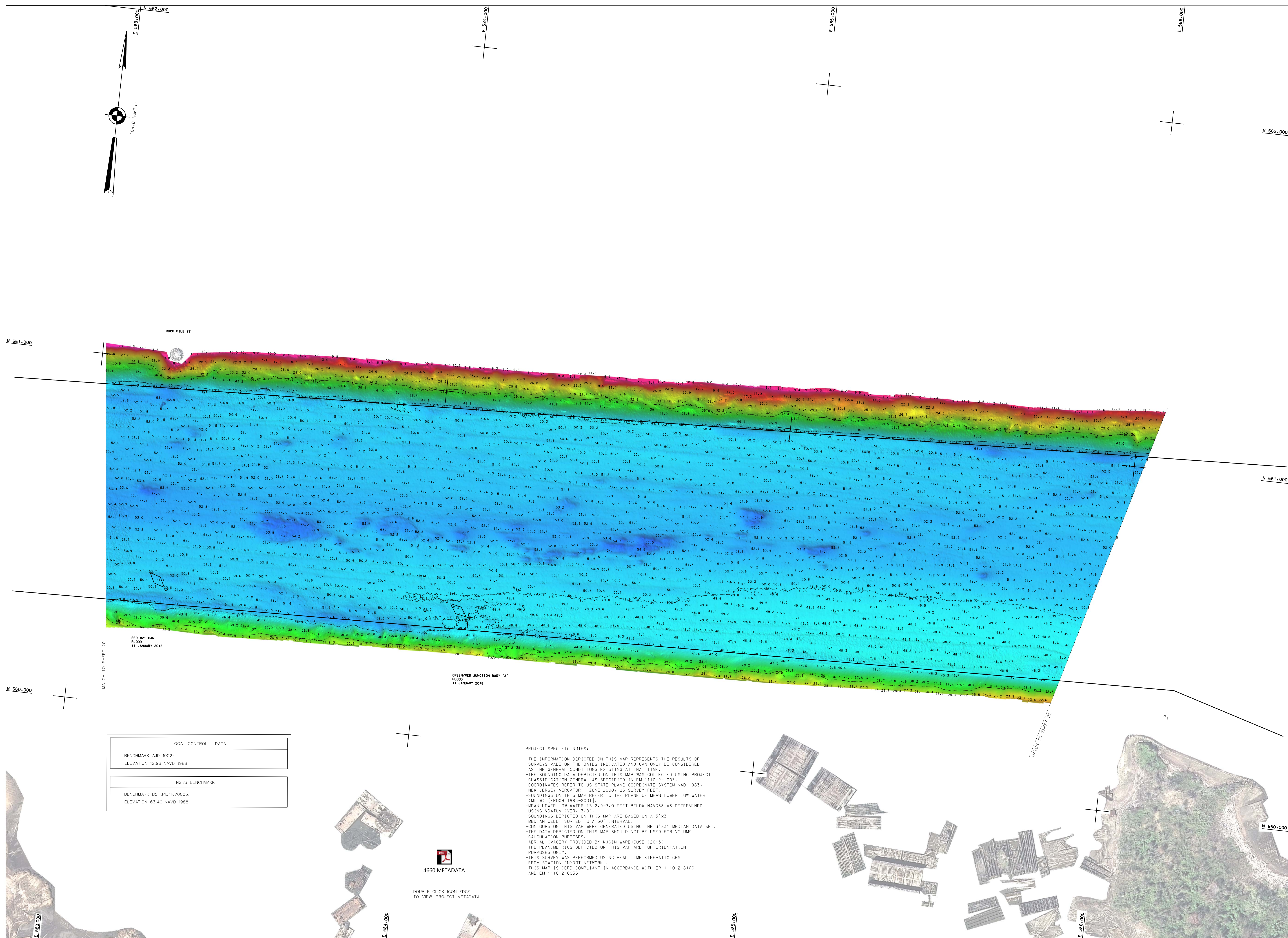
DEPARTMENT OF THE ARMY
NEW YORK DISTRICT
CORPS OF ENGINEERS
NEW YORK, NEW YORK 10278

OPERATIONS DIVISION
SURVEY SECTION
CENAN-OP-S

NEW YORK & NEW JERSEY CHANNELS
ARTHUR KILL
CONDITION SURVEY

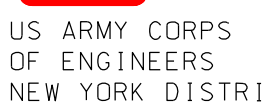
VH-121

SHEET 21 OF 22



PROJECT SPECIFIC NOTES:

- THE INFORMATION DEPICTED ON THIS MAP REPRESENTS THE RESULTS OF SURVEYS MADE ON THE DATES INDICATED AND CAN ONLY BE CONSIDERED AS THE GENERAL CONDITIONS EXISTING AT THAT TIME.
- THE SOUNDING DATA FOR THIS MAP WAS COLLECTED USING PROJECT CLASSIFICATION GENERAL AS SPECIFIED IN EM 1110-2-1003.
- COORDINATES REFER TO US STATE PLANE COORDINATE SYSTEM NAD 1983.
- THE SOUNDING DATA FOR THIS MAP WAS COLLECTED USING THE FOLLOWING SOUNDINGS ON THIS MAP REFER TO THE PLANE OF MEAN LOWER LOW WATER (MLLW) [Epoch 1983-2001].
- THE DEPTHS ON THIS MAP ARE 2, 3, 4, 5, 6, 7, 8, 9, 10 FEET BELOW NAVD83 AS DETERMINED USING DATUM VTM 01 (VER. 3.01).
- SOUNDINGS DEPICTED ON THIS MAP ARE BASED ON A 3' X 3' MEDIAN CELL.
- CONTOURS ON THIS MAP WERE GENERATED USING THE 3' X 3' MEDIAN DATA SET.
- THE DATA DEPICTED ON THIS MAP SHOULD NOT BE USED FOR VOLUME CALCULATION PURPOSES.
- AERIAL IMAGERY PROVIDED BY NUGIN WAREHOUSE (2015).
- THE PLANIMETRICS DEPICTED ON THIS MAP ARE FOR ORIENTATION PURPOSES ONLY.
- THIS SURVEY WAS PERFORMED USING REAL TIME KINEMATIC GPS FROM STATION "NVDOT NETWORK".
- THIS MAP IS KEPT CURRENT IN ACCORDANCE WITH EM 1110-2-8160 AND EM 1110-2-1005.

[illegible]

SCALE: ONE INCH = 100 FEET	DATES OF SURVEY: 11-30 JANUARY 2018 1-5-8, 12-16 FEBRUARY 2018
FIELD BOOKS: _____ _____ _____	FILE NO.: 1401 REQUEST NO.: 445607041418

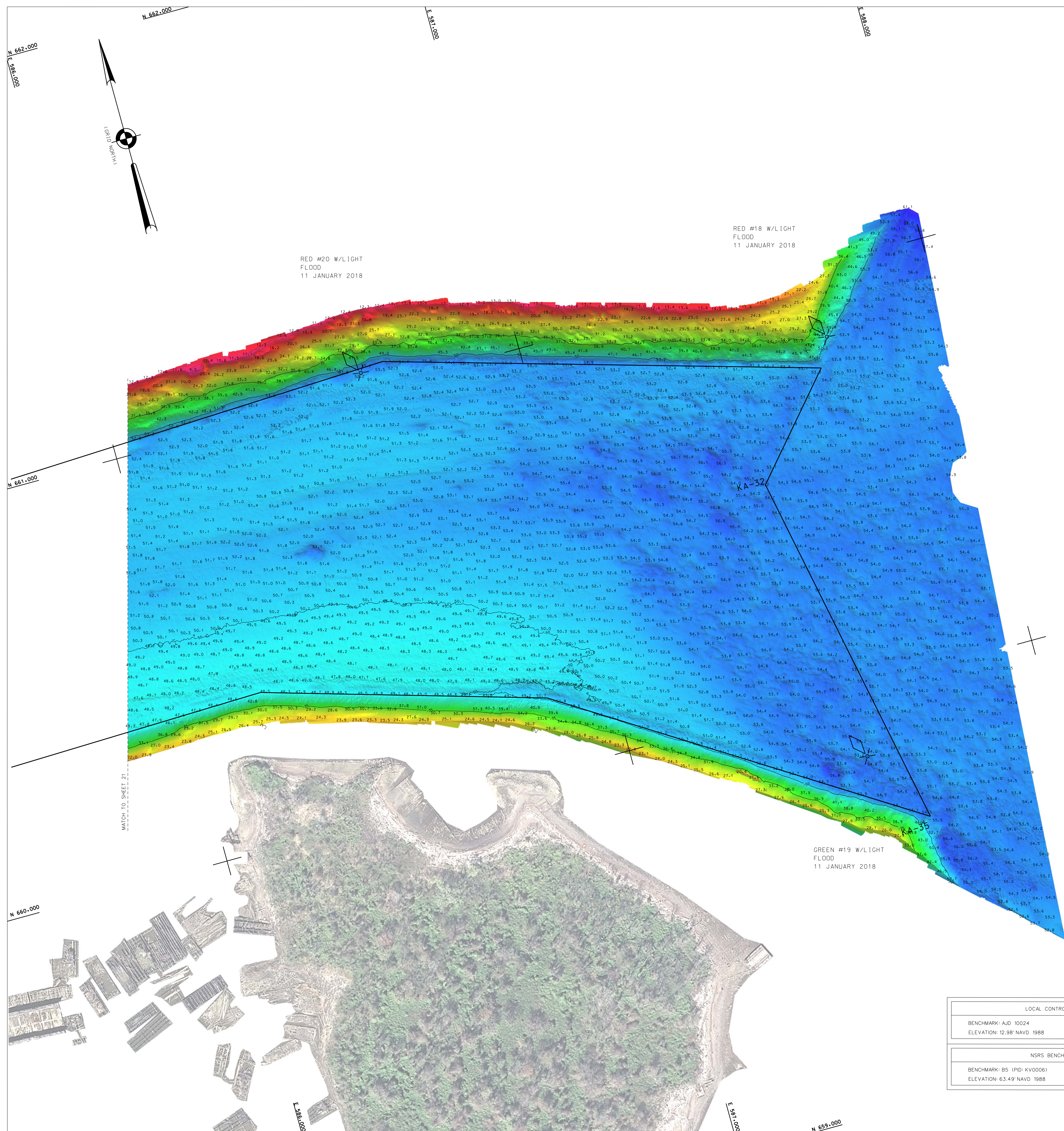
DEPARTMENT OF THE ARMY SURVEY SECTION CORPS OF ENGINEERS NEW YORK, NEW YORK 10278	APPROVED: L. GEORGE TITLE: ASSISTANT CHIEF OF BUREAU APPROVED: M. FORTE TITLE: CHIEF OF BUREAU APPROVED: D. CLARKE TITLE: CHIEF OF DIVISION APPROVED: J. MAZ TITLE: CHIEF OF BUREAU
--	--

NEW YORK & NEW JERSEY CHANNELS
ARTHUR KILL
CONDITION SURVEY

VH-122

SHEET 22 OF 2

FILE NO.: 1401
REQUEST NO.: 4660/D/



PROJECT SPECIFIC NOTES:

THE INFORMATION DEPICTED ON THIS MAP REPRESENTS THE RESULTS OF SURVEYS MADE ON THE DATES INDICATED AND CAN ONLY BE CONSIDERED AS THE GENERAL CONDITIONS EXISTING AT THAT TIME.

THE DATA ON THIS MAP WAS COLLECTED USING PROJECT CLASSIFICATION GENERAL AS SPECIFIED IN EM 1110-2-1003. COORDINATES REFER TO US STATE PLANE COORDINATE SYSTEM NAD 1983. ANY OTHER COORDINATE SYSTEMS USED TO OBTAIN THESE DATA POINTS SOUNDINGS ON THIS MAP REFER TO THE PLANE OF MEAN LOW LOW WATER (MLLW) [EPCHD 1983-2001].

VERTICAL DATUM: 1983 MEAN LOW LOW WATER (MLLW) REVEREND BAY SOUNDING DATUM (VER. 3.0).

SOUNDINGS DEPICTED ON THIS MAP ARE BASED ON A 3'x3' MEDIAN CELL, SONIC TO 100 FEET. SOUNDINGS DEPICTED ON THIS MAP WERE GENERATED USING THE 3'x3' MEDIAN DATA SET THE DATA DEPICTED ON THIS MAP SHOULD NOT BE USED FOR VOLUME CALCULATION PURPOSES.

AERIAL IMAGES PROVIDED BY NGIN WAREHOUSE (2015), THE PLANIMETRICS DEPICTED ON THIS MAP ARE FOR ORIENTATION PURPOSES ONLY.

THIS SURVEY WAS PERFORMED USING REAL TIME KINEMATIC GPS FROM STATION "NYOTJ NETWORK".

-THIS MAP IS CEPO COMPLIANT IN ACCORDANCE WITH ER 1110-2-8160 AND EM 1110-2-1003.



4660 METADATA

DOUBLE CLICK ICON EDGE
TO VIEW PROJECT METADATA

E 588.000