

US ARMY CORPS OF ENGINEERS NEW YORK DISTRICT
EQ. CM. JHS
CM. JHS

DATES OF SURVEY: 9.10.13-16.21 FEB. 2023	REQ. NO./FILE NO.: 5266/N1/N3
SCALE: ONE INCH = 100 FEET	FIELD BOOKS: 1054, 1055

APPROVED: N. VITOLD FIELD CARTOGRAPHER	APPROVED: M. FORTE ENGINEERING TECHNICIAN
APPROVED: P. BLODUP LEAD CARTOGRAPHER	APPROVED: J. MRAZ DEPUTY CHIEF OF SURVEY
DATE: 27 FEBRUARY 2023	

DEPARTMENT OF THE ARMY U.S. ARMY CORPS OF ENGINEERS NEW YORK DISTRICT NEW YORK, NEW YORK 10278	OPERATIONS DIVISION SURVEYS AND MAPPING BRANCH CCNAN-OP-SS
---	--

NEWARK BAY, HACKENSACK, & PASSAIC RIVERS NEW JERSEY MAIN AND PORT NEWARK CHANNELS PLANS AND SPECS SURVEY

VH-105
5 OF 12

NUN #8
FLOOD
14 FEBRUARY 2023

PROJECT SPECIFIC NOTES:

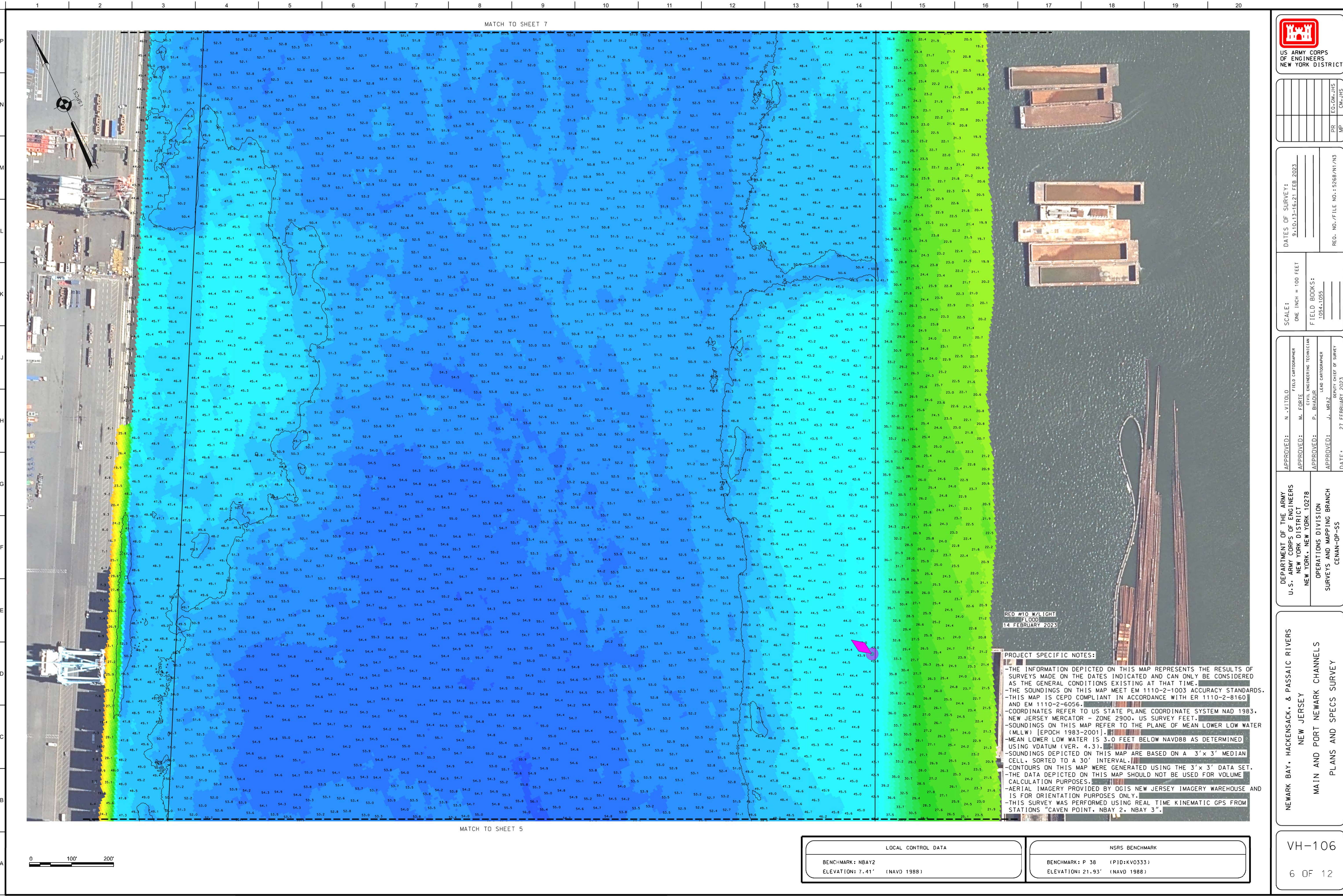
- THE INFORMATION DEPICTED ON THIS MAP REPRESENTS THE RESULTS OF SURVEYS MADE ON THE DATES INDICATED AND CAN ONLY BE CONSIDERED AS THE GENERAL CONDITIONS EXISTING AT THAT TIME.
- THE SOUNDINGS ON THIS MAP MEET EM 1110-2-1003 ACCURACY STANDARDS. -THIS MAP IS CEPD COMPLIANT IN ACCORDANCE WITH ER 1110-2-8160 AND EM 1110-2-6056.
- COORDINATES REFER TO US STATE PLANE COORDINATE SYSTEM NAD 1983, NEW JERSEY MERCATOR - ZONE 2900, US SURVEY FEET.
- SOUNDINGS ON THIS MAP REFER TO THE PLANE OF MEAN LOWER LOW WATER (MLLW) [EPOCH 1983-2001].
- MEAN LOWER LOW WATER IS 3.0 FEET BELOW NAVD88 AS DETERMINED USING VDUTM (VER. 4.3).
- SOUNDINGS DEPICTED ON THIS MAP ARE BASED ON A 3' x 3' MEDIAN CELL, SORTED TO A 30' INTERVAL.
- CONTOURS ON THIS MAP WERE GENERATED USING THE 3' x 3' DATA SET.
- THE DATA DEPICTED ON THIS MAP SHOULD NOT BE USED FOR VOLUME CALCULATION PURPOSES.
- AERIAL IMAGERY PROVIDED BY OGIS NEW JERSEY IMAGERY WAREHOUSE AND IS FOR ORIENTATION PURPOSES ONLY.
- THIS SURVEY WAS PERFORMED USING REAL TIME KINEMATIC GPS FROM STATIONS "CAVEN POINT, NBAY 2, NBAY 3".

LOCAL CONTROL DATA

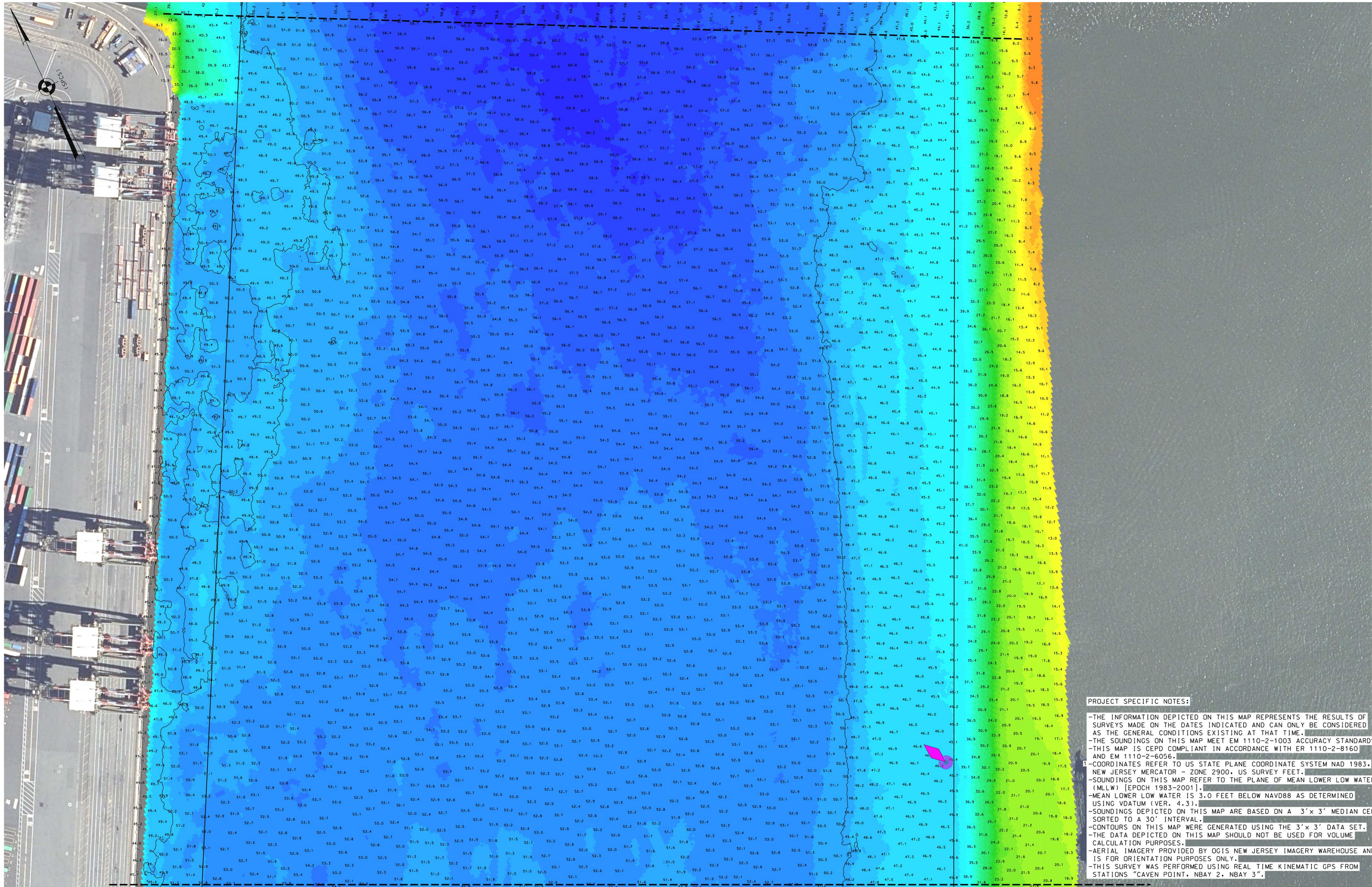
BENCHMARK: NBAY2
ELEVATION: 7.41' (NAVD 1988)

NSRS BENCHMARK

BENCHMARK: P 38 (PID:KV0333)
ELEVATION: 21.93' (NAVD 1988)



MATCH TO SHEET 8



MATCH TO SHEET 6

PROJECT SPECIFIC NOTES:

- THE INFORMATION DEPICTED ON THIS MAP REPRESENTS THE RESULTS OF SURVEYS MADE ON THE DATES INDICATED AND CAN ONLY BE CONSIDERED AS THE GENERAL CONDITIONS EXISTING AT THAT TIME.
- THE SOUNDINGS ON THIS MAP MEET EM 1110-2-1003 ACCURACY STANDARDS. THIS MAP IS CEPD COMPLIANT IN ACCORDANCE WITH ER 1110-2-8160 AND EM 1110-2-6056.
- COORDINATES REFER TO US STATE PLANE COORDINATE SYSTEM NAD 1983, NEW JERSEY MERCATOR - ZONE 2900, US SURVEY FEET.
- SOUNDINGS ON THIS MAP REFER TO THE PLANE OF MEAN LOWER LOW WATER (MLLW) [EPOCH 1983-2001].
- MEAN LOWER LOW WATER IS 3.0 FEET BELOW NAVD88 AS DETERMINED USING VDATUM (VER. 4.3).
- SOUNDINGS DEPICTED ON THIS MAP ARE BASED ON A 3'x 3' MEDIAN CELL, SORTED TO A 30' INTERVAL.
- CONTOURS ON THIS MAP WERE GENERATED USING THE 3'x 3' DATA SET.
- THE DATA DEPICTED ON THIS MAP SHOULD NOT BE USED FOR VOLUME CALCULATION PURPOSES.
- AERIAL IMAGERY PROVIDED BY OGIS NEW JERSEY IMAGERY WAREHOUSE AND IS FOR ORIENTATION PURPOSES ONLY.
- THIS SURVEY WAS PERFORMED USING REAL TIME KINEMATIC GPS FROM STATIONS "CAVEN POINT, NBAY 2, NBAY 3".

LOCAL CONTROL DATA

BENCHMARK: NBAY2
ELEVATION: 7.41' (NAVD 1988)

NSRS BENCHMARK

BENCHMARK: P 38 (PID:KV0333)
ELEVATION: 21.93' (NAVD 1988)



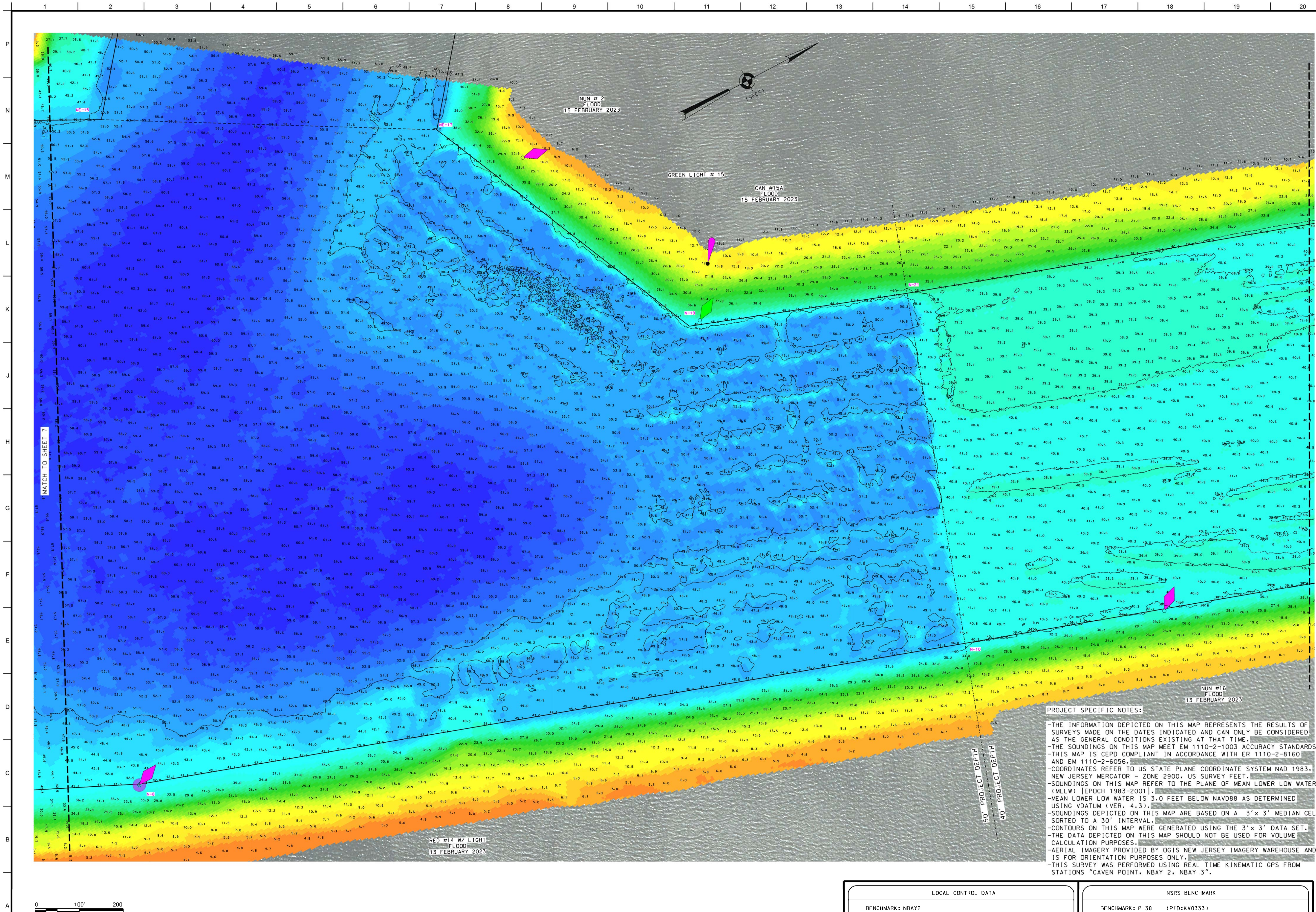
US ARMY CORPS OF ENGINEERS NEW YORK DISTRICT
EQ. CM. JHS
PR
MP

DATES OF SURVEY: 9.10.13-16.21 FEB 2023	SCALE: ONE INCH = 100 FEET
FIELD BOOKS: 1054.1055	REO. NO./FILE NO.: 5266/N1/N3

APPROVED: N. VITOLD FIELD CARTOGRAPHER	APPROVED: M. FORTE ENGINEERING TECHNICIAN
APPROVED: P. BLODUP LEAD CARTOGRAPHER	APPROVED: J. MRAZ DEPUTY CHIEF OF SURVEY
DATE: 27 FEBRUARY 2023	

DEPARTMENT OF THE ARMY U.S. ARMY CORPS OF ENGINEERS NEW YORK DISTRICT NEW YORK, NEW YORK 10278	OPERATIONS DIVISION SURVEYS AND MAPPING BRANCH CCNAN-OP-SS
---	--

NEWARK BAY, HACKENSACK, & PASSAIC RIVERS NEW JERSEY MAIN AND PORT NEWARK CHANNELS PLANS AND SPECS SURVEY



PROJECT SPECIFIC NOTES:

- THE INFORMATION DEPICTED ON THIS MAP REPRESENTS THE RESULTS OF SURVEYS MADE ON THE DATES INDICATED AND CAN ONLY BE CONSIDERED AS THE GENERAL CONDITIONS EXISTING AT THAT TIME.
- THE SOUNDINGS ON THIS MAP MEET EM 1110-2-1003 ACCURACY STANDARDS.
- THIS MAP IS CEPD COMPLIANT IN ACCORDANCE WITH ER 1110-2-8160 AND EM 1110-2-6056.
- COORDINATES REFER TO US STATE PLANE COORDINATE SYSTEM NAD 1983, NEW JERSEY MERCATOR - ZONE 2900, US SURVEY FEET.
- SOUNDINGS ON THIS MAP REFER TO THE PLANE OF MEAN LOWER LOW WATER (MLLW) [EPOCH 1983-2001].
- MEAN LOWER LOW WATER IS 3.0 FEET BELOW NAVD88 AS DETERMINED USING VDATUM (VER. 4.3).
- SOUNDINGS DEPICTED ON THIS MAP ARE BASED ON A 3' x 3' MEDIAN CELL, SORTED TO A 30' INTERVAL.
- CONTOURS ON THIS MAP WERE GENERATED USING THE 3' x 3' DATA SET.
- THE DATA DEPICTED ON THIS MAP SHOULD NOT BE USED FOR VOLUME CALCULATION PURPOSES.
- AERIAL IMAGERY PROVIDED BY OGIS NEW JERSEY IMAGERY WAREHOUSE AND IS FOR ORIENTATION PURPOSES ONLY.
- THIS SURVEY WAS PERFORMED USING REAL TIME KINEMATIC GPS FROM STATIONS "CAVEN POINT, NBAY 2, NBAY 3".

LOCAL CONTROL DATA		NSRS BENCHMARK	
BENCHMARK: NBAY2		BENCHMARK: P 38 (PID:KV0333)	
ELEVATION: 7.41' (NAVD 1988)		ELEVATION: 21.93' (NAVD 1988)	

US ARMY CORPS OF ENGINEERS
NEW YORK DISTRICT

DATES OF SURVEY:
9-10-13-16-21 FEB 2023

SCALE:
ONE INCH = 100 FEET

FIELD BOOKS:
1054,1055

APPROVED: N. VITOLD
M. FORTE
P. BLOQUIER
J. MRZ

DEPT. OF THE ARMY
U.S. ARMY CORPS OF ENGINEERS
NEW YORK DISTRICT
NEW YORK, NEW YORK 10278

OPERATIONS DIVISION
SURVEYS AND MAPPING BRANCH
CCNAN-OP-SS

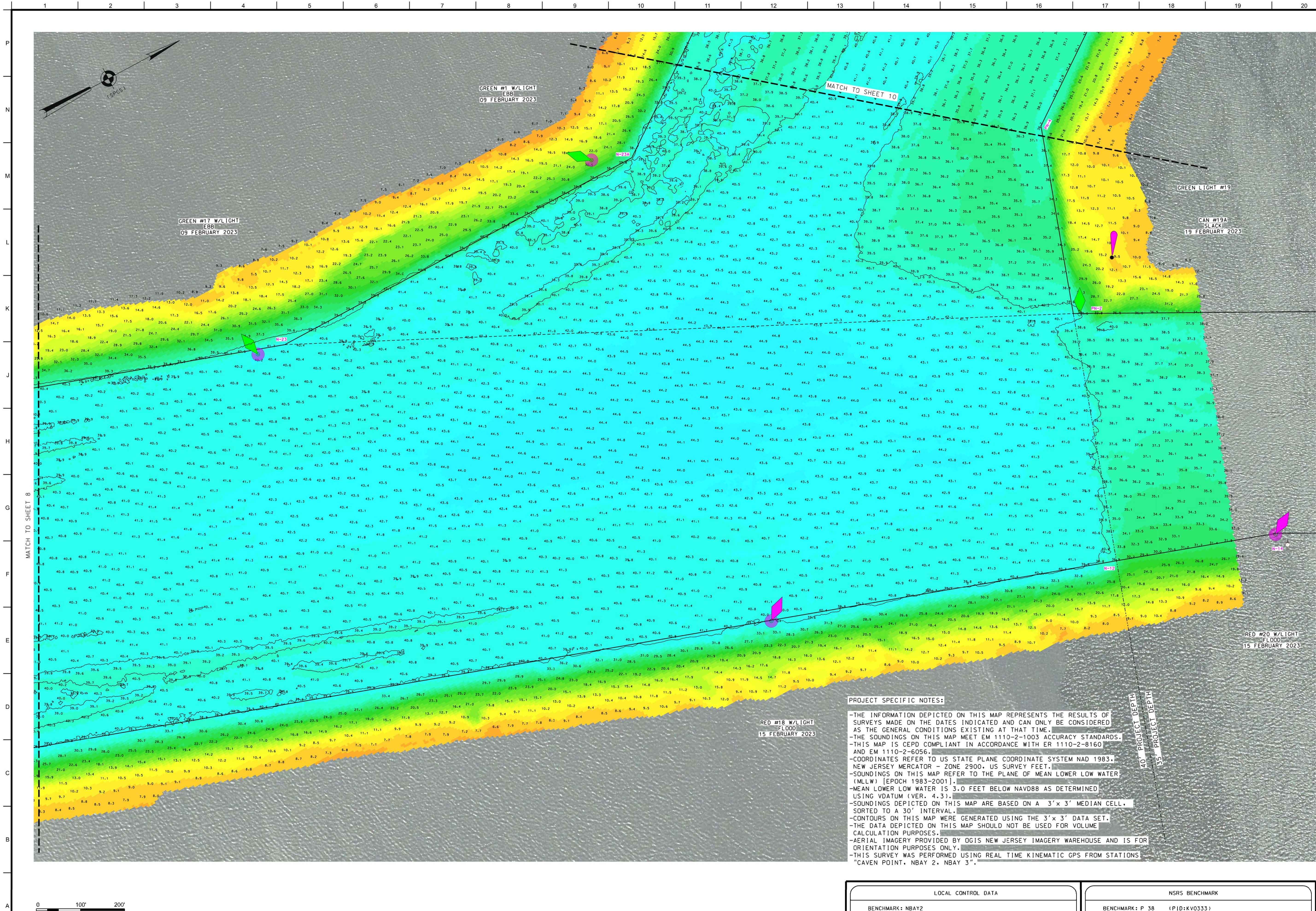
REQ. NO./FILE NO.: 15266/N1/N3


27 FEBRUARY 2023

NEWARK BAY, HACKENSACK, & PASSAIC RIVERS
NEW JERSEY
MAIN AND PORT NEWARK CHANNELS
PLANS AND SPECS SURVEY

VH-108

8 OF 12





US ARMY CORPS OF ENGINEERS
NEW YORK DISTRICT

DATES OF SURVEY:
9-10-13-15-21 FEB 2023

SCALE:
ONE INCH = 100 FEET

APPROVED:
N. VITOLD
FIELD CARTOGRAPHER

APPROVED:
M. FORTE
ENGINEERING TECHNICIAN

APPROVED:
P. BLODUP
LEAD CARTOGRAPHER

APPROVED:
J. MRZ
DEPUTY CHIEF OF SURVEY

DATE:
27 FEBRUARY 2023

REQ. NO./FILE NO.: 5266/N1/N3

PR
CM-JHS
MP

DEPARTMENT OF THE ARMY
U.S. ARMY CORPS OF ENGINEERS
NEW YORK DISTRICT
NEW YORK, NEW YORK 10278

OPERATIONS DIVISION
SURVEYS AND MAPPING BRANCH
CCANN-OP-SS

NEWARK BAY, HACKENSACK, & PASSAIC RIVERS
NEW JERSEY
MAIN AND PORT NEWARK CHANNELS
PLANS AND SPECS SURVEY

VH-109
9 OF 12

PROJECT SPECIFIC NOTES:

- THE INFORMATION DEPICTED ON THIS MAP REPRESENTS THE RESULTS OF SURVEYS MADE ON THE DATES INDICATED AND CAN ONLY BE CONSIDERED AS THE GENERAL CONDITIONS EXISTING AT THAT TIME.
- THE SOUNDINGS ON THIS MAP MEET EM 1110-2-1003 ACCURACY STANDARDS.
- THIS MAP IS CEPD COMPLIANT IN ACCORDANCE WITH ER 1110-2-8160 AND EM 1110-2-6056.
- COORDINATES REFER TO US STATE PLANE COORDINATE SYSTEM NAD 1983, NEW JERSEY MERCATOR - ZONE 2900, US SURVEY FEET.
- SOUNDINGS ON THIS MAP REFER TO THE PLANE OF MEAN LOWER LOW WATER (MLLW) [EPOCH 1983-2001].
- MEAN LOWER LOW WATER IS 3.0 FEET BELOW NAVD88 AS DETERMINED USING VDATUM (VER. 4.3).
- SOUNDINGS DEPICTED ON THIS MAP ARE BASED ON A 3'x 3' MEDIAN CELL, SORTED TO A 30" INTERVAL.
- CONTOURS ON THIS MAP WERE GENERATED USING THE 3'x 3' DATA SET.
- THE DATA DEPICTED ON THIS MAP SHOULD NOT BE USED FOR VOLUME CALCULATION PURPOSES.
- AERIAL IMAGERY PROVIDED BY DCIS NEW JERSEY IMAGERY WAREHOUSE AND IS FOR ORIENTATION PURPOSES ONLY.
- THIS SURVEY WAS PERFORMED USING REAL TIME KINEMATIC GPS FROM STATIONS "CAVEN POINT, NBAY 2, NBAY 3".

LOCAL CONTROL DATA		NSRS BENCHMARK	
BENCHMARK: NBAY2		BENCHMARK: P 38	(PID:KVO333)
ELEVATION: 7.41'	(NAVD 1988)	ELEVATION: 21.93'	(NAVD 1988)

