

Nassau County Back Bays, NY Coastal Storm Risk Management Feasibility Study

National Environmental Policy Act (NEPA) of 1969

The NEPA Process



- NEPA requires Federal agency decision makers to consider how proposed actions could impact the human environment
- The NEPA process includes both decision making and public involvement aspects
- During the NEPA process, the USACE, NYSDEC, and Nassau County will determine whether or not the project's environmental impacts are significant
- The NEPA process must be completed before any decision is made by a Federal agency

Environmental Impact Analysis

Potential impacts to important environmental and human resources will be investigated during the NEPA process, and be documented in the Environmental Impact Statement (EIS). These resources include but are not limited to:

- Aesthetics
- Air Quality
- Climate Change
- Critical Infrastructure
- Cultural Resources
- Economics
- Floodplains
- Hazardous, Toxic & Radioactive Waste
- Hydrology
- Navigation
- Noise
- Real Estate
- Recreation
- Threatened & Endangered Species
- Socioeconomics
- Water Quality
- Wetlands



Department of Environmental Conservation



Nassau County Back Bays, NY Coastal Storm Risk Management Feasibility Study

NEPA Scoping & Public Involvement

The scoping process is an opportunity for the public to identify topics that will be investigated during the study. Your input will help identify:

- Topics to be analyzed
- Potential alternatives to be considered
- Potential mitigation measures
- People or organizations who can provide valuable input
- Data gaps and information needs

The scoping period began with publication of a Notice of Intent (NOI) in the Federal Register (2017-08095) on April 21, 2017 stating USACE's intent to complete an Environmental Impact Statement (EIS)

Opportunities for Input

- Submit scoping comments
- Comment on the draft EIS – est. release in 2019
- Share your ideas!
 - Public meetings
 - Comment cards
 - Email or mail the study team

How can I get involved?

Your input is important! Public involvement is a fundamental part of the study's success.

- Talk with study team members today
- Fill out a comment card
- Join the mailing list
- Attend future meetings
- Email the study team at NassauBackBays@usace.army.mil

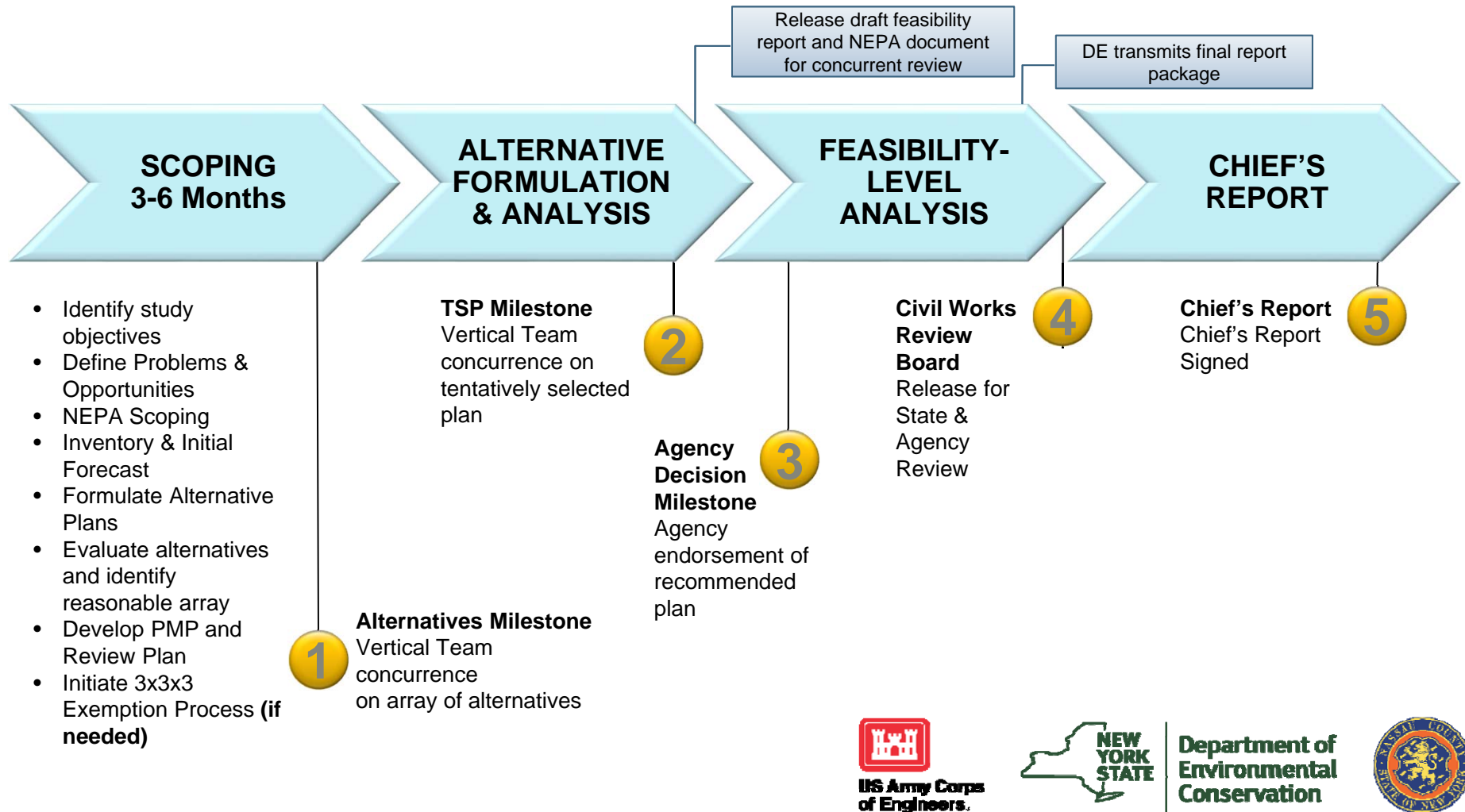


Department of
Environmental
Conservation

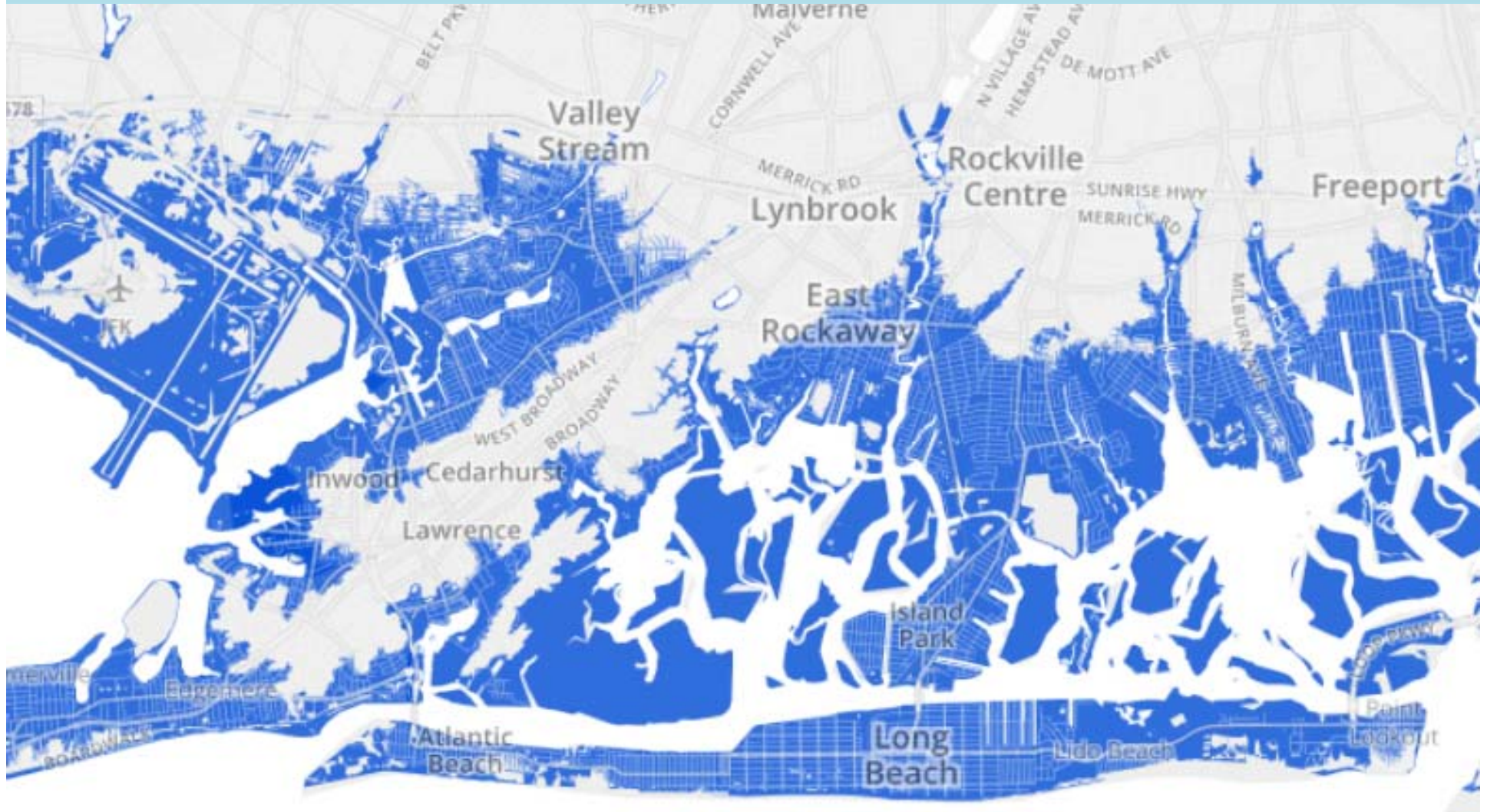


Nassau County Back Bays, NY Coastal Storm Risk Management Feasibility Study ⁴

USACE Feasibility Study Process



Nassau County Back Bays, NY Coastal Storm Risk Management Feasibility Study



■ Hurricane Sandy surge extent

Map based on Nov. 2012 interim data from the FEMA Modeling Task Force Hurricane Sandy Impact Analysis. <http://fema.maps.arcgis.com>; <https://project.wnyc.org/flooding-sandy-new>

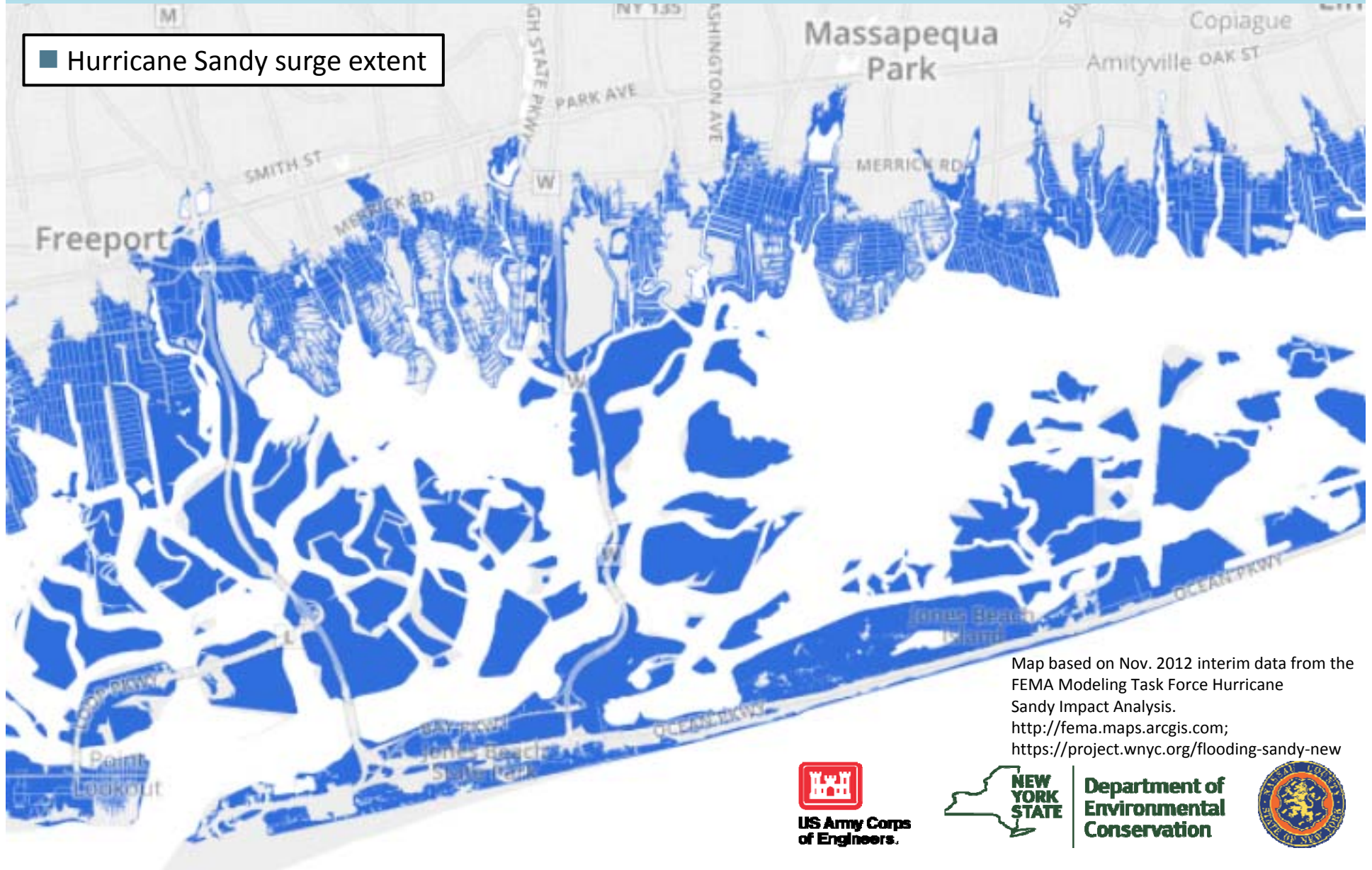


Department of
Environmental
Conservation



Nassau County Back Bays, NY Coastal Storm Risk Management Feasibility Study

■ Hurricane Sandy surge extent



Map based on Nov. 2012 interim data from the FEMA Modeling Task Force Hurricane Sandy Impact Analysis.
<http://fema.maps.arcgis.com>;
<https://project.wnyc.org/flooding-sandy-new>

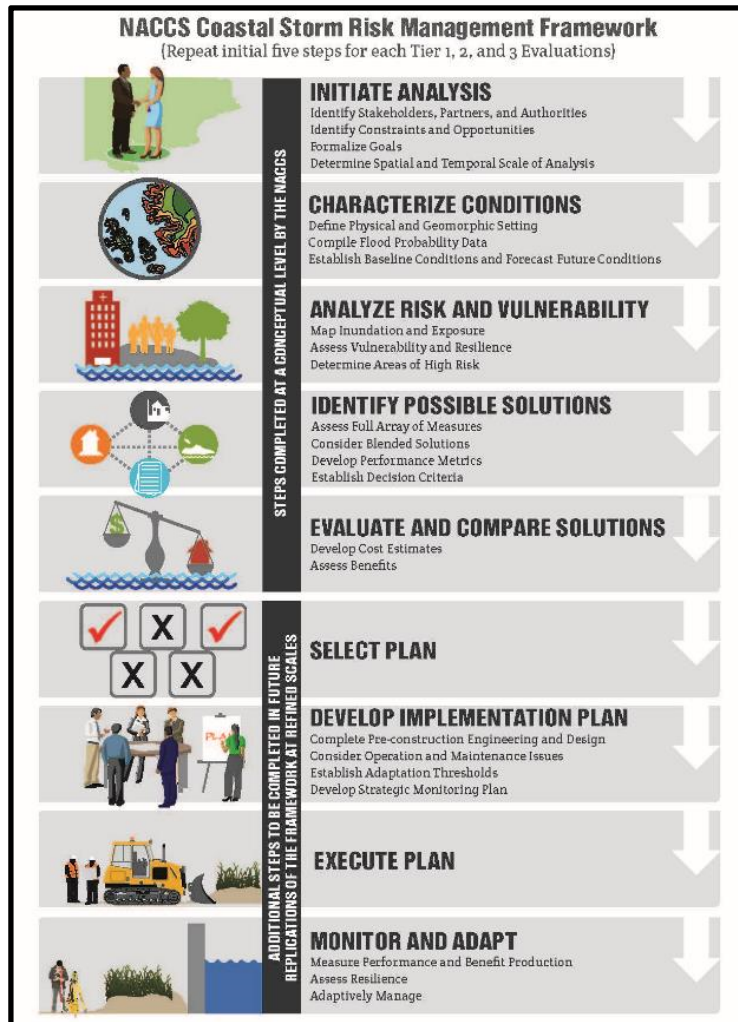


Department of Environmental Conservation



Nassau County Back Bays, NY Coastal Storm Risk Management Feasibility Study

North Atlantic Coast Comprehensive Study (NACCS)



- Outlined a framework to select, design, and implement coastal storm risk management projects
- Recommended studies to investigate ways to reduce storm risk in high risk coastal areas impacted by Hurricane Sandy
- Produced technical tools such as engineering models
- Identified potential measures that may reduce flood risk
 - A combination of measures is likely appropriate to reduce risk in Nassau County

Measures that are being considered

Measures are structures and actions that can meet the study's objective to reduce flood risk. Measures that are being investigated include but are not limited to:

- | | | |
|-----------------------------------|-------------------------|---------------------|
| • Acquisition | • Elevations | • Levees |
| • Beach nourishment | • Evacuation planning | • Living shorelines |
| • Building retrofit | • Flood warning systems | • Surge barriers |
| • Bulkheads | • Floodplain regulation | • Reefs |
| • Deployable/temporary floodwalls | • Floodproofing | • Relocations |
| • Drainage improvements | • Floodwalls | • Seawalls |
| | • Land use management | • Wetlands |



Department of
Environmental
Conservation

