



Department of the Army  
New York District Corps of Engineers  
Jacob K. Javits Federal Building  
26 Federal Plaza  
New York, NY 10278-0090

## Week of October 7 – October 13, 2013

The following pages display the results from the USACE-NYD real-time website for the week of Monday, October 7, through Sunday, October 13, 2013.

There were eight blasts this week in the S-AK-3 project area.

We recorded vibrations in the S-AK-3 project area. The maximum vibration recorded was 0.25 in/s recorded at Elizabeth Marina on October 9. Table 1 summarizes the blasts this week.

Page 2 summarizes dredge locations for this week. The map shows the week's last dredge locations by colored symbols, connected by colored lines to the week's previous locations marked by gray symbols. Dredge Apache and Dredge 55 operated in S-AK-3.

The remaining odd pages display the home page showing the maximum vibration measured in all of the stations for most recent event for each day:

October 7  
October 8  
October 9  
October 10  
October 11  
October 12  
October 13

The even pages show the maximum vibration observed at each station along easting for each event.

The results for this week show the measurements at the three active stations: New York Container Terminal (NYCT), Elizabethport, and Elizabeth Marina. The station locations are on each page.

Ambient ground vibrations at NYCT were all below 0.0369 in/s. Ambient vibrations at Elizabethport were all below 0.0381 in/s. Ambient vibrations at Elizabeth Marina were all below 0.25 in/s. All blast vibration measurements are below the contract vibration limits for this site.

**Table 1.** S-AK-3 Blast Summary for this week

| <b>Blast</b> | <b>Date &amp; Time<br/>EST/EDT of blast</b> | <b>Distance from blast<br/>to e4s stations (feet)</b> | <b>e4s Max. vibration<br/>(in/s)</b> |
|--------------|---|---|--------------------------------------|
| AK-071       | 2013-10-07 15:02                            | 0,520 - 1,750   | 0.221                                |
| AK-072       | 2013-10-08 13:44                            | 0,540 - 1,870   | 0.141                                |
| AK-073       | 2013-10-09 12:30                            | 0,660 - 2,360   | 0.25                                 |
| AK-074       | 2013-10-10 09:05                            | 0,810 - 2,480   | 0.161                                |
| AK-075       | 2013-10-11 09:05                            | 0,960 - 2,590   | 0.107                                |
| AK-076       | 2013-10-11 15:29                            | 0,640 - 2,390   | 0.135                                |
| AK-077       | 2013-10-12 10:52                            | 1,130 - 2,720   | 0.0831                               |
| AK-078       | 2013-10-12 15:43                            | 0,640 - 2,410   | 0.147                                |



## Dredge Position Summary

This page summarizes dredge positions for the week. The Arthur Kill contract area is mapped with a top-of-rock map. The navigation grid is superimposed. The map shows dredge locations by colored symbols, connected by colored lines to the week's past locations marked by gray symbols. The map resets beginning the Monday of each week.

Mousing over a dredge location produces a pop-up text box giving dredge name, date of location, and easting and northing coordinates of the location in the NAD83 New Jersey State Plane coordinate system.

*Click on a station for station information.*



[Today's Dredge Position](#)

[Latest Week's  
Dredge Position Summary](#)

[Project  
History List](#)

The table below lists the date, name, easting, northing, and notes for the week's dredge positions. The position is the last reported dredge position of the day.

Dredge Location Table

| Date           | Dredge Name      | Easting | Northing | Notes |
|----------------|------------------|---------|----------|-------|
| 2013-10-13 Sun | Dredge 55        | 588835  | 658057   |       |
| 2013-10-13 Sun | Drillboat Apache | 577925  | 659292   |       |
| 2013-10-12 Sat | Dredge 55        | 588863  | 657985   |       |
| 2013-10-12 Sat | Drillboat Apache | 578230  | 659329   |       |
| 2013-10-11 Fri | Dredge 55        | 588863  | 657985   |       |
| 2013-10-10 Thu | Dredge 55        | 588836  | 657912   |       |
| 2013-10-10 Thu | Drillboat Apache | 578423  | 659548   |       |
| 2013-10-09 Wed | Drillboat Apache | 578562  | 659658   |       |
| 2013-10-08 Tue | Drillboat Apache | 579033  | 659806   |       |
| 2013-10-07 Mon | Drillboat Apache | 579172  | 659879   |       |



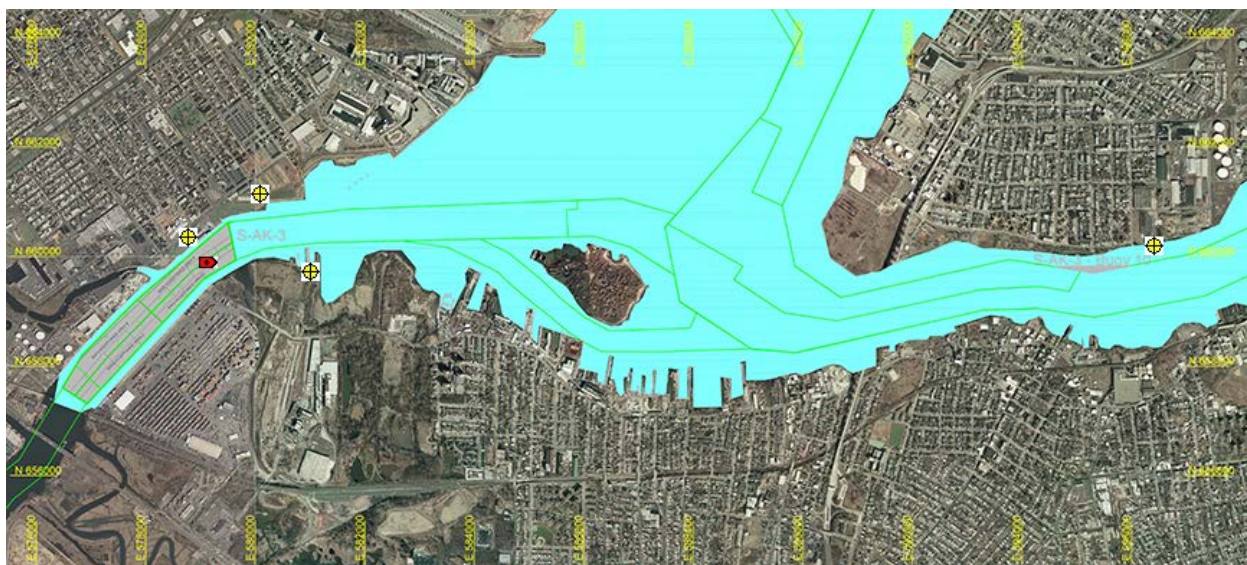
## Arthur Kill Blast Vibration Summary

This site summarizes the measured ground vibrations in northwest Staten Island, from rock blasting in the Arthur Kill and other possible sources. The site is updated daily. The data are intended for the sole use of the US Army Corps of Engineers - New York District, for managing and monitoring the performance of NYNJ Harbor Deepening Project Contract in Arthur Kill starting 25 July 2011.

This page represents the most recent observations.

The Arthur Kill contract area is mapped below in light gray. The navigation grid is superimposed. Today's dredge locations are marked by colored symbols, connected by colored lines to this week's past locations marked by gray symbols. The drilling and blasting barge is marked in red. The easting and northing map coordinates in the New Jersey State Plane coordinate system are in yellow. The locations of active seismograph stations are marked by yellow station symbols. (e4sciences stations are circles. CDB stations are triangles.) Selecting a station activates its station page.

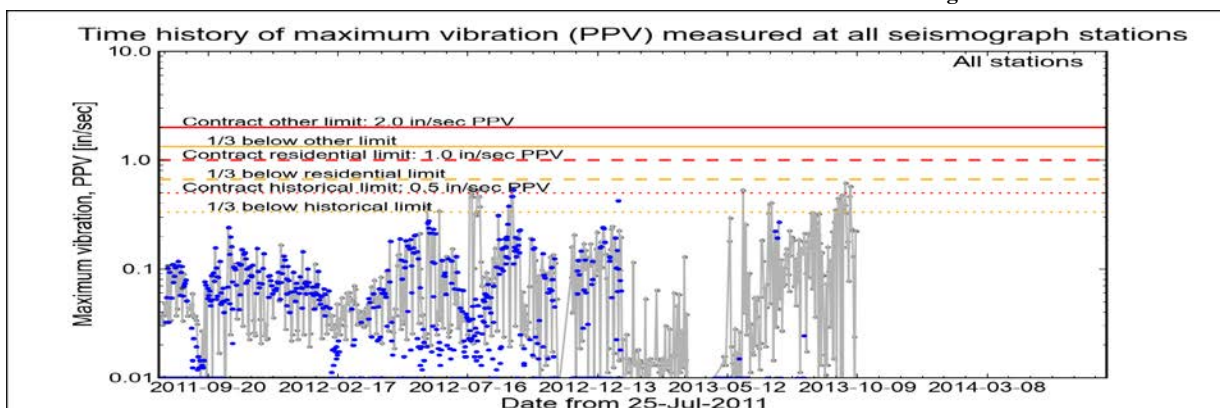
*Click station for station information or click channel for event summary.*



### Latest Event Summary

The graph below is a plot of the maximum vibration recorded by any and all of the numerous seismograph stations during the current observation event (ambient or blast). The horizontal axis gives the date from the start of the project on 25 July 2011. The vertical axis gives the maximum vibration in peak particle velocity (PPV) in units of inches per second (in/sec). The red curves show the project's contract limits; the orange curves show one-third (1/3) below these contract limits. (The light gray curve is ambient-vibration level. The blue dots are blast-vibration levels. The dark gray dots are predicted blast-vibration levels.)

Date and time of last reading: Mon 07-Oct-2013 18:47:33



(Click on graph or [here](#) for larger view)

The table below lists the date, time, level, and station of the maximum-vibration recording for each and every event. Selecting an event activates its event page.

| Blast ID                | Date                            | Time     | Max PPV<br>(in / second) | Max PPV<br>Station               |
|-------------------------|---------------------------------|----------|--------------------------|----------------------------------|
| <a href="#">Ambient</a> | <a href="#">Mon 07-Oct-2013</a> | 18:47:33 | 0.2210                   | <a href="#">Elizabeth Marina</a> |
| <a href="#">Ambient</a> | <a href="#">Sun 06-Oct-2013</a> | 12:52:46 | 0.0050                   | <a href="#">NYCT</a>             |
| <a href="#">Ambient</a> | <a href="#">Sat 05-Oct-2013</a> | 16:32:34 | 0.0237                   | <a href="#">Elizabeth Marina</a> |
| <a href="#">Ambient</a> | <a href="#">Fri 04-Oct-2013</a> | 17:02:33 | 0.1300                   | <a href="#">Elizabeth Marina</a> |
| <a href="#">Ambient</a> | <a href="#">Thu 03-Oct-2013</a> | 16:47:33 | 0.2250                   | <a href="#">Elizabeth Marina</a> |
| <a href="#">Ambient</a> | <a href="#">Wed 02-Oct-2013</a> | 20:47:34 | 0.2340                   | <a href="#">Elizabeth Marina</a> |



## Arthur Kill Blasting Event Summary

This page summarizes measurements of ground vibrations for the selected event. This page displays the maximum vibration recorded at each and every seismograph station during this event.

The Arthur Kill contract area is mapped below with a top-of-rock map. Today's dredge locations are marked by colored symbols, connected by colored lines to this week's past locations marked by gray symbols. The drilling and blasting barge location is marked in red. The easting and northing map coordinates in the New Jersey State Plane coordinate system are in yellow. The locations of active seismograph stations are marked by yellow station symbols. (*e4sciences stations are circles. CDB stations are triangles.*) Selecting a station activates its station page.

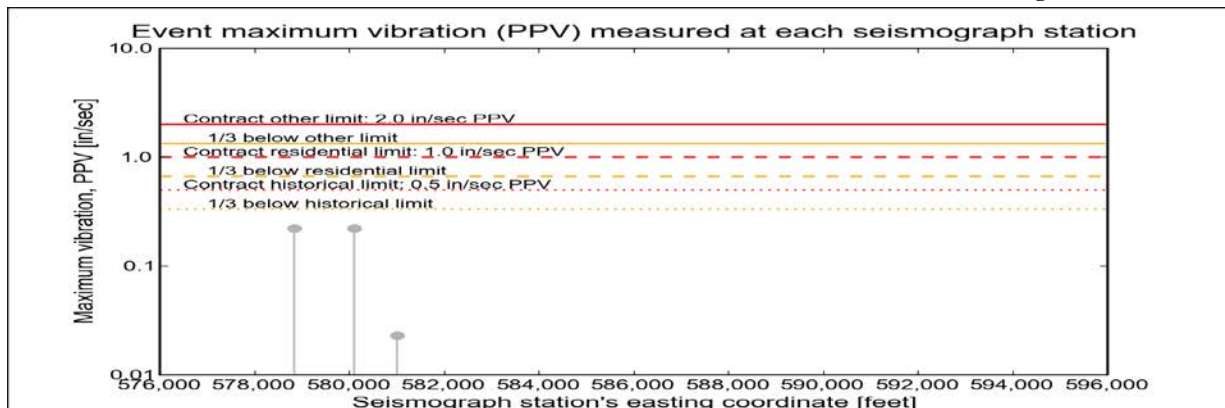
*Click station for more information about the station.*



### Selected Event Summary

The graph below plots the maximum vibration during the selected event period (blast or ambient) recorded at each and every seismograph station along the easting positions. The vertical axis gives the maximum vibration in peak particle velocity (PPV) in units of inches per second (in/sec). If the maximum vibration level at a station is below 0.01 in/sec, the marker is a v-shaped triangle at 0.01 in/sec. (*Light-gray stems indicate ambient-vibration level. Black stems indicate blast-vibration level. Dark-gray stems indicate predicted blast-vibration level.*)

Date of reading: Mon 07-Oct-2013



(Click on graph or [here](#) for larger view)

The table below lists the date, time, and level of the maximum-vibration recording at each station for the selected event.

| Station                                   | Date            | Time     | Max PPV<br>(in / second) | Vibration Type |
|---|-----------------|----------|--------------------------|----------------|
| <a href="#">Elizabeth Marina - e4s010</a> | Mon 07-Oct-2013 | 18:47:33 | 0.221                    | Ambient        |
| <a href="#">Elizabeth Port - e4s009</a>   | Mon 07-Oct-2013 | 18:47:33 | 0.221                    | Ambient        |
| <a href="#">NYCT - e4s008</a>             | Mon 07-Oct-2013 | 18:53:48 | 0.0231                   | Ambient        |



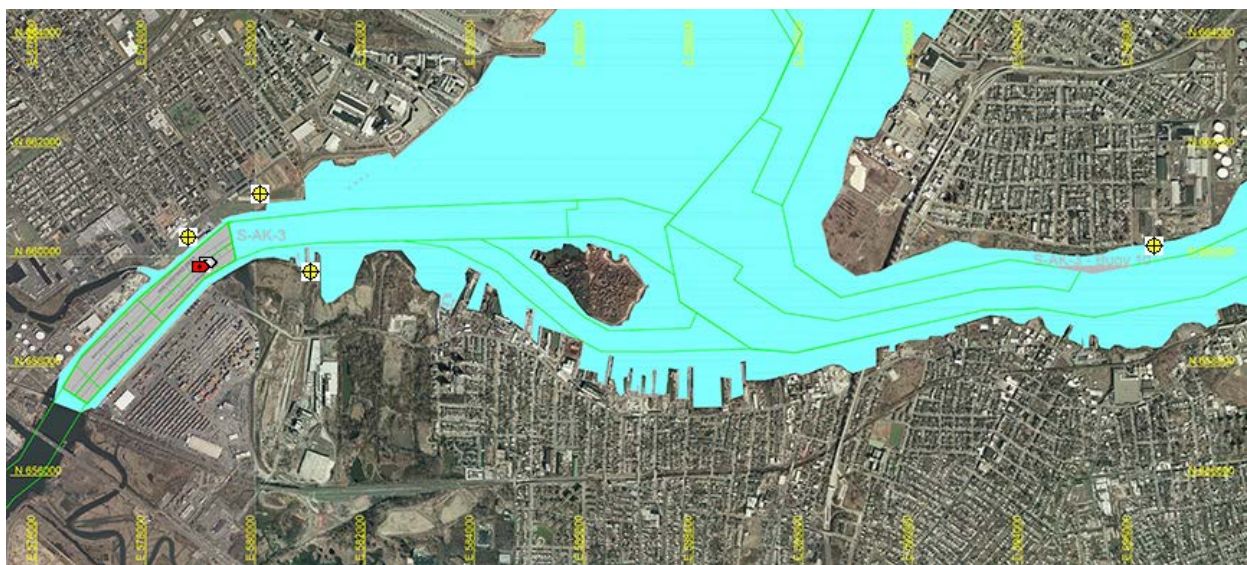
## Arthur Kill Blast Vibration Summary

This site summarizes the measured ground vibrations in northwest Staten Island, from rock blasting in the Arthur Kill and other possible sources. The site is updated daily. The data are intended for the sole use of the US Army Corps of Engineers - New York District, for managing and monitoring the performance of NYNJ Harbor Deepening Project Contract in Arthur Kill starting 25 July 2011.

This page represents the most recent observations.

The Arthur Kill contract area is mapped below in light gray. The navigation grid is superimposed. Today's dredge locations are marked by colored symbols, connected by colored lines to this week's past locations marked by gray symbols. The drilling and blasting barge is marked in red. The easting and northing map coordinates in the New Jersey State Plane coordinate system are in yellow. The locations of active seismograph stations are marked by yellow station symbols. (e4sciences stations are circles. CDB stations are triangles.) Selecting a station activates its station page.

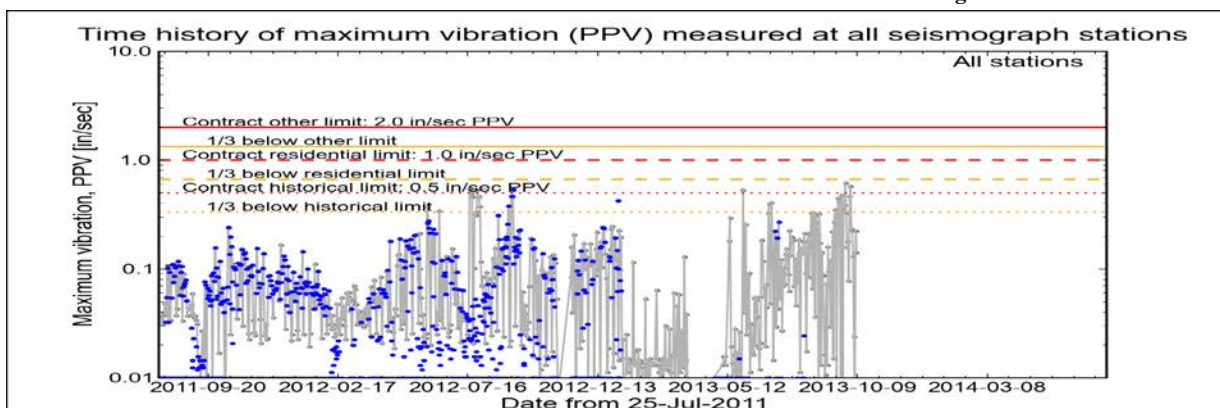
*Click station for station information or click channel for event summary.*



### Latest Event Summary

The graph below is a plot of the maximum vibration recorded by any and all of the numerous seismograph stations during the current observation event (ambient or blast). The horizontal axis gives the date from the start of the project on 25 July 2011. The vertical axis gives the maximum vibration in peak particle velocity (PPV) in units of inches per second (in/sec). The red curves show the project's contract limits; the orange curves show one-third (1/3) below these contract limits. (The light gray curve is ambient-vibration level. The blue dots are blast-vibration levels. The dark gray dots are predicted blast-vibration levels.)

**Date and time of last reading:** Tue 08-Oct-2013 17:32:36



(Click on graph or [here](#) for larger view)

The table below lists the date, time, level, and station of the maximum-vibration recording for each and every event. Selecting an event activates its event page.

| Blast ID | Date            | Time     | Max PPV<br>(in / second) | Max PPV<br>Station |
|----------|-----------------|----------|--------------------------|--------------------|
| Ambient  | Tue 08-Oct-2013 | 17:32:36 | 0.1410                   | Elizabeth Marina   |
| Ambient  | Mon 07-Oct-2013 | 18:47:33 | 0.2210                   | Elizabeth Marina   |
| Ambient  | Sun 06-Oct-2013 | 12:52:46 | 0.0050                   | NYCT               |
| Ambient  | Sat 05-Oct-2013 | 16:32:34 | 0.0237                   | Elizabeth Marina   |
| Ambient  | Fri 04-Oct-2013 | 17:02:33 | 0.1300                   | Elizabeth Marina   |
| Ambient  | Thu 03-Oct-2013 | 16:47:33 | 0.2250                   | Elizabeth Marina   |



## Arthur Kill Blasting Event Summary

This page summarizes measurements of ground vibrations for the selected event. This page displays the maximum vibration recorded at each and every seismograph station during this event.

The Arthur Kill contract area is mapped below with a top-of-rock map. Today's dredge locations are marked by colored symbols, connected by colored lines to this week's past locations marked by gray symbols. The drilling and blasting barge location is marked in red. The easting and northing map coordinates in the New Jersey State Plane coordinate system are in yellow. The locations of active seismograph stations are marked by yellow station symbols. (*e4sciences stations are circles. CDB stations are triangles.*) Selecting a station activates its station page.

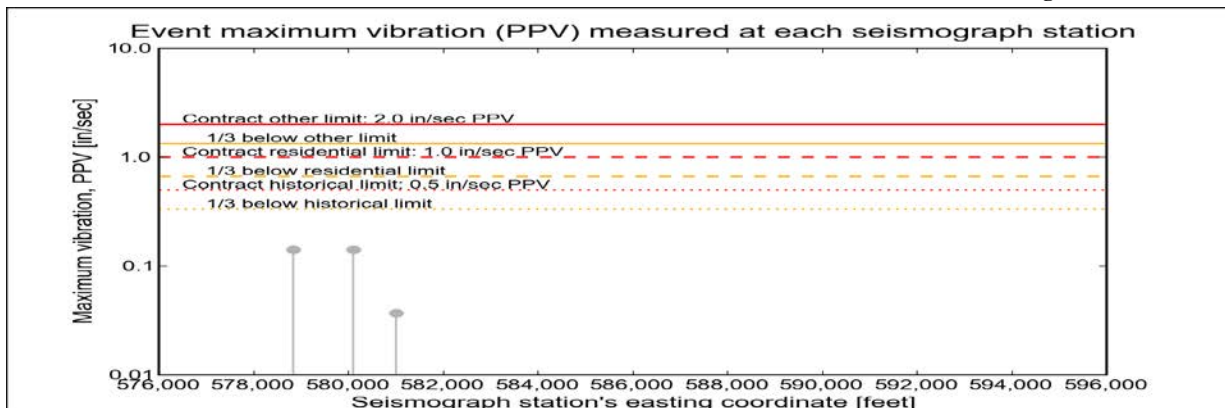
*Click station for more information about the station.*



### Selected Event Summary

The graph below plots the maximum vibration during the selected event period (blast or ambient) recorded at each and every seismograph station along the easting positions. The vertical axis gives the maximum vibration in peak particle velocity (PPV) in units of inches per second (in/sec). If the maximum vibration level at a station is below 0.01 in/sec, the marker is a v-shaped triangle at 0.01 in/sec. (*Light-gray stems indicate ambient-vibration level. Black stems indicate blast-vibration level. Dark-gray stems indicate predicted blast-vibration level.*)

Date of reading: Tue 08-Oct-2013



(Click on graph or [here](#) for larger view)

The table below lists the date, time, and level of the maximum-vibration recording at each station for the selected event.

| Station                                   | Date            | Time     | Max PPV<br>(in / second) | Vibration Type          |
|---|-----------------|----------|--------------------------|-------------------------|
| <a href="#">Elizabeth Marina - e4s010</a> | Tue 08-Oct-2013 | 17:32:36 | 0.141                    | <a href="#">Ambient</a> |
| <a href="#">Elizabeth Port - e4s009</a>   | Tue 08-Oct-2013 | 17:32:36 | 0.141                    | <a href="#">Ambient</a> |
| <a href="#">NYCT - e4s008</a>             | Tue 08-Oct-2013 | 17:42:11 | 0.0369                   | <a href="#">Ambient</a> |



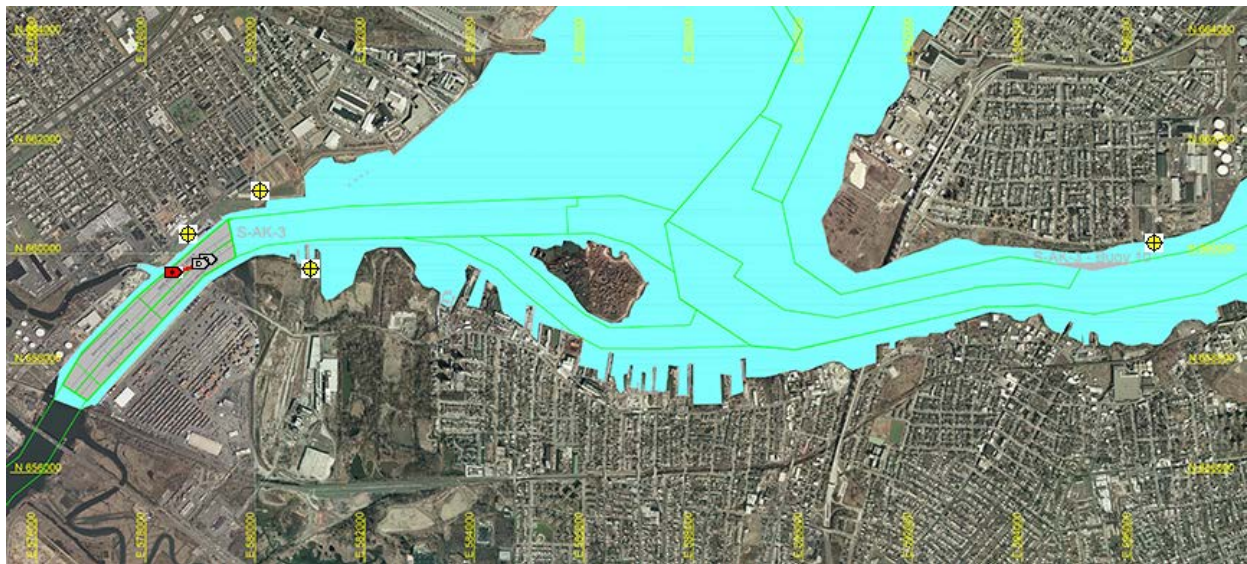
## Arthur Kill Blast Vibration Summary

This site summarizes the measured ground vibrations in northwest Staten Island, from rock blasting in the Arthur Kill and other possible sources. The site is updated daily. The data are intended for the sole use of the US Army Corps of Engineers - New York District, for managing and monitoring the performance of NYNJ Harbor Deepening Project Contract in Arthur Kill starting 25 July 2011.

This page represents the most recent observations.

The Arthur Kill contract area is mapped below in light gray. The navigation grid is superimposed. Today's dredge locations are marked by colored symbols, connected by colored lines to this week's past locations marked by gray symbols. The drilling and blasting barge is marked in red. The easting and northing map coordinates in the New Jersey State Plane coordinate system are in yellow. The locations of active seismograph stations are marked by yellow station symbols. (e4sciences stations are circles. CDB stations are triangles.) Selecting a station activates its station page.

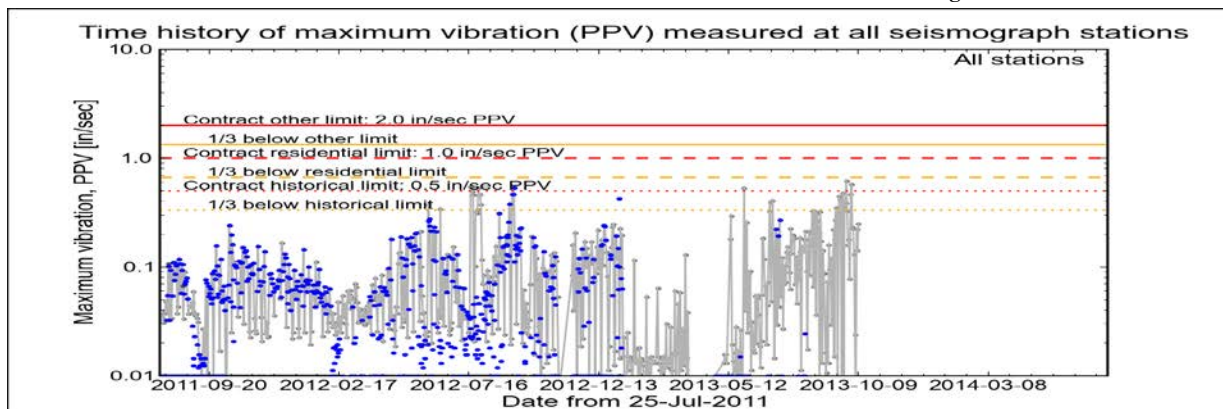
*Click station for station information or click channel for event summary.*



### Latest Event Summary

The graph below is a plot of the maximum vibration recorded by any and all of the numerous seismograph stations during the current observation event (ambient or blast). The horizontal axis gives the date from the start of the project on 25 July 2011. The vertical axis gives the maximum vibration in peak particle velocity (PPV) in units of inches per second (in/sec). The red curves show the project's contract limits; the orange curves show one-third (1/3) below these contract limits. (The light gray curve is ambient-vibration level. The blue dots are blast-vibration levels. The dark gray dots are predicted blast-vibration levels.)

Date and time of last reading: Wed 09-Oct-2013 16:17:37



(Click on graph or [here](#) for larger view)

The table below lists the date, time, level, and station of the maximum-vibration recording for each and every event. Selecting an event activates its event page.

| Blast ID                | Date                            | Time     | Max PPV<br>(in / second) | Max PPV<br>Station               |
|-------------------------|---------------------------------|----------|--------------------------|----------------------------------|
| <a href="#">Ambient</a> | <a href="#">Wed 09-Oct-2013</a> | 16:17:37 | 0.2500                   | <a href="#">Elizabeth Marina</a> |
| <a href="#">Ambient</a> | <a href="#">Tue 08-Oct-2013</a> | 17:32:36 | 0.1410                   | <a href="#">Elizabeth Marina</a> |
| <a href="#">Ambient</a> | <a href="#">Mon 07-Oct-2013</a> | 18:47:33 | 0.2210                   | <a href="#">Elizabeth Marina</a> |
| <a href="#">Ambient</a> | <a href="#">Sun 06-Oct-2013</a> | 12:52:46 | 0.0050                   | <a href="#">NYCT</a>             |
| <a href="#">Ambient</a> | <a href="#">Sat 05-Oct-2013</a> | 16:32:34 | 0.0237                   | <a href="#">Elizabeth Marina</a> |
| <a href="#">Ambient</a> | <a href="#">Fri 04-Oct-2013</a> | 17:02:33 | 0.1300                   | <a href="#">Elizabeth Marina</a> |



## Arthur Kill Blasting Event Summary

This page summarizes measurements of ground vibrations for the selected event. This page displays the maximum vibration recorded at each and every seismograph station during this event.

The Arthur Kill contract area is mapped below with a top-of-rock map. Today's dredge locations are marked by colored symbols, connected by colored lines to this week's past locations marked by gray symbols. The drilling and blasting barge location is marked in red. The easting and northing map coordinates in the New Jersey State Plane coordinate system are in yellow. The locations of active seismograph stations are marked by yellow station symbols. (*e4sciences stations are circles. CDB stations are triangles.*) Selecting a station activates its station page.

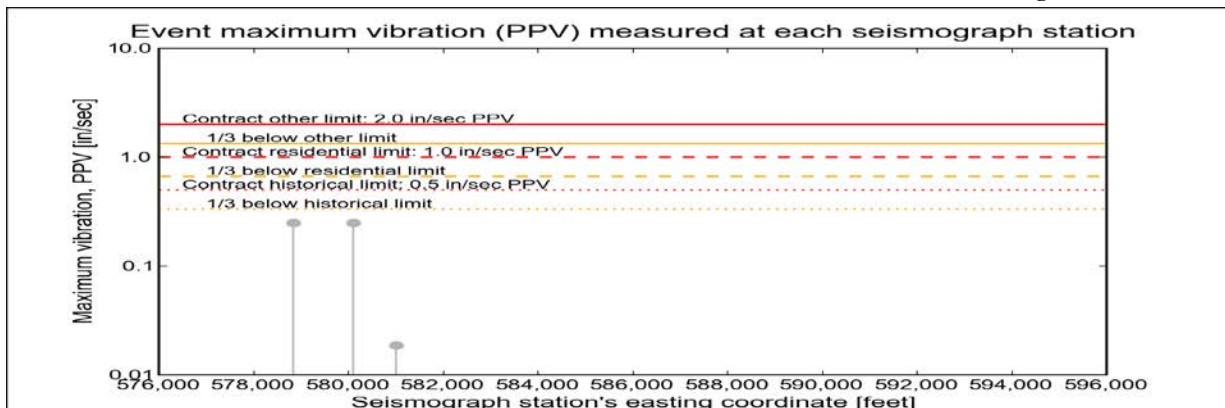
*Click station for more information about the station.*



### Selected Event Summary

The graph below plots the maximum vibration during the selected event period (blast or ambient) recorded at each and every seismograph station along the easting positions. The vertical axis gives the maximum vibration in peak particle velocity (PPV) in units of inches per second (in/sec). If the maximum vibration level at a station is below 0.01 in/sec, the marker is a v-shaped triangle at 0.01 in/sec. (*Light-gray stems indicate ambient-vibration level. Black stems indicate blast-vibration level. Dark-gray stems indicate predicted blast-vibration level.*)

Date of reading: Wed 09-Oct-2013



*(Click on graph or [here](#) for larger view)*

The table below lists the date, time, and level of the maximum-vibration recording at each station for the selected event.

| Station                                   | Date            | Time     | Max PPV<br>(in / second) | Vibration Type          |
|---|-----------------|----------|--------------------------|-------------------------|
| <a href="#">Elizabeth Marina - e4s010</a> | Wed 09-Oct-2013 | 16:17:37 | 0.25                     | <a href="#">Ambient</a> |
| <a href="#">Elizabeth Port - e4s009</a>   | Wed 09-Oct-2013 | 16:17:37 | 0.25                     | <a href="#">Ambient</a> |
| <a href="#">NYCT - e4s008</a>             | Wed 09-Oct-2013 | 16:22:48 | 0.0187                   | <a href="#">Ambient</a> |





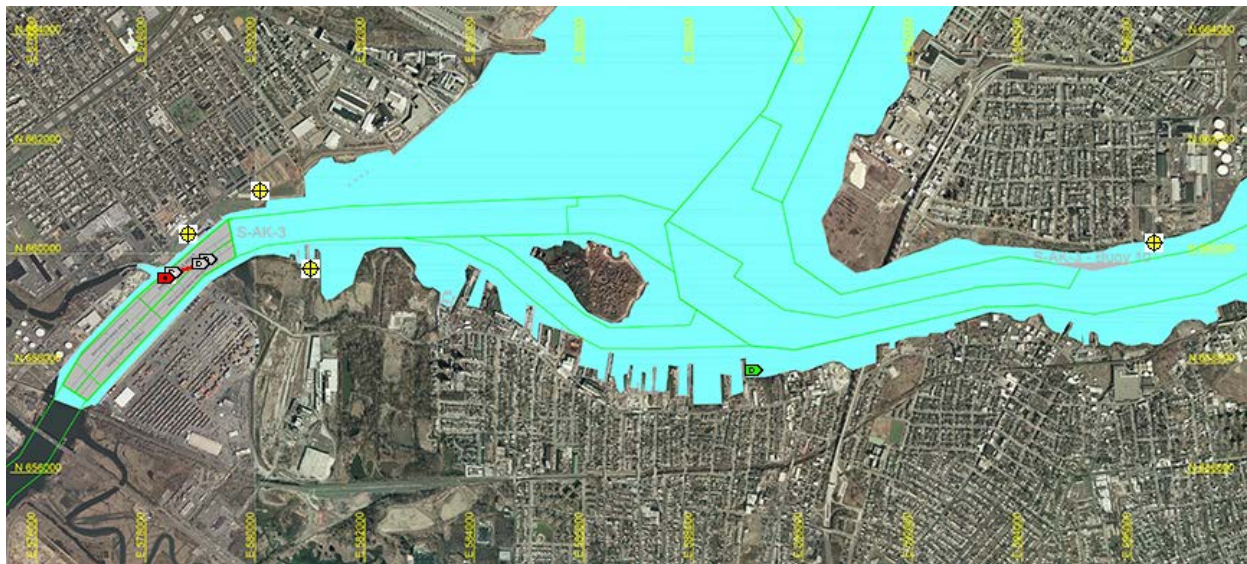
## Arthur Kill Blast Vibration Summary

This site summarizes the measured ground vibrations in northwest Staten Island, from rock blasting in the Arthur Kill and other possible sources. The site is updated daily. The data are intended for the sole use of the US Army Corps of Engineers - New York District, for managing and monitoring the performance of NYNJ Harbor Deepening Project Contract in Arthur Kill starting 25 July 2011.

This page represents the most recent observations.

The Arthur Kill contract area is mapped below in light gray. The navigation grid is superimposed. Today's dredge locations are marked by colored symbols, connected by colored lines to this week's past locations marked by gray symbols. The drilling and blasting barge is marked in red. The easting and northing map coordinates in the New Jersey State Plane coordinate system are in yellow. The locations of active seismograph stations are marked by yellow station symbols. (e4sciences stations are circles. CDB stations are triangles.) Selecting a station activates its station page.

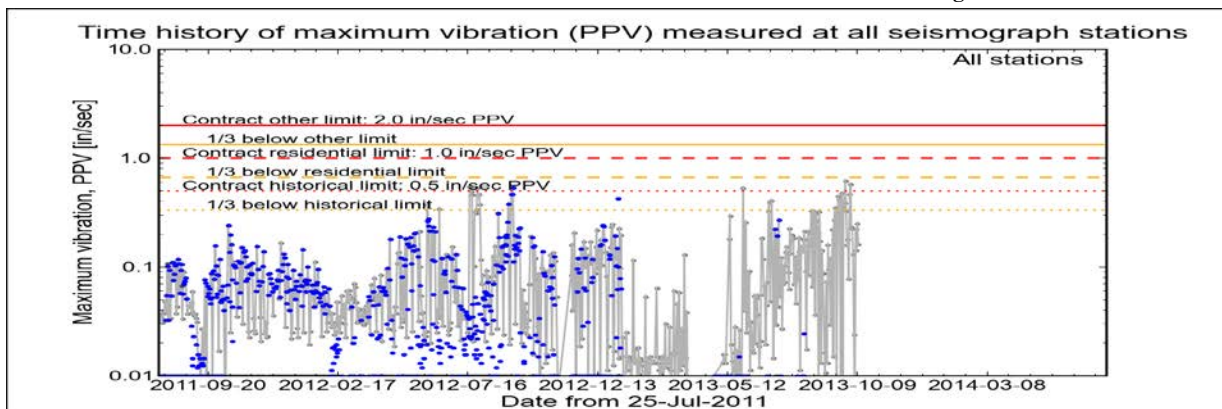
*Click station for station information or click channel for event summary.*



### Latest Event Summary

The graph below is a plot of the maximum vibration recorded by any and all of the numerous seismograph stations during the current observation event (ambient or blast). The horizontal axis gives the date from the start of the project on 25 July 2011. The vertical axis gives the maximum vibration in peak particle velocity (PPV) in units of inches per second (in/sec). The red curves show the project's contract limits; the orange curves show one-third (1/3) below these contract limits. (The light gray curve is ambient-vibration level. The blue dots are blast-vibration levels. The dark gray dots are predicted blast-vibration levels.)

Date and time of last reading: Thu 10-Oct-2013 13:02:37



(Click on graph or [here](#) for larger view)

The table below lists the date, time, level, and station of the maximum-vibration recording for each and every event. Selecting an event activates its event page.

| Blast ID | Date            | Time     | Max PPV<br>(in / second) | Max PPV<br>Station |
|----------|-----------------|----------|--------------------------|--------------------|
| Ambient  | Thu 10-Oct-2013 | 13:02:37 | 0.1610                   | Elizabeth Marina   |
| Ambient  | Wed 09-Oct-2013 | 16:17:37 | 0.2500                   | Elizabeth Marina   |
| Ambient  | Tue 08-Oct-2013 | 17:32:36 | 0.1410                   | Elizabeth Marina   |
| Ambient  | Mon 07-Oct-2013 | 18:47:33 | 0.2210                   | Elizabeth Marina   |
| Ambient  | Sun 06-Oct-2013 | 12:52:46 | 0.0050                   | NYCT               |
| Ambient  | Sat 05-Oct-2013 | 16:32:34 | 0.0237                   | Elizabeth Marina   |



## Arthur Kill Blasting Event Summary

This page summarizes measurements of ground vibrations for the selected event. This page displays the maximum vibration recorded at each and every seismograph station during this event.

The Arthur Kill contract area is mapped below with a top-of-rock map. Today's dredge locations are marked by colored symbols, connected by colored lines to this week's past locations marked by gray symbols. The drilling and blasting barge location is marked in red. The easting and northing map coordinates in the New Jersey State Plane coordinate system are in yellow. The locations of active seismograph stations are marked by yellow station symbols. (*e4sciences stations are circles. CDB stations are triangles.*) Selecting a station activates its station page.

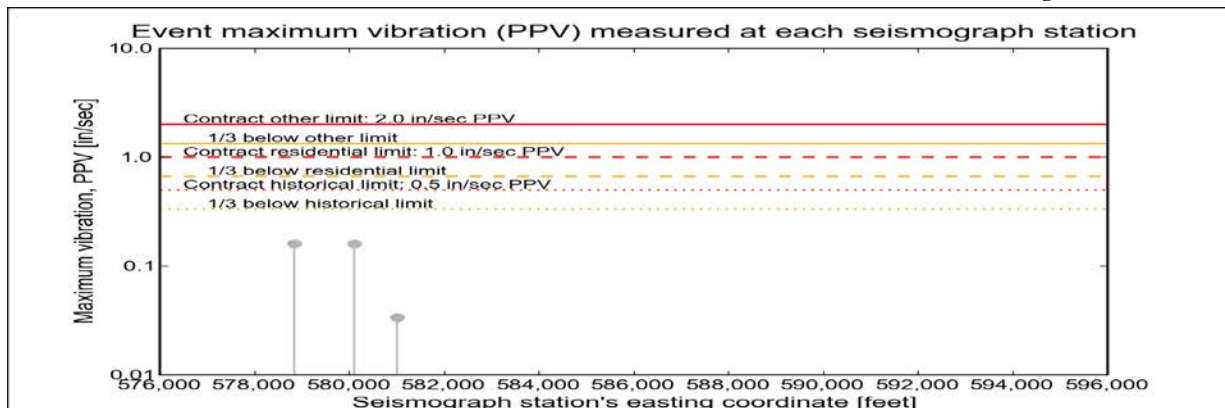
*Click station for more information about the station.*



### Selected Event Summary

The graph below plots the maximum vibration during the selected event period (blast or ambient) recorded at each and every seismograph station along the easting positions. The vertical axis gives the maximum vibration in peak particle velocity (PPV) in units of inches per second (in/sec). If the maximum vibration level at a station is below 0.01 in/sec, the marker is a v-shaped triangle at 0.01 in/sec. (*Light-gray stems indicate ambient-vibration level. Black stems indicate blast-vibration level. Dark-gray stems indicate predicted blast-vibration level.*)

Date of reading: Thu 10-Oct-2013



*(Click on graph or [here](#) for larger view)*

The table below lists the date, time, and level of the maximum-vibration recording at each station for the selected event.

| Station                                   | Date            | Time     | Max PPV<br>(in / second) | Vibration Type          |
|---|-----------------|----------|--------------------------|-------------------------|
| <a href="#">Elizabeth Marina - e4s010</a> | Thu 10-Oct-2013 | 13:02:37 | 0.161                    | <a href="#">Ambient</a> |
| <a href="#">Elizabeth Port - e4s009</a>   | Thu 10-Oct-2013 | 13:02:37 | 0.161                    | <a href="#">Ambient</a> |
| <a href="#">NYCT - e4s008</a>             | Thu 10-Oct-2013 | 12:53:10 | 0.0337                   | <a href="#">Ambient</a> |



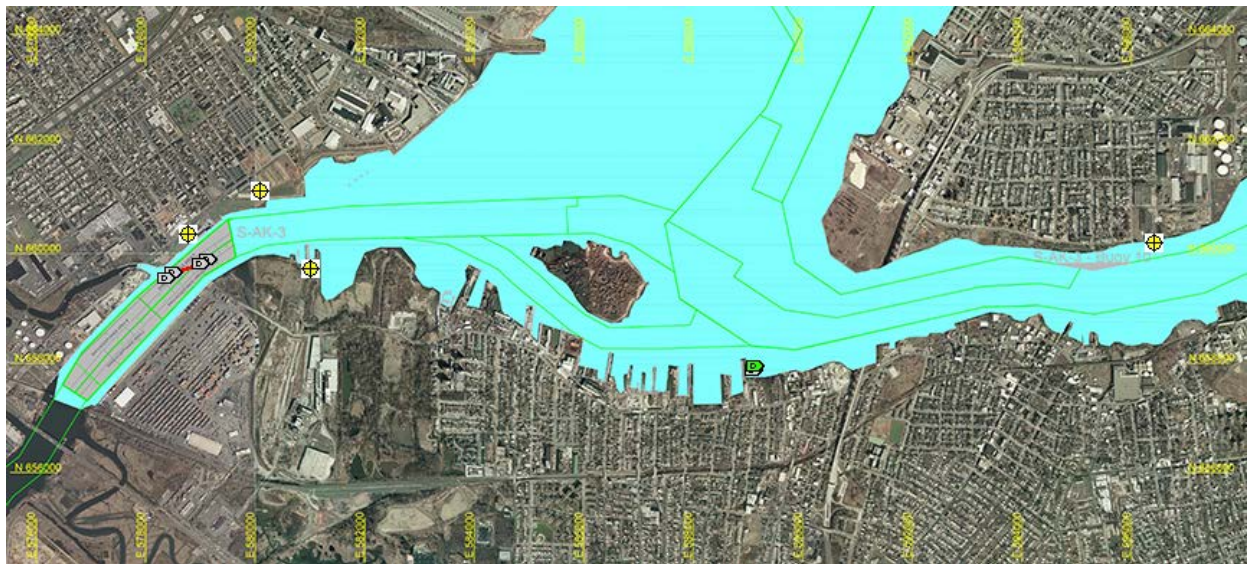
## Arthur Kill Blast Vibration Summary

This site summarizes the measured ground vibrations in northwest Staten Island, from rock blasting in the Arthur Kill and other possible sources. The site is updated daily. The data are intended for the sole use of the US Army Corps of Engineers - New York District, for managing and monitoring the performance of NYNJ Harbor Deepening Project Contract in Arthur Kill starting 25 July 2011.

This page represents the most recent observations.

The Arthur Kill contract area is mapped below in light gray. The navigation grid is superimposed. Today's dredge locations are marked by colored symbols, connected by colored lines to this week's past locations marked by gray symbols. The drilling and blasting barge is marked in red. The easting and northing map coordinates in the New Jersey State Plane coordinate system are in yellow. The locations of active seismograph stations are marked by yellow station symbols. (e4sciences stations are circles. CDB stations are triangles.) Selecting a station activates its station page.

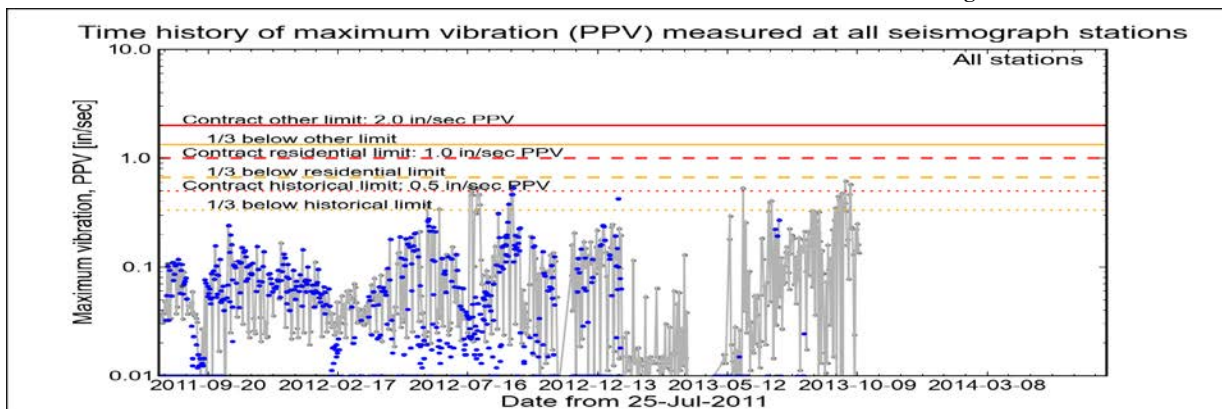
*Click station for station information or click channel for event summary.*



### Latest Event Summary

The graph below is a plot of the maximum vibration recorded by any and all of the numerous seismograph stations during the current observation event (ambient or blast). The horizontal axis gives the date from the start of the project on 25 July 2011. The vertical axis gives the maximum vibration in peak particle velocity (PPV) in units of inches per second (in/sec). The red curves show the project's contract limits; the orange curves show one-third (1/3) below these contract limits. (The light gray curve is ambient-vibration level. The blue dots are blast-vibration levels. The dark gray dots are predicted blast-vibration levels.)

Date and time of last reading: Fri 11-Oct-2013 19:17:33



(Click on graph or [here](#) for larger view)

The table below lists the date, time, level, and station of the maximum-vibration recording for each and every event. Selecting an event activates its event page.

| Blast ID                | Date                            | Time     | Max PPV (in / second) | Max PPV Station                  |
|-------------------------|---------------------------------|----------|-----------------------|----------------------------------|
| <a href="#">Ambient</a> | <a href="#">Fri 11-Oct-2013</a> | 19:17:33 | 0.1350                | <a href="#">Elizabeth Marina</a> |
| <a href="#">Ambient</a> | <a href="#">Thu 10-Oct-2013</a> | 13:02:37 | 0.1610                | <a href="#">Elizabeth Marina</a> |
| <a href="#">Ambient</a> | <a href="#">Wed 09-Oct-2013</a> | 16:17:37 | 0.2500                | <a href="#">Elizabeth Marina</a> |
| <a href="#">Ambient</a> | <a href="#">Tue 08-Oct-2013</a> | 17:32:36 | 0.1410                | <a href="#">Elizabeth Marina</a> |
| <a href="#">Ambient</a> | <a href="#">Mon 07-Oct-2013</a> | 18:47:33 | 0.2210                | <a href="#">Elizabeth Marina</a> |
| <a href="#">Ambient</a> | <a href="#">Sun 06-Oct-2013</a> | 12:52:46 | 0.0050                | <a href="#">NYCT</a>             |

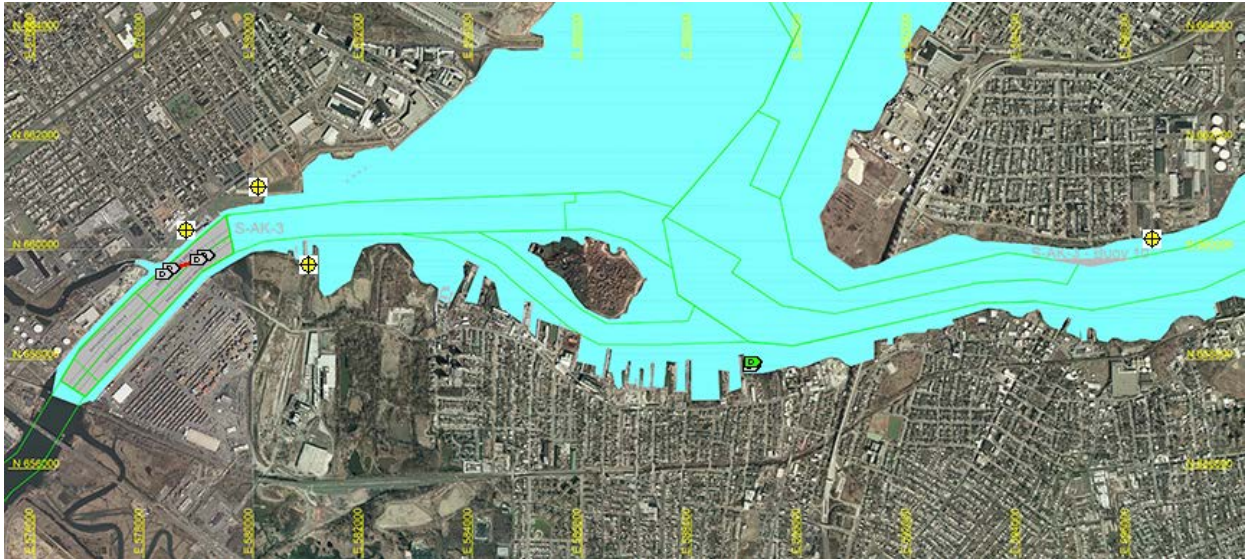


## Arthur Kill Blasting Event Summary

This page summarizes measurements of ground vibrations for the selected event. This page displays the maximum vibration recorded at each and every seismograph station during this event.

The Arthur Kill contract area is mapped below with a top-of-rock map. Today's dredge locations are marked by colored symbols, connected by colored lines to this week's past locations marked by gray symbols. The drilling and blasting barge location is marked in red. The easting and northing map coordinates in the New Jersey State Plane coordinate system are in yellow. The locations of active seismograph stations are marked by yellow station symbols. (*e4sciences stations are circles. CDB stations are triangles.*) Selecting a station activates its station page.

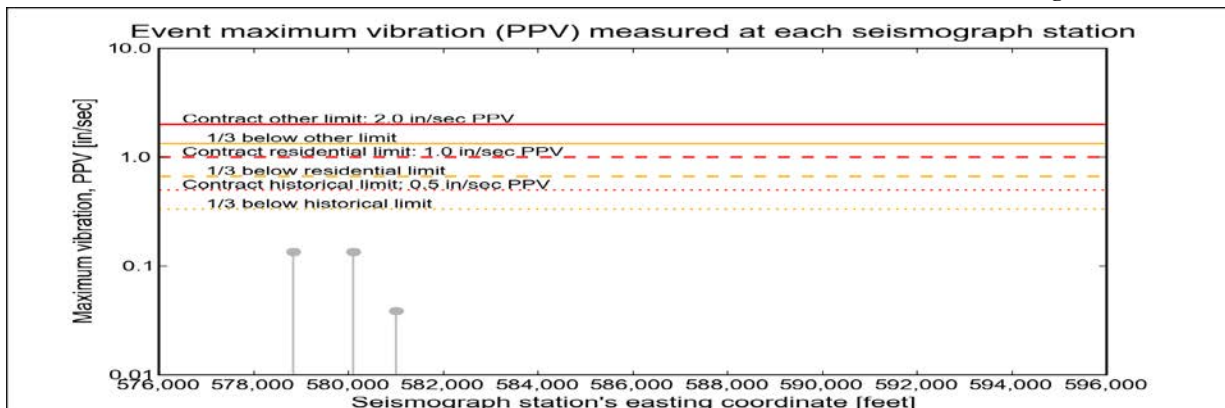
*Click station for more information about the station.*



### Selected Event Summary

The graph below plots the maximum vibration during the selected event period (blast or ambient) recorded at each and every seismograph station along the easting positions. The vertical axis gives the maximum vibration in peak particle velocity (PPV) in units of inches per second (in/sec). If the maximum vibration level at a station is below 0.01 in/sec, the marker is a v-shaped triangle at 0.01 in/sec. (*Light-gray stems indicate ambient-vibration level. Black stems indicate blast-vibration level. Dark-gray stems indicate predicted blast-vibration level.*)

Date of reading: Fri 11-Oct-2013



(Click on graph or [here](#) for larger view)

The table below lists the date, time, and level of the maximum-vibration recording at each station for the selected event.

| Station                                   | Date            | Time     | Max PPV (in / second) | Vibration Type |
|---|-----------------|----------|-----------------------|----------------|
| <a href="#">Elizabeth Marina - e4s010</a> | Fri 11-Oct-2013 | 19:17:33 | 0.135                 | Ambient        |
| <a href="#">Elizabeth Port - e4s009</a>   | Fri 11-Oct-2013 | 19:17:33 | 0.135                 | Ambient        |
| <a href="#">NYCT - e4s008</a>             | Fri 11-Oct-2013 | 12:52:45 | 0.0387                | Ambient        |



## Arthur Kill Blast Vibration Summary

This site summarizes the measured ground vibrations in northwest Staten Island, from rock blasting in the Arthur Kill and other possible sources. The site is updated daily. The data are intended for the sole use of the US Army Corps of Engineers - New York District, for managing and monitoring the performance of NYNJ Harbor Deepening Project Contract in Arthur Kill starting 25 July 2011.

This page represents the most recent observations.

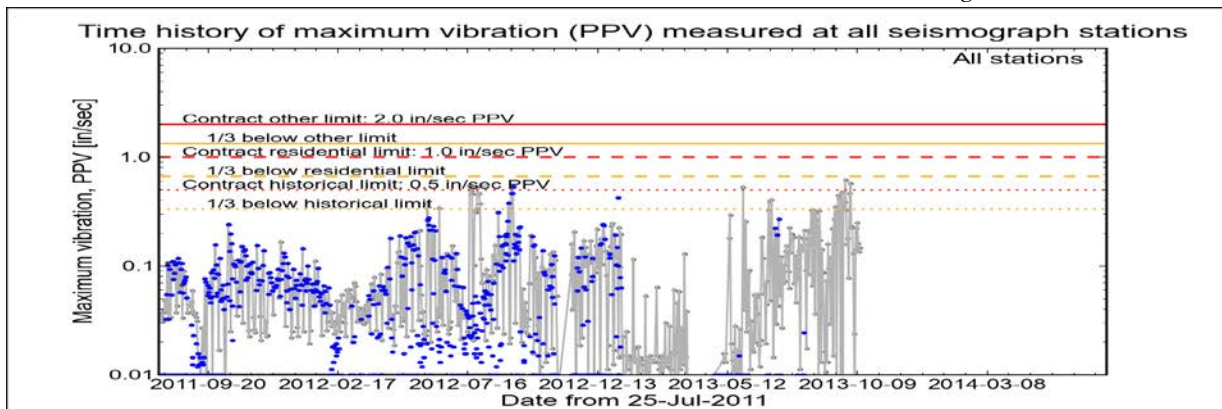
The Arthur Kill contract area is mapped below in light gray. The navigation grid is superimposed. Today's dredge locations are marked by colored symbols, connected by colored lines to this week's past locations marked by gray symbols. The drilling and blasting barge is marked in red. The easting and northing map coordinates in the New Jersey State Plane coordinate system are in yellow. The locations of active seismograph stations are marked by yellow station symbols. (e4sciences stations are circles. CDB stations are triangles.) Selecting a station activates its station page.

*Click station for station information or click channel for event summary.*

### Latest Event Summary

The graph below is a plot of the maximum vibration recorded by any and all of the numerous seismograph stations during the current observation event (ambient or blast). The horizontal axis gives the date from the start of the project on 25 July 2011. The vertical axis gives the maximum vibration in peak particle velocity (PPV) in units of inches per second (in/sec). The red curves show the project's contract limits; the orange curves show one-third (1/3) below these contract limits. (The light gray curve is ambient-vibration level. The blue dots are blast-vibration levels. The dark gray dots are predicted blast-vibration levels.)

Date and time of last reading: Sat 12-Oct-2013 19:55:51



(Click on graph or [here](#) for larger view)

The table below lists the date, time, level, and station of the maximum-vibration recording for each and every event. Selecting an event activates its event page.

| Blast ID                | Date                            | Time     | Max PPV<br>(in / second) | Max PPV<br>Station               |
|-------------------------|---------------------------------|----------|--------------------------|----------------------------------|
| <a href="#">Ambient</a> | <a href="#">Sat 12-Oct-2013</a> | 19:55:51 | 0.1470                   | <a href="#">Elizabeth Marina</a> |
| <a href="#">Ambient</a> | <a href="#">Fri 11-Oct-2013</a> | 19:17:33 | 0.1350                   | <a href="#">Elizabeth Marina</a> |
| <a href="#">Ambient</a> | <a href="#">Thu 10-Oct-2013</a> | 13:02:37 | 0.1610                   | <a href="#">Elizabeth Marina</a> |
| <a href="#">Ambient</a> | <a href="#">Wed 09-Oct-2013</a> | 16:17:37 | 0.2500                   | <a href="#">Elizabeth Marina</a> |
| <a href="#">Ambient</a> | <a href="#">Tue 08-Oct-2013</a> | 17:32:36 | 0.1410                   | <a href="#">Elizabeth Marina</a> |
| <a href="#">Ambient</a> | <a href="#">Mon 07-Oct-2013</a> | 18:47:33 | 0.2210                   | <a href="#">Elizabeth Marina</a> |



## Arthur Kill Blasting Event Summary

This page summarizes measurements of ground vibrations for the selected event. This page displays the maximum vibration recorded at each and every seismograph station during this event.

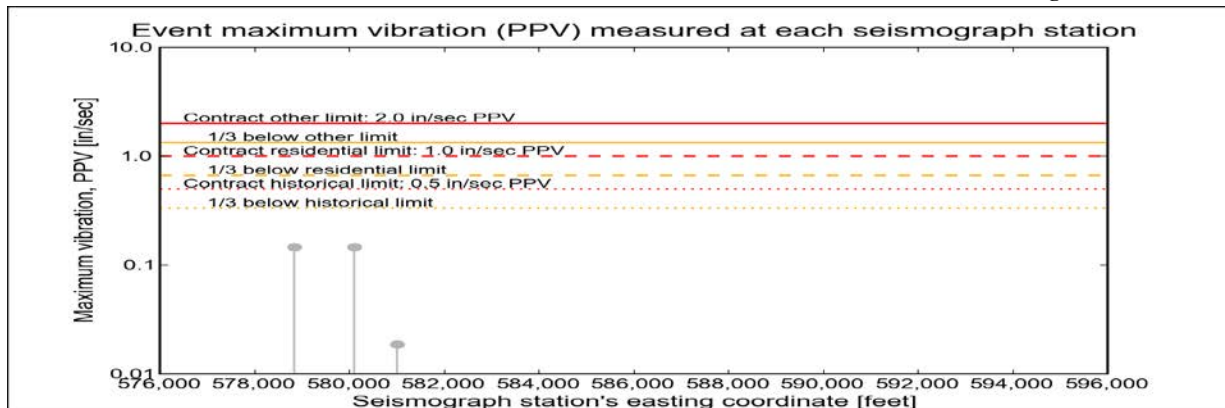
The Arthur Kill contract area is mapped below with a top-of-rock map. Today's dredge locations are marked by colored symbols, connected by colored lines to this week's past locations marked by gray symbols. The drilling and blasting barge location is marked in red. The easting and northing map coordinates in the New Jersey State Plane coordinate system are in yellow. The locations of active seismograph stations are marked by yellow station symbols. (*e4sciences stations are circles. CDB stations are triangles.*) Selecting a station activates its station page.

*Click station for more information about the station.*

### Selected Event Summary

The graph below plots the maximum vibration during the selected event period (blast or ambient) recorded at each and every seismograph station along the easting positions. The vertical axis gives the maximum vibration in peak particle velocity (PPV) in units of inches per second (in/sec). If the maximum vibration level at a station is below 0.01 in/sec, the marker is a v-shaped triangle at 0.01 in/sec. (*Light-gray stems indicate ambient-vibration level. Black stems indicate blast-vibration level. Dark-gray stems indicate predicted blast-vibration level.*)

Date of reading: Sat 12-Oct-2013



(Click on graph or [here](#) for larger view)

The table below lists the date, time, and level of the maximum-vibration recording at each station for the selected event.

| Station                                   | Date            | Time     | Max PPV<br>(in / second) | Vibration Type |
|---|-----------------|----------|--------------------------|----------------|
| <a href="#">Elizabeth Marina - e4s010</a> | Sat 12-Oct-2013 | 19:55:51 | 0.147                    | Ambient        |
| <a href="#">Elizabeth Port - e4s009</a>   | Sat 12-Oct-2013 | 19:55:51 | 0.147                    | Ambient        |
| <a href="#">NYCT - e4s008</a>             | Sat 12-Oct-2013 | 14:52:46 | 0.0187                   | Ambient        |



## Arthur Kill Blast Vibration Summary

This site summarizes the measured ground vibrations in northwest Staten Island, from rock blasting in the Arthur Kill and other possible sources. The site is updated daily. The data are intended for the sole use of the US Army Corps of Engineers - New York District, for managing and monitoring the performance of NYNJ Harbor Deepening Project Contract in Arthur Kill starting 25 July 2011.

This page represents the most recent observations.

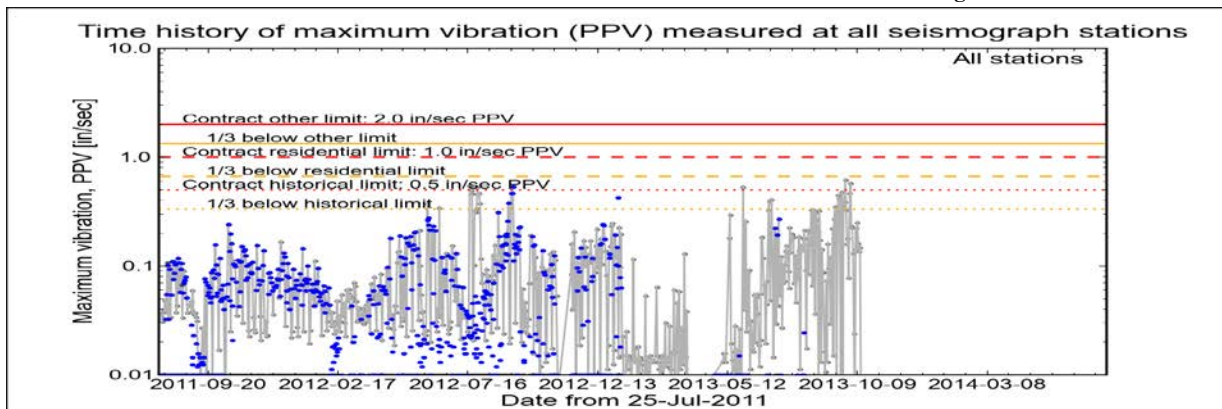
The Arthur Kill contract area is mapped below in light gray. The navigation grid is superimposed. Today's dredge locations are marked by colored symbols, connected by colored lines to this week's past locations marked by gray symbols. The drilling and blasting barge is marked in red. The easting and northing map coordinates in the New Jersey State Plane coordinate system are in yellow. The locations of active seismograph stations are marked by yellow station symbols. (e4sciences stations are circles. CDB stations are triangles.) Selecting a station activates its station page.

*Click station for station information or click channel for event summary.*

### Latest Event Summary

The graph below is a plot of the maximum vibration recorded by any and all of the numerous seismograph stations during the current observation event (ambient or blast). The horizontal axis gives the date from the start of the project on 25 July 2011. The vertical axis gives the maximum vibration in peak particle velocity (PPV) in units of inches per second (in/sec). The red curves show the project's contract limits; the orange curves show one-third (1/3) below these contract limits. (The light gray curve is ambient-vibration level. The blue dots are blast-vibration levels. The dark gray dots are predicted blast-vibration levels.)

Date and time of last reading: Sun 13-Oct-2013 19:22:46



(Click on graph or [here](#) for larger view)

The table below lists the date, time, level, and station of the maximum-vibration recording for each and every event. Selecting an event activates its event page.

| Blast ID                | Date                            | Time     | Max PPV (in / second) | Max PPV Station                  |
|-------------------------|---------------------------------|----------|-----------------------|----------------------------------|
| <a href="#">Ambient</a> | <a href="#">Sun 13-Oct-2013</a> | 19:22:46 | 0.0075                | <a href="#">NYCT</a>             |
| <a href="#">Ambient</a> | <a href="#">Sat 12-Oct-2013</a> | 19:55:51 | 0.1470                | <a href="#">Elizabeth Marina</a> |
| <a href="#">Ambient</a> | <a href="#">Fri 11-Oct-2013</a> | 19:17:33 | 0.1350                | <a href="#">Elizabeth Marina</a> |
| <a href="#">Ambient</a> | <a href="#">Thu 10-Oct-2013</a> | 13:02:37 | 0.1610                | <a href="#">Elizabeth Marina</a> |
| <a href="#">Ambient</a> | <a href="#">Wed 09-Oct-2013</a> | 16:17:37 | 0.2500                | <a href="#">Elizabeth Marina</a> |
| <a href="#">Ambient</a> | <a href="#">Tue 08-Oct-2013</a> | 17:32:36 | 0.1410                | <a href="#">Elizabeth Marina</a> |



## Arthur Kill Blasting Event Summary

This page summarizes measurements of ground vibrations for the selected event. This page displays the maximum vibration recorded at each and every seismograph station during this event.

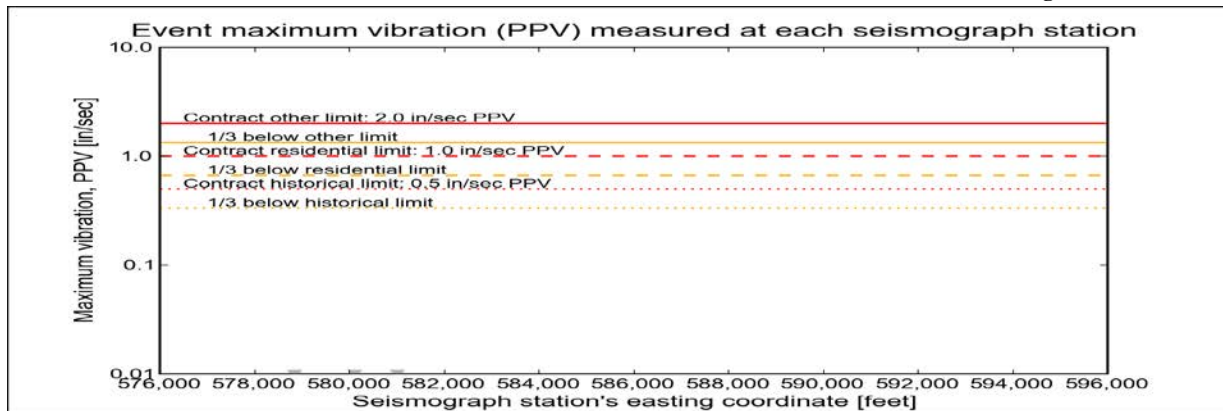
The Arthur Kill contract area is mapped below with a top-of-rock map. Today's dredge locations are marked by colored symbols, connected by colored lines to this week's past locations marked by gray symbols. The drilling and blasting barge location is marked in red. The easting and northing map coordinates in the New Jersey State Plane coordinate system are in yellow. The locations of active seismograph stations are marked by yellow station symbols. (*e4sciences stations are circles. CDB stations are triangles.*) Selecting a station activates its station page.

*Click station for more information about the station.*

### Selected Event Summary

The graph below plots the maximum vibration during the selected event period (blast or ambient) recorded at each and every seismograph station along the easting positions. The vertical axis gives the maximum vibration in peak particle velocity (PPV) in units of inches per second (in/sec). If the maximum vibration level at a station is below 0.01 in/sec, the marker is a v-shaped triangle at 0.01 in/sec. (*Light-gray stems indicate ambient-vibration level. Black stems indicate blast-vibration level. Dark-gray stems indicate predicted blast-vibration level.*)

Date of reading: Sun 13-Oct-2013



(Click on graph or [here](#) for larger view)

The table below lists the date, time, and level of the maximum-vibration recording at each station for the selected event.

| Station                                   | Date            | Time     | Max PPV (in / second) | Vibration Type |
|---|-----------------|----------|-----------------------|----------------|
| <a href="#">Elizabeth Marina - e4s010</a> | Sun 13-Oct-2013 | 18:47:33 | 0.00437               | Ambient        |
| <a href="#">Elizabeth Port - e4s009</a>   | Sun 13-Oct-2013 | 18:47:33 | 0.00437               | Ambient        |
| <a href="#">NYCT - e4s008</a>             | Sun 13-Oct-2013 | 19:22:46 | 0.0075                | Ambient        |