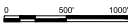


PROJECT SPECIFIC NOTES:

- THE INFORMATION DEPICTED ON THIS MAP REPRESENTS THE RESULTS OF SURVEYS MADE ON THE DATES INDICATED AND CAN ONLY BE CONSIDERED AS THE GENERAL CONDITIONS EXISTING AT THAT TIME.
- THE SOUNDINGS ON THIS MAP MEET EM 1110-2-1003 ACCURACY STANDARDS.
- COORDINATES REFER TO US STATE PLANE COORDINATE SYSTEM NAD 1983, NEW JERSEY MERCATOR - ZONE 2000, US SURVEY FEET.
- SOUNDINGS ON THIS MAP REFER TO THE PLANE OF MEAN LOWER LOW WATER (MLLW) [EPOCH 1985-2001]
- MEAN LOWER LOW WATER IS 3.0 FEET BELOW NAVD88 AS DETERMINED USING VDATUM (VER. 4.8).
- SOUNDINGS DEPICTED ON THIS MAP ARE BASED ON A 3' x 3' MEDIAN CELL, SORTED TO A 30' INTERVAL.
- CONTOURS ON THIS MAP WERE GENERATED USING THE 3' x 3' DATA SET.
- THE DATA DEPICTED ON THIS MAP SHOULD NOT BE USED FOR VOLUME CALCULATION PURPOSES.
- AERIAL IMAGERY PROVIDED BY NJ GIS IMAGERY WAREHOUSE (2020) AND IS FOR ORIENTATION PURPOSES ONLY.
- THE PLANNETRICS DEPICTED ON THIS MAP ARE FOR ORIENTATION PURPOSES ONLY.
- THIS SURVEY WAS PERFORMED USING REAL TIME KINEMATIC GPS FROM STATION "KEYNET RTN".
- THIS MAP IS CEPD COMPLIANT IN ACCORDANCE WITH ER 1110-2-8160 AND EM 1110-2-6056.



LOCAL CONTROL DATA
BENCHMARK: 6.M. TP
ELEVATION: 8.36' (NAVD 1988)

NSRS BENCHMARK
BENCHMARK: H K 2A (Pb:KVG270)
ELEVATION: 39.15' (NAVD 1988)



US ARMY CORPS OF ENGINEERS
NEW YORK DISTRICT

MA
UP

SCALE: ONE INCH = 100 FEET	FIELD BOOKS: F.S. 20200208
DATE OF SURVEY: 05-11 JAN. 2008	RTD. NO./FILE NO.: 9054

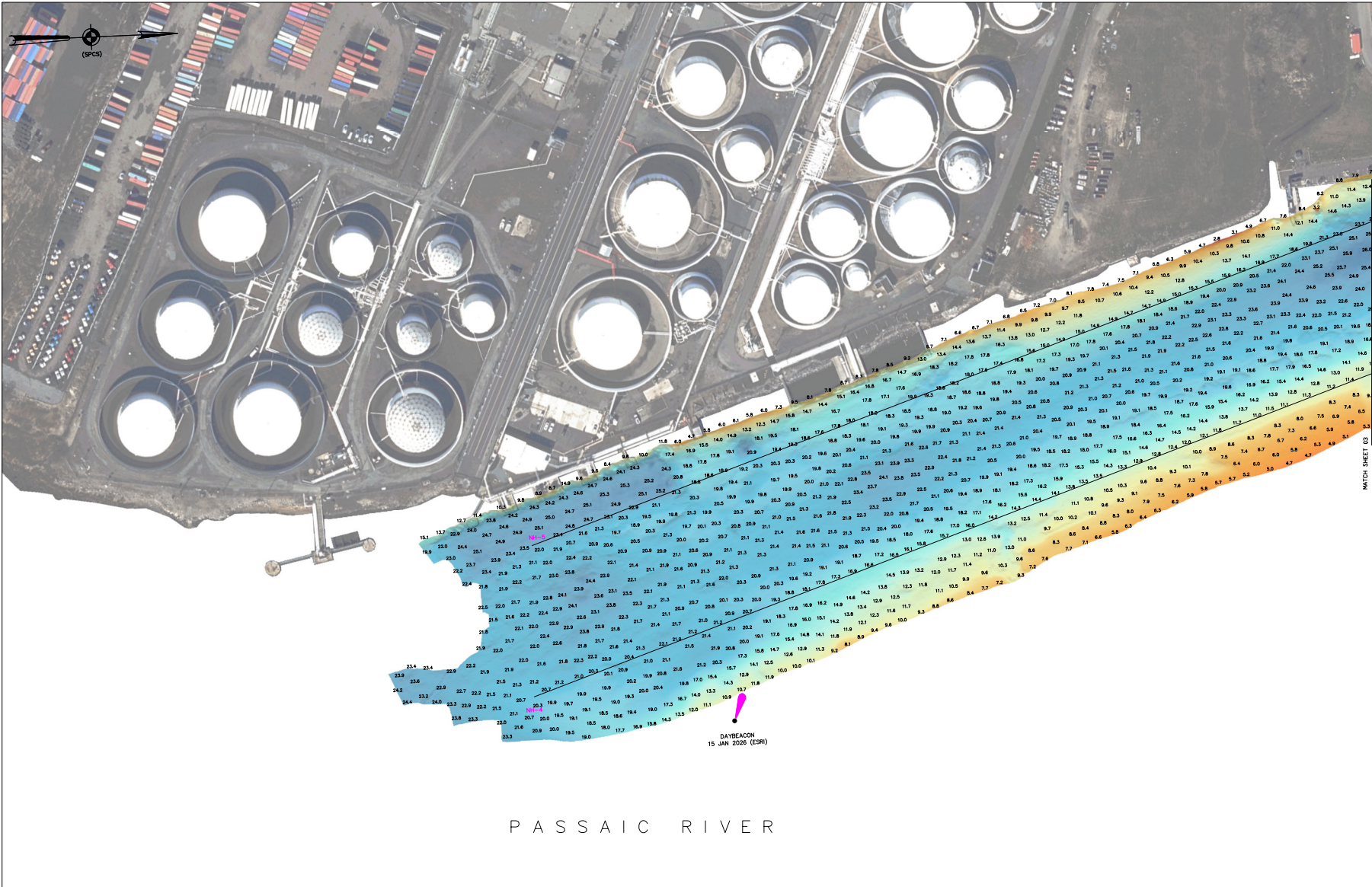
APPROVED: D. ROGERS FIELD ENGINEER	APPROVED: R. SMITH CHIEF OF SURVEY SUPPORT SECTION
APPROVED: P. BIRCH CHIEF OF SURVEY BRANCH	APPROVED: [Signature] DATE: 29 JAN. 2008

DEPARTMENT OF THE ARMY
U.S. ARMY CORPS OF ENGINEERS
NEW YORK DISTRICT
NEW YORK, NEW YORK 10278
OPERATIONS DIVISION
SURVEYS AND MAPPING BRANCH
CONAN-OP-SS

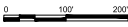
NEWARK BAY, HACKENSACK, & PASSAIC RIVERS, N.J.
PASSAIC RIVER
CONDITION SURVEY

1 2 3 4 5 6 7 8 9 10 11 12 13 14 15 16 17 18 19 20

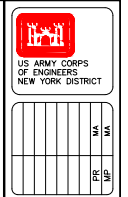
P
N
M
L
K
J
H
G
F
E
D
C
B
A



PASSAIC RIVER



* FOR PROJECT SPECIFIC NOTES AND CONTROL, REFER TO VH-101.



US ARMY CORPS OF ENGINEERS
NEW YORK DISTRICT

MA
MA
PR
UP

SCALE: ONE INCH = 100 FEET

FIELD BOOKS: F.S. 20260108

APPROVED: D. ROGERS
APPROVED: R. SMITH
APPROVED: P. BLUM

DATE: 29 JAN 2026

DEPARTMENT OF THE ARMY
U.S. ARMY CORPS OF ENGINEERS
NEW YORK DISTRICT
OPERATIONS DIVISION
SURVEYS AND MAPPING BRANCH
CONRAD-OP-SS

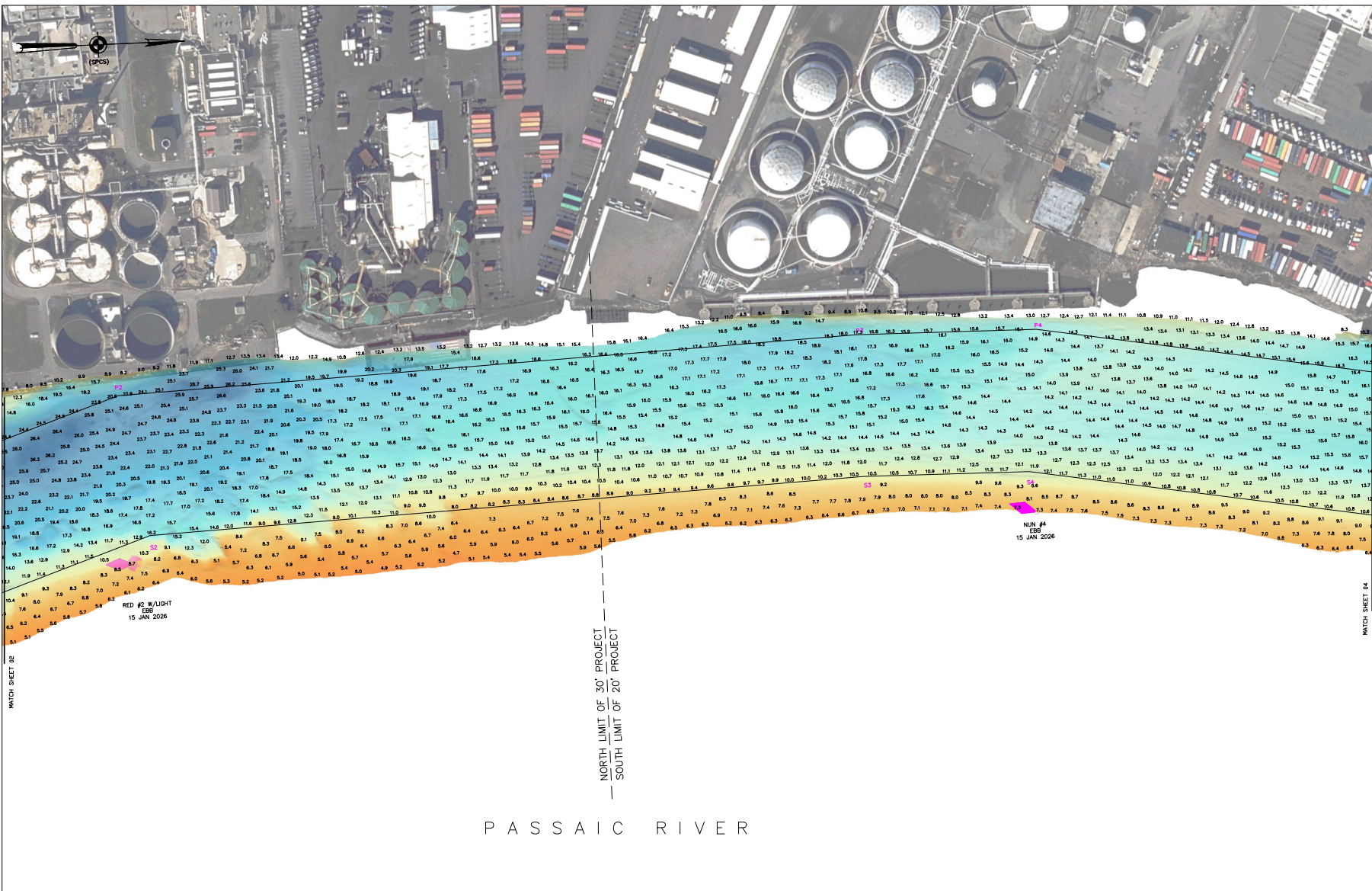
NEWARK BAY, HACKENSACK, & PASSAIC RIVERS, N.J.
PASSAIC RIVER
CONDITION SURVEY

VH-102

2 OF 5

1 2 3 4 5 6 7 8 9 10 11 12 13 14 15 16 17 18 19 20

P
N
M
L
K
J
H
G
F
E
D
C
B
A

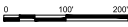


RED #2 W/LIGHT
EBB
15 JAN 2026

NUM #4
EBB
15 JAN 2026

NORTH LIMIT OF 30' PROJECT
SOUTH LIMIT OF 20' PROJECT

PASSAIC RIVER



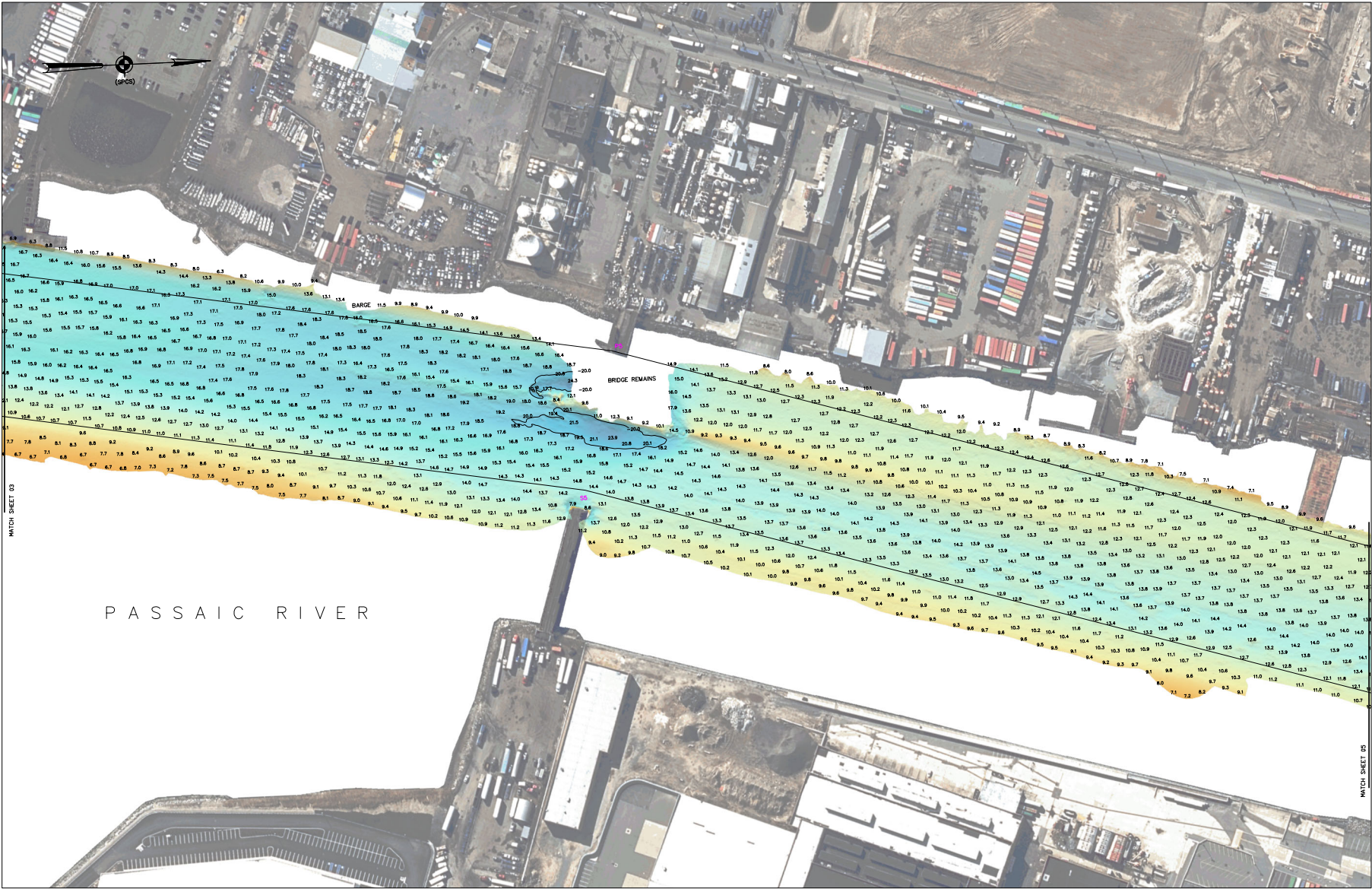
MATCH SHEET 04

<p>US ARMY CORPS OF ENGINEERS NEW YORK DISTRICT</p>	
DATES OF SURVEY: 05-11 JAN 2026	SCALE: ONE INCH = 100 FEET
FIELD BOOKS: F.S.20260108	FIELD BOOKS: F.S.20260108
RTO NO./FILE NO.: 904	RTO NO./FILE NO.: 904
APPROVED: D. ROGERS FIELD COMMANDER	APPROVED: R. SMITH CHIEF OF SURVEY SUPPORT SECTION
APPROVED: P. BRUNO CHIEF OF SURVEY SUPPORT SECTION	APPROVED: J. BRUNO CHIEF OF SURVEY SUPPORT SECTION
DEPARTMENT OF THE ARMY U.S. ARMY CORPS OF ENGINEERS NEW YORK DISTRICT NEW YORK, NEW YORK 10278	OPERATIONS DIVISION SURVEYS AND MAPPING BRANCH CONRAD-OP-SS
DATE: 29 JAN 2026	DATE: 29 JAN 2026
NEWARK BAY, HACKENSACK, & PASSAIC RIVERS, N.J. PASSAIC RIVER CONDITION SURVEY	VH-103 3 OF 5

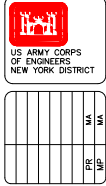
* FOR PROJECT SPECIFIC NOTES AND CONTROL, REFER TO VH-101.

1 2 3 4 5 6 7 8 9 10 11 12 13 14 15 16 17 18 19 20

P
N
M
L
K
J
H
G
F
E
D
C
B
A



PASSAIC RIVER



DATES OF SURVEY:
05-11 JAN. 2008

SCALE:
ONE INCH = 100 FEET

FIELD BOOKS:
F.S. 2008008

REC. NO./FILE NO.: 604

MA
UP

APPROVED: D. ROGERS
FIELD SUPERVISOR

APPROVED: R. SMITH
FIELD ENGINEER

APPROVED: P. BROWN
CHIEF OF SURVEY SUPPORT SECTION

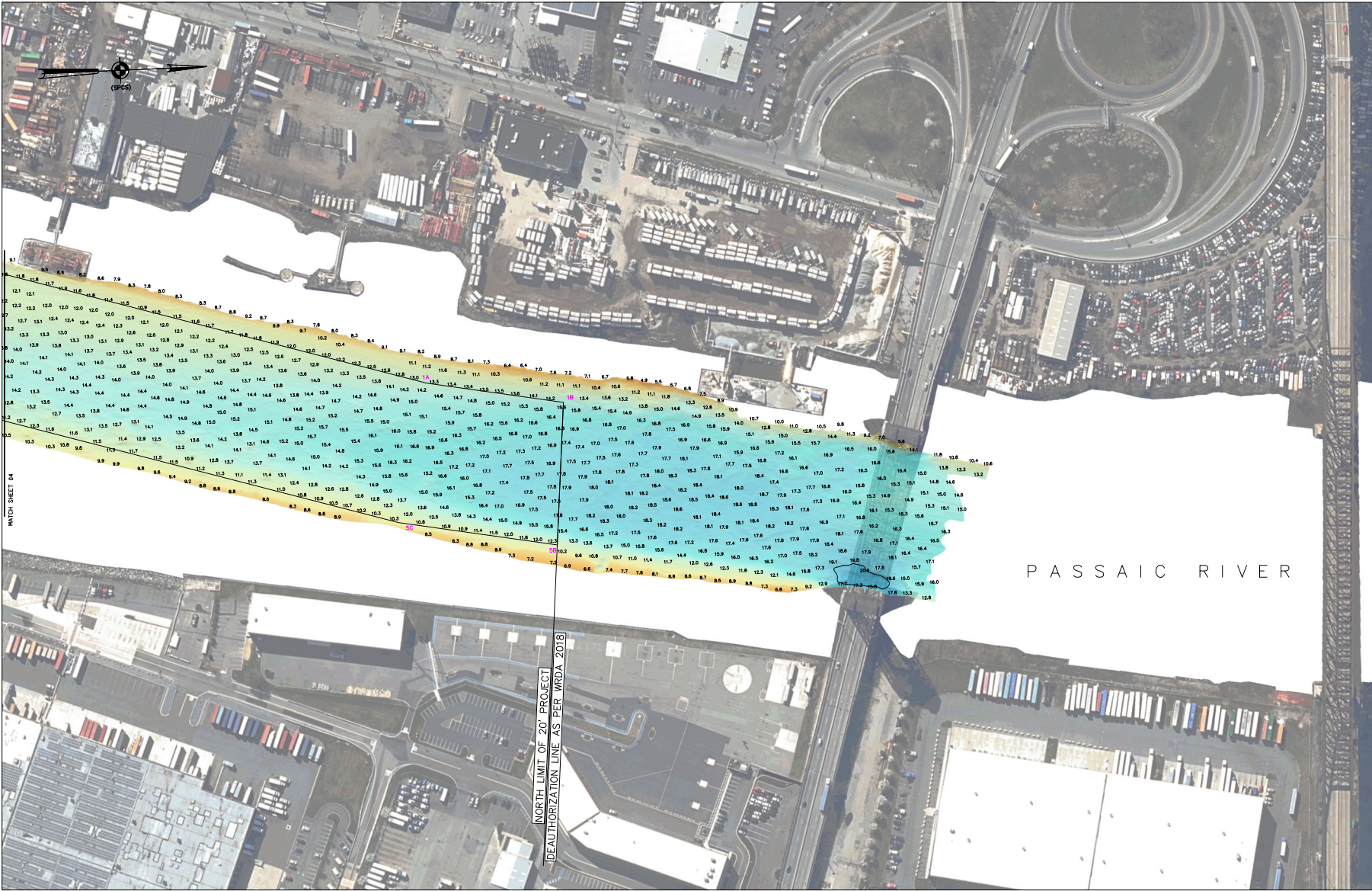
DATE: 29 JAN. 2008

DEPARTMENT OF THE ARMY
U.S. ARMY CORPS OF ENGINEERS
NEW YORK DISTRICT
NEW YORK, NEW YORK 10278

OPERATIONS DIVISION
SURVEYS AND MAPPING BRANCH
CON-OP-55

NEWARK BAY, HACKENSACK, & PASSAIC RIVERS, N.J.
PASSAIC RIVER
CONDITION SURVEY

* FOR PROJECT SPECIFIC NOTES AND CONTROL, REFER TO VH-101.



* FOR PROJECT SPECIFIC NOTES AND CONTROL, REFER TO VH-101.



MA
NY
PA
VA
UP

DATE: 29 JAN 2008
 RTO NO./FILE NO.: 9054

SCALE: ONE INCH = 100 FEET
 FIELD BOOKS: F.S. 20200108

APPROVED: D. ROGERS
 FIELD SUPERVISOR
 APPROVED: R. SMITH
 DISTRICT ENGINEER
 APPROVED: P. BRAY
 CHIEF OF SURVEY SUPPORT SECTION
 DATE: 29 JAN 2008

DEPARTMENT OF THE ARMY
 U.S. ARMY CORPS OF ENGINEERS
 NEW YORK DISTRICT
 NEW YORK, NEW YORK 10278
 OPERATIONS DIVISION
 SURVEYING AND MAPPING BRANCH
 CONCAC-OP-SS

NEWARK BAY, HACKENSACK, & PASSAIC RIVERS, N.J.
 PASSAIC RIVER
 CONDITION SURVEY