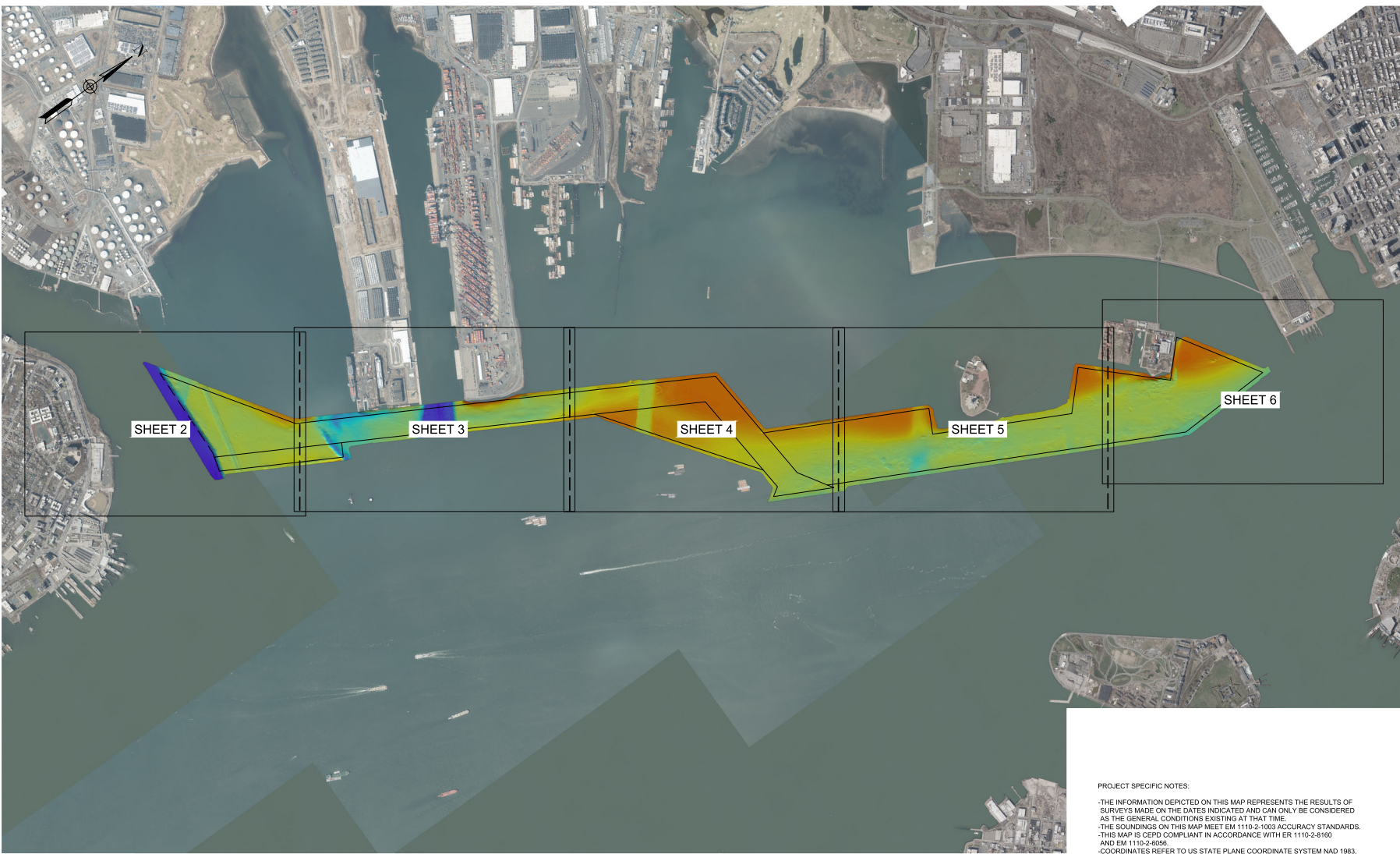


1 2 3 4 5 6 7 8 9 10 11 12 13 14 15 16 17 18 19 20

P
N
M
L
K
J
H
G
F
E
D
C
B
A



NSRS BENCHMARK	LOCAL CONTROL
BENCHMARK: S SIMON (PID:BBCW10)	BENCHMARK: LSP SOUTH (PID:KV8856)
ELEVATION: 7.25'	ELEVATION: 8.57'

PROJECT SPECIFIC NOTES:

- THE INFORMATION DEPICTED ON THIS MAP REPRESENTS THE RESULTS OF SURVEYS MADE ON THE DATES INDICATED AND CAN ONLY BE CONSIDERED AS THE GENERAL CONDITIONS EXISTING AT THAT TIME.
- THE SOUNDINGS ON THIS MAP MEET EM 1110-2-1003 ACCURACY STANDARDS. THIS MAP IS CEPD COMPLIANT IN ACCORDANCE WITH ER 1110-2-8160 AND EM 1110-2-6956.
- COORDINATES REFER TO US STATE PLANE COORDINATE SYSTEM NAD 1983, NEW JERSEY MERCATOR - ZONE 2000, US SURVEY FEET.
- SOUNDINGS ON THIS MAP REFER TO THE PLANE OF MEAN LOWER LOW WATER (MLLW) (EPOCH 1983-2001).
- MEAN LOWER LOW WATER IS 2.8 FEET BELOW NAVD88 AS DETERMINED USING VDATUM (VER. 4.6.1).
- SOUNDINGS DEPICTED ON THIS MAP ARE BASED ON A 3' x 3' MEDIAN CELL, SORTED TO A 60" INTERVAL.
- CONTOURS ON THIS MAP WERE GENERATED USING THE 3 x 3 DATA SET. THE DATA DEPICTED ON THIS MAP SHOULD NOT BE USED FOR VOLUME CALCULATION PURPOSES.
- AERIAL IMAGERY PROVIDED BY DISCOVER GIS DATA NY ORTHO 2022 AND IS FOR ORIENTATION PURPOSES ONLY.
- THIS SURVEY WAS PERFORMED USING REAL TIME KINEMATIC GPS FROM STATION 'CAVEN POINT'.



PR: ESCALAN
USP: BENICAY

DATES OF SURVEY:
28 JANUARY 2022
30 JANUARY 2022
27 FEBRUARY 2022
3 MARCH 2022

SCALE:
ONE INCH = 1000 FEET

FIELD BOOKS:

APPROVED: P. BEARDSLEY (PID:BCD001)
B. HIGGINS (PID:BCD001)
P. BHADAR (PID:BCD001)

APPROVED: CHIEF OF SURVEY AND MAPPING BRANCH
CHIEF OF SURVEY AND MAPPING BRANCH

ISSUE DATE: 11 MARCH 2022

U.S. ARMY CORPS OF ENGINEERS
NEW YORK DISTRICT
NEW YORK, NEW YORK 10278

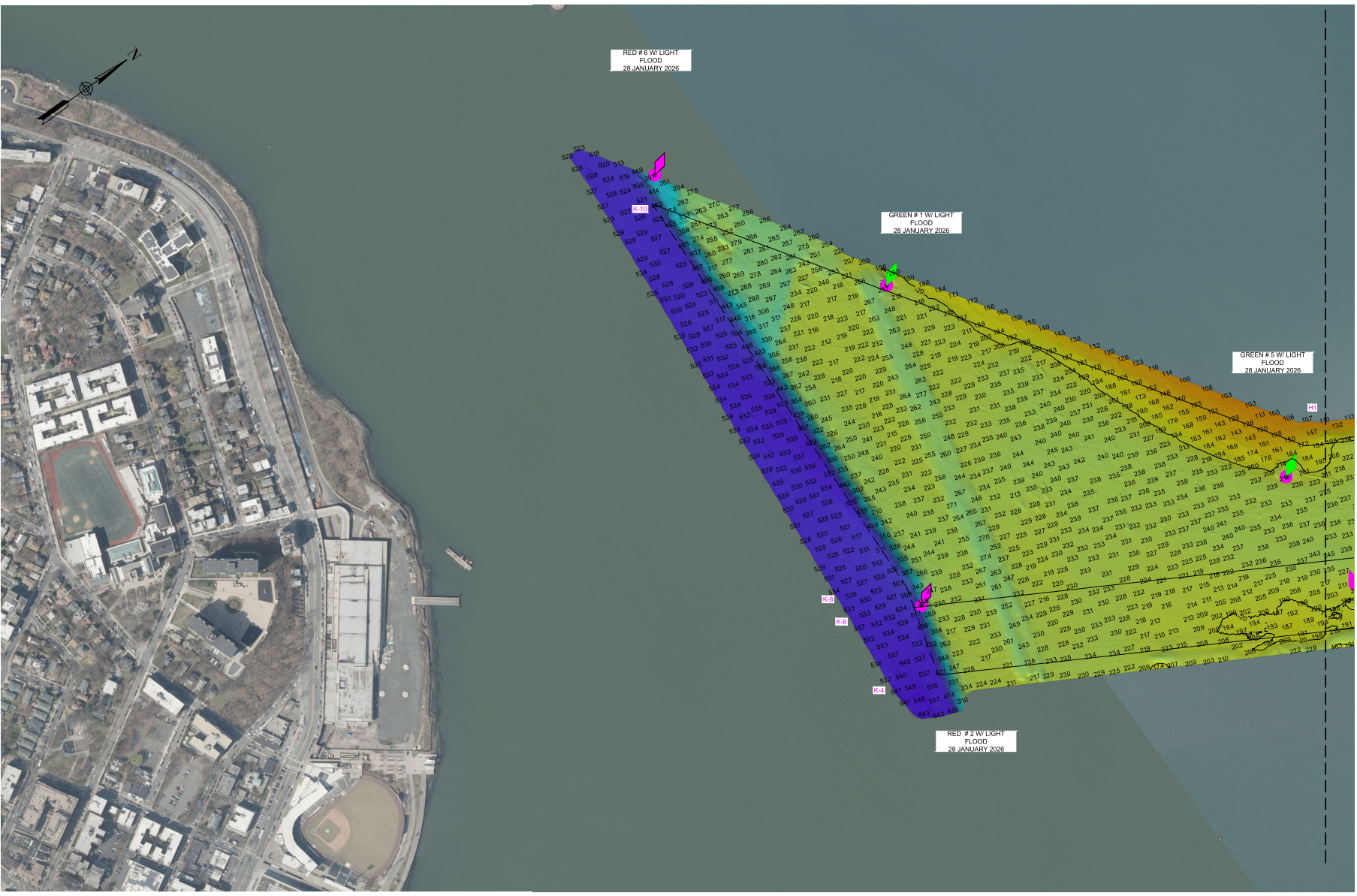
CHIEF OF SURVEY AND MAPPING BRANCH
SURVEYS AND MAPPING BRANCH
CENAN-OP-SS

NEW YORK HARBOR
CHANNEL ALONG NEW JERSEY PIERHEAD LINE
CONDITION SURVEY

VH-101
1 OF 6

1 2 3 4 5 6 7 8 9 10 11 12 13 14 15 16 17 18 19 20

P
N
M
L
K
J
H
G
F
E
D
C
B
A



RED # 6 W/LIGHT
FLOOD
28 JANUARY 2026

GREEN # 1 W/LIGHT
FLOOD
28 JANUARY 2026

GREEN # 5 W/LIGHT
FLOOD
28 JANUARY 2026

RED # 2 W/LIGHT
FLOOD
28 JANUARY 2026



US Army Corps of Engineers
 PPR: ESC/SCAL
 VSP: BR/PCALM

DATES OF SURVEY:
 28 JANUARY 2026
 31 JANUARY 2026
 3 MARCH 2026

SCALE:
 ONE INCH = 200 FEET

FIELD BOOKS:

REQUEST NUMBER: 60500202

APPROVED: P. BEARDS, J. BISCOTTI
 B. HUGHES
 P. BRADSHAW

APPROVED: _____

APPROVED: _____

ISSUE DATE: 11 MARCH 2026

U.S. ARMY CORPS OF ENGINEERS
 NEW YORK DISTRICT
 NEW YORK, NEW YORK 10278

CHIEF OF DISTRICT SURVEYS AND MAPPING BRANCH
 CEMAN-OP-55

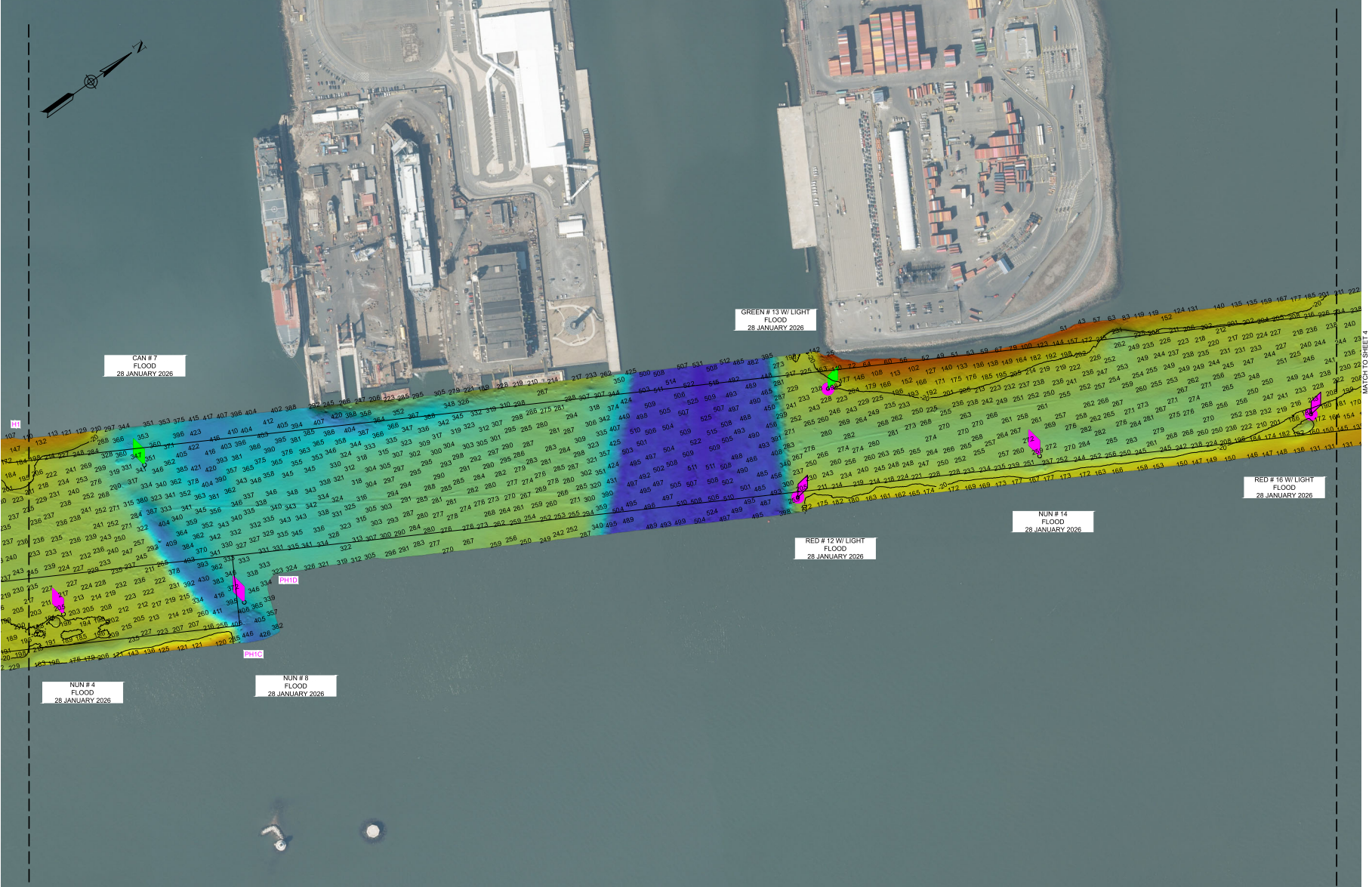
NEW YORK HARBOR
 CHANNEL ALONG NEW JERSEY PIERHEAD LINE
 CONDITION SURVEY

VH-102
 2 OF 6

*FOR PROJECT NOTES AND CONTROL REFER TO VH-101

1 2 3 4 5 6 7 8 9 10 11 12 13 14 15 16 17 18 19 20

P
N
M
L
K
J
H
G
F
E
D
C
B
A



DATE OF SURVEY:	28 JANUARY 2026
DATE OF REVISION:	3 MARCH 2026
PROJECT NUMBER:	6050002
PROJECT NAME:	NEW YORK HARBOR
PROJECT LOCATION:	NEW YORK HARBOR

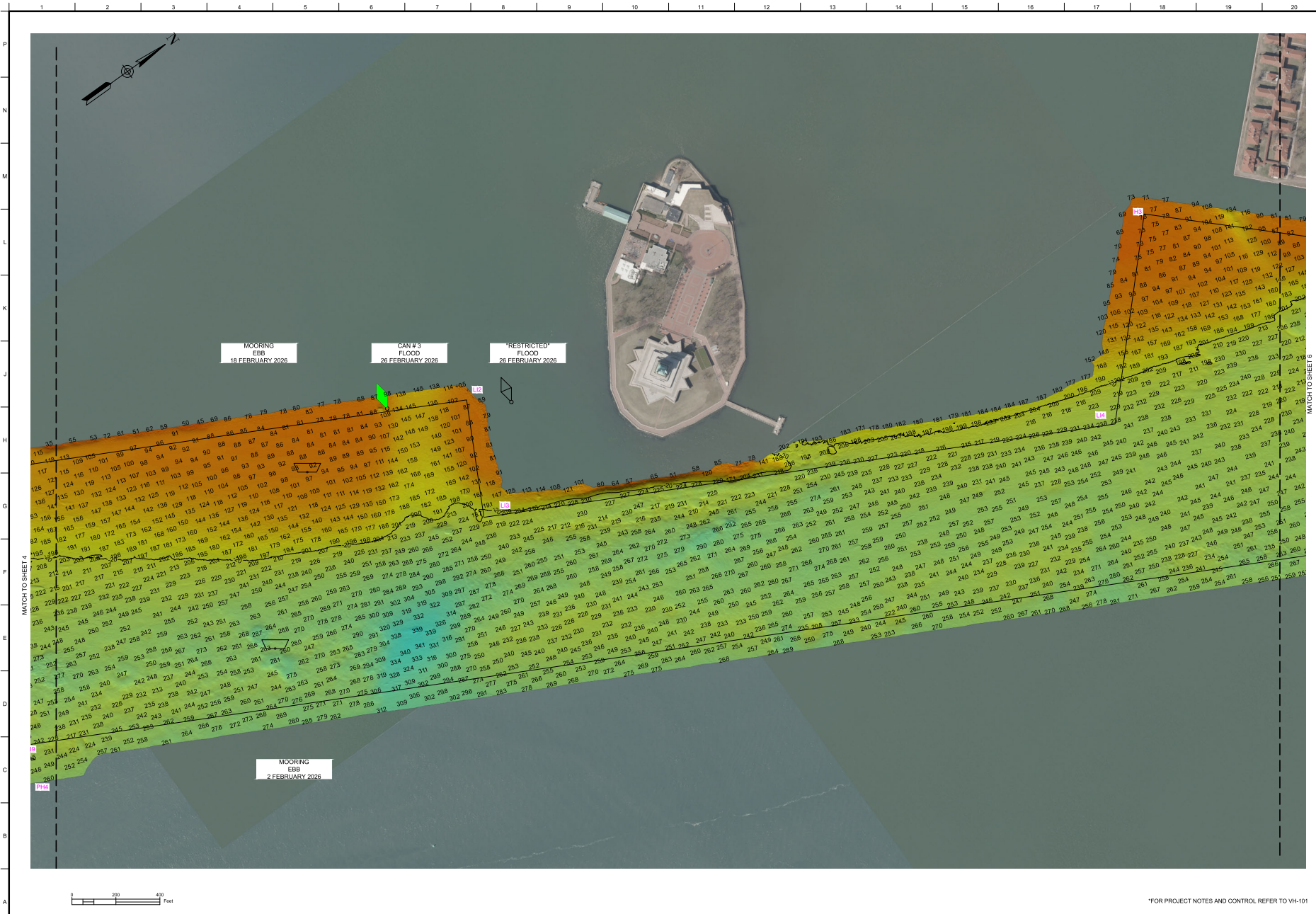
SCALE:	ONE INCH = 200 FEET
FIELD BOOKS:	
DATE OF SURVEY:	28 JANUARY 2026
DATE OF REVISION:	3 MARCH 2026
PROJECT NUMBER:	6050002
PROJECT NAME:	NEW YORK HARBOR
PROJECT LOCATION:	NEW YORK HARBOR

APPROVED BY:	J. P. HIGGINS
APPROVED BY:	P. BRADY
APPROVED BY:	C. HARRIS
APPROVED BY:	M. HARRIS
APPROVED BY:	M. HARRIS
ISSUE DATE:	11 MARCH 2026

U.S. ARMY CORPS OF ENGINEERS
NEW YORK DISTRICT
CIVIL ENGINE DIVISION
SURVEYS AND MAPPING BRANCH
CENAN-09-85

NEW YORK HARBOR
CHANNEL ALONG NEW JERSEY PIERHEAD LINE
CONDITION SURVEY

*FOR PROJECT NOTES AND CONTROL REFER TO VH-101



US Army Corps of Engineers
 PROJECT NUMBER: 6050002
 SHEET NUMBER: 11

DATES OF SURVEY:
 28 JANUARY 2026
 27 FEBRUARY 2026
 3 MARCH 2026

SCALE:
 ONE INCH = 200 FEET

FIELD BOOKS:

APPROVED: P. DEARNS, DISTRICT ENGINEER
 B. HIGGINS, DISTRICT ENGINEER
 P. BRADSHAW, DISTRICT ENGINEER
 CHIEF OF BUREAU OF HYDROGRAPHIC SURVEYS AND MAPPING BRANCH
 CHIEF OF DIVISION AND WATER BUREAU
 11 MARCH 2026

U.S. ARMY CORPS OF ENGINEERS
 NEW YORK DISTRICT
 NEW YORK, NEW YORK 10278

CIVIL ENGINE DIVISION
 SURVEYS AND MAPPING BRANCH
 CEMAN-OP-55

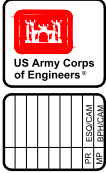
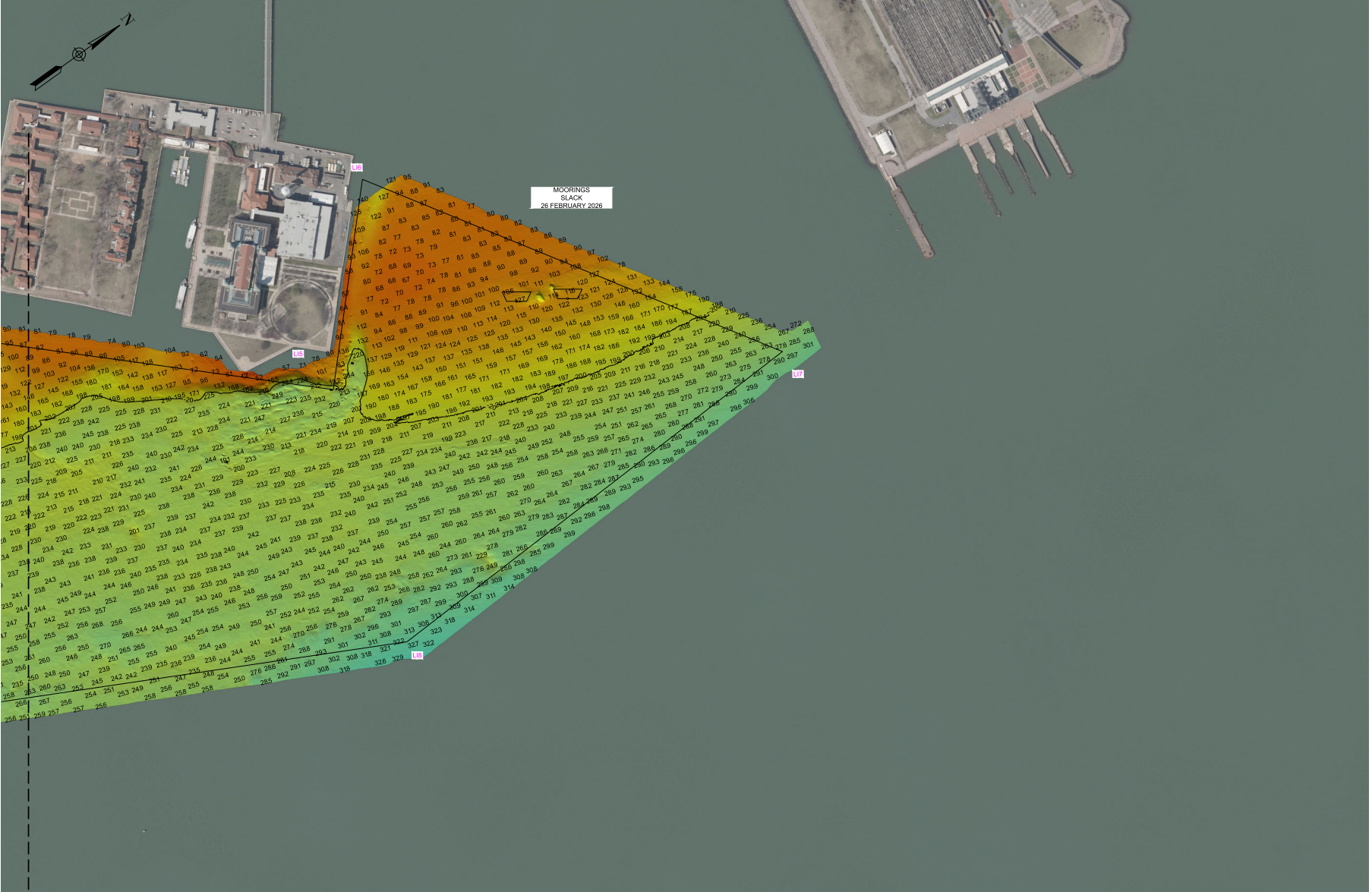
NEW YORK HARBOR
 CHANNEL ALONG NEW JERSEY PIERHEAD LINE
 CONDITION SURVEY

VH-105
 5 OF 6

*FOR PROJECT NOTES AND CONTROL REFER TO VH-101

1 2 3 4 5 6 7 8 9 10 11 12 13 14 15 16 17 18 19 20

P
N
M
L
K
J
H
G
F
E
D
C
B
A



DATES OF SURVEY:
28 JANUARY 2026
29 JANUARY 2026
30 JANUARY 2026
31 JANUARY 2026
1 FEBRUARY 2026
2 FEBRUARY 2026
3 FEBRUARY 2026

SCALE:
ONE INCH = 200 FEET

FIELD BOOKS:

APPROVED: P. BEARDS, J. BUSTOZZI
NEW YORK DISTRICT
B. HIGGINS, ENGINEER
APPROVED: P. BRADSHAW, ENGINEER
APPROVED: CHIEF OF BRANCH / PORT/PIERHEAD SURVEYS AND MAPPING BRANCH
APPROVED: CHIEF OF BRANCH / NEW YORK DISTRICT
ISSUE DATE: 11 MARCH 2026

U.S. ARMY CORPS OF ENGINEERS
NEW YORK DISTRICT
NEW YORK, NEW YORK 10278

CIVIL ENGINE DIVISION
SURVEYS AND MAPPING BRANCH
CEMAN-OP-85

NEW YORK HARBOR
CHANNEL ALONG NEW JERSEY PIERHEAD LINE
CONDITION SURVEY

VH-106
6 OF 6

*FOR PROJECT NOTES AND CONTROL REFER TO VH-101