

SANDY HOOK TO BARNEGAT INLET, SEA BRIGHT TO MANASQUAN, NEW JERSEY

COASTAL STORM RISK MANAGEMENT GENERAL REEVALUATION STUDY

PUBLIC INFORMATION SESSION

U.S. Army Corps of Engineers, New York District
New Jersey Department of Environmental Protection

20 November 2023



U.S. ARMY



US Army Corps
of Engineers®



The views, opinions and findings contained in this report are those of the author(s) and should not be construed as an official Department of the Army position, policy or decision, unless so designated by other official documentation.



November 2022 Site Visit



November 2022 Site Visit



U.S. ARMY

THANK YOU FOR PARTICIPATING!

2



Public feedback is an important part of the study process.

The Study Team appreciates your time today.

MEETING PURPOSE

1. Provide information about the Sandy Hook to Barnegat Inlet, Sea Bright to Manasquan, New Jersey, Coastal Storm Risk Management General Reevaluation Study.
2. Provide an overview of the study area and measures to be considered.
3. Hear your questions and feedback about the information shared today to inform alternative development.

- Welcome/sign-in

- Presentation by study team
 - Background and Existing Project
 - Plan Formulation Process
 - Potential Measures
 - Project Schedule

- Question & Answer Session



U.S. ARMY

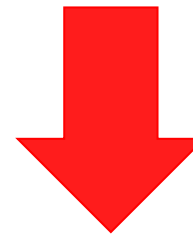
ASKING QUESTIONS AND PROVIDING COMMENTS



4


- Submit your questions and comments through the chat
 - Send to “Everyone” (all participants)
 - The Study Team will provide answers during the presentation and the Q&A Session
- There will be an opportunity for you to ask questions and share comments during the Q&A Session if time allows
 - We will use the Raise Hand function and you will be able to unmute

**Raise
Hand**




Chat



 Unmute ▾

 Start video ▾

 Share



 Participants

 Chat





U.S. ARMY



BACKGROUND AND EXISTING PROJECT



U.S. ARMY

STUDY AUTHORIZATION AND BACKGROUND



Report and Project Authorization

Project report recommending Federal action was submitted to Congress in 1956. The original construction project was authorized under the River and Harbor Act of July 3, 1958, in accordance with House Document No. 332, 85th Congress, second session, as modified by Section 854 of the Water Resources Development Act of 1986 (PL 99-662) and further modified by Section 4 of the Water Resources Development Act of 1988 (PL 100-676) and Section 102 (r) of the Water Resources Development Act of 1992 (PL 102-580).

Construction Completion

Section I: 1999
Section II: 2000
Elberon to Loch Arbour: 2016

Construction of the project was initiated in 1994 and completed in 2000 (with the exception of Elberon, Deal, Allenhurst, and Loch Arbour, which was completed in 2016). The project is periodically renourished.

New Jersey Department of Environmental Protection Requests Reevaluation of Sections I and II 2015-2021

Original Request – 2015, utilizing Sandy funds, funding was not received
Follow Up Request – March 2021

New Study 2022

USACE and the New Jersey Department of Environmental Protection signed the Feasibility Cost Sharing Agreement on 18 October 2022.

Study authority is Section 216 of the Rivers and Harbors Act of 1970 (33 USC 549a).

100% Federally funded under Disaster Relief Supplemental Appropriations Act, 2022, Public Law 117-43.



U.S. ARMY

EXISTING PROJECT

7



- Sea Bright to Manasquan Inlet, Monmouth County, NJ.
- 21 miles shoreline.
 - Section I: 12 miles from Sea Bright to Loch Arbour (formally Ocean Township)
 - Section II: 9 miles from Asbury Park to Manasquan Inlet
- Beach erosion control, coastal flood risk reduction.
 - 100-ft-wide berm, +9.3 ft NAVD88 (+12 ft mean low water).
 - 6-year renourishment cycle, 50-year period (through 2047 & 2049).



Grading sand to develop berm



Recent beach nourishment (hydraulic placement of dredged material)



STUDY SCOPE AND PURPOSE

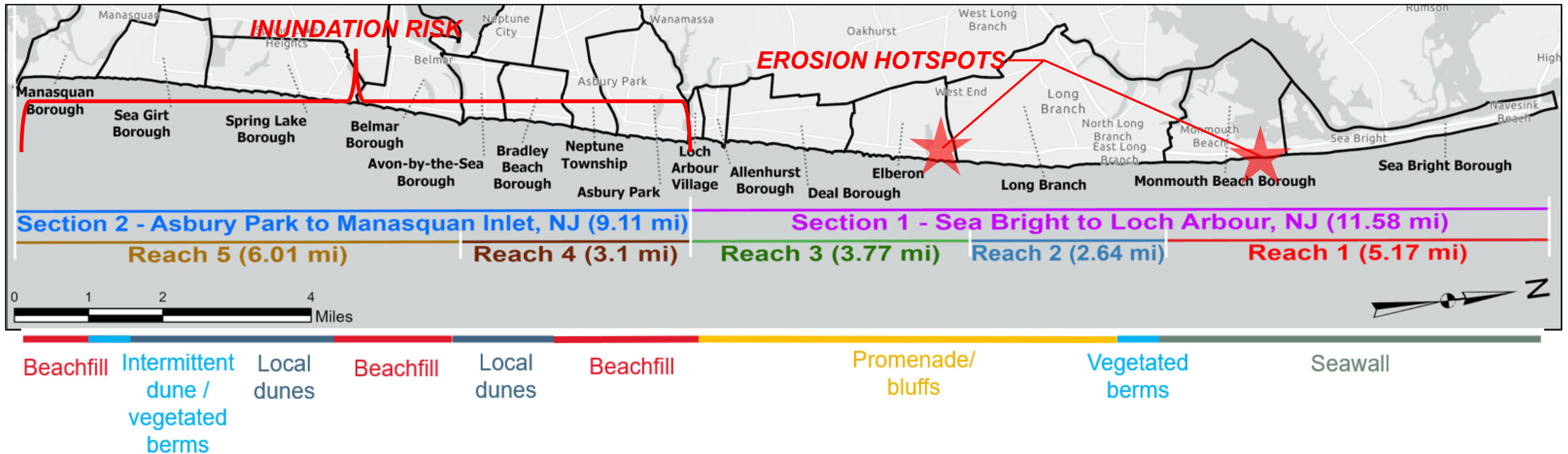
U.S. ARMY



The existing project provides beach erosion control, and coastal flood risk reduction for the highly populated communities and infrastructure along 21-miles of Atlantic coastline in Monmouth County.

While the project performs as designed, there are opportunities for improvement. This study aims to investigate and determine if there is a technically feasible, environmentally acceptable, and economically justifiable recommendation for federal participation to improve the existing project.

The study focuses on erosion hotspots in Elberon and Monmouth Beach in Section I, and inundation risk in Section II.





U.S. ARMY



PLAN FORMULATION PROCESS



USACE PLAN FORMULATION PROCESS



- Identify water resource problems, opportunities, objectives, constraints, and considerations
- Inventory and forecast conditions
- Formulate alternative plans
 - Identify potential measures
 - Screen potential measures
 - Combine measures into alternatives
- Evaluate effects of alternative plans
 - Screen alternatives for ***completeness, effectiveness, efficiency, and acceptability.***
 - Compare alternatives against a future without project condition.
 - Assess environmental impacts, perform economic analysis (Benefit-to-cost ratio; BCR > 1.0).
- Compare alternatives
- Select an alternative





U.S. ARMY

PROBLEMS: EROSION HOTSPOTS





U.S. ARMY

PROBLEMS: EROSION HOTSPOTS



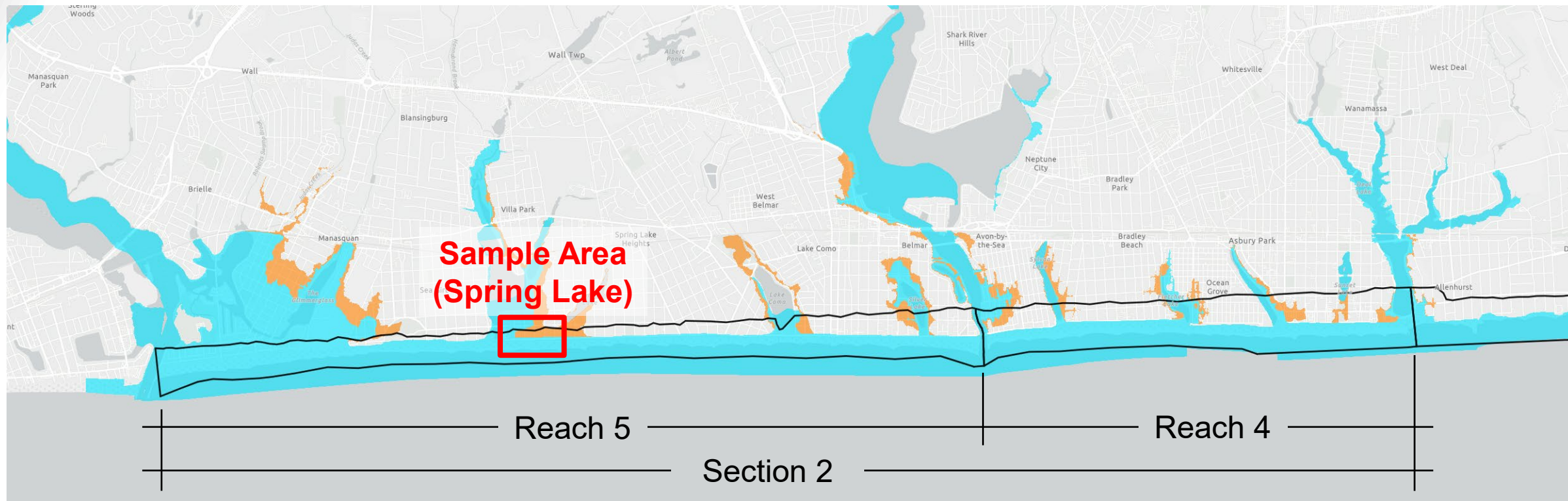


U.S. ARMY



PROBLEMS: INUNDATION



Current FEMA-designated floodplain in Section 2 (reaches 4 and 5) from Asbury Park to Manasquan Inlet



Legend

-  FEMA 1-100-year flood hazard zone
-  FEMA 1-200-year hazard zone



U.S. ARMY

PROBLEM: INUNDATION RISK (SECTION II)

Spring Lake

2010 (September)





U.S. ARMY

PROBLEM: INUNDATION RISK (SECTION II)

Spring Lake

2012 (November)





FUTURE WITHOUT-PROJECT CONDITION

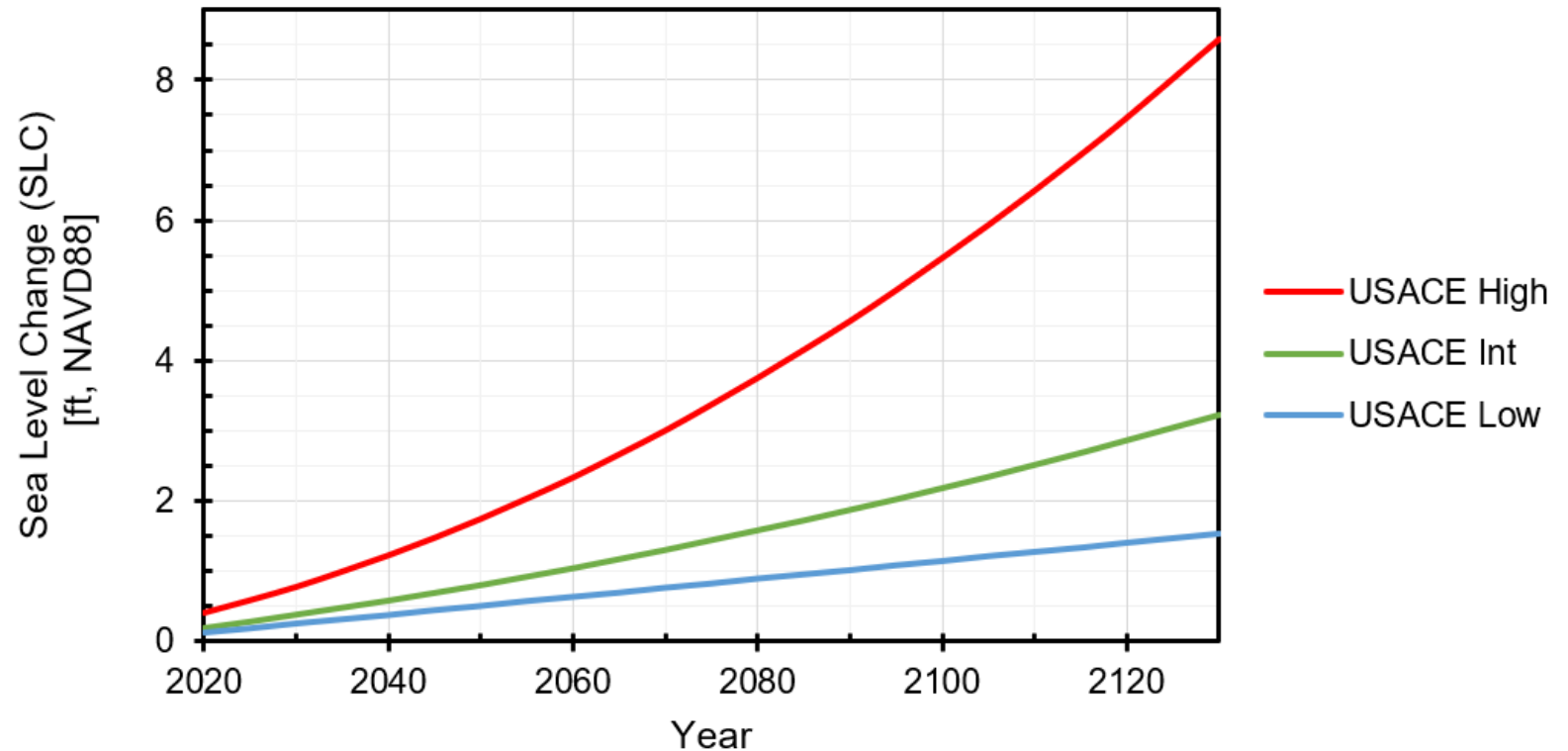


With projected future increases in sea levels:

- Erosion at hotspots anticipated to accelerate.
- Inundation risk anticipated to increase.

The existing project is authorized to be nourished periodically until 2047.

Sea level change (SLC) projections over time at Sandy Point, NJ (NOAA Station ID 8531680)



Note: under the current National Tidal Datum Epoch (NTDE; 1983-2001) mean sea level (MSL) = 0.24 ft NAVD88



PROBLEMS, OPPORTUNITIES, OBJECTIVES, CONSTRAINTS, AND CONSIDERATIONS



PROBLEMS

- Risk to human life, health, and safety from coastal storms
- High renourishment costs and risk to performance of existing CSRMs features (due to high erosion rates at hot spots in Section I)
- Storm damages due to erosion, inundation, and waves in Section II

OPPORTUNITIES

- Better manage system and consider regional interactions
- Update the project for the latest technology, engineering standards, and guidance
- Benefit the environment
- Improve recreation

OBJECTIVES

- In the study area through the period of analysis:
- Manage the direct and indirect risks to human life, health, and safety caused by coastal storms
 - Manage structure damage and other national economic development impacts caused by coastal storms, including flooding and erosion

CONSTRAINTS

- Cannot increase erosion rates

CONSIDERATIONS

- Cannot reduce public access
- Impacts to historically disadvantaged communities
- Impacts to structures and on-land facilities
- Impacts to environmental and cultural/historic resources
- Impacts to existing utilities
- Induced flooding



U.S. ARMY

NATIONAL ENVIRONMENTAL POLICY ACT (NEPA)

18



Multiple laws, executive orders and regulations are considered as part of the NEPA process.

- National Historic Preservation Act, as amended
 - Preserves historic and archaeological sites
- Clean Water Act
 - Prevents water pollution
- Endangered Species Act
 - Protects plants and animals from extinction
- Clean Air Act
 - Prevents air pollution
- Environmental Justice
 - Addressing the disproportionately high adverse environmental effects on minority and low-income populations as well as disproportionate concentration of environmental goods, like parks or open space, in affluent or mostly white communities
- State laws



TYPES OF NEPA ANALYSIS



Council on Environmental Quality (CEQ) regulations provide three types of NEPA analysis based upon potential for significant impact:

- Categorical Exclusion
- Environmental Assessment (EA)
- Environmental Impact Statement (EIS)
- Tiered Environmental Impact Statement (EIS)



The level of NEPA analysis will be determined once a Tentatively Selected Plan is identified.



U.S. ARMY

COORDINATION WITH OTHER AGENCIES

20



- Non-federal sponsor:
 - New Jersey Department of Environmental Protection (NJDEP)

- Cooperating agencies:
 - Bureau of Ocean Energy Management (BOEM)
 - U.S. Fish and Wildlife Service (USFWS)
 - National Marine Fisheries Service (NMFS)
 - Environmental Protection Agency (EPA)



ENDANGERED SPECIES ACT



Federally Listed Threatened and Endangered Species (IPAC ACCESSED 07 NOV 2023)

ENDANGERED

- Northern Long-eared Bat (*Myotis septentrionalis*)
- Roseate Tern (*Sterna dougalli dougalli*)
- Tricolored Bat (*Perimyotis subflavus*) (**PROPOSED**)

THREATENED

- Piping Plover (*Charadrius melodus*)
- Red Knot (*Calidris canutus rufa*)
- Northeastern Beach Tiger Beetle
(*Habroscelimorpha dorsalis dorsalis*)
- Seabeach Amaranth (*Amaranthus pumilus*)

CANDIDATE

- Monarch Butterfly (*Danaus plexippus*)



Federally Listed Threatened and Endangered Species (SECTION 7 MAPPER ACCESSED 07 NOV 2023)

ENDANGERED

- Atlantic Sturgeon (*Acipenser oxyrinchus oxyrinchus*)
- North Atlantic Right Whale (*Eubalaena glacialis*)
- Fin Whale (*Balaenoptera physalus*)
- Leatherback Sea Turtle (*Dermochelys coriacea*)
- Kemp's Ridley Sea Turtle (*Lepidochelys kempii*)

THREATENED

- Green Sea Turtle (*Chelonia mydas*)
- Loggerhead Sea Turtle (*Caretta caretta*)





ENVIRONMENTAL COORDINATION TO DATE



- Interagency Meeting held on 17 January 2023; presentation and MFR was distributed on 23 January 2023
- Cooperating Agency Letters were sent on 25 January 2023 (30-day reply period)
 - USFWS (Accepted on 31 January 2023)
 - NMFS (Accepted on 07 February 2023)
 - USEPA (Accepted on 28 February 2023)
 - BOEM (Accepted on 06 Feb 2023)
- Obtained official species lists from Section 7 Mapper (NMFS) and IPAC (USFWS)
- NJ Heritage Species List obtained 10 February 2023
- Programmatic Agreement Update Executed in 2022. Consultation letters sent to NJHPO, Delaware Tribe, Delaware Nation, Shawnee Tribe
- Prepare draft Biological Assessment Consultation and begin early coordination with NMFS
- Prepared a Communication Plan



U.S. ARMY

UPCOMING ENVIRONMENTAL TASKS TO THE TSP

23



- Refine FWOP conditions & participate in alternative development, screening, and selection
- Continue to seek public input and outreach while continuing resource agency and tribal coordination
- Preliminary environmental impact assessment / identify preliminary avoidance, minimization measures or mitigation (if applicable)
- Prepare draft Essential Fish Habitat (EFH) Assessment
- Refine APE and initiate Section 106 National Historic Preservation Act (NHPA) consultation; prepare admin draft MOA or PA
- Coordinate Coastal Zone Management Act compliance path forward; prepare draft Consistency Determination or coordinate letter of deferral
- Coordinate Clean Water Act Section 401 compliance path forward
- Prepare draft 404(b)1 Analysis
- Initiate HTRW Phase I Assessment (if applicable)
- Clean Air Act and Greenhouse Gas



U.S. ARMY



POTENTIAL MEASURES

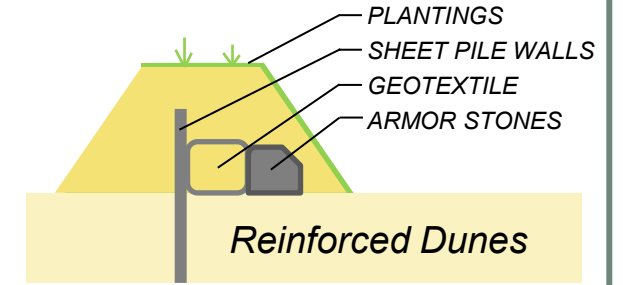
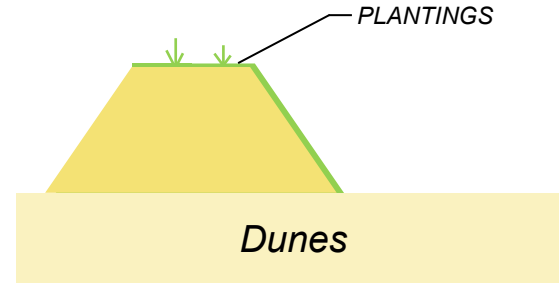
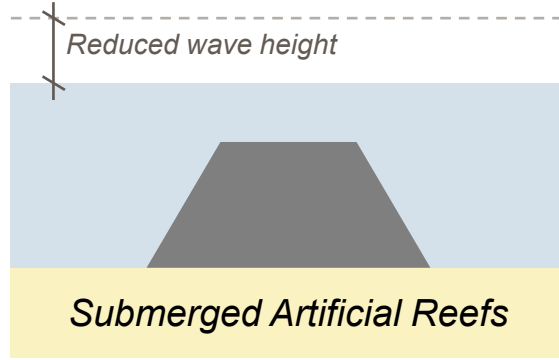
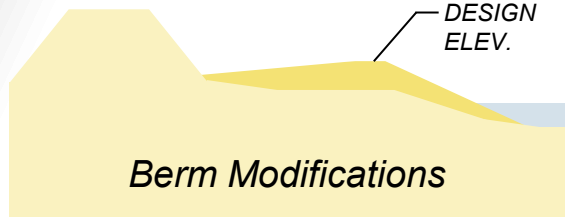


MEASURES BEING CONSIDERED



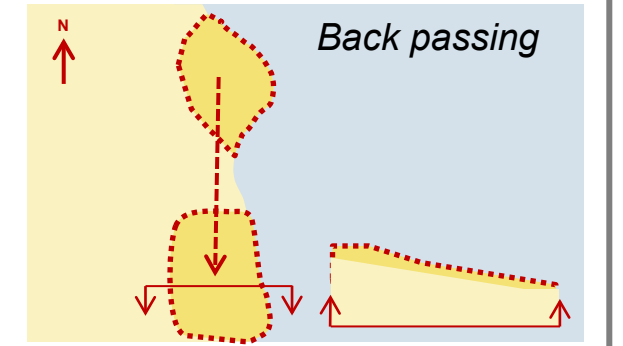
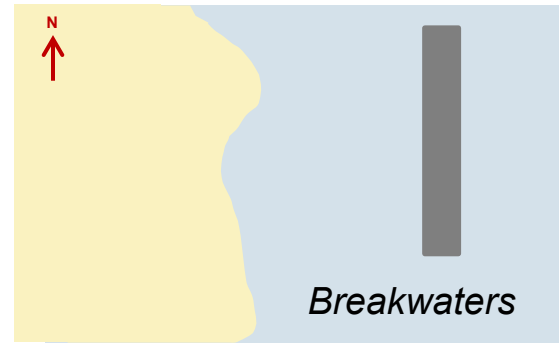
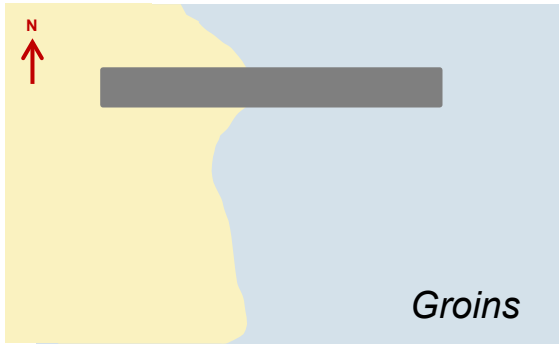
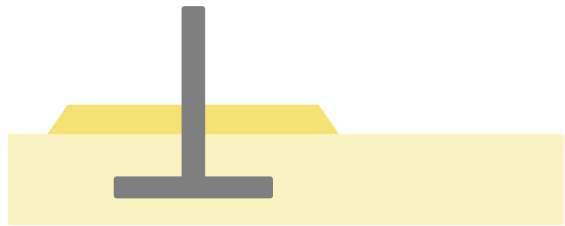
U.S. ARMY

Nature-Based Solutions

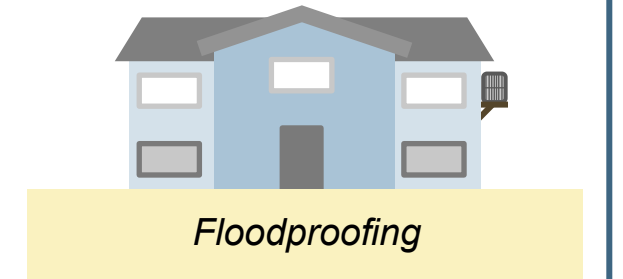
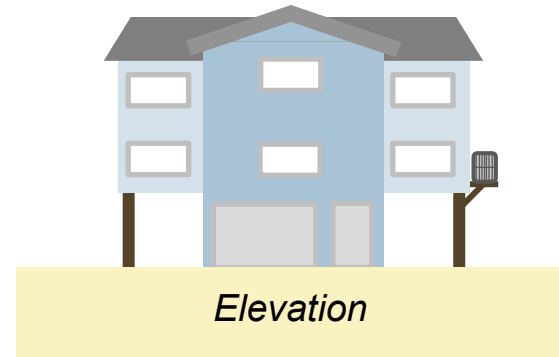


Structural

Floodwalls/Seawalls



Nonstructural





MEASURES BEING CONSIDERED



Section I - Erosion Risk: Monmouth Beach & Elberon

Nature-Based Solutions

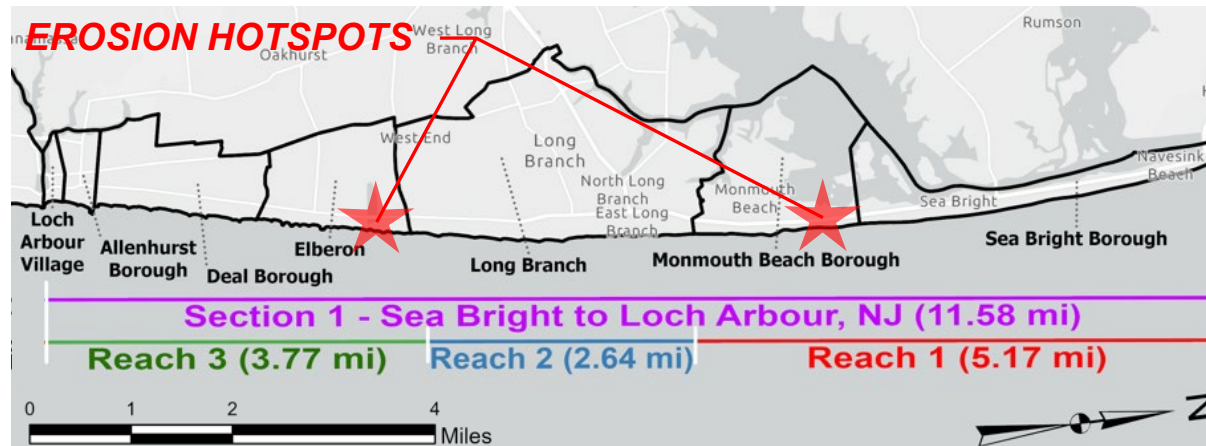
- Berm Modifications
- Submerged Artificial Reefs

Structural

- Groins (new or modified)
- Breakwaters
- Sand Back passing (Monmouth)
- ~~Revetment~~

Nonstructural

- Acquisition
- Relocation
- ~~Elevation~~
- ~~Floodproofing~~



Measures screened based on environmental acceptability, technical feasibility, economic justification, other social effects, ability to meet objectives, avoid constraints.



MEASURES BEING CONSIDERED



Section II - Inundation Risk: Asbury Park to Manasquan

Nature-Based Solutions

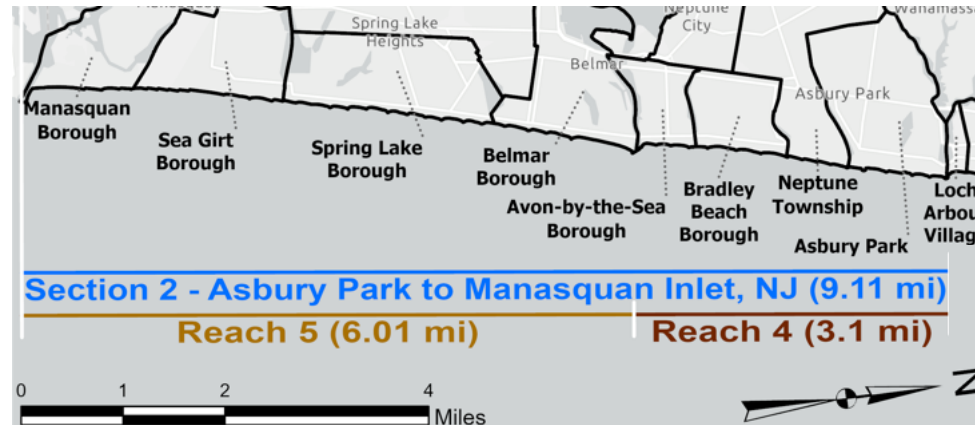
- Berm Modifications
- Dunes
- Reinforced Dunes
- ~~Levees~~

Structural

- Floodwalls/Seawalls

Nonstructural

- Acquisition
- Relocation
- Elevation
- Floodproofing



Measures screened based on environmental acceptability, technical feasibility, economic justification, other social effects, ability to meet objectives, avoid constraints.



U.S. ARMY



PROJECT SCHEDULE



STUDY SCHEDULE

U.S. ARMY



Public Engagement



U.S. ARMY



THANK YOU

Send additional questions or comments to: seabrightmanasquan@usace.army.mil

Jason Shea, Project Manager

Katie Pijanowski, NEPA Lead

More Opportunities to Provide Feedback

- There will be public information meetings during the public comment period of the draft integrated report
- Meeting information will be posted to the study website and shared via email



Project Website

<https://www.nan.usace.army.mil/Missions/Civil-Works/Projects-in-New-Jersey/Sandy-Hook-to-Barnegat-Inlet/Seabright-to-Manasquan-General-Reevaluation-Report-Feasibility-Study/>



U.S. ARMY

Q&A SESSION

31



The Study Team will answer all open questions from the chat box first, then, if time allows, open the microphone to participants to verbally ask questions and provide feedback.

Ground Rules

- Be respectful of participants and the Study Team
- If there is time for verbal questions & answers following the responses to the questions and comments provided in the chat box, please raise your hand (see raised hand icon button in the bottom center of Webex screen)
- We will then recognize individuals to ask one question (please) to allow time for others to ask their questions



THANK YOU

