

LEGEND

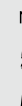
- Audi Sub-division Retention
- West Point Acquisition (From Tax ID: 207-3-2)
- Private Property
- Stone Wall
- West Point Property

Sources:

Background Map:
Sources: Esri, HERE, Garmin, Intermap, increment P Corp., GEBCO, USGS, FAO, NPS, NRCAN, GeoBase, IGN, Kadaster NL, Ordnance Survey, Esri Japan, METI, Esri China (Hong Kong), (c) OpenStreetMap contributors, and the GIS User Community

Reference Map:
Esri, HERE, Garmin, USGS, Intermap, INCREMENT P, NRCan, Esri Japan, METI, Esri China (Hong Kong), Esri Korea, Esri (Thailand), NGCC, © OpenStreetMap contributors, and the GIS User Community

Coordinate System:
NAD 1983 StatePlane New York East FIPS 3101 Feet



0 1,500 3,000 Feet

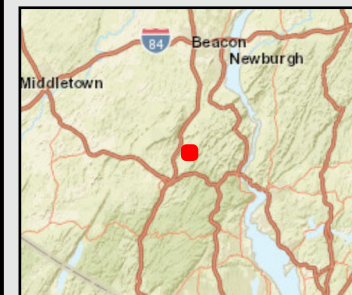
**West Point
Audi Land
Environmental Assessment**

**Figure 1:
Site Location Map**

Date: 8/24/2020



U.S. ARMY CORPS OF ENGINEERS
NEW YORK DISTRICT



LEGEND

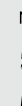
- Audi Sub-division Retention
- West Point Acquisition (From Tax ID: 207-3-2)
- Private Property
- Stone Wall
- West Point Property

Sources:

Imagery Background:
Esri, DigitalGlobe, GeoEye, Earthstar Geographics, CNES/Airbus DS, USDA, USGS, AeroGRID, IGN, and the GIS User Community

Reference Map:
Esri, HERE, Garmin, USGS, Intermap, INCREMENT P, NRCan, Esri Japan, METI, Esri China (Hong Kong), Esri Korea, Esri (Thailand), NGCC, © OpenStreetMap contributors, and the GIS User Community

Coordinate System:
NAD 1983 StatePlane New York East FIPS 3101 Feet



0 350 700 Feet

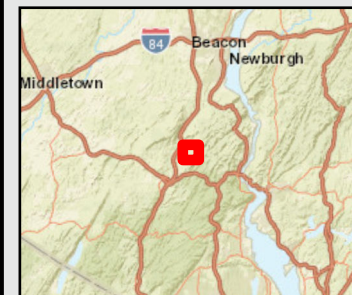
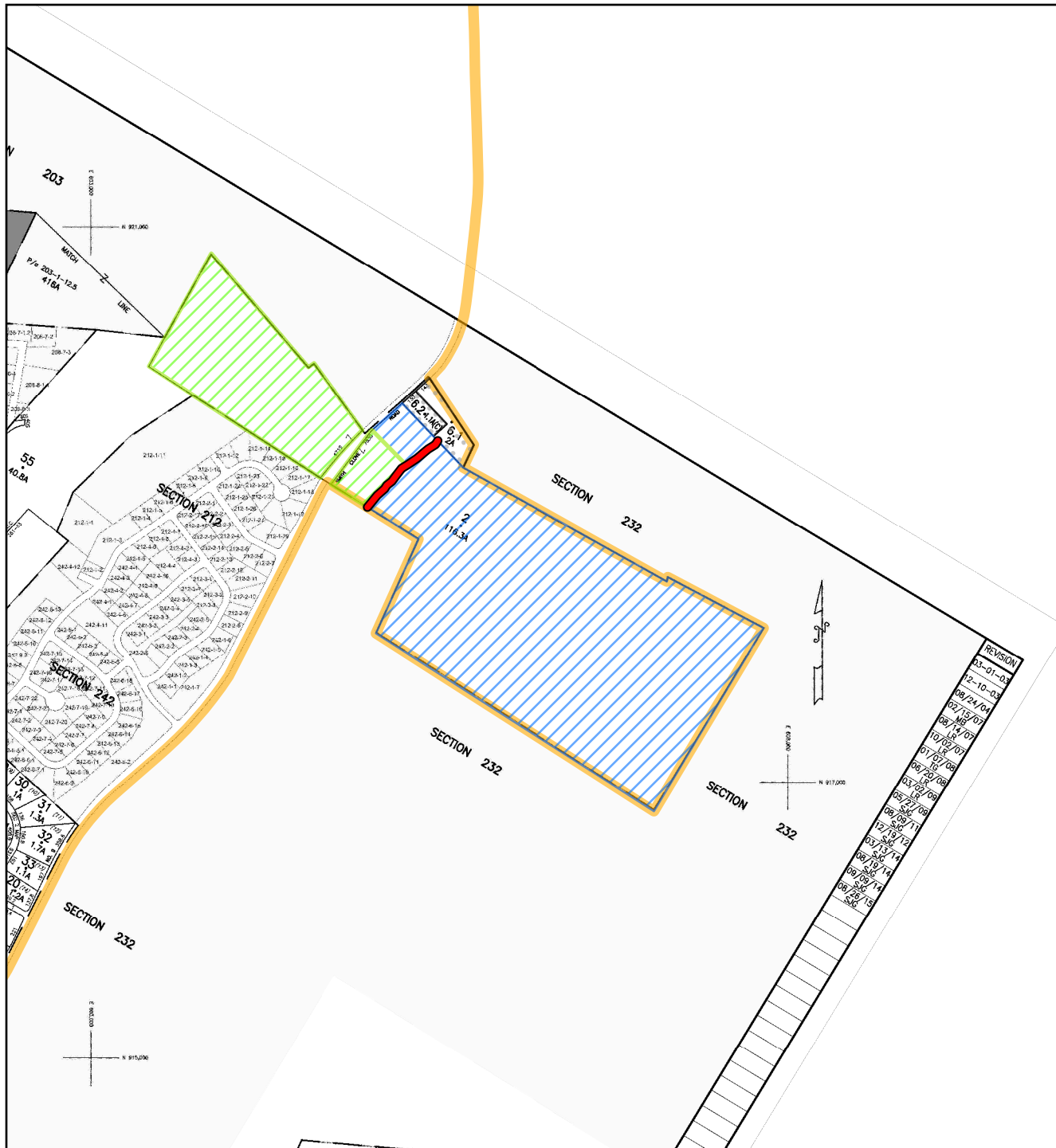
**West Point
Audi Land
Environmental Assessment**

Figure 2: Site Plan

Date: 8/24/2020



U.S. ARMY CORPS OF ENGINEERS
NEW YORK DISTRICT



LEGEND

- Audi Sub-division Retention
- West Point Acquisition (From Tax ID: 207-3-2)
- Private Property
- Stone Wall
- West Point Property

Tax Map (From Orange County Assessor)

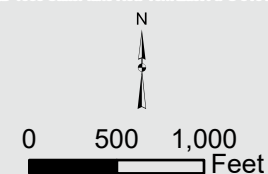


Sources:

Reference Map:
Esri, HERE, Garmin, USGS, Intermap, INCREMENT P, NRCan, Esri Japan, METI, Esri China (Hong Kong), Esri Korea, Esri (Thailand), NGCC, © OpenStreetMap contributors, and the GIS User Community

Tax Map:
Acquired from Orange County Tax Assessor

Coordinate System:
NAD 1983 StatePlane New York East FIPS 3101 Feet



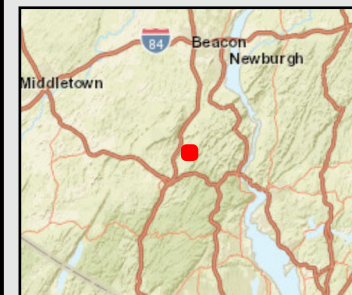
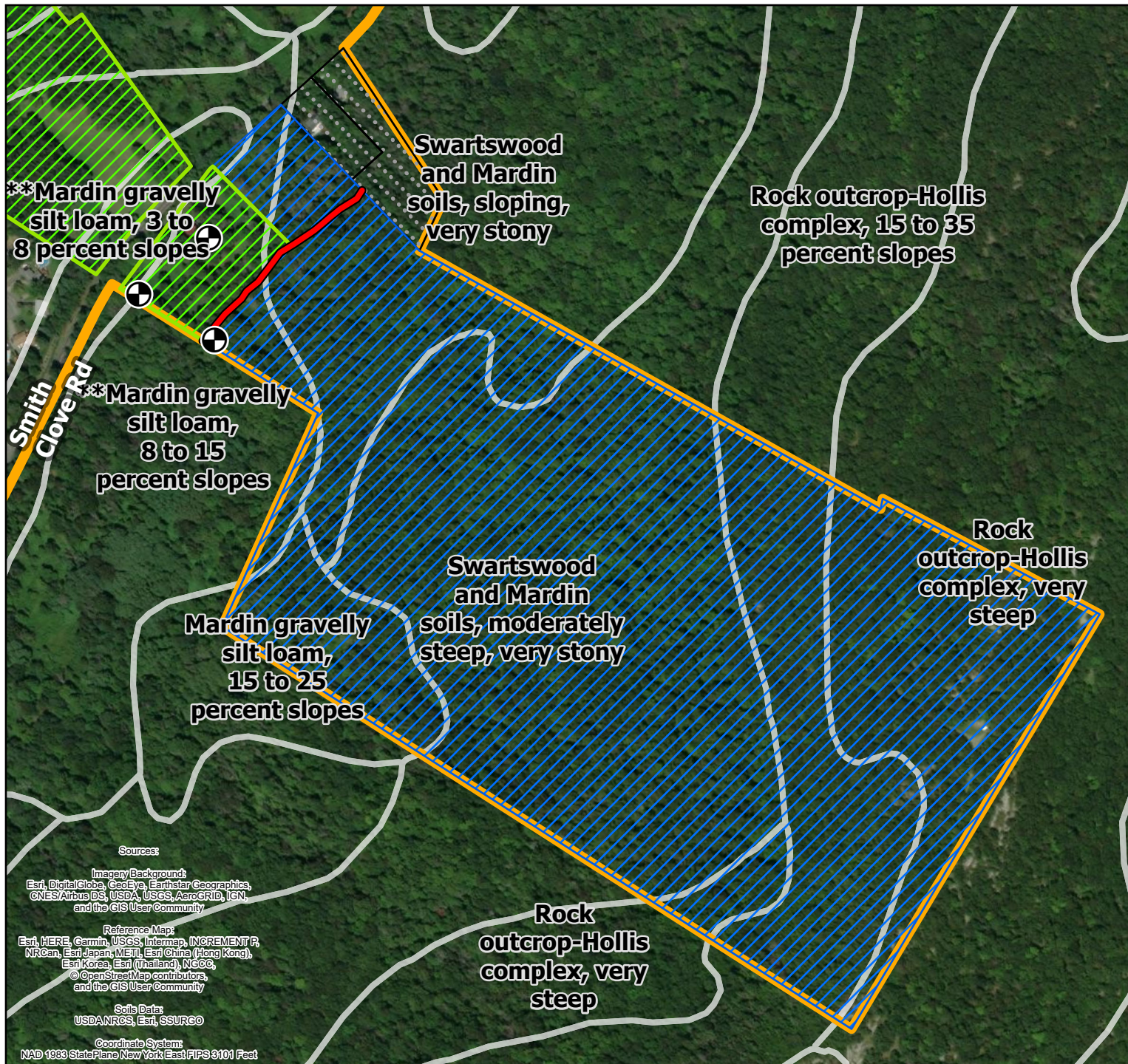
**West Point
Audi Land
Environmental Assessment**

Figure 3: Tax Map

Date: 8/24/2020



U.S. ARMY CORPS OF ENGINEERS
NEW YORK DISTRICT



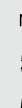
LEGEND

- Audi Sub-division Retention
- West Point Acquisition (From Tax ID: 207-3-2)
- Private Property
- Stone Wall
- Gravity Wells / Drinking Water Wells

USA Soils Map Units (20200604)

- USDA Soil Survey
- West Point Property

****Farmland of State Significance - Mardin soils with 3 to 8%, and 8 to 15% slopes**



0 350 700 Feet

**West Point
Audi Land
Environmental Assessment**

Figure 4: Soil Survey Map

Date: 8/24/2020



U.S. ARMY CORPS OF ENGINEERS
NEW YORK DISTRICT

Sources

Imagery Background:
Esri, DigitalGlobe, GeoEye, Earthstar Geographics,
CNES/Airbus DS, USDA, USGS, AeroGRID, IGN,
and the GIS User Community

Reference Map:

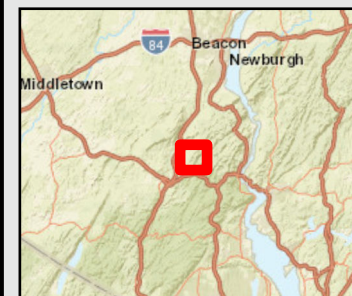
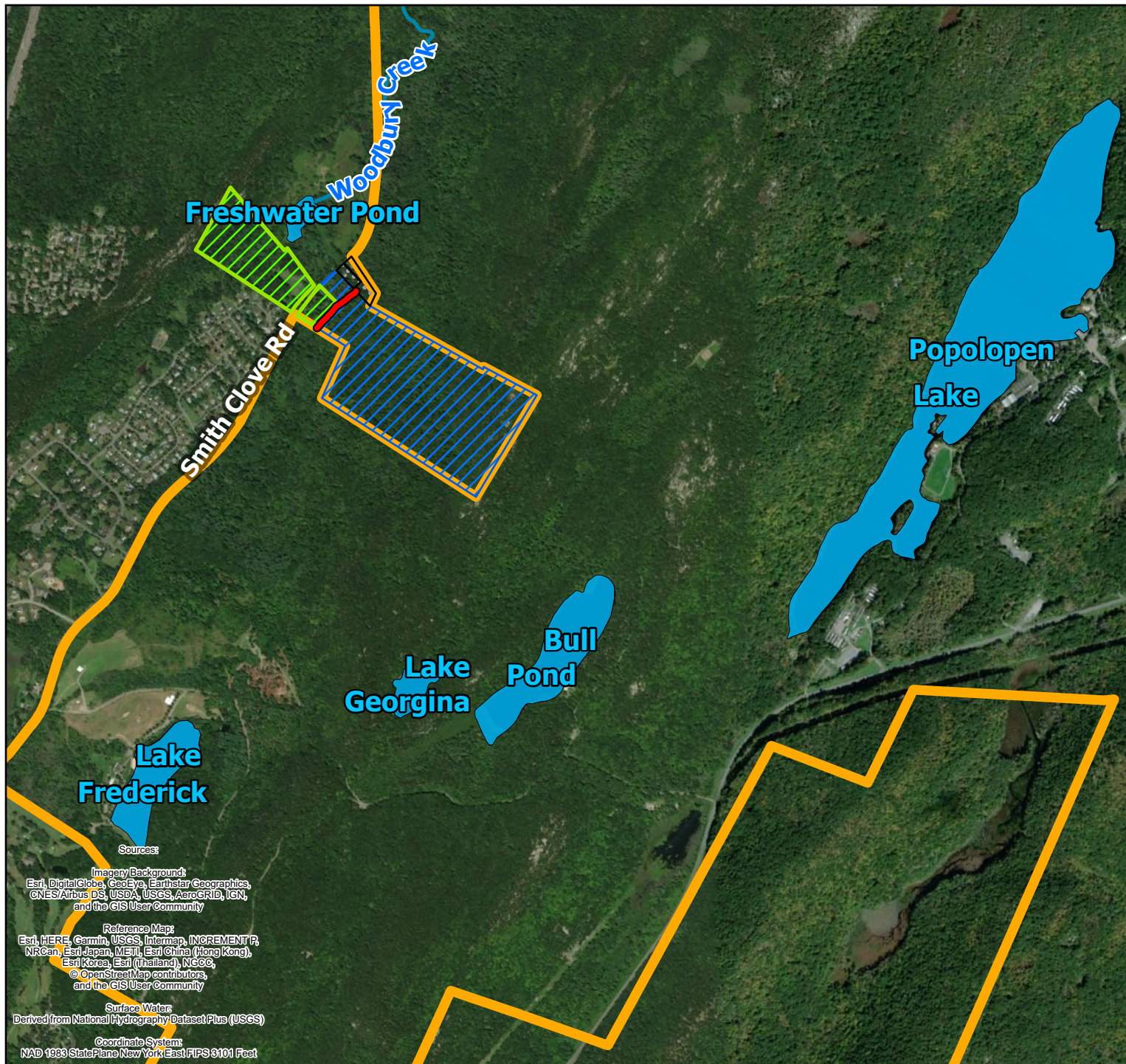
Esri, HERE, Garmin, USGS, Intermap, INCREMENT P,
NRCan, Esri Japan, METI, Esri China (Hong Kong),
Esri Korea, Esri (Thailand), NGCC,
© OpenStreetMap contributors,
and the GIS User Community

Soils Data:








USDANRCS, Esri, SSURGO

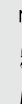
Coordinate System:

NAD 1983 StatePlane New York East FIPS 3101 Feet



LEGEND

-  Audi Sub-division Retention
-  West Point Acquisition (From Tax ID: 207-3-2)
-  Private Property
-  Stone Wall
-  Surface Water Boundary
-  Woodbury Creek
-  West Point Property



0 1,250 2,500 Feet

**West Point
Audi Land
Environmental Assessment**

**Figure 5:
Surface Water
Location Map**
Date: 8/24/2020



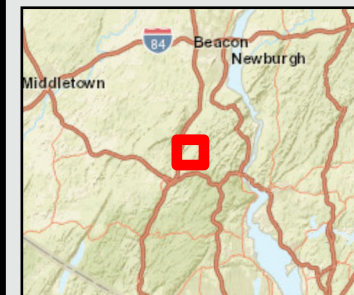
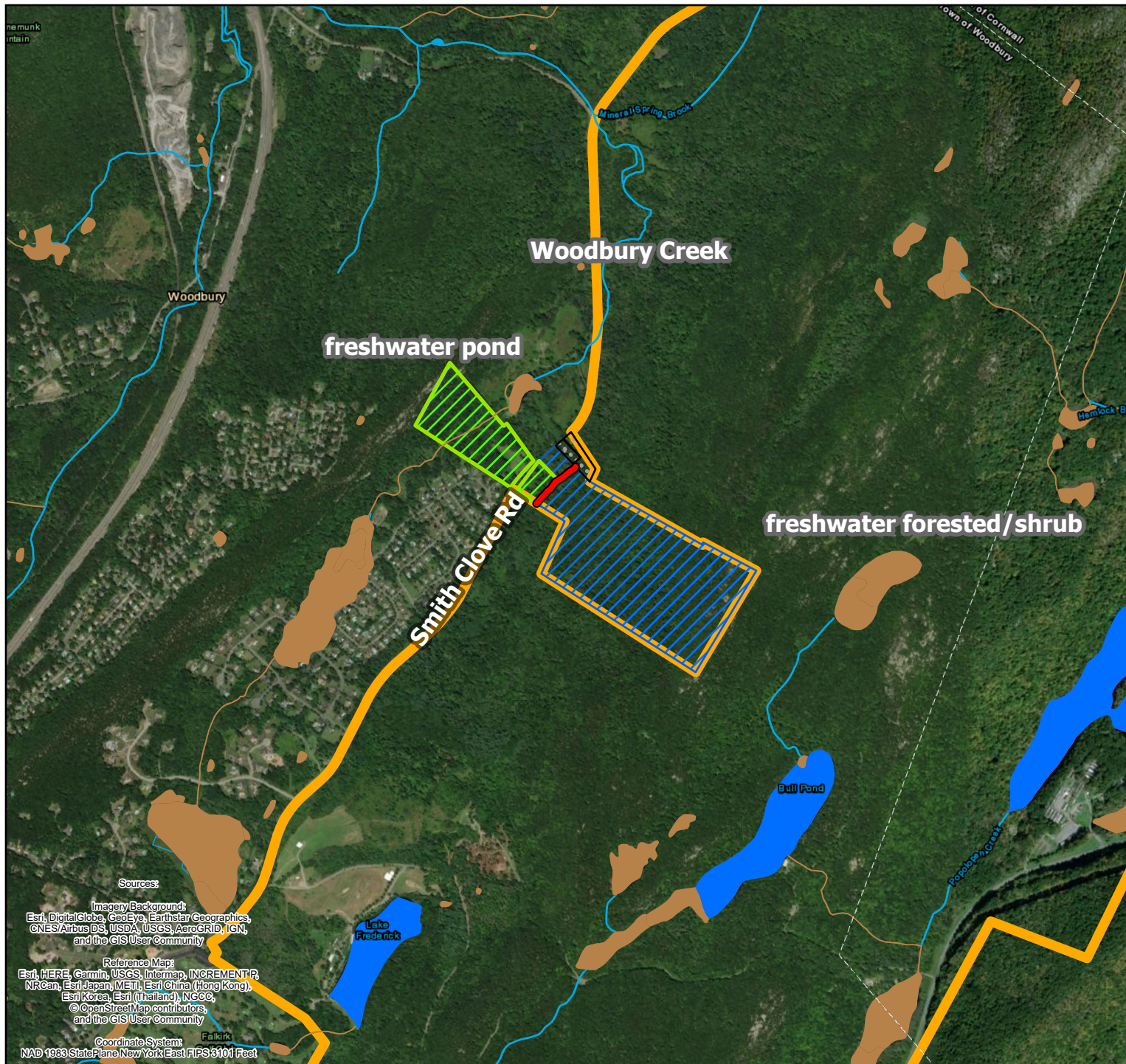
U.S. ARMY CORPS OF ENGINEERS
NEW YORK DISTRICT

Sources:
Imagery Background:
Esri, DigitalGlobe, GeoEye, Earthstar Geographics,
CNES/Airbus DS, USDA, USGS, AeroGRID, IGN,
and the GIS User Community

Reference Map:
Esri, HERE, Garmin, USGS, Intermap, INCREMENT P,
NRCan, Esri Japan, METI, Esri China (Hong Kong),
Esri Korea, Esri (Thailand), NGCC,
© OpenStreetMap contributors,
and the GIS User Community

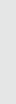
Surface Water:
Derived from National Hydrography Dataset Plus (USGS)

Coordinate System:
NAD 1983 StatePlane New York East FIPS 3101 Feet



LEGEND

- Audi Sub-division Retention
- West Point Acquisition (From Tax ID: 207-3-2)
- Private Property
- Stone Wall
- West Point Property
- USA Wetlands**
 - Palustrine
 - Riverine
 - Lacustrine



0 1,250 2,500 Feet

**West Point
Audi Land
Environmental Assessment**

**Figure 6:
Wetlands Location Map**

Date: 8/24/2020

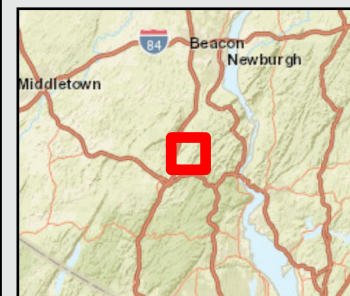
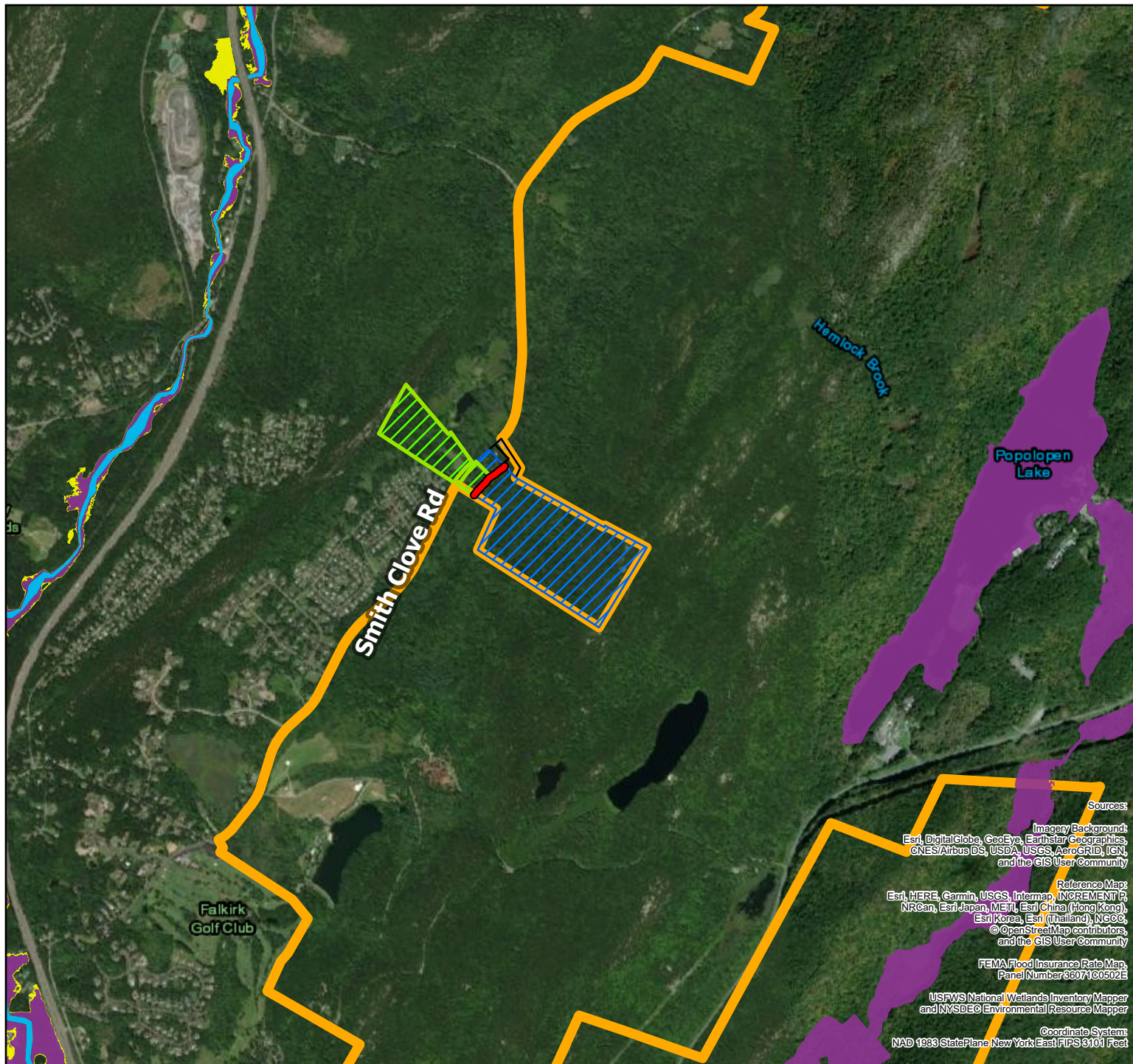


U.S. ARMY CORPS OF ENGINEERS
NEW YORK DISTRICT

Sources:
Imagery Background:
Esri, DigitalGlobe, GeoEye, Earthstar Geographics,
CNES/Airbus DS, USDA, USGS, AeroGRID, IGN,
and the GIS User Community

Reference Map:
Esri, HERE, Garmin, USGS, Intermap, INCREMENT P,
NRCan, Esri Japan, METI, Esri China (Hong Kong),
Esri Korea, Esri (Thailand), NGCC,
©OpenStreetMap contributors,
and the GIS User Community

Coordinate System:
NAD 1983 StatePlane New York East FIPS 3101 Feet

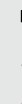


LEGEND

- Audi Sub-division Retention
- West Point Acquisition (From Tax ID: 207-3-2)
- Private Property
- West Point Property
- Stone Wall

USA Flood Hazard Areas

- 1% Annual Chance Flood Hazard
- 0.2% Annual Chance Flood Hazard
- Regulatory Floodway
- Zone X - an area outside the 0.2% annual chance floodplain



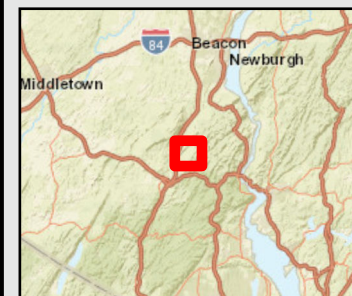
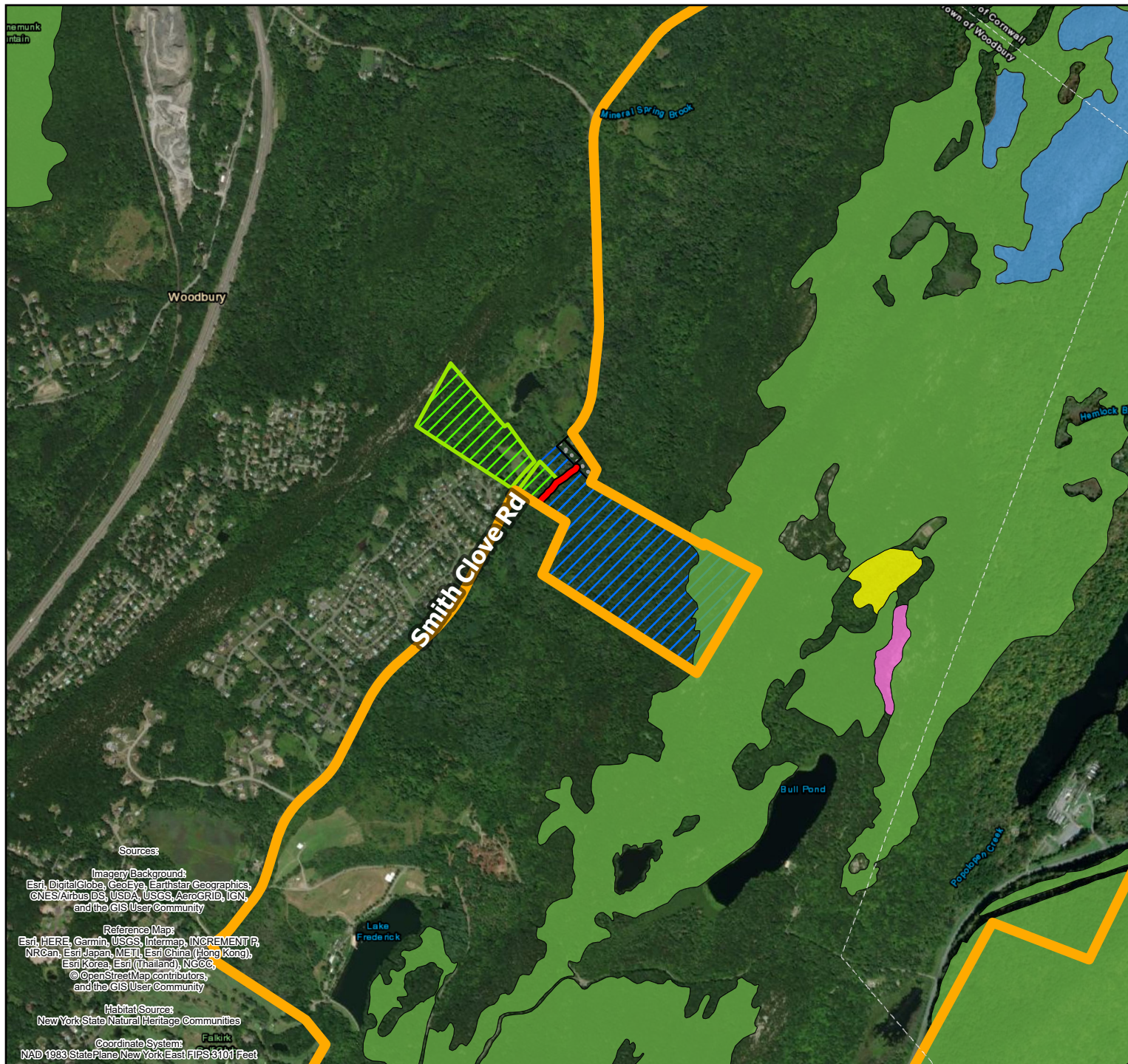
0 1,500 3,000 Feet

West Point Audi Land Environmental Assessment

Figure 7: FEMA Flood Insurance Rate Map Date: 8/24/2020



U.S. ARMY CORPS OF ENGINEERS
NEW YORK DISTRICT

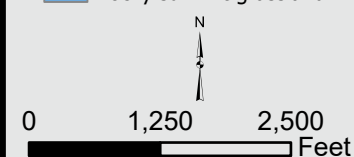


LEGEND

- Audi Sub-division Retention
- West Point Acquisition (From Tax ID: 207-3-2)
- Private Property
- West Point Property
- Stone Wall

NYS Natural Heritage Communities (2019) - Significant Natural Communities

- Acidic talus slope woodland
- Chestnut oak forest
- Hemlock-hardwood swamp
- Rocky summit grassland



West Point Audi Land Environmental Assessment

Figure 8: Terrestrial Habitats & Significant Communities Map

Date: 8/24/2020



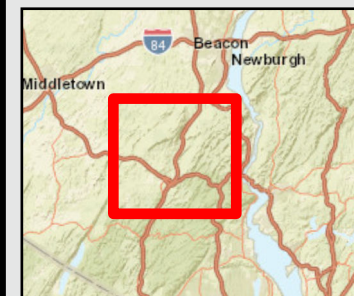
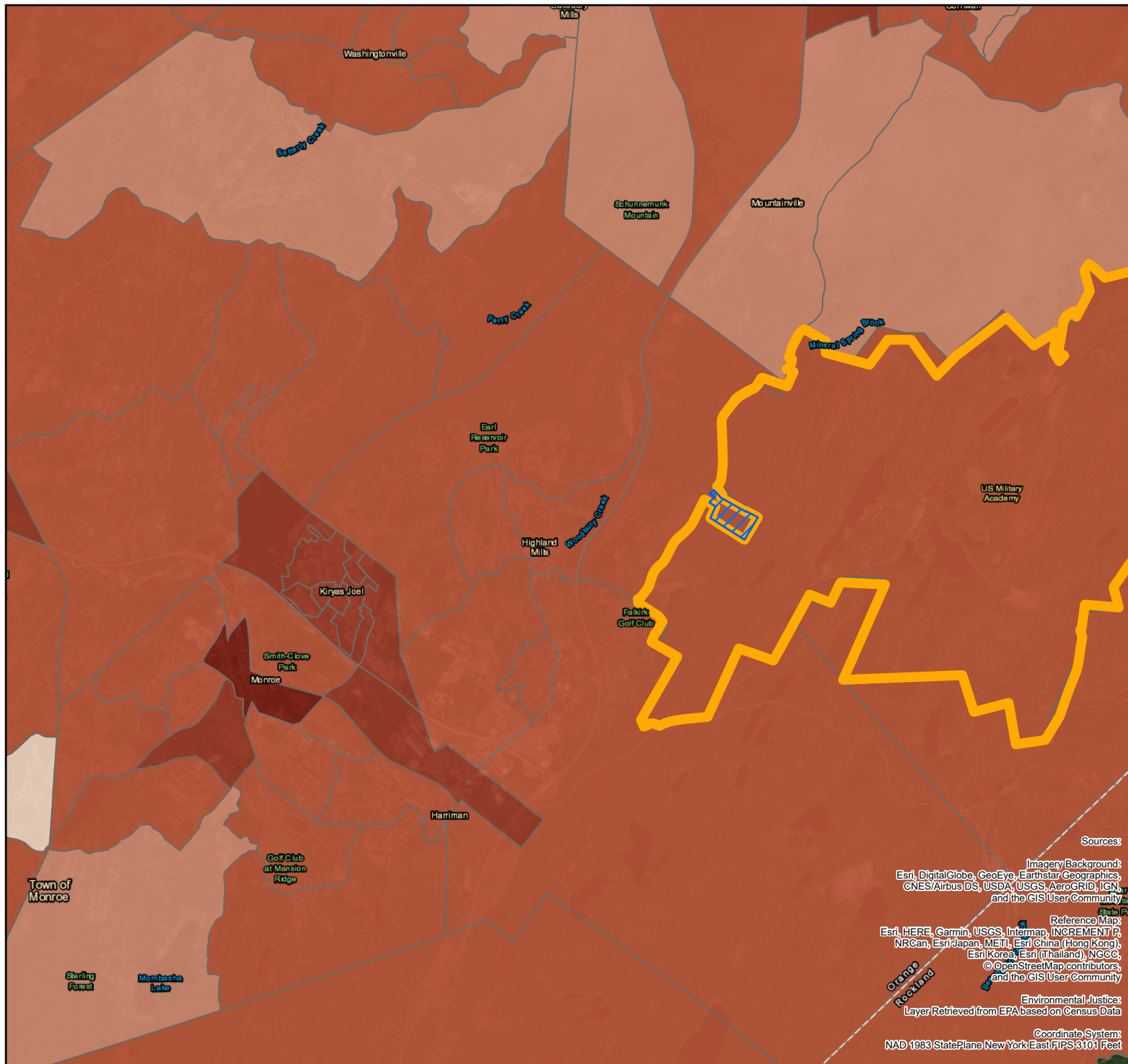
U.S. ARMY CORPS OF ENGINEERS
NEW YORK DISTRICT

Sources:
Imagery Background:
Esri, DigitalGlobe, GeoEye, Earthstar Geographics,
CNES/Airbus DS, USDA, USGS, AeroGRID, IGN,
and the GIS User Community



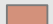

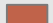
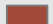
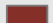

Reference Map:
Esri, HERE, Garmin, USGS, Intermap, INCREMENT P,
NRCan, Esri Japan, METI, Esri China (Hong Kong),
Esri Korea, Esri (Thailand), NGCC,
©OpenStreetMap contributors,
and the GIS User Community

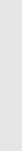
Habitat Source:
New York State Natural Heritage Communities

Coordinate System:
NAD 1983 StatePlane New York East FIPS 3101 Feet



LEGEND

-  West Point Acquisition
(From Tax ID: 207-3-2)
- Percent of Minorities**
 -  ≤ 5%
 -  ≤ 10%
 -  ≤ 20%
 -  ≤ 33%
 -  ≤ 50%
 -  ≤ 84%
-  West Point Property



0 5,000 10,000
Feet

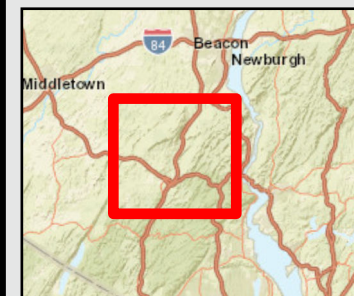
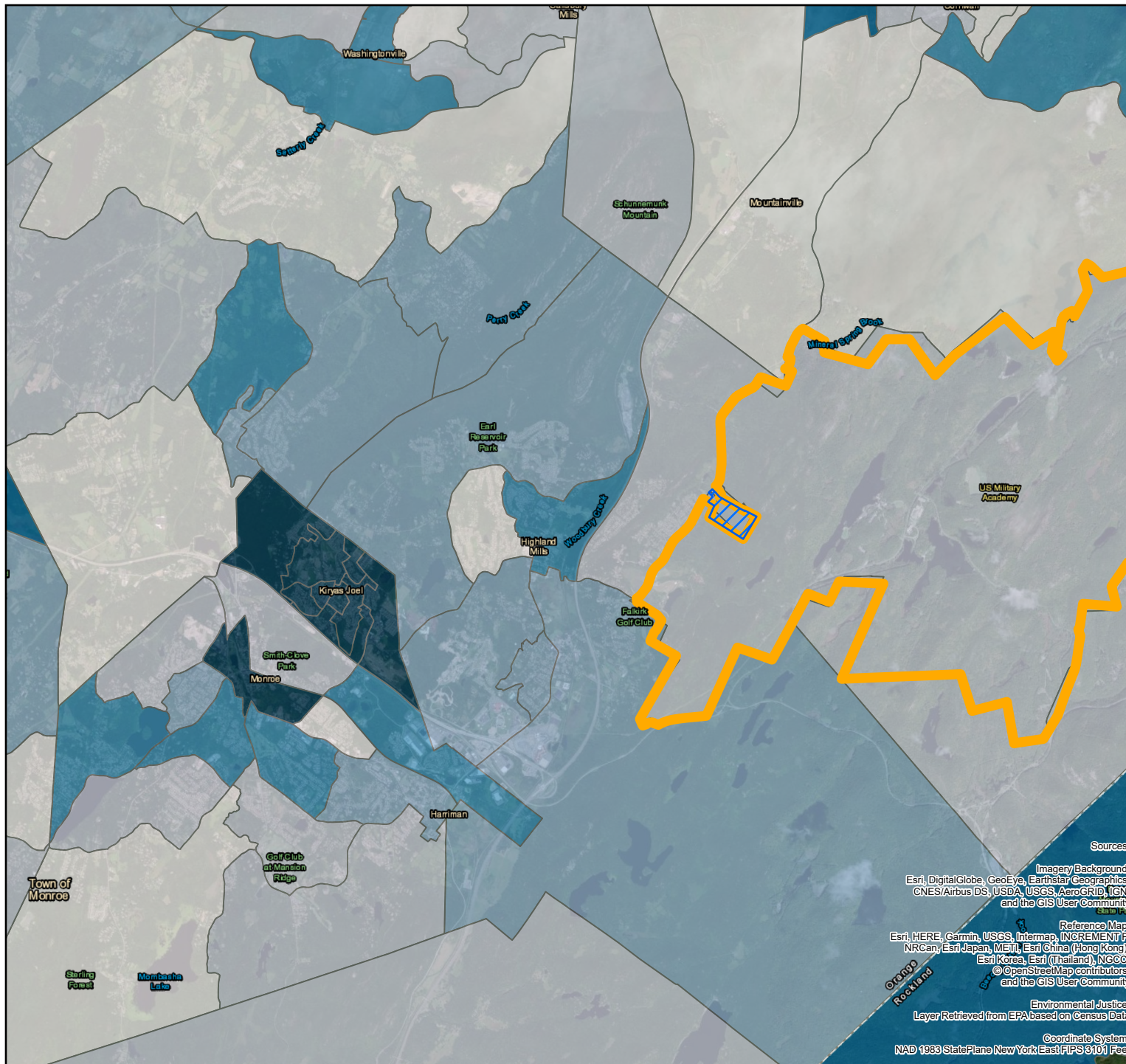
West Point Audi Land Environmental Assessment

**Figure 9A:
Environmental Justice
Minority Populations Map**
Date: 8/24/2020



U.S. ARMY CORPS OF ENGINEERS
NEW YORK DISTRICT

Sources:
Imagery Background:
Esri, DigitalGlobe, GeoEye, Earthstar Geographics,
CNES/Airbus DS, USDA, USGS, AeroGRID, IGN,
and the GIS User Community
Reference Map:
Esri, HERE, Garmin, USGS, Intermap, INCREMENT P,
NRCan, Esri Japan, METI, Esri China (Hong Kong),
Esri Korea, Esri (Thailand), NGCC,
© OpenStreetMap contributors,
and the GIS User Community
Environmental Justice:
Layer Retrieved from EPA based on Census Data
Coordinate System:
NAD 1983 StatePlane New York East FIPS 3101 Feet

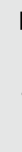


LEGEND

- West Point Acquisition (From Tax ID: 207-3-2)
- West Point Property

Percent of Low-Income

- ≤ 5%
- ≤ 10%
- ≤ 20%
- ≤ 33%
- ≤ 50%
- ≤ 87%



0 5,000 10,000 Feet

West Point Audi Land Environmental Assessment

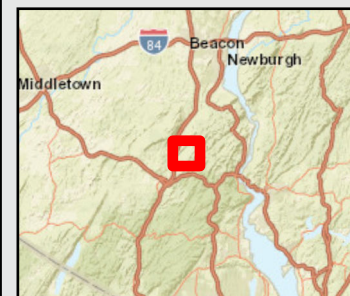
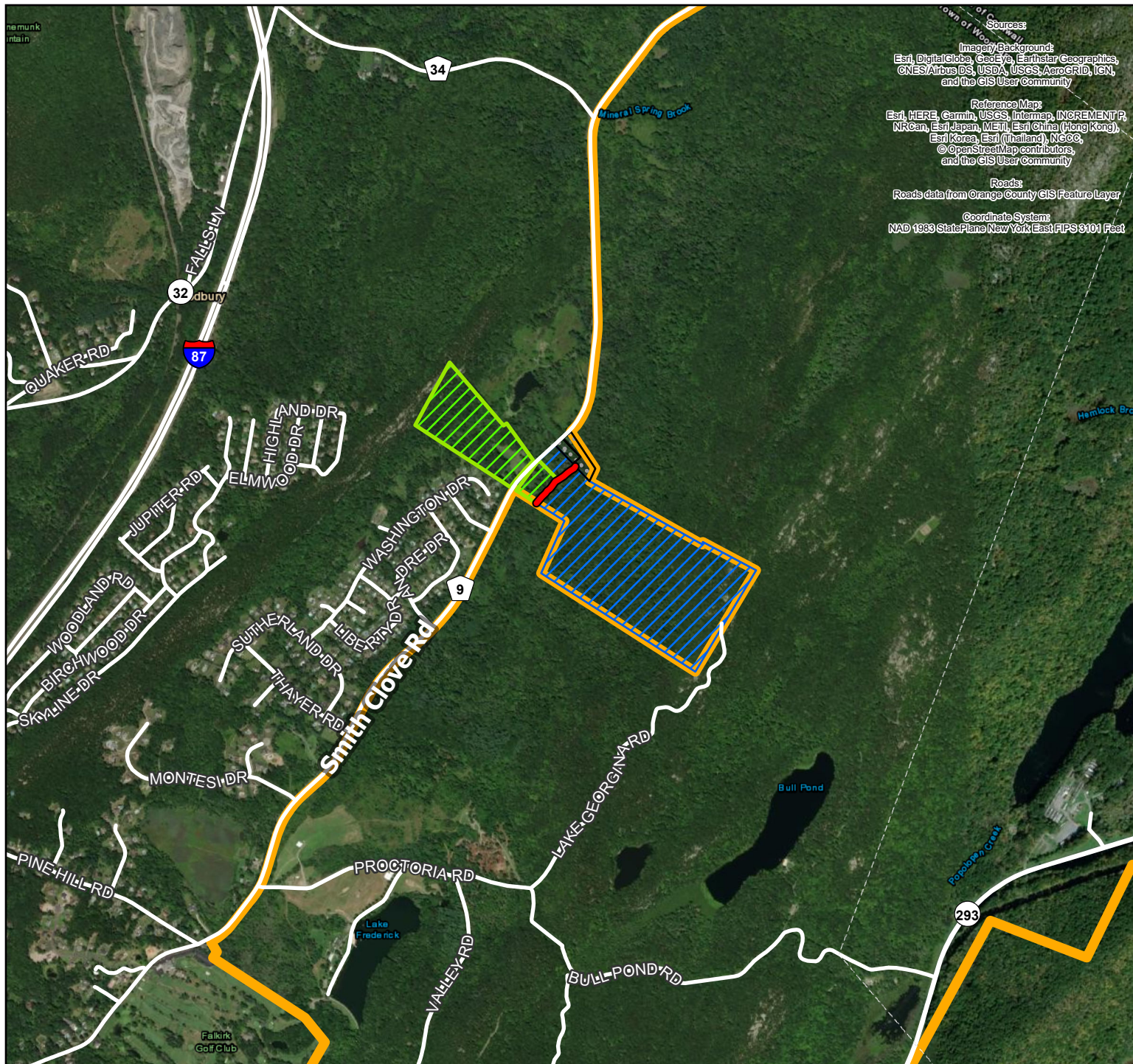
Figure 9B: Environmental Justice Low-Income Populations Map

Date: 8/24/2020



U.S. ARMY CORPS OF ENGINEERS
NEW YORK DISTRICT

Sources:
Imagery/Background:
Esri, DigitalGlobe, GeoEye, Earthstar Geographics,
CNES/Airbus DS, USDA, USGS, AeroGRID, IGN,
and the GIS User Community
Reference Map:
Esri, HERE, Garmin, USGS, Intermap, INCREMENT P,
NRCan, Esri Japan, METI, Esri China (Hong Kong),
Esri Korea, Esri (Thailand), NGCC,
© OpenStreetMap contributors,
and the GIS User Community
Environmental Justice:
Layer Retrieved from EPA based on Census Data
Coordinate System:
NAD 1983 StatePlane New York East FIPS 3101 Feet



LEGEND

- Audi Sub-division Retention
- West Point Acquisition (From Tax ID: 207-3-2)
- Private Property
- Stone Wall
- Roads
- West Point Property



0 1,250 2,500 Feet

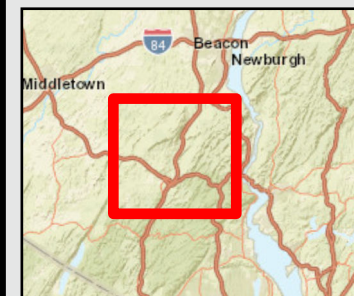
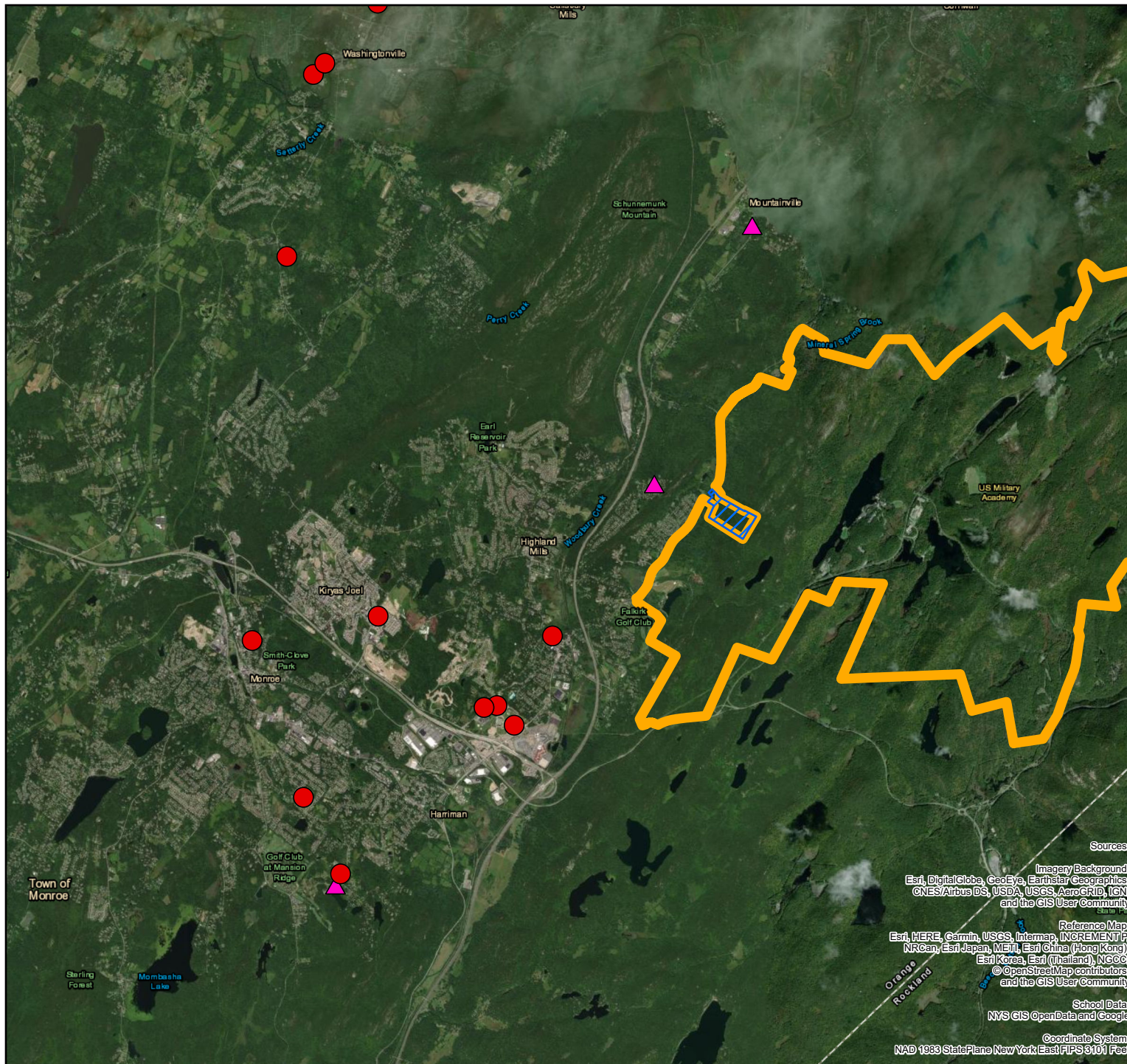
**West Point
Audi Land
Environmental Assessment**

**Figure 10:
Road Location Map**





Date: 8/24/2020

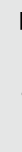


U.S. ARMY CORPS OF ENGINEERS
NEW YORK DISTRICT



LEGEND

-  West Point Acquisition (From Tax ID: 207-3-2)
-  West Point Property
-  Public Schools (K-12)
-  Nearby Daycare Locations



0 5,000 10,000 Feet

**West Point
Audi Land
Environmental Assessment**

**Figure 11:
School and Daycare
Locations Map**

Date: 8/24/2020



U.S. ARMY CORPS OF ENGINEERS
NEW YORK DISTRICT

Sources:
Imagery/Background:
Esri, DigitalGlobe, GeoEye, Earthstar Geographics,
CNES/Airbus DS, USDA, USGS, AeroGRID, IGN,
and the GIS User Community
Reference Map:
Esri, HERE, Garmin, USGS, Intermap, INCREMENT P,
NRCan, Esri Japan, METI, Esri China (Hong Kong),
Esri Korea, Esri (Thailand), NGCC,
© OpenStreetMap contributors,
and the GIS User Community
School Data:
NYS GIS OpenData and Google
Coordinate System:
NAD 1983 StatePlane New York East FIPS 3101 Feet