[illegible]

DATE OF SURVEY:		%	
1966	1967	1968	1969

SCALE:

FIELD BOOKS:

N/A

APPROVED: J. MCKELVEY

APPROVED: M. FORTE

APPROVED: P. BHADUR

APPROVED: J. MRAZ

DEPARTMENT OF THE ARMY
NEW YORK DISTRICT

NEW YORK DISTRICT
CORPS OF ENGINEERS
NEW YORK, NEW YORK 10278

OPERATIONS DIVISION
SUPPLY SECTION

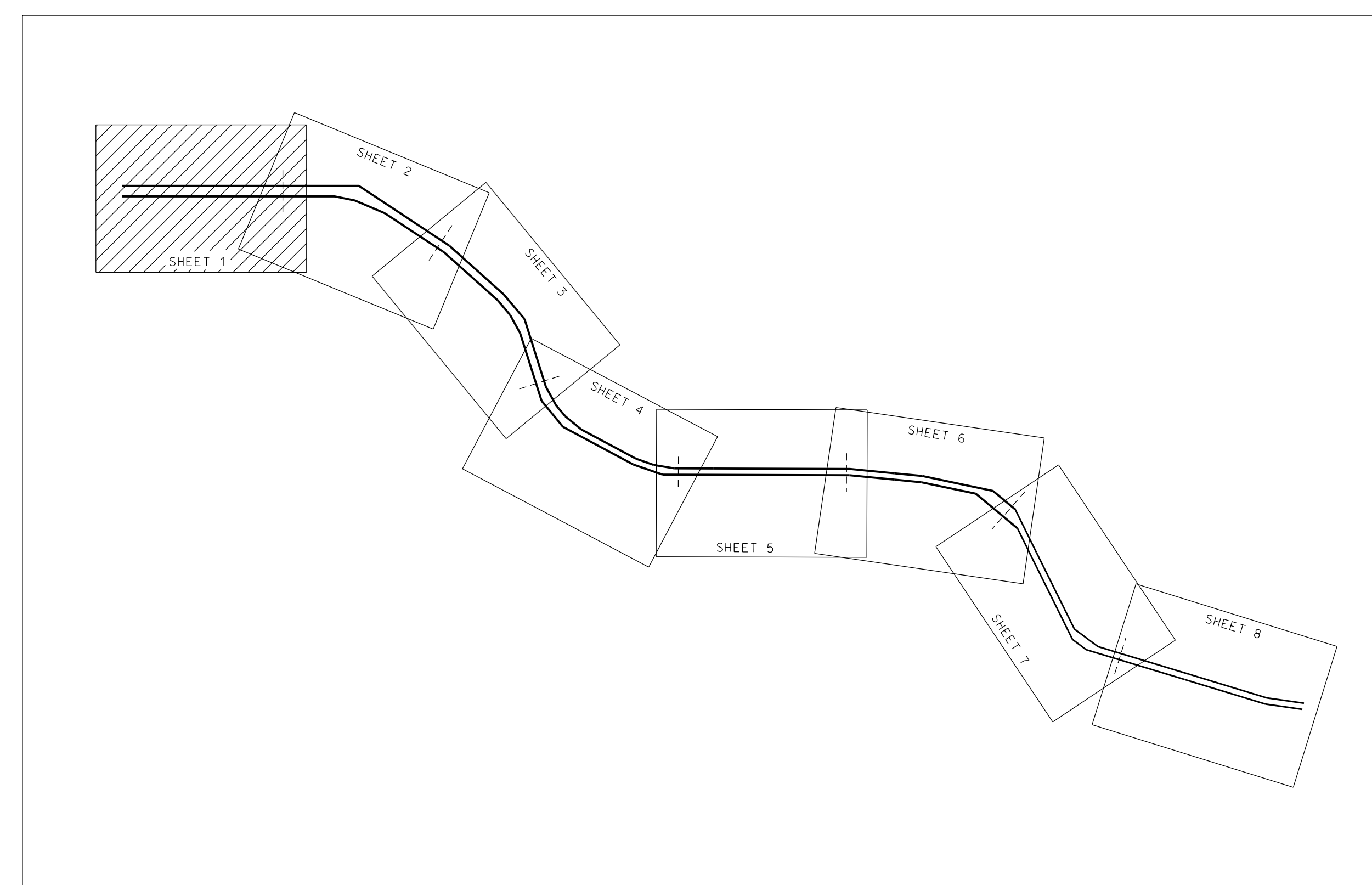
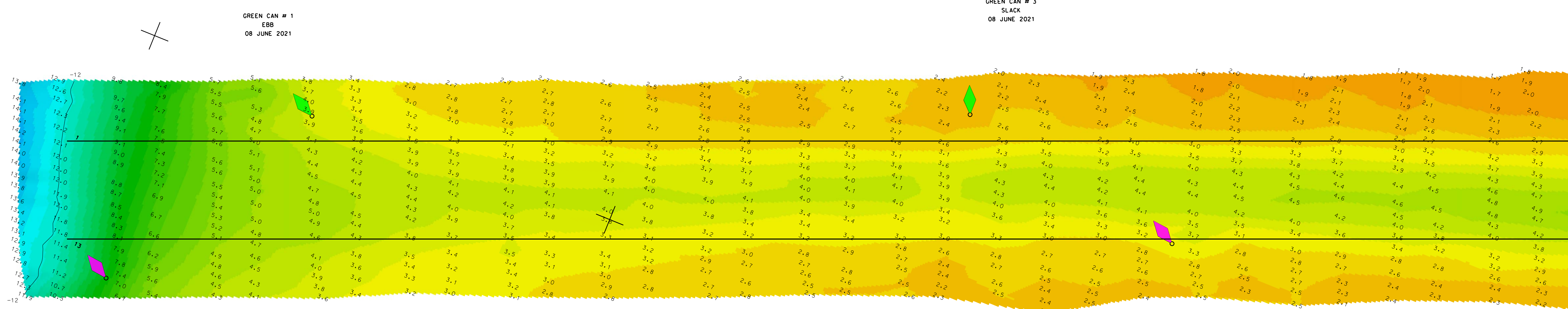
SURVEY SECTION
CENAN-OP-S

WESTCHESTER CREEK

VH-101

SHEET 1 OF 8

REQ NO./FILE NO.: 5072/N1

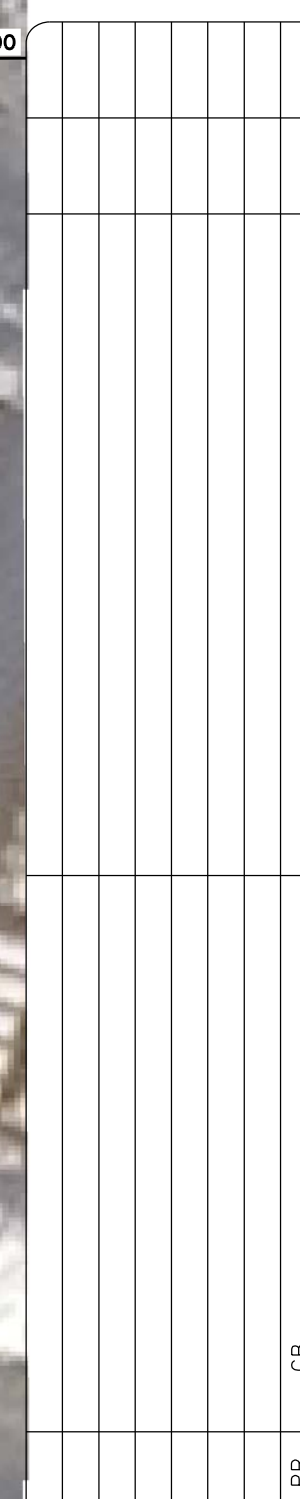
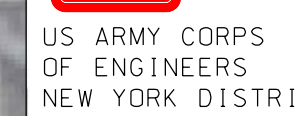


PROJECT SPECIFIC NOTES:

- THE INFORMATION DEPICTED ON THIS MAP REPRESENTS THE RESULTS OF SURVEYS MADE ON THE DATES INDICATED AND CAN ONLY BE CONSIDERED AS A GENERAL CONFOUNTO LONG EXISTING AT THAT TIME.
- THE SOUNDINGS ON THIS MAP MEET EN 1110-2-1003 ACCURACY STANDARDS
- COORDINATES REFER TO US STATE PLANE COORDINATE SYSTEM NAD 83, LONG ISLAND LAMBERT - ZONE 3104, US SURVEY FEET.
- SOUNDINGS ON THIS MAP REFER TO THE PLANE OF MEAN LOWER LOW WATER (MLLW) [EPOCH 1983-2001].
- MEAN LOWER LOW WATER IS 4 FEET BELOW NAVD88 AS DETERMINED USING DATUM 106 (V, 4.01).
- SOUNDINGS INDICATED ON THIS MAP HAVE BEEN SORTED TO A 10' INTERVAL USING THE FULL DATA SET.
- CONTOURS ON THIS MAP WERE GENERATED USING THE MAP DATA SET.
- THE DATA DEPICTED ON THIS MAP SHOULD NOT BE USED FOR VOLUME CALCULATION PURPOSES.
- AERIAL IMAGERY PROVIDED BY DIGITAL GLOBE INC (2016)
- AND IS FOR ORIENTATION PURPOSES ONLY.
- THIS SURVEY WAS PERFORMED USING REAL TIME KINEMATIC GPS FROM STATION 107, 108, 109, 110, 111, 112, 113, 114, 115, 116, 117, 118, 119, 120, 121, 122, 123, 124, 125, 126, 127, 128, 129, 130, 131, 132, 133, 134, 135, 136, 137, 138, 139, 140, 141, 142, 143, 144, 145, 146, 147, 148, 149, 150, 151, 152, 153, 154, 155, 156, 157, 158, 159, 160, 161, 162, 163, 164, 165, 166, 167, 168, 169, 170, 171, 172, 173, 174, 175, 176, 177, 178, 179, 180, 181, 182, 183, 184, 185, 186, 187, 188, 189, 190, 191, 192, 193, 194, 195, 196, 197, 198, 199, 200, 201, 202, 203, 204, 205, 206, 207, 208, 209, 210, 211, 212, 213, 214, 215, 216, 217, 218, 219, 220, 221, 222, 223, 224, 225, 226, 227, 228, 229, 230, 231, 232, 233, 234, 235, 236, 237, 238, 239, 240, 241, 242, 243, 244, 245, 246, 247, 248, 249, 250, 251, 252, 253, 254, 255, 256, 257, 258, 259, 260, 261, 262, 263, 264, 265, 266, 267, 268, 269, 270, 271, 272, 273, 274, 275, 276, 277, 278, 279, 280, 281, 282, 283, 284, 285, 286, 287, 288, 289, 290, 291, 292, 293, 294, 295, 296, 297, 298, 299, 300, 301, 302, 303, 304, 305, 306, 307, 308, 309, 310, 311, 312, 313, 314, 315, 316, 317, 318, 319, 320, 321, 322, 323, 324, 325, 326, 327, 328, 329, 330, 331, 332, 333, 334, 335, 336, 337, 338, 339, 340, 341, 342, 343, 344, 345, 346, 347, 348, 349, 350, 351, 352, 353, 354, 355, 356, 357, 358, 359, 360, 361, 362, 363, 364, 365, 366, 367, 368, 369, 370, 371, 372, 373, 374, 375, 376, 377, 378, 379, 380, 381, 382, 383, 384, 385, 386, 387, 388, 389, 390, 391, 392, 393, 394, 395, 396, 397, 398, 399, 400, 401, 402, 403, 404, 405, 406, 407, 408, 409, 410, 411, 412, 413, 414, 415, 416, 417, 418, 419, 420, 421, 422, 423, 424, 425, 426, 427, 428, 429, 430, 431, 432, 433, 434, 435, 436, 437, 438, 439, 440, 441, 442, 443, 444, 445, 446, 447, 448, 449, 450, 451, 452, 453, 454, 455, 456, 457, 458, 459, 460, 461, 462, 463, 464, 465, 466, 467, 468, 469, 470, 471, 472, 473, 474, 475, 476, 477, 478, 479, 480, 481, 482, 483, 484, 485, 486, 487, 488, 489, 490, 491, 492, 493, 494, 495, 496, 497, 498, 499, 500, 501, 502, 503, 504, 505, 506, 507, 508, 509, 510, 511, 512, 513, 514, 515, 516, 517, 518, 519, 520, 521, 522, 523, 524, 525, 526, 527, 528, 529, 530, 531, 532, 533, 534, 535, 536, 537, 538, 539, 540, 541, 542, 543, 544, 545, 546, 547, 548, 549, 550, 551, 552, 553, 554, 555, 556, 557, 558, 559, 560, 561, 562, 563, 564, 565, 566, 567, 568, 569, 570, 571, 572, 573, 574, 575, 576, 577, 578, 579, 580, 581, 582, 583, 584, 585, 586, 587, 588, 589, 590, 591, 592, 593, 594, 595, 596, 597, 598, 599, 600, 601, 602, 603, 604, 605, 606, 607, 608, 609, 610, 611, 612, 613, 614, 615, 616, 617, 618, 619, 620, 621, 622, 623, 624, 625, 626, 627, 628, 629, 630, 631, 632, 633, 634, 635, 636, 637, 638, 639, 640, 641, 642, 643, 644, 645, 646, 647, 648, 649, 650, 651, 652, 653, 654, 655, 656, 657, 658, 659, 660, 661, 662, 663, 664, 665, 666, 667, 668, 669, 670, 671, 672, 673, 674, 675, 676, 677, 678, 679, 680, 681, 682, 683, 684, 685, 686, 687, 688, 689, 690, 691, 692, 693, 694, 695, 696, 697, 698, 699, 700, 701, 702, 703, 704, 705, 706, 707, 708, 709, 710, 711, 712, 713, 714, 715, 716, 717, 718, 719, 720, 721, 722, 723, 724, 725, 726, 727, 728, 729, 730, 731, 732, 733, 734, 735, 736, 737, 738, 739, 740, 741, 742, 743, 744, 745, 746, 747, 748, 749, 750, 751, 752, 753, 754, 755, 756, 757, 758, 759, 760, 761, 762, 763, 764, 765, 766, 767, 768, 769, 770, 771, 772, 773, 774, 775, 776, 777, 778, 779, 780, 781, 782, 783, 784, 785, 786, 787, 788, 789, 790, 791, 792, 793, 794, 795, 796, 797, 798, 799, 800, 801, 802, 803, 804, 805, 806, 807, 808, 809, 810, 811, 812, 813, 814, 815, 816, 817, 818, 819, 820, 821, 822, 823, 824, 825, 826, 827, 828, 829, 830, 831, 832, 833, 834, 835, 836, 837, 838, 839, 840, 841, 842, 843, 844, 845, 846, 847, 848, 849, 850, 851, 852, 853, 854, 85

NSRS BENCHMARK	
BENCHMARK:	W340 PID: KU1003
ELEVATION:	20.10 NAVD 1988

LOCAL CONTROL DATA	
BENCHMARK:	V 340 PID: KU1002
ELEVATION:	51.50 NAVD 1988



27
ATES OF SURVEY:

SCALE:

FIELD BOOKS:

APPROVED: J. MCKELVEY

APPROVED: P. BHADUR

DEPARTMENT OF THE ARMY
NEW YORK DISTRICT

OPERATIONS DIVISION
SUPPLY SECTION

CHESTER CREEK

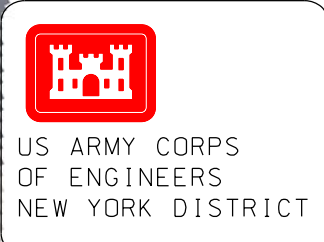
VH-102

SHEET 2 OF 8

REQ NO./FILE NO.: 5072/N

PROJECT SPECIFIC NOTES

- THE INFORMATION DEPICTED ON THIS MAP REPRESENTS THE RESULTS OF SURVEYS MADE ON THE DATES INDICATED AND CAN ONLY BE CONSIDERED AS THE GENERAL CONDITIONS EXISTING AT THAT TIME.
- THE SOUNDINGS ON THIS MAP MEET EN 1110-2-1003 ACCURACY STANDARDS.
- CONTIGUOUS REFERENCE TO UTM PLANE COORDINATE SYSTEM NAD 83, LONG ISLAND AND AMERICA ZONE 18T04, U.S. FEET.
- SOUNDINGS ON THIS MAP REFER TO THE PLANE OF MEAN LOWER LOW WATER (MLLW) [VDOT 1983-2001].
- MEAN LOWER LOW WATER IS 4.4 FEET BELOW NAVD88 AS DETERMINED USING EPOCH 1985-4.0.
- SOUNDINGS DEPICTED ON THIS MAP HAVE BEEN SORTED TO A 10' INTERVAL USING THE FULL DATA SET.
- CONTOURS ON THIS MAP WERE DERIVED USING THE MAP DATA SET.
- THE DATA DEPICTED ON THIS MAP SHOULD NOT BE USED FOR VOLUME CALCULATION PURPOSES.
- AERIAL IMAGERY PROVIDED BY DIGITAL GLOBE INC (2016) AND IS FOR ORIENTATION PURPOSES ONLY.
- THIS SURVEY WAS PERFORMED USING REAL TIME KINEMATIC GPS FROM STATION "RTK CUMMINS 19".
- THIS MAP IS BEING COMPILED IN ACCORDANCE WITH EN 1110-2-8160 AND EN 1110-2-8161.

[illegible]

SCALE : ONE INCH = 50 FEET	DATES OF SURVEY : 2.7-8 JUNE 2021
FIELD BOOKS : N/A	REQ NO./FILE NO. : 5072/N1

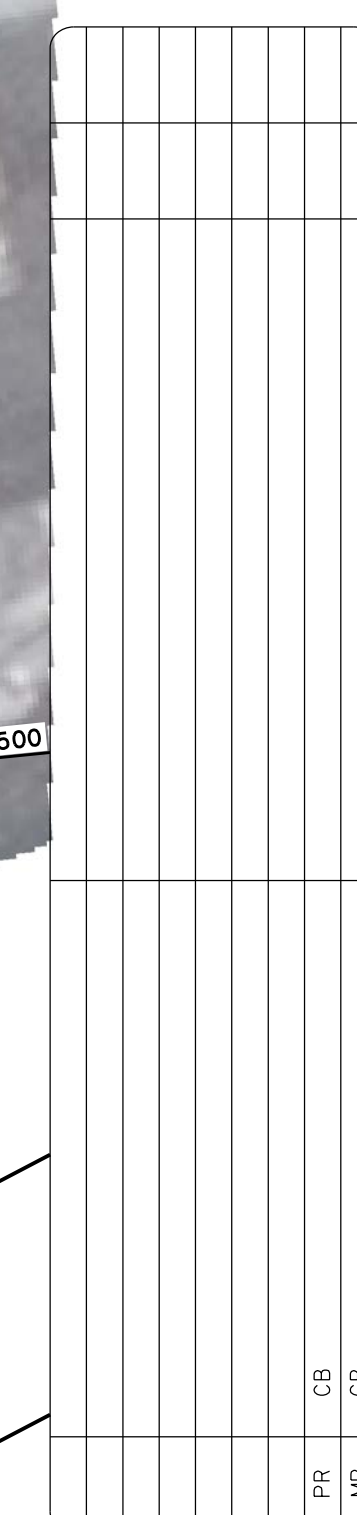
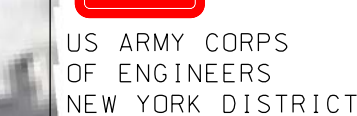
DEPARTMENT OF THE ARMY NEW YORK DISTRICT OFFICE OF THE ADJUTANT GENERAL NEW YORK, NEW YORK 10278	APPROVED: J. J. MCKELVEY FIRST COMMANDER
	APPROVED: M. FORTI TITLE: INCLUDING LOCATION
	APPROVED: P. BHADUR TYPE OF PROPERTY
	APPROVED: J. J. WRAZ DATE: 16 JUNE 2021

WESTCHESTER CREEK
NEW YORK
CONDITION SURVEY

VH-103

SHEET 3 OF 8

REQ NO./FILE NO.: 5072/N



DATES OF SURVEY:

SCALE:
ONE INCH = 50 FEET

APPROVED: J. MCQUEEN	FIELD SUPERVISOR
APPROVED: M. FORTE	CITY ENGINEERING TECHNICIAN
APPROVED: P. BHADUR	FIELD SUPERVISOR
APPROVED: J. WRAZ	SENIOR CHIEF OF STAFF

WESTCHESTER CREEK
NEW YORK
CONDITION SURVEY

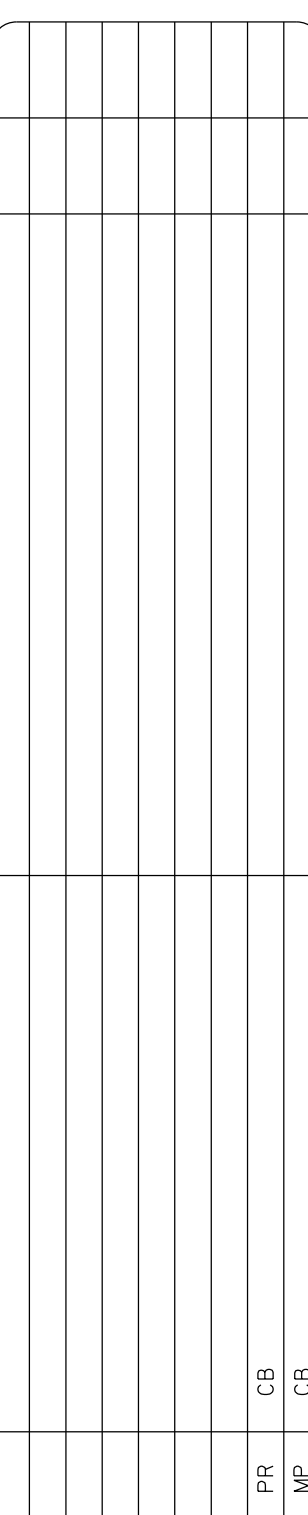
VH-104

SHEET 4 OF 8

REQ. NO./FILE NO.: 5072/N1

PROJECT SPECIFIC NOTES:

- THIS INFORMATION DEPICTED ON THIS MAP REPRESENTS THE RESULTS OF SURVEYS MADE ON THE DATES INDICATED AND CAN ONLY BE CONSIDERED AS THE GENERAL CONDITIONS EXISTING AT THAT TIME.
- THE DATA ON THIS MAP DOES NOT MEET THE SURVEYING STANDARDS.
- COORDINATES REFER TO US STATE PLANE COORDINATE SYSTEM NAD 83.
- LONG 150.484 LAMBERT - ZONE 3104, US PLANE FEET.
- THE DIMENSIONS OF THE MAP ARE TO THE PLAY OF MEAN LOWER LOW WATER (MLLW) [ISLAND 1983-2001].
- MEAN LOWER LOW WATER IS 4 FEET BELOW NAVD83 AS DETERMINED BY THE NATIONAL TIDE DATUM.
- SOUNDINGS DEPicted ON THIS MAP HAVE BEEN SORTED TO A 0.5' INTERVAL USING THE FOLLOWING CRITERIA:
- CONTOURS ON THIS MAP WERE GENERATED USING THE MAP DATA SET.
- THE DATA DEPICTED ON THIS MAP SHOULD NOT BE USED FOR VOLUME CALCULATION PURPOSES.
- AERIAL IMAGERY PROVIDED BY DIGITAL GLOBE INC. (2016)
- AND IS FOR ORIENTATION PURPOSES ONLY.
- THIS SURVEY WAS PERFORMED IN REAL TIME KINEMATIC GPS FROM STATION "RPT CUMMINGS 1N".
- THIS MAP IS CEK COMPLIANT IN ACCORDANCE WITH 1110-2-9160



DATES OF SURVEY:

SCALE:

FIELD BOOKS:

N/A

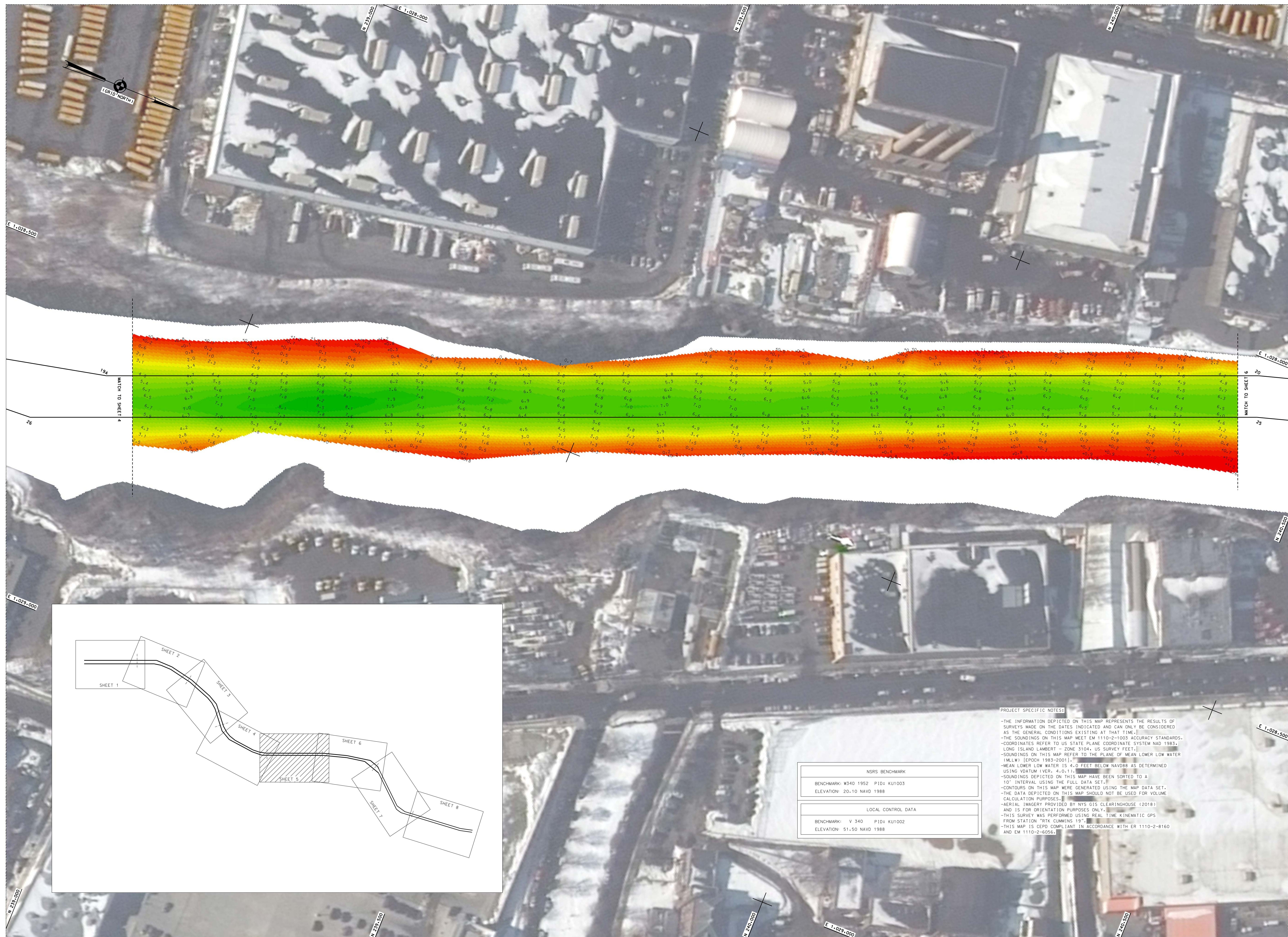
REQ NO./FILE NO.: 5072/N1

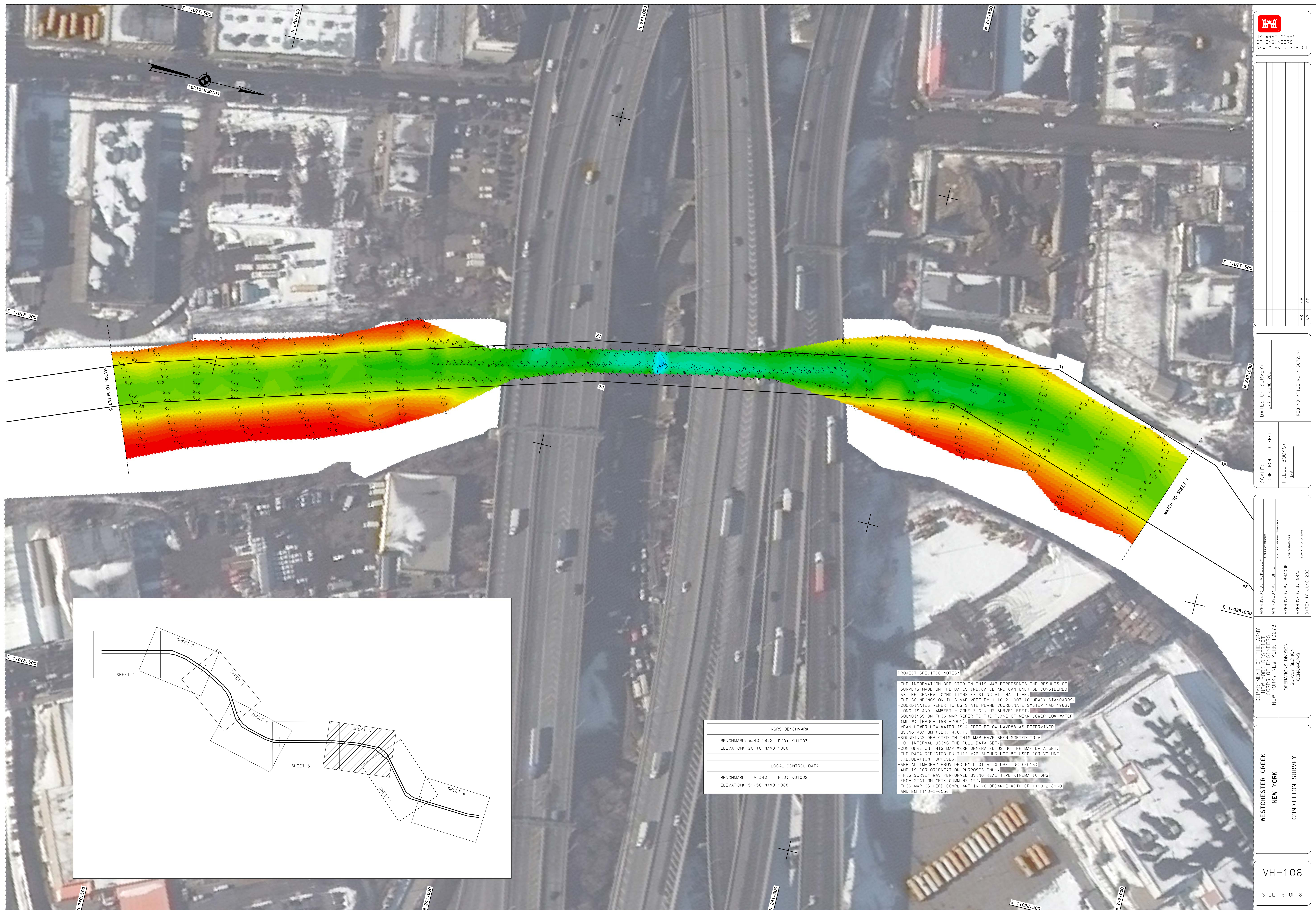
DEPARTMENT OF THE ARMY DISTRICT OF COLUMBIA HEADQUARTERS NEW YORK, NEW YORK 10278	APPROVED: J. J. MOCKLEY FREE COUNSELOR
OPERATIONS DIVISION SURVEY SECTION CENAN-OPS	APPROVED: M. FORTE CIVIL INQUIRY/INTELLIGENCE
	APPROVED: P. BHADRI LNO COUNSELOR
	APPROVED: J. NRAZ DEPT. HEAD OF STATE
	DATE: 16. JUNE 2021

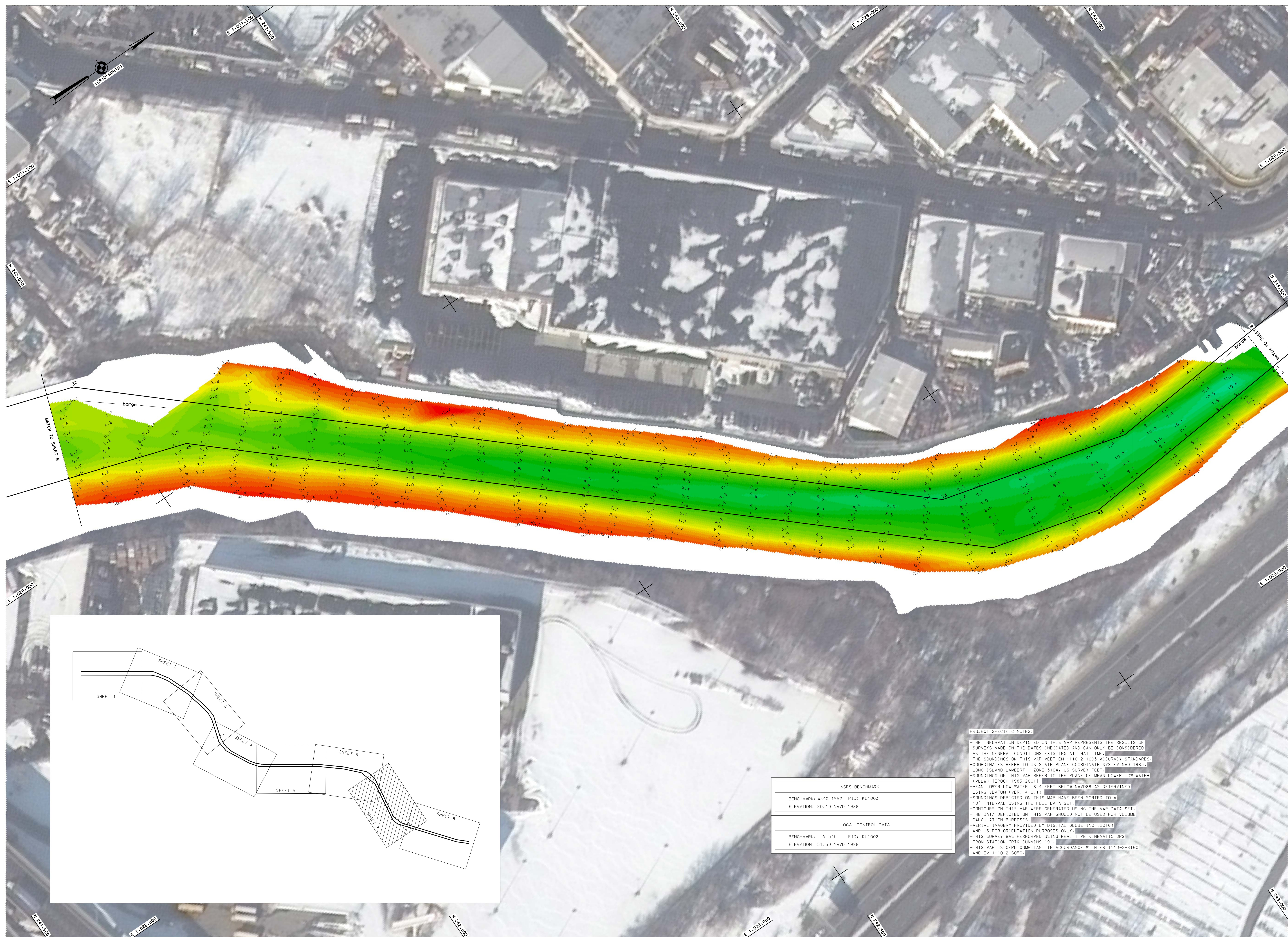
WESTCHESTER CREEK
NEW YORK
CONDITION SURVEY

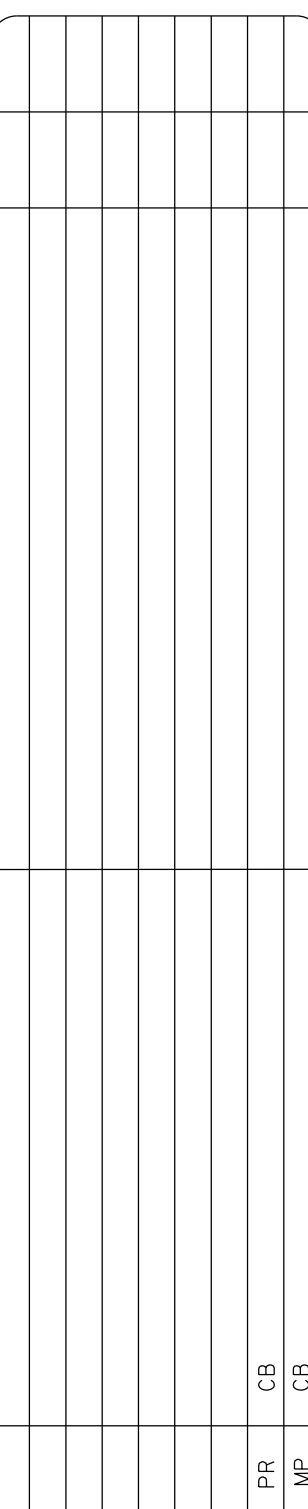
VH-105

REQ NO./FILE NO.: 5072/N1









DATES OF SURVEY:
2.7-8 JUNE 2021

SCALE:
ONE INCH = 50 FEET

FIELD BOOKS:

N/A _____

APPROVED: J. MCKELVEY
FIELD ENGINEER

APPROVED: M. FORTE
CIVIL ENGINEERING TECHNICIAN

APPROVED: P. BHADUR
LEAD ENGINEER

APPROVED: J. MRAZ
SENIOR CHIEF OF SERVICE

DATE: 16 JUNE 2021

DEPARTMENT OF THE ARMY
NEW YORK DISTRICT
CORPS OF ENGINEERS
NEW YORK, NEW YORK 10278

OPERATIONS DIVISION
SURVEY SECTION
CENAN-OP-S

WESTCHESTER CREEK
NEW YORK
CONDITION SURVEY

VH-108

SHEET 8 OF 8

REQ NO./FILE NO.: 5072/N1

