

US ARMY CORPS
OF ENGINEERS
NEW YORK DISTRICT

	PR	E0
	M _C	S _G

27-28 JULY 2022

10 AUG 2022

REQ. NO./FILE NO.: 5204/N1/N3

SCALE:

ONE INCH = 100

FIELD BOOKS:

APPROVED:	J. MCKELVEY
	FIELD CARTOGRAPHER
APPROVED:	M. FORTE
	CIVIL ENGINEERING TECHNICIAN
APPROVED:	P. BHADUR
	LEAD CARTOGRAPHER
APPROVED:	J. MRAZ
	DEPUTY CHIEF OF SURVEY
DATE:	11 AUGUST 2022

DEPARTMENT OF THE ARMY
U.S. ARMY CORPS OF ENGINEERS
NEW YORK DISTRICT

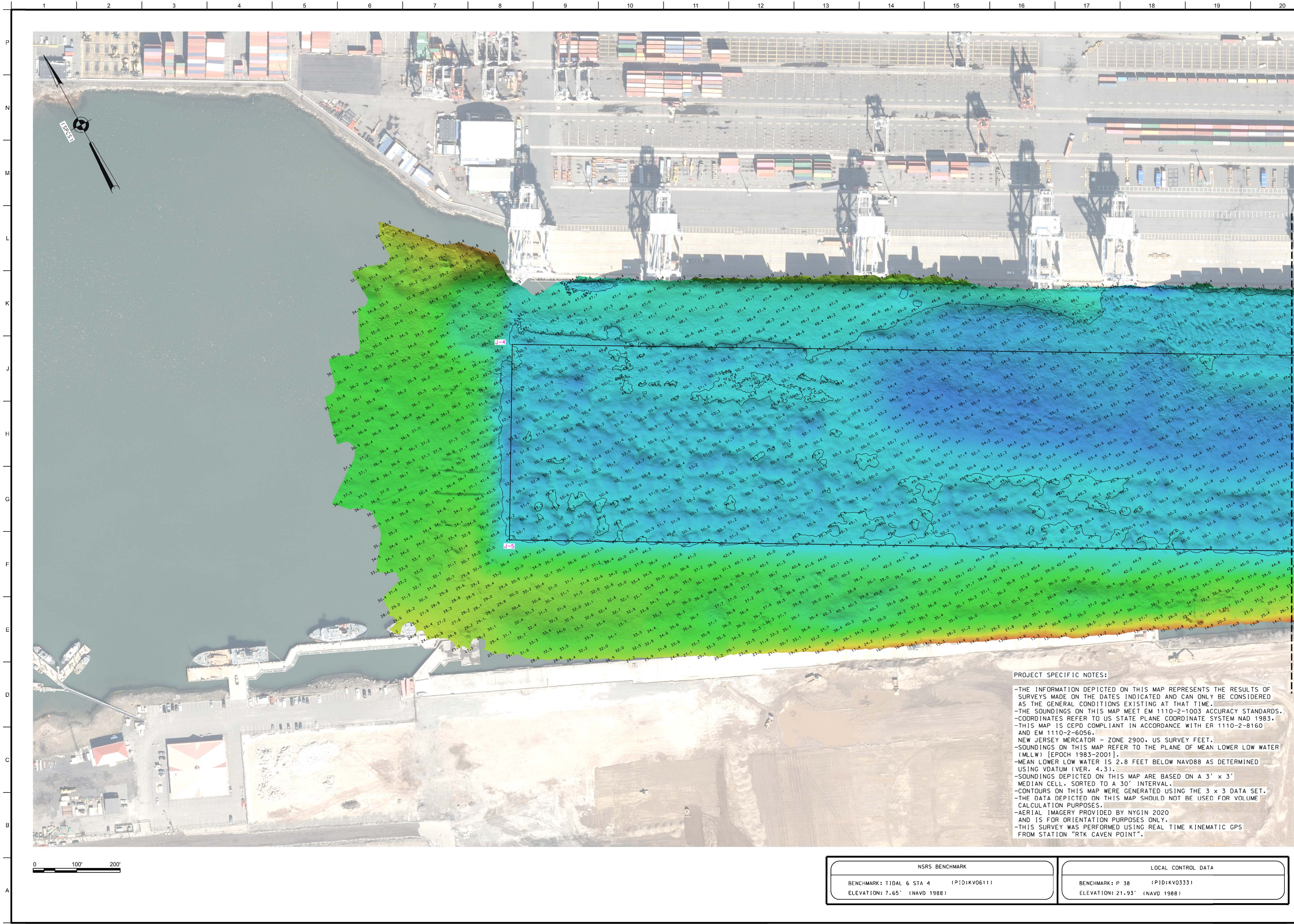
NEW YORK, NEW YORK 10278
OPERATIONS DIVISION
SURVEY SECTION

PORT JERSEY
NEW YORK AND NEW JERSEY HARBOR

CONDITION SURVEY

VH-103

3 OF 4



PROJECT SPECIFIC NOTES:

- THE INFORMATION DEPICTED ON THIS MAP REPRESENTS THE RESULTS OF SURVEYS MADE ON THE DATES INDICATED AND CAN ONLY BE CONSIDERED AS THE GENERAL CONDITIONS EXISTING AT THAT TIME.
- THE SOUNDINGS ON THIS MAP MEET EM 1110-2-1003 ACCURACY STANDARDS.
- COORDINATES REFER TO US STATE PLANE COORDINATE SYSTEM NAD 1983.
- THIS MAP IS CEPD COMPLIANT IN ACCORDANCE WITH ER 1110-2-8160 AND EM 1110-2-6056.
- NEW JERSEY MERCATOR - ZONE 2900, US SURVEY FEET.
- SOUNDINGS ON THIS MAP REFER TO THE PLANE OF MEAN LOWER LOW WATER (MLLW) [EPOCH 1983-2001].
- MEAN LOWER LOW WATER IS 2.8 FEET BELOW NAVD88 AS DETERMINED USING VDUTUM (VER. 4.3).
- SOUNDINGS DEPICTED ON THIS MAP ARE BASED ON A 3' x 3' MEDIAN CELL, SORTED TO A 30' INTERVAL.
- CONTOURS ON THIS MAP WERE GENERATED USING THE 3 x 3 DATA SET.
- THE DATA DEPICTED ON THIS MAP SHOULD NOT BE USED FOR VOLUME CALCULATION PURPOSES.
- AERIAL IMAGERY PROVIDED BY NYGIN 2020 AND IS FOR ORIENTATION PURPOSES ONLY.
- THIS SURVEY WAS PERFORMED USING REAL TIME KINEMATIC GPS FROM STATION "RTK CAVEN POINT".

NSRS BENCHMARK	LOCAL CONTROL DATA
BENCHMARK: TIDAL 6 STA 4 (PID:KV0611)	BENCHMARK: P 38 (PID:KV0333)
ELEVATION: 7.65' (NAVD 1988)	ELEVATION: 21.93' (NAVD 1988)

US ARMY CORPS OF ENGINEERS
NEW YORK DISTRICT

DATE OF SURVEY: 27-28 JULY 2022 TO AUG 2022

SCALE: ONE INCH = 100 FEET

FIELD BOOKS: N/A

REQ. NO./FILE NO.: 5193/NI/1/3

APPROVED: J. MICHELVEY FIELD CARTOGRAPHER

APPROVED: M. FORTE LEAD ENGINEERING TECHNICIAN

APPROVED: P. BALDWIN LEAD CARTOGRAPHER

APPROVED: J. MGAZ GEARY CHIEF OF SURVEY

DATE: 11 AUGUST 2022

DEPARTMENT OF THE ARMY
U.S. ARMY CORPS OF ENGINEERS
NEW YORK DISTRICT
NEW YORK, NEW YORK 10278

OPERATIONS DIVISION
SURVEY SECTION
CENAN-OP-SS

PORT JERSEY
NEW YORK AND NEW JERSEY HARBOR

CONDITION SURVEY

VH-104

4 OF 4