

US ARMY CORPS  
OF ENGINEERS  
NEW YORK DISTRICT

		JDS
	PR	JDS
	MP	

09.11.15 AUG 2022

REQ. NO./FILE NO.: 5213

SCALE:  
ONE INCH = 50 FEET

FIELD BOOKS:

APPROVED:	J. MCKELVEY	FIELD CARTOGRAPHER
APPROVED:	M. FORTE	CIVIL ENGINEERING TECHNICIAN
APPROVED:	P. BHADUR	LEAD CARTOGRAPHER
APPROVED:	J. MRAZ	DEPUTY CHIEF OF SURVEY
DATE:	18 AUG 22	

U.S. ARMY CORPS OF ENGINEERS  
NEW YORK DISTRICT  
NEW YORK, NEW YORK 10278

---

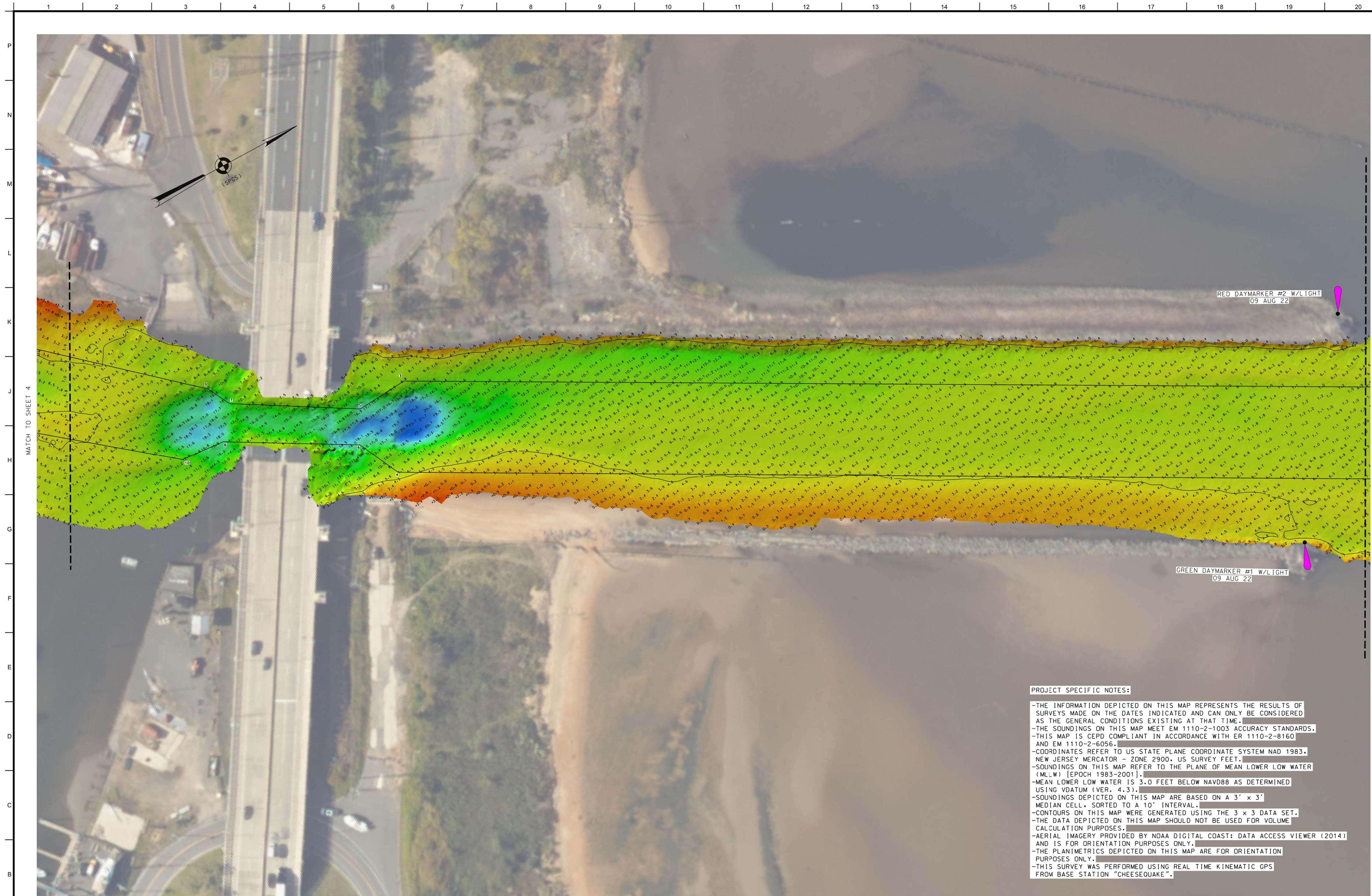
OPERATIONS DIVISION  
SURVEY SECTION  
CENAN-OP-SS

CHEESEQUAKE CREEK  
NEW JERSEY  
CONDITION SURVEY

VH-102

2 OF 14





US ARMY CORPS  
OF ENGINEERS  
NEW YORK DISTRICT

		JDS
	PR	JDS
	MP	

SCALE: ONE INCH = 50 FEET	DATES OF SURVEY: 09.11.15 AUG 2022
FIELD BOOKS: DNA3	_____ _____ _____
REG. NO./FILE NO.: 5213	

APPROVED:	J. MCKELVEY	FIELD CARTOGRAPHER
APPROVED:	M. FORTE	CIVIL ENGINEERING TECHNICIAN
APPROVED:	P. BHADUR	LEAD CARTOGRAPHER
APPROVED:	J. WRZAJ	DEPUTY CHIEF OF SURVEY
DATE:	18 AUG 22	

DEPARTMENT OF THE ARMY  
U.S. ARMY CORPS OF ENGINEERS  
NEW YORK DISTRICT  
NEW YORK, NEW YORK 10278

---

OPERATIONS DIVISION  
SURVEY SECTION  
CENAN-OP-SS

CHEESEQUAKE CREEK  
NEW JERSEY  
CONDITION SURVEY

VH-103

3 OF 14

PROJECT SPECIFIC NOTES:

THE INFORMATION DEPICTED ON THIS MAP REPRESENTS THE RESULTS OF SURVEYS MADE ON THE DATES INDICATED AND CAN ONLY BE CONSIDERED AS THE GENERAL CONDITIONS EXISTING AT THAT TIME.

- THE SOUNDINGS ON THIS MAP MEET EM 1110-2-1003 ACCURACY STANDARDS.
- THIS MAP IS CEPD COMPLIANT IN ACCORDANCE WITH ER 1110-2-8160 AND EM 1110-2-6056.
- COORDINATES REFER TO US STATE PLANE COORDINATE SYSTEM NAD 1983, NEW JERSEY MERCATOR - ZONE 2900, US SURVEY FEET.
- SOUNDINGS ON THIS MAP REFER TO THE PLANE OF MEAN LOWER LOW WATER (MLLW) [EPOCH 1983-2001].
- MEAN LOWER LOW WATER IS 3.0 FEET BELOW NAVD88 AS DETERMINED USING VDATUM (VER, 4.3).
- SOUNDINGS DEPICTED ON THIS MAP ARE BASED ON A 3' x 3' MEDIAN CELL, SORTED TO A 10' INTERVAL.
- CONTOURS ON THIS MAP WERE GENERATED USING THE 3 x 3 DATA SET.
- THE DATA DEPICTED ON THIS MAP SHOULD NOT BE USED FOR VOLUME CALCULATION PURPOSES.
- AERIAL IMAGERY PROVIDED BY NOAA DIGITAL COAST: DATA ACCESS VIEWER (2014) AND IS FOR ORIENTATION PURPOSES ONLY.
- THE PLANIMETRICS DEPICTED ON THIS MAP ARE FOR ORIENTATION PURPOSES ONLY.
- THIS SURVEY WAS PERFORMED USING REAL TIME KINEMATIC GPS FROM BASE STATION "CHEESECAKE".

LOCAL CONTROL DATA

BENCHMARK: CHEESEOUAKE  
ELEVATION: 8.26' (NAVD 1988)

NSRS BENCHMARK

BENCHMARK: X 36 (PID:KV0770)  
ELEVATION: 10.11' (NAVD 1988)





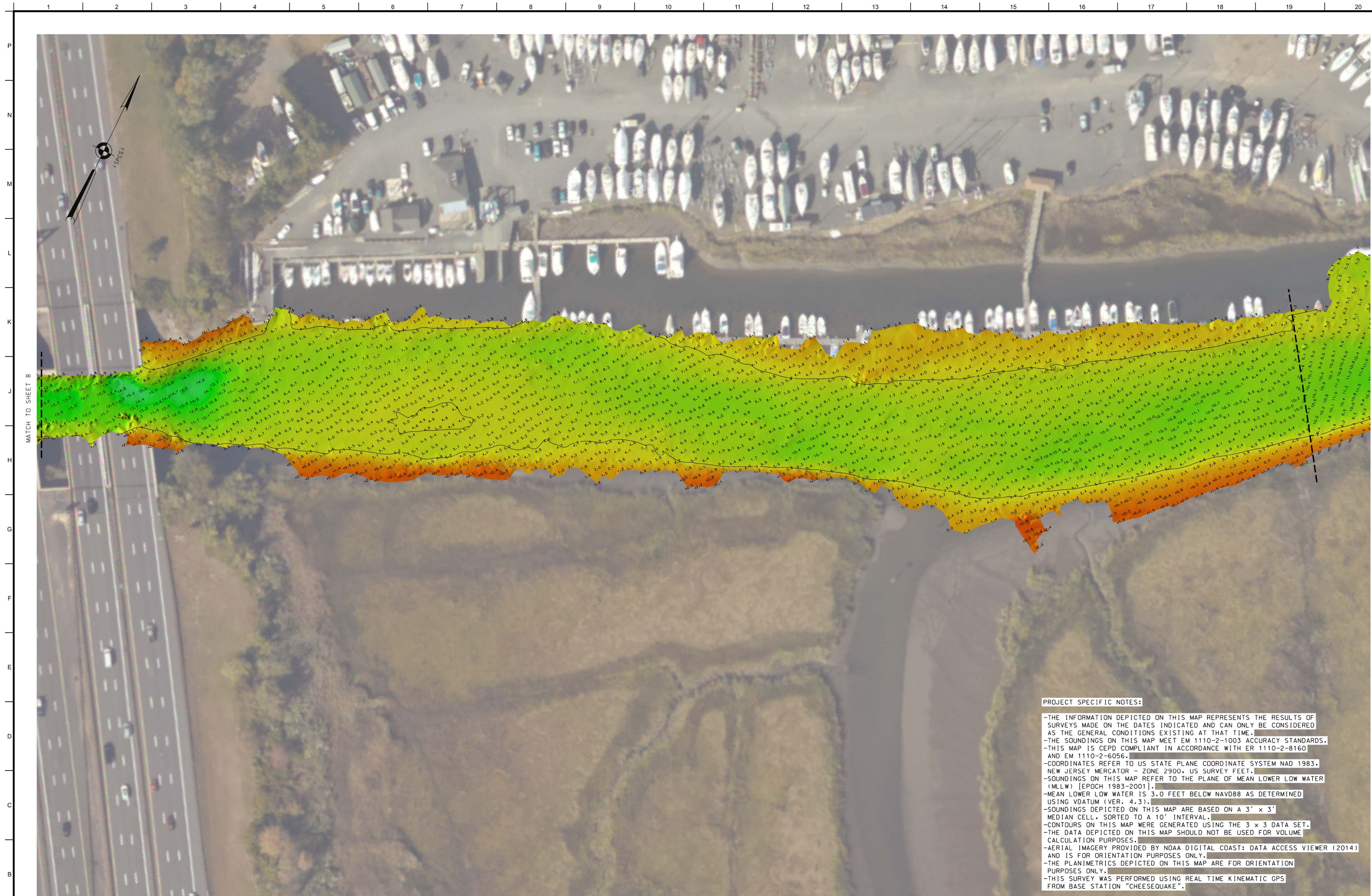












US ARMY CORPS  
OF ENGINEERS  
NEW YORK DISTRICT

		JDS
	PR	JDS
	MP	

09.11.15 AUG 2022

REQ. NO./FILE NO.: 5213

SCALE: ONE INCH = 50 FEET

FIELD BOOKS:

APPROVED: J. McKELVEY

FIELD CARTOGRAPHER

APPROVED: M. FORIE  
CIVIL ENGINEERING TECHNICIAN

APPROVED: P. BHADUR

18 AUG 22

DEPARTMENT OF THE ARMY  
U.S. ARMY CORPS OF ENGINEERS  
NEW YORK DISTRICT

YORK, NEW YORK 102

SURVEY SECTION  
CENAN-OP-SS

CHEESEWAKE CREEK  
NEW JERSEY

NEW JERSEY

CONDITION SURVEY

VH-107

7 OF 14























