

SHEET 2

SHEET 4

SHEET 5


PROJECT SPECIFIC NOTES:

- THE INFORMATION DEPICTED ON THIS MAP REPRESENTS THE RESULTS OF SURVEYS MADE ON THE DATES INDICATED AND CAN ONLY BE CONSIDERED AS THE GENERAL CONDITIONS EXISTING AT THAT TIME.
- THE SOUNDINGS ON THIS MAP MEET EM 1110-2-1003 ACCURACY STANDARDS.
- THIS MAP IS CEPD COMPLIANT IN ACCORDANCE WITH ER 1110-2-8160 AND EM 1110-2-6056.
- COORDINATES REFER TO US STATE PLANE COORDINATE SYSTEM NAD 1983, NEW JERSEY MERCATOR - ZONE 2900, US SURVEY FEET.
- SOUNDINGS ON THIS MAP REFER TO THE PLANE OF MEAN LOWER LOW WATER (MLLW) [EPOCH 1983-2001].
- MEAN LOWER LOW WATER IS 2-9 FEET BELOW NAVD88 AS DETERMINED USING DATUM 1983 (VDATUM 4-3).
- SOUNDINGS DEPICTED ON THIS MAP ARE BASED ON A 3' x 3' MEDIAN CELL, SORTED TO A 30' INTERVAL.
- CONTOURS ON THIS MAP WERE GENERATED USING THE 3 x 3 DATA SET.
- THE DATA DEPICTED ON THIS MAP SHOULD NOT BE USED FOR VOLUME CALCULATION PURPOSES.
- AERIAL IMAGERY PROVIDED BY NYGIN 2020 AND IS FOR ORIENTATION PURPOSES ONLY.
- THIS SURVEY WAS PERFORMED USING REAL TIME KINEMATIC GPS FROM STATION "NYDOT RTN AND RTK KEYPORT".

NSRS BENCHMARK

BENCHMARK: 853 1526 B TIDAL (PID:KV3541)  
ELEVATION: 21.96' (NAVD 1988)

| LOCAL CONTROL DATA |              |
|--------------------|--------------|
| BENCHMARK: WALNUT  | (PID:KV0757) |
| ELEVATION: 7.69'   | (NAVD 1988)  |



US ARMY CORPS  
OF ENGINEERS  
NEW YORK DISTRICT

[illegible]

|                                      |  |
|--------------------------------------|--|
| <b>SCALE:</b><br>ONE INCH = 500 FEET | <b>DATES OF SURVEY:</b><br>16-17 AUGUST 2022 |
| <b>FIELD BOOKS:</b><br>N/A           | <b>REQ. NO./FILE NO.:</b> 5193/AL            |

|           |                   |                              |
|-----------|-------------------|------------------------------|
| APPROVED: | J. MCKELVEY       | FIELD CARTOGRAPHER           |
| APPROVED: | M. FORTE          | CIVIL ENGINEERING TECHNICIAN |
| APPROVED: | P. BHADUR         | LEAD CARTOGRAPHER            |
| APPROVED: | J. MRJAZ          | DEPUTY CHIEF OF SURVEY       |
| DATE:     | 13 SEPTEMBER 2022 |                              |

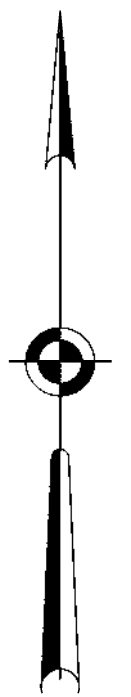
DEPARTMENT OF THE ARMY  
U.S. ARMY CORPS OF ENGINEERS  
NEW YORK DISTRICT  
NEW YORK, NEW YORK 10278

OPERATIONS DIVISION  
SURVEY SECTION  
CENAN--OP--SS

MATAWAN CREEK  
MATAWAN NEW JERSEY  
CONDITION SURVEY

VH-101

1 OF 5







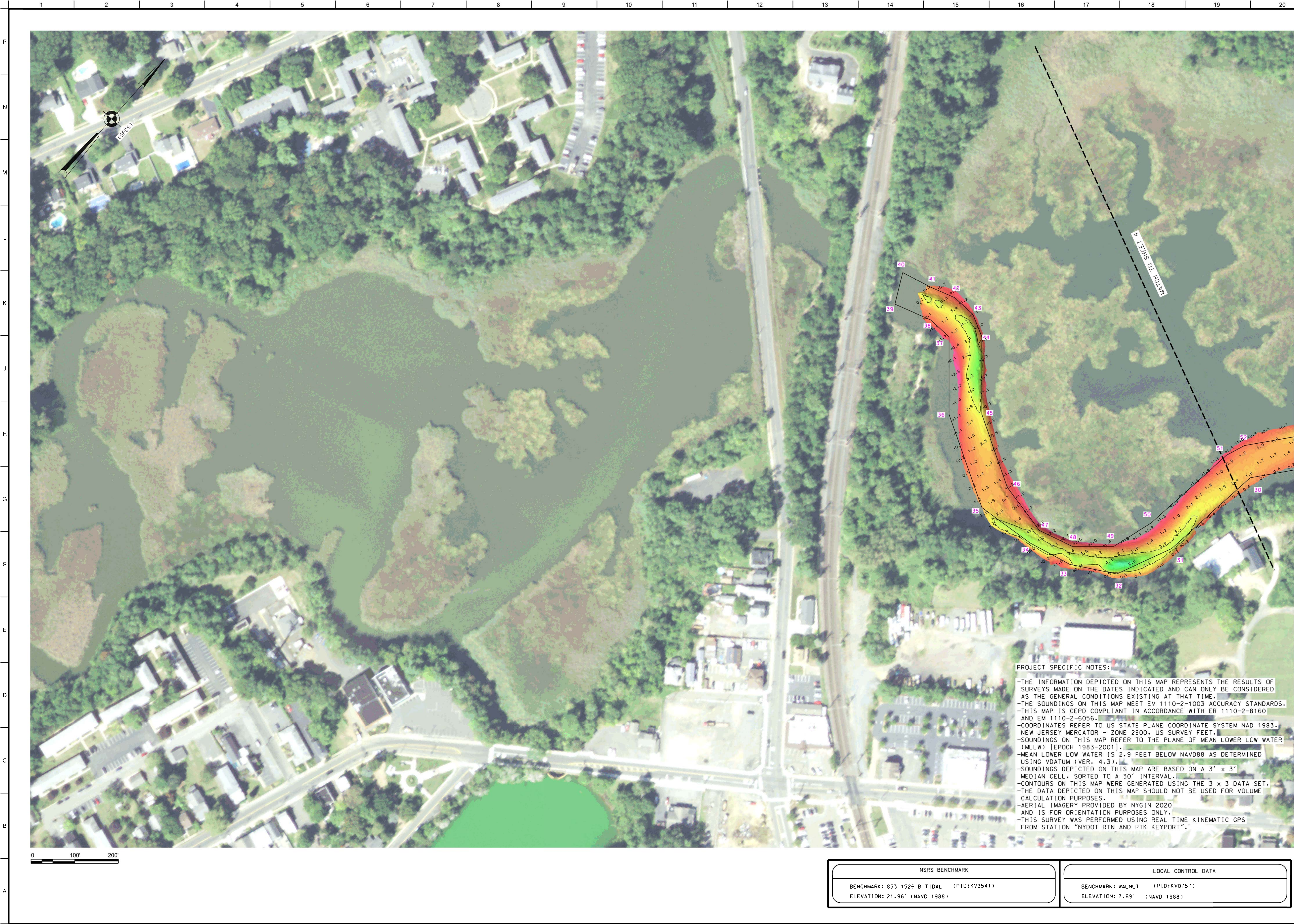













0 100' 200'

PROJECT SPECIFIC NOTES:

- THE INFORMATION DEPICTED ON THIS MAP REPRESENTS THE RESULTS OF SURVEYS MADE ON THE DATES INDICATED AND CAN ONLY BE CONSIDERED AS THE GENERAL CONDITIONS EXISTING AT THAT TIME.
- THE SOUNDINGS ON THIS MAP MEET EM 1110-2-1003 ACCURACY STANDARDS.
- THIS MAP IS CEPD COMPLIANT IN ACCORDANCE WITH ER 1110-2-8160 AND EM 1110-2-6056.
- COORDINATES REFER TO US STATE PLANE COORDINATE SYSTEM NAD 1983, NEW JERSEY MERCATOR - ZONE 2900, US SURVEY FEET.
- SOUNDINGS ON THIS MAP REFER TO THE PLANE OF MEAN LOWER LOW WATER (MLLW) [EPOCH 1983-2001].
- MEAN LOWER LOW WATER IS 2.9 FEET BELOW NAVD88 AS DETERMINED USING VDUTUM (VER. 4.3).
- SOUNDINGS DEPICTED ON THIS MAP ARE BASED ON A 3' x 3' MEDIAN CELL, SORTED TO A 30" INTERVAL.
- CONTOURS ON THIS MAP WERE GENERATED USING THE 3 x 3 DATA SET.
- THE DATA DEPICTED ON THIS MAP SHOULD NOT BE USED FOR VOLUME CALCULATION PURPOSES.
- AERIAL IMAGERY PROVIDED BY NYGIN 2020 AND IS FOR ORIENTATION PURPOSES ONLY.
- THIS SURVEY WAS PERFORMED USING REAL TIME KINEMATIC GPS FROM STATION "NYDOT RTN AND RTK KEYPORT".

| NSRS BENCHMARK  | LOCAL CONTROL DATA   |
|---|--|
| BENCHMARK: 853 1526 B TIDAL (PID:KV3541)<br>ELEVATION: 21.96' (NAVD 1988) | BENCHMARK: WALNUT (PID:KVO757)<br>ELEVATION: 7.69' (NAVD 1988) |



US ARMY CORPS OF ENGINEERS  
NEW YORK DISTRICT

|              |                     |                  |                   |                             |
|--------------|---------------------|------------------|-------------------|-----------------------------|
| SCALE:       | ONE INCH = 100 FEET | DATES OF SURVEY: | 16-17 AUGUST 2022 | REQ. NO./FILE NO.: 15193/AL |
| FIELD BOOKS: | N/A                 |                  |                   |                             |

|           |                                   |                |                                    |
|-----------|-----------------------------------|----------------|------------------------------------|
| APPROVED: | J. MCKELVEY<br>FIELD CARTOGRAPHER | APPROVED:      | M. FORTE<br>ENGINEERING TECHNICIAN |
| APPROVED: | P. BALDUS<br>LEAD CARTOGRAPHER    | APPROVED:      | J. MGAZ<br>DEPUTY CHIEF OF SURVEY  |
| DATE:     |                                   | 18 AUGUST 2022 |                                    |

DEPARTMENT OF THE ARMY  
U.S. ARMY CORPS OF ENGINEERS  
NEW YORK DISTRICT  
NEW YORK, NEW YORK 10278

OPERATIONS DIVISION  
SURVEY SECTION  
CENAN-OP-SS

MATAWAN CREEK  
NEW JERSEY

CONDITION SURVEY

VH-105

5 OF 5