

US ARMY CORPS OF ENGINEERS
NEW YORK DISTRICT

	ESD-JHS:DM
	DM
	MP

DATE OF SURVEY:
25 OCTOBER 2022
31 OCTOBER 2022
15 NOVEMBER 2022

REG. NO./FILE NO.: 5233/NI/13

SCALE:
ONE INCH = 200 FEET
FIELD BOOKS:
DNA 10

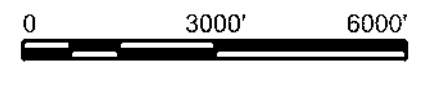
APPROVED: MCELVEY, J. FIELD CARTOGRAPHER
APPROVED: M. FORTE CIVIL ENGINEERING TECHNICIAN
APPROVED: P. BLODIER LEAD CARTOGRAPHER
APPROVED: J. MRGAZ CHIEF OF SURVEY
DATE: 01 DECEMBER 2022

DEPARTMENT OF THE ARMY
U.S. ARMY CORPS OF ENGINEERS
NEW YORK DISTRICT
NEW YORK, NEW YORK 10278
OPERATIONS DIVISION
SURVEYS AND MAPPING BRANCH
CENAN-OP-S

NEW YORK HARBOR, NEW YORK
MAIN SHIP CHANNEL
CONDITION SURVEY

VH-101
1 OF 7

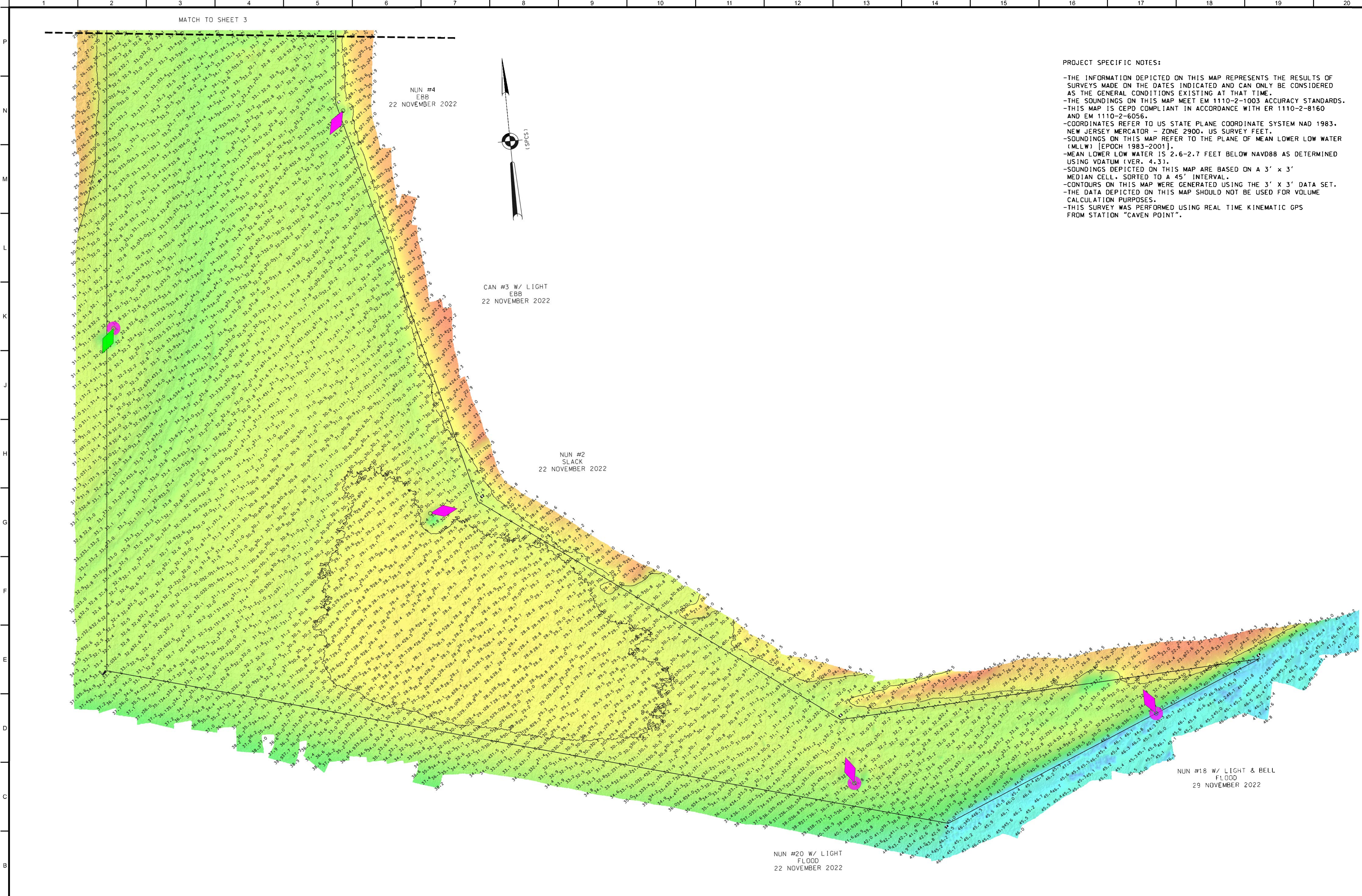
PROJECT SPECIFIC NOTES:
 -THE INFORMATION DEPICTED ON THIS MAP REPRESENTS THE RESULTS OF SURVEYS MADE ON THE DATES INDICATED AND CAN ONLY BE CONSIDERED AS THE GENERAL CONDITIONS EXISTING AT THAT TIME.
 -THE SOUNDINGS ON THIS MAP MEET EM 1110-2-1003 ACCURACY STANDARDS.
 -THIS MAP IS CEPD COMPLIANT IN ACCORDANCE WITH ER 1110-2-8160 AND EM 1110-2-6056.
 -COORDINATES REFER TO US STATE PLANE COORDINATE SYSTEM NAD 1983, NEW JERSEY MERCATOR - ZONE 2900, US SURVEY FEET.
 -SOUNDINGS ON THIS MAP REFER TO THE PLANE OF MEAN LOWER LOW WATER (MLLW) [EPOCH 1983-2001].
 -MEAN LOWER LOW WATER IS 2.6-2.7 FEET BELOW NAVD88 AS DETERMINED USING VDATUM (VER. 4.3).
 -SOUNDINGS DEPICTED ON THIS MAP ARE BASED ON A 3' x 3' MEDIAN CELL, SORTED TO A 45' INTERVAL.
 -CONTOURS ON THIS MAP WERE GENERATED USING THE 3' x 3' DATA SET.
 -THE DATA DEPICTED ON THIS MAP SHOULD NOT BE USED FOR VOLUME CALCULATION PURPOSES.
 -THIS SURVEY WAS PERFORMED USING REAL TIME KINEMATIC GPS FROM STATION "CAVEN POINT".



LOCAL CONTROL DATA
 BENCHMARK: SIMPSON 2 RM3 (KV0707)
 ELEVATION: 6.85' (NAVD 1988)

NSRS BENCHMARK
 BENCHMARK: SIMPSON 2 (KV0709)
 ELEVATION: 6.92' (NAVD 1988)

MATCH TO SHEET 3



PROJECT SPECIFIC NOTES:

- THE INFORMATION DEPICTED ON THIS MAP REPRESENTS THE RESULTS OF SURVEYS MADE ON THE DATES INDICATED AND CAN ONLY BE CONSIDERED AS THE GENERAL CONDITIONS EXISTING AT THAT TIME.
- THE SOUNDINGS ON THIS MAP MEET EM 1110-2-1003 ACCURACY STANDARDS.
- THIS MAP IS CEPO COMPLIANT IN ACCORDANCE WITH ER 1110-2-8160 AND EM 1110-2-6056.
- COORDINATES REFER TO US STATE PLANE COORDINATE SYSTEM NAD 1983, NEW JERSEY MERCATOR - ZONE 2900, US SURVEY FEET.
- SOUNDINGS ON THIS MAP REFER TO THE PLANE OF MEAN LOWER LOW WATER (MLLW) [EPOCH 1983-2001].
- MEAN LOWER LOW WATER IS 2.6-2.7 FEET BELOW NAVD88 AS DETERMINED USING VDATUM (VER. 4.3).
- SOUNDINGS DEPICTED ON THIS MAP ARE BASED ON A 3' x 3' MEDIAN CELL, SORTED TO A 45' INTERVAL.
- CONTOURS ON THIS MAP WERE GENERATED USING THE 3' x 3' DATA SET.
- THE DATA DEPICTED ON THIS MAP SHOULD NOT BE USED FOR VOLUME CALCULATION PURPOSES.
- THIS SURVEY WAS PERFORMED USING REAL TIME KINEMATIC GPS FROM STATION "CAVEN POINT".



ESD-JHS:DM
MP

DATES OF SURVEY:	25 OCTOBER 2022 31 OCTOBER 2022 15 NOVEMBER 2022
SCALE:	ONE INCH = 200 FEET
FIELD BOOKS:	DNA 10
RED. NO./FILE NO.:	15233/NI/13

APPROVED:	MCKEVEY, J. FIELD CARTOGRAPHER
APPROVED:	M. FORTE CIVIL ENGINEERING TECHNICIAN
APPROVED:	P. BLOOMER LEAD CARTOGRAPHER
APPROVED:	J. MRAZ BRANCH CHIEF OF SURVEY
DATE:	01 DECEMBER 2022

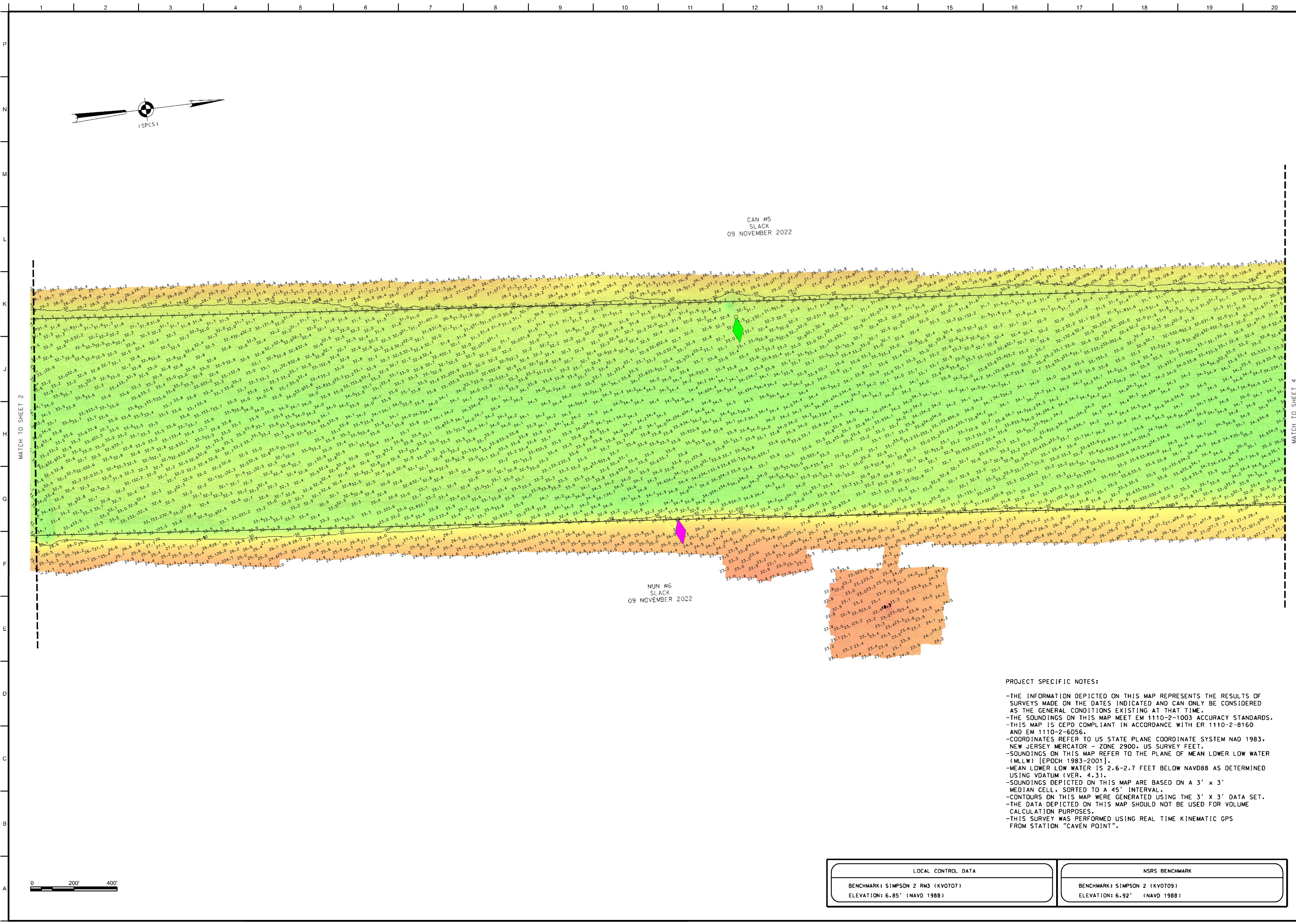
DEPARTMENT OF THE ARMY
U.S. ARMY CORPS OF ENGINEERS
NEW YORK DISTRICT
NEW YORK, NEW YORK 10278
OPERATIONS DIVISION
SURVEYS AND MAPPING BRANCH
CENM-OP-S

NEW YORK HARBOR, NEW YORK
MAIN SHIP CHANNEL
CONDITION SURVEY

VH-102
2 OF 7

LOCAL CONTROL DATA
BENCHMARK: SIMPSON 2 RM3 (KV0707) ELEVATION: 6.85' (NAVD 1988)

NSRS BENCHMARK
BENCHMARK: SIMPSON 2 (KV0709) ELEVATION: 6.92' (NAVD 1988)



US ARMY CORPS OF ENGINEERS
NEW YORK DISTRICT

PR	ESD-JHS:DM
MP	

DATE OF SURVEY:
25 OCTOBER 2022
31 OCTOBER 2022
15 NOVEMBER 2022
15 NOVEMBER 2022

REQ. NO./FILE NO.: 15233/NI/3

SCALE:
ONE INCH = 200 FEET

FIELD BOOKS:
DINA 10

APPROVED: MCKELVEY, J. FIELD CARTOGRAPHER
APPROVED: M. FORBES CIVIL ENGINEERING TECHNICIAN
APPROVED: P. BALDWIN LEAD ENGINEER
APPROVED: J. WRAG DEPUTY CHIEF OF SURVEY

DATE: 01 DECEMBER 2022

DEPARTMENT OF THE ARMY
U.S. ARMY CORPS OF ENGINEERS
NEW YORK DISTRICT
NEW YORK, NEW YORK 10278

OPERATIONS DIVISION
SURVEYS AND MAPPING BRANCH
CENM-OP-S

NEW YORK HARBOR, NEW YORK
MAIN SHIP CHANNEL
CONDITION SURVEY

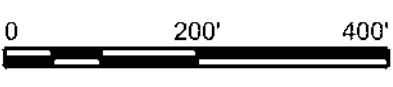
VH-103
3 OF 7

CAN #5
SLACK
09 NOVEMBER 2022

NUN #6
SLACK
09 NOVEMBER 2022

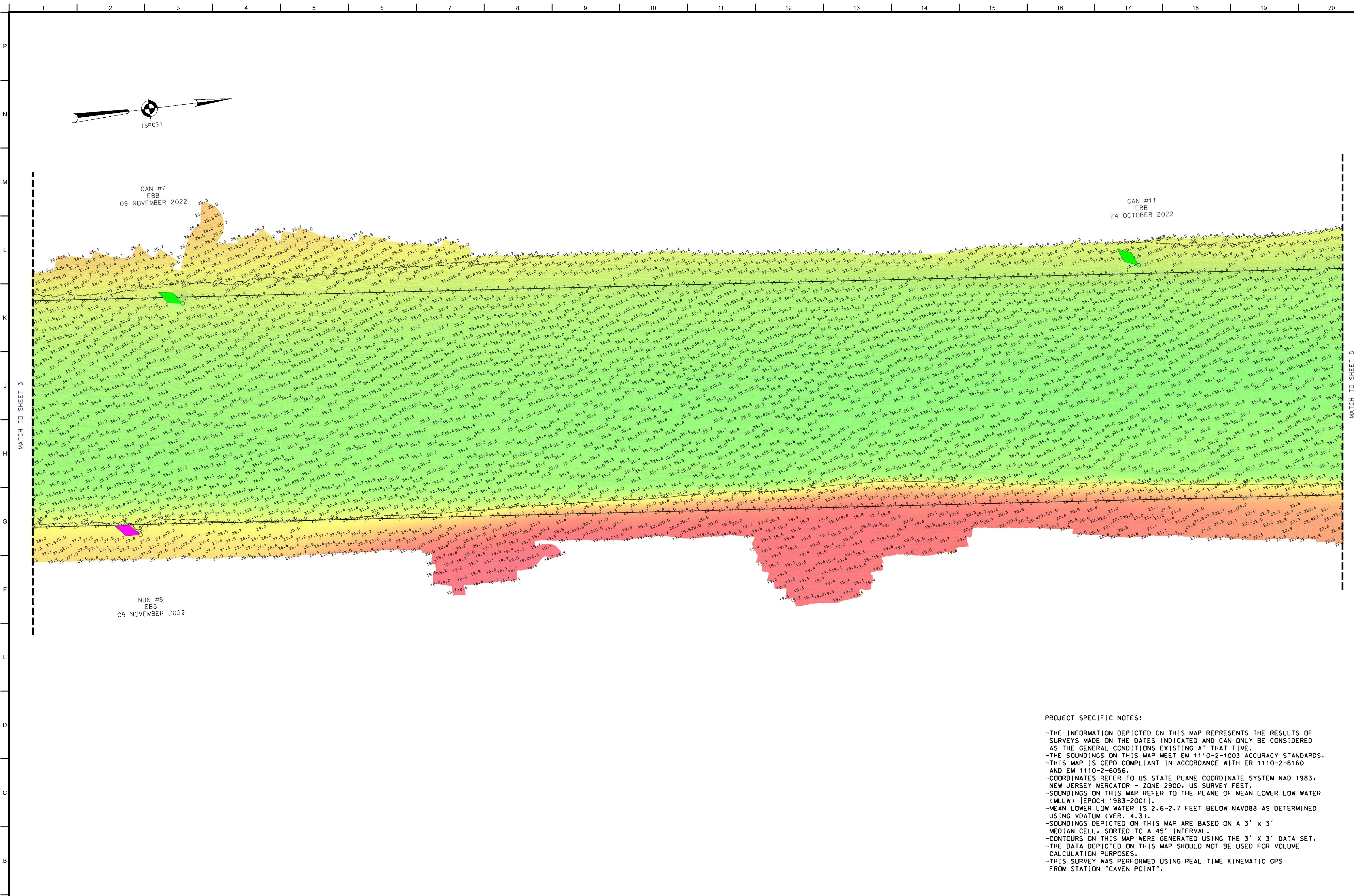
PROJECT SPECIFIC NOTES:

- THE INFORMATION DEPICTED ON THIS MAP REPRESENTS THE RESULTS OF SURVEYS MADE ON THE DATES INDICATED AND CAN ONLY BE CONSIDERED AS THE GENERAL CONDITIONS EXISTING AT THAT TIME.
- THE SOUNDINGS ON THIS MAP MEET EM 1110-2-1003 ACCURACY STANDARDS.
- THIS MAP IS CEPD COMPLIANT IN ACCORDANCE WITH ER 1110-2-8160 AND EM 1110-2-6056.
- COORDINATES REFER TO US STATE PLANE COORDINATE SYSTEM NAD 1983, NEW JERSEY MERCATOR - ZONE 2900, US SURVEY FEET.
- SOUNDINGS ON THIS MAP REFER TO THE PLANE OF MEAN LOWER LOW WATER (MLLW) [EPOCH 1983-2001].
- MEAN LOWER LOW WATER IS 2.6-2.7 FEET BELOW NAVD88 AS DETERMINED USING VDATUM (VER. 4.3).
- SOUNDINGS DEPICTED ON THIS MAP ARE BASED ON A 3' x 3' MEDIAN CELL, SORTED TO A 45° INTERVAL.
- CONTOURS ON THIS MAP WERE GENERATED USING THE 3' x 3' DATA SET.
- THE DATA DEPICTED ON THIS MAP SHOULD NOT BE USED FOR VOLUME CALCULATION PURPOSES.
- THIS SURVEY WAS PERFORMED USING REAL TIME KINEMATIC GPS FROM STATION "CAVEN POINT".



LOCAL CONTROL DATA
BENCHMARK: SIMPSON 2 RM3 (KVO707)
ELEVATION: 6.85' (NAVD 1988)

NSRS BENCHMARK
BENCHMARK: SIMPSON 2 (KVO709)
ELEVATION: 6.92' (NAVD 1988)



US ARMY CORPS OF ENGINEERS
NEW YORK DISTRICT

PR	ESD-JHS:DM
MP	

DATES OF SURVEY:
25 OCTOBER 2022
31 OCTOBER 2022
15 NOVEMBER 2022
23 NOVEMBER 2022

SCALE:
ONE INCH = 200 FEET

FIELD BOOKS:
DINA 10

APPROVED: MCKELVEY, J. FIELD CARTOGRAPHER
APPROVED: M. FORTE CIVIL ENGINEERING TECHNICIAN
APPROVED: P. BALDWIN LEAD CARTOGRAPHER
APPROVED: J. WRAZ DEPUTY CHIEF OF SURVEY
DATE: 01 DECEMBER 2022

DEPARTMENT OF THE ARMY
U.S. ARMY CORPS OF ENGINEERS
NEW YORK DISTRICT
NEW YORK, NEW YORK 10278

OPERATIONS DIVISION
SURVEYS AND MAPPING BRANCH
CENM-OP-S

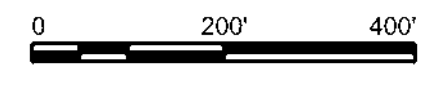
NEW YORK HARBOR, NEW YORK
MAIN SHIP CHANNEL
CONDITION SURVEY

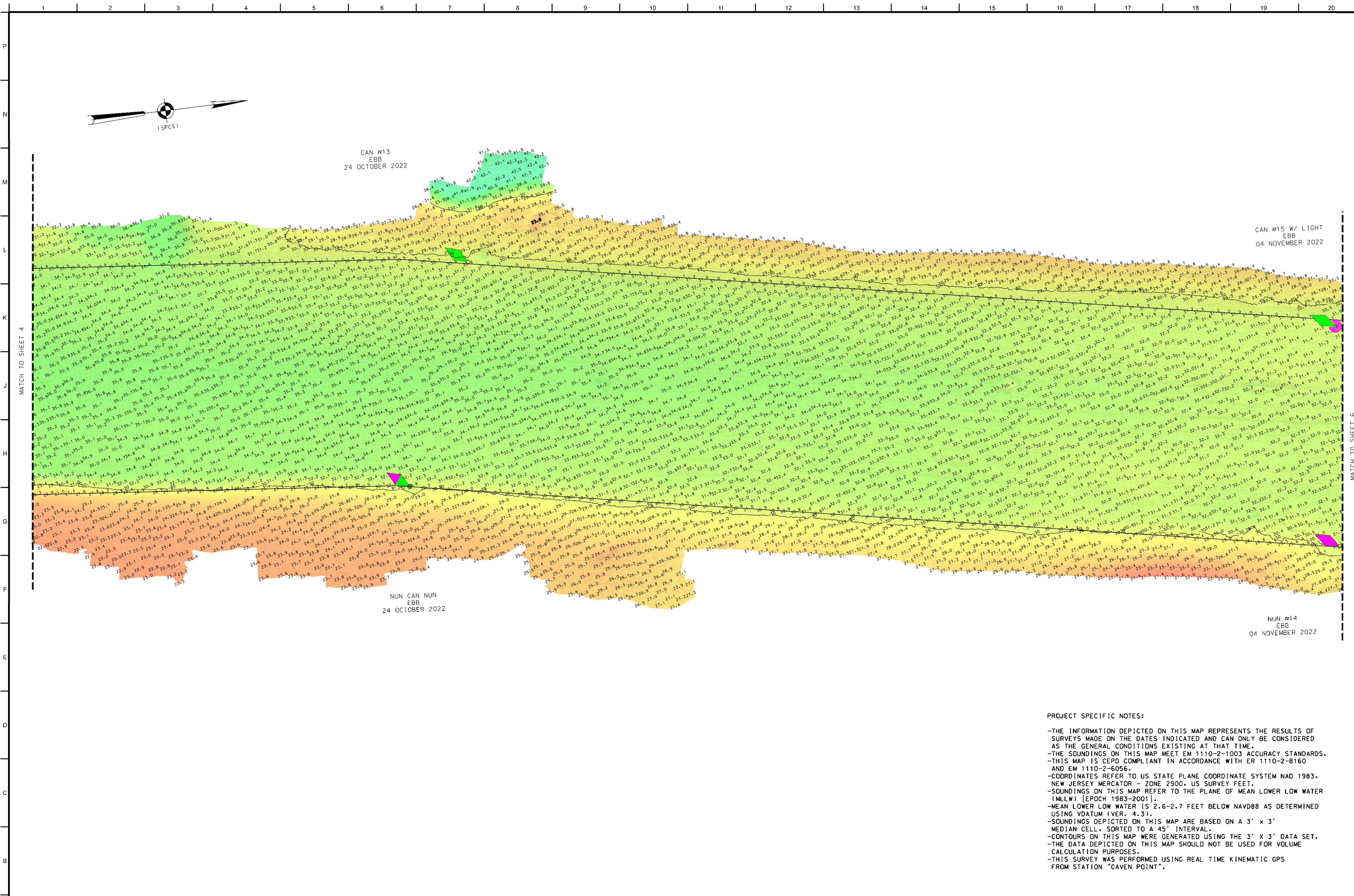
VH-104
4 OF 7

- PROJECT SPECIFIC NOTES:
- THE INFORMATION DEPICTED ON THIS MAP REPRESENTS THE RESULTS OF SURVEYS MADE ON THE DATES INDICATED AND CAN ONLY BE CONSIDERED AS THE GENERAL CONDITIONS EXISTING AT THAT TIME.
 - THE SOUNDINGS ON THIS MAP MEET EM 1110-2-1003 ACCURACY STANDARDS.
 - THIS MAP IS CEPD COMPLIANT IN ACCORDANCE WITH ER 1110-2-8160 AND EM 1110-2-6056.
 - COORDINATES REFER TO US STATE PLANE COORDINATE SYSTEM NAD 1983, NEW JERSEY MERCATOR - ZONE 2900, US SURVEY FEET.
 - SOUNDINGS ON THIS MAP REFER TO THE PLANE OF MEAN LOWER LOW WATER (MLLW) [EPOCH 1983-2001].
 - MEAN LOWER LOW WATER IS 2.6-2.7 FEET BELOW NAVD88 AS DETERMINED USING VDATUM (VER. 4.3).
 - SOUNDINGS DEPICTED ON THIS MAP ARE BASED ON A 3' x 3' MEDIAN CELL, SORTED TO A 45" INTERVAL.
 - CONTOURS ON THIS MAP WERE GENERATED USING THE 3' x 3' DATA SET.
 - THE DATA DEPICTED ON THIS MAP SHOULD NOT BE USED FOR VOLUME CALCULATION PURPOSES.
 - THIS SURVEY WAS PERFORMED USING REAL TIME KINEMATIC GPS FROM STATION "CAVEN POINT".

LOCAL CONTROL DATA
BENCHMARK: SIMPSON 2 RMS (KV0707)
ELEVATION: 6.85' (NAVD 1988)

NSRS BENCHMARK
BENCHMARK: SIMPSON 2 (KV0709)
ELEVATION: 6.92' (NAVD 1988)





US ARMY CORPS OF ENGINEERS
NEW YORK DISTRICT

PR	ESD-JHS:DM
MP	

DATES OF SURVEY:
25 OCTOBER 2022
31 OCTOBER 2022
15 NOV 23 - 29 NOVEMBER 2022

REG. NO./FILE NO.: 15233/NI/13

SCALE:
ONE INCH = 200 FEET

FIELD BOOKS:
DNA 10

APPROVED: MCKELVEY, J. FIELD CARTOGRAPHER
APPROVED: M. FORBES CIVIL ENGINEERING TECHNICIAN
APPROVED: P. BALDWIN LEAD CARTOGRAPHER
APPROVED: J. WRAG DEPUTY CHIEF OF SURVEY
DATE: 01 DECEMBER 2022

DEPARTMENT OF THE ARMY
U.S. ARMY CORPS OF ENGINEERS
NEW YORK DISTRICT
NEW YORK, NEW YORK 10278

OPERATIONS DIVISION
SURVEYS AND MAPPING BRANCH
CENM-OP-S

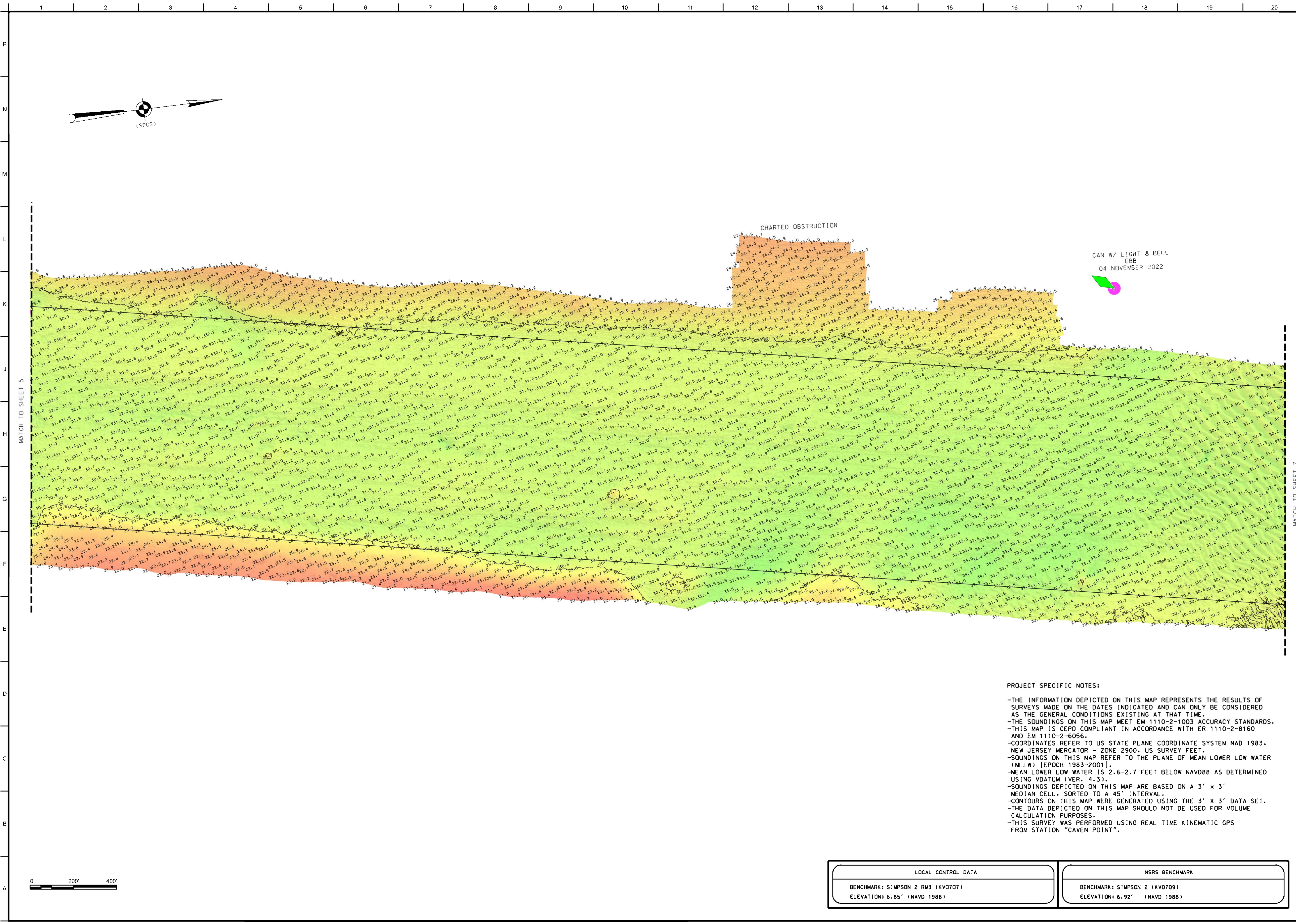
NEW YORK HARBOR, NEW YORK
MAIN SHIP CHANNEL
CONDITION SURVEY

VH-105
5 OF 7

- PROJECT SPECIFIC NOTES:
- THE INFORMATION DEPICTED ON THIS MAP REPRESENTS THE RESULTS OF SURVEYS MADE ON THE DATES INDICATED AND CAN ONLY BE CONSIDERED AS THE GENERAL CONDITIONS EXISTING AT THAT TIME.
 - THE SOUNDINGS ON THIS MAP MEET EM 1110-2-1003 ACCURACY STANDARDS.
 - THIS MAP IS CEPD COMPLIANT IN ACCORDANCE WITH ER 1110-2-8160 AND EM 1110-2-6056.
 - COORDINATES REFER TO US STATE PLANE COORDINATE SYSTEM NAD 1983, NEW JERSEY MERCATOR - ZONE 2900, US SURVEY FEET.
 - SOUNDINGS ON THIS MAP REFER TO THE PLANE OF MEAN LOWER LOW WATER (MLLW) [EPOCH 1983-2001].
 - MEAN LOWER LOW WATER IS 2.6-2.7 FEET BELOW NAVD88 AS DETERMINED USING VDATUM (VER. 4.3).
 - SOUNDINGS DEPICTED ON THIS MAP ARE BASED ON A 3' x 3' MEDIAN CELL, SORTED TO A 45' INTERVAL.
 - CONTOURS ON THIS MAP WERE GENERATED USING THE 3' x 3' DATA SET.
 - THE DATA DEPICTED ON THIS MAP SHOULD NOT BE USED FOR VOLUME CALCULATION PURPOSES.
 - THIS SURVEY WAS PERFORMED USING REAL TIME KINEMATIC GPS FROM STATION "CAVEN POINT".

LOCAL CONTROL DATA
BENCHMARK: SIMPSON 2 RM3 (KV0707)
ELEVATION: 6.85' (NAVD 1988)

NSRS BENCHMARK
BENCHMARK: SIMPSON 2 (KV0709)
ELEVATION: 6.92' (NAVD 1988)



US ARMY CORPS OF ENGINEERS
NEW YORK DISTRICT

PR	ESD-LHS:DM
MP	

DATE OF SURVEY:
25 OCTOBER 2022
31 OCTOBER 2022
15 NOV 2022 - 23 NOVEMBER 2022

SCALE:
ONE INCH = 200 FEET

FIELD BOOKS:
DNA 10

APPROVED: MCKELVEY, J. FIELD CARTOGRAPHER
APPROVED: M. FORBES CIVIL ENGINEERING TECHNICIAN
APPROVED: P. BALDWIN LEAD CARTOGRAPHER
APPROVED: J. WRAZ DEPUTY CHIEF OF SURVEY

DATE: 01 DECEMBER 2022

DEPARTMENT OF THE ARMY
U.S. ARMY CORPS OF ENGINEERS
NEW YORK DISTRICT
NEW YORK, NEW YORK 10278

OPERATIONS DIVISION
SURVEYS AND MAPPING BRANCH
CENM-OP-S

NEW YORK HARBOR, NEW YORK
MAIN SHIP CHANNEL
CONDITION SURVEY

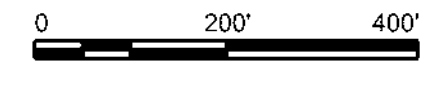
VH-106
6 OF 7

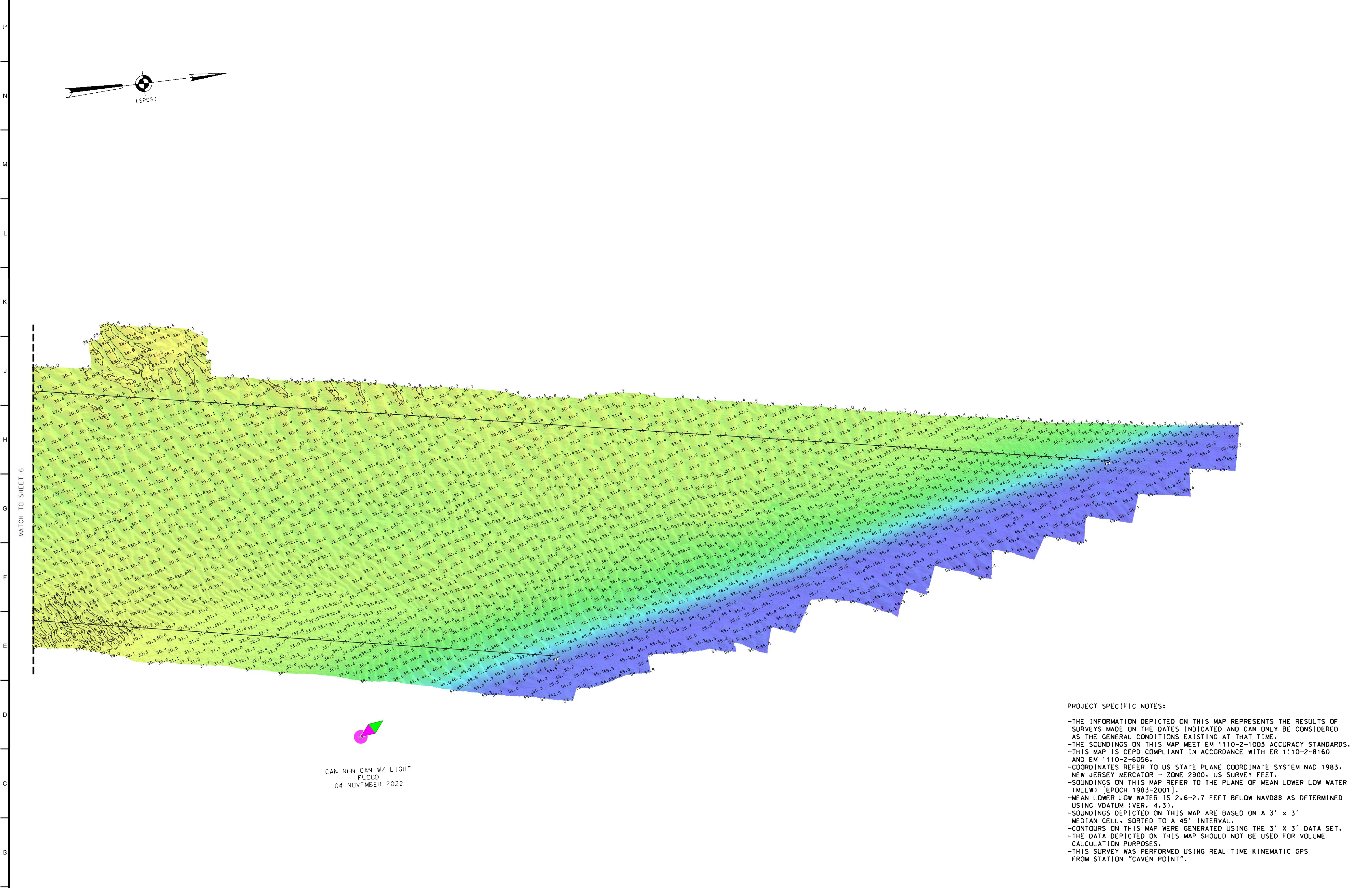
PROJECT SPECIFIC NOTES:

- THE INFORMATION DEPICTED ON THIS MAP REPRESENTS THE RESULTS OF SURVEYS MADE ON THE DATES INDICATED AND CAN ONLY BE CONSIDERED AS THE GENERAL CONDITIONS EXISTING AT THAT TIME.
- THE SOUNDINGS ON THIS MAP MEET EM 1110-2-1003 ACCURACY STANDARDS.
- THIS MAP IS CEPD COMPLIANT IN ACCORDANCE WITH ER 1110-2-8160 AND EM 1110-2-6056.
- COORDINATES REFER TO US STATE PLANE COORDINATE SYSTEM NAD 1983, NEW JERSEY MERCATOR - ZONE 2900, US SURVEY FEET.
- SOUNDINGS ON THIS MAP REFER TO THE PLANE OF MEAN LOWER LOW WATER (MLLW) [EPOCH 1983-2001]
- MEAN LOWER LOW WATER IS 2.6-2.7 FEET BELOW NAVD88 AS DETERMINED USING VDATUM (VER. 4.3).
- SOUNDINGS DEPICTED ON THIS MAP ARE BASED ON A 3' x 3' MEDIAN CELL, SORTED TO A 45' INTERVAL.
- CONTOURS ON THIS MAP WERE GENERATED USING THE 3' x 3' DATA SET.
- THE DATA DEPICTED ON THIS MAP SHOULD NOT BE USED FOR VOLUME CALCULATION PURPOSES.
- THIS SURVEY WAS PERFORMED USING REAL TIME KINEMATIC GPS FROM STATION "CAVEN POINT".

LOCAL CONTROL DATA
BENCHMARK: SIMPSON 2 RM3 (KV0707)
ELEVATION: 6.85' (NAVD 1988)

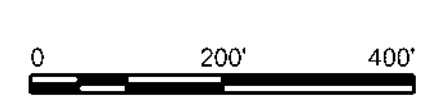
NSRS BENCHMARK
BENCHMARK: SIMPSON 2 (KV0709)
ELEVATION: 6.92' (NAVD 1988)





CAN NUN CAN W/ LIGHT
FLOOD
04 NOVEMBER 2022

PROJECT SPECIFIC NOTES:
-THE INFORMATION DEPICTED ON THIS MAP REPRESENTS THE RESULTS OF SURVEYS MADE ON THE DATES INDICATED AND CAN ONLY BE CONSIDERED AS THE GENERAL CONDITIONS EXISTING AT THAT TIME.
-THE SOUNDINGS ON THIS MAP MEET EM 1110-2-1003 ACCURACY STANDARDS.
-THIS MAP IS CEPD COMPLIANT IN ACCORDANCE WITH ER 1110-2-8160 AND EM 1110-2-6056.
-COORDINATES REFER TO US STATE PLANE COORDINATE SYSTEM NAD 1983, NEW JERSEY MERCATOR - ZONE 2900, US SURVEY FEET.
-SOUNDINGS ON THIS MAP REFER TO THE PLANE OF MEAN LOWER LOW WATER (MLLW) [EPOCH 1983-2001].
-MEAN LOWER LOW WATER IS 2.6-2.7 FEET BELOW NAVD88 AS DETERMINED USING VDATUM (VER. 4.3).
-SOUNDINGS DEPICTED ON THIS MAP ARE BASED ON A 3' x 3' MEDIAN CELL, SORTED TO A 45' INTERVAL.
-CONTOURS ON THIS MAP WERE GENERATED USING THE 3' x 3' DATA SET.
-THE DATA DEPICTED ON THIS MAP SHOULD NOT BE USED FOR VOLUME CALCULATION PURPOSES.
-THIS SURVEY WAS PERFORMED USING REAL TIME KINEMATIC GPS FROM STATION "CAVEN POINT".



LOCAL CONTROL DATA
BENCHMARK: SIMPSON 2 RM3 (KVO707)
ELEVATION: 6.85' (NAVD 1988)

NSRS BENCHMARK
BENCHMARK: SIMPSON 2 (KVO709)
ELEVATION: 6.92' (NAVD 1988)



US ARMY CORPS OF ENGINEERS
NEW YORK DISTRICT

PR	ESD-JHS:DM
MP	

DATES OF SURVEY:
25 OCTOBER 2022
31 OCTOBER 2022
15 NOVEMBER 2022

RED. NO./FILE NO.: 15233/NI/NS

SCALE:
ONE INCH = 200 FEET

FIELD BOOKS:
DNA 10

APPROVED: MCKEVEY, J. FIELD CARTOGRAPHER

APPROVED: M. FORTE CIVIL ENGINEERING TECHNICIAN

APPROVED: P. BLODUR LEAD CARTOGRAPHER

APPROVED: J. WRAZ GRANTY CHIEF OF SURVEY

DATE: 01 DECEMBER 2022

DEPARTMENT OF THE ARMY
U.S. ARMY CORPS OF ENGINEERS
NEW YORK DISTRICT
NEW YORK, NEW YORK 10278

OPERATIONS DIVISION
SURVEYS AND MAPPING BRANCH
CENM-OP-S

NEW YORK HARBOR, NEW YORK
MAIN SHIP CHANNEL
CONDITION SURVEY