

US ARMY CORPS  
OF ENGINEERS  
NEW YORK DISTRICT

[illegible]

DATES OF SURVEY:  
17, 21-22 NOV 202

SCALE:  
ONE INCH = 100 FEET

APPROVED: P. KEARNS  
FIELD CARTOGRAPHER

DEPARTMENT OF THE ARMY  
U. S. ARMY CORPS OF ENGINEERS

NEW YORK AND NEW JERSEY CHANNELS

VH-103

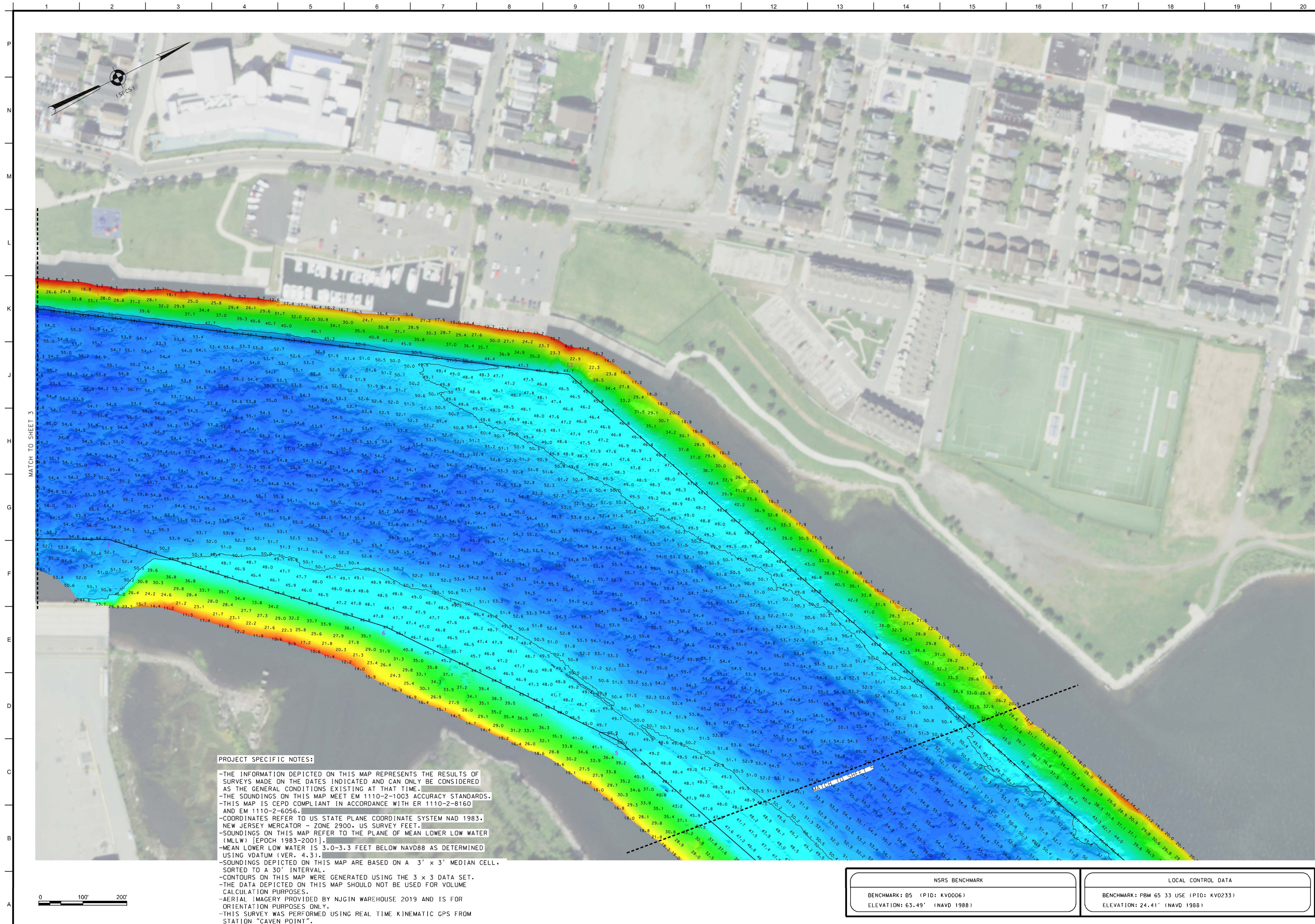
3 OF 7

PLANS AND SPECS SURVEY

PROJECT SPECIFIC NOTES:

- THE INFORMATION DEPICTED ON THIS MAP REPRESENTS THE RESULTS OF SURVEYS MADE ON THE DATES INDICATED AND CAN ONLY BE CONSIDERED AS THE GENERAL CONDITIONS EXISTING AT THAT TIME.
- THE SOUNDINGS ON THIS MAP MEET EM 1110-2-1003 ACCURACY STANDARDS.
- THIS MAP IS CEPD COMPLIANT IN ACCORDANCE WITH ER 1110-2-8160 AND EM 1110-2-6056.
- COORDINATES REFER TO US STATE PLANE COORDINATE SYSTEM NAD 1983, NEW JERSEY MERCATOR - ZONE 2900, US SURVEY FEET.
- SOUNDINGS ON THIS MAP REFER TO THE PLANE OF MEAN LOWER LOW WATER (MLLW) [EPOCH 1983-2001].
- MEAN LOWER LOW WATER IS 3.0-3.3 FEET BELOW NAVD88 AS DETERMINED USING DATUM (VER. 4.3).
- SOUNDINGS DEPICTED ON THIS MAP ARE BASED ON A 3' x 3' MEDIAN CELL, SORTED TO A 30' INTERVAL.
- CONTOURS ON THIS MAP WERE GENERATED USING THE 3 x 3 DATA SET.
- THE DATA DEPICTED ON THIS MAP SHOULD NOT BE USED FOR VOLUME CALCULATION PURPOSES.
- AERIAL IMAGERY PROVIDED BY NUGIN WAREHOUSE 2019 AND IS FOR ORIENTATION PURPOSES ONLY.
- THIS SURVEY WAS PERFORMED USING REAL TIME KINEMATIC GPS FROM STATION "CAVEN POINT".





US ARMY CORPS  
OF ENGINEERS  
NEW YORK DISTRICT

	JHS, CM
	CM, JDS, JHS
PR	
MP	

SCALE: ONE INCH = 100 FEET	DATES OF SURVEY: 17. 21-22 NOV. 2022
FIELD BOOKS: DN10	REG. NO./FILE NO.: 5242/N3

APPROVED:	P. KEARNS	FIELD CARTOGRAPHER
APPROVED:	M. FORTE	CIVIL ENGINEERING TECHNICIAN
APPROVED:	P. BHADUR	LEAD CARTOGRAPHER
APPROVED:	J. MRAZ	DEPUTY CHIEF OF SURVEY
DATE:	29 NOVEMBER 2022	

DEPARTMENT OF THE ARMY  
U.S. ARMY CORPS OF ENGINEERS  
NEW YORK DISTRICT  
NEW YORK, NEW YORK 10278

---

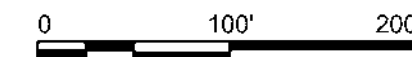
OPERATIONS DIVISION  
SURVEY BRANCH  
CENAN-OP--SS

NEW YORK AND NEW JERSEY CHANNELS  
ARTHUR KILL  
PLANS AND SPECS SURVEY

VH-104

4 OF 7





BENCHMARK: BS (PID: KV0006)  
ELEVATION: 63.49' (NAVD 1988)

BENCHMARK: PBM 65 33 USE (PID: KVO233)  
ELEVATION: 24.41' (NAVD 1988)

- THE INFORMATION DEPICTED ON THIS MAP REPRESENTS THE RESULTS OF SURVEYS MADE ON THE DATES INDICATED AND CAN ONLY BE CONSIDERED AS THE GENERAL CONDITIONS EXISTING AT THAT TIME.
- THE SOUNDINGS ON THIS MAP MEET EM 1110-2-1003 ACCURACY STANDARDS.
- THIS MAP IS CEPD COMPLIANT IN ACCORDANCE WITH ER 1110-2-8160 AND EM 1110-2-6056.
- COORDINATES REFER TO US STATE PLANE COORDINATE SYSTEM NAD 1983, NEW JERSEY MERCATOR - ZONE 2900, US SURVEY FEET.
- SOUNDINGS ON THIS MAP REFER TO THE PLANE OF MEAN LOWER LOW WATER (MLW) [EPOCH 1983-2001].
- MEAN LOWER LOW WATER IS 3.0-3.3 FEET BELOW NAVD88 AS DETERMINED USING VDATUM (VER. 4.3).
- SOUNDINGS DEPICTED ON THIS MAP ARE BASED ON A 3' x 3' MEDIAN CELL, SORTED TO A 30' INTERVAL.
- CONTOUR ON THIS MAP WERE GENERATED USING THE 3 x 3 DATA SET.
- THE DATA DEPICTED ON THIS MAP SHOULD NOT BE USED FOR VOLUME CALCULATION PURPOSES.
- AERIAL IMAGERY PROVIDED BY NUGIN WAREHOUSE 2019 AND IS FOR ORIENTATION PURPOSES ONLY.
- THIS SURVEY WAS PERFORMED USING REAL TIME KINEMATIC GPS FROM STATION "CAVEN POINT".



PR	JHS, CM
MP	CM, JDS, JHS

ES OF SURVEY:  
17: 21-22 NOV 202

REQ. NO./FILE NO.: 5242/N3

SCALE:

FIELD BOOKS:

APPROVED: P. KEARNS

APPROVED: M. FORTE

APPROVED: P. BHADUR

APPROVED: J. MRAZ

DATE: 29 NOVEMBER 2022

DEPARTMENT OF THE ARMY  
S. ARMY CORPS OF ENGINEERS  
NEW YORK DISTRICT  
NEW YORK, NEW YORK 10278

---

OPERATIONS DIVISION

SURVEY BRANCH  
CENAN-OP-SS

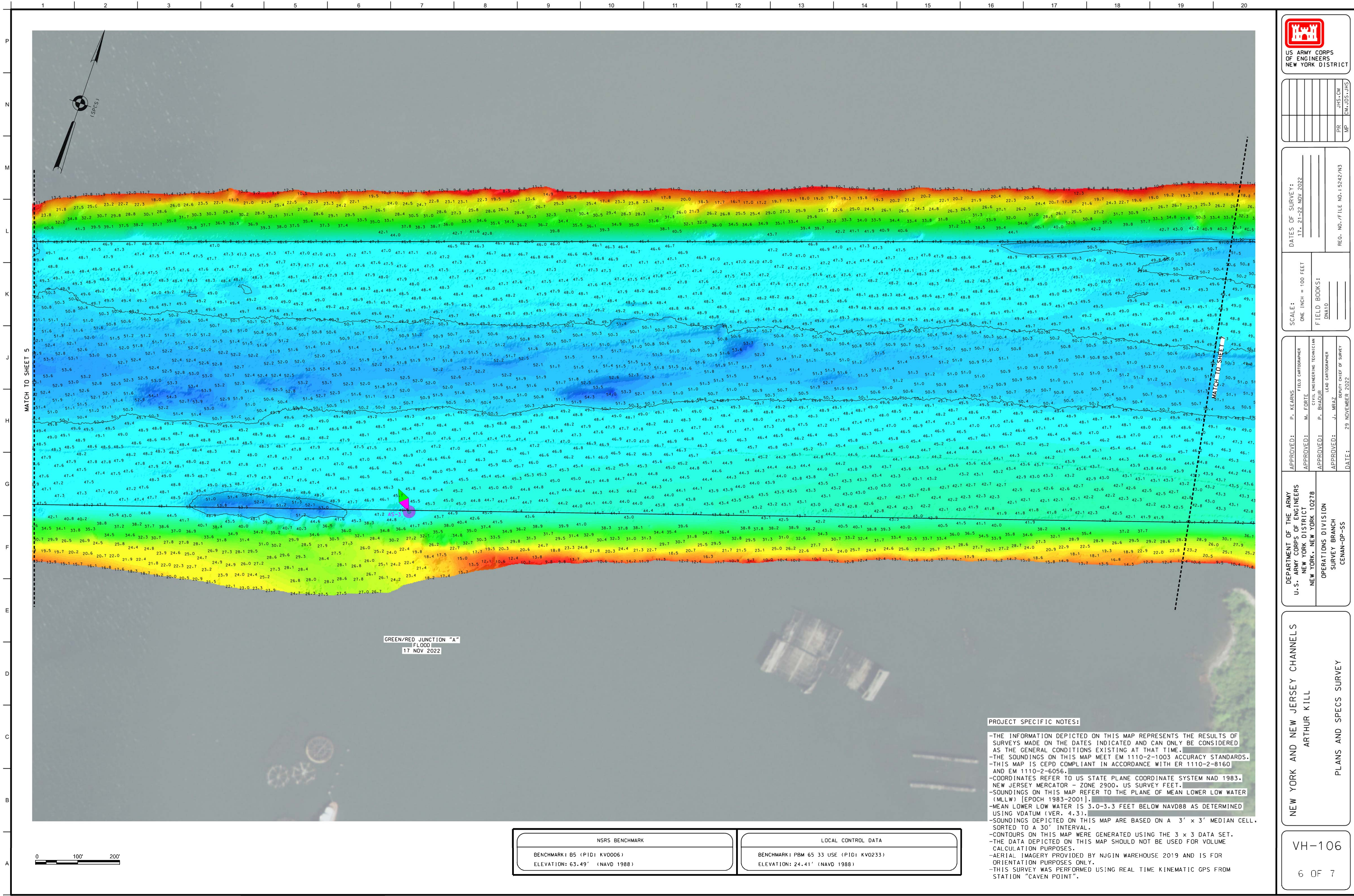
NEW YORK AND NEW JERSEY CHANNELS  
ARTHUR KILL

## PLANS AND SPECS SURVEY

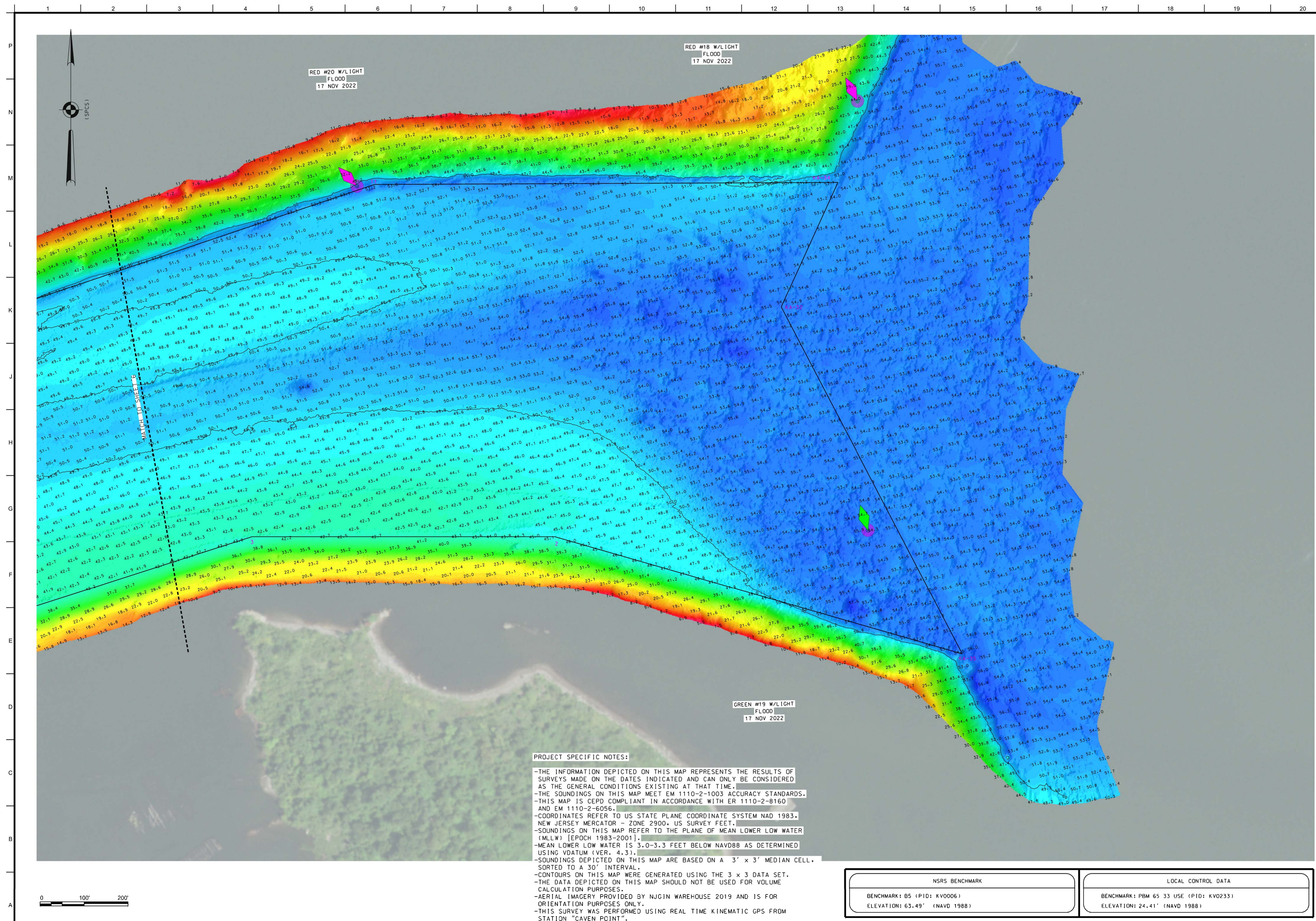
VH-105

5 OF 7









US ARMY CORPS  
OF ENGINEERS  
NEW YORK DISTRICT

	JHS, CM
	CM, JDS, JHS
PR	
MP	

17. 21-22 NOV 202

SCALE:  
ONE INCH = 100

APPROVED:	P. KEARNS	FIELD CARTOGRAPHER
APPROVED:	M. FORTE	
APPROVED:	P. BHADUR	CIVIL ENGINEERING TECHNICIAN
APPROVED:	J. MRAZ	LEAD CARTOGRAPHER
DATE:	29 NOVEMBER 2022	

DEPARTMENT OF THE ARMY  
U.S. ARMY CORPS OF ENGINEERS  
NEW YORK DISTRICT  
NEW YORK, NEW YORK 10278

---

OPERATIONS DIVISION  
SURVEY BRANCH  
CENAN-OP--SS

NEW YORK AND NEW JERSEY CHANNELS  
ARTHUR KILL  
PLANS AND SPECS SURVEY

VH-107

7 OF 7