

US ARMY CORPS
OF ENGINEERS
NEW YORK DISTRICT

[illegible]

DATES OF SURVEY:

6.7.9.12.14 JUNE 2023

REQ. NO./FILE NO.:5308/N3/N4

SCALE:

ONE INCH = 100 FEET

FIELD BOOKS:

N/A

APPROVED: J. BERTOLOTTI

FIELD CARTOGRAPHER

APPROVED: P. BHADUR
CIVIL ENGINEERING TECHNICIAN

CHIEF OF SURVEY SUPPORT SECTION

DEPUTY CHIEF OF SURVEYS AND MAPPING BRANCH

DEPARTMENT OF THE ARMY
S. ARMY CORPS OF ENGINEERS

NEW YORK DISTRICT

NEW YORK: NEW YORK 10278
OPERATIONS DIVISION

OPERATIONS DIVISION

CENAN-OP-SS

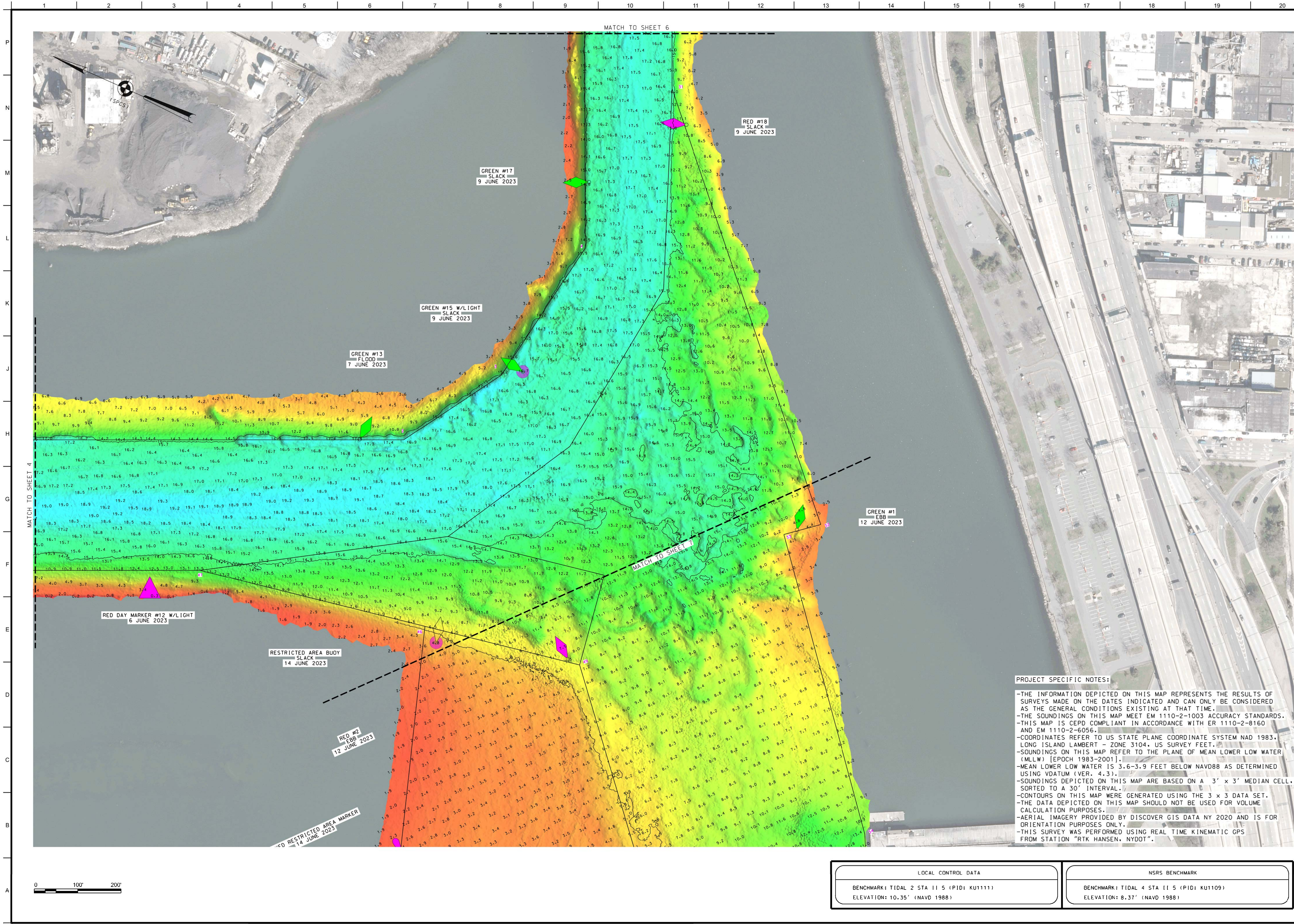
FLUSHING BAY AND CREEK

NEW YORK

CONDITION SURVEY

VH-104

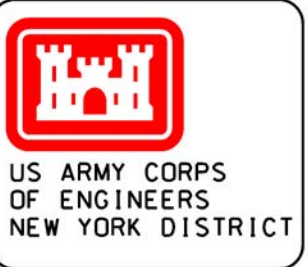
4 OF 7



PROJECT SPECIFIC NOTES:

- THE INFORMATION DEPICTED ON THIS MAP REPRESENTS THE RESULTS OF SURVEYS MADE ON THE DATES INDICATED AND CAN ONLY BE CONSIDERED AS THE GENERAL CONDITIONS EXISTING AT THAT TIME.
- THE SOUNDINGS ON THIS MAP MEET EM 1110-2-1003 ACCURACY STANDARDS.
- THIS MAP IS CEPD COMPLIANT IN ACCORDANCE WITH ER 1110-2-8160 AND EM 1110-2-6056.
- COORDINATES REFER TO US STATE PLANE COORDINATE SYSTEM NAD 1983, LONG ISLAND LAMBERT - ZONE 3104, US SURVEY FEET.
- SOUNDINGS ON THIS MAP REFER TO THE PLANE OF MEAN LOWER LOW WATER (MLLW) [EPOCH 1983-2001].
- MEAN LOWER LOW WATER IS 3.6-3.9 FEET BELOW NAVD88 AS DETERMINED USING VDATUM (VER. 4.3).
- SOUNDINGS DEPICTED ON THIS MAP ARE BASED ON A 3' x 3' MEDIAN CELL, SORTED TO A 30' INTERVAL.
- CONTOURS ON THIS MAP WERE GENERATED USING THE 3 x 3 DATA SET.
- THE DATA DEPICTED ON THIS MAP SHOULD NOT BE USED FOR VOLUME CALCULATION PURPOSES.
- AERIAL IMAGERY PROVIDED BY DISCOVER GIS DATA NY 2020 AND IS FOR ORIENTATION PURPOSES ONLY.
- THIS SURVEY WAS PERFORMED USING REAL TIME KINEMATIC GPS FROM STATION "RTK HANSEN, NYDOT".

LOCAL CONTROL DATA	NSRS BENCHMARK
BENCHMARK: TIDAL 2 STA 11 5 (PID: KU1111) ELEVATION: 10.35' (NAVD 1988)	BENCHMARK: TIDAL 4 STA 11 5 (PID: KU1109) ELEVATION: 8.37' (NAVD 1988)



CM-JHS-EO
PR
MP

DATES OF SURVEY: 6.7.9.12.14 JUNE 2023	SCALE: ONE INCH = 100 FEET
REQ. NO./FILE NO.:5508/N3/N4	FIELD BOOKS: N/A

APPROVED: J. BERTOLOTI FIELD CARTOGRAPHER	APPROVED: M. FORTE ENGINEERING TECHNICIAN
APPROVED: P. BLOQUE CHIEF OF SURVEY SUPPORT SECTION	APPROVED: J. MRAZ DEPUTY CHIEF OF SURVEYS AND MAPPING BRANCH
DATE: 23 JUNE 2023	

DEPARTMENT OF THE ARMY U.S. ARMY CORPS OF ENGINEERS NEW YORK DISTRICT NEW YORK, NEW YORK 10278	OPERATIONS DIVISION SURVEYS AND MAPPING BRANCH CENAN-OP-SS
---	--

FLUSHING BAY AND CREEK
NEW YORK
CONDITION SURVEY

