

PROJECT SPECIFIC NOTES:

- THE INFORMATION DEPICTED ON THIS MAP REPRESENTS THE RESULTS OF SURVEYS MADE ON THE DATES INDICATED AND CAN ONLY BE CONSIDERED AS THE GENERAL CONDITIONS EXISTING AT THAT TIME.
- THE SOUNDINGS ON THIS MAP MEET EM 1110-2-1003 ACCURACY STANDARDS.
- THIS MAP IS CEPD COMPLIANT IN ACCORDANCE WITH ER 1110-2-8160 AND EM 1110-2-6056.
- COORDINATES REFER TO US STATE PLANE COORDINATE SYSTEM NAD 1983, NEW JERSEY MERCATOR - ZONE 2900, US SURVEY FEET.
- SOUNDINGS ON THIS MAP REFER TO THE PLANE OF MEAN LOWER LOW WATER (MLLW) [EPOCH 1983-2001].
- MEAN LOWER LOW WATER IS 1.5-2.7 FEET BELOW NAVD88 AS DETERMINED USING VDATUM (VER. 4.3).
- SOUNDINGS DEPICTED ON THIS MAP ARE BASED ON A 3' x 3' MEDIAN CELL, SORTED TO A 30' INTERVAL.
- CONTOURS ON THIS MAP WERE GENERATED USING THE 3 x 3 DATA SET.
- THE DATA DEPICTED ON THIS MAP SHOULD NOT BE USED FOR VOLUME CALCULATION PURPOSES.
- AERIAL IMAGERY PROVIDED BY NJGIS 2020 AND IS FOR ORIENTATION PURPOSES ONLY.
- THIS SURVEY WAS PERFORMED USING REAL TIME KINEMATIC GPS FROM STATION "13 E 14, NYDOT".

NSRS BENCHMARK	LOCAL CONTROL DATA
BENCHMARK: 6270 (PID: DG9898)	BENCHMARK: 13 F 16 (PID: DR5371)
ELEVATION: 7.20' (NAVD 1988)	ELEVATION: 7.53' (NAVD 1988)

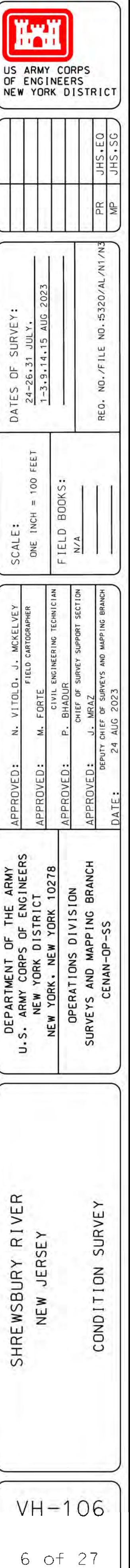
US ARMY CORPS OF ENGINEERS  
NEW YORK DISTRICT

DATES OF SURVEY: 24-26-31 JULY, 1-3-9-14-15 AUG 2023		REQ. NO./FILE NO.:9320/AL/N1/M3	
SCALE: ONE INCH = 100 FEET	FIELD BOOKS: N/A		
APPROVED: N. VITOLD FIELD CARTOGRAPHER	APPROVED: M. FORTE CHIEF ENGINEERING TECHNICIAN	APPROVED: P. BLADIER CHIEF OF SURVEY SUPPORT SECTION	APPROVED: J.L. MRAZ DEPUTY CHIEF OF SURVEYS AND MAPPING BRANCH
DEPARTMENT OF THE ARMY U.S. ARMY CORPS OF ENGINEERS NEW YORK DISTRICT NEW YORK, NEW YORK 10278		OPERATIONS DIVISION SURVEYS AND MAPPING BRANCH CCNAN-OP-SS	
SHREWSBURY RIVER NEW JERSEY		CONDITION SURVEY	
VH-104		4 OF 27	













































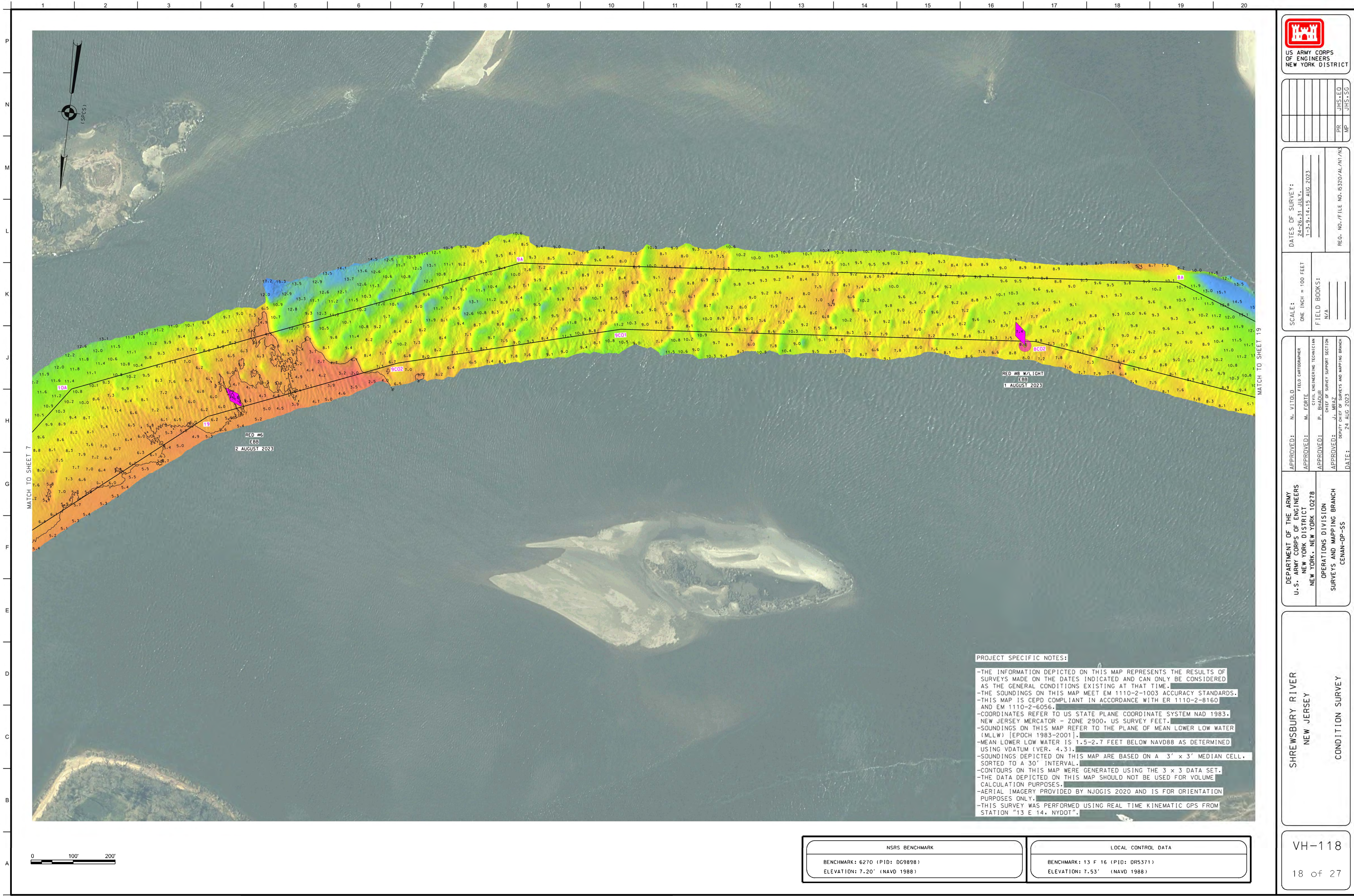




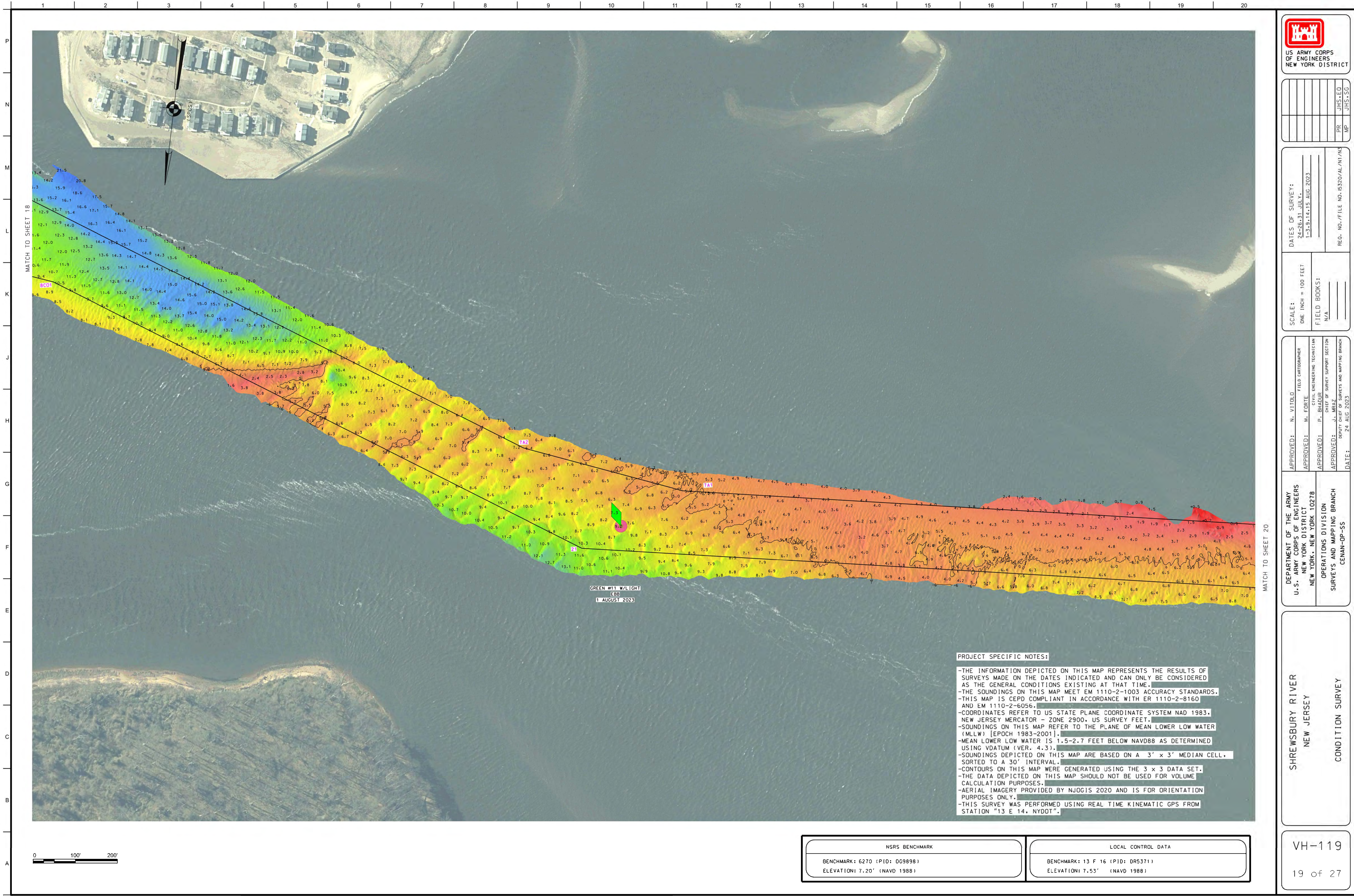








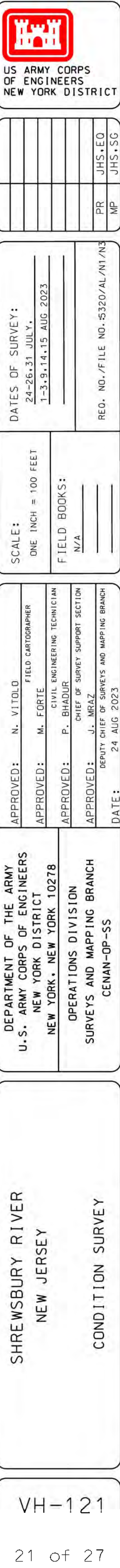




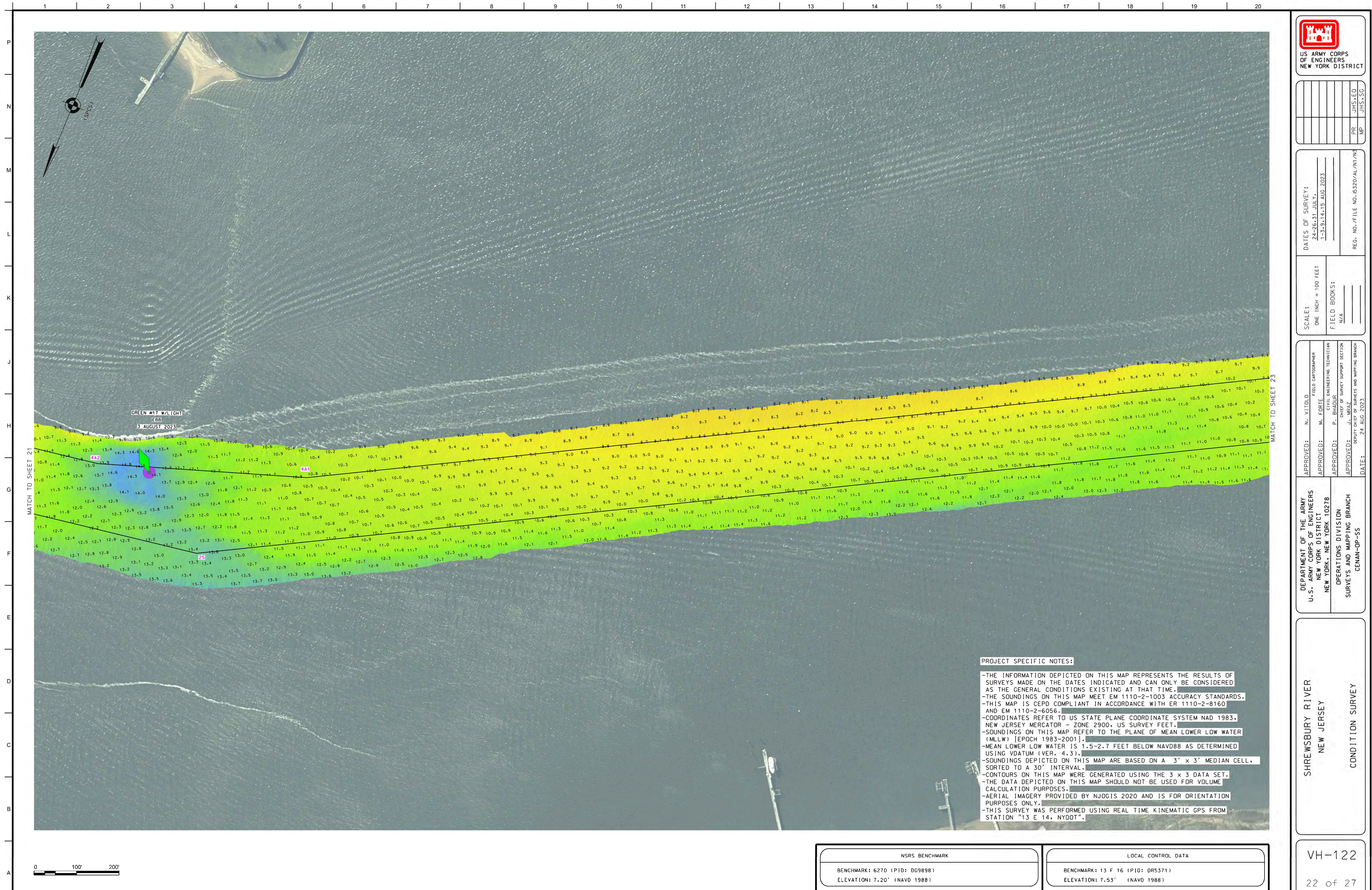




















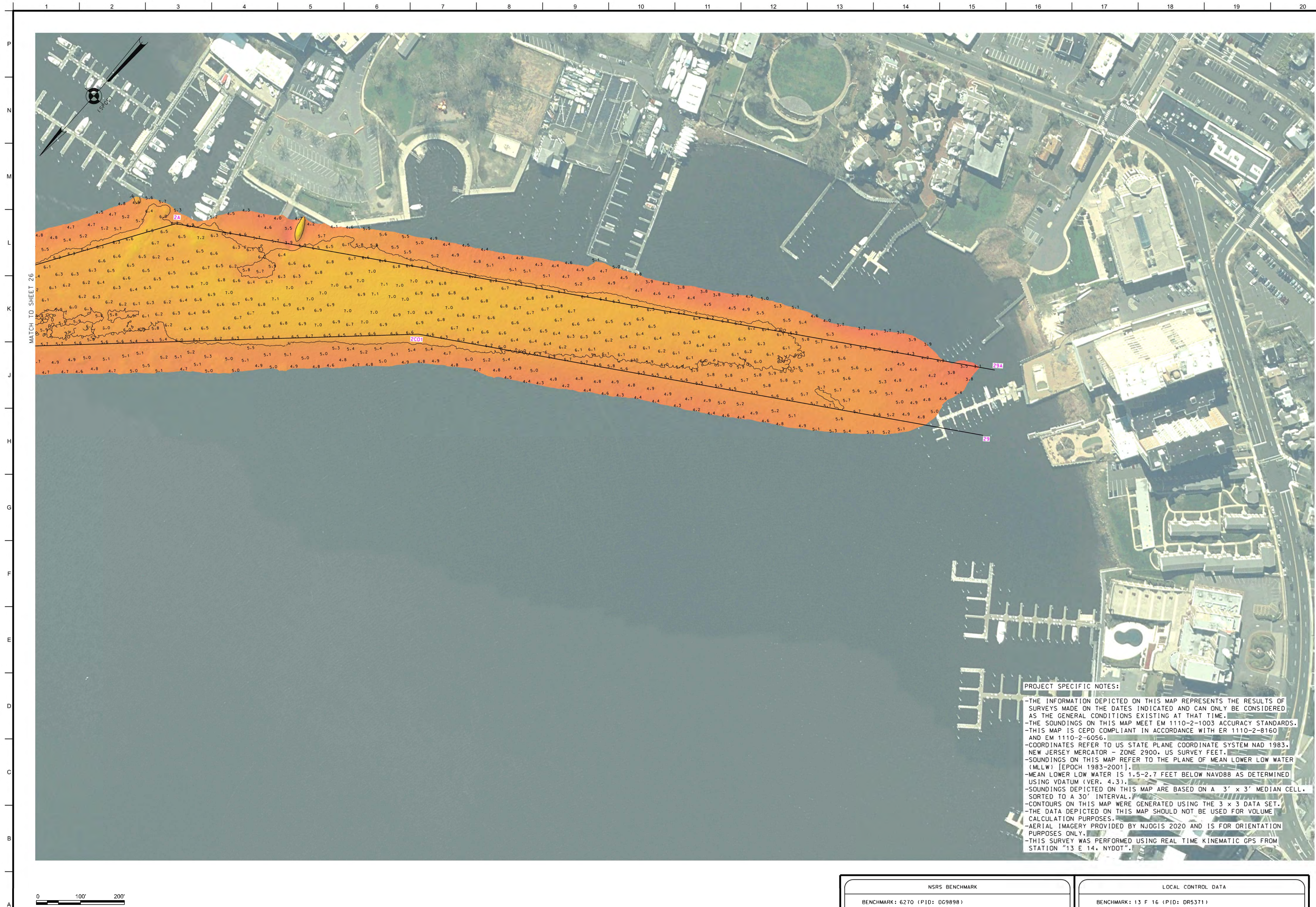












NSRS BENCHMARK

LOCAL CONTROL DATA

