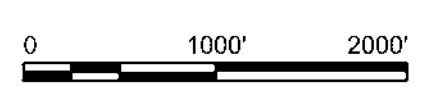


**PROJECT SPECIFIC NOTES:**

- THE INFORMATION DEPICTED ON THIS MAP REPRESENTS THE RESULTS OF SURVEYS MADE ON THE DATES INDICATED AND CAN ONLY BE CONSIDERED AS THE GENERAL CONDITIONS EXISTING AT THAT TIME.
- THE SOUNDINGS ON THIS MAP MEET EM 1110-2-1003 ACCURACY STANDARDS.
- THIS MAP IS CEPD COMPLIANT IN ACCORDANCE WITH ER 1110-2-8160 AND EM 1110-2-6056.
- COORDINATES REFER TO US STATE PLANE COORDINATE SYSTEM NAD 1983, NEW JERSEY MERCATOR - ZONE 2900, US SURVEY FEET.
- SOUNDINGS ON THIS MAP REFER TO THE PLANE OF MEAN LOWER LOW WATER (MLLW) [EPOCH 1983-2001].
- MEAN LOWER LOW WATER IS 3.0 FEET BELOW NAVD88 AS DETERMINED USING VDATUM (VER. 4.6.1).
- SOUNDINGS DEPICTED ON THIS MAP ARE BASED ON A 3' x 3' MEDIAN CELL, SORTED TO A 30' INTERVAL.
- CONTOURS ON THIS MAP WERE GENERATED USING THE 3' x 3' DATA SET.
- THE DATA DEPICTED ON THIS MAP SHOULD NOT BE USED FOR VOLUME CALCULATION PURPOSES.
- AERIAL IMAGERY PROVIDED BY DGIS NEW JERSEY IMAGERY WAREHOUSE AND IS FOR ORIENTATION PURPOSES ONLY.
- THIS SURVEY WAS PERFORMED USING REAL TIME KINEMATIC GPS FROM STATION "CAVEN POINT".



LOCAL CONTROL DATA	NSRS BENCHMARK
BENCHMARK: NBAY 2 ELEVATION: 7.41' (NAVD 1988)	BENCHMARK: P 38 (PID:KVO333) ELEVATION: 21.93' (NAVD 1988)



US ARMY CORPS OF ENGINEERS  
NEW YORK DISTRICT

PR	ESD	PDC
MP		

DATES OF SURVEY:  
23-24, 29-31 JAN 2024

SCALE:  
ONE INCH = 1000 FEET

F FIELD BOOKS:  
1057

REQ. NO./FILE NO.: 15403/D/N1

APPROVED: P. KEARNS / J. BERDLOTTI  
FIELD COMMANDER

APPROVED: M. FORTE  
CIVIL ENGINEERING TECHNICIAN

APPROVED: P. BALDUR  
CHIEF OF SURVEY SUPPORT SECTION

APPROVED: J. MRAZ  
DEPUTY CHIEF OF SURVEYS AND MAPPING BRANCH

DATE: 08 FEBRUARY 2024

DEPARTMENT OF THE ARMY  
U.S. ARMY CORPS OF ENGINEERS  
NEW YORK DISTRICT  
NEW YORK, NEW YORK 10278

OPERATIONS DIVISION  
SURVEYS AND MAPPING BRANCH  
CEMAN-OP-SS

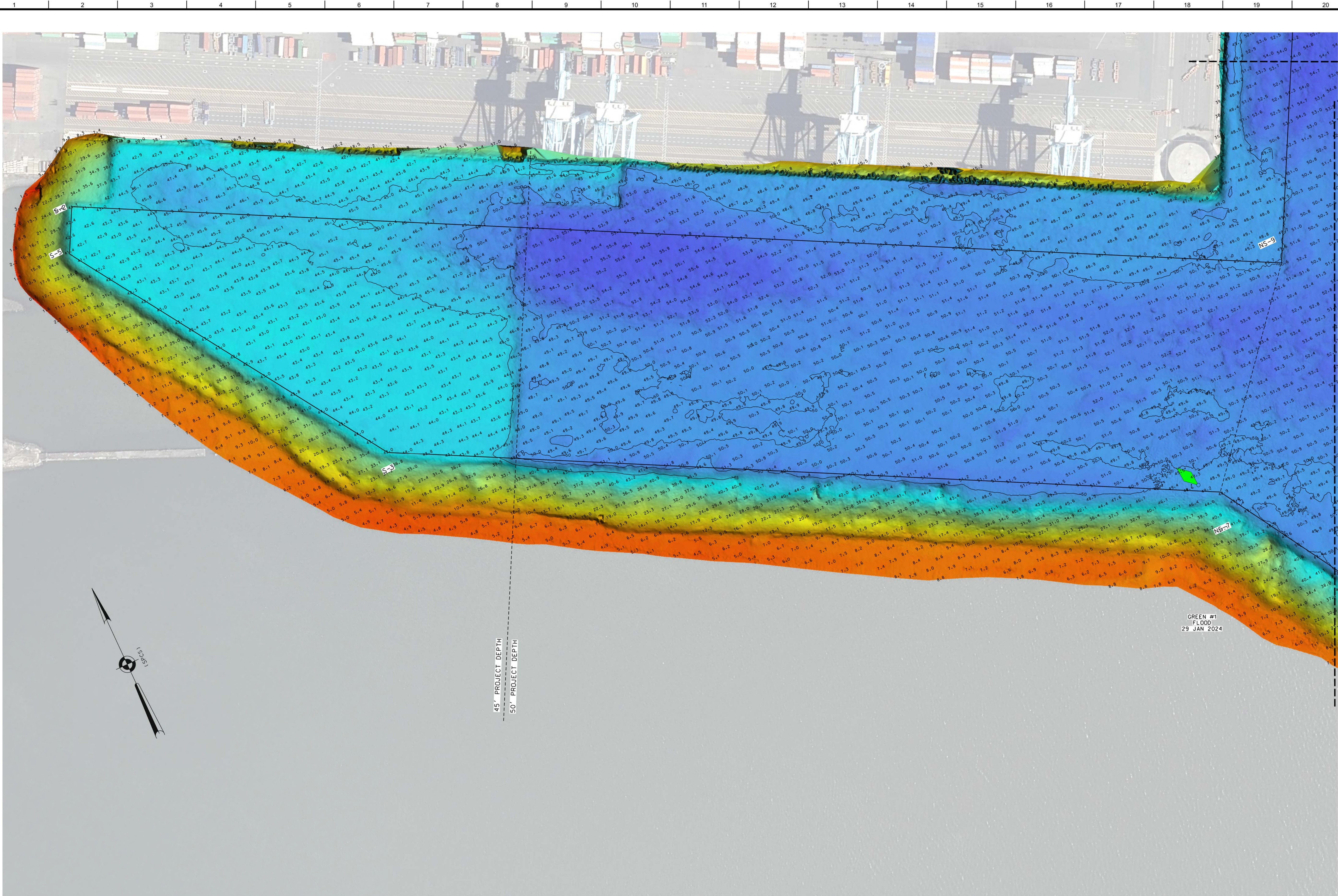
NEWARK BAY, HACKENSACK & PASSAIC RIVERS  
NEWARK BAY  
NEW JERSEY

PLANS & SPECIFICATIONS SURVEY

VH-101

1 OF 14





US ARMY CORPS OF ENGINEERS  
NEW YORK DISTRICT

PR	ESD	PDC
MP		

DATES OF SURVEY:  
23-24, 29-31 JAN 2024

REG. NO./FILE NO.: 15403/D/11

SCALE:  
ONE INCH = 100 FEET

FIELD BOOKS:  
1057

APPROVED: P. KEARNS / J. BERDOLLOTTI  
FIELD ENGINEER

APPROVED: M. FORTE  
CIVIL ENGINEERING TECHNICIAN

APPROVED: P. BLADIER  
CHIEF OF SURVEY SUPPORT SECTION

APPROVED: J. MRAZ  
DEPUTY CHIEF OF SURVEYS AND MAPPING BRANCH

DATE: 08 FEBRUARY 2024

DEPARTMENT OF THE ARMY  
U.S. ARMY CORPS OF ENGINEERS  
NEW YORK DISTRICT  
NEW YORK, NEW YORK 10278

OPERATIONS DIVISION  
SURVEYS AND MAPPING BRANCH  
CENAN-OP-SS

NEWARK BAY, HACKENSACK & PASSAIC RIVERS  
NEWARK BAY  
NEW JERSEY

PLANS & SPECIFICATIONS SURVEY

VH-102  
2 OF 14

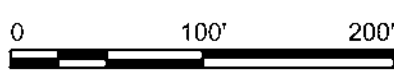
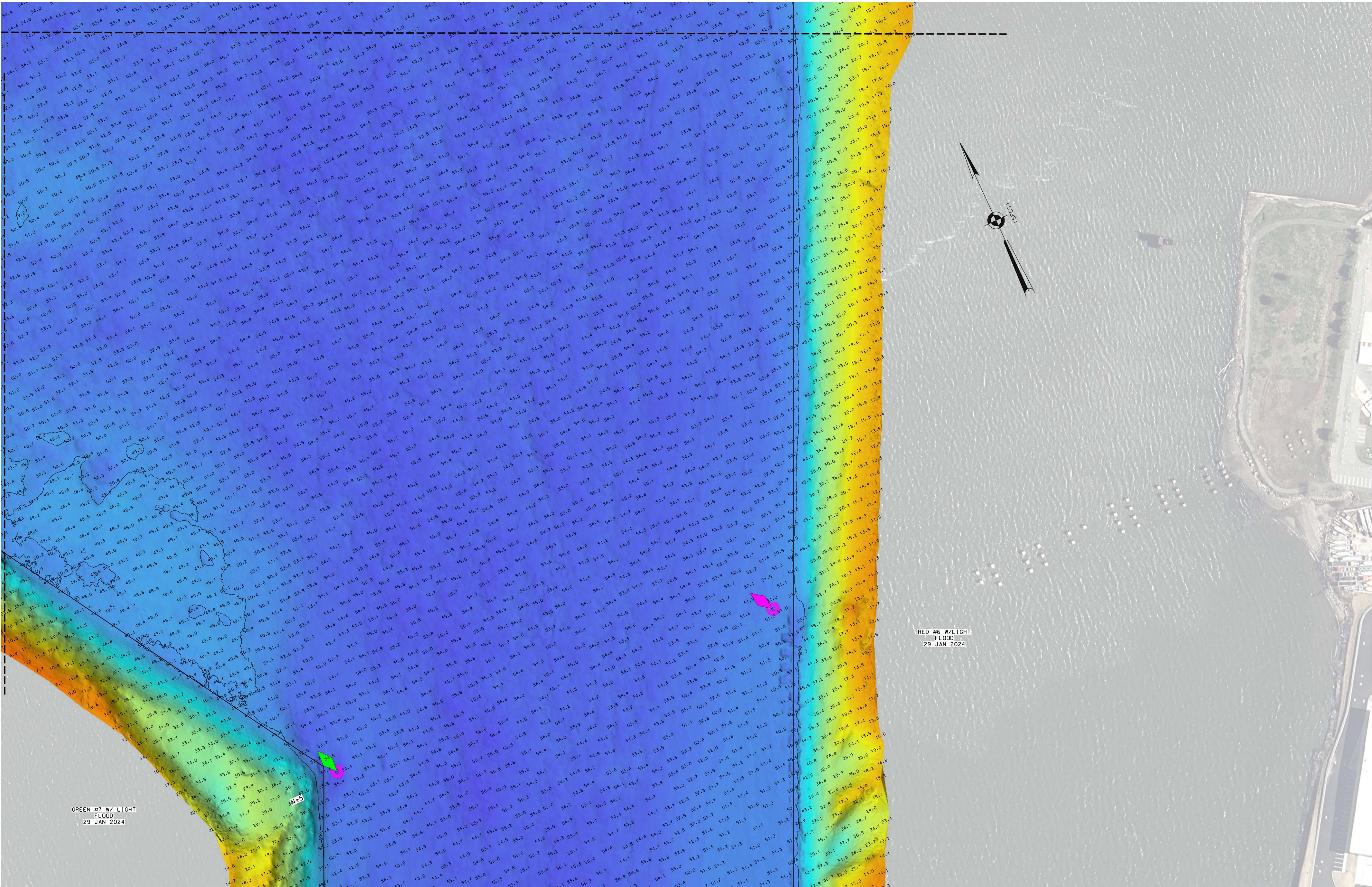
LOCAL CONTROL DATA
BENCHMARK: NBAY 2 ELEVATION: 7.41' (NAVD 1988)

NSRS BENCHMARK
BENCHMARK: P 38 (PID:KVO333) ELEVATION: 21.93' (NAVD 1988)

FOR PROJECT SPECIFIC NOTES, REFER TO SHEET VH-101.



MATCH TO SHEET 4



LOCAL CONTROL DATA		NRSR BENCHMARK	
BENCHMARK: NBAY 2	ELEVATION: 7.41' (NAVD 1988)	BENCHMARK: P 38 (PID:KVO333)	ELEVATION: 21.93' (NAVD 1988)

FOR PROJECT SPECIFIC NOTES. REFER TO SHEET VH-101.



DATE OF SURVEY:	23-24, 29-31 JAN 2024
SCALE:	ONE INCH = 100 FEET
FIELD BOOKS:	1057
REG. NO./FILE NO.:	15403/D/N1

APPROVED:	P. KEARNS / J. BERTELOTTI FIELD ENGINEER
APPROVED:	M. FORTE CIVIL ENGINEERING TECHNICIAN
APPROVED:	P. BALDUP CHIEF OF SURVEY SUPPORT SECTION
APPROVED:	J. MRAZ DEPUTY CHIEF OF SURVEYS AND MAPPING BRANCH
DATE:	08 FEBRUARY 2024

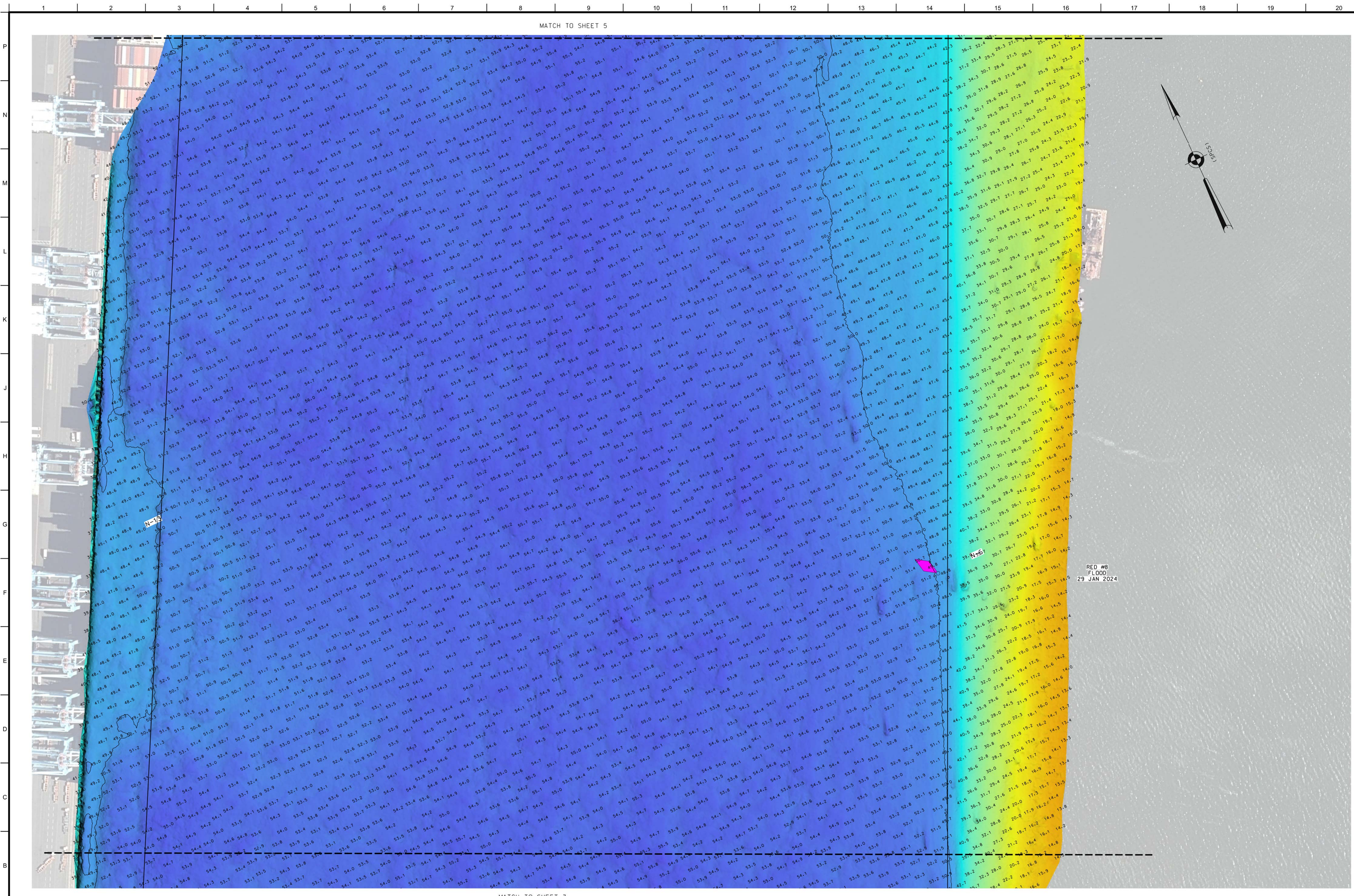
DEPARTMENT OF THE ARMY	U.S. ARMY CORPS OF ENGINEERS
NEW YORK DISTRICT	NEW YORK, NEW YORK 10278
OPERATIONS DIVISION	SURVEYS AND MAPPING BRANCH
CENAN-OP-SS	

**NEWARK BAY, HACKENSACK & PASSAIC RIVERS  
NEWARK BAY  
NEW JERSEY  
PLANS & SPECIFICATIONS SURVEY**

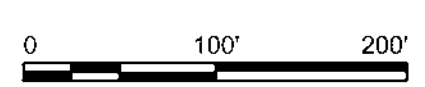
VH-103  
3 OF 14



MATCH TO SHEET 5



MATCH TO SHEET 3



LOCAL CONTROL DATA	
BENCHMARK: NBAY 2	
ELEVATION: 7.41' (NAVD 1988)	

NSRS BENCHMARK	
BENCHMARK: P 38 (PID:KVO333)	
ELEVATION: 21.93' (NAVD 1988)	

FOR PROJECT SPECIFIC NOTES, REFER TO SHEET VH-101.



US ARMY CORPS OF ENGINEERS  
NEW YORK DISTRICT

PR	ESD
MP	PDC

DATES OF SURVEY:  
23-24, 29-31 JAN 2024

REG. NO./FILE NO.: 15403/D/11

SCALE:  
ONE INCH = 100 FEET

FIELD BOOKS:  
1057

APPROVED: P. KEARNS / J. BERTELOTTI  
FIELD ENGINEER

APPROVED: M. FORTE  
CIVIL ENGINEERING TECHNICIAN

APPROVED: P. BLODUP  
CHIEF OF SURVEY SUPPORT SECTION

APPROVED: J. MRAZ  
DEPUTY CHIEF OF SURVEYS AND MAPPING BRANCH

DATE: 08 FEBRUARY 2024

DEPARTMENT OF THE ARMY  
U.S. ARMY CORPS OF ENGINEERS  
NEW YORK DISTRICT  
NEW YORK, NEW YORK 10278

OPERATIONS DIVISION  
SURVEYS AND MAPPING BRANCH  
CENAN-OP-SS

NEWARK BAY, HACKENSACK & PASSAIC RIVERS  
NEWARK BAY  
NEW JERSEY

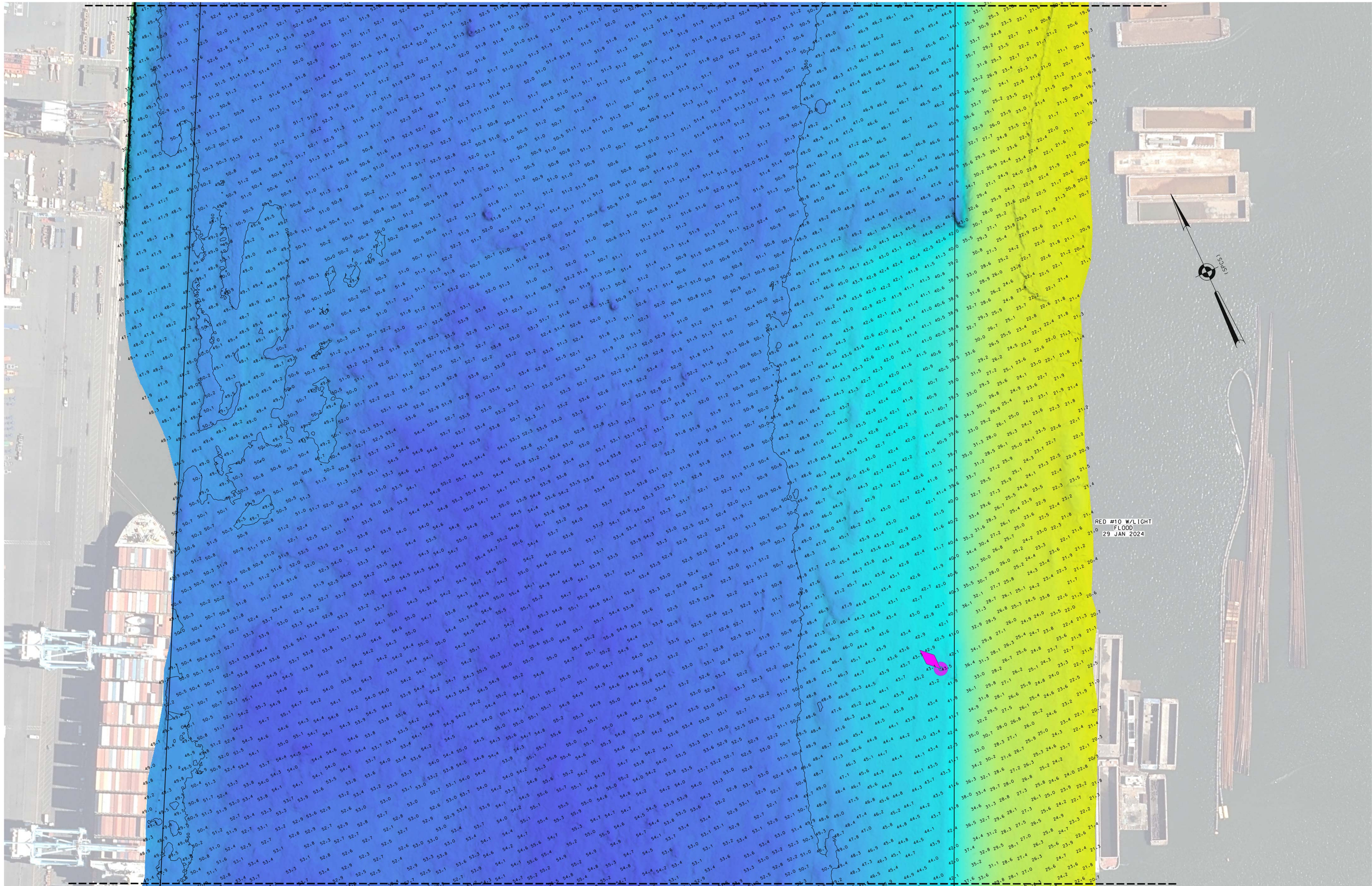
PLANS & SPECIFICATIONS SURVEY

VH-104

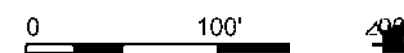
4 OF 14



MATCH TO SHEET 6



MATCH TO SHEET 4



LOCAL CONTROL DATA		NSRS BENCHMARK	
BENCHMARK: NBAY 2	ELEVATION: 7.41' (NAVD 1988)	BENCHMARK: P 38 (PID:KVO333)	ELEVATION: 21.93' (NAVD 1988)

FOR PROJECT SPECIFIC NOTES, REFER TO SHEET VH-101.



US ARMY CORPS OF ENGINEERS  
NEW YORK DISTRICT

PR	ESD	PDC

DATES OF SURVEY:  
23-24, 29-31 JAN 2024

REG. NO./FILE NO.: 15403/D/NI

SCALE:  
ONE INCH = 100 FEET

FIELD BOOKS:  
1057

APPROVED: P. KEARNS / J. BERTELOTTI  
FIELD ENGINEER

APPROVED: M. FORTE  
CIVIL ENGINEERING TECHNICIAN

APPROVED: P. BLAGOJEVIC  
CHIEF OF SURVEY SUPPORT SECTION

APPROVED: J. MRAZ  
DEPUTY CHIEF OF SURVEYS AND MAPPING BRANCH

DATE: 08 FEBRUARY 2024

DEPARTMENT OF THE ARMY  
U.S. ARMY CORPS OF ENGINEERS  
NEW YORK DISTRICT  
NEW YORK, NEW YORK 10278

OPERATIONS DIVISION  
SURVEYS AND MAPPING BRANCH  
CENAN-OP-SS

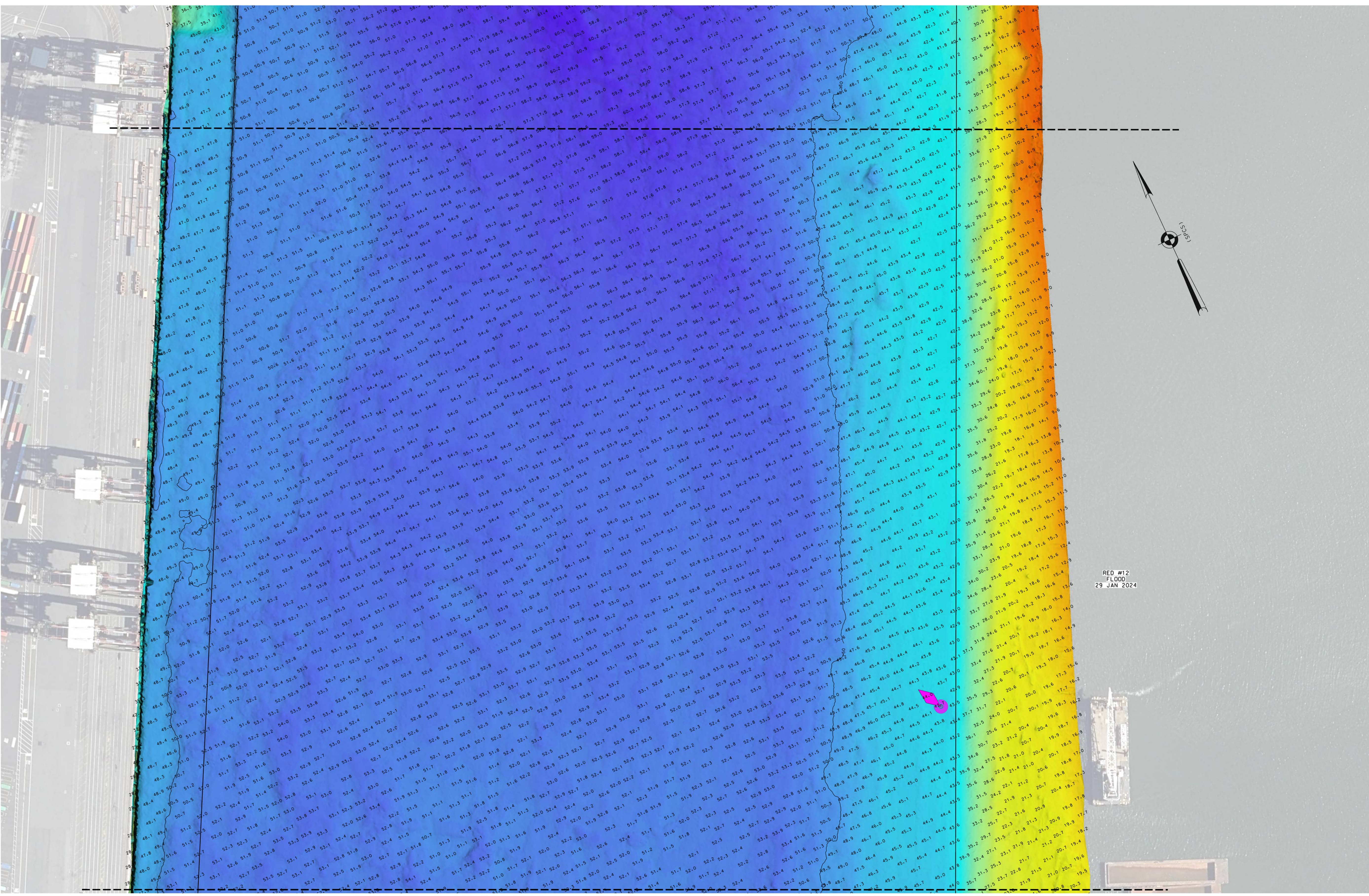
NEWARK BAY, HACKENSACK & PASSAIC RIVERS  
NEWARK BAY  
NEW JERSEY

PLANS & SPECIFICATIONS SURVEY

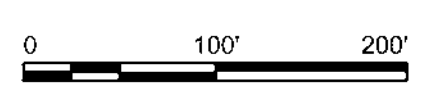
VH-105



MATCH TO SHEET 7



MATCH TO SHEET 5



LOCAL CONTROL DATA		NSRS BENCHMARK	
BENCHMARK: NBAY 2	ELEVATION: 7.41' (NAVD 1988)	BENCHMARK: P 38 (PID:KVO333)	ELEVATION: 21.93' (NAVD 1988)

FOR PROJECT SPECIFIC NOTES, REFER TO SHEET VH-101.



US ARMY CORPS OF ENGINEERS  
NEW YORK DISTRICT

PR	ESD	PDC
MP		

DATES OF SURVEY: 23-24, 29-31 JAN 2024	SCALE: ONE INCH = 100 FEET	FIELD BOOKS: 1057	REG. NO./FILE NO.: 15403/D/NI
---	-------------------------------	----------------------	-------------------------------

APPROVED:	P. KEARNS / J. BERTELOTTI FIELD ENGINEER
APPROVED:	M. FORTE CIVIL ENGINEERING TECHNICIAN
APPROVED:	P. BILADUR CHIEF OF SURVEY SUPPORT SECTION
APPROVED:	J. MRAZ DEPUTY CHIEF OF SURVEYS AND MAPPING BRANCH
DATE:	08 FEBRUARY 2024

DEPARTMENT OF THE ARMY  
U.S. ARMY CORPS OF ENGINEERS  
NEW YORK DISTRICT  
NEW YORK, NEW YORK 10278  
OPERATIONS DIVISION  
SURVEYS AND MAPPING BRANCH  
CENAN-OP-SS

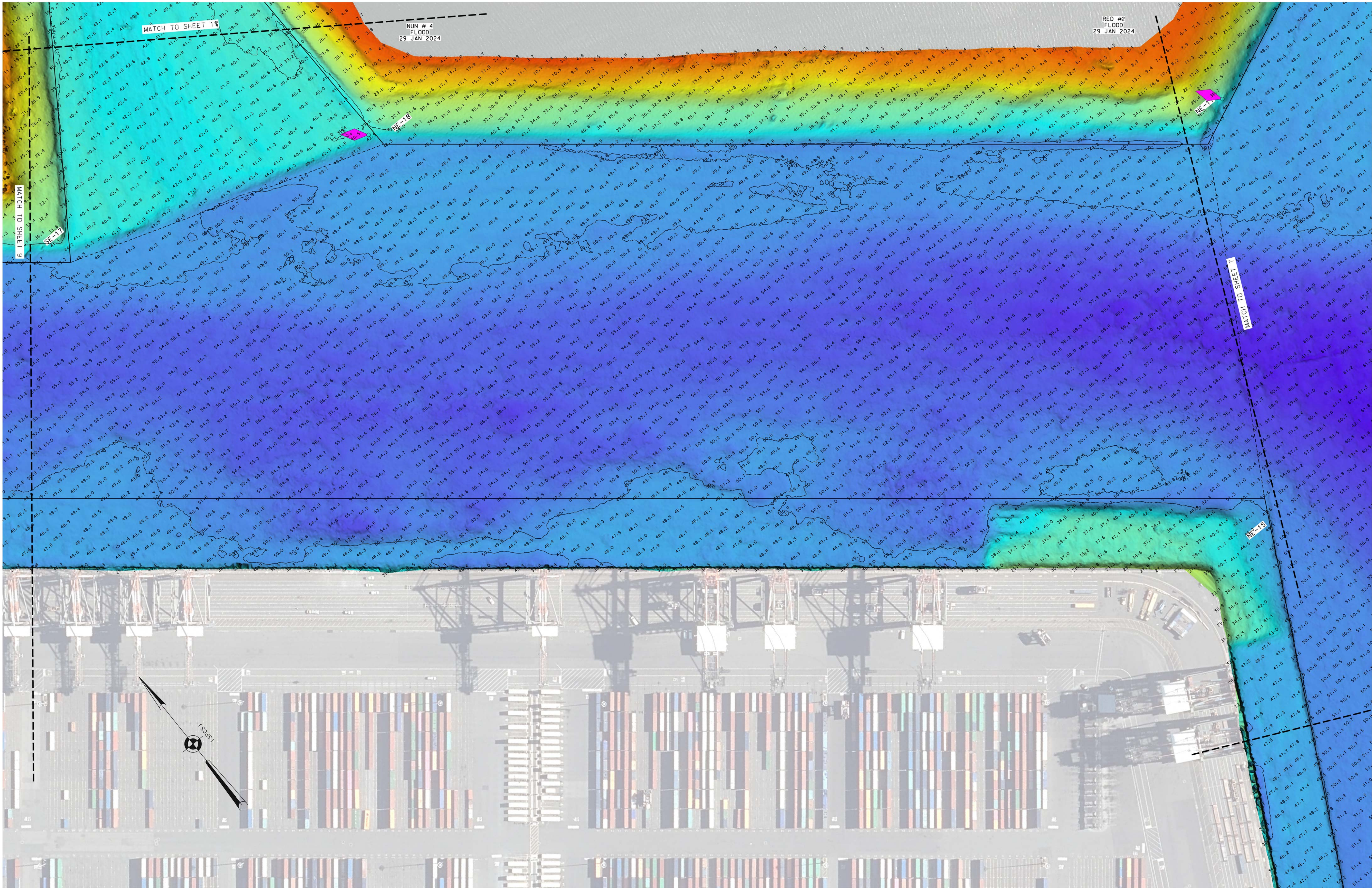
NEWARK BAY, HACKENSACK & PASSAIC RIVERS  
NEWARK BAY  
NEW JERSEY  
PLANS & SPECIFICATIONS SURVEY

VH-106









US ARMY CORPS OF ENGINEERS  
NEW YORK DISTRICT

PR	ESD
MP	PDC

DATE OF SURVEY:  
23-24, 29-31 JAN 2024

REG. NO./FILE NO.: 15403/D/NI

SCALE:  
ONE INCH = 100 FEET

FIELD BOOKS:  
1057

APPROVED: P. KEARNS / J. BERDOLLOTTI  
FIELD ENGINEER

APPROVED: M. FORTE  
CIVIL ENGINEERING TECHNICIAN

APPROVED: P. BALDUR  
CHIEF OF SURVEY SUPPORT SECTION

APPROVED: J. GRAZ  
DEPUTY CHIEF OF SURVEYS AND MAPPING BRANCH

DATE: 08 FEBRUARY 2024

DEPARTMENT OF THE ARMY  
U.S. ARMY CORPS OF ENGINEERS  
NEW YORK DISTRICT  
NEW YORK, NEW YORK 10278

OPERATIONS DIVISION  
SURVEYS AND MAPPING BRANCH  
CENAN-OP-SS

NEWARK BAY, HACKENSACK & PASSAIC RIVERS  
NEWARK BAY  
NEW JERSEY

PLANS & SPECIFICATIONS SURVEY

VH-108  
8 OF 14

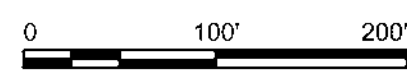
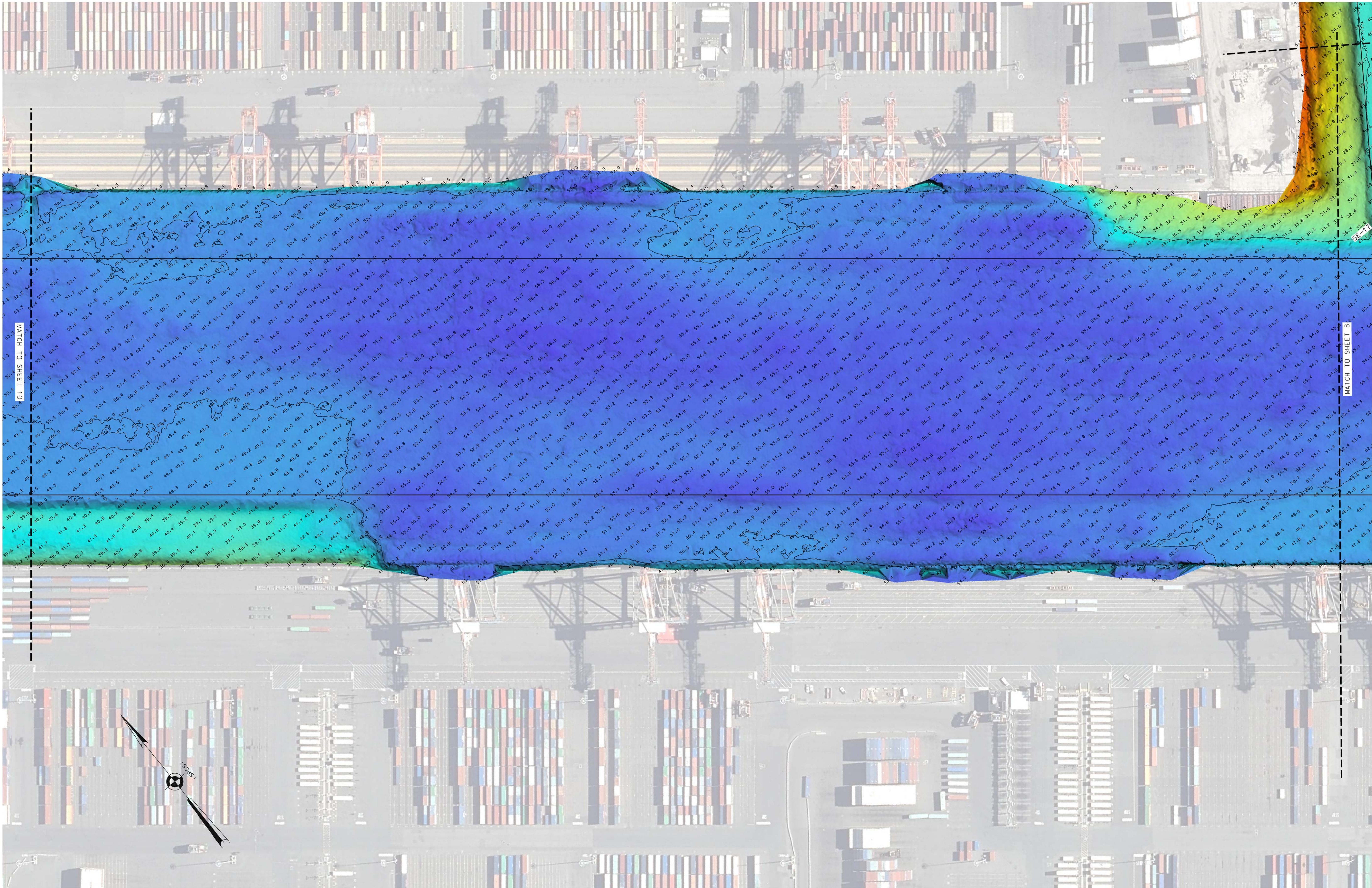
LOCAL CONTROL DATA
BENCHMARK: NBAY 2
ELEVATION: 7.41' (NAVD 1988)

NSRS BENCHMARK
BENCHMARK: P 38 (PID:KVO333)
ELEVATION: 21.93' (NAVD 1988)

FOR PROJECT SPECIFIC NOTES, REFER TO SHEET VH-101.



P  
N  
M  
L  
K  
J  
H  
G  
F  
E  
D  
C  
B  
A



LOCAL CONTROL DATA		NRSR BENCHMARK	
BENCHMARK: NBAY 2	ELEVATION: 7.41' (NAVD 1988)	BENCHMARK: P 38 (PID:KVO333)	ELEVATION: 21.93' (NAVD 1988)

FOR PROJECT SPECIFIC NOTES. REFER TO SHEET VH-101.



US ARMY CORPS OF ENGINEERS  
NEW YORK DISTRICT

PR	ESD
MP	PDC

DATES OF SURVEY:  
23-24, 29-31 JAN 2024

REG. NO./FILE NO.: 15403/D/N1

SCALE:  
ONE INCH = 100 FEET

FIELD BOOKS:  
1057

APPROVED: P. KEARNS / J. BERTELOTTI  
FIELD ENGINEER

APPROVED: M. FORTE  
CIVIL ENGINEERING TECHNICIAN

APPROVED: P. BALDUP  
CHIEF OF SURVEY SUPPORT SECTION

APPROVED: J. MRZ  
DEPUTY CHIEF OF SURVEYS AND MAPPING BRANCH

DATE: 08 FEBRUARY 2024

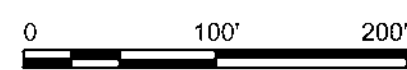
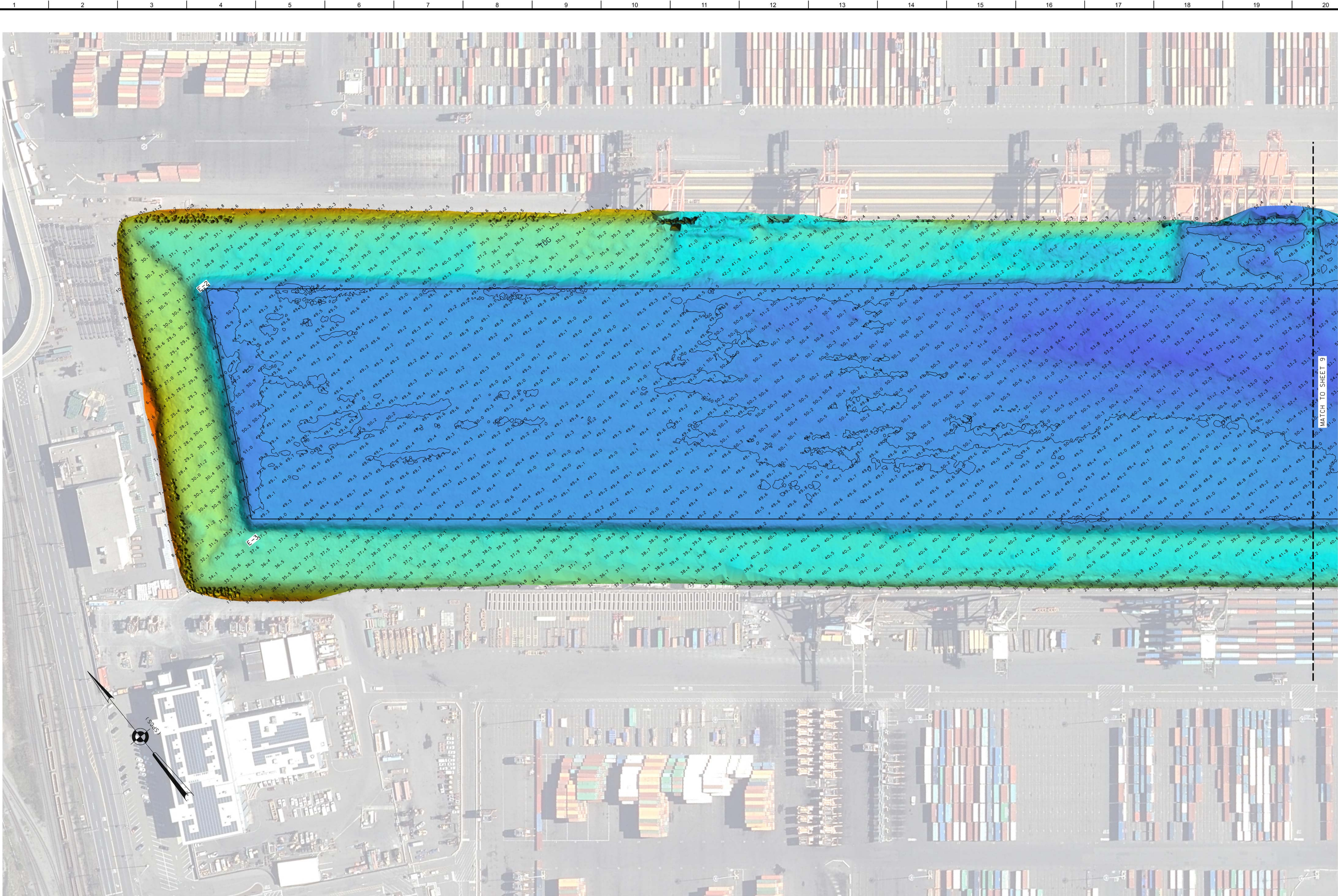
DEPARTMENT OF THE ARMY  
U.S. ARMY CORPS OF ENGINEERS  
NEW YORK DISTRICT  
NEW YORK, NEW YORK 10278

OPERATIONS DIVISION  
SURVEYS AND MAPPING BRANCH  
CENAN-OP-SS

NEWARK BAY, HACKENSACK & PASSAIC RIVERS  
NEWARK BAY  
NEW JERSEY

PLANS & SPECIFICATIONS SURVEY





LOCAL CONTROL DATA
BENCHMARK: NBAY 2
ELEVATION: 7.41' (NAVD 1988)

NSRS BENCHMARK
BENCHMARK: P 38 (PID:KVO333)
ELEVATION: 21.93' (NAVD 1988)

FOR PROJECT SPECIFIC NOTES. REFER TO SHEET VH-101.



US ARMY CORPS OF ENGINEERS  
NEW YORK DISTRICT

PR	ESD
MP	PDC

DATES OF SURVEY: 23-24, 29-31 JAN 2024	SCALE: ONE INCH = 100 FEET	FIELD BOOKS: 1057	REG. NO./FILE NO.: 15403/D/11
---	-------------------------------	----------------------	-------------------------------

APPROVED:	P. KEARNS / J. BERDLOTTI FIELD ENGINEER
APPROVED:	M. FORTE CIVIL ENGINEERING TECHNICIAN
APPROVED:	P. BALDUR CHIEF OF SURVEY SUPPORT SECTION
APPROVED:	J. MRAZ DEPUTY CHIEF OF SURVEYS AND MAPPING BRANCH
DATE:	08 FEBRUARY 2024

DEPARTMENT OF THE ARMY  
U.S. ARMY CORPS OF ENGINEERS  
NEW YORK DISTRICT  
NEW YORK, NEW YORK 10278  
OPERATIONS DIVISION  
SURVEYS AND MAPPING BRANCH  
CENAN-OP-SS

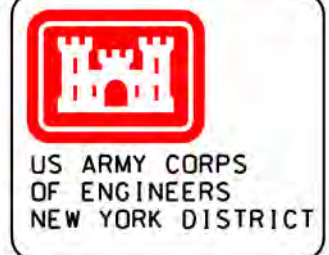
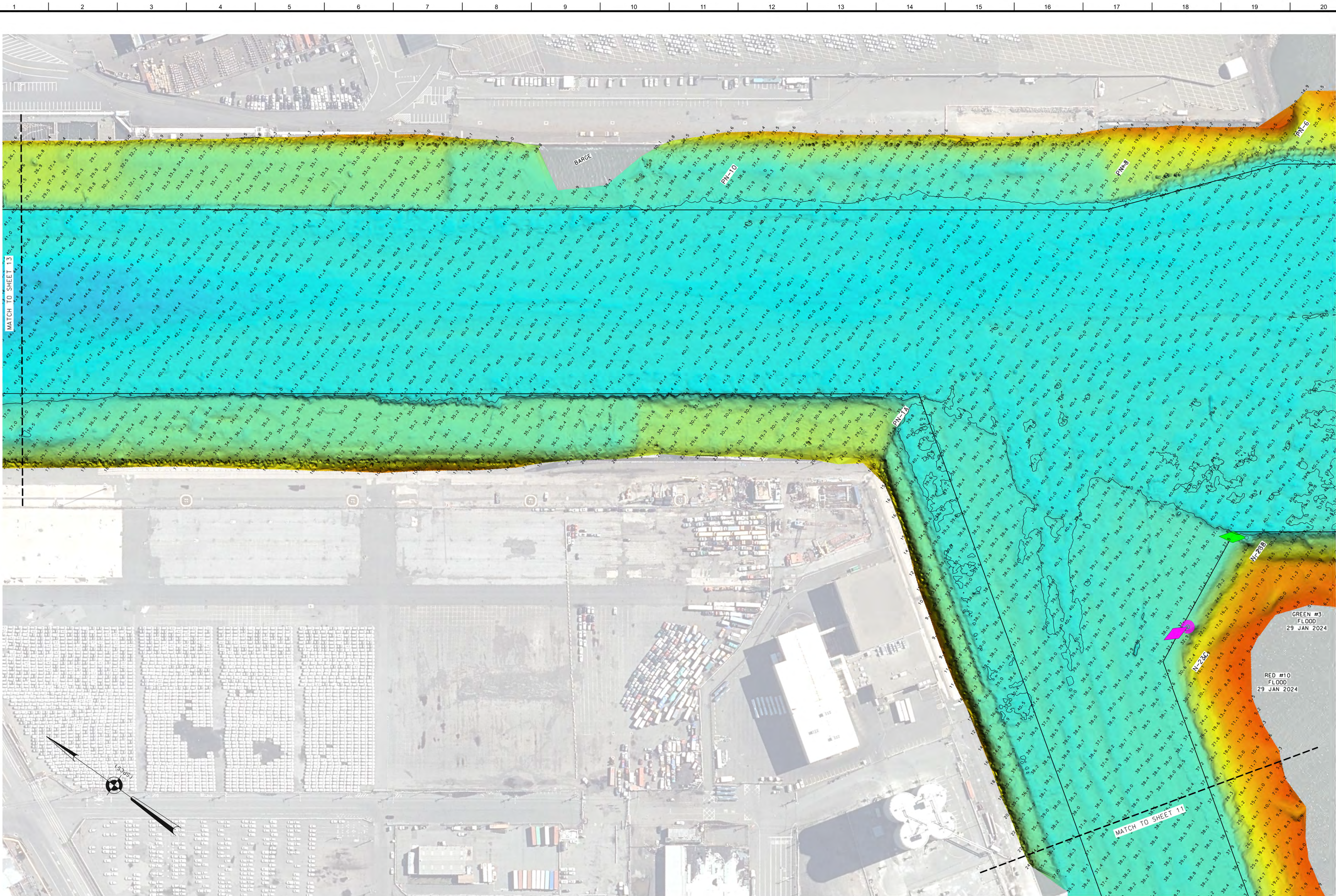
NEWARK BAY, HACKENSACK & PASSAIC RIVERS  
NEWARK BAY  
NEW JERSEY  
PLANS & SPECIFICATIONS SURVEY

VH-110  
10 OF 14









PR	ESD
MP	PDC

DATES OF SURVEY: 23-24, 29-31 JAN 2024	SCALE: ONE INCH = 100 FEET
REG. NO./FILE NO.: 15403/D/11	FIELD BOOKS: 1057

APPROVED: P. KEARNS / J. BERDLOTTI FIELD ENGINEER
APPROVED: M. FORTE CIVIL ENGINEERING TECHNICIAN
APPROVED: P. BALDUS CHIEF OF SURVEY SUPPORT SECTION
APPROVED: J. MRAZ DEPUTY CHIEF OF SURVEYS AND MAPPING BRANCH
DATE: 08 FEBRUARY 2024

DEPARTMENT OF THE ARMY U.S. ARMY CORPS OF ENGINEERS NEW YORK DISTRICT NEW YORK, NEW YORK 10278
OPERATIONS DIVISION SURVEYS AND MAPPING BRANCH CENAN-OP-SS

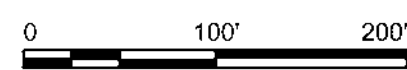
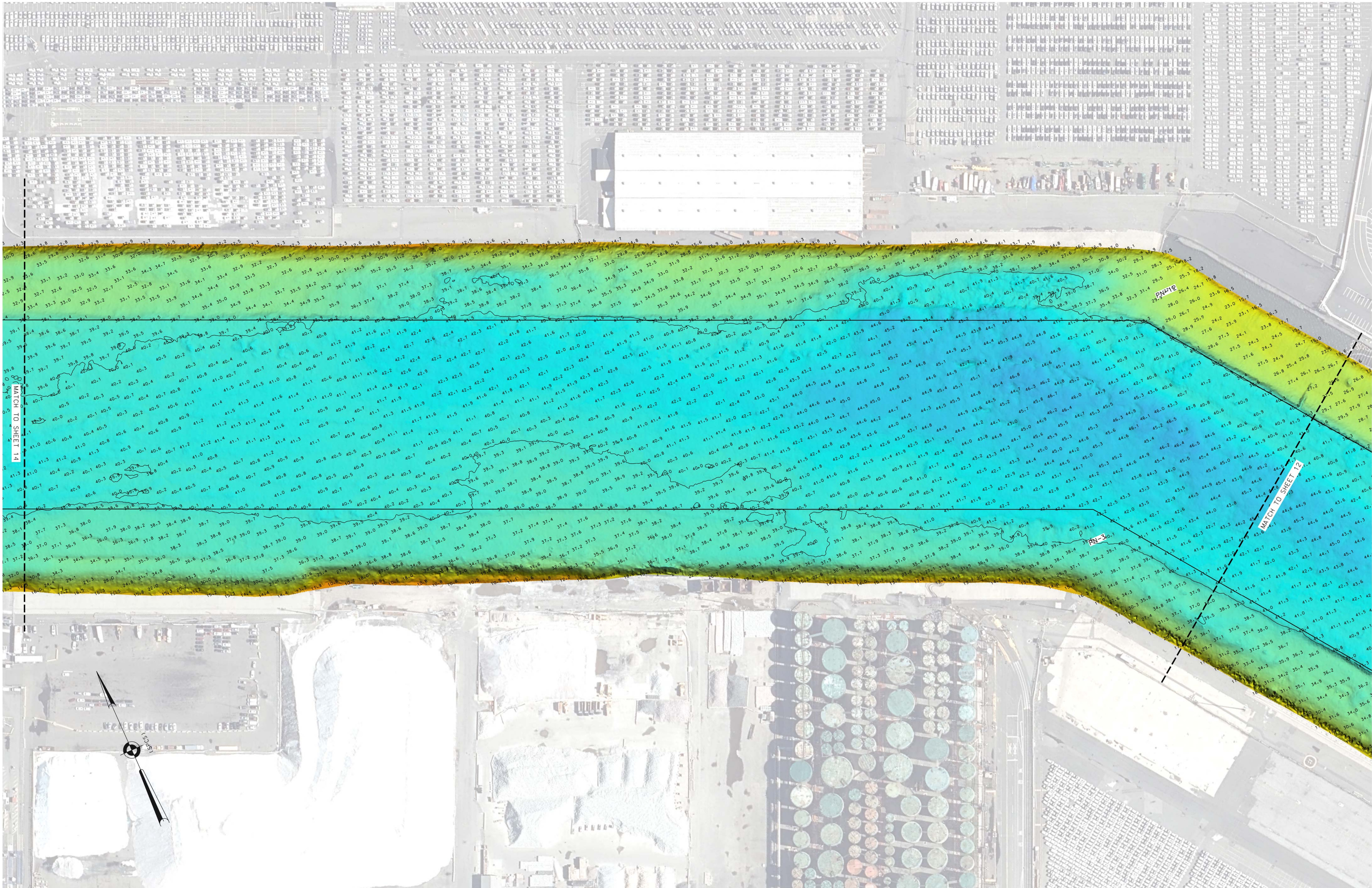
NEWARK BAY, HACKENSACK & PASSAIC RIVERS NEWARK BAY NEW JERSEY
PLANS & SPECIFICATIONS SURVEY

LOCAL CONTROL DATA BENCHMARK: NBAY 2 ELEVATION: 7.41' (NAVD 1988)
---

NSRS BENCHMARK BENCHMARK: P 38 (PID:KVO333) ELEVATION: 21.93' (NAVD 1988)
---

FOR PROJECT SPECIFIC NOTES, REFER TO SHEET VH-101.





LOCAL CONTROL DATA	
BENCHMARK: NBAY 2	ELEVATION: 7.41' (NAVD 1988)

NRSR BENCHMARK	
BENCHMARK: P 38 (PID:KVO333)	ELEVATION: 21.93' (NAVD 1988)

FOR PROJECT SPECIFIC NOTES, REFER TO SHEET VH-101.



US ARMY CORPS OF ENGINEERS  
NEW YORK DISTRICT

PR	ESO
MP	PDC

DATES OF SURVEY: 23-24, 29-31 JAN 2024	REG. NO./FILE NO.: 15403/D/N1
---	-------------------------------

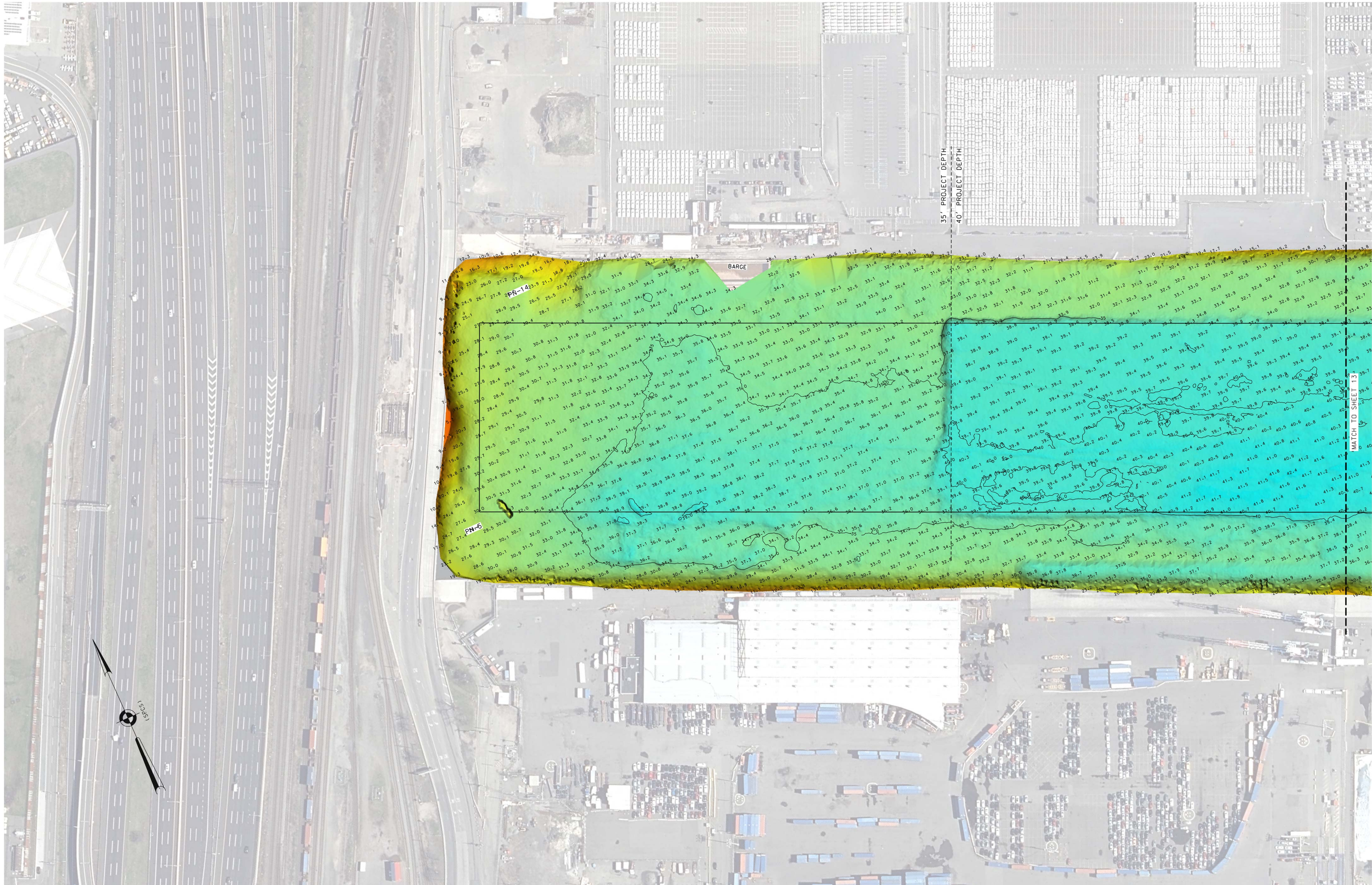
SCALE: ONE INCH = 100 FEET	FIELD BOOKS: 1057
-------------------------------	----------------------

APPROVED: P. KEARNS / J. BERDOLLOTTI FIELD ENGINEER	APPROVED: M. FORTE CIVIL ENGINEERING TECHNICIAN
APPROVED: P. BLAGOJEVIC CHIEF OF SURVEY SUPPORT SECTION	APPROVED: J. MRZ DEPUTY CHIEF OF SURVEYS AND MAPPING BRANCH
DATE: 08 FEBRUARY 2024	

DEPARTMENT OF THE ARMY  
U.S. ARMY CORPS OF ENGINEERS  
NEW YORK DISTRICT  
NEW YORK, NEW YORK 10278  
OPERATIONS DIVISION  
SURVEYS AND MAPPING BRANCH  
CENAN-OP-SS

NEWARK BAY, HACKENSACK & PASSAIC RIVERS  
NEWARK BAY  
NEW JERSEY  
PLANS & SPECIFICATIONS SURVEY





US ARMY CORPS OF ENGINEERS  
NEW YORK DISTRICT

PR	ESD
MP	PDC

DATES OF SURVEY:  
23-24, 29-31 JAN 2024

REQ. NO./FILE NO.: 15403/D/N1

SCALE:  
ONE INCH = 100 FEET

FIELD BOOKS:  
1057

APPROVED: P. KEARNS / J. BERDLOTTI  
FIELD ENGINEER

APPROVED: M. FORTE  
CIVIL ENGINEERING TECHNICIAN

APPROVED: P. BLAGOJEVIC  
CHIEF OF SURVEY SUPPORT SECTION

APPROVED: J. MRAZ  
DEPUTY CHIEF OF SURVEYS AND MAPPING BRANCH

DATE: 08 FEBRUARY 2024

DEPARTMENT OF THE ARMY  
U.S. ARMY CORPS OF ENGINEERS  
NEW YORK DISTRICT  
NEW YORK, NEW YORK 10278

OPERATIONS DIVISION  
SURVEYS AND MAPPING BRANCH  
CENAN-OP-SS

NEWARK BAY, HACKENSACK & PASSAIC RIVERS  
NEWARK BAY  
NEW JERSEY

PLANS & SPECIFICATIONS SURVEY

VH-114  
14 OF 14

LOCAL CONTROL DATA
BENCHMARK: NBAY 2
ELEVATION: 7.41' (NAVD 1988)

NSRS BENCHMARK
BENCHMARK: P 38 (PID:KVO333)
ELEVATION: 21.93' (NAVD 1988)

FOR PROJECT SPECIFIC NOTES, REFER TO SHEET VH-101.