

US ARMY CORPS OF ENGINEERS
NEW YORK DISTRICT

PR	ESD	SG
MP		

DATE OF SURVEY:
28 FEB 2024
4.6.19.25 MAR 2024

REG. NO./FILE NO.: 15414/D/N3

SCALE:
ONE INCH = 1000 FEET

FIELD BOOKS:
N/A

APPROVED: P. HEARNS FIELD CARTOGRAPHER
APPROVED: M. FORTE CIVIL ENGINEERING TECHNICIAN
APPROVED: P. BRADUR CHIEF OF SURVEY SUPPORT SECTION
APPROVED: J. MRAZ DEPUTY CHIEF OF SURVEYS AND MAPPING BRANCH

DATE: 28 MARCH 2024

DEPARTMENT OF THE ARMY
U.S. ARMY CORPS OF ENGINEERS
NEW YORK DISTRICT
NEW YORK, NEW YORK 10278

OPERATIONS DIVISION
SURVEYS AND MAPPING BRANCH
CENAN-OP-SS

NEW YORK HARBOR
BAY RIDGE/RED HOOK CHANNELS
CONDITION SURVEY

VH-101
1 OF 6

PROJECT SPECIFIC NOTES:

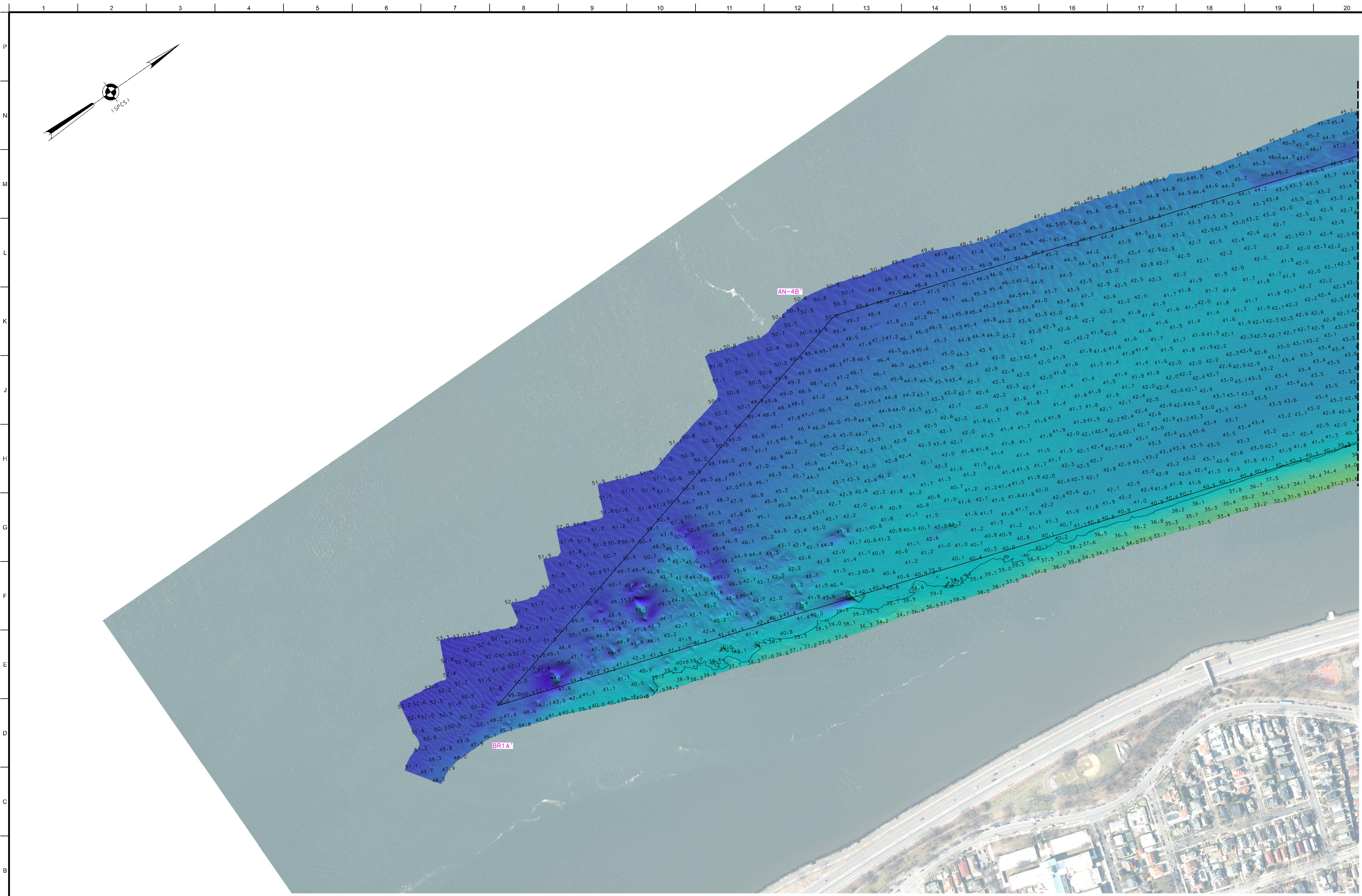
- THE INFORMATION DEPICTED ON THIS MAP REPRESENTS THE RESULTS OF SURVEYS MADE ON THE DATES INDICATED AND CAN ONLY BE CONSIDERED AS THE GENERAL CONDITIONS EXISTING AT THAT TIME.
- THE SOUNDINGS ON THIS MAP MEET EM 1110-2-1003 ACCURACY STANDARDS.
- THIS MAP IS CEPD COMPLIANT IN ACCORDANCE WITH ER 1110-2-8160 AND EM 1110-2-6056.
- COORDINATES REFER TO US STATE PLANE COORDINATE SYSTEM NAD 1983, LONG ISLAND LAMBERT - ZONE 3104, US SURVEY FEET.
- SOUNDINGS ON THIS MAP REFER TO THE PLANE OF MEAN LOWER LOW WATER (MLLW) [EPOCH 1983-2001].
- MEAN LOWER LOW WATER IS 2.8-2.9 FEET BELOW NAVD88 AS DETERMINED USING VDATUM (VER. 4.6.1).
- SOUNDINGS DEPICTED ON THIS MAP ARE BASED ON A 3' x 3' MEDIAN CELL, SORTED TO A 60' INTERVAL.
- CONTOURS ON THIS MAP WERE GENERATED USING THE 3 x 3 DATA SET.
- THE DATA DEPICTED ON THIS MAP SHOULD NOT BE USED FOR VOLUME CALCULATION PURPOSES.
- AERIAL IMAGERY PROVIDED BY DIGITAL COAST: NOAA IMAGERY DATABASE AND IS FOR ORIENTATION PURPOSES ONLY.
- THIS SURVEY WAS PERFORMED USING REAL TIME KINEMATIC GPS FROM STATION "CAVEN POINT".


LOCAL CONTROL DATA

BENCHMARK: P 342 (PID:KV0561)
ELEVATION: 38.36' (NAVD 1988)

NSRS BENCHMARK

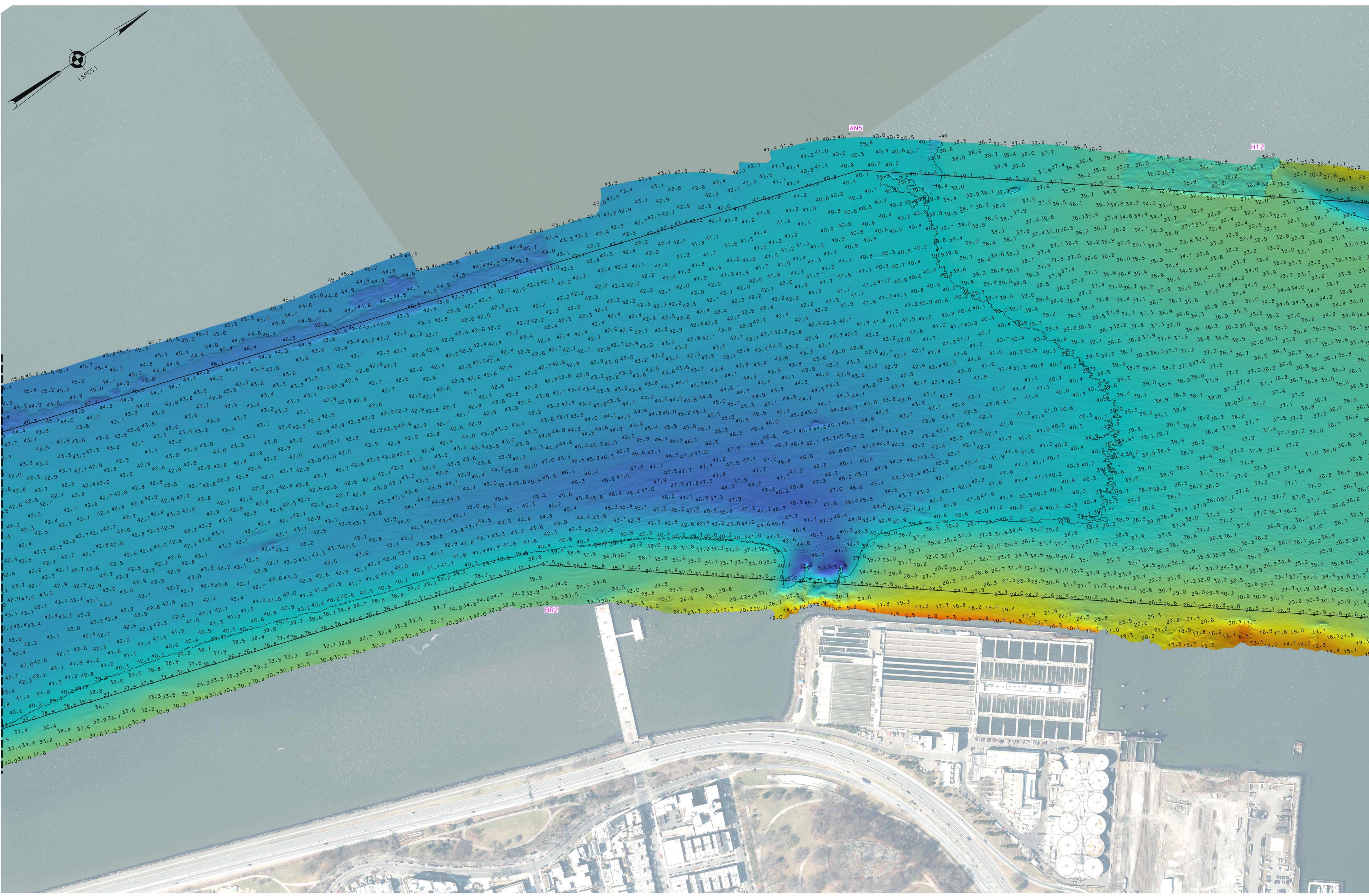
BENCHMARK: N 342 (PID:KV0553)
ELEVATION: 11.69' (NAVD 1988)



 US ARMY CORPS OF ENGINEERS NEW YORK DISTRICT	
	PR ES MP SC
DATES OF SURVEY: 28 FEB 2024 4, 6, 19, 25 MAR 2024	
SCALE: ONE INCH = 200 FEET	
FIELD BOOKS: N/A	
REG. NO./FILE NO.: 55414/D/N3	
APPROVED: P. KEARNS FIELD ENGINEER	APPROVED: M. FORTE CIVIL ENGINEERING TECHNICIAN
APPROVED: P. BLADUR CHIEF OF SURVEY SUPPORT SECTION	APPROVED: J. MRAZ DEPUTY CHIEF OF SURVEYS AND MAPPING BRANCH
DATE: 28 MARCH 2024	
DEPARTMENT OF THE ARMY U.S. ARMY CORPS OF ENGINEERS NEW YORK DISTRICT NEW YORK, NEW YORK 10278	
OPERATIONS DIVISION SURVEYS AND MAPPING BRANCH CENAN-OP-SS	
NEW YORK HARBOR BAY RIDGE/RED HOOK CHANNELS CONDITION SURVEY	
VH-102 2 OF 6	

*FOR PROJECT SPECIFIC NOTES REFER TO SHEET VH-101

P
N
M
L
K
J
H
G
F
E
D
C
B
A



US ARMY CORPS OF ENGINEERS
NEW YORK DISTRICT

	PR	ESO	SC

DATES OF SURVEY:
28 FEB 2024
4, 6, 19, 25 MAR 2024

REG. NO./FILE NO.: 5414/D/N3

SCALE:
ONE INCH = 200 FEET

FIELD BOOKS:
N/A

APPROVED: P. HEARNS FIELD ENGINEER

APPROVED: M. FORTE CIVIL ENGINEERING TECHNICIAN

APPROVED: P. BHADUR CHIEF OF SURVEY SUPPORT SECTION

APPROVED: J. MRAZ DEPUTY CHIEF OF SURVEYS AND MAPPING BRANCH

DATE: 28 MARCH 2024

DEPARTMENT OF THE ARMY
U.S. ARMY CORPS OF ENGINEERS
NEW YORK DISTRICT
NEW YORK, NEW YORK 10278

OPERATIONS DIVISION
SURVEYS AND MAPPING BRANCH
CENAN-OP-SS

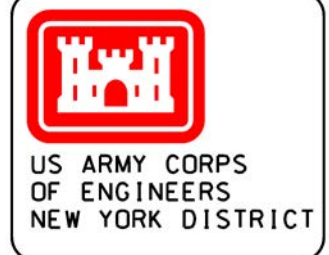
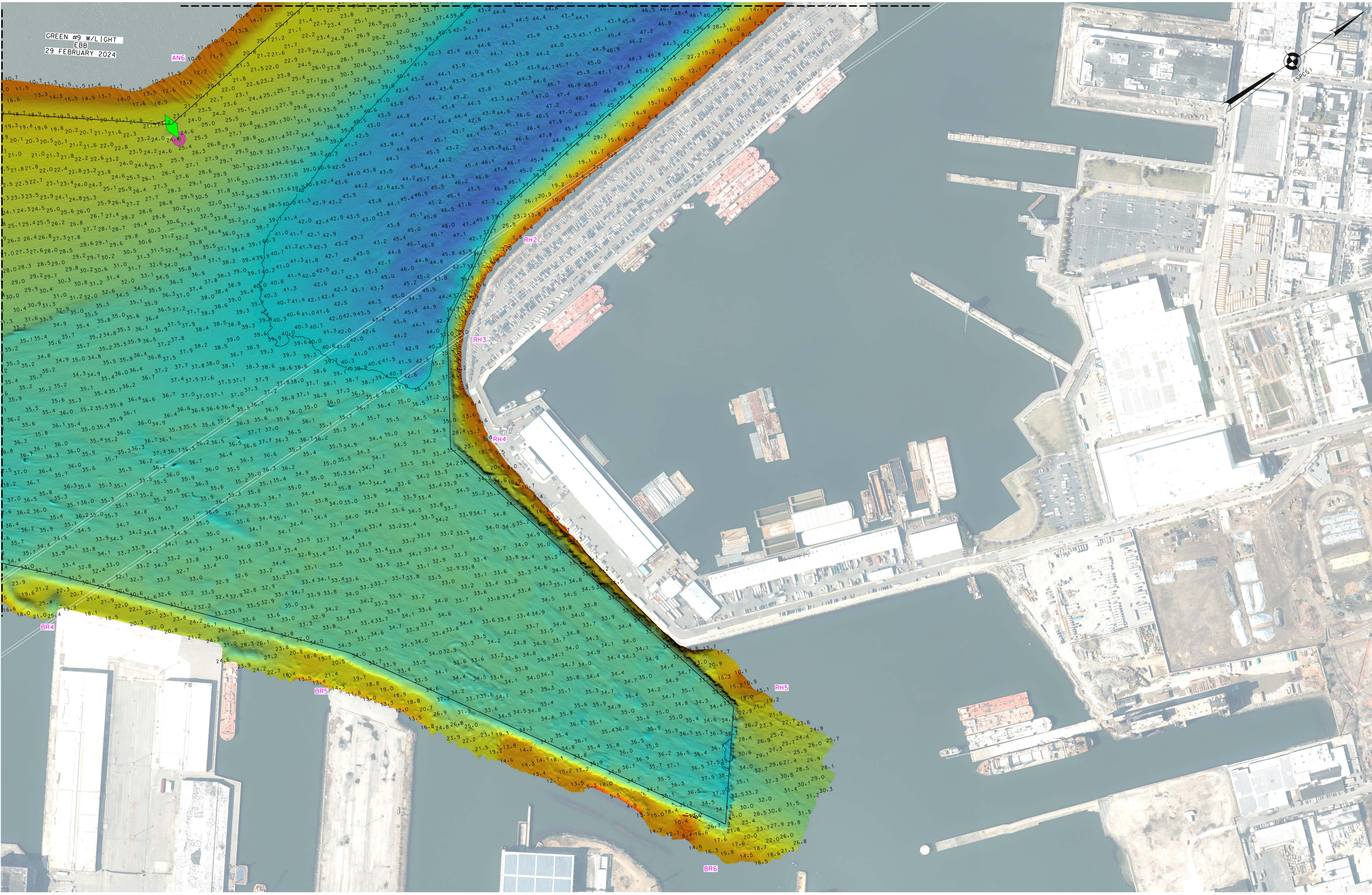
NEW YORK HARBOR
BAY RIDGE/RED HOOK CHANNELS
CONDITION SURVEY

VH-103
3 OF 6

*FOR PROJECT SPECIFIC NOTES REFER TO SHEET VH-101

MATCH TO SHEET 4

MATCH TO SHEET 6



US ARMY CORPS OF ENGINEERS
NEW YORK DISTRICT

PR	ESD	SC
MP		

DATES OF SURVEY:
28 FEB 2024
4, 6, 19, 25 MAR 2024

RED. NO./FILE NO.: 55414/D/N3

SCALE:
ONE INCH = 200 FEET

FIELD BOOKS:
N/A

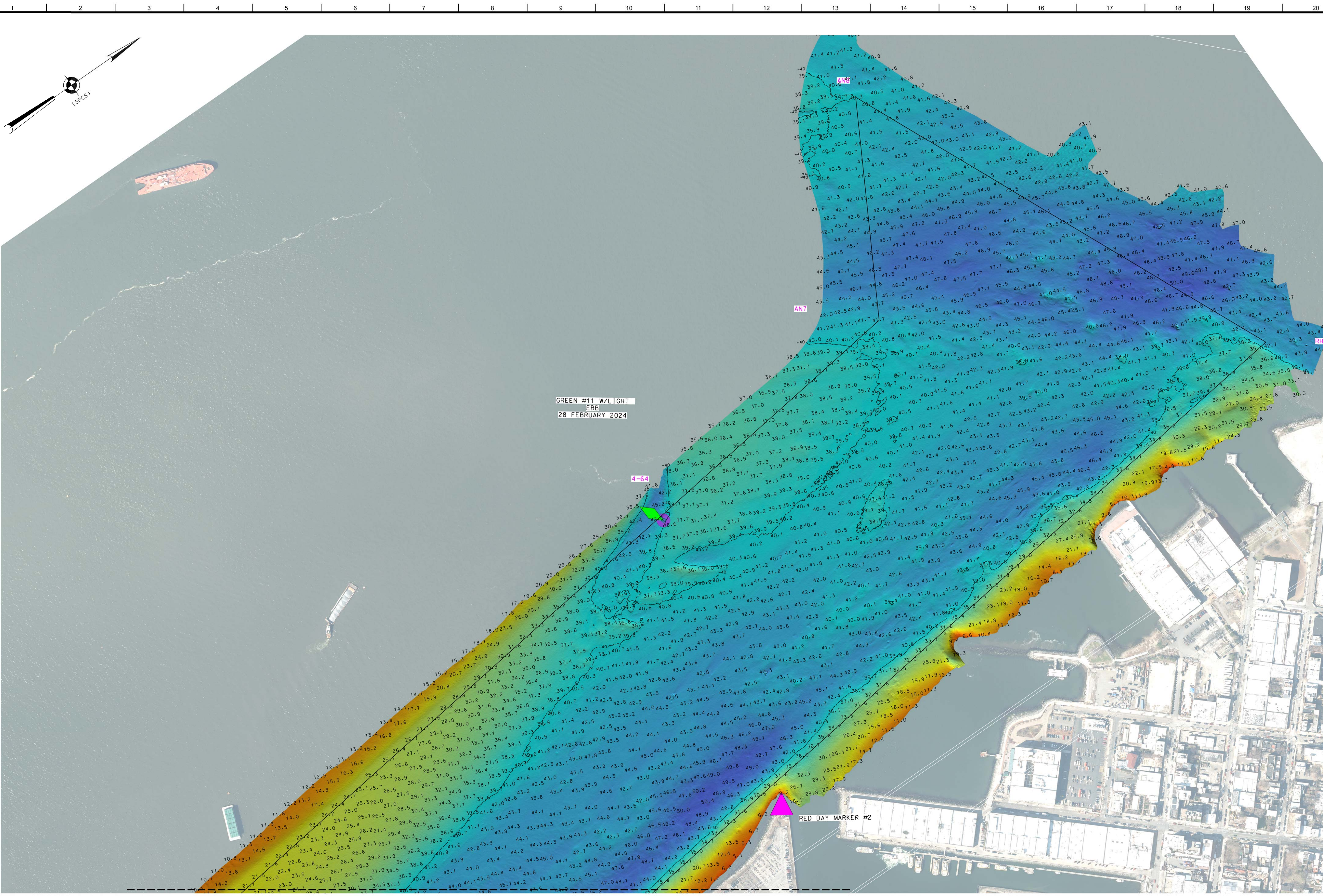
APPROVED: P. KEARNS FIELD COMMANDER
APPROVED: M. FORTE CIVIL ENGINEERING TECHNICIAN
APPROVED: P. BLOQUIER CHIEF OF SURVEY SUPPORT SECTION
APPROVED: J. MRAZ DEPUTY CHIEF OF SURVEYS AND MAPPING BRANCH
DATE: 28 MARCH 2024

DEPARTMENT OF THE ARMY
U.S. ARMY CORPS OF ENGINEERS
NEW YORK DISTRICT
NEW YORK, NEW YORK 10278

OPERATIONS DIVISION
SURVEYS AND MAPPING BRANCH
CENAN-OP-SS

NEW YORK HARBOR
BAY RIDGE/RED HOOK CHANNELS
CONDITION SURVEY

#FOR PROJECT SPECIFIC NOTES REFER TO SHEET VH-101

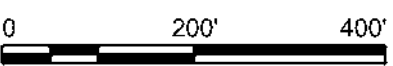


GREEN #11 W/LIGHT
EBB
28 FEBRUARY 2024

4-64

RED DAY MARKER #2

MATCH TO SHEET 5



US ARMY CORPS OF ENGINEERS
NEW YORK DISTRICT

PR	ESD	SC

DATES OF SURVEY:
28 FEB 2024
4.6.19.25 MAR 2024

REQ. NO./FILE NO.:55414/D/N3

SCALE:
ONE INCH = 200 FEET

FIELD BOOKS:
N/A

APPROVED: P. KEARNS FIELD ENGINEER

APPROVED: M. FORTE CIVIL ENGINEERING TECHNICIAN

APPROVED: P. BLOQUIER CHIEF OF SURVEY SUPPORT SECTION

APPROVED: J. MRAZ DEPUTY CHIEF OF SURVEYS AND MAPPING BRANCH

DATE: 28 MARCH 2024

DEPARTMENT OF THE ARMY
U.S. ARMY CORPS OF ENGINEERS
NEW YORK DISTRICT
NEW YORK, NEW YORK 10278

OPERATIONS DIVISION
SURVEYS AND MAPPING BRANCH
CENAN-OP-SS

NEW YORK HARBOR
BAY RIDGE/RED HOOK CHANNELS
CONDITION SURVEY

VH-106

6 OF 6

*FOR PROJECT SPECIFIC NOTES REFER TO SHEET VH-101