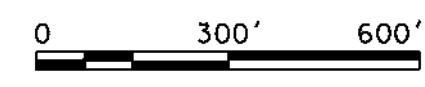
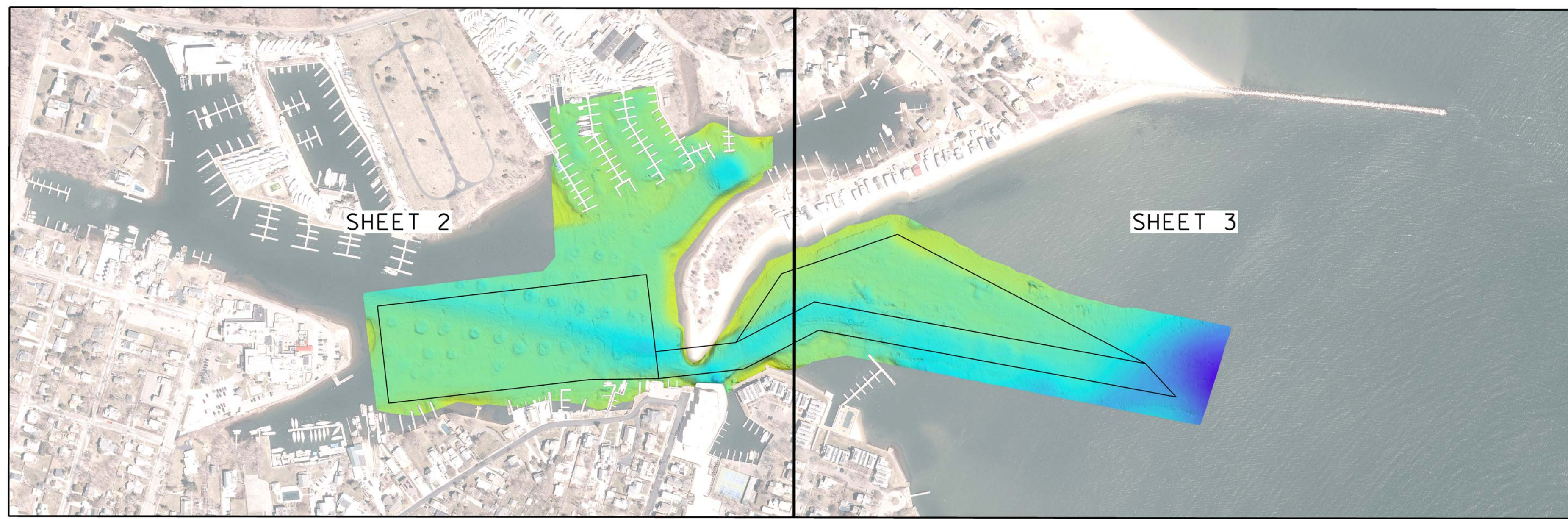
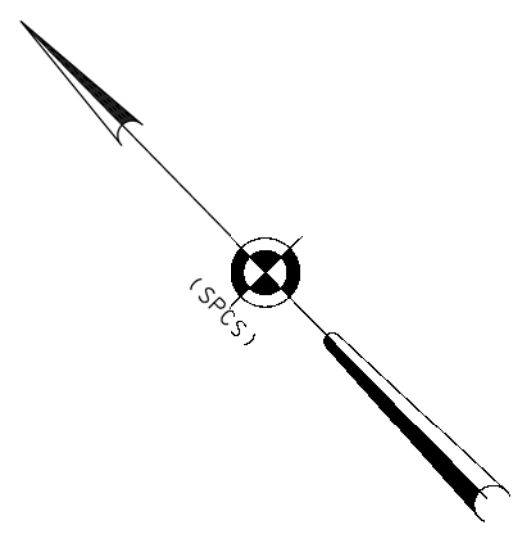


1 2 3 4 5 6 7 8 9 10 11 12 13 14 15 16 17 18 19 20

P
N
M
L
K
J
H
G
F
E
D
C
B
A



PROJECT SPECIFIC NOTES:

- THE INFORMATION DEPICTED ON THIS MAP REPRESENTS THE RESULTS OF SURVEYS MADE ON THE DATES INDICATED AND CAN ONLY BE CONSIDERED AS THE GENERAL CONDITIONS EXISTING AT THAT TIME.
- THE SOUNDINGS ON THIS MAP MEET EM 1110-2-1003 ACCURACY STANDARDS.
- THE TOPOGRAPHIC DATA ON THIS MAP MEET EM 1110-1-1005 ACCURACY STANDARDS.
- THIS MAP IS CEPO COMPLIANT IN ACCORDANCE WITH ER 1110-2-8160 AND EM 1110-2-6056.
- COORDINATES REFER TO US STATE PLANE COORDINATE SYSTEM NAD 1983, LONG ISLAND LAMBERT - ZONE 3104, US SURVEY FEET.
- SOUNDINGS ON THIS MAP REFER TO THE PLANE OF MEAN LOWER LOW WATER (MLLW) [EPOCH 1983-2001].
- MEAN LOWER LOW WATER IS 1.8 FEET BELOW NAVD88 AS DETERMINED USING VDATUM (VER. 4.6.1).
- SOUNDINGS DEPICTED ON THIS MAP ARE BASED ON A 3' x 3' MEDIAN CELL, SORTED TO A 30' INTERVAL.
- CONTOURS ON THIS MAP WERE GENERATED USING THE 3 x 3 DATA SET.
- THE DATA DEPICTED ON THIS MAP SHOULD NOT BE USED FOR VOLUME CALCULATION PURPOSES.
- AERIAL IMAGERY PROVIDED BY NYGIN 2023 AND IS FOR ORIENTATION PURPOSES ONLY.
- THIS SURVEY WAS PERFORMED USING REAL TIME KINEMATIC GPS FROM STATION "GREENPORT".

LOCAL CONTROL DATA	
BENCHMARK: TIDAL 4 STA 11 29 (PID:LX0243)	
ELEVATION: 9.72' (NAVD 1988)	

NSRS BENCHMARK	
BENCHMARK: Y 325 (PID:LX0244)	
ELEVATION: 11.29' (NAVD 1988)	



US ARMY CORPS OF ENGINEERS
NEW YORK DISTRICT

	EO	SC
	PR	MP

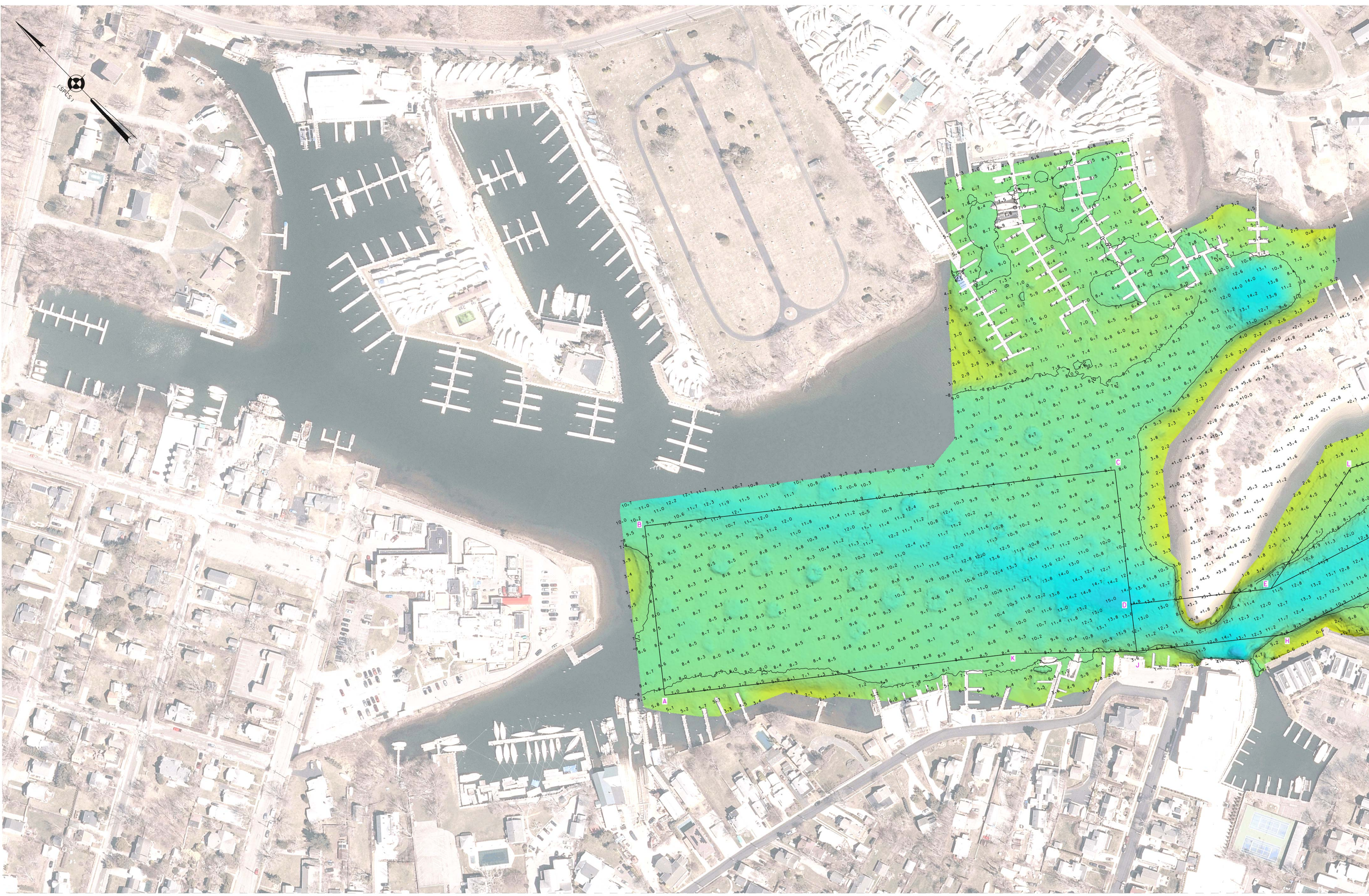
DATE OF SURVEY:	8 MAY 2024
SCALE:	ONE INCH = 300 FEET
FIELD BOOKS:	1053
RED. NO./FILE NO.:	15437/N4

APPROVED:	J. MCKELVEY FIELD CARTOGRAPHER
APPROVED:	M. FORTE CIVIL ENGINEERING TECHNICIAN
APPROVED:	P. BRADUR CHIEF OF SURVEY SUPPORT SECTION
APPROVED:	J. MRAZ DEPUTY CHIEF OF SURVEYS AND MAPPING BRANCH
DATE:	13 MAY 2024

DEPARTMENT OF THE ARMY
U.S. ARMY CORPS OF ENGINEERS
NEW YORK DISTRICT
NEW YORK, NEW YORK 10278
OPERATIONS DIVISION
SURVEYS AND MAPPING BRANCH
CENAN-OP-SS

GREENPORT HARBOR
NEW YORK
CONDITION SURVEY

VH-101
1 OF 3



US ARMY CORPS OF ENGINEERS
NEW YORK DISTRICT

PR	EQ	SC
MP		

DATE OF SURVEY:
8 MAY 2024

FIELD BOOKS:
1053

RED. NO./FILE NO.: 15437/N4

SCALE:
ONE INCH = 100 FEET

APPROVED: J. MCKELVEY FIELD CARTOGRAPHER
APPROVED: M. FORTE CIVIL ENGINEERING TECHNICIAN
APPROVED: P. BLADUR CHIEF OF SURVEY SUPPORT SECTION
APPROVED: J. MRAZ DEPUTY CHIEF OF SURVEYS AND MAPPING BRANCH
DATE: 13 MAY 2024

DEPARTMENT OF THE ARMY
U.S. ARMY CORPS OF ENGINEERS
NEW YORK DISTRICT
NEW YORK, NEW YORK 10278

OPERATIONS DIVISION
SURVEYS AND MAPPING BRANCH
CENAM-OP-SS

GREENPORT HARBOR
NEW YORK

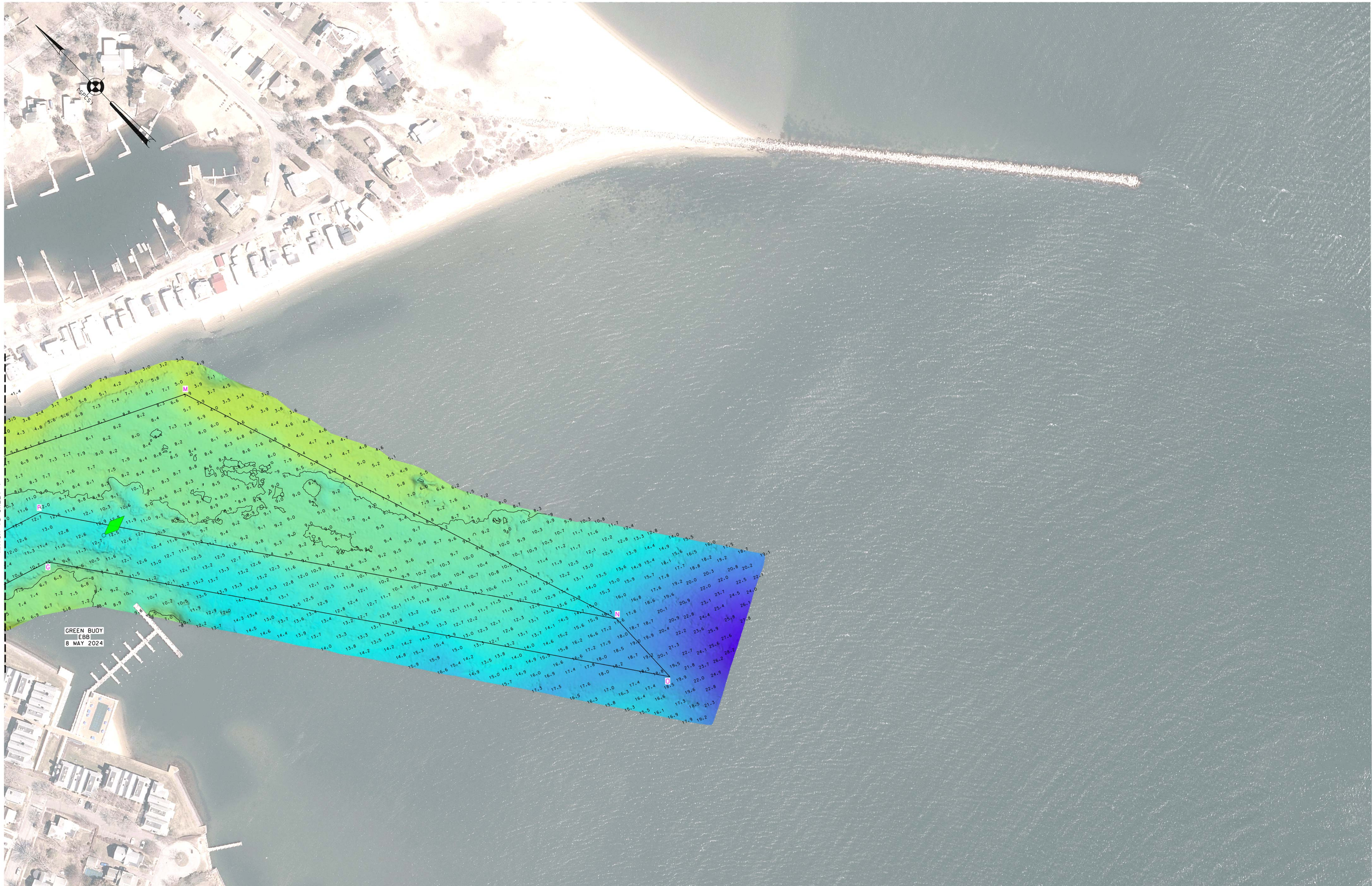
CONDITION SURVEY

VH-102
2 OF 3

* FOR PROJECT SPECIFIC NOTES REFER TO SHEET VH-101

MATCH TO SHEET 2

P
N
M
L
K
J
H
G
F
E
D
C
B
A



US ARMY CORPS OF ENGINEERS NEW YORK DISTRICT

	EO	SC
	PR	MF

DATES OF SURVEY:
8 MAY 2024

REQ. NO./FILE NO.: 5437/44

SCALE:
ONE INCH = 100 FEET

FIELD BOOKS:
1053

APPROVED: J. MCKELVEY FIELD CARTOGRAPHER
APPROVED: M. FORTE CIVIL ENGINEERING TECHNICIAN
APPROVED: P. BLADUR CHIEF OF SURVEY SUPPORT SECTION
APPROVED: J. MRAZ DEPUTY CHIEF OF SURVEYS AND MAPPING BRANCH
DATE: 13 MAY 2024

DEPARTMENT OF THE ARMY
U.S. ARMY CORPS OF ENGINEERS
NEW YORK DISTRICT
NEW YORK, NEW YORK 10278
OPERATIONS DIVISION
SURVEYS AND MAPPING BRANCH
CEMAN-OP-SS

GREENPORT HARBOR
NEW YORK
CONDITION SURVEY