

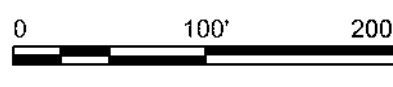
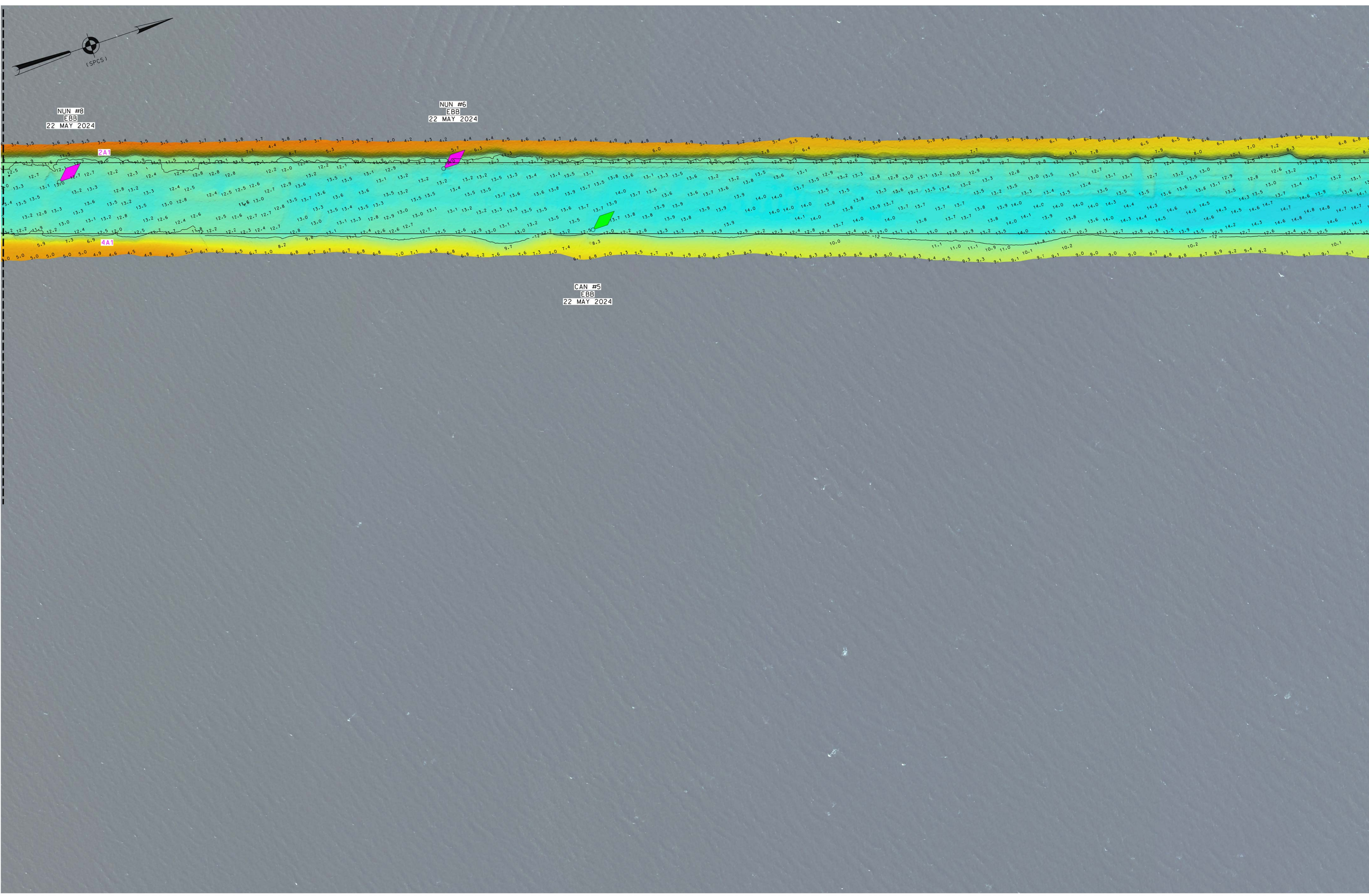








P  
N  
M  
L  
K  
J  
H  
G  
F  
E  
D  
C  
B  
A



U.S. ARMY CORPS OF ENGINEERS  
NEW YORK DISTRICT

PR	SC	CM	SC
MP			

DATES OF SURVEY:  
22-23 MAY 2024

FIELD BOOKS:  
D1A10

REG. NO./FILE NO.: 5441/N3

SCALE:  
ONE INCH = 100 FEET

APPROVED: N. VITOLD, FIELD CARTOGRAPHER  
APPROVED: M. FORTE, CIVIL ENGINEERING TECHNICIAN  
APPROVED: P. BALDUR, CHIEF OF SURVEY SUPPORT SECTION  
APPROVED: J. MRAZ, DEPUTY CHIEF OF SURVEYS AND MAPPING BRANCH  
DATE: 29 MAY 2024

DEPARTMENT OF THE ARMY  
U.S. ARMY CORPS OF ENGINEERS  
NEW YORK DISTRICT  
NEW YORK, NEW YORK 10278

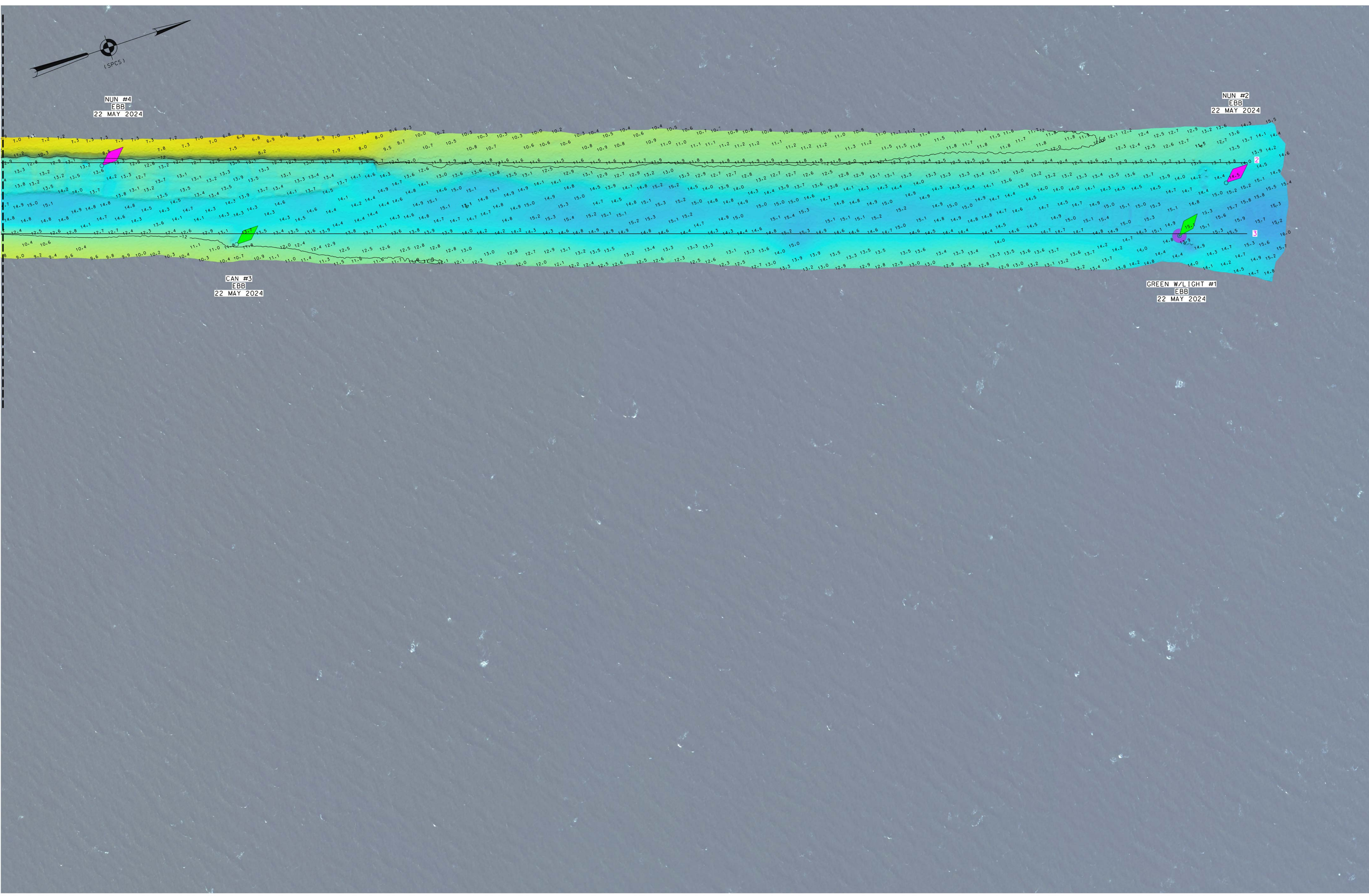
OPERATIONS DIVISION  
SURVEYS AND MAPPING BRANCH  
CENAN-OP-SS

SHOAL HARBOR & COMPTON CREEK  
NEW JERSEY  
CONDITION SURVEY

VH-103  
3 OF 4



P  
N  
M  
L  
K  
J  
H  
G  
F  
E  
D  
C  
B  
A



U.S. ARMY CORPS OF ENGINEERS  
NEW YORK DISTRICT

PR	SC	CM	SC
MP			

DATE OF SURVEY:  
22-23 MAY 2024

REG. NO./FILE NO.: 15441/N3

SCALE:  
ONE INCH = 100 FEET

FIELD BOOKS:  
D1A10

APPROVED: N. VITOLD, FIELD CARTOGRAPHER

APPROVED: M. FORTE, CIVIL ENGINEERING TECHNICIAN

APPROVED: P. BRADUR, CHIEF OF SURVEY SUPPORT SECTION

APPROVED: J. MRAZ, DEPUTY CHIEF OF SURVEYS AND MAPPING BRANCH

DATE: 29 MAY 2024

DEPARTMENT OF THE ARMY  
U.S. ARMY CORPS OF ENGINEERS  
NEW YORK DISTRICT  
NEW YORK, NEW YORK 10278

OPERATIONS DIVISION  
SURVEYS AND MAPPING BRANCH  
CENAN-OP-SS

SHOAL HARBOR & COMPTON CREEK  
NEW JERSEY  
CONDITION SURVEY

VH-104  
4 OF 4