



US ARMY CORPS
OF ENGINEERS
NEW YORK DISTRICT

	JHS.EQ
	JHS.SG
PR	
MP	

DATES OF SURVEY:
5-8, 12-14, 19-23, 26 AUG
3, 4 SEPT 2024

REQ. NO./FILE NO.: 5476/N3/N4

SCALE:
ONE INCH = 100 FEET

FIELD BOOKS:
1053

APPROVED:	J. MCKELVEY/A. VITOLO
	FIELD CARTOGRAPHER
APPROVED:	M. FORTE
	CIVIL ENGINEERING TECHNICIAN
APPROVED:	P. BHADUR
	CHIEF OF SURVEY SUPPORT SECTION
APPROVED:	J. MRAZ
	DEPUTY CHIEF OF SURVEYS AND MAPPING BRANCH
DATE:	25 SEPTEMBER 2024

DEPARTMENT OF THE ARMY
U.S. ARMY CORPS OF ENGINEERS
NEW YORK DISTRICT
NEW YORK, NEW YORK 10278

OPERATIONS DIVISION
SURVEYS AND MAPPING BRANCH
CENAN-OP-SS

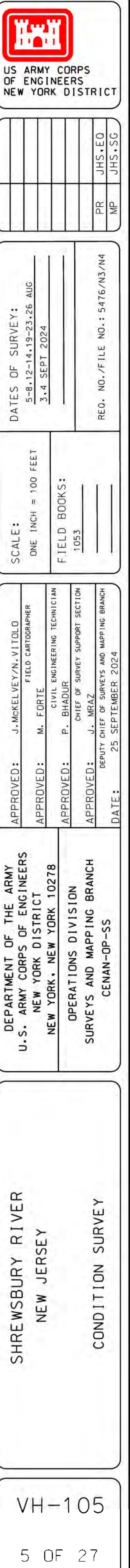
SHREWSBURY RIVER
NEW JERSEY
CONDITION SURVEY

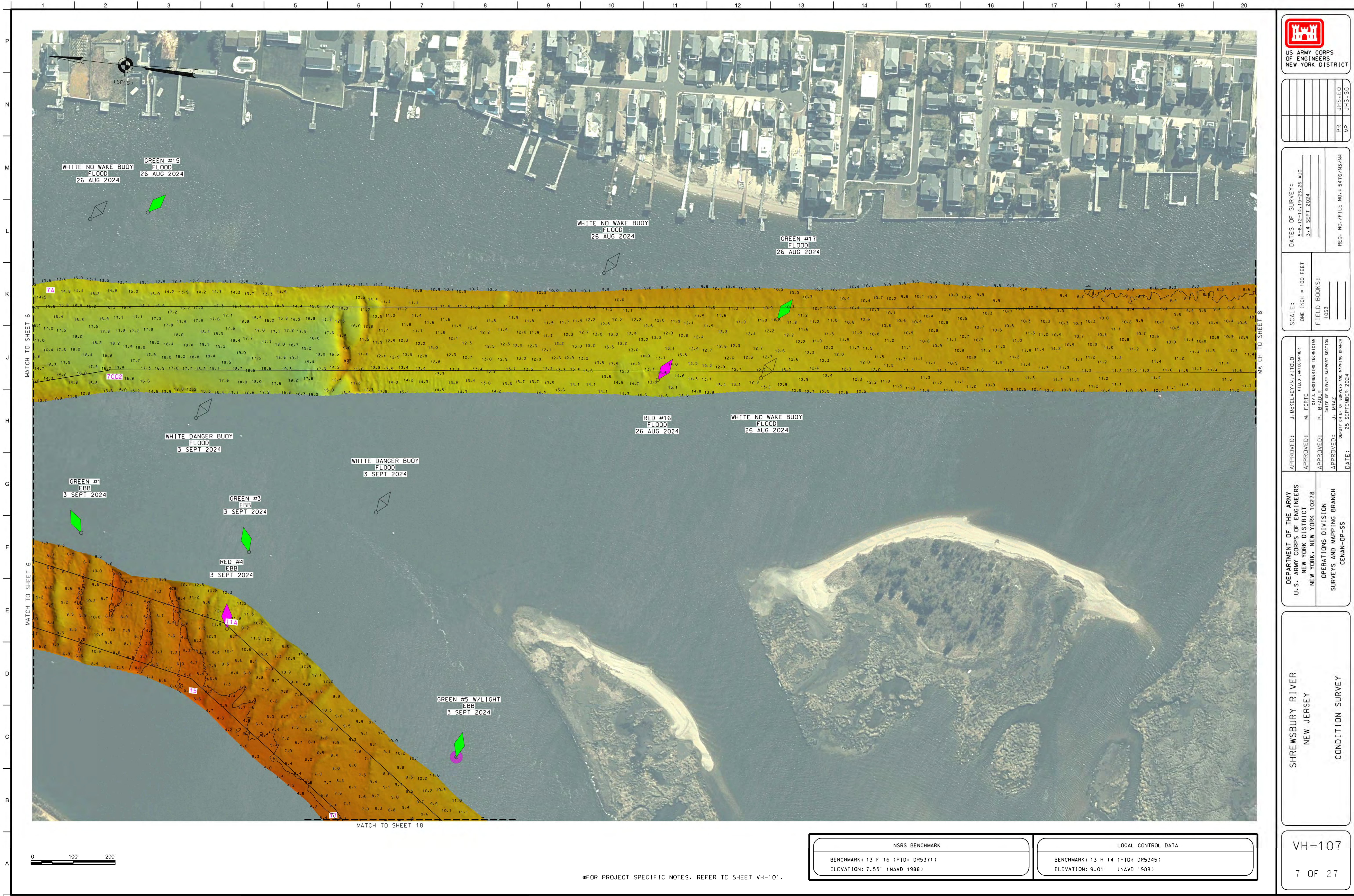
VH-104

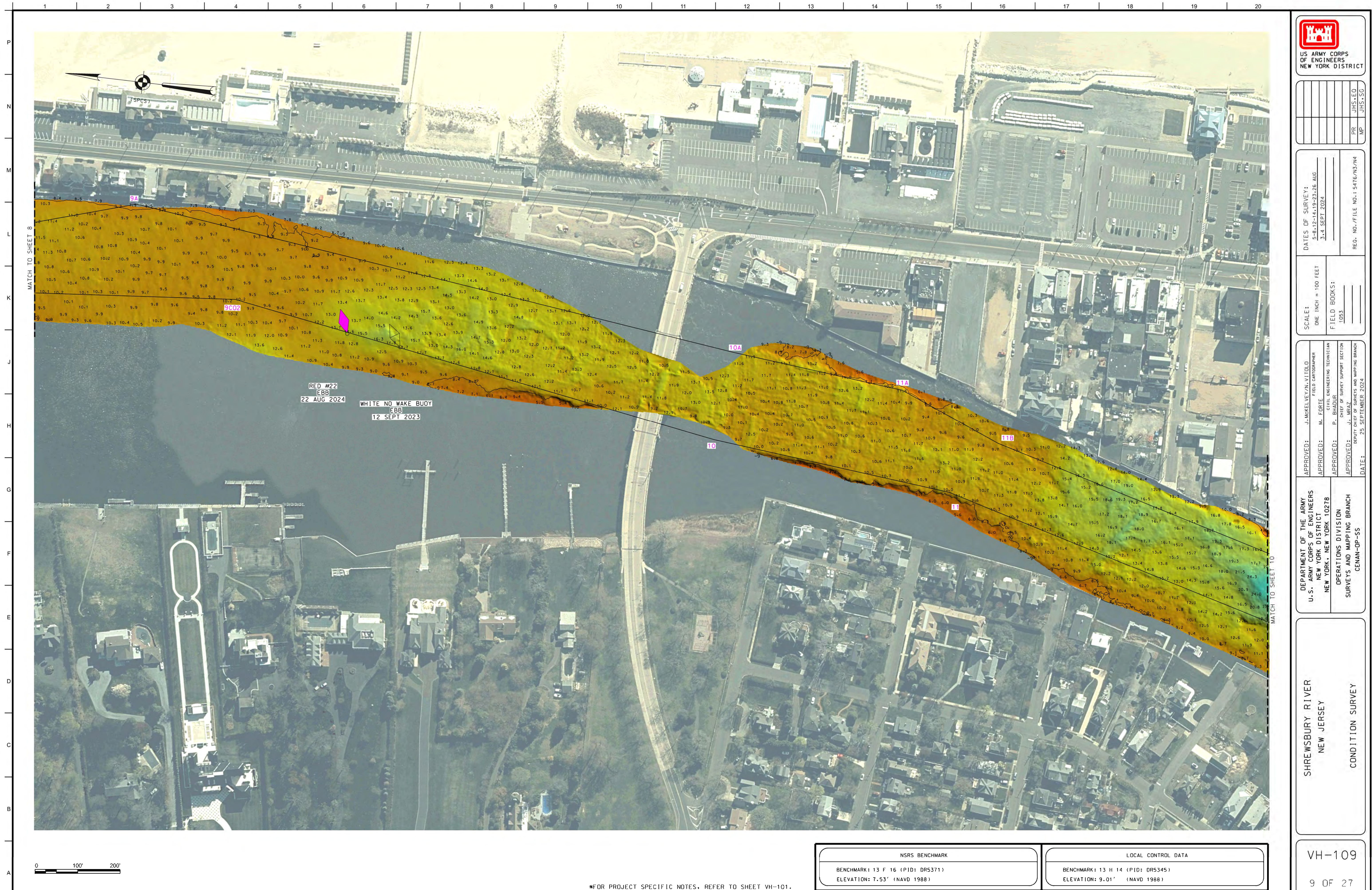
4 OF 27

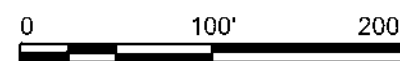
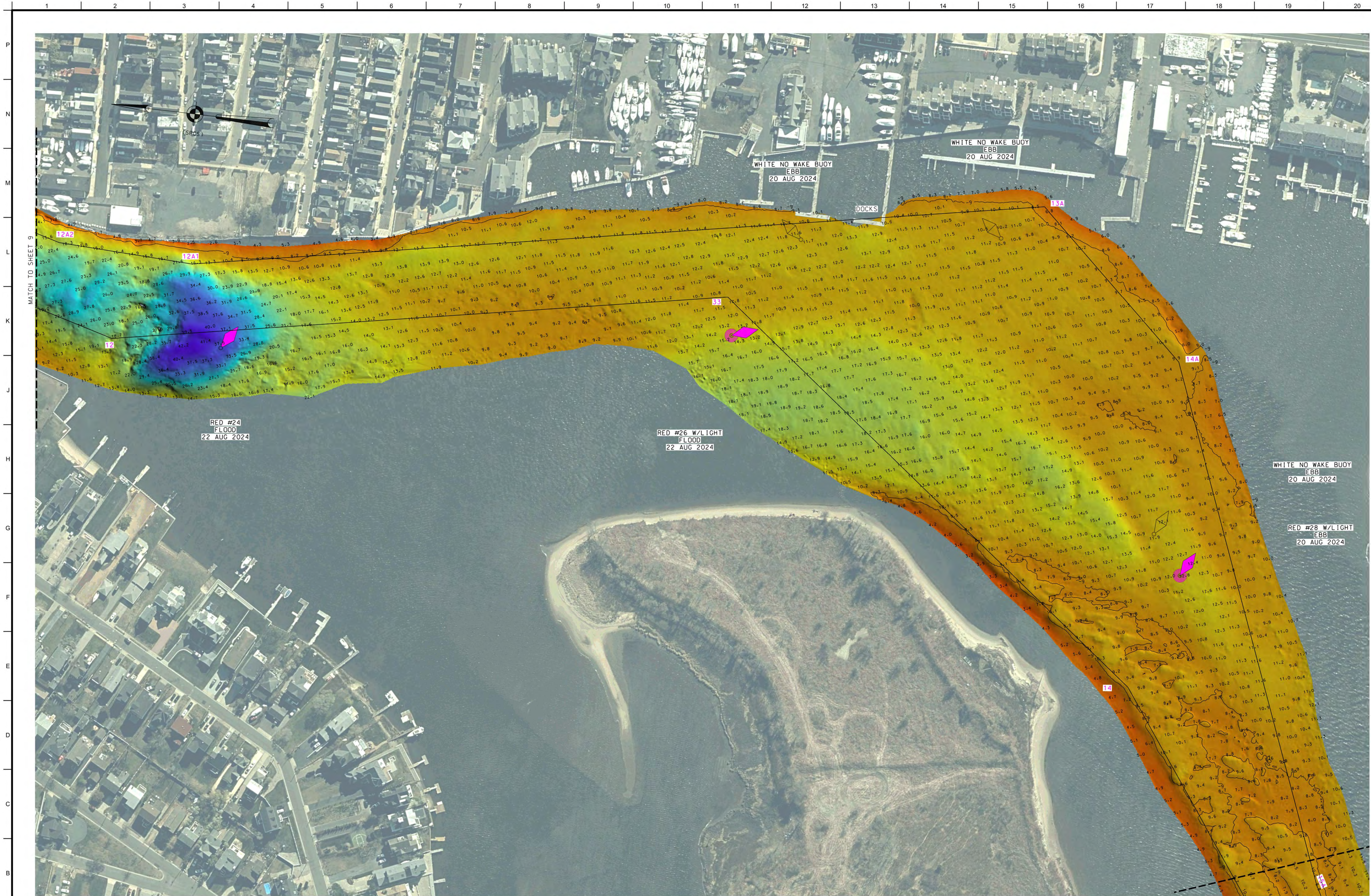
100' 200'

NSRS BENCHMARK	LOCAL CONTROL DATA
BENCHMARK: 13 F 16 (PID: DR5371) ELEVATION: 7.53' (NAVD 1988)	BENCHMARK: 13 H 14 (PID: DR5345) ELEVATION: 9.01' (NAVD 1988)









*FOR PROJECT SPECIFIC NOTES, REFER TO SHEET VH-101.

NSRS BENCHMARK	LOCAL CONTROL DATA
BENCHMARK: 13 F 16 (PID: DR5371) ELEVATION: 7.53' (NAVD 1988)	BENCHMARK: 13 H 14 (PID: DR5345) ELEVATION: 9.01' (NAVD 1988)

US ARMY CORPS OF ENGINEERS
NEW YORK DISTRICT

DATES OF SURVEY: 5-8-12-14, 19-23-26 AUG 3-4 SEPT 2024		SCALE: ONE INCH = 100 FEET	
REQ. NO./FILE NO.: 5476/M3/M4		FIELD BOOKS: 1053	

APPROVED: J. MCKELVEY/A.VITOLD FIELD CARTOGRAPHER	APPROVED: M. FORTE CHIEF ENGINEERING TECHNICIAN
APPROVED: P. BIAJUS CHIEF OF SURVEY SUPPORT SECTION	APPROVED: J.L. MRAZ DEPUTY CHIEF OF SURVEYS AND MAPPING BRANCH
DATE: 25 SEPTEMBER 2024	

DEPARTMENT OF THE ARMY
U.S. ARMY CORPS OF ENGINEERS
NEW YORK DISTRICT
NEW YORK, NEW YORK 10278

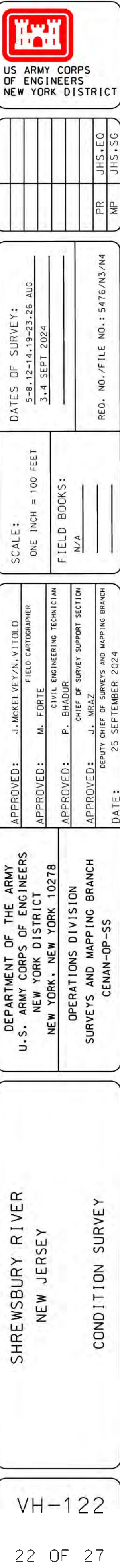
OPERATIONS DIVISION
SURVEYS AND MAPPING BRANCH
CCNAN-OP-SS

SHREWSBURY RIVER
NEW JERSEY

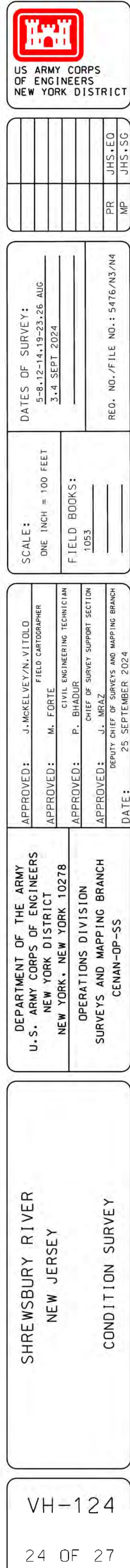
CONDITION SURVEY

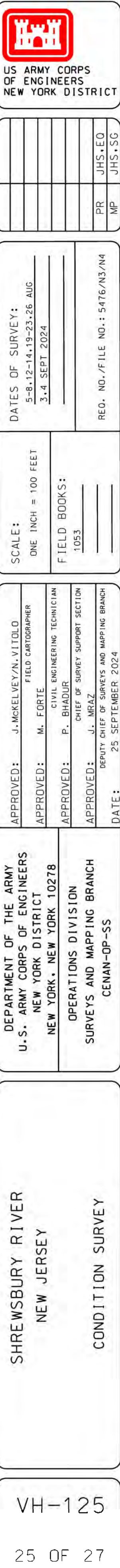
VH-110

10 OF 27





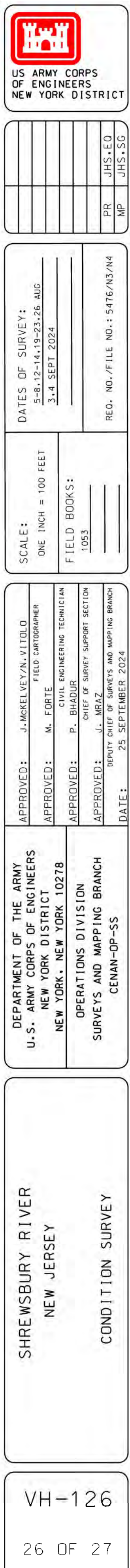






*FOR PROJECT SPECIFIC NOTES, REFER TO SHEET VH-101.

LOCAL CONTROL DATA	
BENCHMARK:	13 H 14 (PID: DR5345)
ELEVATION:	9.01' (NAVD 1988)





*FOR PROJECT SPECIFIC NOTES, REFER TO SHEET VH-101.

BENCHMARK: 13 F 16 (PID: DR5371)
ELEVATION: 7.53' (NAVD 1988)

BENCHMARK: 13 H 14 (PID: DR5345)
ELEVATION: 9.01' (NAVD 1988)

US ARMY CORPS
OF ENGINEERS
NEW YORK DISTRICT

[illegible]

DATES OF SURVEY:

5-8, 12-14, 19-23
3, 4 SEPT 2024

REQ. NO./FILE NO.: 5476/N3/N4

SCALE:

ONE INCH = 100 FEET

1053

APPROVED: J. MCKELVEY/N. VITOLO

APPROVED: M. FORTE

APPROVED: P. BHADUR

CHIEF OF SURVEY SUPPORT SECTION

APPROVED: J. MRAZ

DATE: 25 SEPTEMBER 2024

DEPARTMENT OF THE ARMY
U.S. ARMY CORPS OF ENGINEERS
NEW YORK DISTRICT
NEW YORK, NEW YORK 10278

OPERATIONS DIVISION
SURVEYS AND MAPPING BRANCH

CENAN-OP-SS

SHREWSBURY RIVER
NEW JERSEY

VH-127

27 OF 27