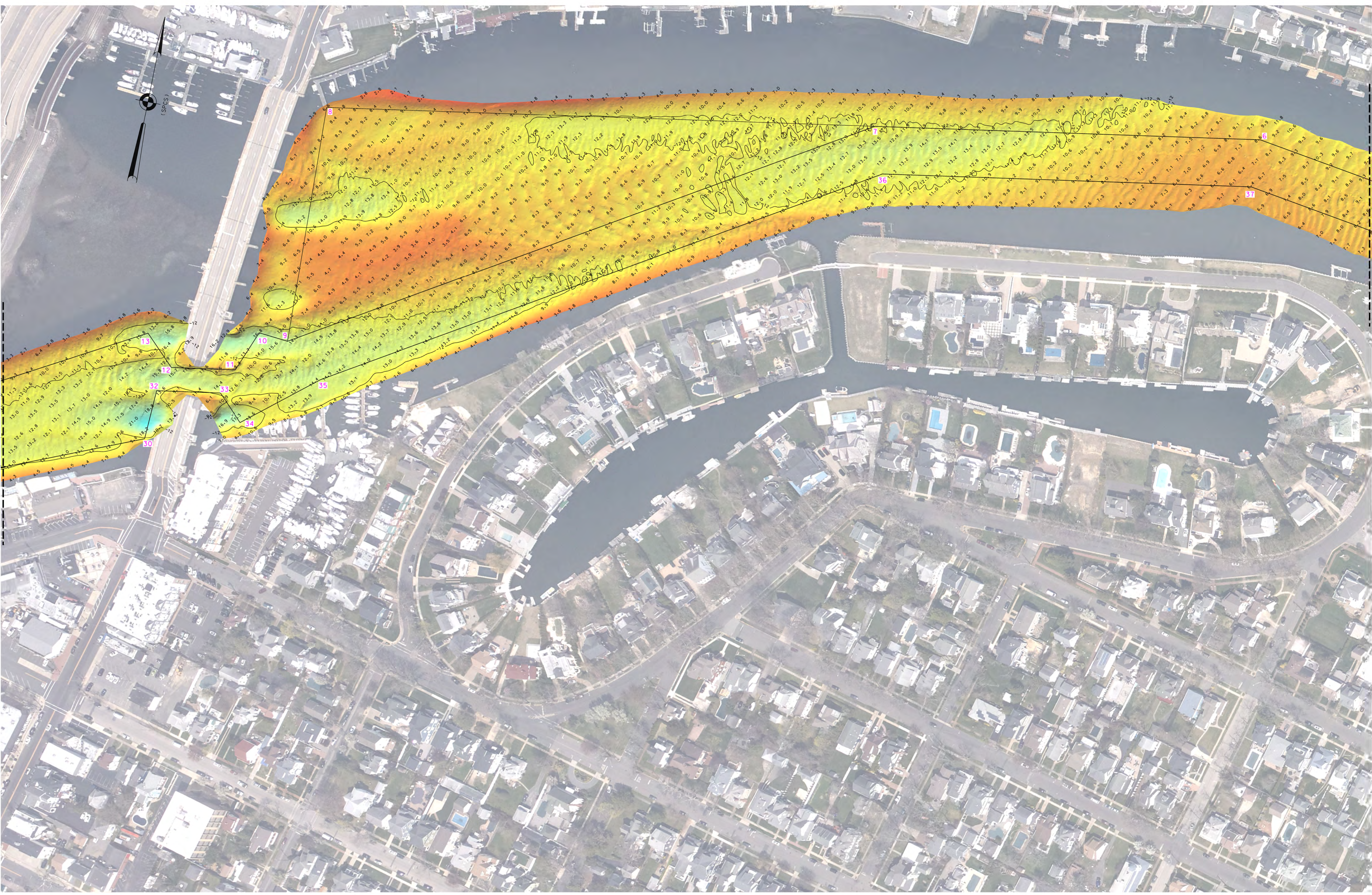


P
N
M
L
K
J
I
H
G
F
E
D
C
B
A



0 100' 200'

*FOR PROJECT SPECIFIC NOTES, REFER TO SHEET VH-101.



US ARMY CORPS OF ENGINEERS
NEW YORK DISTRICT

PR	CFW
MP	CFW

DATE OF SURVEY:
04.09.10 SEPTEMBER 2024

REQ. NO./FILE NO.: 15481

SCALE:
ONE INCH = 100 FEET

FIELD BOOKS:
1053

APPROVED: N. VITOLD FIELD CARTOGRAPHER

APPROVED: M. FORTE CIVIL ENGINEERING TECHNICIAN

APPROVED: P. BALDUS CHIEF OF SURVEY SUPPORT SECTION

APPROVED: J.L. MRAZ DEPUTY CHIEF OF SURVEYS AND MAPPING BRANCH

DATE: 17 SEPTEMBER 2024

DEPARTMENT OF THE ARMY
U.S. ARMY CORPS OF ENGINEERS
NEW YORK DISTRICT
NEW YORK, NEW YORK 10278

OPERATIONS DIVISION
SURVEYS AND MAPPING BRANCH
CENAN-OP-SS

SHARK RIVER
NEW JERSEY

CONDITION SURVEY

NSRS BENCHMARK

BENCHMARK: RTK FISHERMAN
ELEVATION: 3.96' (NAVD 1988)

LOCAL CONTROL

BENCHMARK: BELMAR AZ MK (PID:KV0804)
ELEVATION: 5.08' (NAVD 1988)

VH-103

3 OF 4

