

**PROJECT SPECIFIC NOTES:**

- THE INFORMATION DEPICTED ON THIS MAP REPRESENTS THE RESULTS OF SURVEYS MADE ON THE DATES INDICATED AND CAN ONLY BE CONSIDERED AS THE GENERAL CONDITIONS EXISTING AT THAT TIME.
- THE SOUNDINGS ON THIS MAP MEET EM 1110-2-1003 ACCURACY STANDARDS.
- THIS MAP IS CEPD COMPLIANT IN ACCORDANCE WITH ER 1110-2-8160 AND EM 1110-2-6056.
- COORDINATES REFER TO US STATE PLANE COORDINATE SYSTEM NAD 1983, NEW JERSEY MERCATOR - ZONE 2900, US SURVEY FEET.
- SOUNDINGS ON THIS MAP REFER TO THE PLANE OF MEAN LOWER LOW WATER (MLLW) [EPOCH 1983-2001].
- MEAN LOWER LOW WATER IS 3.0 FEET BELOW NAVD88 AS DETERMINED USING VDATUM (VER. 4.6.1).
- SOUNDINGS DEPICTED ON THIS MAP ARE BASED ON A 3' x 3' MEDIAN CELL, SORTED TO A 30' INTERVAL.
- CONTOURS ON THIS MAP WERE GENERATED USING THE 3' x 3' DATA SET.
- THE DATA DEPICTED ON THIS MAP SHOULD NOT BE USED FOR VOLUME CALCULATION PURPOSES.
- AERIAL IMAGERY PROVIDED BY NJGIN WAREHOUSE 2019 AND IS FOR ORIENTATION PURPOSES ONLY.
- THIS SURVEY WAS PERFORMED USING REAL TIME KINEMATIC GPS FROM STATION "RTK ELIZ PARK".

NSRS BENCHMARK	LOCAL CONTROL DATA
BENCHMARK: R37 (PID: KVO234) ELEVATION: 32.45' (NAVD 1988)	BENCHMARK: RTK ELIZ PARK (COE PID: CM4261) ELEVATION: 13.77' (NAVD 1988)



U.S. ARMY CORPS OF ENGINEERS  
NEW YORK DISTRICT

	CM-JHS	SC
	MP	

DATES OF SURVEY: 29-30 AUGUST 2024 3 SEPTEMBER 2024	REG. NO./FILE NO.: 15485/D
---	----------------------------

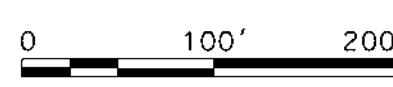
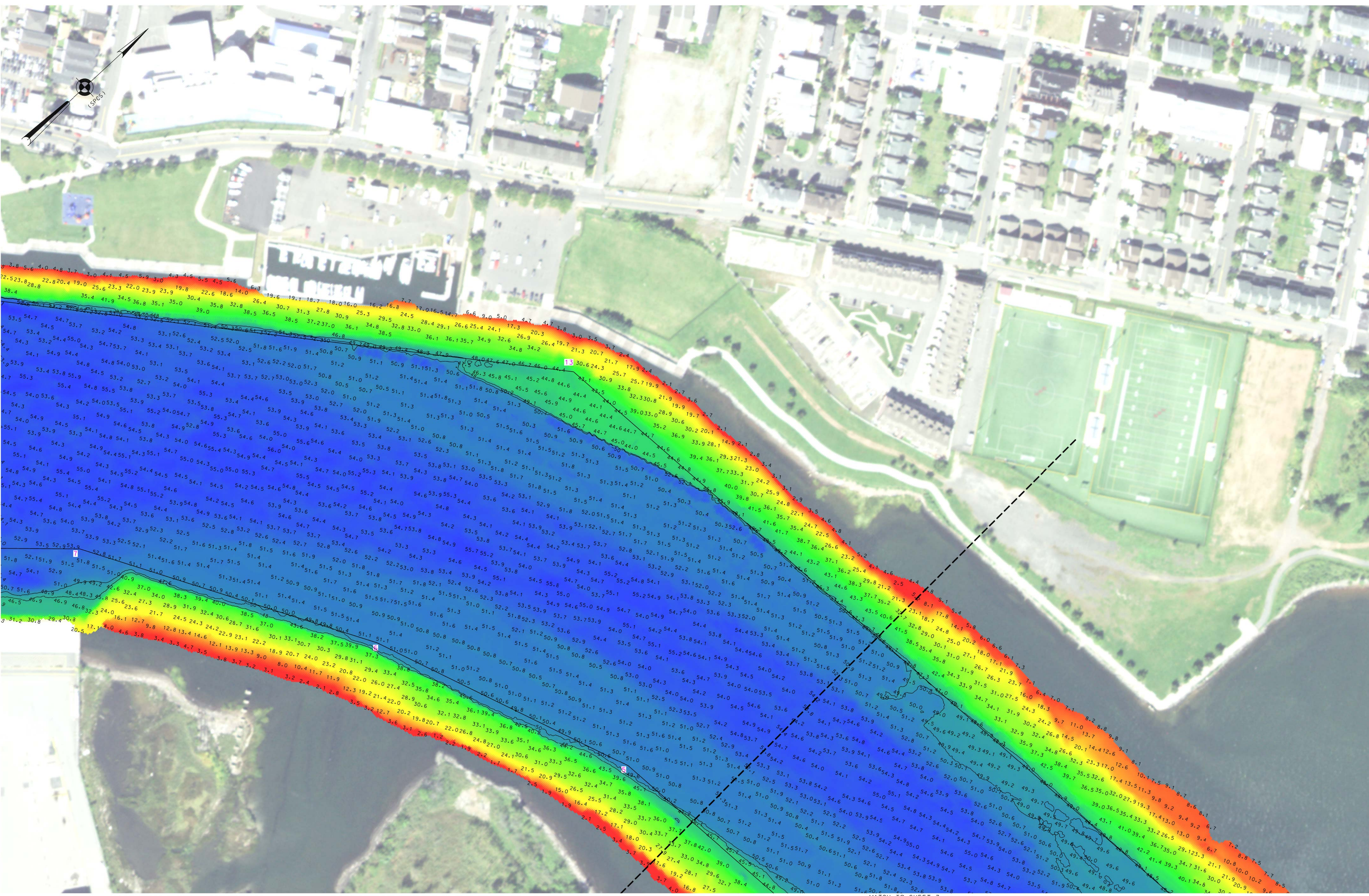
SCALE: ONE INCH = 600 FEET	FIELD BOOKS: DNA 10
-------------------------------	------------------------

APPROVED:	P. KEARNS	FIELD CARTOGRAPHER
APPROVED:	M. FORTÉ	CIVIL ENGINEERING TECHNICIAN
APPROVED:	P. BRADUR	CHIEF OF SURVEY SUPPORT SECTION
APPROVED:	J. MRAZ	DEPUTY CHIEF OF SURVEYS AND MAPPING BRANCH
DATE:	5 SEPTEMBER 2024	

DEPARTMENT OF THE ARMY  
U.S. ARMY CORPS OF ENGINEERS  
NEW YORK DISTRICT  
NEW YORK, NEW YORK 10278  
OPERATIONS DIVISION  
SURVEYS AND MAPPING BRANCH  
CEMAN-OP-SS

NEW YORK AND NEW JERSEY CHANNELS  
ARTHUR KILL  
AFTER DREDGE SURVEY

P  
N  
M  
L  
K  
J  
H  
G  
F  
E  
D  
C  
B  
A



MATCH TO SHEET 3

NSRS BENCHMARK
BENCHMARK: R37 (PID: KV0234)
ELEVATION: 32.45' (NAVD 1988)

LOCAL CONTROL DATA
BENCHMARK: RTK ELIZ PARK (CODE PID: CM4261)
ELEVATION: 13.77' (NAVD 1988)

\* REFER TO SHEET VH-101 FOR PROJECT SPECIFIC NOTES



CM	JHS	SC
PR		MP

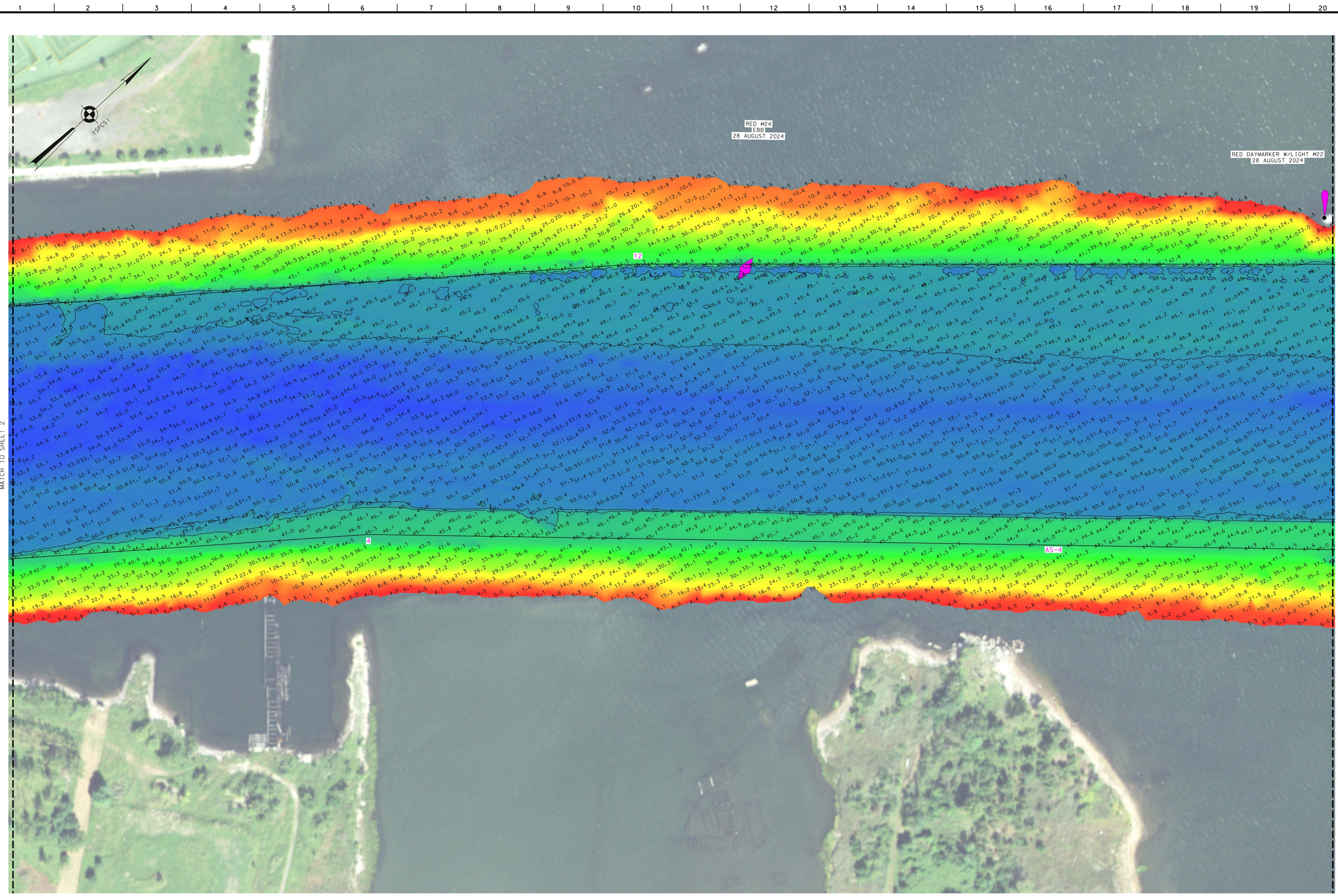
DATES OF SURVEY: 29-30 AUGUST 2024 3 SEPTEMBER 2024	SCALE: ONE INCH = 100 FEET FIELD BOOKS: DNA 10	REG. NO./FILE NO.: 15485/D
---	---	----------------------------

APPROVED: P. KEARNS FIELD ENGINEER	APPROVED: M. FORTE CIVIL ENGINEERING TECHNICIAN	APPROVED: P. BLADIER CHIEF OF SURVEY SUPPORT SECTION	APPROVED: J. MRAZ DEPUTY CHIEF OF SURVEYS AND MAPPING BRANCH
---------------------------------------	--	---	---

DEPARTMENT OF THE ARMY U.S. ARMY CORPS OF ENGINEERS NEW YORK DISTRICT NEW YORK, NEW YORK 10278	OPERATIONS DIVISION SURVEYS AND MAPPING BRANCH CENAN-OP-SS
---	--

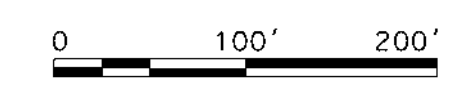
NEW YORK AND NEW JERSEY CHANNELS ARTHUR KILL AFTER DREDGE SURVEY
--

VH-102 2 OF 5
------------------



MATCH TO SHEET 2

MATCH TO SHEET 4



NSRS BENCHMARK	
BENCHMARK: R37 (PID: KV0234)	ELEVATION: 32.45' (NAVD 1988)

LOCAL CONTROL DATA	
BENCHMARK: RTK ELIZ PARK (COE PID: CM4261)	ELEVATION: 13.77' (NAVD 1988)

\* REFER TO SHEET VH-101 FOR PROJECT SPECIFIC NOTES



US ARMY CORPS OF ENGINEERS  
NEW YORK DISTRICT

PR	CM/JHS	SC
MP		

DATES OF SURVEY:  
29-30 AUGUST 2024  
3-5 SEPTEMBER 2024

SCALE:  
ONE INCH = 100 FEET

FIELD BOOKS:  
DNA 10

APPROVED: P. KEARNS FIELD CARTOGRAPHER

APPROVED: M. FORTE CIVIL ENGINEERING TECHNICIAN

APPROVED: P. BHADUR CHIEF OF SURVEY SUPPORT SECTION

APPROVED: J. MRAZ DEPUTY CHIEF OF SURVEYS AND MAPPING BRANCH

DATE: 5 SEPTEMBER 2024

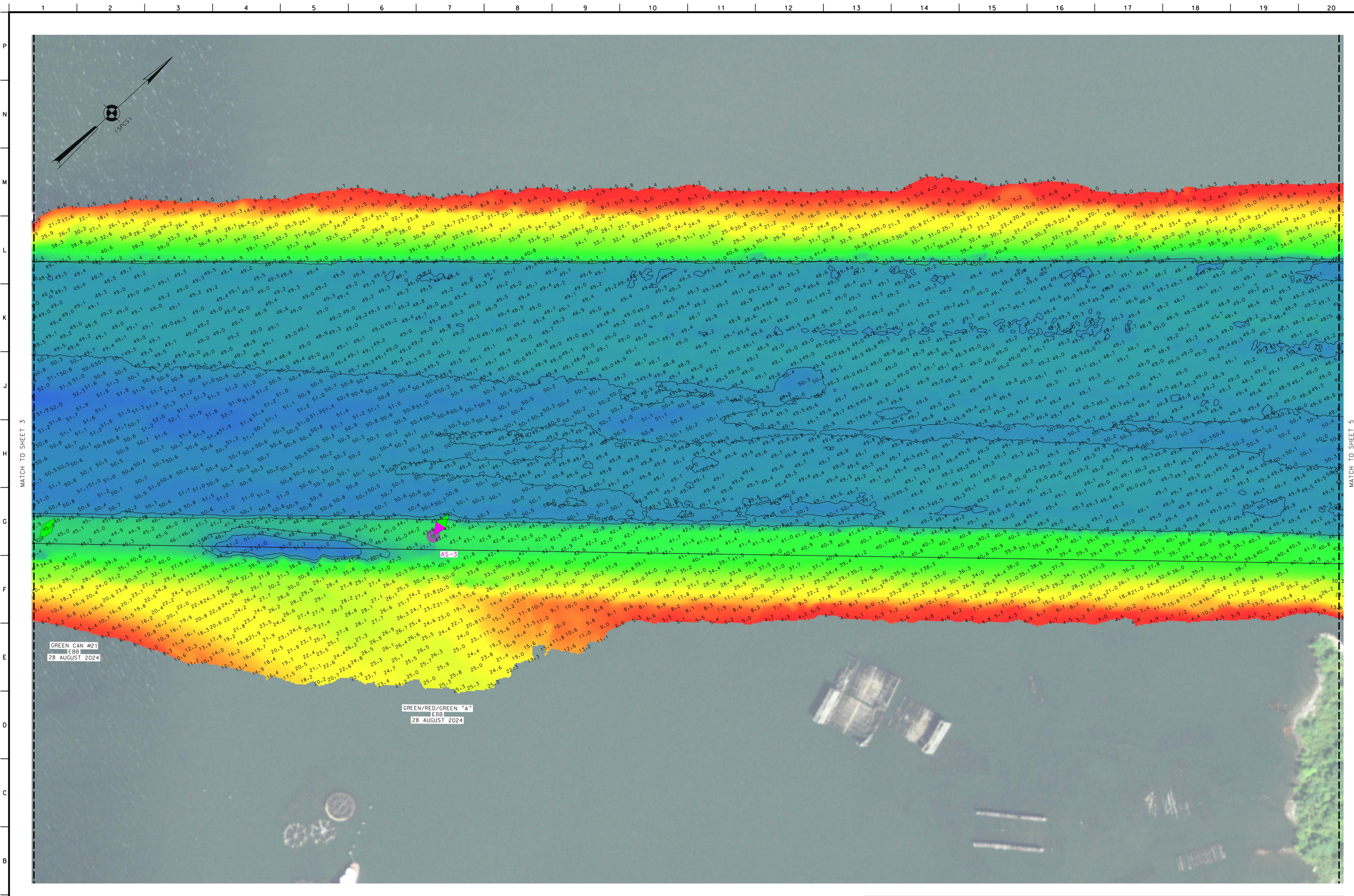
DEPARTMENT OF THE ARMY  
U.S. ARMY CORPS OF ENGINEERS  
NEW YORK DISTRICT  
NEW YORK, NEW YORK 10278

OPERATIONS DIVISION  
SURVEYS AND MAPPING BRANCH  
CENAN-OP-SS

NEW YORK AND NEW JERSEY CHANNELS  
ARTHUR KILL

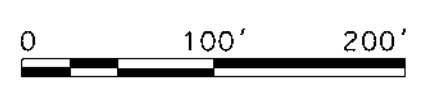
AFTER DREDGE SURVEY

VH-103  
3 OF 5



GREEN CAN #21  
EBB  
28 AUGUST 2024

GREEN/RED/GREEN "A"  
EBB  
28 AUGUST 2024



NSRS BENCHMARK	
BENCHMARK: R37 (PID: KV0234)	
ELEVATION: 32.45' (NAVD 1988)	

LOCAL CONTROL DATA	
BENCHMARK: RTK ELIZ PARK (COE PID: CM4261)	
ELEVATION: 13.77' (NAVD 1988)	

\* REFER TO SHEET VH-101 FOR PROJECT SPECIFIC NOTES



US ARMY CORPS OF ENGINEERS  
NEW YORK DISTRICT

PR	CM/JHS	SC
MP		

DATES OF SURVEY:  
29-30 AUGUST 2024  
3-5 SEPTEMBER 2024

SCALE:  
ONE INCH = 100 FEET

FIELD BOOKS:  
DINA 10

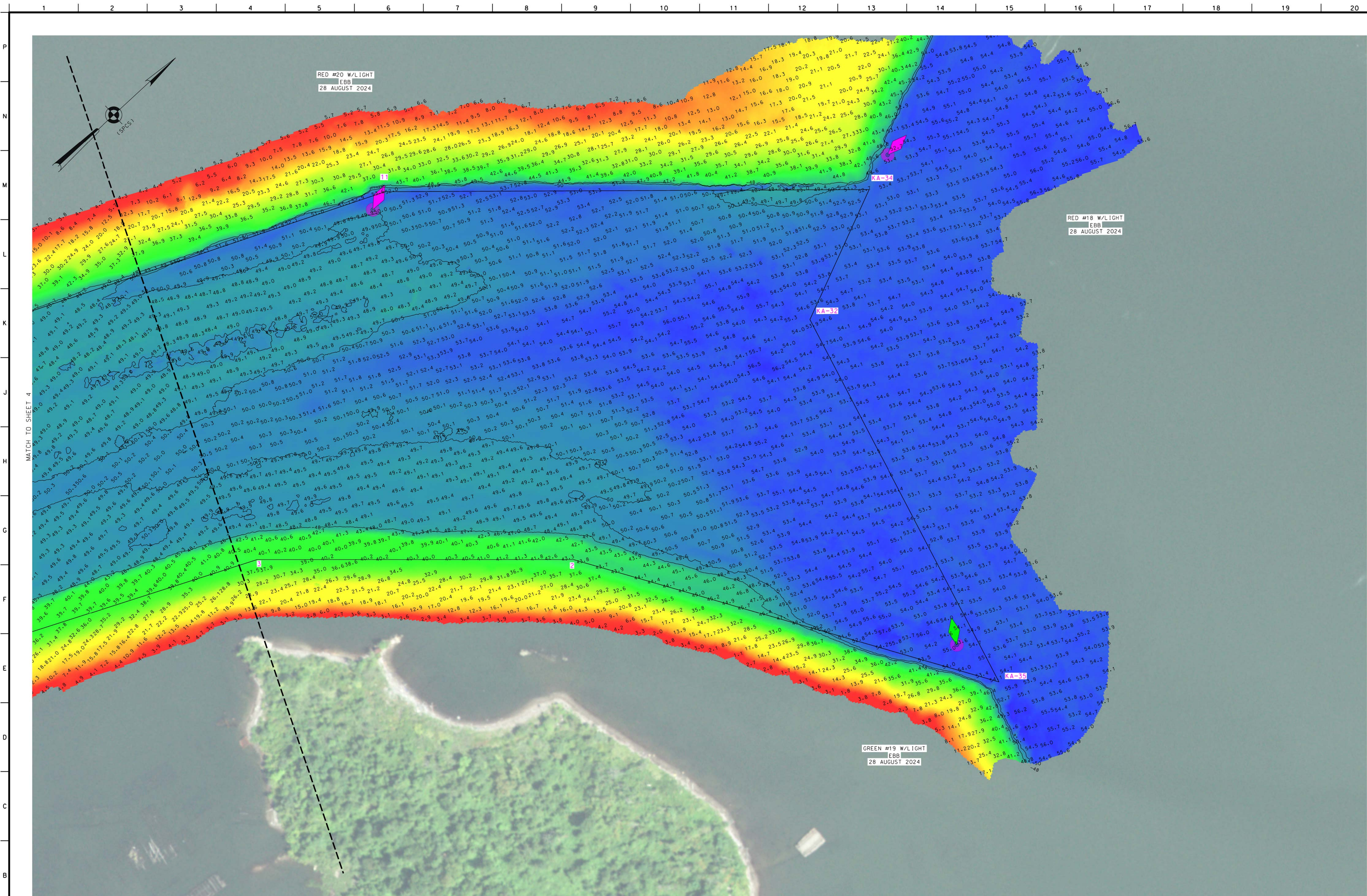
APPROVED: P. KEARNS FIELD CARTOGRAPHER  
APPROVED: M. FORTE CIVIL ENGINEERING TECHNICIAN  
APPROVED: P. BHADUR CHIEF OF SURVEY SUPPORT SECTION  
APPROVED: J. MRAZ DEPUTY CHIEF OF SURVEYS AND MAPPING BRANCH  
DATE: 5 SEPTEMBER 2024

DEPARTMENT OF THE ARMY  
U.S. ARMY CORPS OF ENGINEERS  
NEW YORK DISTRICT  
NEW YORK, NEW YORK 10278

OPERATIONS DIVISION  
SURVEYS AND MAPPING BRANCH  
CEMAN-OP-SS

NEW YORK AND NEW JERSEY CHANNELS  
ARTHUR KILL  
AFTER DREDGE SURVEY

VH-104  
4 OF 5



PR	CM/JHS	SC
MP		

DATES OF SURVEY:	29-30 AUGUST 2024 3 SEPTEMBER 2024
RED. NO./FILE NO.:	15485/D

SCALE:	ONE INCH = 100 FEET
FIELD BOOKS:	DINA 10

APPROVED:	P. KEARNS FIELD CARTOGRAPHER
APPROVED:	M. FORTE CIVIL ENGINEERING TECHNICIAN
APPROVED:	P. BALDUR CHIEF OF SURVEY SUPPORT SECTION
APPROVED:	J. MRAZ DEPUTY CHIEF OF SURVEYS AND MAPPING BRANCH
DATE:	5 SEPTEMBER 2024

DEPARTMENT OF THE ARMY
U.S. ARMY CORPS OF ENGINEERS
NEW YORK DISTRICT
NEW YORK, NEW YORK 10278
OPERATIONS DIVISION
SURVEYS AND MAPPING BRANCH
CENAN-OP-SS

NEW YORK AND NEW JERSEY CHANNELS  
ARTHUR KILL  
AFTER DREDGE SURVEY

NSRS BENCHMARK
BENCHMARK: R37 (PID: KVO234)
ELEVATION: 32.45' (NAVD 1988)

LOCAL CONTROL DATA
BENCHMARK: RTK EL12 PARK (CODE PID: CM4261)
ELEVATION: 13.77' (NAVD 1988)

\* REFER TO SHEET VH-101 FOR PROJECT SPECIFIC NOTES