

NSRS BENCHMARK	LOCAL CONTROL
BENCHMARK: SIMPSON 2 (PID:KV0709) ELEVATION: 6.92' (NAVD 1988)	BENCHMARK: SIMPSON 2 RM 3 (PID:KV0707) ELEVATION: 6.85' (NAVD 1988)

PROJECT SPECIFIC NOTES:

- THE INFORMATION DEPICTED ON THIS MAP REPRESENTS THE RESULTS OF SURVEYS MADE ON THE DATES INDICATED AND CAN ONLY BE CONSIDERED AS THE GENERAL CONDITIONS EXISTING AT THAT TIME.
- THE SOUNDINGS ON THIS MAP MEET EM 1110-2-1003 ACCURACY STANDARDS.
- THIS MAP IS CEPD COMPLIANT IN ACCORDANCE WITH ER 1110-2-8160 AND EM 1110-2-6056.
- COORDINATES REFER TO US STATE PLANE COORDINATE SYSTEM NAD 1983, NEW JERSEY MERCATOR - ZONE 2900, US SURVEY FEET.
- SOUNDINGS ON THIS MAP REFER TO THE PLANE OF MEAN LOWER LOW WATER (MLLW) [EPOCH 1983-2001].
- MEAN LOWER LOW WATER IS 2.9-3.0 FEET BELOW NAVD88 AS DETERMINED USING VDATUM (VER. 4-6-11).
- SOUNDINGS DEPICTED ON THIS MAP ARE BASED ON A 3' x 3' MEDIAN CELL, SORTED TO A 60' INTERVAL.
- CONTOURS ON THIS MAP WERE GENERATED USING THE 3 x 3 DATA SET.
- THE DATA DEPICTED ON THIS MAP SHOULD NOT BE USED FOR VOLUME CALCULATION PURPOSES.
- THIS SURVEY WAS PERFORMED USING REAL TIME KINEMATIC GPS FROM STATION "SIMPSON 2 RM 3".



US ARMY CORPS OF ENGINEERS  
NEW YORK DISTRICT

PR	SG-JHS
MP	JHS

DATE OF SURVEY:  
15-17,21,22 OCT 2024

REG. NO./FILE NO.: 15483/D/14

SCALE:  
ONE INCH = 2000 FEET

FIELD BOOKS:  
DNA 10

APPROVED: P. KEARNS FIELD CARTOGRAPHER

APPROVED: M. FORTE CIVIL ENGINEERING TECHNICIAN

APPROVED: P. BRADSHAW CHIEF OF SURVEY SUPPORT SECTION

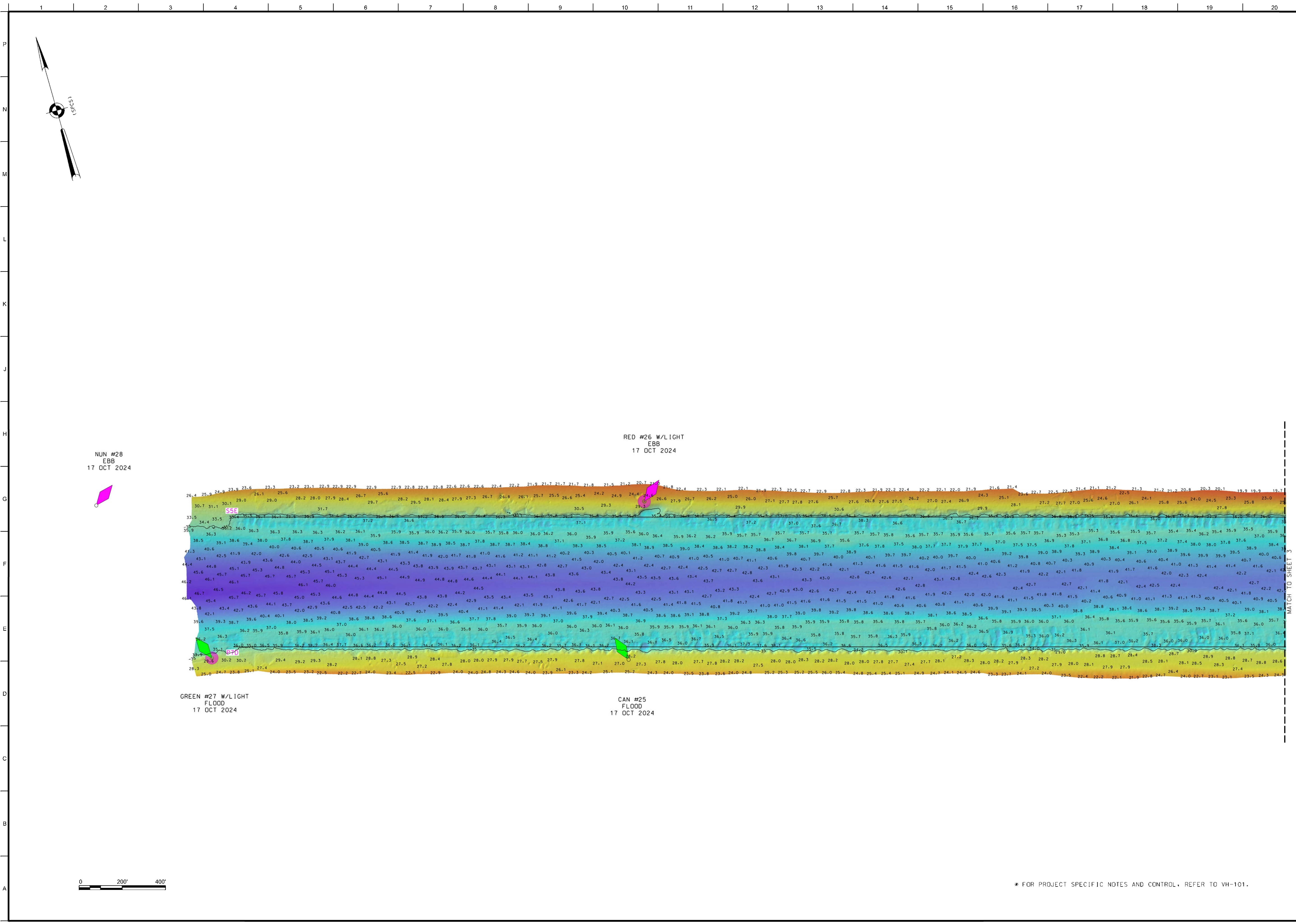
APPROVED: J. MRAZ DEPUTY CHIEF OF SURVEYS AND MAPPING BRANCH

DATE: 24 OCTOBER 2024

DEPARTMENT OF THE ARMY  
U.S. ARMY CORPS OF ENGINEERS  
NEW YORK DISTRICT  
NEW YORK, NEW YORK 10278

OPERATIONS DIVISION  
SURVEYS AND MAPPING BRANCH  
CENAN-OP-SS

NEW YORK AND NEW JERSEY CHANNELS  
RARITAN BAY REACHES  
AFTER DREDGE SURVEY



US ARMY CORPS  
OF ENGINEERS  
NEW YORK DISTRICT

	SC	JHS
	PR	JHS
	MP	

DATE OF SURVEY:  
15-17-21-22 OCT 2024

SCALE:  
ONE INCH = 200 FEET

FIELD BOOKS:  
DNA 10

RED. NO./FILE NO.: 15483/D/14

APPROVED: P. KEARNS FIELD CARTOGRAPHER

APPROVED: M. FORTE CIVIL ENGINEERING TECHNICIAN

APPROVED: P. BRADSHAW CHIEF OF SURVEY SUPPORT SECTION

APPROVED: J. MRAZ DEPUTY CHIEF OF SURVEYS AND MAPPING BRANCH

DATE: 24 OCTOBER 2024

DEPARTMENT OF THE ARMY  
U.S. ARMY CORPS OF ENGINEERS  
NEW YORK DISTRICT  
NEW YORK, NEW YORK 10278

OPERATIONS DIVISION  
SURVEYS AND MAPPING BRANCH  
CENAN-OP-SS

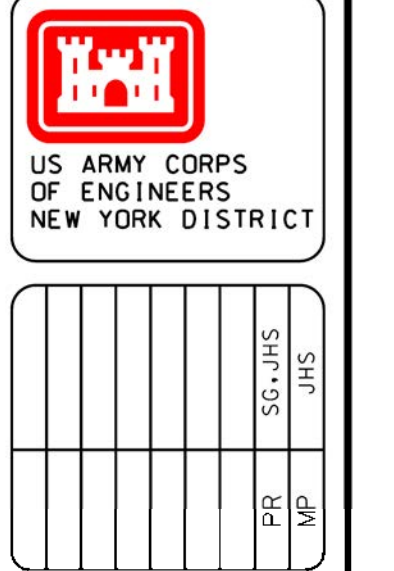
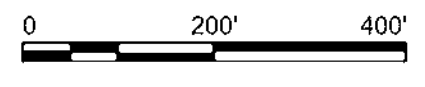
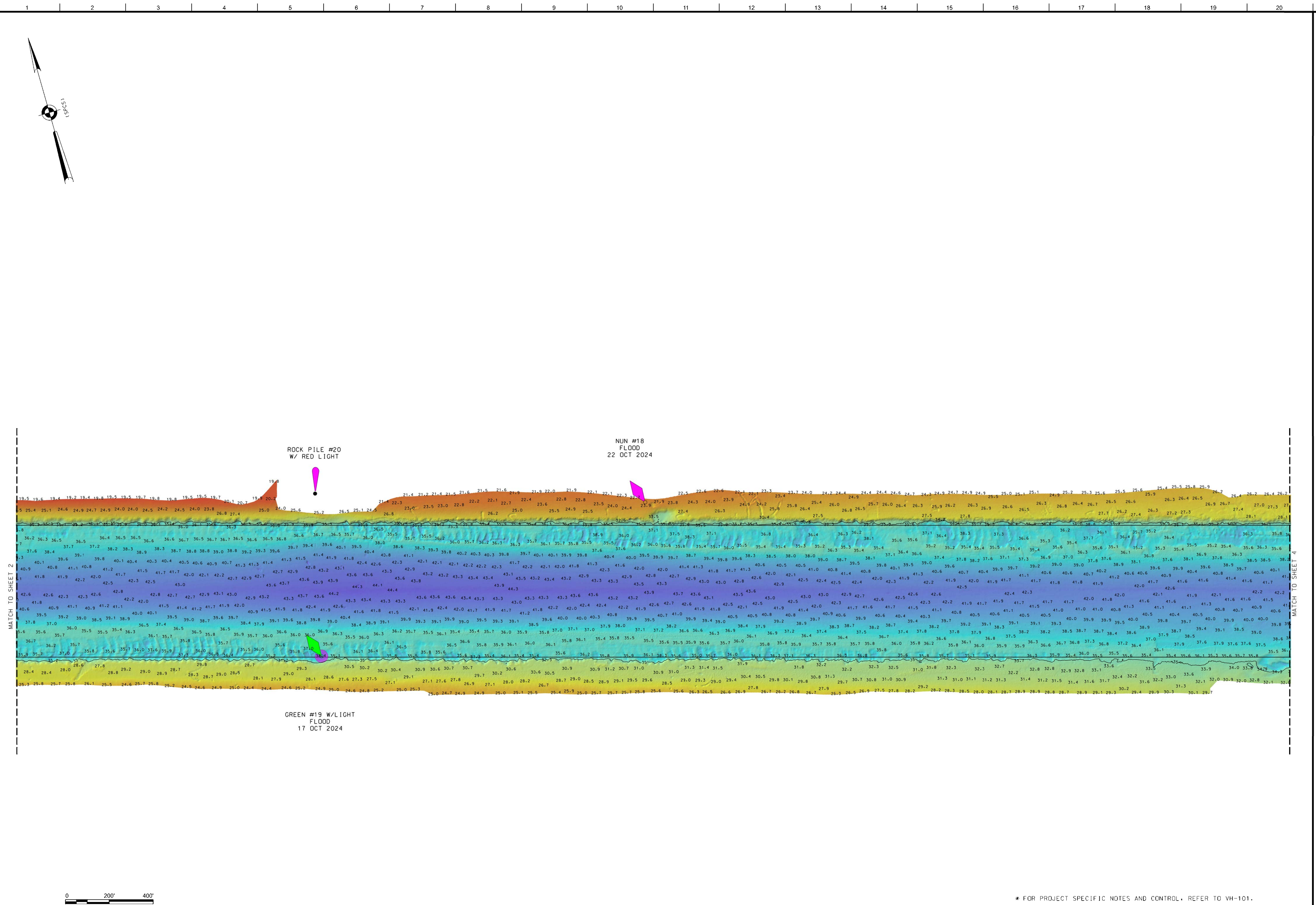
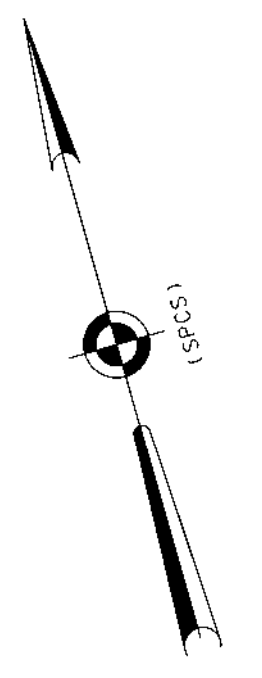
NEW YORK AND NEW JERSEY CHANNELS  
RARITAN BAY REACHES

AFTER DREDGE SURVEY

VH-102

2 OF 8

\* FOR PROJECT SPECIFIC NOTES AND CONTROL, REFER TO VH-101.



US ARMY CORPS OF ENGINEERS  
NEW YORK DISTRICT

PR: SC/JHS  
JHS

DATE: 24 OCTOBER 2024

SCALE: ONE INCH = 200 FEET  
FIELD BOOKS: DINA 10

APPROVED: P. KEARNS  
APPROVED: M. FORTE  
APPROVED: P. BRIDGES  
APPROVED: J. MRAZ

DEPARTMENT OF THE ARMY  
U.S. ARMY CORPS OF ENGINEERS  
NEW YORK DISTRICT  
NEW YORK - NEW YORK 10278

OPERATIONS DIVISION  
SURVEYS AND MAPPING BRANCH  
CEMAN-OP-55

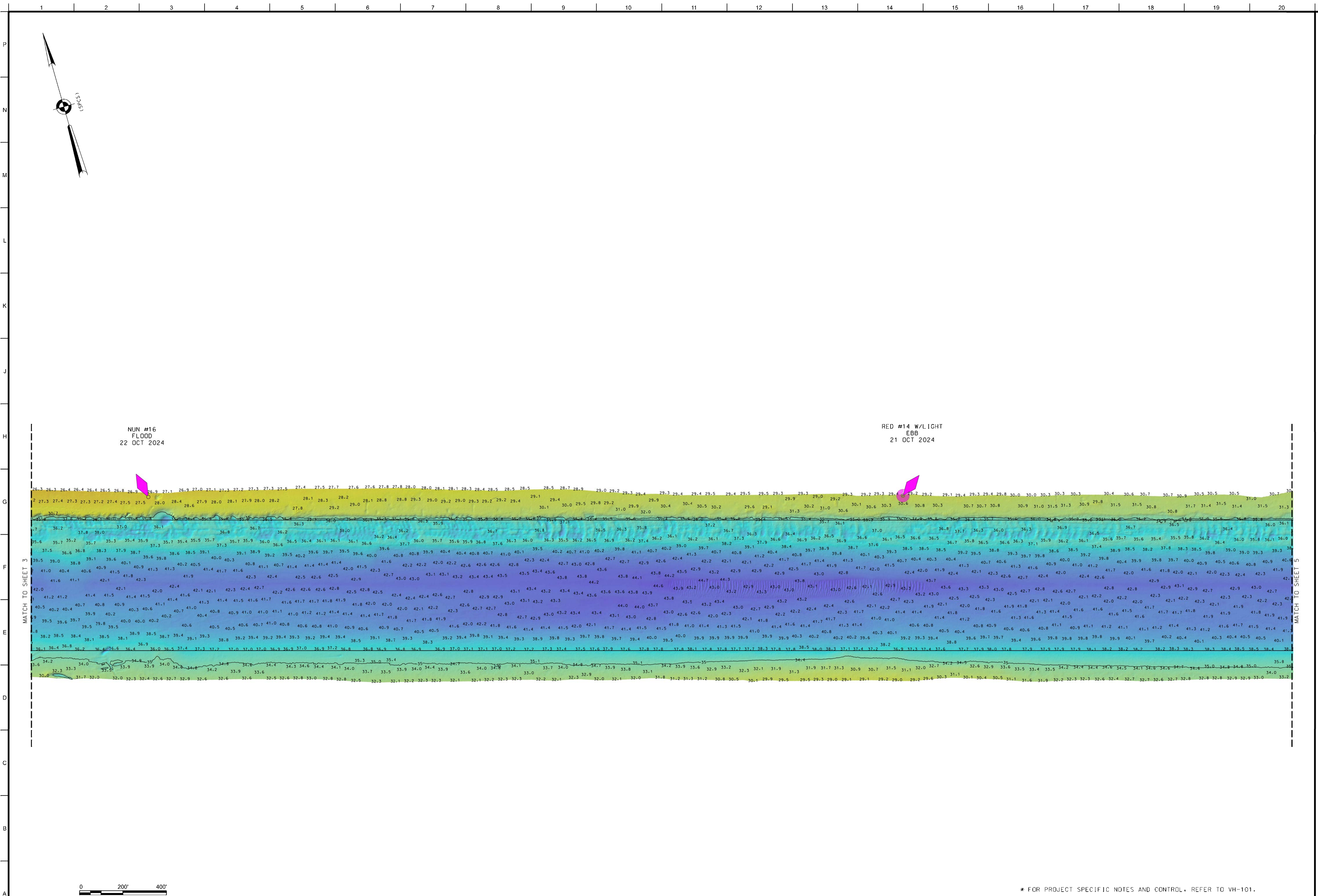
CHIEF OF SURVEYS AND MAPPING BRANCH

DEPUTY CHIEF OF SURVEYS AND MAPPING BRANCH

NEW YORK AND NEW JERSEY CHANNELS  
RARITAN BAY REACHES  
AFTER DREDGE SURVEY

VH-103  
3 OF 8

\* FOR PROJECT SPECIFIC NOTES AND CONTROL, REFER TO VH-101.



US ARMY CORPS  
OF ENGINEERS  
NEW YORK DISTRICT

		PR	SG/JHS
		MP	JHS

DATE OF SURVEY:  
15-17-21-22 OCT 2024

FIELD BOOKS:  
DNA 10

RED. NO./FILE NO.: 15495/0/14

SCALE:  
ONE INCH = 200 FEET

FIELD BOOKS:  
DNA 10

APPROVED: P. KEARNS FIELD CARTOGRAPHER  
APPROVED: M. FORTE CIVIL ENGINEERING TECHNICIAN  
APPROVED: P. BRADY CHIEF OF SURVEY SUPPORT SECTION  
APPROVED: J. MRAZ DEPUTY CHIEF OF SURVEYS AND MAPPING BRANCH

DATE: 24 OCTOBER 2024

DEPARTMENT OF THE ARMY  
U.S. ARMY CORPS OF ENGINEERS  
NEW YORK DISTRICT  
NEW YORK, NEW YORK 10278

OPERATIONS DIVISION  
SURVEYS AND MAPPING BRANCH  
CENAN-OP-SS

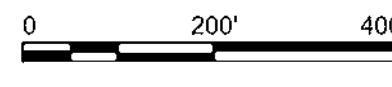
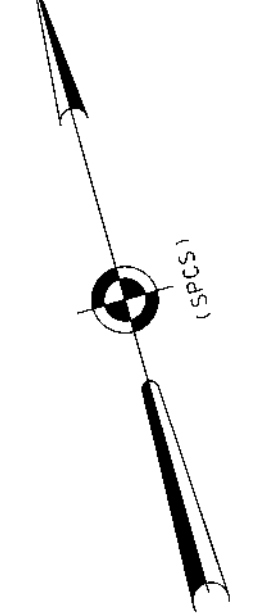
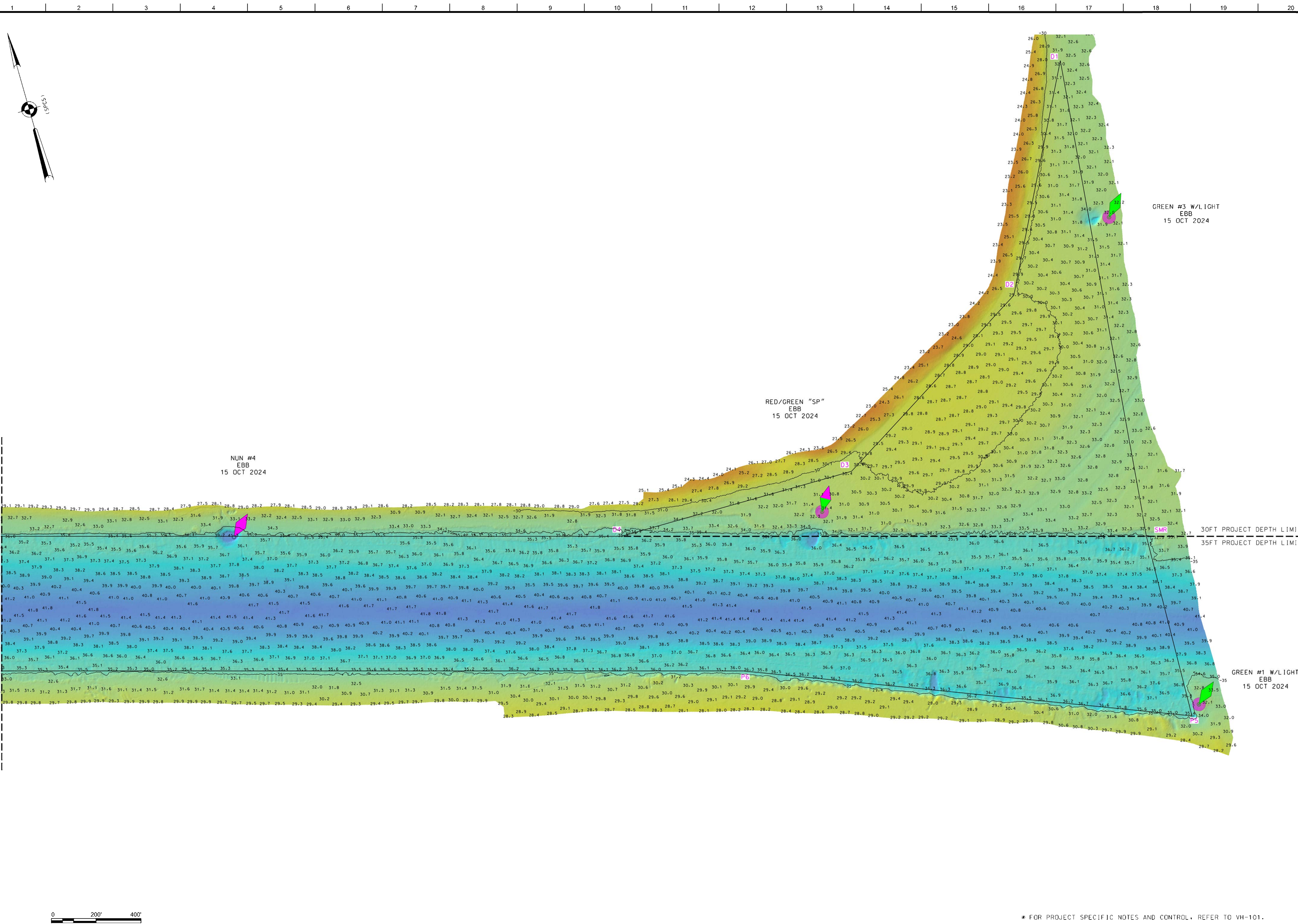
NEW YORK AND NEW JERSEY CHANNELS  
RARITAN BAY REACHES  
AFTER DREDGE SURVEY

\* FOR PROJECT SPECIFIC NOTES AND CONTROL, REFER TO VH-101.









US ARMY CORPS OF ENGINEERS  
NEW YORK DISTRICT

PR	SC/JHS
MP	

DATE OF SURVEY:  
15-17-21-22 OCT 2024

RED. NO./FILE NO.: 15483/D/14

SCALE:  
ONE INCH = 200 FEET

FIELD BOOKS:  
DNA 10

APPROVED: P. KEARNS FIELD CARTOGRAPHER

APPROVED: M. EBBE CIVIL ENGINEERING TECHNICIAN

APPROVED: P. BRADSHAW CHIEF OF SURVEY SUPPORT SECTION

APPROVED: J. MGAZ DEPUTY CHIEF OF SURVEYS AND MAPPING BRANCH

DATE: 24 OCTOBER 2024

DEPARTMENT OF THE ARMY  
U.S. ARMY CORPS OF ENGINEERS  
NEW YORK DISTRICT  
NEW YORK - NEW YORK 10278

OPERATIONS DIVISION  
SURVEYS AND MAPPING BRANCH  
CEMAN-OP-SS

NEW YORK AND NEW JERSEY CHANNELS  
RARITAN BAY REACHES

AFTER DREDGE SURVEY

VH-108

8 OF 8

\* FOR PROJECT SPECIFIC NOTES AND CONTROL, REFER TO VH-101.