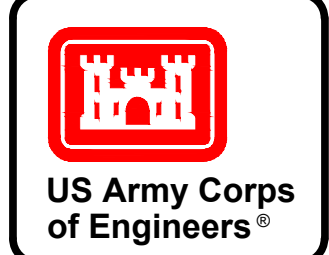


NSRS BENCHMARK	LOCAL CONTROL
BENCHMARK: R 37 (PID:KV0234) ELEVATION: 32.45' (NAVD 1988)	BENCHMARK: RTK ELIZ PARK ELEVATION: 13.69' (NAVD 1988)

PROJECT SPECIFIC NOTES:

- THE INFORMATION DEPICTED ON THIS MAP REPRESENTS THE RESULTS OF SURVEYS MADE ON THE DATES INDICATED AND CAN ONLY BE CONSIDERED AS THE GENERAL CONDITIONS EXISTING AT THAT TIME.
- THE SOUNDINGS ON THIS MAP MEET EM 1110-2-1003 ACCURACY STANDARDS.
- THIS MAP IS CEPD COMPLIANT IN ACCORDANCE WITH ER 1110-2-8160 AND EM 1110-2-6056.
- COORDINATES REFER TO US STATE PLANE COORDINATE SYSTEM NAD 1983, NEW JERSEY MERCATOR - ZONE 2900, US SURVEY FEET.
- SOUNDINGS ON THIS MAP REFER TO THE PLANE OF MEAN LOWER LOW WATER (MLLW) [EPOCH 1983-2001].
- MEAN LOWER LOW WATER IS 3.0 FEET BELOW NAVD88 AS DETERMINED USING VDATUM (VER. 4.6.1).
- SOUNDINGS DEPICTED ON THIS MAP ARE BASED ON A 3' x 3' MEDIAN CELL, SORTED TO A 30' INTERVAL.
- CONTOURS ON THIS MAP WERE GENERATED USING THE 3 x 3 DATA SET.
- THE DATA DEPICTED ON THIS MAP SHOULD NOT BE USED FOR VOLUME CALCULATION PURPOSES.
- AERIAL IMAGERY PROVIDED BY NOAA ORTHOIMAGERY 2022 AND IS FOR ORIENTATION PURPOSES ONLY.
- THIS SURVEY WAS PERFORMED USING REAL TIME KINEMATIC GPS FROM STATION "CAVEN POINT BASE".

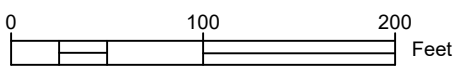
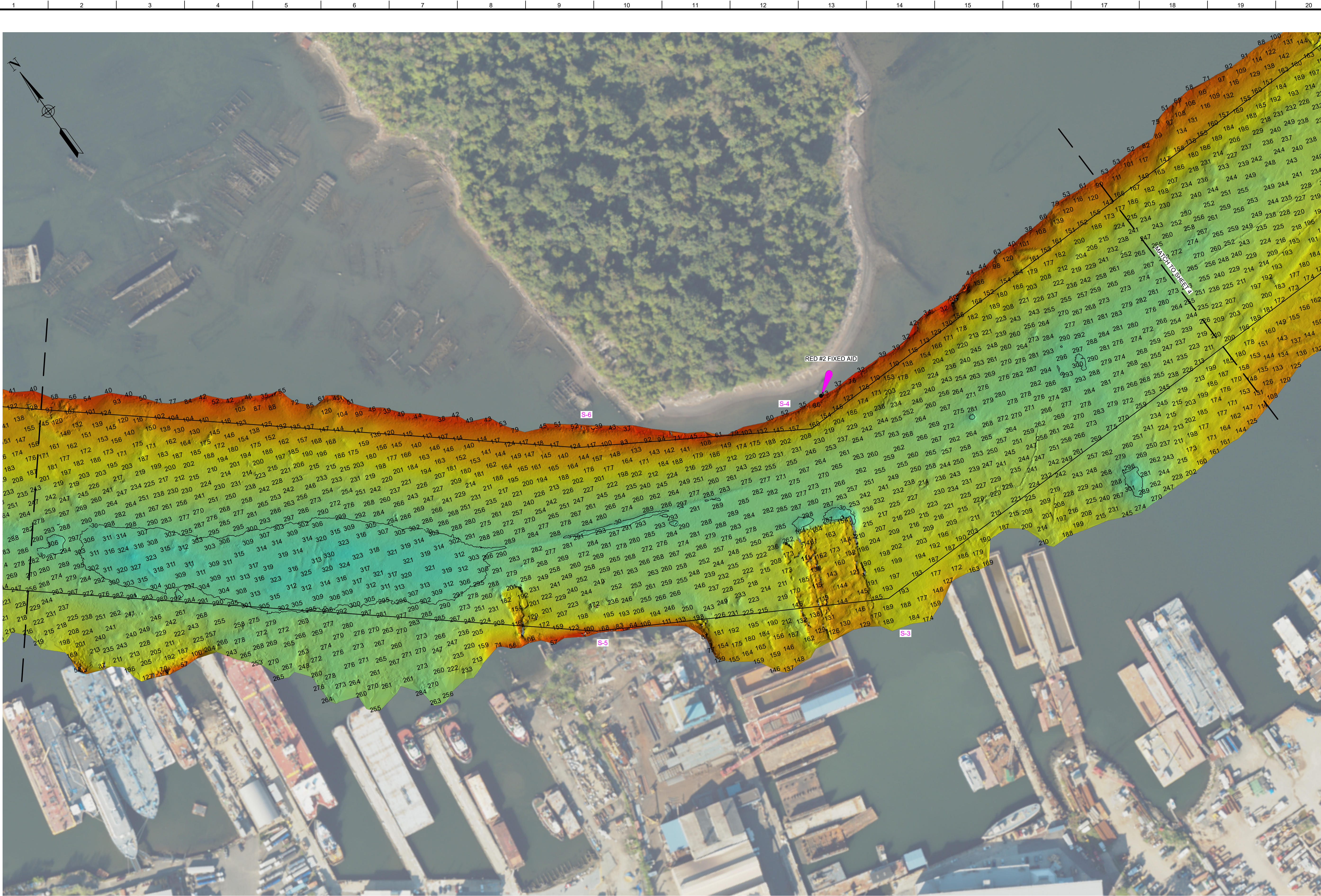


PR	EQ
MP	OWE

SCALE:	ONE INCH = 300 FEET
FIELD BOOKS:	N/A
DATES OF SURVEY:	03 MARCH 2026
REQUEST NUMBER:	5672IN2

APPROVED:	J. BERTOLOTI FIELD CARTOGRAPHER	U.S. ARMY CORPS OF ENGINEERS NEW YORK DISTRICT NEW YORK, NEW YORK 10278
APPROVED:	B. USAD US ARMY CARTOGRAPHER	OPERATIONS DIVISION SURVEYS AND MAPPING BRANCH CENAN-OP-SS
APPROVED:	P. BHADUR CHIEF OF SURVEY SUPPORT SECTION	
APPROVED:	J. MRAZ CHIEF OF SURVEYS AND MAPPING BRANCH	
ISSUE DATE:	18 MARCH 2026	

**NEW YORK & NEW JERSEY CHANNELS
CHANNEL SOUTH OF SHOOTERS ISLAND
CONDITION SURVEY**



*FOR PROJECT SPECIFIC NOTES AND CONTROL, REFER TO SHEET VH-101.



	PR	EO
	MP	OWF

DATE OF SURVEY:	03 MARCH 2026
SCALE:	ONE INCH = 100 FEET
FIELD BOOKS:	N/A
REQUEST NUMBER:	5672/N2

APPROVED:	J. BERTOLOTTI TOPOGRAPHER
APPROVED:	B. HIGGINS LEGISLATOR
APPROVED:	P. BHADUR CHIEF OF SURVEY SUPPORT SECTION
APPROVED:	J. MRAZ CHIEF OF SURVEYS AND MAPPING BRANCH
ISSUE DATE:	18 MARCH 2026

U.S. ARMY CORPS OF ENGINEERS
NEW YORK DISTRICT
NEW YORK, NEW YORK 10278

OPERATIONS DIVISION
SURVEYS AND MAPPING BRANCH
CENAN-OP-SS

**NEW YORK & NEW JERSEY CHANNELS
CHANNEL SOUTH OF SHOOTERS ISLAND**

CONDITION SURVEY

