



BENEFICIAL USE OF DREDGED MATERIAL FROM HARBOR DEEPENING



Brownfield Remediation



Bayonne Landfill: 4MCY
(+ many other landfills & Brownfields remediated)

Lincoln Park: 339,000 CY
(remediated)



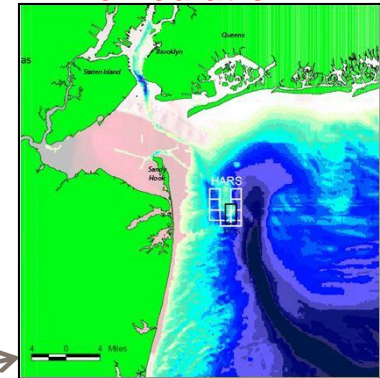
: ~11 MCY rock

Beach Nourishment/Shoreline Stabilization



Plumb Beach: 155,000 CY

Remediation



Capping HARS (+O&M): ~56 MCY



Capping NBCDF: 235,000 CY

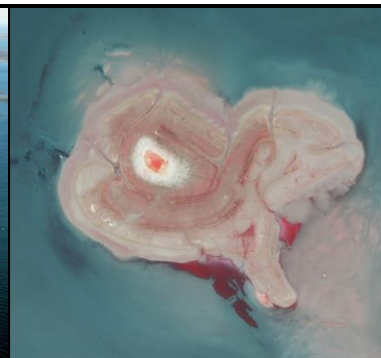


Harbor Deepening Project:
~50 M CY

Ecosystem Restoration: Jamaica Bay Marsh Islands



Elders East: 249,000 CY
40 acres



Elders West: 302,000 CY
40 acres



Yellow Bar: 375,000 CY
47 acres



Black Wall: 155,000 CY
20 acres



Rulers Bar: 92,000 CY
10 acres

Actions Achieving the Vision of a World Class Harbor Estuary

Navigation/Port

Harbor Deepening (50-ft) and O&M Dredging
Drift/Floatables Removal
Beneficial use of Dredged Material
Harbor Operations

NY/NJ Harbor Deepening Channel
Improvement Study
Anchorage Study

Environment

Restoration Program:
Hudson Raritan Estuary
Hudson River
Liberty State Park (NJDEP)

Spring Creek
Old Place Creek
Jamaica Bay Islands
Environmental Remediation (EPA)

NY/NJ Harbor and Tributaries Study
Rockaways
Port Monmouth/Union Beach
Emergency Operations
Passaic River Tidal
South Shore of Staten Island
Minish Park
Rahway Tidal

Safety/Security

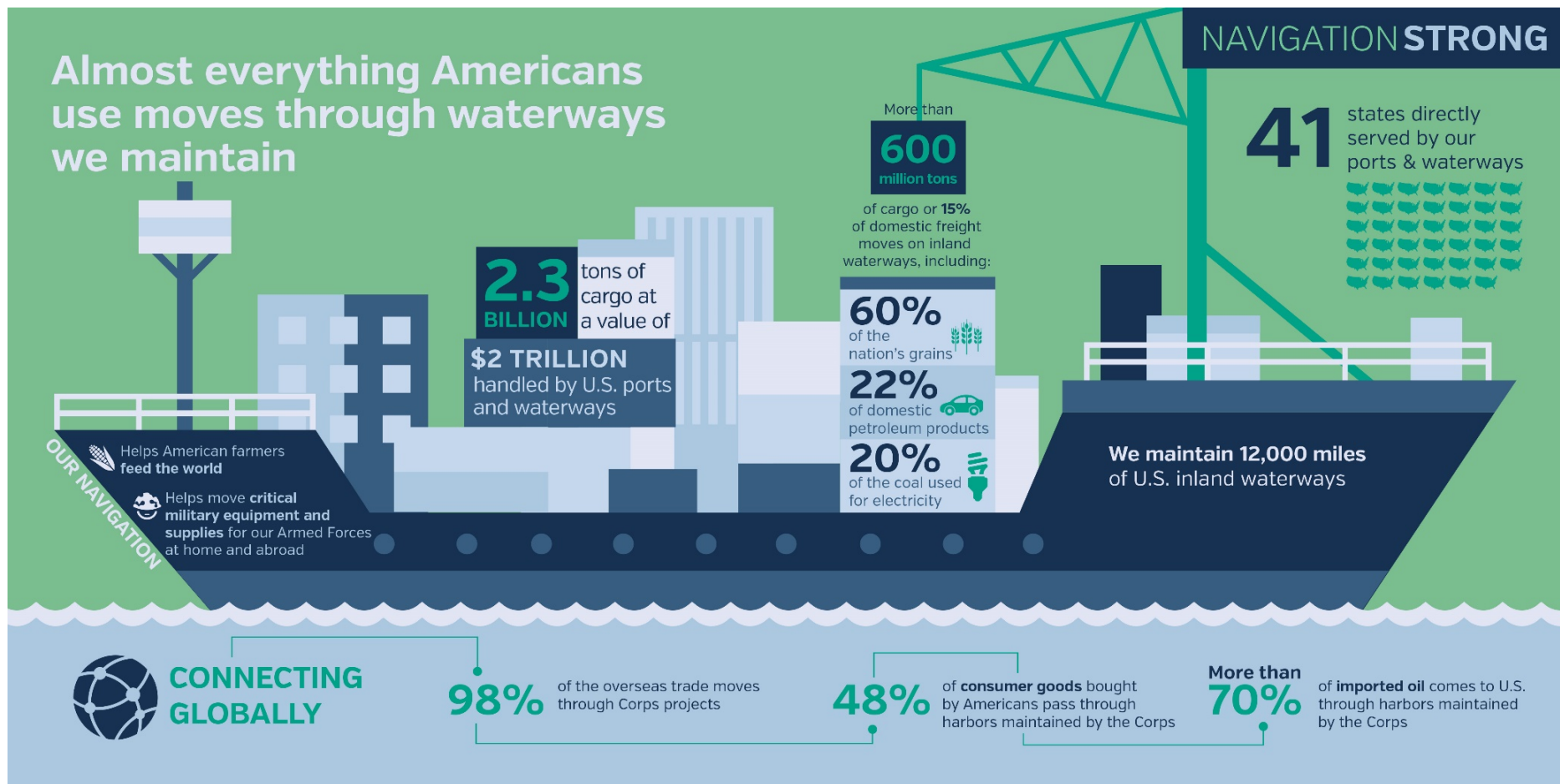
the
WATERS
we
SHARE





US Army Corps
of Engineers®
New York District

Army Corps Maintains Federal Navigation Waterways





US Army Corps
of Engineers®
New York District

Army Corps The Nation's Environmental Engineers

ENVIRONMENT STRONG

We are the nation's environmental engineer

More than
4K engineers and scientists
working in environmental
arena



Environmental
Stewardship & Restoration
12 million acres
of wildlife habitat (the size of
New Hampshire & Vermont combined)
in **43 states**

LEADING THE WAY

Helps lead federal efforts
to shrink the government's
energy footprint and **decrease**
demand on natural resources

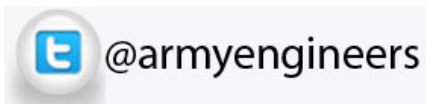
by **2025**
we expect to **remove**
the equivalent of

25K

cars from the road each
year through our
sustainable efforts

CLEANING YOUR COMMUNITY

Working in **all 50 states**,
cleaning yards, parks,
schools and business sites



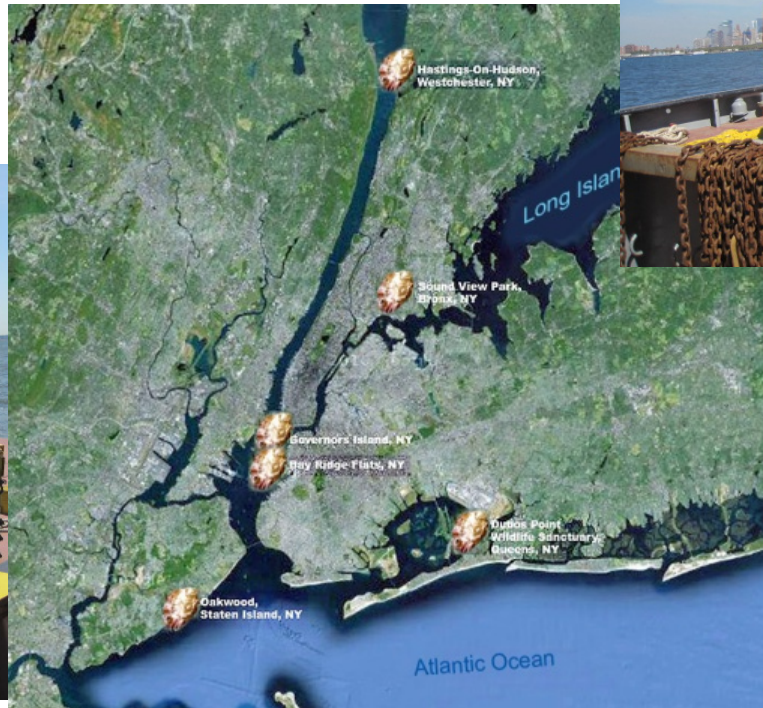
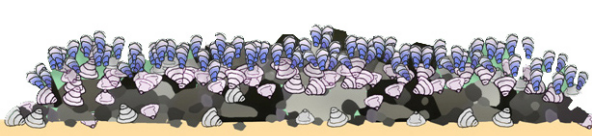
www.nan.usace.army.mil



US Army Corps
of Engineers®
New York District

Oyster Restoration

The Army Corps NY District,
Port Authority of New York &
New Jersey
and Partners Ecosystem
Restoration Feasibility Study
placement of rubble and shell
to create the base of the pilot
reef.





US Army Corps
of Engineers®
New York District

Liberty State Park Before

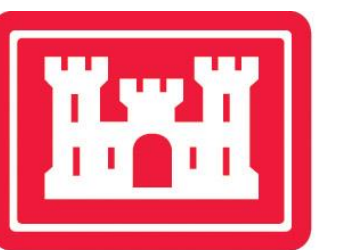


Liberty State Park After





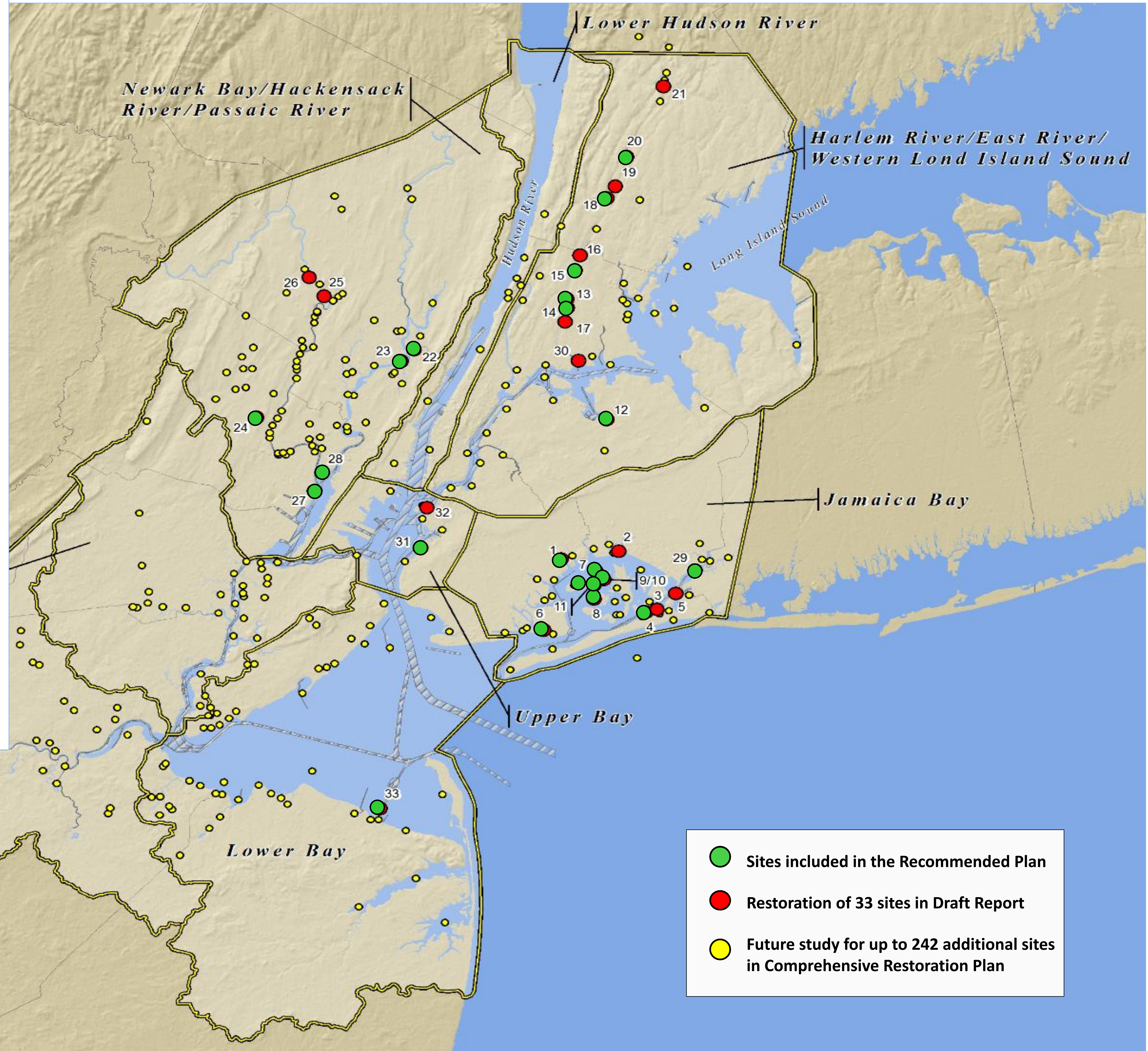
Hudson Raritan Estuary Ecosystem Restoration Recommended Plan



US Army Corps
of Engineers®
New York District

Feasibility Restoration Sites

1. Fresh Creek
2. Hawtree Point
3. Dubos Point
4. Brant Point
5. Bayswater State Park
6. Dead Horse Bay (Tier 2 Site)
7. Elders Center Marsh Island
8. Duck Point Marsh Island
9. Pumpkin Patch- East Marsh Island
10. Pumpkin Patch- West Marsh Island
11. Stony Point Marsh Island
12. Flushing Creek
13. Stone Mill Dam
14. Bronx Zoo and Dam
15. Shoelace Park
16. Muskrat Cove
17. River Park/West Farm Rapids Park
18. Bronxville Lake
19. Crestwood Lake
20. Garth Woods/Harney Road
21. Westchester County Center
22. Meadowlark Tract
23. Metromedia Marsh
24. Essex County Branch Brook Park
25. Dundee Island Park
26. Clifton Dundee Canal Green Acres
27. Oak Island Yards (Tier 2 Site)
28. Kearny Point (Tier 2 Site)
29. Jamaica Bay – Head of Bay
30. Soundview Park
31. Bush Terminal
32. Governor's Island
33. Naval Weapons Station Earle



- Sites included in the Recommended Plan
- Restoration of 33 sites in Draft Report
- Future study for up to 242 additional sites in Comprehensive Restoration Plan

JAMAICA BAY MARSH ISLAND RESTORATION



- >2000 acres of Marsh Islands have been lost since 1924
- Restored 160 acres

★ HRE Recommendation of 170 acres

