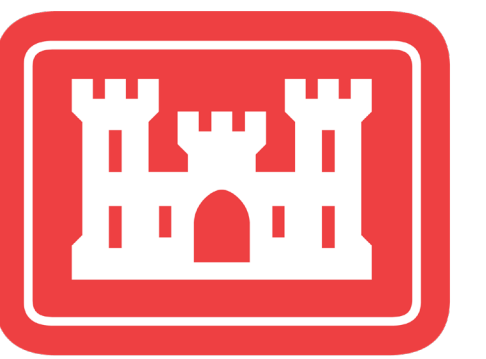




# NEW YORK-NEW JERSEY HARBOR AND TRIBUTARIES Coastal Storm Risk Management Study Environmental Justice



**US Army Corps  
of Engineers®**  
New York District

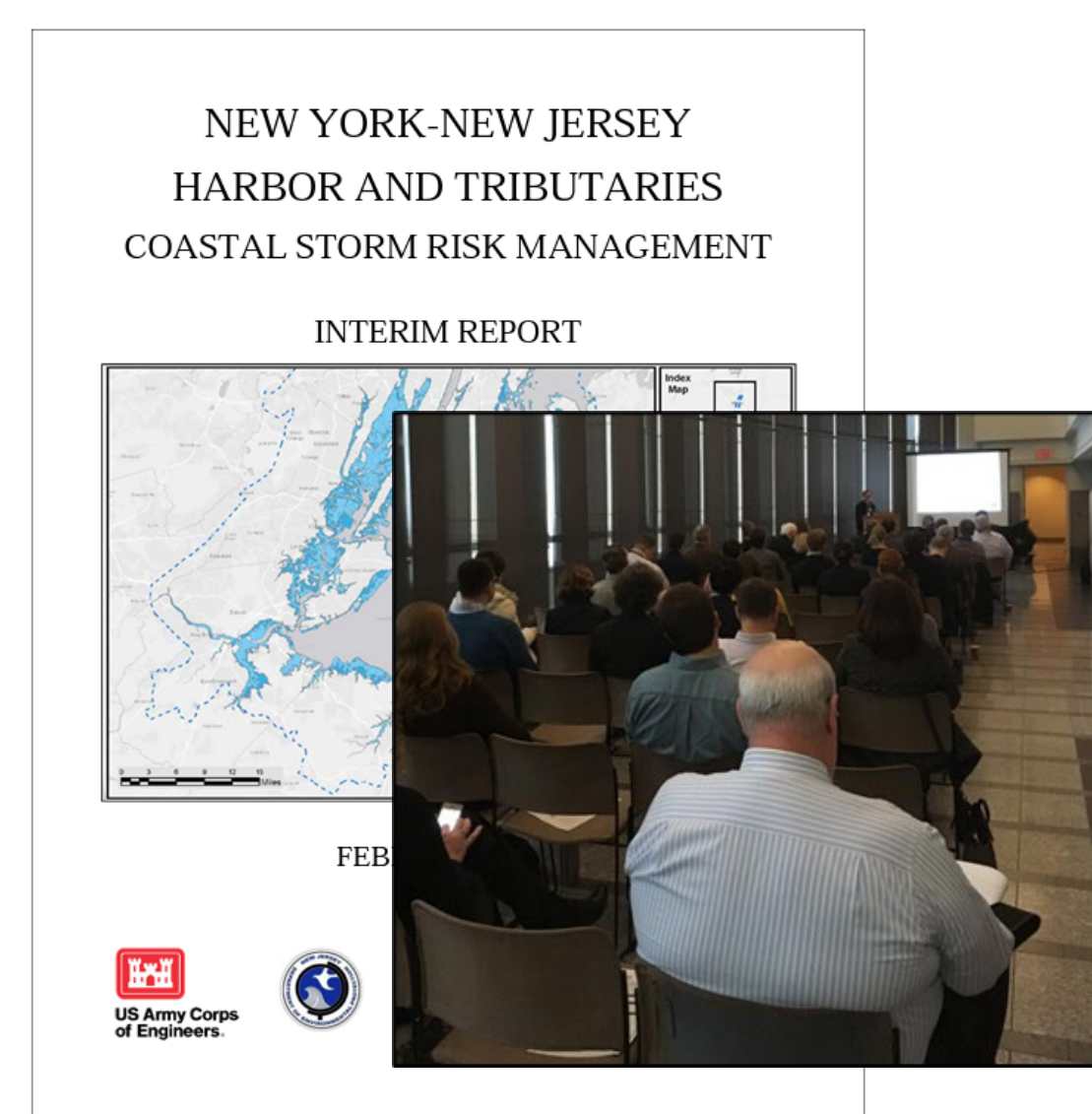
## What is Environmental Justice?

The fair treatment and meaningful involvement of all people regardless of race, color, national origin or income regarding the development, implementation and enforcement of environmental laws, regulations, and policies, with no group bearing a disproportionate burden of environmental harms and risks.

## What is the Justice 40 Initiative?

Executive Order 14008 directs all Federal agencies with covered programs, including the U.S. Army Corps of Engineers, to take steps to ensure environmental justice and economic opportunity for disadvantaged communities that have been historically marginalized and overburdened by pollution and underinvestment in housing, transportation, water and wastewater infrastructure, and health care.

## Increasing Access for Disadvantaged Communities to Benefits Provided by U.S. Army Corps of Engineers



### Utilizing Every Tool in Our Toolbox:

- ♀ Robust Public Engagement Throughout the Study Process:
- ♀ 9 Public Scoping Meetings in 2018
- ♀ 18 Public Meetings Following Release of the Interim Report in 2019
- ♀ Over 10,000 written comments received to date
- ♀ Ongoing Collaboration with Interest Groups, Academic Institutions, and Community Boards

## Removing Barriers to Participation in Decision-Making:

- ♀ Weekend, Daytime and Evening Public Meetings
- ♀ 150-day Public Comment Period (Extended from 90 days) for the Draft Report, ends March 7, 2023
- ♀ Project Story Map
- ♀ Public Meetings Located throughout the Study Area at Easily Accessible Locations
- ♀ Translation Services and ASL Interpretation
- ♀ Recorded Presentation with Translation
- ♀ Leveraging Existing Relationships and Establishing New with Local Community Leaders and Interest Groups to “Get the Word Out!”

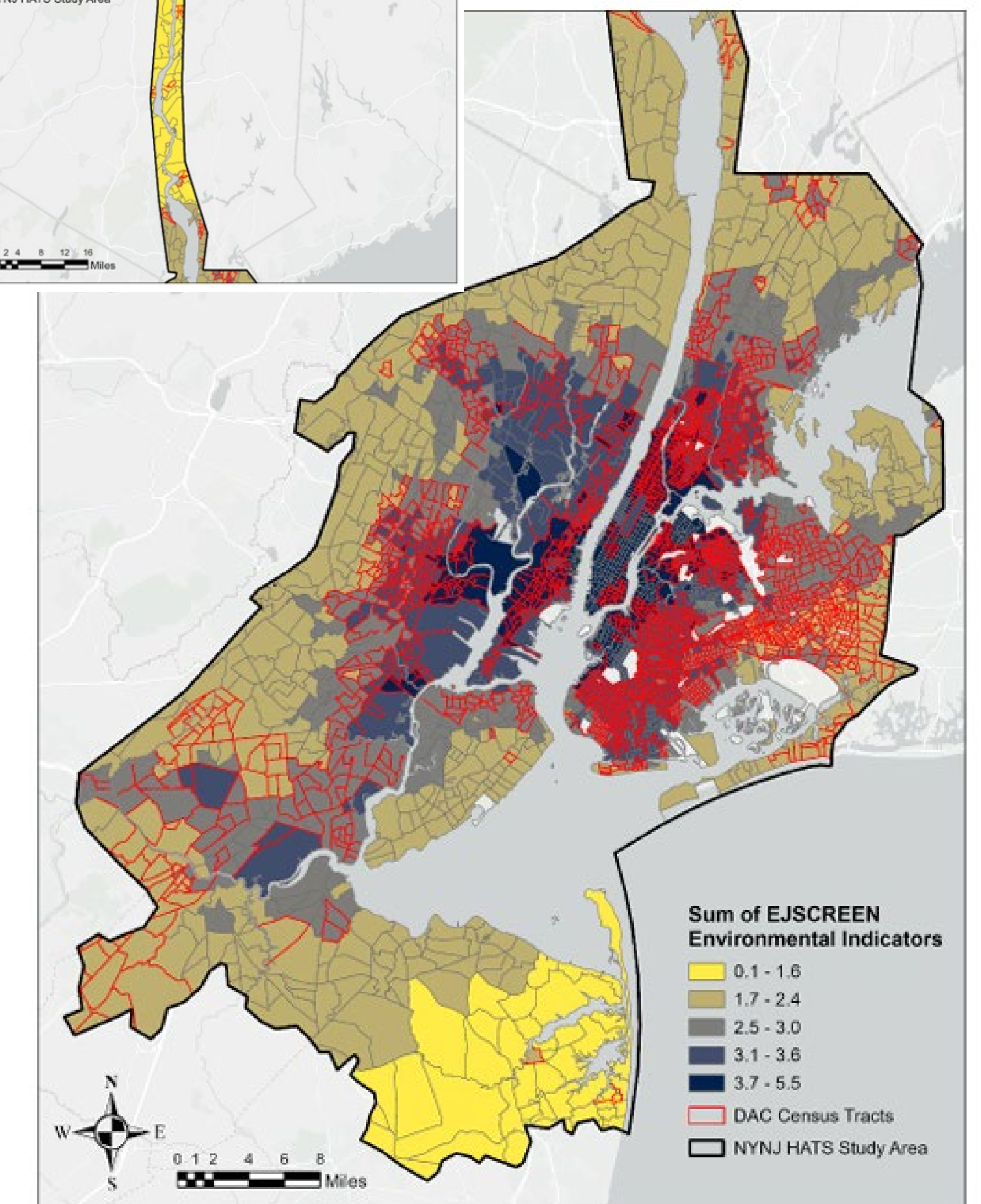
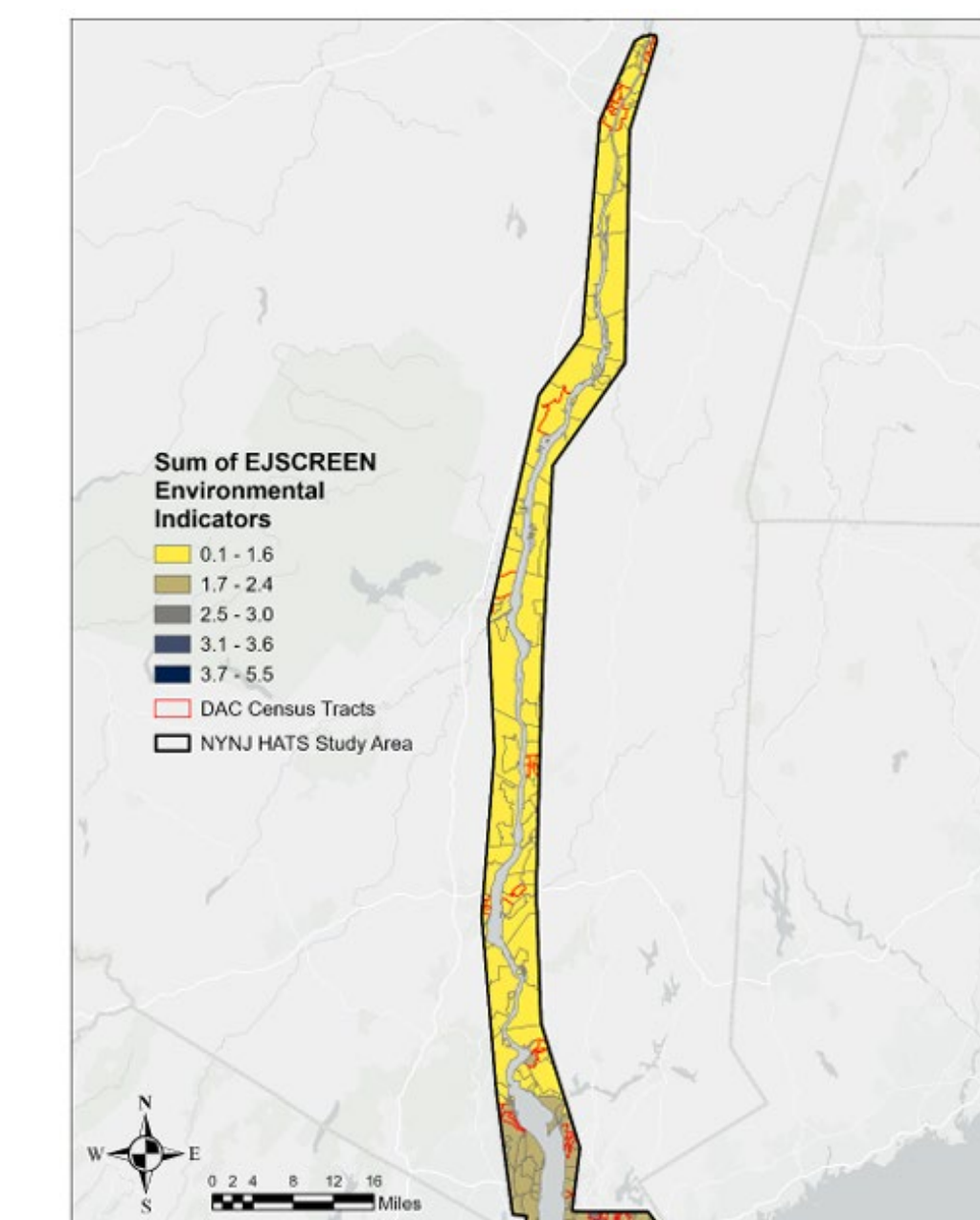
## Tier 1 EIS - Other Social Effects /Environmental Justice Analysis

- ♀ Census Tracts meeting criteria for Disadvantaged Communities (DAC) based on percent low-income and percent minority
- ♀ Environmental Indicators taken from EPA’s EJSCREEN were then layered with DAC Tracts for a more complete picture
- ♀ Combination of EJ with other social effects measured potential positive and negative effects of project alternatives
- ♀ For each Alternative analyzed, the benefits of coastal storm risk reduction outweigh potential adverse effects but there is more work to be done.... we want to hear from you!

Factors	Metrics	Criteria
Physical and Mental Health and Safety	Safety	Residents of Risk-Reduced Areas
		Access to Healthcare
	Health	Population with Physical Vulnerabilities in Risk-Reduced Areas
Economic Vitality	Business Climate	Point Sources of Contamination in Risk-Reduced Areas
		Business Buildings in Risk-Reduced Areas
Social Connectedness	Community Facilities	Community Buildings in Risk-Reduced Areas
		Community Monuments in Risk-Reduced Areas

Social Vulnerability and Resilience	Socially Vulnerable Groups	Intersection of Barrier with Environmental Justice Communities
		Environmental Justice Communities in Risk-Reduced Areas
		Socially Vulnerable Groups in Risk-Reduced Areas
		Life Expectancy for Residents in Risk-Reduced Areas
Participation	Public Participation	Reflection of Community Priorities
Leisure and Recreation	Recreational Activities	Change in Outdoor Recreation/Leisure/Nature Space

**Disadvantaged Communities (DAC) make up more than half of the study area.**



## How Can You Help Inform the Study?

- ♀ If there is a localized concern regarding the plan that might impact a disadvantaged portion of your community, we want to know!
- ♀ Comments Please! Send comments with subject line EJ to [nynjharbor.tribstudy@usace.army.mil](mailto:nynjharbor.tribstudy@usace.army.mil)
- ♀ Use the QR Code below to review the report, get details about upcoming meetings, and navigate to the Story Map.
- ♀ Let us know how we are doing; how can we reach more underserved people in your community?

## Learn More About EJ and Your Community:

- ♀ EPA’s EJ Screen
- ♀ CEQ’s Climate and Environmental Justice Screening Tool
- ♀ New York State’s Office of Environmental Justice
- ♀ New Jersey’s EJ Mapping Tool
- ♀ Follow the QR Code for the NYNJHATS Website and the read the Report

