



SHEET 3

SHEET 4

PROJECT SPECIFIC NOTES:

- THE INFORMATION DEPICTED ON THIS MAP REPRESENTS THE RESULTS OF SURVEYS MADE ON THE DATES INDICATED AND CAN ONLY BE CONSIDERED AS THE GENERAL CONDITIONS EXISTING AT THAT TIME.
- THE SOUNDINGS ON THIS MAP MEET EM 1110-2-1003 ACCURACY STANDARDS.
- THIS MAP IS CEPD COMPLIANT IN ACCORDANCE WITH ER 1110-2-8160 AND EM 1110-2-6056.
- COORDINATES REFER TO US STATE PLANE COORDINATE SYSTEM NAD 1983, LONG ISLAND LAMBERT - ZONE 3104, US SURVEY FEET.
- SOUNDINGS ON THIS MAP REFER TO THE PLANE OF MEAN LOWER LOW WATER (MLLW) [EPOCH 1983-2001].
- MEAN LOWER LOW WATER IS 2.6-2.7 FEET BELOW NAVD88 AS DETERMINED USING VDUMAT (VER. 4.3).
- SOUNDINGS DEPICTED ON THIS MAP ARE BASED ON A 5' x 5' AVG CELL, SORTED TO A 45° INTERVAL.
- CONTENTS ON THE MAP WERE GENERATED USING THE 5' x 5' DATA SET.
- THE DATA DEPICTED ON THIS MAP SHOULD NOT BE USED FOR VOLUME CALCULATION PURPOSES.
- AERIAL IMAGERY PROVIDED BY NYGIS 2020
- AND IS FOR ORIENTATION PURPOSES ONLY.
- THIS SURVEY WAS PERFORMED USING REAL TIME KINEMATIC GPS FROM STATION "SHORT BEACH CG FLAGPOLE".

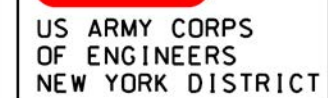


LOCAL CONTROL DATA

BENCHMARK: SHORT BEACH CG FLAGPOLE (KU3161)
ELEVATION: 9.70' (NAVD 1988)

NSRS BENCHMARK

BENCHMARK: 12E 02N (KU4917)
ELEVATION: 9.91' (NAVD 1988)

[illegible]

DATES OF SURVEY:
APRIL 11-13, 2023

SCALE:
ONE INCH = 800 FEET

REQ. NO./FILE NO.:XX

APPROVED:	D. MOORE	FIELD CARTOGRAPHER
APPROVED:	M. FORTE	CIVIL ENGINEERING TECHNICIAN
APPROVED:	P. BHADUR	LEAD CARTOGRAPHER
APPROVED:	J. MRJAZ	DEPUTY CHIEF OF SURVEY
DATE:	APRIL 24, 2003	

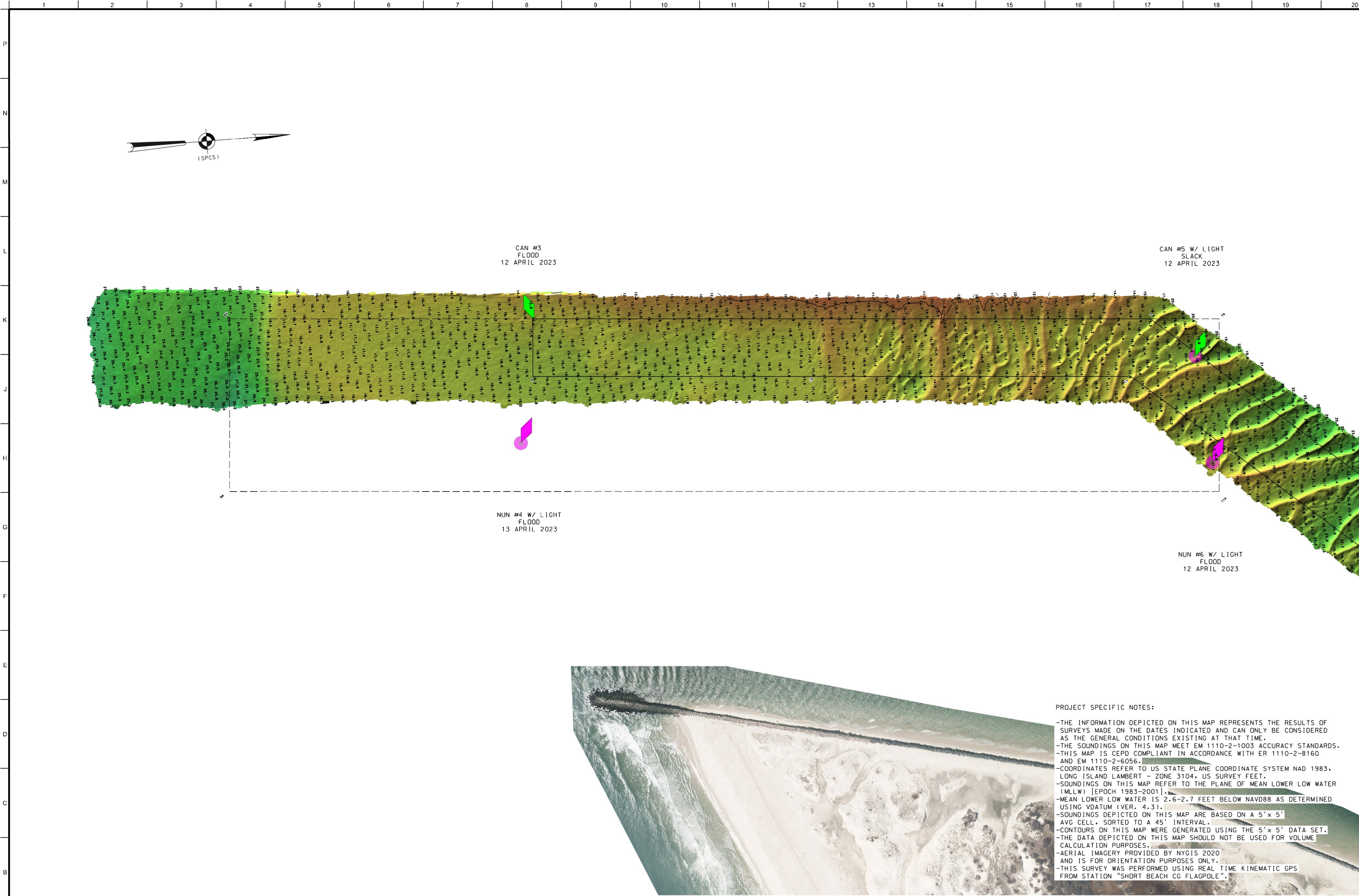
DEPARTMENT OF THE ARMY
U.S. ARMY CORPS OF ENGINEERS
NEW YORK DISTRICT
NEW YORK, NEW YORK 10278

OPERATIONS DIVISION
SURVEY SECTION
CENAN-OP-SS

JONES INLET
LONG ISLAND, NEW YORK
CONDITION SURVEY

VH-101

1 OF 4



PROJECT SPECIFIC NOTES:

- THE INFORMATION DEPICTED ON THIS MAP REPRESENTS THE RESULTS OF SURVEYS MADE ON THE DATES INDICATED AND CAN ONLY BE CONSIDERED AS THE GENERAL CONDITIONS EXISTING AT THAT TIME.
- THE SOUNDINGS ON THIS MAP MEET EM 1110-2-1003 ACCURACY STANDARDS.
- THIS MAP IS CEPD COMPLIANT IN ACCORDANCE WITH ER 1110-2-8160 AND EM 1110-2-6056.
- COORDINATES REFER TO US STATE PLANE COORDINATE SYSTEM NAD 1983, LONG ISLAND LAMBERT - ZONE 3104, US SURVEY FEET.
- SOUNDINGS ON THIS MAP REFER TO THE PLANE OF MEAN LOWER LOW WATER (MLLW) [EPOCH 1983-2001].
- MEAN LOWER LOW WATER IS 2.6-2.7 FEET BELOW NAVD88 AS DETERMINED USING VDATUM (VER. 4.3).
- SOUNDINGS DEPICTED ON THIS MAP ARE BASED ON A 5'x 5' AVG CELL, SORTED TO A 45' INTERVAL.
- CONTOURS ON THIS MAP WERE GENERATED USING THE 5'x 5' DATA SET.
- THE DATA DEPICTED ON THIS MAP SHOULD NOT BE USED FOR VOLUME CALCULATION PURPOSES.
- AERIAL IMAGERY PROVIDED BY NYGIS 2020 AND IS FOR ORIENTATION PURPOSES ONLY.
- THIS SURVEY WAS PERFORMED USING REAL TIME KINEMATIC GPS FROM STATION "SHORT BEACH CG FLAGPOLE".

LOCAL CONTROL DATA	NSRS BENCHMARK
BENCHMARK: SHORT BEACH CG FLAGPOLE (KU3161) ELEVATION: 9.70' (NAVD 1988)	BENCHMARK: 12E 02N (KU4917) ELEVATION: 9.91' (NAVD 1988)

US ARMY CORPS OF ENGINEERS
NEW YORK DISTRICT

PR	XX
MP	XX

DATES OF SURVEY:
APRIL 11-13, 2023

SCALE:
ONE INCH = 200 FEET

FIELD BOOKS:
J1-2023

REQ. NO./FILE NO.:XX

APPROVED: D. MODRE
FIELD CARTOGRAPHER

APPROVED: M. FORTE
CHIEF ENGINEERING TECHNICIAN

APPROVED: P. BLADUR
LEAD CARTOGRAPHER

APPROVED: J. MRIZ
DEPUTY CHIEF OF SURVEY

DATE: APRIL 24, 2023

DEPARTMENT OF THE ARMY
U.S. ARMY CORPS OF ENGINEERS
NEW YORK DISTRICT
NEW YORK, NEW YORK 10278

OPERATIONS DIVISION
SURVEY SECTION
CENAN-OP-SS

JONES INLET
LONG ISLAND, NEW YORK

CONDITION SURVEY

VH-102

2 OF 4

