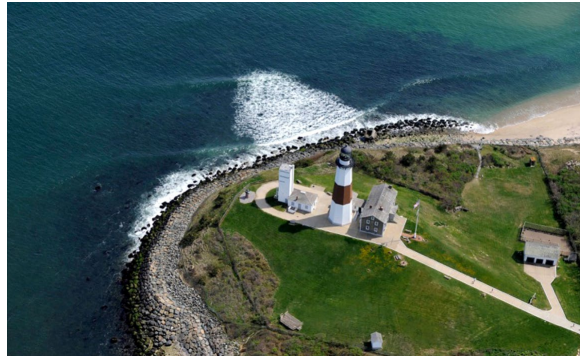


Montauk Point, New York - Construction Project

APRIL 2021



MONTAUK HISTORICAL SOCIETY



Project Purpose:

- The Montauk Point Lighthouse, the first lighthouse built in New York State, is a National Historic Landmark on the Federal and State's Register of Historic Places.
- The Montauk Point Lighthouse, and associated dwelling, was commissioned in 1792 by George Washington and constructed in 1796 approximately 300 feet from edge of the bluff. The Landmark Lighthouse has become increasingly less stable over the years with the lighthouse now sitting less than 100 feet from the edge of the bluff, leaving it extremely vulnerable to coastal storm erosion and significant damage.
- The new project reconstructs the approximate 1,000 linear foot long stone revetment surrounding the bluff area and includes the removal and reuse of existing 5- and 10-ton armor stones, the placement of new 10- and 15-ton median armor stones, and slope stabilization with terracing and vegetation above the upper crest of the new stone revetment.

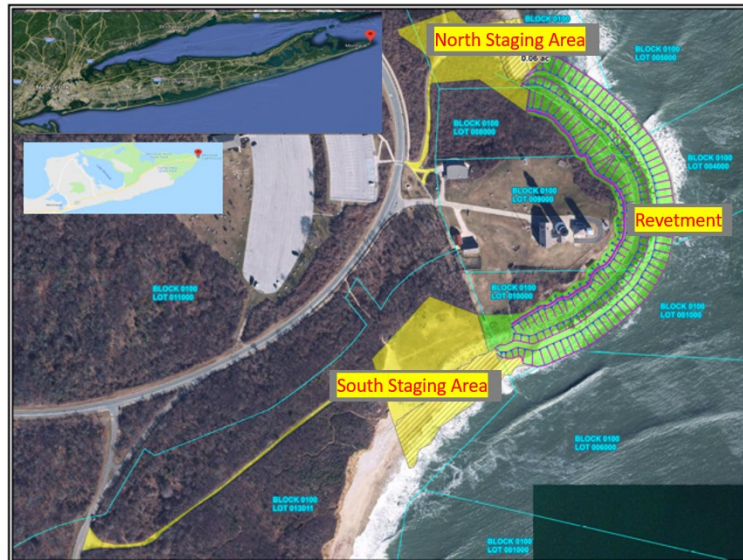
Project Stakeholders:

- U.S. Army Corps of Engineers
- State of New York (non-Federal sponsor)
 - New York State Department of Environmental Conservation
 - New York State Office of Parks, Recreation and Historic Preservation
- Montauk Historical Society (local sponsor)
- Town of East Hampton

Construction Timeline:

- Construction of the new stone revetment is officially underway as of March 2021 and will take approximately 2 years to complete (Spring 2023).

What to Expect During Construction:



Stone Delivery and Equipment:

- New stone is being delivered to the project staging areas via truck, and will be stored onsite within both staging areas.
- Various types of construction equipment will always be present on site.

Public Access during Construction:

- Public parking and Lighthouse Complex will remain OPEN during construction.
- Safe public access will continue into the Lighthouse and along both staging areas for continued public access to nearby beach areas.
- Entire stone revetment area (shown above in green) will be CLOSED to public access during the whole 2-year construction period.
- Both staging areas and access roads (shown above in yellow) will be CLOSED to public during the whole 2-year construction period.
 - South staging area and access road is closed.
 - North staging area and access road will remain open thru Summer Season 2021, but will be closed starting September 2021

Specific Dates with NO Stone Delivery and/or NO Work Onsite:

- Project construction work will normally continue every day, 5 days per week; if necessary, work 7 days per week is permitted
- Please note, during the year there will be certain days with NO stone delivery and/or NO work (***specific dates will be posted shortly***):
 - *St. Patrick's Day*
 - *Memorial Day Weekend*
 - *4th of July Weekend*
 - *Labor Day Weekend*
 - *Columbus Day Weekend*
 - *Halloween*
 - *Thanksgiving Weekend*
 - *Various Lighthouse Concerts and Other Event Dates*

Lighthouse Complex Construction Highlights:

- The new stone revetment will protect the historic Lighthouse, Complex and various associated cultural resources by stabilizing the site.
- The Montauk Historical Society will maintain the project after construction and will continue to protect and preserve this nationally significant landmark.
- The completed project will allow this historic site to continue to be used as a tourism attraction and be enjoyed by fishermen, surfers, and sightseers for many years to come!

Points of contact for project questions:

U.S. Army Corps of Engineers (New York District):

Frank Verga (917) 790-8212
Shewen Bian (646) 942-4532

New York State Department of Environmental Conservation:

Matt Chlebus (518) 402-8185
Ryan Hodgetts (518) 935-8973

Montauk Historical Society:

Greg Donohue (631) 375-8139

New York State Office of Parks, Recreation and Historic Preservation:

Tom Dess (631) 668-2765
Monica Martinez (516) 253-8144

Town of East Hampton:

Peter Van Scoyoc (631) 324-4140