

[illegible]

23.24.28.29 SEPTEMBER.  
13.14 OCTOBER 2015

REQUEST NO.: 43817N3

ONE INCH = 100

---

FIELD BOOKS:

---

APPROVED: M. FORTE CIVIL ENGINEERING TECHNICIAN  
APPROVED: D. CLARKE

APPROVED: \_\_\_\_\_ M. J. ORTEGA  
CIVIL ENGINEERING TECHNICIAN

APPROVED: \_\_\_\_\_ D. CLARKE

APPROVED: J. MRAZ

DATE: 26 OCTOBER 2015

CORPS OF ENGINEERS  
NEW YORK, NEW YORK 10278  
OPERATIONS DIVISION

SURVEY SECTION  
CENAN-OP-S

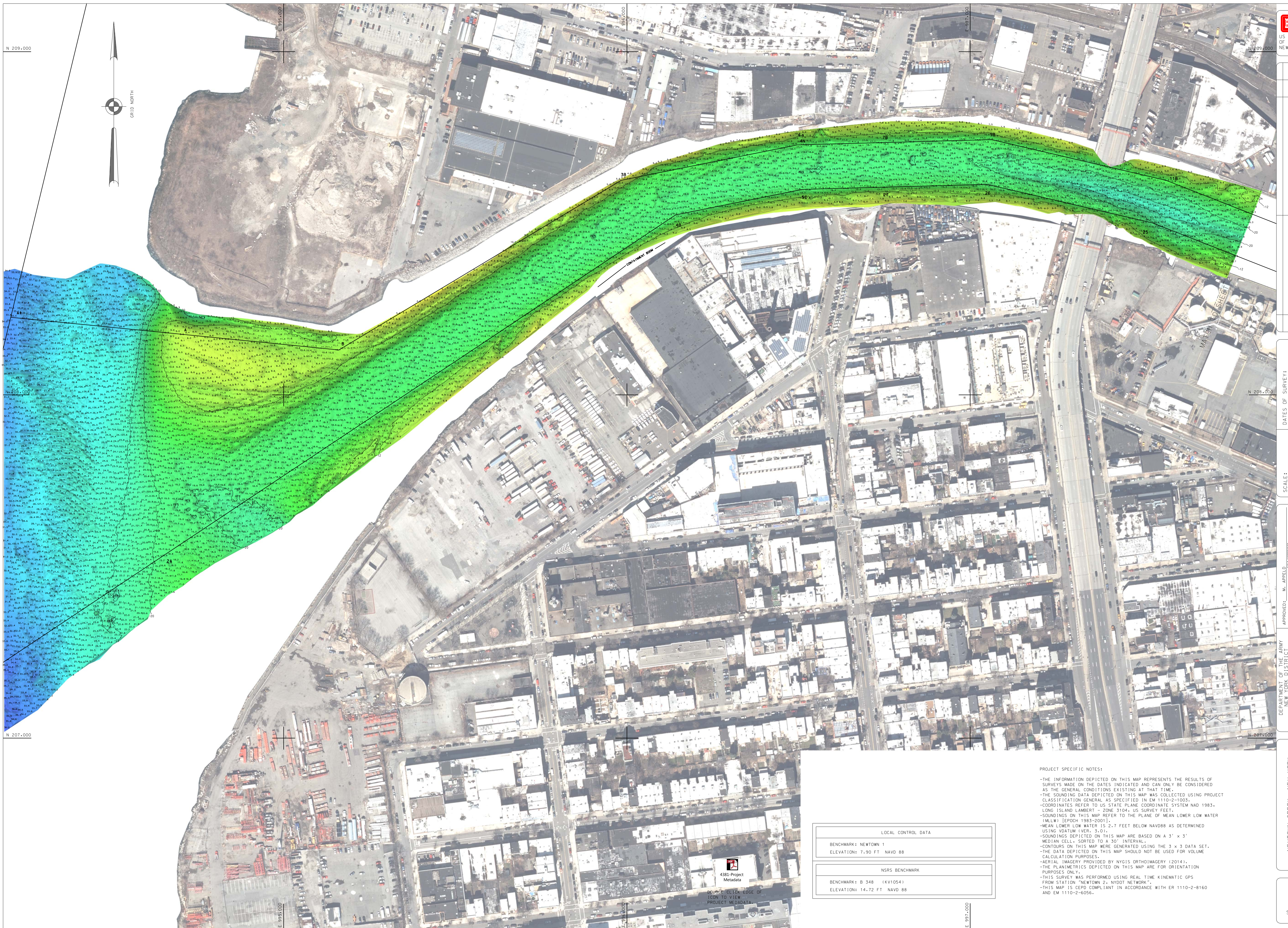
---

NEWTOWN CREEK, NEW YORK  
CONDITION SURVEY

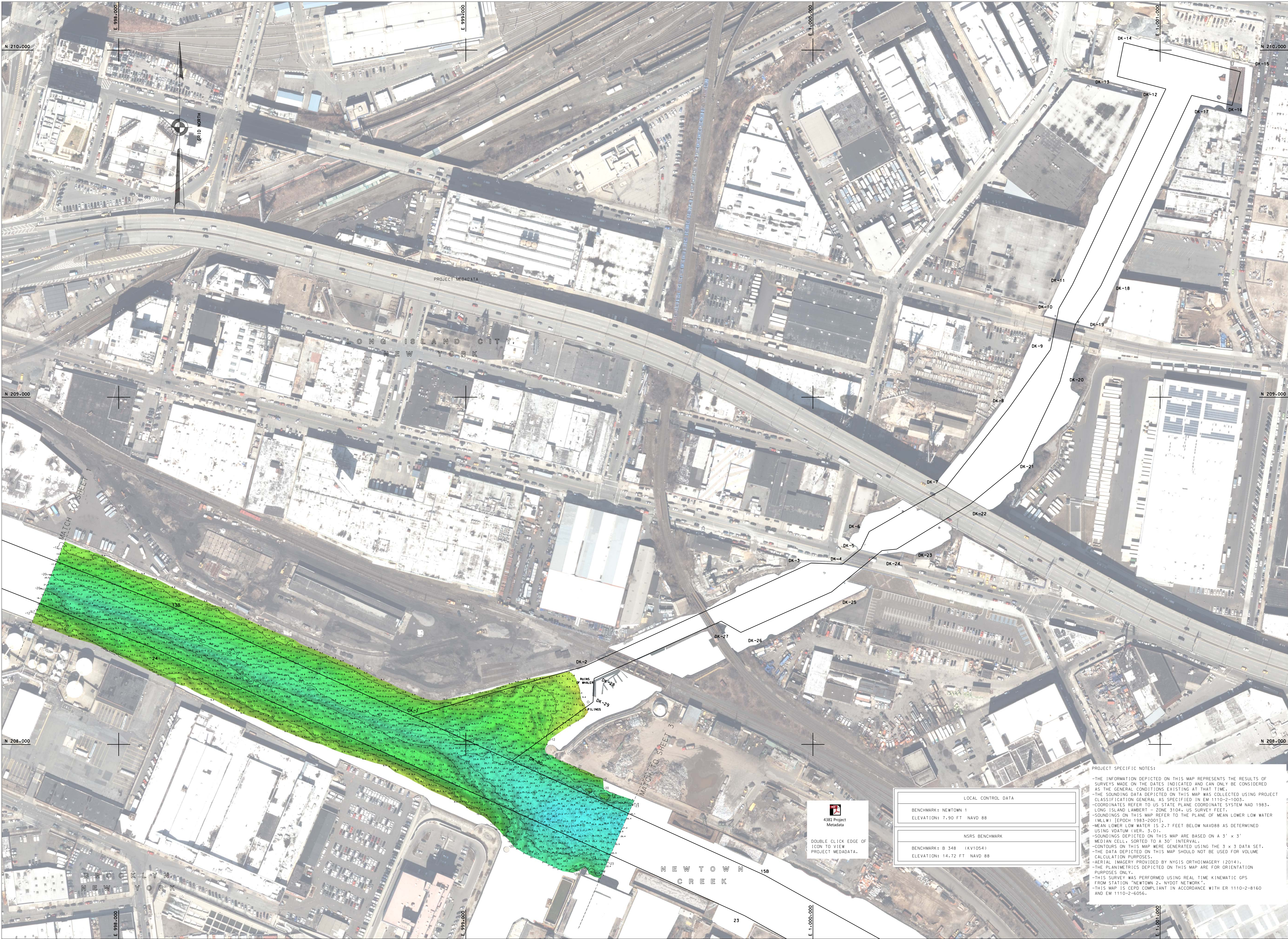
H-101

SHEET 1 OF 7

NO.: 78  
ST NO.: 4381/N3







US ARMY CORPS OF ENGINEERS  
NEW YORK DISTRICT

DATE: 26 OCTOBER 2015	
APPROVED: J. WRAZ	DESIGNED: J. WRAZ
APPROVED: D. CLARK	CHECKED: J. WRAZ
APPROVED: M. FORT	FIELD BODYS: N/A
APPROVED: M. APPEL	SCALE: ONE INCH = 100 FEET
DATES OF SURVEY: 23,24,26,29 SEPTEMBER, 13,14 OCTOBER 2015	
FILE NO.: 178 REQUEST NO.: 4381/N3	

DEPARTMENT OF THE ARMY  
CORPS OF ENGINEERS  
NEW YORK - NEW YORK 10278

OPERATIONS DIVISION  
SURVECTION  
SERVING-OPS

NEW TOWN CREEK - NEW YORK

CONDITION SURVEY

VH-102

SHEET 2 OF 7

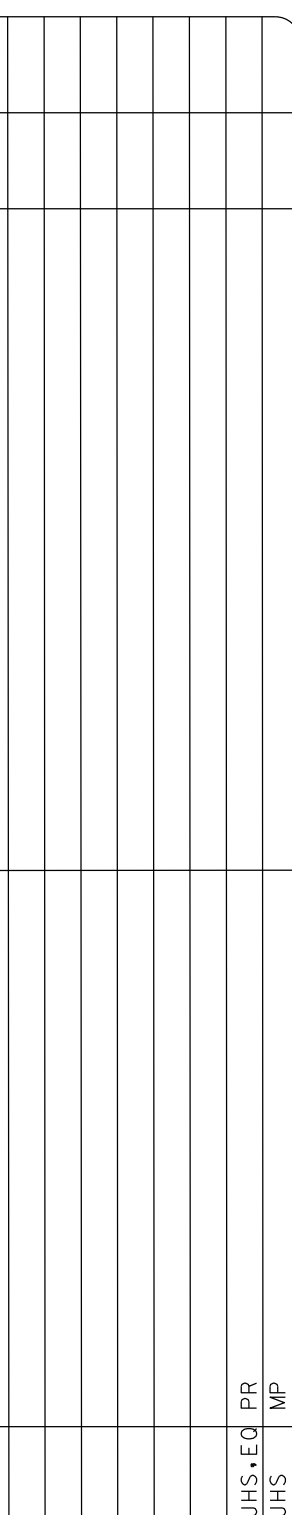
FILE NO.: 178  
REQUEST NO.: 4381/N3

LOCAL CONTROL DATA	
BENCHMARK: NEWTOWN 1	
ELEVATION: 7.90 FT NAVD 88	
NSRS BENCHMARK	
BENCHMARK: B 348 (KV1054)	
ELEVATION: 14.72 FT NAVD 88	

PROJECT SPECIFIC NOTES:

- THE INFORMATION DEPICTED ON THIS MAP REPRESENTS THE RESULTS OF SURVEYS MADE ON THE DATES INDICATED AND CAN ONLY BE CONSIDERED AS THE GENERAL CONDITIONS EXISTING AT THAT TIME.
- THE SOUNDING DATA DEPICTED ON THIS MAP WAS COLLECTED USING PROJECT CLASSIFICATION GENERAL AS SPECIFIED IN EM 1110-2-1003.
- COORDINATES REFER TO US STATE PLANE COORDINATE SYSTEM NAD 1983, LONG ISLAND LAMBERT - ZONE 3104, US SURVEY FEET.
- SOUNDINGS ON THIS MAP REFER TO THE PLANE OF MEAN LOWER LOW WATER (MLLW) [EPOCH 1985-2001].
- MEAN LOWER LOW WATER IS 2.7 FEET BELOW NAVD88 AS DETERMINED USING VDATUM (VER, 3.0).
- SOUNDINGS DEPICTED ON THIS MAP ARE BASED ON A 3' x 3' MEDIAN CELL, SORTED TO A 30' INTERVAL.
- CONTOURS ON THIS MAP WERE GENERATED USING THE 3 x 3 DATA SET.
- THE DATA DEPICTED ON THIS MAP SHOULD NOT BE USED FOR VOLUME CALCULATION PURPOSES.
- AERIAL IMAGERY PROVIDED BY NVCIS ORTHOIMAGERY (2014).
- THE PLANIMETRICS DEPICTED ON THIS MAP ARE FOR ORIENTATION PURPOSES ONLY.
- THIS SURVEY WAS PERFORMED USING REAL TIME KINEMATIC GPS FROM STATION "NEWTOWN 2", NYDOT NETWORK.
- THIS MAP IS CDD COMPLIANT IN ACCORDANCE WITH ER 1110-2-8160 AND EM 1110-2-6056.





DATES OF SURVEY:  
 23.24.28.29 SEPT.  
 13.14 OCT 2015

FILE NO.: 78  
 REQUEST NO.: 4381/N3

SCALE:  
ONE INCH = 100 FEET

---

FIELD BOOKS:  
N/A \_\_\_\_\_  
\_\_\_\_\_  
\_\_\_\_\_

APPROVED:	M. APPEL	FIELD CATERPILLAR
APPROVED:	M. FORTE	CIVIL ENGINEERING CONSULTING
APPROVED:	D. CLARKE	LEAD CATERPILLAR
APPROVED:	J. MRAZ	SENIOR CHIEF OF SURVEYS
DATE:	26 OCTOBER 2015	

DEPARTMENT OF THE ARMY  
NEW YORK DISTRICT  
CORPS OF ENGINEERS  
NEW YORK, NEW YORK 10278

OPERATIONS DIVISION  
SURVEY SECTION  
CENAN-OP-S

NEWTOWN CREEK, NEW YORK  
CONDITION SURVEY

VH-103

SHEET 3 OF 7

FILE NO.: 78  
REQUEST NO.: 4381/NT







SCALE:  
ONE INCH = 100 FEET

FIELD BOOKS:  
N/A

DEPARTMENT OF THE ARMY  
NEW YORK DISTRICT  
CORPS OF ENGINEERS  
NEW YORK, NEW YORK 10278

OPERATIONS DIVISION  
SURVEY SECTION  
CENAN-OP-S

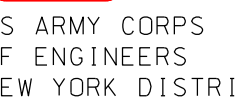
VH-104

SHEET 4 OF 7

FILE NO.: 78  
REQUEST NO.: 4381/N3





[illegible]

SCALE: ONE INCH = 100 FEET	DATES OF SURVEY: 23.24.28.29 SEPT. 13.14 OCT 2015
FIELD BOOKS: N/A	FILE NO.: 78 PROJECT NO.: 4283 AMZ

APPROVED:	M. APPEL	FIELD CHARGEMAN
APPROVED:	M. FORTE	CIVIL ENGINEERING TECHNICIAN
APPROVED:	D. CLARKE	LEAD CHARGEMAN
APPROVED:	J. MRAZ	SENIOR CHIEF OF SQUADS

NEW YORK DISTRICT  
CORPS OF ENGINEERS  
NEW YORK, NEW YORK 10270

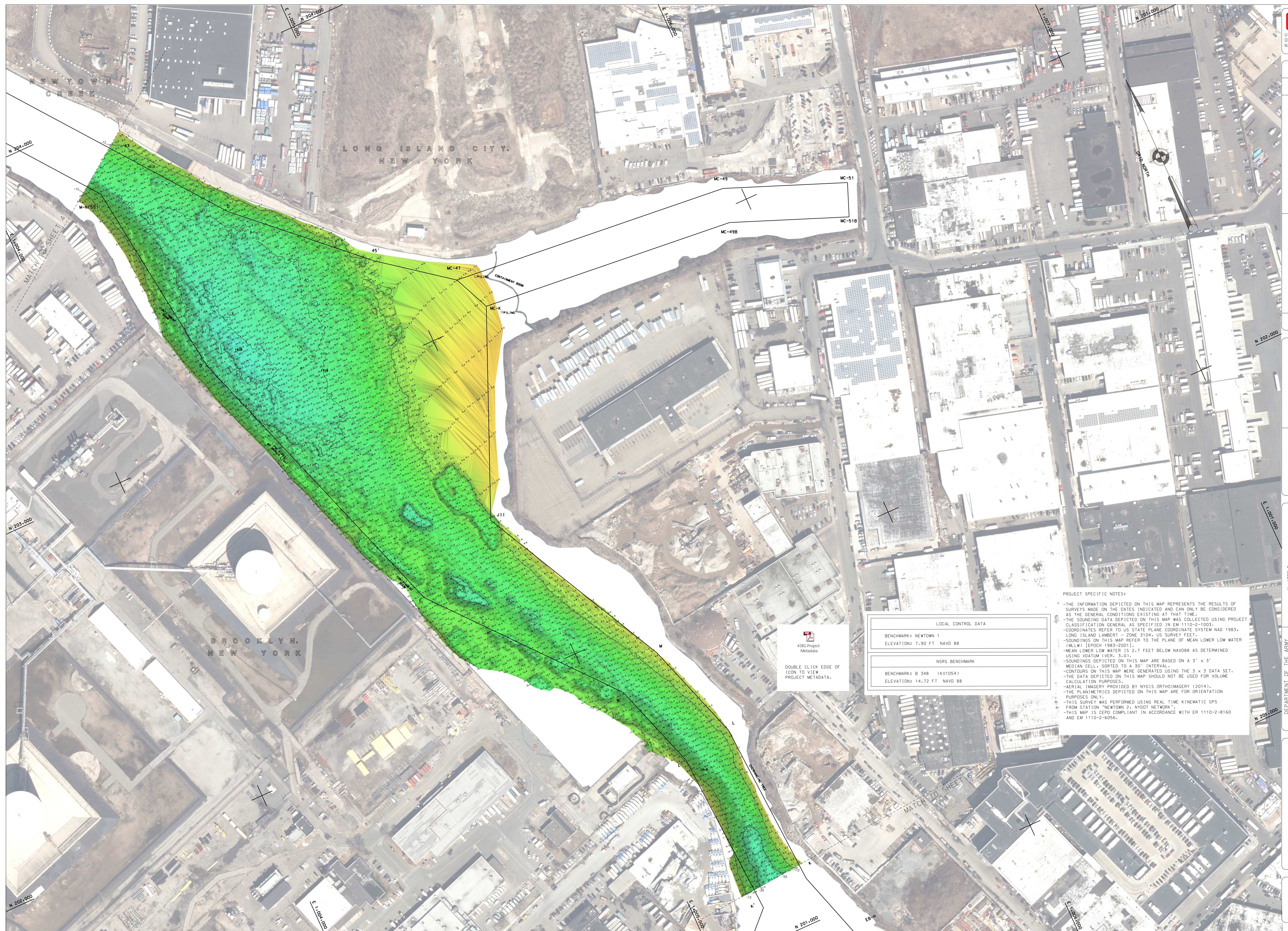
OPERATIONS DIVISION  
SURVEY SECTION  
CENAN-OP-S

NEWTOWN CREEK, NEW YORK  
CONDITION SURVEY

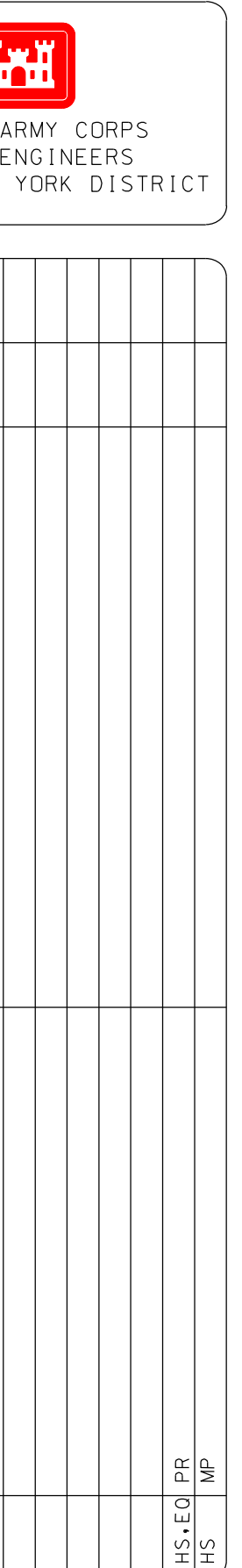
VH-105

SHEET 5 OF 7

FILE NO. 79







23-24-28-29 SEPT.  
13, 14 OCT 2015

FILE NO.: 78  
REQUEST NO.: 4381/N3

ONE INCH = 100 FEET

FIELD BOOKS:

N/A

\_\_\_\_\_

\_\_\_\_\_

\_\_\_\_\_

APPROVED: M. FORTE CIVIL ENGINEERING TECHNICIAN  
APPROVED: D. CLARKE LEAD CARPENTER  
APPROVED: J. WRAZ DEPUTY CHIEF OF SURVEYS  
DATE: 26 OCTOBER 2015

CORPS OF ENGINEERS  
NEW YORK, NEW YORK 10278

OPERATIONS DIVISION  
SURVEY SECTION  
CENAN-OP-S

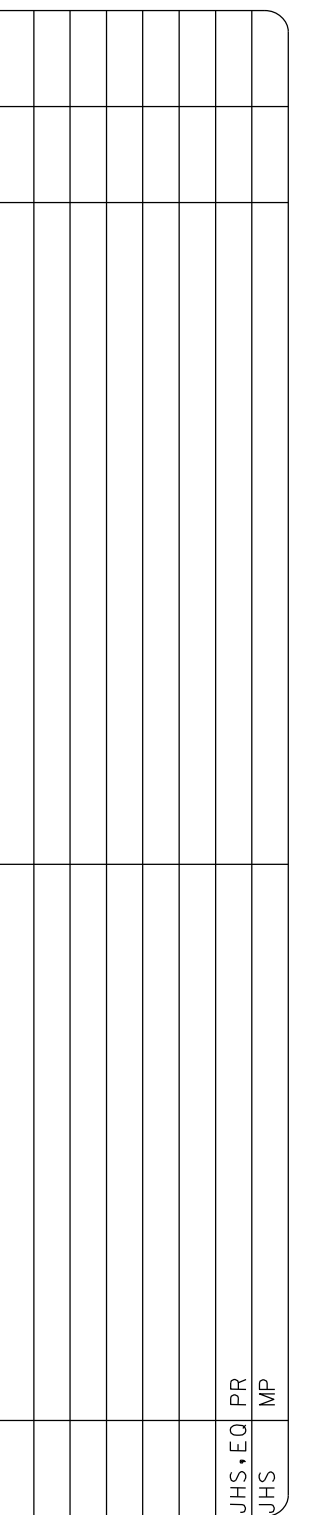
NEWTOWN CREEK, NEW YORK  
CONDITION SURVEY

VH-106

SHEET 6 OF 7

NO. : 78  
T. NO. : 4381/NT





FILE NO.: 78  
REQUEST NO.: 4381/N3

SCALE:  
ONE INCH = 100'

FIELD BOOKS:  
N/A \_\_\_\_\_  
\_\_\_\_\_

APPROVED: \_\_\_\_\_ FIELD CHIEF OF PARTY  
APPROVED: M. FORTE CIVIL ENGINEERING TECHNICIAN  
APPROVED: D. CLARKE LEAD CARPENTER  
APPROVED: J. MRAZ SENIOR CHIEF OF PARTY  
DATE: 26 OCTOBER 2015

NEW YORK DISTRICT  
CORPS OF ENGINEERS  
YORK, NEW YORK 10278

OPERATIONS DIVISION  
SURVEY SECTION  
CENAN-OP-S

NEWTOWN CREEK, NEW YORK

CONDITION SURVEY

VH-107

SHEET 7 OF 7

E NO.: 78  
QUEST NO.: 4381/N3

