

[illegible]

DATES OF SURVEY:
21 SEPT. 2016

SCALE:
ONE INCH = 100 FEET

APPROVED: D. ROGERS
LICENSED SUPERVISOR

APPROVED: R. SMITH
PROJECT MANAGER

APPROVED: D. CLARKE
LEAD CARPENTER

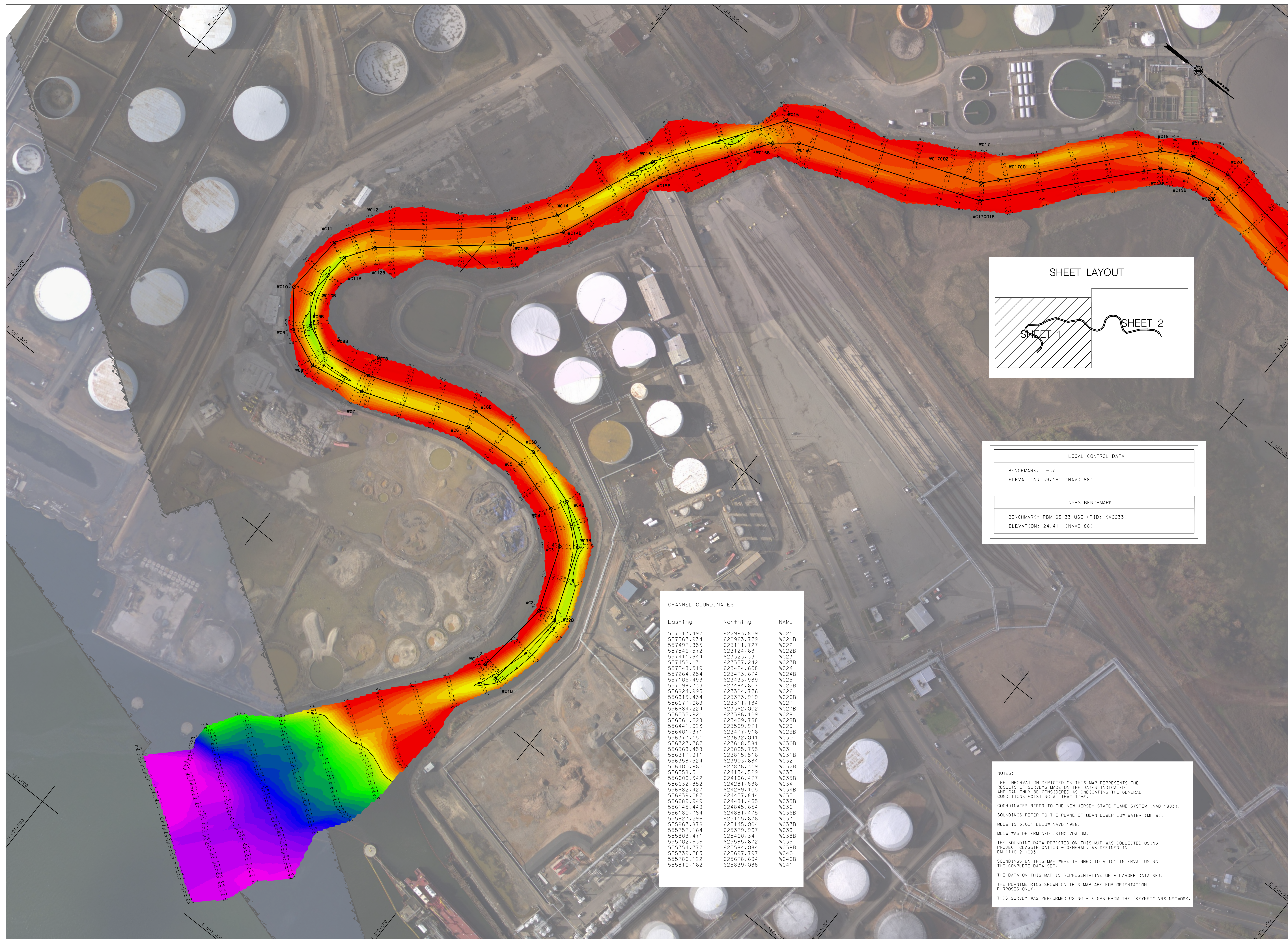
APPROVED: F. POSTIGLIONE

DEPARTMENT OF THE ARMY
NEW YORK DISTRICT
CORPS OF ENGINEERS

HYDROGRAPHIC SURVEY OF WOODBRIDGE CREEK CONDITION SURVEY

VH-102

FILE NO.:2
REQ NO.:4495



CHANNEL COORDINATES			
Eastings	Northings	NAME	
557517.497	622963.829	WC21	
557567.393	622963.777	WC12B	
557497.495	623111.111	WC22	
557546.572	623124.63	WC22B	
557411.944	623323.33	WC23	
557517.497	623407.242	WC24	
557248.519	623424.608	WC24	
557646.254	623431.674	WC24B	
557506.653	623433.699	WC25	
557074.733	623437.607	WC25B	
556824.995	623324.776	WC26	
556813.434	623373.919	WC26B	
556813.069	623373.919	WC27	
556864.224	623362.002	WC27B	
556535.921	623366.129	WC28	
556561.628	623409.768	WC28B	
556441.023	623509.971	WC29	
556401.137	623477.916	WC29B	
556373.717	623632.151	WC30	
556373.767	623632.581	WC30B	
556368.458	623805.755	WC31	
556317.911	623815.516	WC31B	
556315.124	623835.684	WC32	
556400.962	623876.319	WC32B	
556558.45	624134.529	WC33	
556682.342	624106.477	WC34	
556632.852	624181.836	WC34	
556682.427	624269.105	WC34B	
556638.087	624377.244	WC35	
556638.087	624481.465	WC35B	
556145.449	624845.654	WC36	
556180.784	624881.475	WC36B	
556180.783	624881.676	WC37	
559567.876	625145.004	WC37B	
555757.164	625379.907	WC38	
555803.296	625379.907	WC38B	
555702.636	625856.672	WC39	
555754.777	625854.084	WC39B	
555754.783	625879.797	WC40	
555786.122	625878.694	WC40B	
555810.162	625839.088	WC41	

NOTES:

THE INFORMATION DEPICTED ON THIS MAP REPRESENTS THE RESULTS OF SURVEYS MADE ON THE DATES INDICATED AND CAN ONLY BE CONSIDERED AS INDICATING THE GENERAL CONDITIONS EXISTING AT THAT TIME.

COORDINATES REFER TO THE NEW JERSEY STATE PLANE SYSTEM (NAD 1983).

SOUNDINGS REFER TO THE PLANE OF MEAN LOWER LOW WATER (MLLW).

MLW IS 3.02' BELOW NAVD 1988.

MLW WAS DETERMINED USING VDOTM.

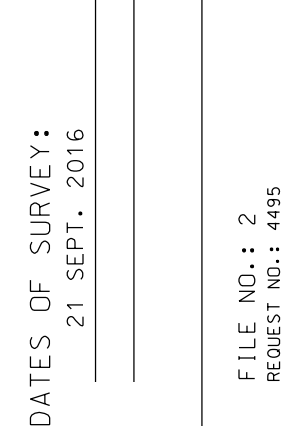
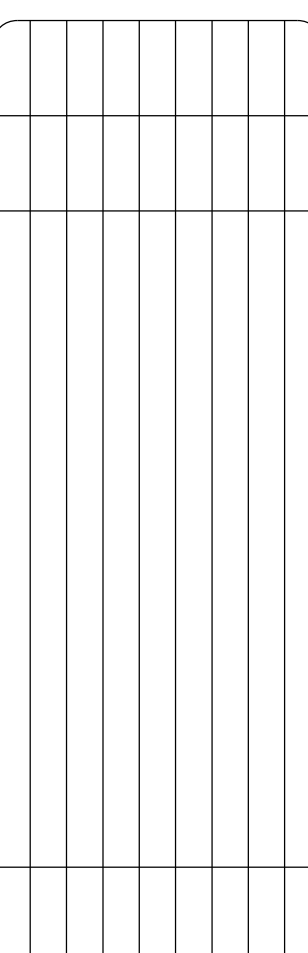
THE SOUNDING DATA DEPICTED ON THIS MAP WAS COLLECTED USING PRODUCT CLASSIFICATION - GENERAL, AS DEFINED IN EM 1110-2-1003.

SOUNDINGS ON THIS MAP WERE THINNED TO A 10' INTERVAL USING THE COMPLETE DATA SET.

THE DATA ON THIS MAP IS REPRESENTATIVE OF A LARGER DATA SET.

THE PLANIMETRICS SHOWN ON THIS MAP ARE FOR ORIENTATION PURPOSES ONLY.

THIS SURVEY WAS PERFORMED USING RTK GPS FROM THE "KEYNET" VRS NETWORK.



SCALE:
ONE INCH = 100 FEET

FIELD BOOKS:

APPROVED: D. ROGERS
LICENSED SURVEYOR

APPROVED: R. SMITH
PROJECT MANAGER

APPROVED: D. CLARKE
LEAD CARTOGRAPHER

APPROVED: F. POSTIGLIONE
CHIEF OF SURVEY

DATE: 09/23/2016

DEPARTMENT OF THE ARMY
NEW YORK DISTRICT
CORPS OF ENGINEERS
NEW YORK, NEW YORK 10278

OPERATIONS DIVISION
SURVEY SECTION
CENAN-OP-S

HYDROGRAPHIC SURVEY OF WOODBRIDGE CREEK CONDITION SURVEY

VH-102

SHEET 2 OF 2

FILE NO.:2
REQ NO.:4495

