

Easting (X)	Northing (Y)	ID
-------------	--------------	----

1021692.282	231219.803 1
1020370.943	234877.005 2
1020238.629	235144.146 3
1019942.860	235602.386 4
1019581.400	235915.695 5
101781.454	236690.189 6
1016710.596	237763.363 7
1016667.968	237838.407 8
1016667.968	237838.407 9
1016171.365	239151.586 10
1016095.482	239400.432 11
1016084.740	239687.667 12
1016182.114	240474.472 13
1016342.792	240998.122 14
1016364.654	241009.717 15
1016424.654	241000.724 16
1016424.654	240972.610 17
1016280.191	241000.724 18
1016184.971	239683.366 19
1016194.926	239417.162 20
1016264.683	239187.745 21
1016499.697	238691.268 22
1016710.053	238034.779 23
1016880.564	237734.600 24
101768.019	238645.226 25
101768.019	238645.226 26
1019669.368	235900.653 27
1020410.161	235062.787 28
1021786.331	231253.782 29

COORDINATES REFER
TO US STATE PLANE (NAD 83), LIL

LOCAL	CONTROL	DATA
-------	---------	------

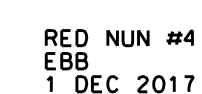
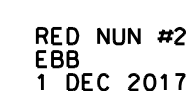
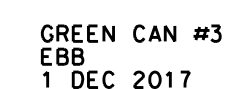
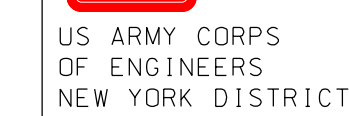
BENCHMARK: RTK RIVERSIDE
ELEVATION: 6.55' (NAVD88)

N.S.B.S. BENCHMARK

BENCHMARK: W 340 (PID KU1003)
ELEVATION: 20.10' (NAVD88)

PROJECT SPECIFIC NOTES:

-THE INFORMATION DEPICTED ON THIS MAP REPRESENTS THE RESULTS OF SURVEYS MADE ON THE DATES INDICATED AND CAN ONLY BE CONSIDERED AS THE GENERAL CONDITIONS EXISTING AT THAT TIME.
-COORDINATES REFER TO US STATE PLANE COORDINATE SYSTEM NAD 83.
-SOUNDINGS ON THIS MAP REFER TO THE PLANE OF MEAN LOWER LOW WATER
-MEAN LOWER LOW WATER IS 3.9 FEET BELOW NAVD83 AS DETERMINED USING DATUM VER. 3.01.
-THE DATA ON THIS MAP HAVE BEEN SORTED TO A
"0" INTERVAL USING THE FULL DATA SET.
-THE DATA ON THIS MAP ARE NOT BEING THE FULL DATA SET.
-THE DATA DEPICTED ON THIS MAP SHOULD NOT BE USED FOR VOLUME
CALCULATIONS OR FLOOD PLANNING.
-AERIAL IMAGERY PROVIDED BY DIGITAL GLOBE INC. (2016)
-THIS MAP WAS MADE USING THE DATA SET FROM THE AERIAL IMAGERY
FROM STATION "CRP RIVERSTEAD, NYDOT NETWORK".
-THIS MAP IS CPTO COMPLIANT AND ACCORDS WITH ER 1110-2-8160
-THIS MAP IS 1110-2-8160

[illegible]

SCALE : ONE INCH = 50 FEET	DATES OF SURVEY : 17 NOV., 1. 4-7 DEC 2017 _____ _____
FIELD BOOKS : N/A	FILE NO. : 55 REQUEST NO. : 4666/M1/M2

DEPARTMENT OF THE ARMY NEW YORK DISTRICT CORPS OF ENGINEERS NEW YORK, NEW YORK 10278	APPROVED: J. BERTOLOTI FULL COMMANDER
	APPROVED: M. FORTE CHIEF ENGINEERING SUPERVISOR
	APPROVED: D. CLARKE LIAISON COMMANDER
	APPROVED: J. MAZ APPROVED FOR USE DATE: 20 DECEMBER 2013

BRONX RIVER
NEW YORK
CONDITION SURVEY

VH-102

SHEET 2 OF 9

FILE NO.: 55
REQUEST NO.: 4646/N1/N

PROJECT SPECIFIC NOTES:

-THE INFORMATION DEPICTED ON THIS MAP REPRESENTS THE RESULTS OF SURVEYS MADE ON THE DATES INDICATED AND CAN ONLY BE CONSIDERED AS THE GENERAL CONDITIONS EXISTING AT THAT TIME.
-COORDINATES REFER TO U.S. STATE PLANE COORDINATE SYSTEM NAD 83.
-SOUNDINGS ON THIS MAP REFER TO THE PLANE OF MEAN LOWER LOW WATER.
-MEAN LOWER LOW WATER IS 3.9 FEET BELOW NAVD83 AS DETERMINED USING DATUM VERT. 3.01.
-SOUNDINGS DEPICTED ON THIS MAP HAVE BEEN SORTED TO A 10' INTERVAL USING THE FULL DATA SET.
-THE DATA ON THIS MAP IS NOT TO BE USED IN REFINING THE MAP DATA SET.
-THE DATA DEPICTED ON THIS MAP SHOULD NOT BE USED FOR VOLUME CALCULATIONS OR PILING PLACEMENT.
-AERIAL IMAGERY PROVIDED BY DIGITAL GLOBE INC. (2016)
-THIS SURVEY WAS REPERFORMED IN 2016 USING KINETIC GPS FROM STATION 18K10150. NYDZ, NETC
-THIS MAP IS CEPO COMPLIANT IN ACCORDANCE WITH ER 1110-2-8160

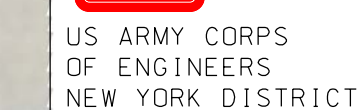
LOCAL	CONTROL	DATA
BENCHMARK: RTK RIVERSIDE		
ELEVATION: 6.55' (NAVD88)		

N	S	R	S	BENCHMARK
BENCHMARK: W 340 (PID KU1003)				
ELEVATION: 20.10' (NAVD88)				



4646 Metadata

METADATA MAY BE VIEWED BY
DOUBLE CLICKING ON ICON EDGE

[illegible]

17 NOV. 1, 4-7 DEC 2017

SCALE:
ONE INCH = 50 FEET

APPROVED: J. BERIOLOTTI
FIELD SUPERVISOR

APPROVED: W. FORTE
CIVIL ENGINEERING TECHNICIAN

APPROVED: D. CLARKE
LEAD CARPENTER

APPROVED: J. MRAZ
DEPUTY CHIEF OF SURVEY

DATE: 20 DECEMBER 2017

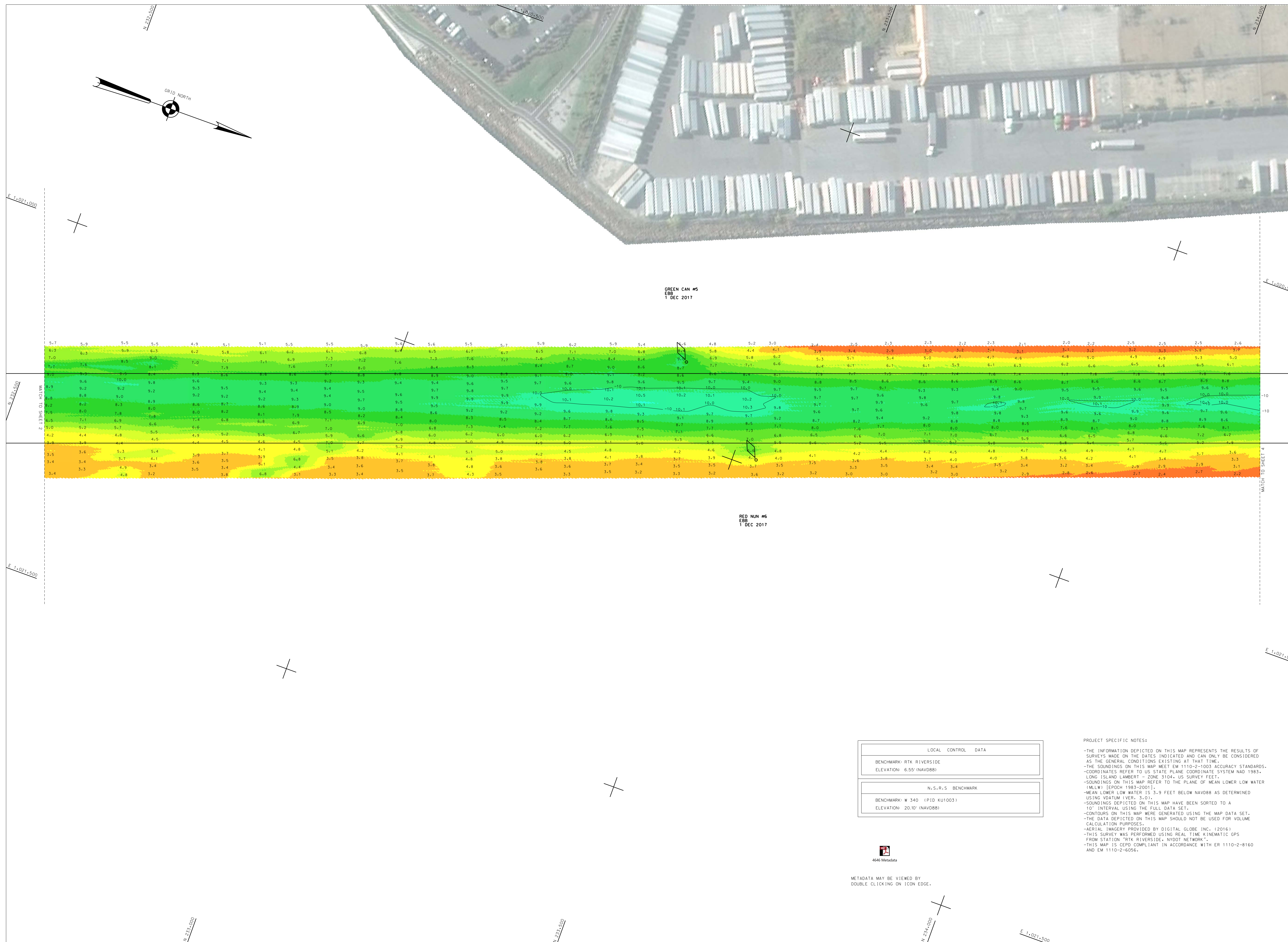
DEPARTMENT OF THE ARMY
NEW YORK DISTRICT
CORPS OF ENGINEERS
NEW YORK, NEW YORK 10278

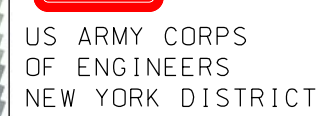
BRONX RIVER
NEW YORK
CONDITION SURVEY

VH-103

SHEET 3 OF 9

FILE NO.: 55
REQUEST NO.: 4646/N1/N



[illegible]

SCALE: ONE INCH = 50 FEET	DATES OF SURVEY: 17 NOV. 1. 4-7 DEC 2017
FIELD BOOKS: N/A	FILE NO.: 55 RECORDING NO.: 466/KN/2

DEPARTMENT OF THE ARMY
NEW YORK DISTRICT
CORPS OF ENGINEERS
NEW YORK, NEW YORK 10278

APPROVED: J. J. BERTOLOTTI
CHIEF OF DISTRICT

APPROVED: M. FORTE
CIVIL ENGINEERING SECTION

APPROVED: D. CLARKE
LIVE CORROSION

OPERATIONS DIVISION
SURVEY SECTION
CBNAW-Q-S

APPROVED: J. MRAZ
PROPERTY CLERK & STAFF

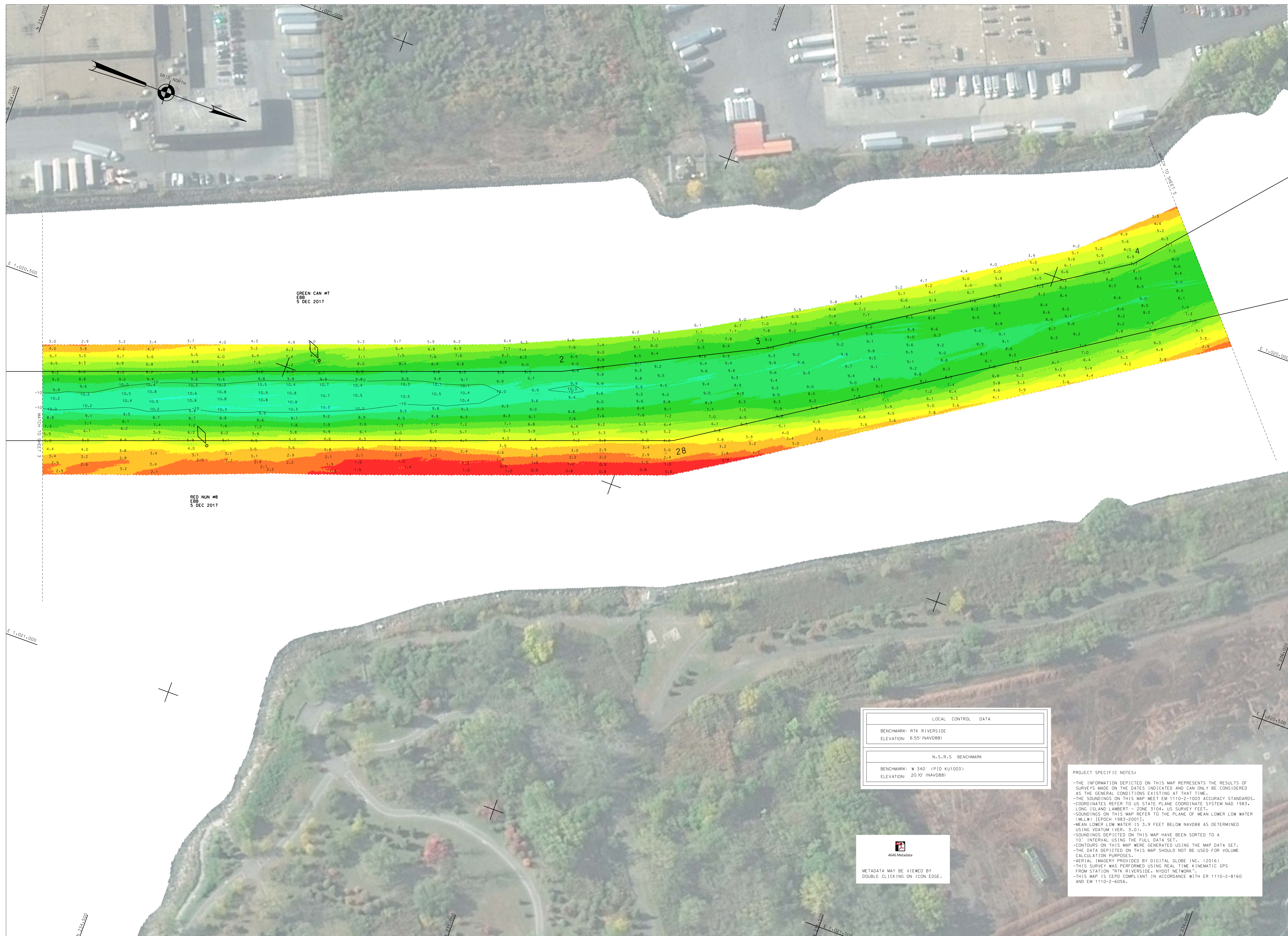
DATE: 20 DECEMBER 2017

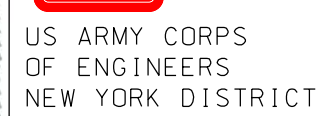
BRONX RIVER
NEW YORK
CONDITION SURVEY

VH-104

SHEET 4 OF 9

FILE NO.: 55
REQUEST NO.: 4646/N1/N2



[illegible]

SCALE: ONE INCH = 50 FEET	DATES OF SURVEY: 17 NOV. 1, 4-7 DEC 2017
------------------------------	---

FIELD BOOKS:

FILE NO.: 55

APPROVED: J. MRAZ
DEPUTY CHIEF OF SUPPLY
DATE: 20 DECEMBER 2017

DEPARTMENT OF THE ARMY
NEW YORK DISTRICT
CORPS OF ENGINEERS
NEW YORK, NEW YORK 10278

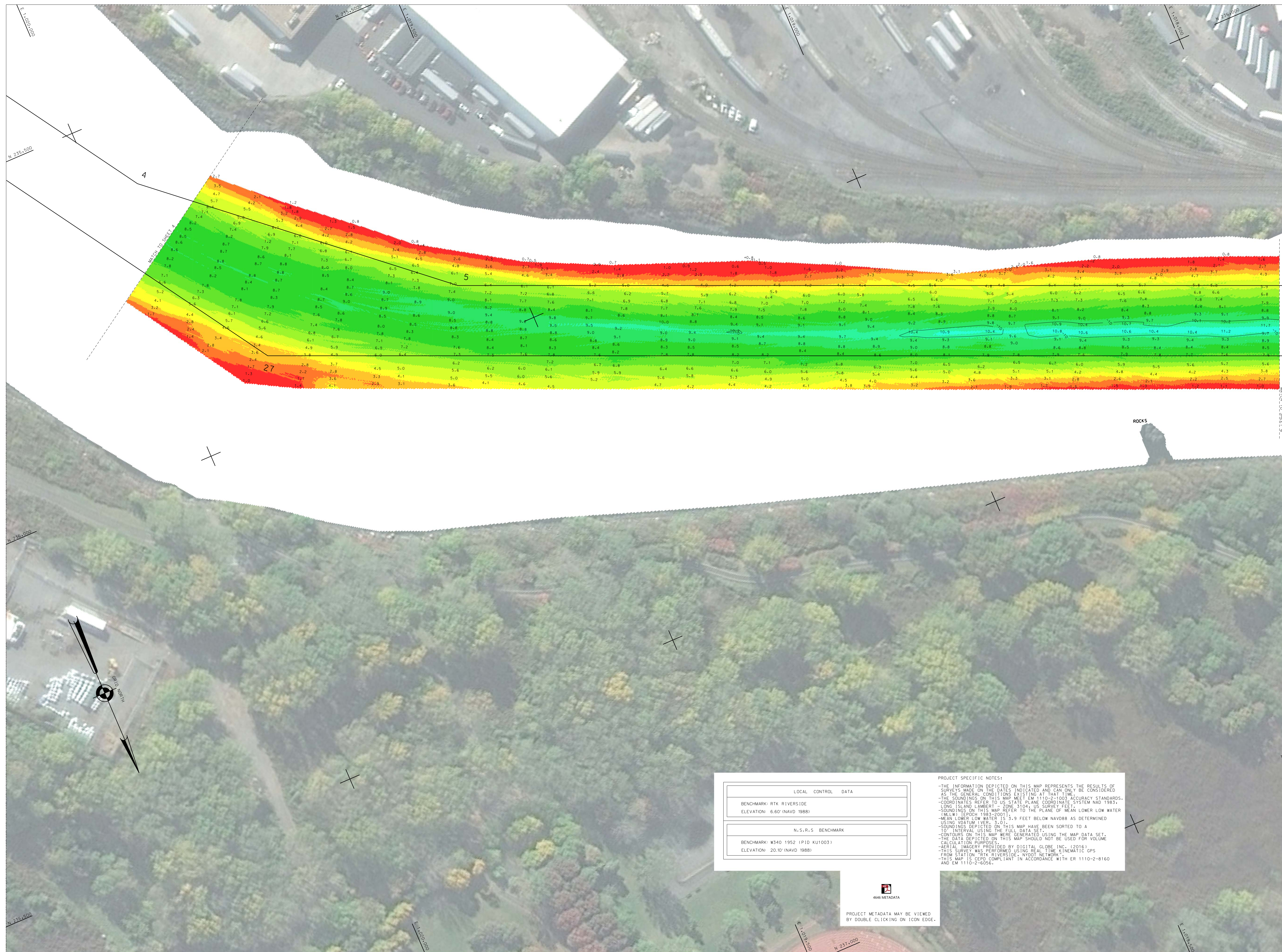
OPERATIONS DIVISION
SURVEY SECTION
CENAN-OP-S

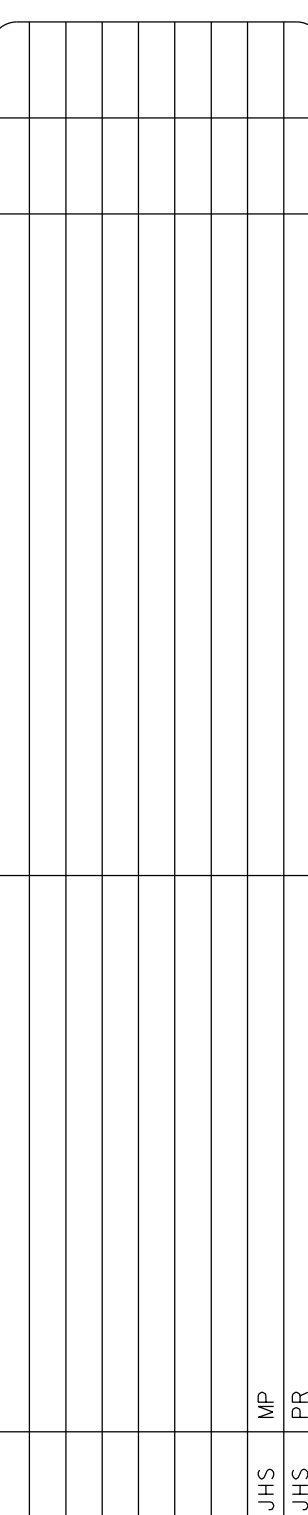
BRONX RIVER
NEW YORK
CONDITION SURVEY

VH-105

SHEET 5 OF 9

FILE NO.: 55
REQUEST NO.: 4646/N1/N2





FILE NO.: 55
REQUEST NO.: 4646/N1/N2

SCALE:
ONE INCH = 50 FEET

FIELD BOOKS:
N/A _____

APPROVED: J. BERLOTTI
FIELD SUPERVISOR

APPROVED: M. FORTE
CIVIL ENGINEERING TECHNICIAN

APPROVED: D. CLARKE
LEAD CARPENTER

APPROVED: J. MRAZ
CITY CHIEF OF SAFETY

DATE: 20 DECEMBER 2017

DEPARTMENT OF THE ARMY
NEW YORK DISTRICT
CORPS OF ENGINEERS
NEW YORK, NEW YORK 10278

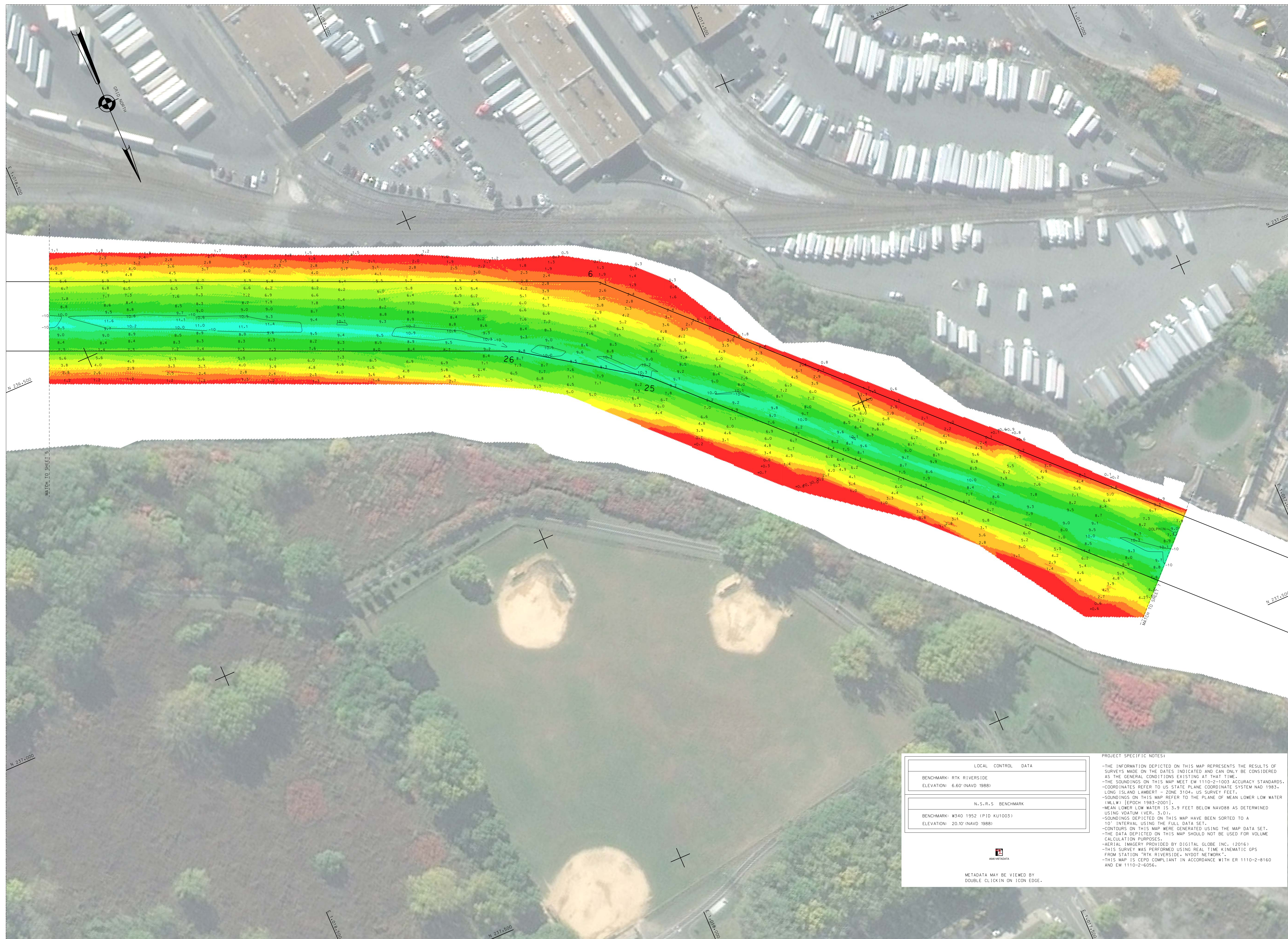
OPERATIONS DIVISION
SURVEY SECTION
CENAN-OP-S

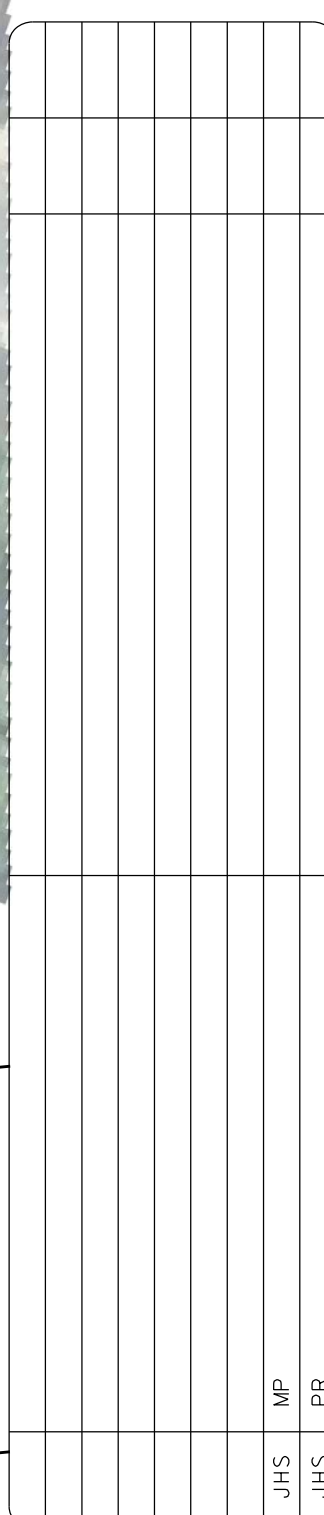
BRONX RIVER
NEW YORK
CONDITION SURVEY

VH-106

SHEET 6 OF 9

FILE NO.: 55
REQUEST NO.: 4646/N1/N2





SCALE : ONE INCH = 50 FEET	DATES OF SURVEY : 17 NOV. 1, 4-7 DEC 2017
FIELD BOOKS : N/A	FILE NO. : 55 REQUEST NO. : 4464NN12

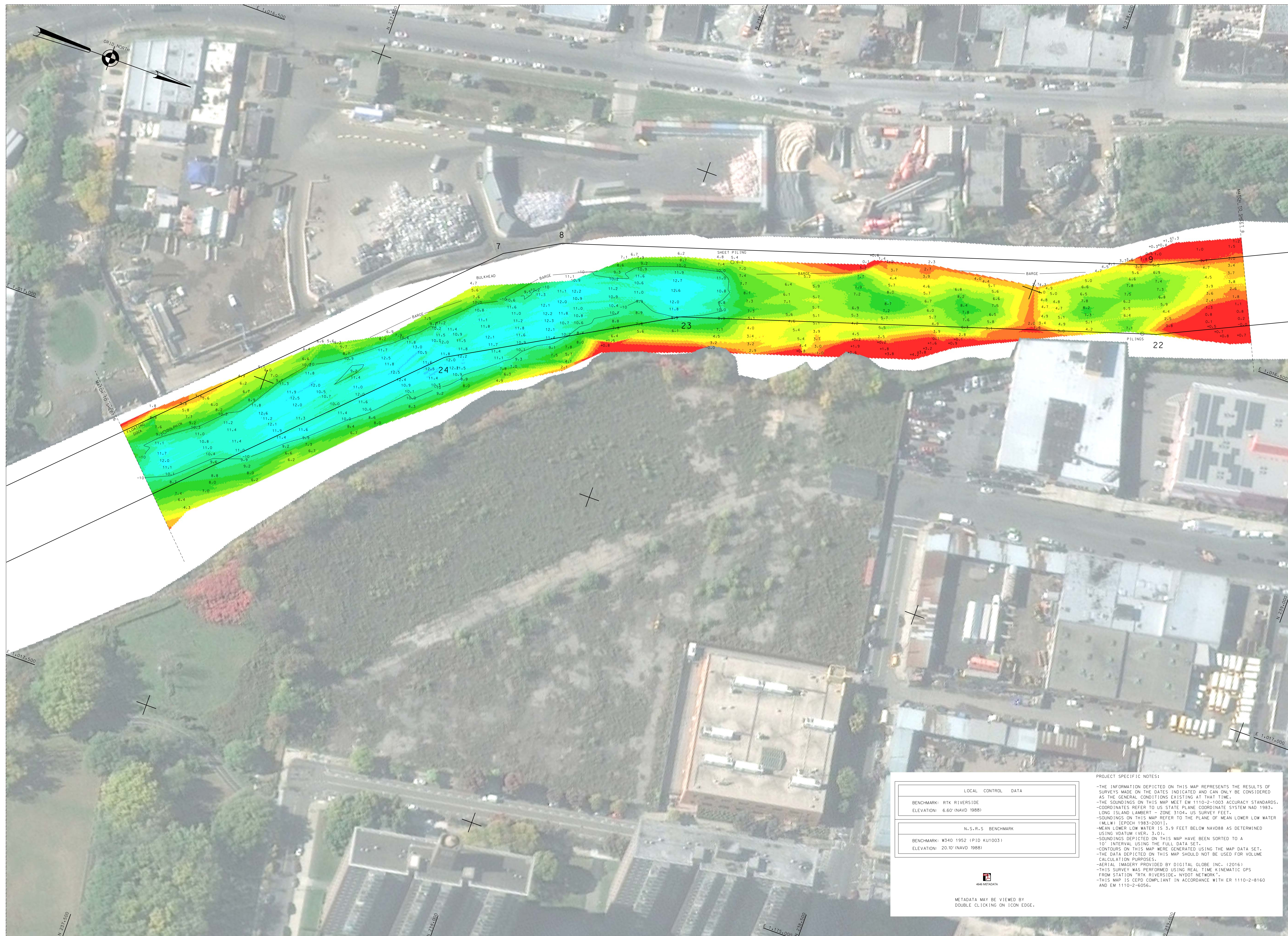
DEPARTMENT OF THE ARMY NEW YORK DISTRICT CORPS OF ENGINEERS NEW YORK, NEW YORK 10278	APPROVED: J. BERTLOTTI CHIEF OF DISTRICT
	APPROVED: M. FORTÉ CIVIL ENGINEERING DIVISION
	APPROVED: D. CLARKE CIVIL ENGINEERING DIVISION
	APPROVED: J. MARZ CIVIL ENGINEERING DIVISION
	DATE: 20 DECEMBER 2017

BRONX RIVER
NEW YORK
CONDITION SURVEY

VH-107

SHEET 7 OF 9

FILE NO.: 55
REQUEST NO.: 4646/N1/N2

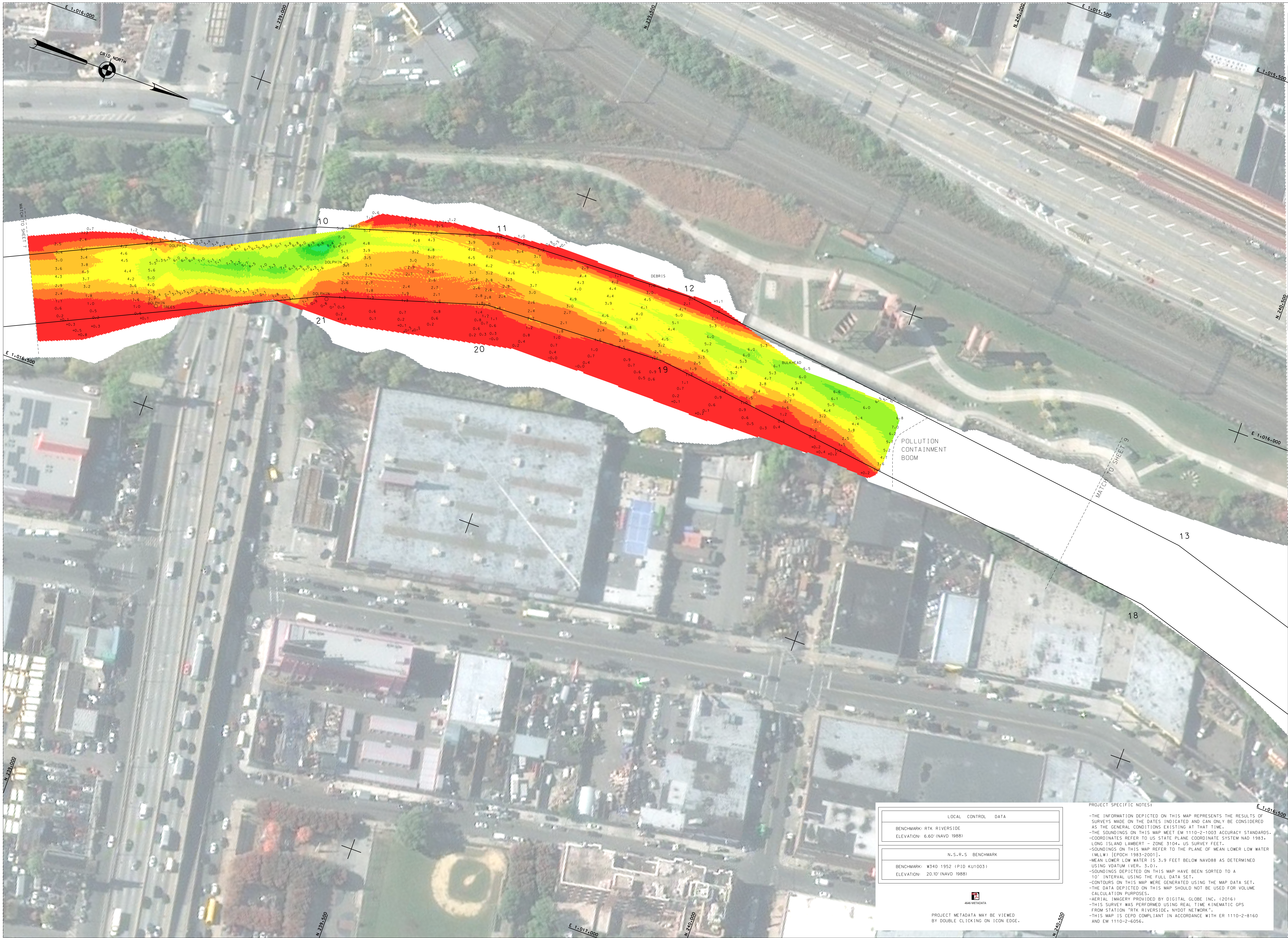


	LOCAL	CONTROL	DATA
BENCHMARK:	RTK	RIVERSIDE	
ELEVATION:	6.60'	(NAVD 1988)	

	N	S	R	S	BENCHMARK
BENCHMARK:	W340	1952	(PID	KU1003)	
ELEVATION:	20.10'	(NAVD 1988)			

PROJECT SPECIFIC NOTES:

- THE INFORMATION DEPICTED ON THIS MAP REPRESENTS THE RESULTS OF SURVEYS MADE ON THE DATES INDICATED AND CAN ONLY BE CONSIDERED AS THE GENERAL CONDITIONS EXISTING AT THAT TIME.
- THE SOUNDINGS ON THIS MAP MEET EN 1110-2-1003 ACCURACY STANDARDS.
- COORDINATES REFER TO US STATE PLANE COORDINATE SYSTEM NAD 83.
- WATER ELEVATION = ZONE 1900, US SURVEY FEET
- SOUNDINGS ON THIS MAP REFER TO THE PLANE OF MEAN LOWER LOW WATER (MLLW) [EPOCH 1983-2000].
- MEAN LOWER LOW WATER IS 3.9 FEET BELOW NAVD83 AS DETERMINED USING VDATUM (VER, 3.0).
- SOUNDINGS DEPICTED ON THIS MAP HAVE BEEN SORTED TO A 10' INTERVAL USING THE FULL DATA SET.
- THE CONTOURS ON THIS MAP WERE DERIVED USING THE MAP DATA SET.
- THE DATA DEPICTED ON THIS MAP SHOULD NOT BE USED FOR VOLUME CALCULATION PURPOSES.
- AERIAL IMAGERY PROVIDED BY DIGITAL GLOBE INC. (2016)
- THIS SURVEY WAS PERFORMED USING REAL TIME KINEMATIC GPS FROM STATION "RTX RIVERSIDE, NYDOT NETWORK".
- MAP 1210 REFERENCE COMPLIANT IN ACCORDANCE WITH ER 1110-2-8160 AND EN 1110-2-6056.



US ARMY CORPS OF ENGINEERS
NEW YORK DISTRICT

DATES OF SURVEY: 11 NOV. 1, 4, 7 DEC 2017	
FILE NO.: 1 55 REQUEST NO.: 1 4646/NY/2	
SCALE: ONE INCH = 50 FEET	FIELD BOOKS: N/A
APPROVED: J. BEETO, OTTL APPROVED: M. EORIE, CIVIL ENGINEERING DIVISION APPROVED: D. CLARKE, CIVIL ENGINEERING APPROVED: J. MRAZ, CIVIL ENGINEERING DATE: 20 DECEMBER 2017	
DEPARTMENT OF THE ARMY NEW YORK DISTRICT NEW YORK, NEW YORK 10278	
OPERATIONS DIVISION SCENARIOS CENAN-OPS	
BRONX RIVER NEW YORK CONDITION SURVEY	
VH-108	
SHEET 8 OF 9	

LOCAL CONTROL DATA
BENCHMARK: RTK RIVERSIDE ELEVATION: 6.60' (NAVD 1988)
N.S.R.S. BENCHMARK
BENCHMARK: M340 1952 (PID K01003) ELEVATION: 20.10' (NAVD 1988)

PROJECT METADATA MAY BE VIEWED
BY DOUBLE CLICKING ON ICON EDGE.

PROJECT SPECIFIC NOTES:

- THE INFORMATION DEPICTED ON THIS MAP REPRESENTS THE RESULTS OF SURVEYS MADE ON THE DATES INDICATED AND CAN ONLY BE CONSIDERED AS THE GENERAL CONDITIONS EXISTING AT THAT TIME.
- THE SOUNDINGS ON THIS MAP MEET EM 1110-2-1003 ACCURACY STANDARDS.
- COORDINATES REFER TO US STATE PLANE COORDINATE SYSTEM NAD 1983, LONG ISLAND LAMBERT - ZONE 3104, US SURVEY FEET.
- SOUNDINGS ON THIS MAP REFER TO THE PLANE OF MEAN LOWER LOW WATER (MLLW) [EPOCH 1985-2001].
- MEAN LOWER LOW WATER IS 3.9 FEET BELOW NAVD88 AS DETERMINED USING VDATUM IVER, 3.01.
- SOUNDINGS DEPICTED ON THIS MAP HAVE BEEN SORTED TO A 10' INTERVAL USING THE FULL DATA SET.
- CONTOURS ON THIS MAP WERE GENERATED USING THE MAP DATA SET.
- THE DATA DEPICTED ON THIS MAP SHOULD NOT BE USED FOR VOLUME CALCULATION PURPOSES.
- AERIAL IMAGERY PROVIDED BY DIGITAL GLOBE INC. (2016)
- THIS SURVEY WAS PERFORMED USING REAL TIME KINEMATIC GPS FROM STATION "RTK RIVERSIDE" NAVDOT NETWORK.
- THIS MAP IS CEPD COMPLIANT IN ACCORDANCE WITH ER 1110-2-8160 AND EM 1110-2-6056.

