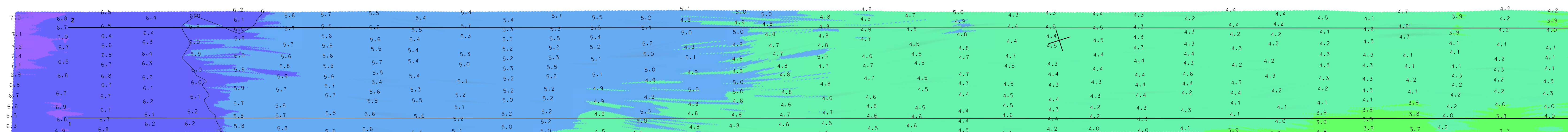


GREEN CAN #5  
FLOOD  
15 AUGUST 2018



RED NUN #6  
FLOOD  
15 AUGUST 2018

'SLOW/NO WAKE' BUOY  
FLOOD  
15 AUGUST 2018

[illegible]

SCALE: ONE INCH = 50 FEET	DATES OF SURVEY: 14-15 AUGUST 2018
FIELD BOOKS:	FILE NO.: 37 855-01724

DEPARTMENT OF THE ARMY NEW YORK DISTRICT NEW YORK OFFICE NEW YORK, NEW YORK 10278	APPROVED: J. BERTOLOTTI FILE EXTENSION
	APPROVED: M. FRITE CIVIL INDIAN/INDIGEN
	APPROVED: D. CLARE FILE EXTENSION
OPERATIONS DIVISION SURVEY CERNAN-OP-S	APPROVED: J. MRAZ BRIEF OFFICE OF SURVEY

MILTON HARBOR, NEW YORK  
CONDITION SURVEY

VH-101

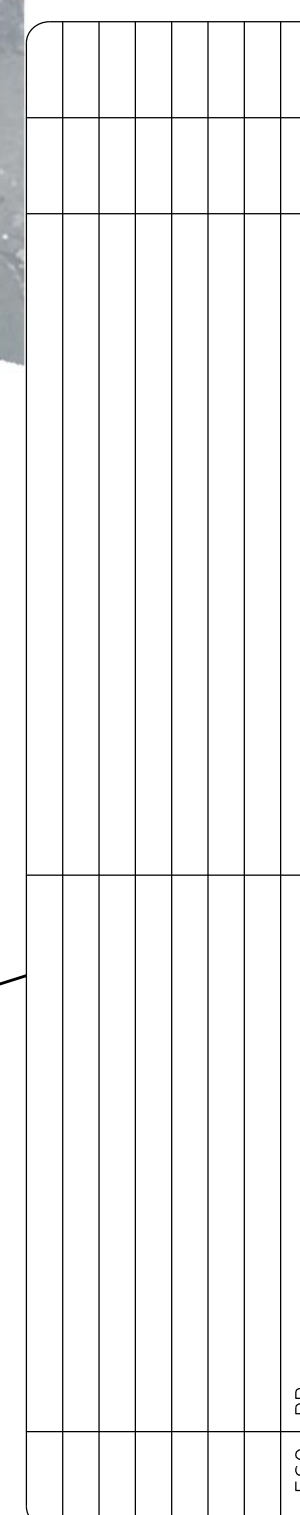
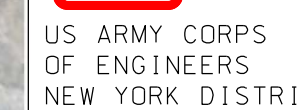
SHEET 1 OF 4

FILE NO.: 37  
REQ NO.: 4737/

PROJECT SPECIFIC NOTES:

- THE INFORMATION DEPICTED ON THIS MAP REPRESENTS THE RESULTS OF SURVEYS MADE ON THE DATES INDICATED AND CAN ONLY BE CONSIDERED AS THE GENERAL CONDITIONS EXISTING AT THAT TIME.
- COORDINATES ARE BASED ON THE NATIONAL GEODESIC SURVEY STANDARDS AND COORDINATES REFER TO THE STATE PLANE COORDINATE SYSTEM NAD 1983, NAD 83 (EPOCH 1983-2011).
- ELEVATION REFERENCE - ZONE 2900, US SURVEY MEAN.
- SOUNDINGS IN THIS SURVEY TO THE PLANE OF FEET.
- MEAN LOWER LOW WATER IS 4.2 FEET BELOW NAVD83 AS DETERMINED USING VDATUM (VER, 3.0).
- SOUNDINGS IN THIS SURVEY TO THE PLANE OF FEET HAVE BEEN SORTED TO A 10' INTERVAL USING THE FULL DATA SET.
- CONTOURS ON THIS MAP WERE GENERATED USING THE MAP DATA SET.
- THE DATA DEPICTED ON THIS MAP SHOULD NOT BE USED FOR VOLUME CALCULATION PURPOSES.
- AERIAL IMAGERY PROVIDED BY DIGITAL GLOBE 2018
- THIS SURVEY WAS PERFORMED USING REAL TIME KINEMATIC GPS FROM STATION "RTX DEPAUW".
- THIS MAP IS CPTD COMPLIANT IN ACCORDANCE WITH ER 1110-2-8160





SCALE : ONE INCH = 50 FEET	DATES OF SURVEY : 14-15 AUGUST 2018
FIELD BOOKS : _____	FILE NO. : 37

DEPARTMENT OF THE ARMY ENGINEERING CENTER CORPS OF ENGINEERS NEW YORK NEW YORK 10278	APPROVED: J. BERTOLOTI FIELD COMMANDER
	APPROVED: M. FORTE CIVIL, MATERIALS, TRANSLATION
	APPROVED: D. CLARKE LIVE COMMANDER
OPERATIONS DIVISION SURVEY SECTION CENAN-OPS	APPROVED: J. MBRAZ CENAN-OPS

MILTON HARBOR, NEW YORK  
CONDITION SURVEY

VH-102

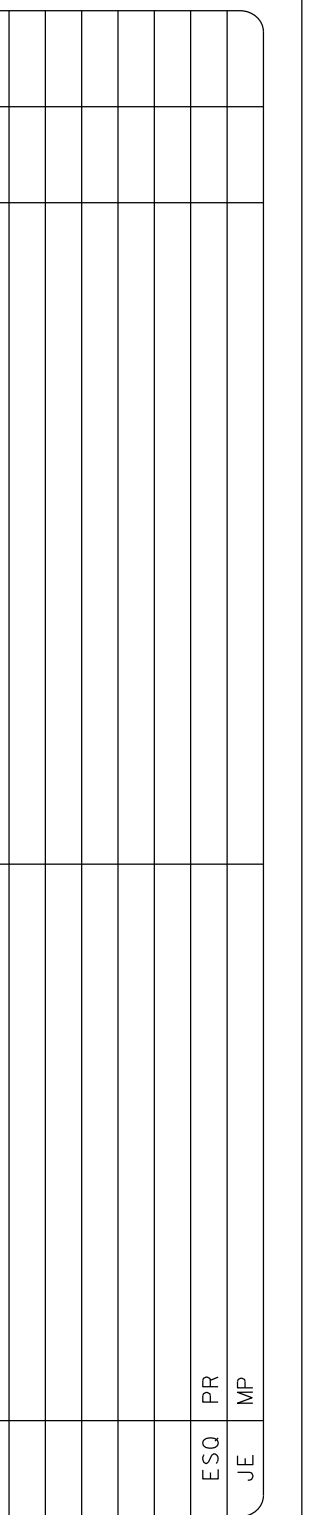
SHEET 2 OF 4

FILE NO.: 37  
REQ NO.: 4737/

PROJECT SPECIFIC NOTES:

- THE INFORMATION DEPICTED ON THIS MAP REPRESENTS THE RESULTS OF SURVEYS MADE ON THE DATES INDICATED AND CAN ONLY BE CONSIDERED AS THE GENERAL CONDITIONS EXISTING AT THAT TIME.
- THE SOUNDINGS ON THIS MAP MEET PLM 1110-2-1003 ACCURACY STANDARDS. COORDINATES REFER TO US STATE PLANE COORDINATE SYSTEM NAD83.
- THE SOUNDINGS ON THIS MAP REFER TO THE PLANE OF MEAN LOWER LOW WATER (MLLW) [EPOCH 1983-2001].
- THE LOWEST LOW WATER (LLW) IS 4.2 FEET BELOW NAVD83 AS DETERMINED USING DATUM (WYD, 3.0').
- SOUNDINGS DEPICTED ON THIS MAP HAVE BEEN SORTED TO A 10' INTERVAL USING THE FULL DATA SET.
- CONTOURS OF THIS MAP ARE USING THE MAP DATA SET.
- THE DATA DEPICTED ON THIS MAP SHOULD NOT BE USED FOR VOLUME CALCULATION PURPOSES.
- AERIAL IMAGERY DERIVED BY DIGITAL GLOBE 2018
- THIS SURVEY WAS PERFORMED USING REAL TIME KINEMATIC GPS FROM STATION "RTP DEPAUM".
- THIS MAP IS CEK COMPLIANT IN ACCORDANCE WITH PLM 1110-2-8160 AND ELM 1110-6076.





ONE INCH = 50 FEET	6/4-15 AUGUST 2018
FIELD BOOKS:	
_____	FILE NO.: 37 REQUEST NO.: 4737/A

APPROVED: <u>MR. FORTÉ</u> <small>FOR THE COMMANDER</small>	APPROVED: <u>D. CLARKE</u> <small>VICE COMMANDER</small>
APPROVED: <u>J. MRAZ</u> <small>DEPUTY CHIEF OF PARTY</small>	DATE: <u>21 AUGUST 2018</u>

MILTON HARBOR, NEW YORK  
CONDITION SURVEY

VH-103

SHEET 3 OF 4

NO.: 37  
NO.: 4737/A

PROJECT SPECIFIC NOTES:

- THE INFORMATION DEPICTED ON THIS MAP REPRESENTS THE RESULTS OF SURVEYS MADE ON THE DATES INDICATED AND CAN ONLY BE CONSIDERED AS THE GENERAL CONDITIONS EXISTING AT THAT TIME.

- COORDINATES ARE GIVEN IN THE U.S. STANDARD SURVEYING COORDINATE SYSTEMS--COORDINATES REFER TO US STATE PLANE COORDINATE SYSTEM NAD 83, NEW JERSEY MERCATOR-- ZONE 2000, US SURVEY FEET.

- SOUNDINGS ON THIS MAP ARE REFERRED TO THE PLANE OF MEAN LOWER LOW WATER (MLLW) [EPOCH 1983-2001].

- MEAN LOWER LOW WATER IS 4-2 FEET BELOW NAVD83 AS DETERMINED BY THE VERTICAL DATUM.

- SOUNDINGS DEPICTED ON THIS MAP HAVE BEEN SORTED TO A 10' INTERVAL USING THE FUEL DATA SET.

- SOUNDINGS ON THIS MAP ARE MEAN LOWER LOW WATER (MLLW) DATA SET.

- THE DATA DEPICTED ON THIS MAP SHOULD NOT BE USED FOR VOLUME CALCULATION PURPOSES.

- AERIAL IMAGERY PROVIDED BY DIGITAL GLOBE 2018.

- THIS SURVEY WAS PERFORMED USING REAL TIME KINEMATIC GPS FROM STATION "RTK DEPAUX".

- MAP WAS CEDED TO THE STATE OF NEW JERSEY IN ACCORDANCE WITH ER 1110-2-8160 AND EM 1110-2-6056.

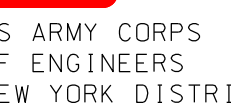
NSRS BENCHMARK	
BENCHMARK:	851 B091 A TIDAL (PID AB3668)
ELEVATION:	24.70' (NAVD 1988)

LOCAL CONTROL DATA	
BENCHMARK:	TON
ELEVATION:	8.15' (NAVD 1988)





[illegible]

FILE NO.: 37

SCALE:  
ONE INCH = 50 FEET

---

FIELD BOOKS:  
\_\_\_\_\_

APPROVED: J. J. DEBOLT  
FIELD ENGINEER

APPROVED: M. FORTE  
CIVIL ENGINEERING TECHNICIAN

APPROVED: D. CLARKE  
LEAD CARPENTER

APPROVED: J. MRAZ  
SENIOR CIVIL ENGINEER

NEW YORK DISTRICT  
CORPS OF ENGINEERS  
NEW YORK, NEW YORK 10278

OPERATIONS DIVISION  
SURVEY SECTION  
CENAN-OP-S

MILTON HARBOR, NEW YORK

CONDITION SURVEY

VH-104

FILE NO.: 37  
Q NO.: 4737/A

