

DATE OF SURVEY: 18-20-21-26-27 DECEMBER 2018	FILE NO.: 115 REQUEST NO.: 4781/0
SCALE: ONE INCH = 200 FEET	FIELD BOOKS: N/A
APPROVED: L. GEORGE	APPROVED: J. MAZ
APPROVED: M. EDGIE	DATE: 9 JANUARY 2019

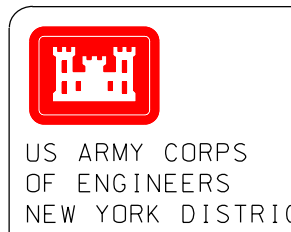
DEPARTMENT OF THE ARMY CORPS OF ENGINEERS NEW YORK, NEW YORK 10278	OPERATIONS DIVISION NEW YORK HARBOR NEW YORK
--	--

APPROVED: L. GEORGE	APPROVED: J. MAZ
APPROVED: M. EDGIE	DATE: 9 JANUARY 2019

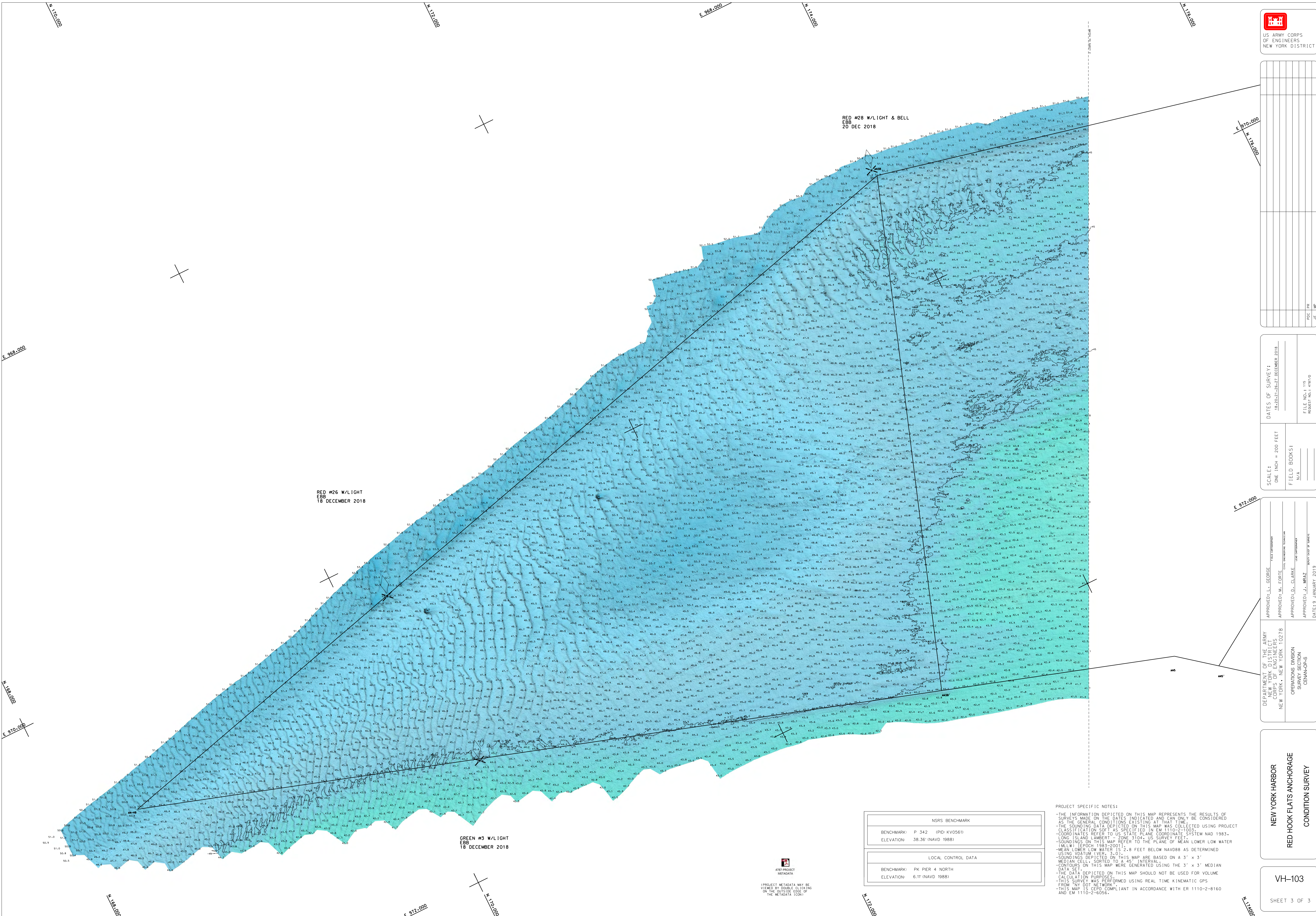
NEW YORK HARBOR RED HOOK FLATS ANCHORAGE CONDITION SURVEY	VH-102 SHEET 2 OF 3
---	------------------------

NSRS BENCHMARK BENCHMARK: P 342 IP10: KV05611 ELEVATION: 38.36' (NAVD 1988)
LOCAL CONTROL DATA BENCHMARK: PK PIER 4 NORTH ELEVATION: 6.11' (NAVD 1988)

PROJECT SPECIFIC NOTES:
- THE INFORMATION DEPICTED ON THIS MAP REPRESENTS THE RESULTS OF SURVEYS MADE ON THE DATES INDICATED AND CAN ONLY BE CONSIDERED AS THE GENERAL CONDITIONS EXISTING AT THAT TIME COLLECTED USING PROJECT CLASSIFICATION SOFTWARE AS SPECIFIED IN EM 1110-2-1003.
- THIS SURVEY WAS PERFORMED USING REAL TIME KINEMATIC GPS FROM THE NY DOT NETWORK.
- THIS MAP IS CEIP COMPLIANT IN ACCORDANCE WITH EM 1110-2-8160 AND EM 1110-2-6059.



U.S. ARMY CORPS OF ENGINEERS
NEW YORK DISTRICT



DATE	DESCRIPTION	BY

DATES OF SURVEY: 18 DEC 2018; 20 DEC 2018	SCALES: ONE INCH = 200 FEET FIELD BOOKS: N/A
--	---

APPROVED: L. GERBE	OPERATIONS DIVISION SPECIAL INVESTIGATION NEW YORK
APPROVED: M. EDGIE	NEW YORK HARBOR RED HOOK FLATS ANCHORAGE CONDITION SURVEY
APPROVED: D. CLARKE	
APPROVED: J. MAZ	
DATE: 9 JANUARY 2019	

NEW YORK HARBOR
RED HOOK FLATS ANCHORAGE
CONDITION SURVEY

NSRS BENCHMARK
BENCHMARK: P 342 (PID: KV0561)
ELEVATION: 36.36 (NAVD 1988)

LOCAL CONTROL DATA
BENCHMARK: PK PIER 4 NORTH
ELEVATION: 6.11 (NAVD 1988)

PROJECT SPECIFIC NOTES:
-THE INFORMATION DEPICTED ON THIS MAP REPRESENTS THE RESULTS OF SURVEYS MADE ON THE DATES INDICATED AND CAN ONLY BE CONSIDERED AS THE GENERAL CONDITIONS EXISTING AT THAT TIME.
-THE SOUNDING DATA DEPICTED ON THIS MAP WAS COLLECTED USING PROJECT LONG ISLAND LAMBERT - ZONE 1804 - US SURVEY FEET.
-COORDINATES REFER TO US STATE PLANE COORDINATE SYSTEM NAD 1983.
-SOUNDINGS ON THIS MAP REFER TO THE PLANE OF MEAN LOWER LOW WATER (MLLW) DATUM 1988.
-MEAN LOWER LOW WATER IS 2.8 FEET BELOW NAVD88 AS DETERMINED USING DATUM 1988.
-SOUNDINGS DEPICTED ON THIS MAP ARE BASED ON A 3' X 3' MEDIAN CELL, SORTED TO A 4' INTERVAL.
-CONTOURS ON THIS MAP WERE GENERATED USING THE 3' X 3' MEDIAN DATA SET.
-THE DATA DEPICTED ON THIS MAP SHOULD NOT BE USED FOR VOLUME CALCULATION PURPOSES.
-THIS SURVEY WAS PERFORMED USING REAL TIME KINEMATIC GPS FROM THE DOT NETWORK.
-THIS MAP IS CERD COMPLIANT IN ACCORDANCE WITH ER 1110-2-8160 AND EM 1110-2-6056.