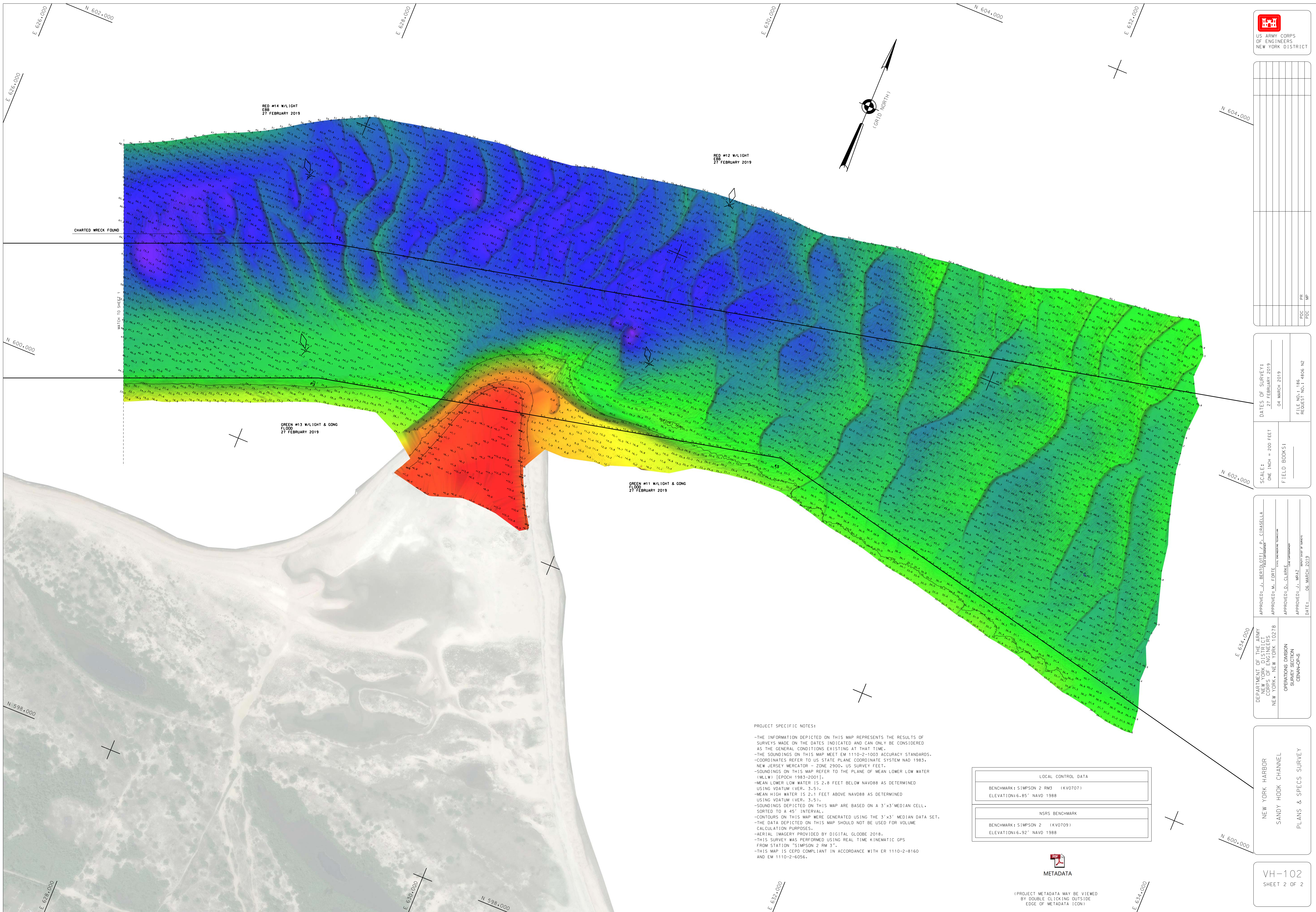






U.S. ARMY CORPS OF ENGINEERS NEW YORK DISTRICT



MATCH TO SHEET 1

RED #14 W/LIGHT  
EBB  
27 FEBRUARY 2019

RED #12 W/LIGHT  
EBB  
27 FEBRUARY 2019

GREEN #13 W/LIGHT & CONG  
FLOOD  
27 FEBRUARY 2019

GREEN #11 W/LIGHT & CONG  
FLOOD  
27 FEBRUARY 2019

CHARTED WRECK FOUND



GRID NORTH

NO.	REV.	DESCRIPTION

DATES OF SURVEY:  
\_27 FEBRUARY 2019  
\_04 MARCH 2019

SCALE:  
ONE INCH = 200 FEET  
FIELD BOOKS:

APPROVED: J. BERDOLLOTTI, P. CIRASSELLA  
DATE: 06 MARCH 2019  
APPROVED: M. EDGIE  
DATE: 06 MARCH 2019  
APPROVED: D. C. CLODGE  
DATE: 06 MARCH 2019  
APPROVED: J. BRAZ  
DATE: 06 MARCH 2019

DEPARTMENT OF THE ARMY  
U.S. ARMY CORPS OF ENGINEERS  
NEW YORK, NEW YORK 10278

OPERATIONS DIVISION  
SOUNDING SURVEY  
GENERAL OPS

NEW YORK HARBOR  
SANDY HOOK CHANNEL  
PLANS & SPECS SURVEY

VH-102  
SHEET 2 OF 2

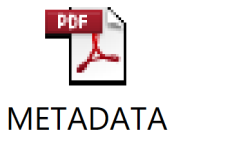
- PROJECT SPECIFIC NOTES:
- THE INFORMATION DEPICTED ON THIS MAP REPRESENTS THE RESULTS OF SURVEYS MADE ON THE DATES INDICATED AND CAN ONLY BE CONSIDERED AS THE GENERAL CONDITIONS EXISTING AT THAT TIME.
- THE SOUNDINGS ON THIS MAP MEET EM 1110-2-1003 ACCURACY STANDARDS.
- COORDINATES REFER TO US STATE PLANE COORDINATE SYSTEM NAD 1983, NEW JERSEY MERCATOR - ZONE 2900, US SURVEY FEET.
- SOUNDINGS ON THIS MAP REFER TO THE PLANE OF MEAN LOWER LOW WATER (MLLW) [EPOCH 1983-2001].
- MEAN LOWER LOW WATER IS 2.8 FEET BELOW NAVD88 AS DETERMINED USING VDATUM (VER. 3.5).
- MEAN HIGH WATER IS 2.1 FEET ABOVE NAVD88 AS DETERMINED USING VDATUM (VER. 3.5).
- SOUNDINGS DEPICTED ON THIS MAP ARE BASED ON A 3'x3' MEDIAN CELL, SORTED TO A 45' INTERVAL.
- CONTOURS ON THIS MAP WERE GENERATED USING THE 3'x3' MEDIAN DATA SET.
- THE DATA DEPICTED ON THIS MAP SHOULD NOT BE USED FOR VOLUME CALCULATION PURPOSES.
- AERIAL IMAGERY PROVIDED BY DIGITAL GLOBE 2018.
- THIS SURVEY WAS PERFORMED USING REAL TIME KINEMATIC GPS FROM STATION "SIMPSON 2 RM 3".
- THIS MAP IS CEPD COMPLIANT IN ACCORDANCE WITH ER 1110-2-8160 AND EM 1110-2-6056.

LOCAL CONTROL DATA

BENCHMARK: SIMPSON 2 RM3 (KV0707)
ELEVATION: 6.85' NAVD 1988

NSRS BENCHMARK

BENCHMARK: SIMPSON 2 (KV0709)
ELEVATION: 6.92' NAVD 1988



METADATA

(PROJECT METADATA MAY BE VIEWED BY DOUBLE CLICKING OUTSIDE EDGE OF METADATA ICON)