

DATE OF SURVEY:	17-19 NOVEMBER 2020
SCALE:	ONE INCH = 100 FEET
FIELD BOOKS:	1083
OPERATIONS DIVISION	NEW YORK DISTRICT
SECTION	NEW YORK DISTRICT
DATE:	25 NOVEMBER 2020

APPROVED:	J. BEZIO, DTIC, N. VITOLO
APPROVED:	M. EDGIE
APPROVED:	P. BRADY
APPROVED:	J. WRAZ

DEPARTMENT OF THE ARMY	NEW YORK DISTRICT
CORPS OF ENGINEERS	NEW YORK DISTRICT
OPERATIONS DIVISION	NEW YORK DISTRICT
SECTION	NEW YORK DISTRICT

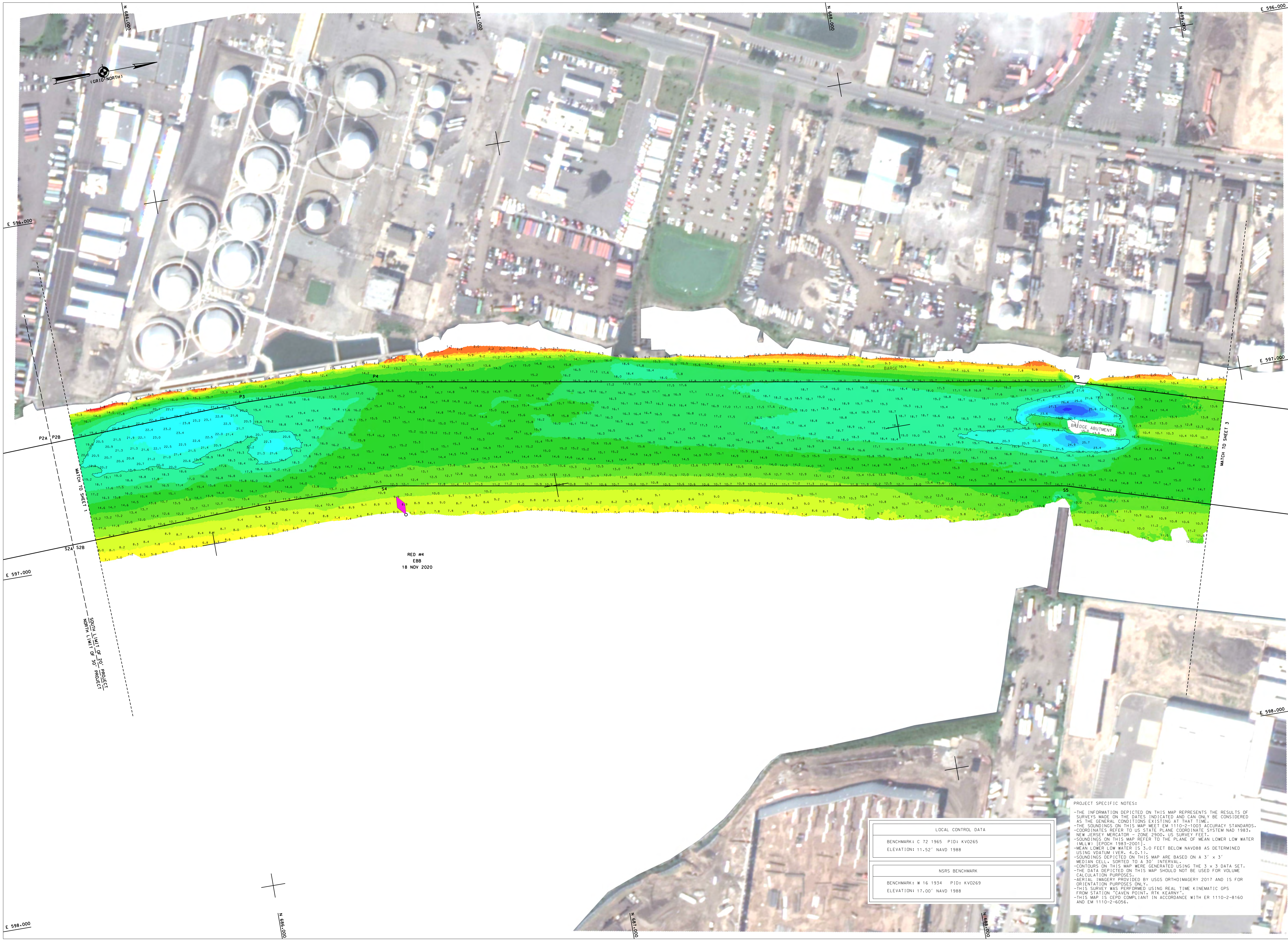
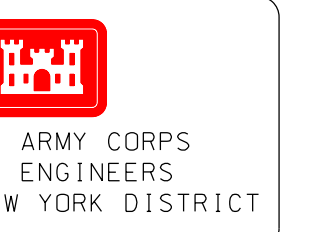
NEWARK BAY, HACKENSACK & PASSAIC RIVERS, N. J.	CONDITION SURVEY
VH-101	
SHEET 1 OF 3	

LOCAL CONTROL DATA	
BENCHMARK: C 72 1965	PID: KVD265
ELEVATION: 11.52' NAVD 1988	

NSRS BENCHMARK	
BENCHMARK: W 16 1934	PID: KVD269
ELEVATION: 17.00' NAVD 1988	

PROJECT SPECIFIC NOTES:

- THE INFORMATION DEPICTED ON THIS MAP REPRESENTS THE RESULTS OF SURVEYS MADE ON THE DATES INDICATED AND CAN ONLY BE CONSIDERED AS THE GENERAL CONDITIONS EXISTING AT THAT TIME.
- THE SOUNDINGS ON THIS MAP MEET EM 1110-2-1003 ACCURACY STANDARDS.
- COORDINATES REFER TO US STATE PLANE COORDINATE SYSTEM NAD 1983, NEW JERSEY MERCATOR - ZONE 2000, US SURVEY FEET.
- SOUNDINGS ON THIS MAP REFER TO THE PLANE OF MEAN LOWER LOW WATER (MLLW) [EPOCH 1985-2011].
- MEAN LOWER LOW WATER IS 3.0 FEET BELOW NAVD88 AS DETERMINED USING VDATUM (VER. 4.0.1).
- SOUNDINGS DEPICTED ON THIS MAP ARE BASED ON A 3' x 3' MEDIAN CELL, SORTED TO A 30' INTERVAL.
- CONTOURS ON THIS MAP WERE GENERATED USING THE 3' x 3' DATA SET.
- THE DATA DEPICTED ON THIS MAP SHOULD NOT BE USED FOR VOLUME CALCULATION PURPOSES.
- AERIAL IMAGERY PROVIDED BY USGS ORTHOIMAGERY 2017 AND IS FOR ORIENTATION PURPOSES ONLY.
- THIS SURVEY WAS PERFORMED USING REAL TIME KINEMATIC GPS FROM STATION "CAVEN POINT, RTK KEARNEY".
- THIS MAP IS CEPD COMPLIANT IN ACCORDANCE WITH ER 1110-2-8160 AND EM 1110-2-6056.



LOCAL CONTROL DATA	
BENCHMARK: C 72 1965	PID: KV0265
ELEVATION: 11.52' NAVD 1988	
NRSR BENCHMARK	
BENCHMARK: W 16 1934	PID: KV0269
ELEVATION: 17.00' NAVD 1988	

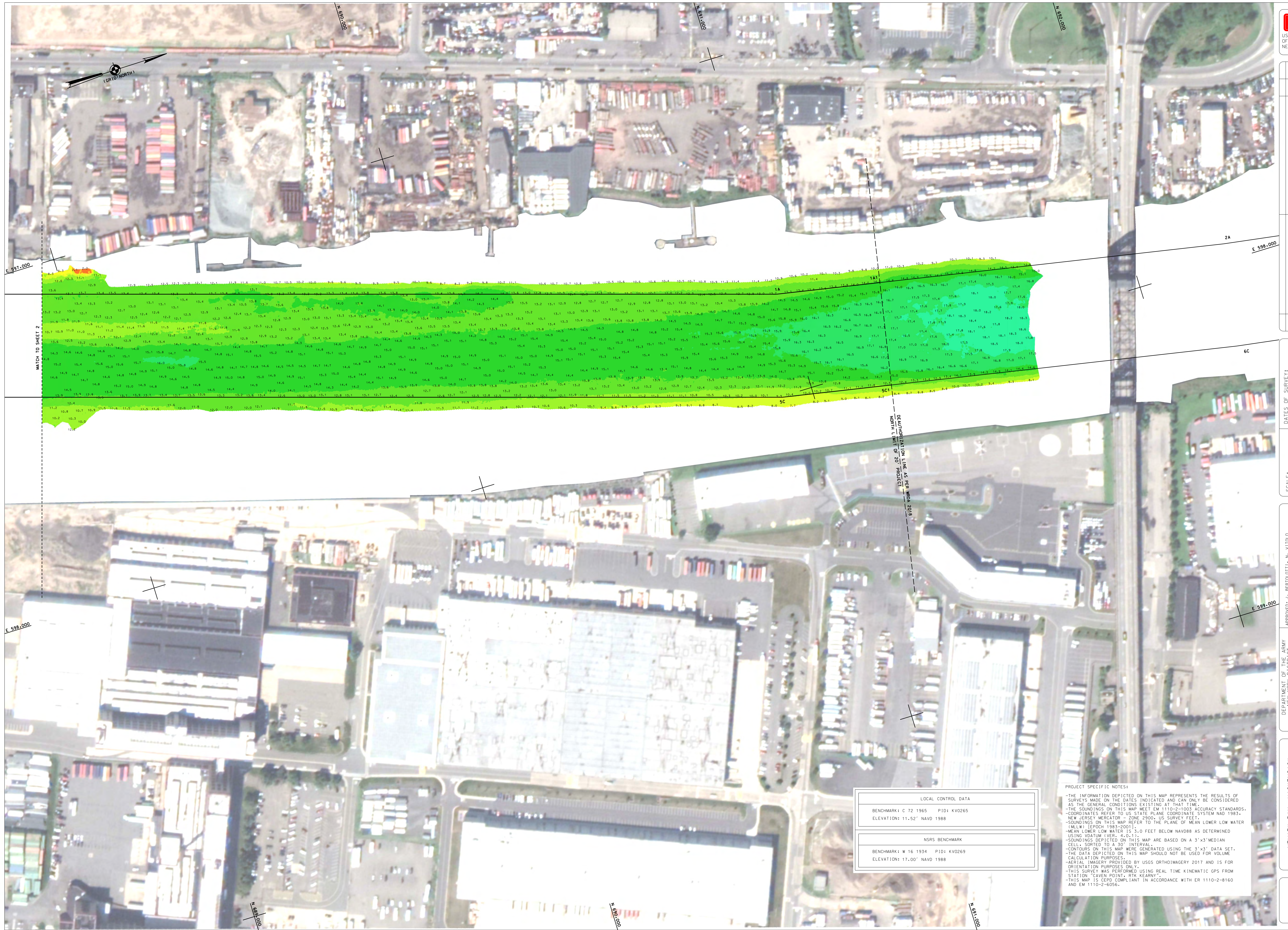
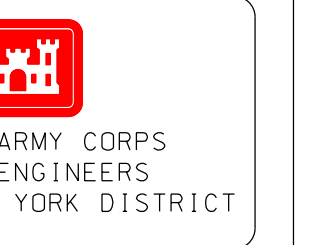
PROJECT SPECIFIC NOTES:
 -THE INFORMATION DEPICTED ON THIS MAP REPRESENTS THE RESULTS OF SURVEYS MADE ON THE DATES INDICATED AND CAN ONLY BE CONSIDERED AS THE GENERAL CONDITIONS EXISTING AT THAT TIME.
 -THE SOUNDINGS ON THIS MAP MEET EM 1110-2-1005 ACCURACY STANDARDS.
 -COORDINATES REFER TO US STATE PLANE COORDINATE SYSTEM NAD 1983, NEW JERSEY MERCATOR - ZONE 2300, US SURVEY FEET.
 -SOUNDINGS ON THIS MAP REFER TO THE PLANE OF MEAN LOWER LOW WATER (MLLW) [EPOCH 1983-2001].
 -MEAN LOWER LOW WATER IS 3.0 FEET BELOW NAVD88 AS DETERMINED USING VDATUM (VER: 4.0.1).
 -SOUNDINGS DEPICTED ON THIS MAP ARE BASED ON A 3' x 3' MEDIAN CELL, SORTED TO A 30' INTERVAL.
 -CONTOURS ON THIS MAP WERE GENERATED USING THE 3 x 3 DATA SET.
 -AERIAL IMAGERY PROVIDED BY USGS ORTHOIMAGERY 2017 AND IS FOR CALCULATION PURPOSES ONLY.
 -THIS SURVEY WAS PERFORMED USING REAL TIME KINEMATIC GPS FROM STATION "CAVEN POINT, RTK KEARNY".
 -THIS MAP IS CEPI COMPLIANT IN ACCORDANCE WITH ER 1110-2-8160 AND EM 1110-2-6058.

DATE OF SURVEY:	17-19 NOVEMBER 2020
SCALE:	ONE INCH = 100 FEET
FIELD BOOKS:	1083
REVISIONS:	
DATE:	
BY:	JHS
APP'D:	JHS
NO. / FILE NO.:	5007/AL/NI

APPROVED:	J. BEETOLDT, Lt. COL., N. Y. DIST. DISTRICT ENGINEER
APPROVED:	M. EDGIE, Lt. COL., DISTRICT ENGINEER
APPROVED:	P. BERGQUIST, Lt. COL., DISTRICT ENGINEER
APPROVED:	J. WRAZ, Lt. COL., DISTRICT ENGINEER
DATE:	25 NOVEMBER 2020
DEPARTMENT OF THE ARMY	
CORPS OF ENGINEERS	
NEW YORK, NEW YORK 10278	
OPERATIONS DIVISION	
SECTION	GENERAL OPS

NEWARK BAY, HACKENSACK & PASSAIC RIVERS, N. J.
PASSAIC RIVER
 CONDITION SURVEY

VH-102
 SHEET 2 OF 3



DATE	DESCRIPTION

DATES OF SURVEY: 17-19, NOVEMBER 2020	REG. NO./FILE NO.: 5007/AL/NI
SCALE: ONE INCH = 100 FEET	FIELD BOOKS: 1063

DEPARTMENT OF THE ARMY U.S. ARMY CORPS OF ENGINEERS NEW YORK DISTRICT	OPERATIONS DIVISION CEMEX-OPS
APPROVED: J. BEZDOL, J. N. VITOLO DATE: 25 NOVEMBER 2020	APPROVED: P. BERGHOFF DATE: 25 NOVEMBER 2020

LOCAL CONTROL DATA BENCHMARK: C 72 1965 PID: KV0265 ELEVATION: 11.52' NAVD 1988
NSRS BENCHMARK BENCHMARK: W 16 1934 PID: KV0269 ELEVATION: 17.00' NAVD 1988

PROJECT SPECIFIC NOTES:

- THE INFORMATION DEPICTED ON THIS MAP REPRESENTS THE RESULTS OF SURVEYS MADE ON THE DATES INDICATED AND CAN ONLY BE CONSIDERED AS THE GENERAL CONDITIONS EXISTING AT THAT TIME.
- THE SOUNDINGS ON THIS MAP MEET EM 1110-2-1003 ACCURACY STANDARDS.
- COORDINATES REFER TO US STATE PLANE COORDINATE SYSTEM NAD 1983, NEW JERSEY MERIDIAN - ZONE 2900, US SURVEY FEET.
- SOUNDINGS ON THIS MAP REFER TO THE PLANE OF MEAN LOWER LOW WATER (MLLW) [EPOCH 1985-2011].
- MEAN LOWER LOW WATER IS 3.0 FEET BELOW NAVD88 AS DETERMINED USING VDATUM (VER. 4.0.11).
- SOUNDINGS DEPICTED ON THIS MAP ARE BASED ON A 3'X3' MEDIAN CELL, SORTED TO A 30' INTERVAL.
- CONTOURS ON THIS MAP WERE GENERATED USING REAL TIME KINEMATIC GPS FROM ORIENTATION PURPOSES ONLY.
- AERIAL IMAGERY PROVIDED BY USGS ORTHOIMAGERY 2017 AND IS FOR ORIENTATION PURPOSES ONLY.
- THIS SURVEY WAS PERFORMED USING REAL TIME KINEMATIC GPS FROM STATION "CAVEN POINT, RTK KEARNEY".
- THIS MAP IS CEPD COMPLIANT IN ACCORDANCE WITH EM 1110-2-8160 AND EM 1110-2-6056.

NEWARK BAY, HACKENSACK & PASSAIC RIVERS, N.J.
PASSAIC RIVER
CONDITION SURVEY

VH-103
 SHEET 3 OF 3