[illegible]

DATES OF SURVEY:
 26-27-30 MARCH 2020
 9 APRIL 2020

REQ. NO./FILE NO:4937/N1

SCALE:
ONE INCH = 50 FEET

FIELD BOOKS:
N/A

APPROVED: J. BERTOLUCCI, M. APPELD
FIELD PARTICIPANTS

APPROVED: M. FORTE
CIVIL ENGINEERING TECHNICIAN

APPROVED: P. SHAOUR
LOCAL COORDINATOR

APPROVED: J. MRAZ
SENIOR CHIEF OF PARTY

DATE: 13 APRIL 2020

DEPARTMENT OF THE ARMY
NEW YORK DISTRICT
CORPS OF ENGINEERS
NEW YORK, NEW YORK 10278

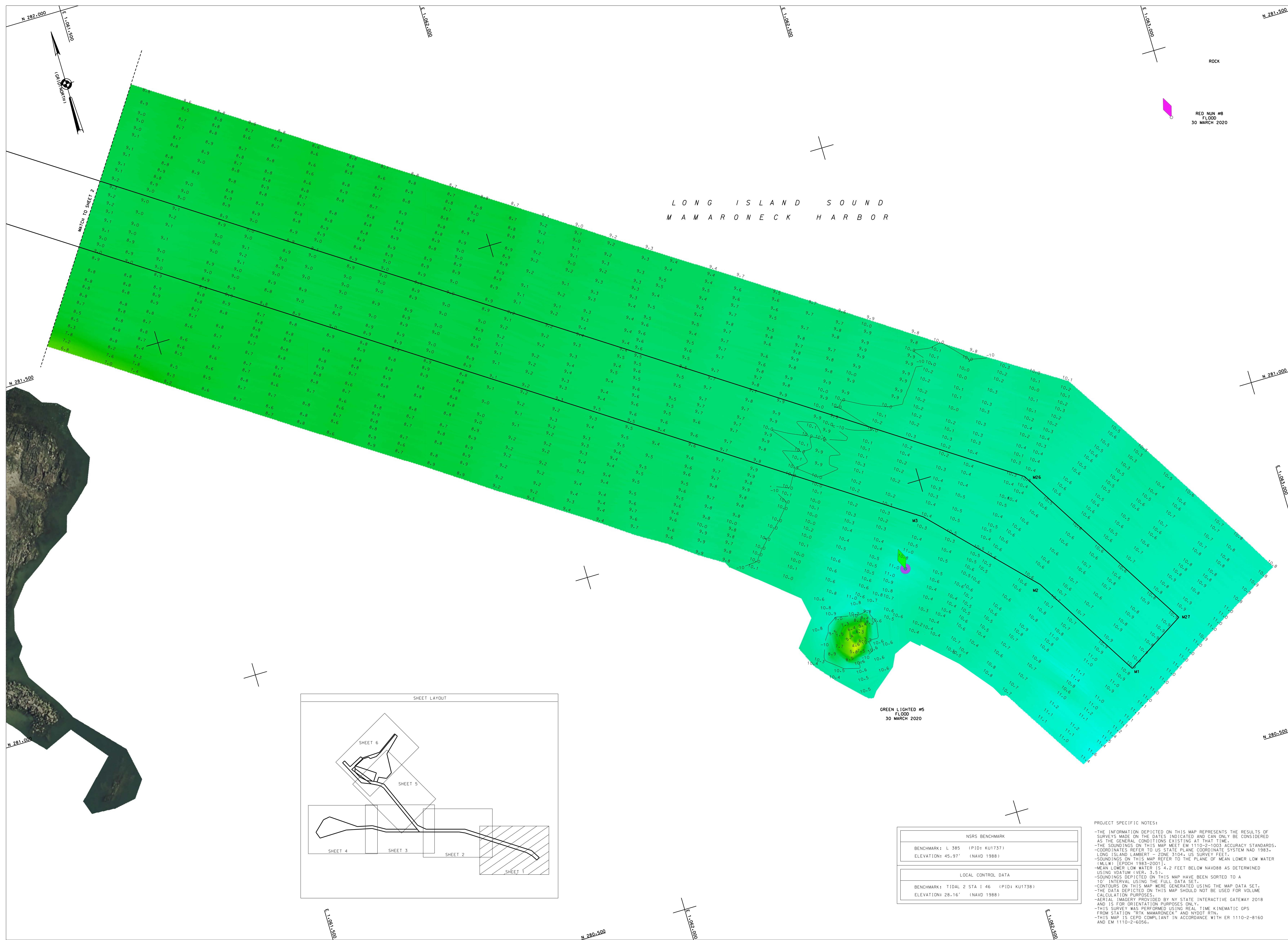
OPERATIONS DIVISION
SURVEY SECTION
CENAN-DP-S

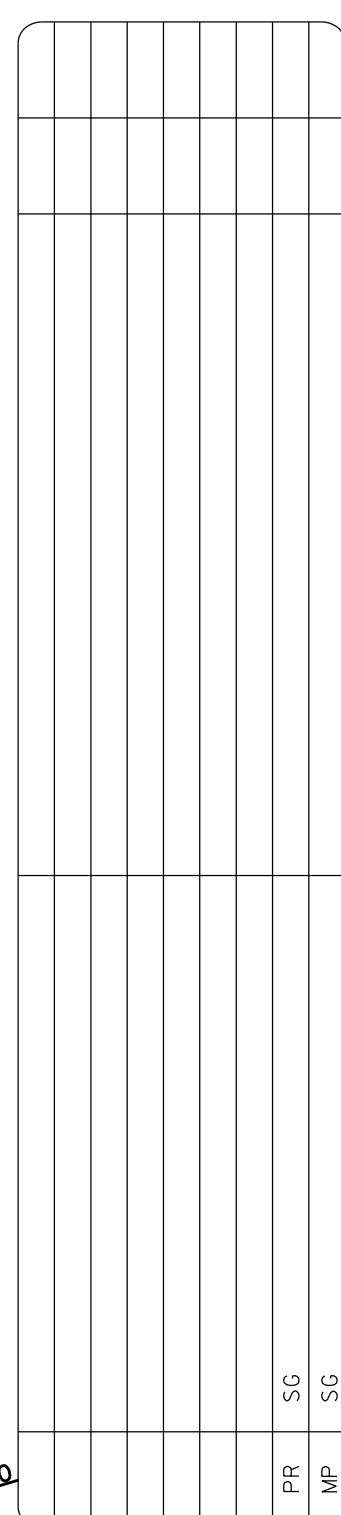
MAMARONECK HARBOR, NEW YORK
CONDITION SURVEY

VH-101

SHEET 1 OF 6

REQ. NO: / FILE NO: 4937/N1





SCALE: ONE INCH = 50 FEET	DATES OF SURVEY: 26-27, 30 MARCH 2020 9 APRIL 2020
FIELD BOOKS: N/A	REQ. NO./FILE NO.:4937/M1

DEPARTMENT OF THE ARMY
NEW YORK DISTRICT
CORPS OF ENGINEERS
NEW YORK, NEW YORK 10278

APPROVED: J. J. BERTOLOTTI, Lt. Col., APPELLED
FOR PROMOTION

APPROVED: M. FORTE, CIVIL ENGINEERING SECTION

APPROVED: P. J. BHADOUR, CIVIL ENGINEER

APPROVED: J. J. MORAN, BATTAL CHIEF OF DISTRICT

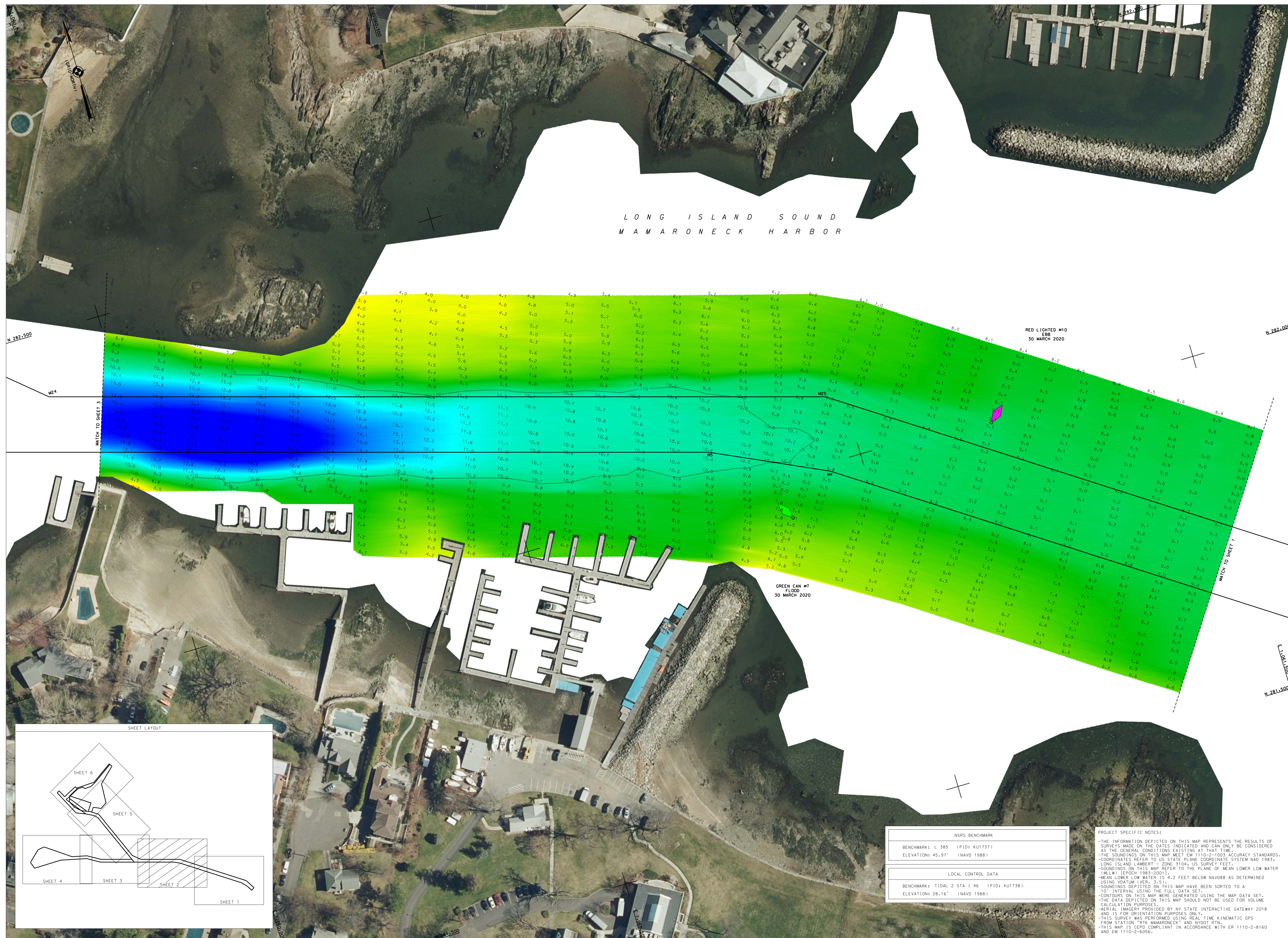
DATE: 13 APRIL 2020

MAMARONECK HARBOR, NEW YORK

VH-102

SHEET 2 OF 6

REQ. NO: / FILE NO: 4937/N1

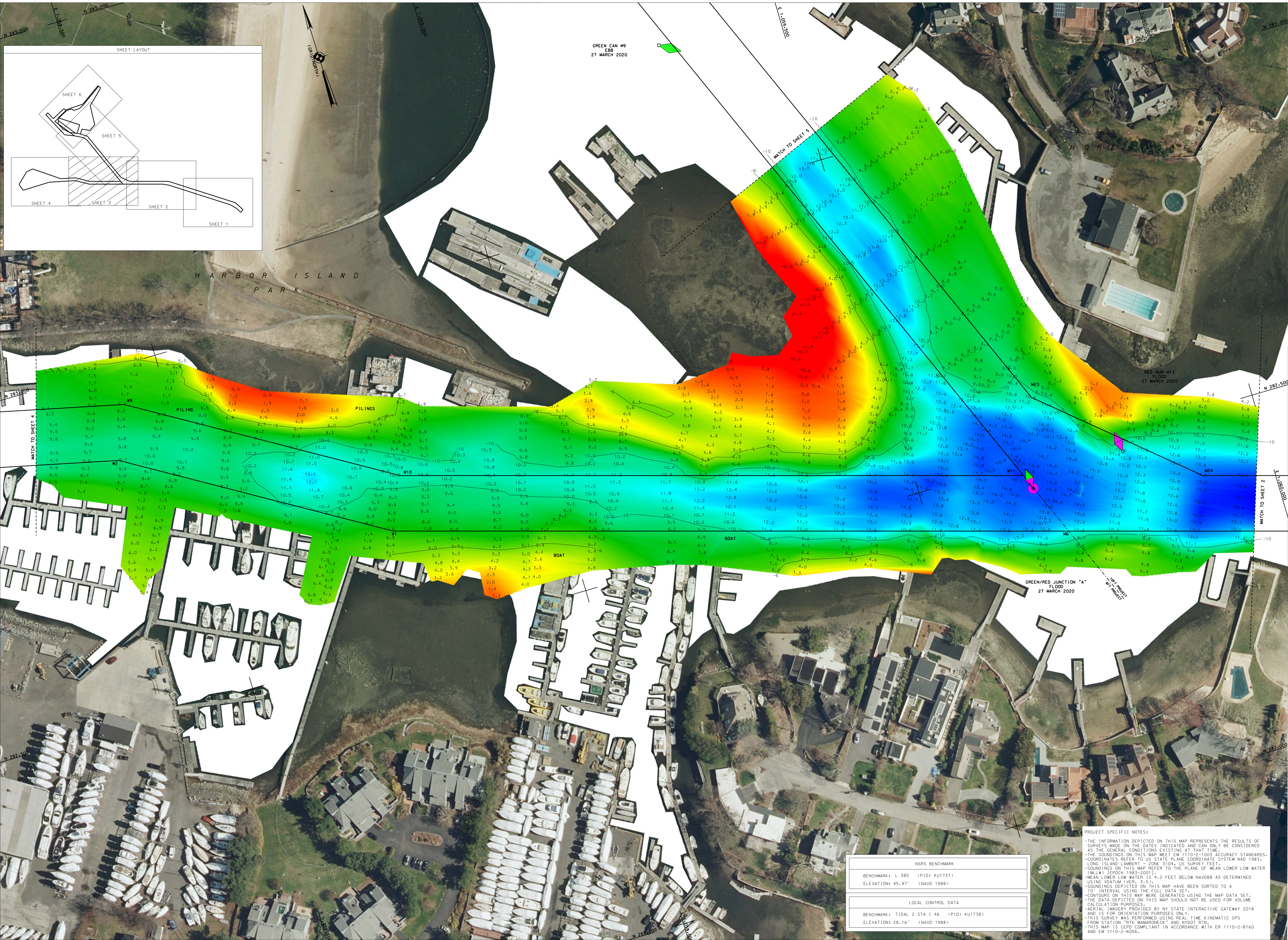


NSRS BENCHMARK	
BENCHMARK: L 385	(PID: KU1737)
ELEVATION: 45.97'	(NAVD 1988)

LOCAL CONTROL DATA	
BENCHMARK: TIDAL 2 STA 1 46	(PID: KU1738)
ELEVATION: 28.16'	(NAVD 1988)

PROJECT SPECIFIC NOTES:

- THE INFORMATION DEPICTED ON THIS MAP REPRESENTS THE RESULTS OF SURVEYS MADE ON THE DATES INDICATED AND CAN ONLY BE CONSIDERED AS THE GENERAL CONDITIONS EXISTING AT THAT TIME.
- COORDINATES REFER TO US STATE PLANE COORDINATE SYSTEM NAD 83.
- SOUNDINGS ON THIS MAP REFER TO THE PLANE OF MEAN LOWER LOW WATER (MLLW) [FOOT 1983-2010].
- SOUNDINGS DEPICTED ON THIS MAP HAVE BEEN SORTED TO A 10' INTERVAL USING THE FULL DATA SET.
- CONTOURS OF THIS MAP WERE GENERATED USING THE MAP DATA SET.
- THIS DATA DEPICTED ON THIS MAP SHOULD NOT BE USED FOR VOLUME CALCULATION PURPOSES.
- THIS MAP WAS PREPARED BY NY STATE INTERACTIVE GATEWAY 2018 AND IS FOR ORIENTATION PURPOSES ONLY.
- THIS SURVEY WAS CONDUCTED USING REAL TIME KINEMATIC GPS FROM STATION "RPT MAMARONECK" AND NYDOT RTN.
- THIS MAP IS BEING COMPLAINT IN ACCORDANCE WITH ER 1110-2-8160 AND EN 1110-2-600.

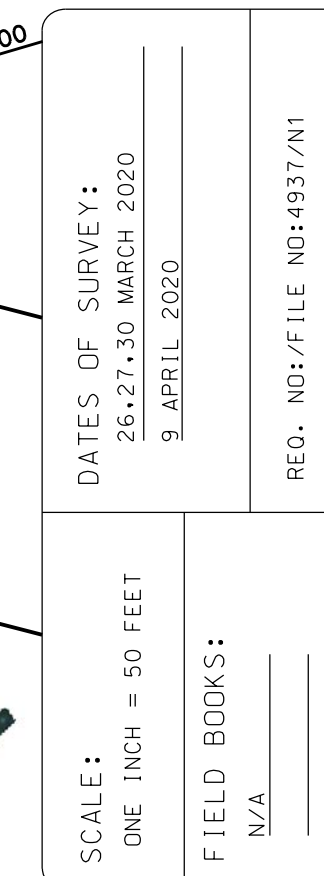
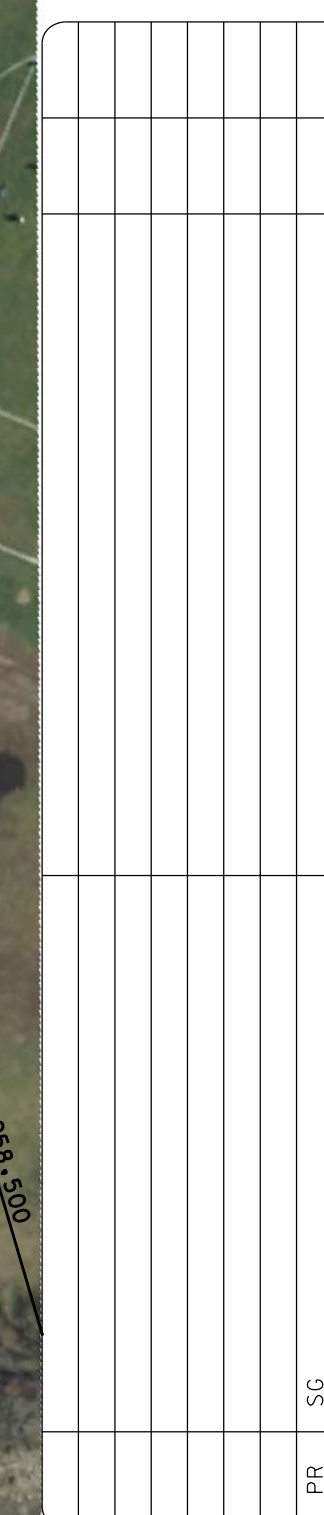


U.S. ARMY
CORPS OF ENGINEERS
NEW YORK DISTRICT

DATES OF SURVEY: 26-27-30 MARCH 2020 9 APRIL 2020		SCALE: ONE INCH = 50 FEET		FIELD BOOKS: N/A	
REQ. NO: FILE NO: 437/N1		DATE: 13 APRIL 2020		PROJECT: MAMARONECK HARBOR - NEW YORK	
APPROVED: J. BEETO, OTTIL, M. APPELO CORPS OF ENGINEERS NEW YORK DISTRICT		APPROVED: P. BRADY CORPS OF ENGINEERS NEW YORK DISTRICT		APPROVED: J. MRAZ CORPS OF ENGINEERS NEW YORK DISTRICT	
OPERATIONS DIVISION SACRAMENTO		OPERATIONS DIVISION SACRAMENTO		OPERATIONS DIVISION SACRAMENTO	
VH-103		SHEET 3 OF 6		CONDITION SURVEY	

PROJECT SPECIFIC NOTES:
- THE INFORMATION DEPICTED ON THIS MAP REPRESENTS THE RESULTS OF SURVEYS MADE ON THE DATES INDICATED AND CAN ONLY BE CONSIDERED AS THE GENERAL CONDITIONS EXISTING AT THAT TIME.
- THE SOUNDINGS ON THIS MAP MEET ME 1110-2-1003 ACCURACY STANDARDS. COORDINATES REFER TO US STATE PLANE COORDINATE SYSTEM NAD 83, LONG ISLAND LAMBERT - ZONE 1804, US SURVEY FEET.
- SOUNDINGS ON THIS MAP REFER TO THE PLANE OF MEAN LOWER LOW WATER (MLLW) (EPOCH 1983-2001).
- MEAN LOWER LOW WATER IS 4.2 FEET BELOW NAVD88 AS DETERMINED USING VORTAM VER. 3.5.2.
- SOUNDINGS DEPICTED ON THIS MAP HAVE BEEN SORTED TO A 10' INTERVAL USING THE FULL DATA SET.
- CONTOURS ON THIS MAP WERE GENERATED USING THE MAP DATA SET. THE DATA DEPICTED ON THIS MAP SHOULD NOT BE USED FOR VOLUME CALCULATION PURPOSES.
- AERIAL IMAGERY PROVIDED BY NY STATE INTERACTIVE GATEWAY 2018 AND IS FOR ORIENTATION PURPOSES ONLY.
- THIS SURVEY WAS PERFORMED USING REAL TIME KINEMATIC GPS FROM STATION "RTK MAMARONECK" AND NYDOT RTN.
- THIS MAP IS CEPO COMPLIANT IN ACCORDANCE WITH ER 1110-2-8160 AND EM 1110-2-6056.

NSRS BENCHMARK	
BENCHMARK: L 385 (PID: KU1737)	
ELEVATION: 45.91' (NAVD 1988)	
LOCAL CONTROL DATA	
BENCHMARK: TIDAL 2 STA 1 46 (PID: KU1738)	
ELEVATION: 28.16' (NAVD 1988)	



APPROVED: J. BERTOLOTI, M. APPELO
FIELD ENGINEER

APPROVED: M. FORTE
CIVIL ENGINEING TECHNICIAN

APPROVED: P. BHADUR
LOCAL CHAIRSPERSON

APPROVED: J. MRAZ
SENIOR CHIEF OF STAFF*

DEPARTMENT OF THE ARMY
NEW YORK DISTRICT
CORPS OF ENGINEERS
NEW YORK, NEW YORK 10278

OPERATIONS DIVISION
SURVEY SECTION
CENAN-OP-5

MAMARONECK HARBOR, NEW YORK
CONDITION SURVEY

VH-104

SHEET 4 OF

PROJECT SPECIFIC NOTES:

- THE INFORMATION DEPICTED ON THIS MAP REPRESENTS THE RESULTS OF SURVEYS MADE ON THE DATES INDICATED AND CAN ONLY BE CONSIDERED AS THE GENERAL CONDITIONS EXISTING AT THAT TIME.
- THE INFORMATION ON THIS MAP DOES NOT MEET ANY SURVEY STANDARDS.
- COORDINATES REFER TO THE STATE PLANE COORDINATE SYSTEM NAD 83.
- LONG ISLAND LAMBERT 2000 3104 US SURVEY FEET.
- THIS MAP IS A 1:25000 SCALE MAP OF MEAN LOWER LOW WATER (MLLW) (EPOCH 1983-2010).
- THE DEPTH OF THE WATER IS 2 FEET BELOW NAVD83 AS DETERMINED USING DATUM (VEH: F.53).
- THE BOUNDING COORDINATES OF THIS MAP HAVE BEEN SORTED TO 10' INTERVAL USING THE FULL DATA SET.
- CONTOURS ON THIS MAP WERE GENERATED USING THE MAP DATA SET.
- THE DATA SET IS NOT SUITABLE FOR USE IN ANY OTHER VOLUME CALCULATION PURPOSES.
- THE DATA SET IS OWNED BY NY STATE INTERACTIVE GATEWAY 2018 AND IS FOR ORIENTATION PURPOSES ONLY.
- THIS SURVEY WAS PERFORMED USING REAL TIME KINEMATIC GPS FROM STATION 1110-2-8160 AND NAVD83.
- THIS MAP IS CERO COMPLIANT IN ACCORDANCE WITH ER 1110-2-8160



SCALE: ONE INCH = 50 FEET	DATES OF SURVEY: 26-27, 30 MARCH 2020 9 APRIL 2020
FIELD BOOKS: N/A	REQ. NO./FILE NO.:4937/N1

APPROVED: J. BERTOLOTI, M. APPELO
FIELD ENGINEER

APPROVED: M. FORTE
CIVIL ENGINEERING TECHNICIAN

APPROVED: P. BHADUR
LEAD CIVIL DESIGNER

APPROVED: J. MRAZ
SENIOR CHIEF OF STAFF

DEPARTMENT OF THE ARMY
NEW YORK DISTRICT
CORPS OF ENGINEERS
NEW YORK, NEW YORK 10278

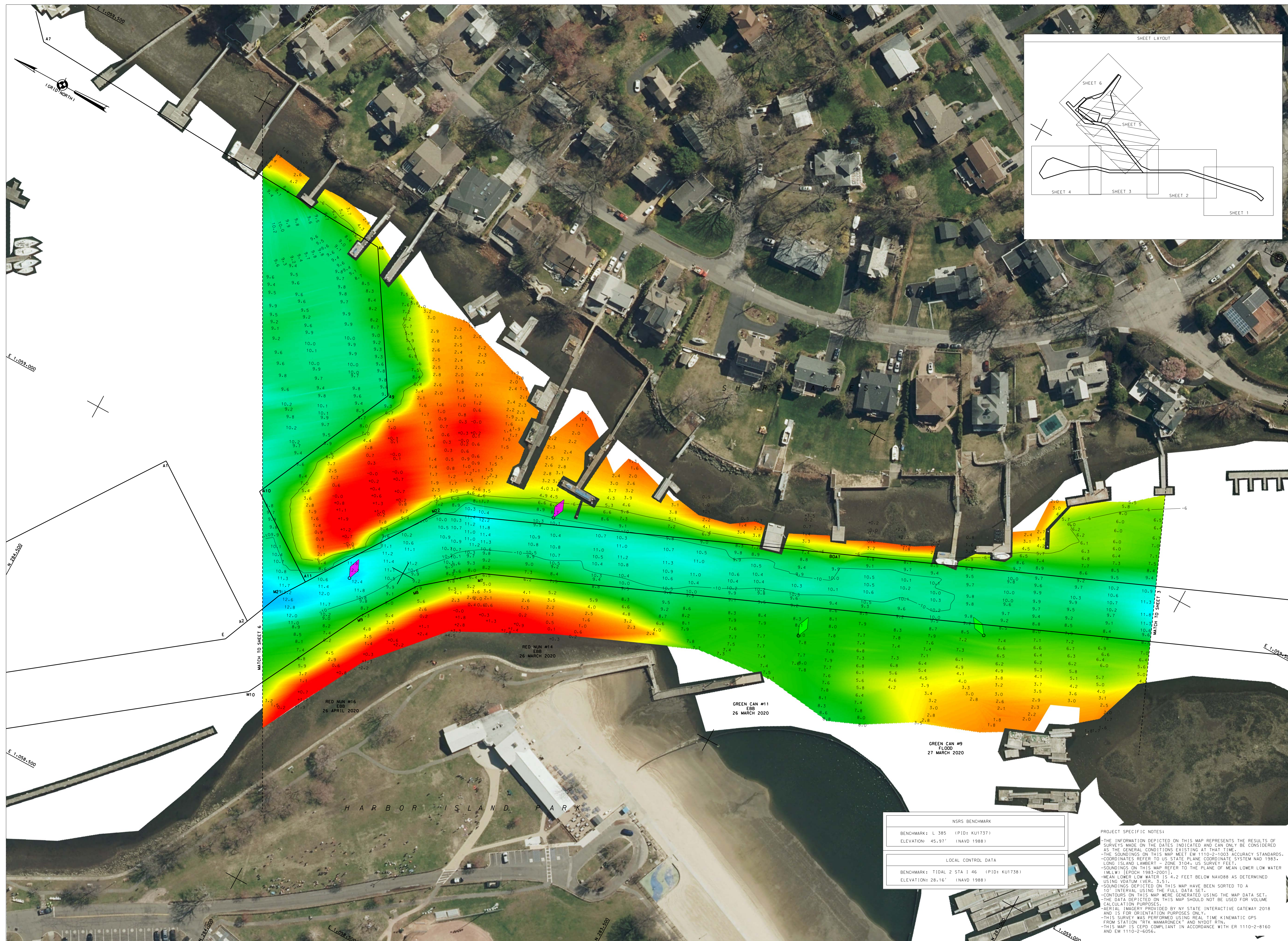
OPERATIONS DIVISION
SURVEY SECTION
CENAN-OP-5

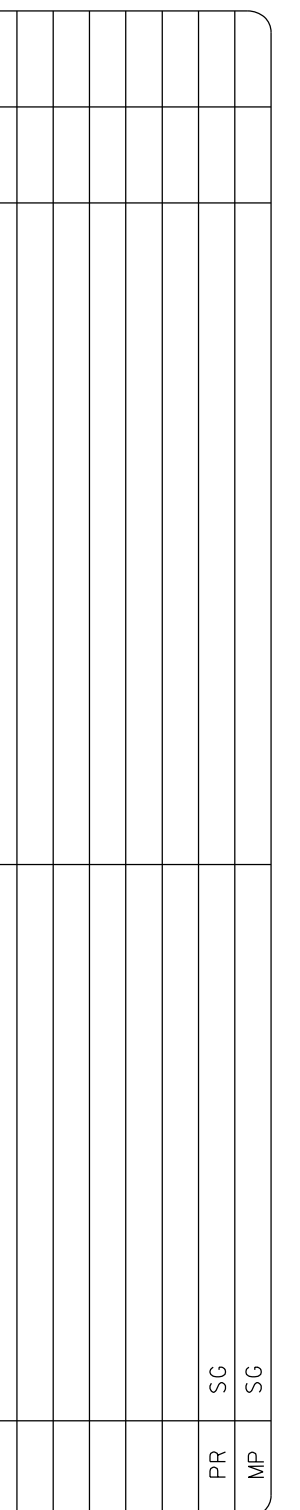
MAMARONECK HARBOR, NEW YORK
CONDITION SURVEY

VH-105

SHEET 5 OF

REQ. NO: / FILE NO:4937/N1





ONE INCH = 50 FEET

FIELD BOOKS:

NEW YORK DISTRICT
CORPS OF ENGINEERS
NEW YORK, NEW YORK 10278

OPERATIONS DIVISION

VH-106

SHEET 6 OF 6

REQ. NO: /FILE NO: 4937/N1

