

Table with 2 columns and 10 rows, likely for project metadata.

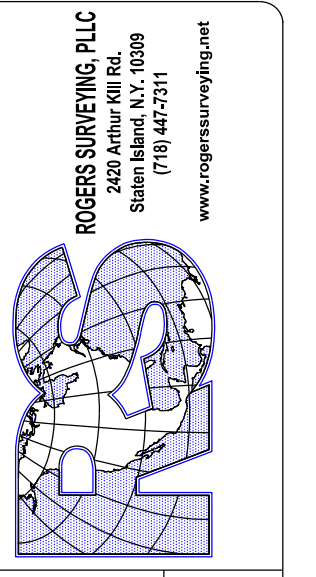


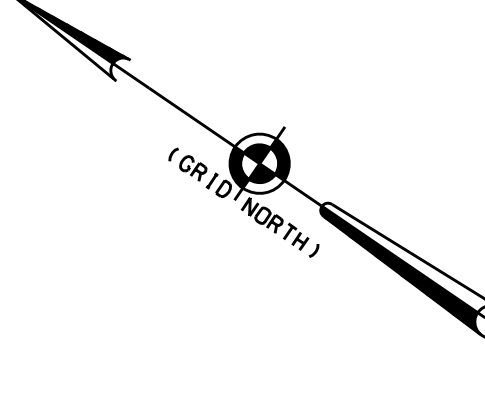
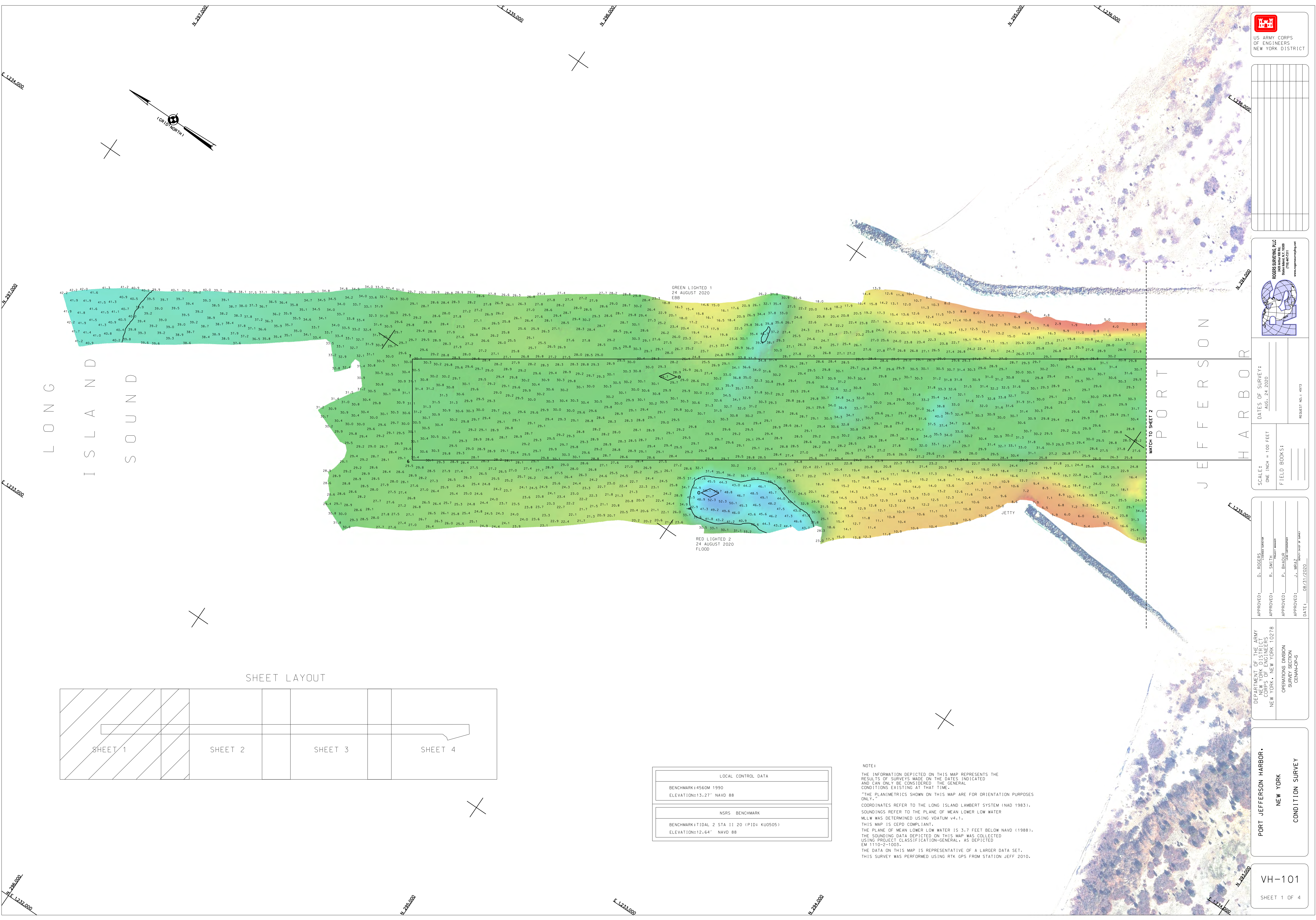
Table with 2 columns: 'DATES OF SURVEY' and 'FIELD BOOKS'. Includes scale information: 'SCALE: ONE INCH = 100 FEET'.

Table with 2 columns: 'APPROVED' and 'DATE'. Includes project name: 'PORT JEFFERSON HARBOR, NEW YORK'.

Table with 2 columns: 'DEPARTMENT OF THE ARMY' and 'OPERATIONS DIVISION'. Includes project name: 'NEW YORK CONDITION SURVEY'.

Table with 2 columns: 'PORT JEFFERSON HARBOR, NEW YORK' and 'CONDITION SURVEY'.

Table with 2 columns: 'VH-101' and 'SHEET 1 OF 4'.



LONG ISLAND SOUND

JEFFERSON HARBOR

WATCH TO SHEET 2

GREEN LIGHTED 1
24 AUGUST 2020
EBB

RED LIGHTED 2
24 AUGUST 2020
FLOOD

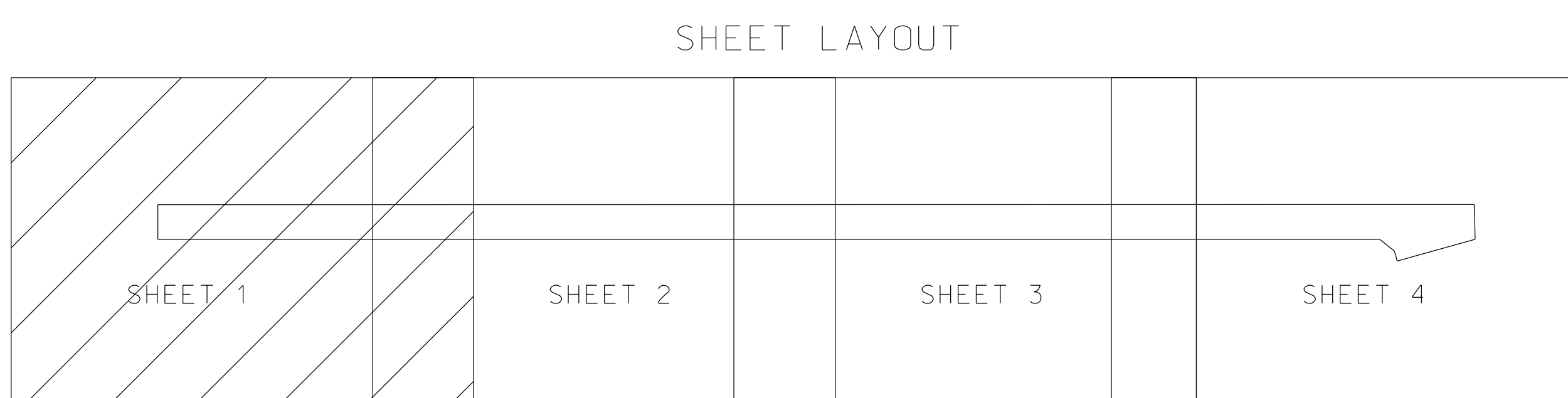
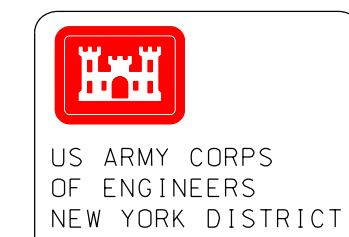
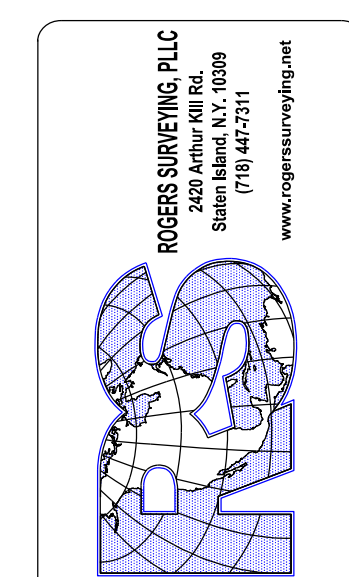


Table with 2 columns: 'LOCAL CONTROL DATA' and 'NSRS BENCHMARK'. Includes benchmark information for BENCHMARK:14560M 1990 and BENCHMARK:TIDAL 2 STA 11 20 (PID: KU0505).

NOTE:
THE INFORMATION DEPICTED ON THIS MAP REPRESENTS THE RESULTS OF SURVEYS MADE ON THE DATES INDICATED AND CAN ONLY BE CONSIDERED THE GENERAL CONDITIONS EXISTING AT THAT TIME.
"THE PLANIMETRICS SHOWN ON THIS MAP ARE FOR ORIENTATION PURPOSES ONLY."
COORDINATES REFER TO THE LONG ISLAND LAMBERT SYSTEM (NAD 1983). SOUNDINGS REFER TO THE PLANE OF MEAN LOWER LOW WATER. MLW WAS DETERMINED USING VDATUM v4.1.
THIS MAP IS CEPD COMPLIANT.
THE PLANE OF MEAN LOWER LOW WATER IS 3.7 FEET BELOW NAVD (1988).
THE SOUNDING DATA DEPICTED ON THIS MAP WAS COLLECTED USING PROJECT CLASSIFICATION-GENERAL, AS DEPICTED EM 1110-2-1003.
THE DATA ON THIS MAP IS REPRESENTATIVE OF A LARGER DATA SET.
THIS SURVEY WAS PERFORMED USING RTK GPS FROM STATION JEFF 2010.



NO.	DATE



DATES OF SURVEY:	AUG. 24 2020
SCALE:	ONE INCH = 100 FEET
FIELD BOOKS:	
REVISION NO.:	493

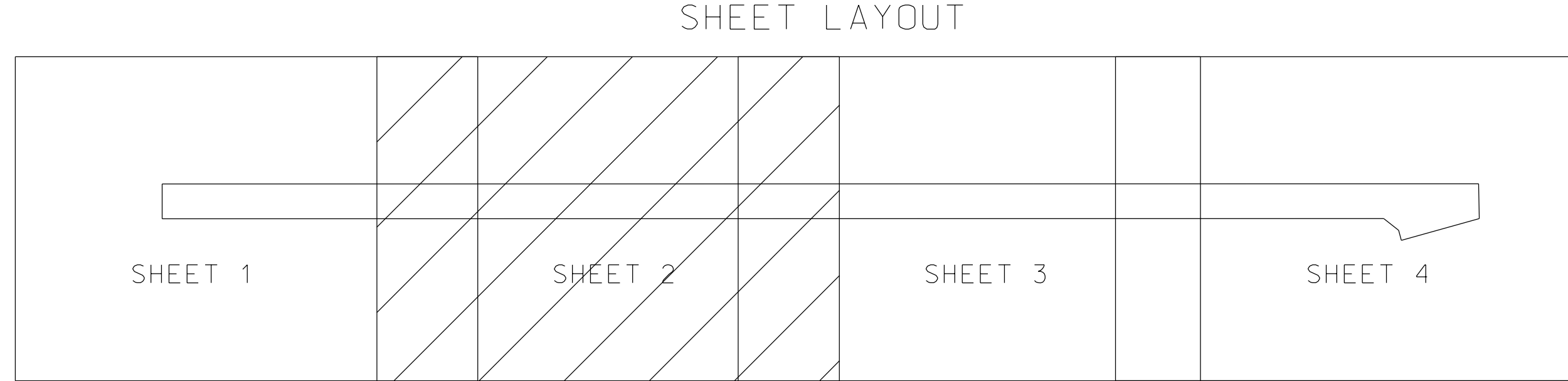
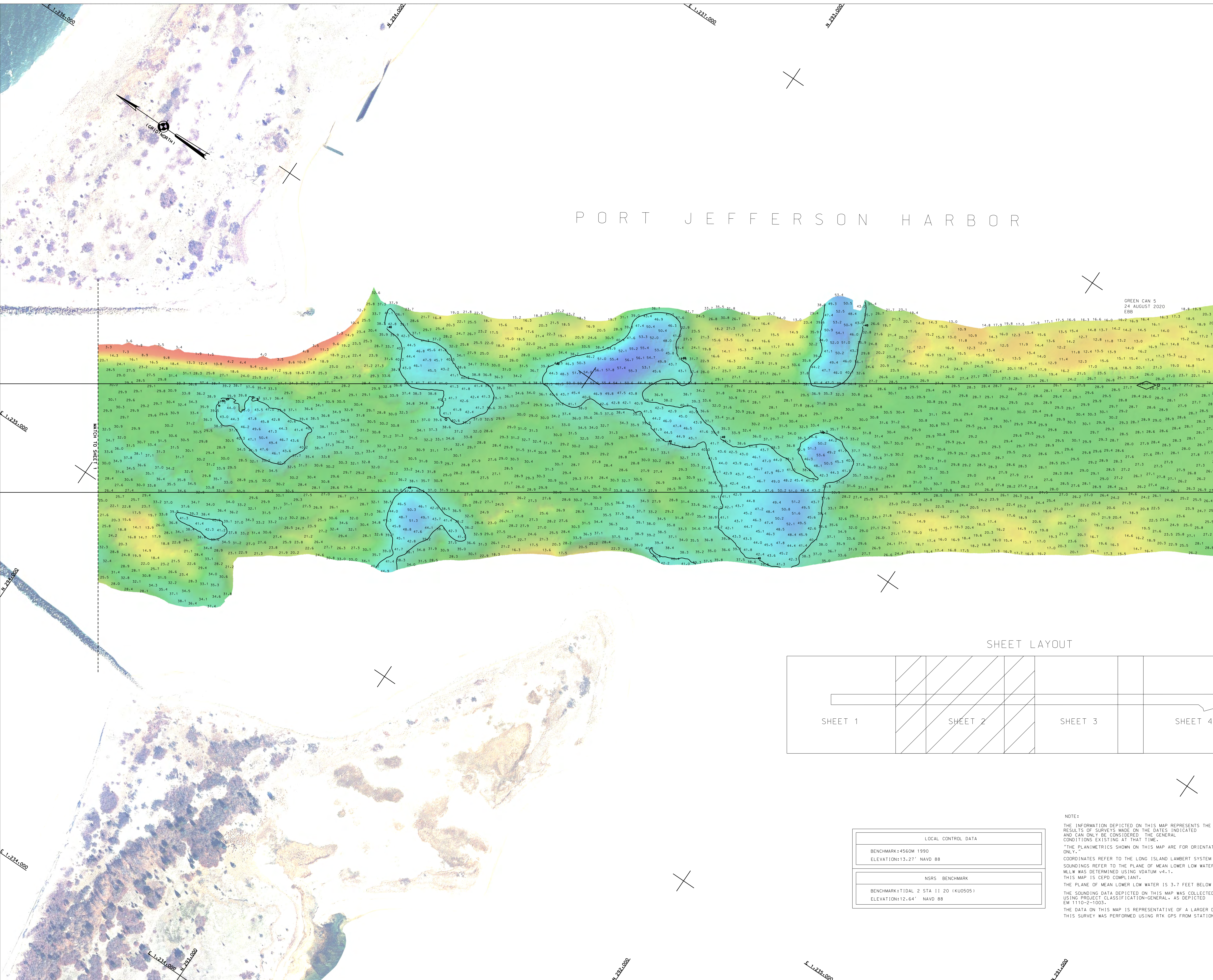
APPROVED:	D. ROGERS
APPROVED:	R. SMITH
APPROVED:	F. [unclear]
APPROVED:	J. MBAY
DATE:	08/23/2020

DEPARTMENT OF THE ARMY
 CORPS OF ENGINEERS
 NEW YORK DISTRICT
 NEW YORK 10278

OPERATIONS DIVISION
 SURVEY SECTION
 CEANS-GPS

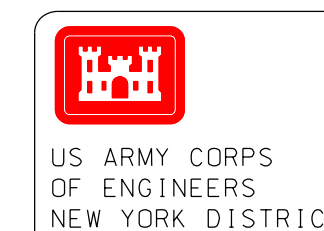
**PORT JEFFERSON HARBOR
 NEW YORK
 CONDITION SURVEY**

VH-102
 SHEET 2 OF 4



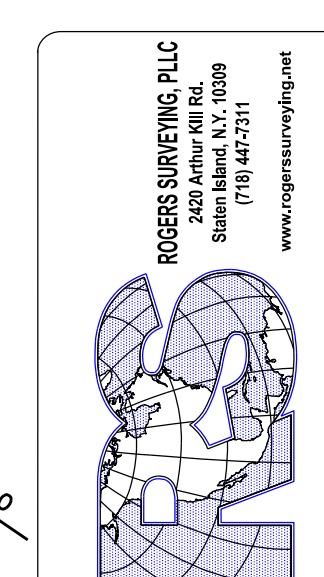
LOCAL CONTROL DATA	
BENCHMARK: 4560M 1990	ELEVATION: 13.27' NAVD 88
NSRS BENCHMARK	
BENCHMARK: TIDAL 2 STA 11 20 (KUOSODS)	ELEVATION: 12.64' NAVD 88

NOTE:
 THE INFORMATION DEPICTED ON THIS MAP REPRESENTS THE RESULTS OF SURVEYS MADE ON THE DATES INDICATED AND CAN ONLY BE CONSIDERED THE GENERAL CONDITIONS EXISTING AT THAT TIME.
 *THE PLANIMETRICS SHOWN ON THIS MAP ARE FOR ORIENTATION PURPOSES ONLY.
 COORDINATES REFER TO THE LONG ISLAND LAMBERT SYSTEM (NAD 1983)
 SOUNDINGS REFER TO THE PLANE OF MEAN LOWER LOW WATER
 MLLW WAS DETERMINED USING VDatum v4.1.
 THIS MAP IS CEIPD COMPLIANT.
 THE PLANE OF MEAN LOWER LOW WATER IS 3.7 FEET BELOW NAVD (1988)
 THE SOUNDING DATA DEPICTED ON THIS MAP WAS COLLECTED USING PROJECT CLASSIFICATION-GENERAL, AS DEPICTED EM 1150-2-1003.
 THE DATA ON THIS MAP IS REPRESENTATIVE OF A LARGER DATA SET.
 THIS SURVEY WAS PERFORMED USING RTK GPS FROM STATION JEFF 2010



US ARMY CORPS OF ENGINEERS NEW YORK DISTRICT

Table with 10 columns and 1 row, likely for project details or metadata.



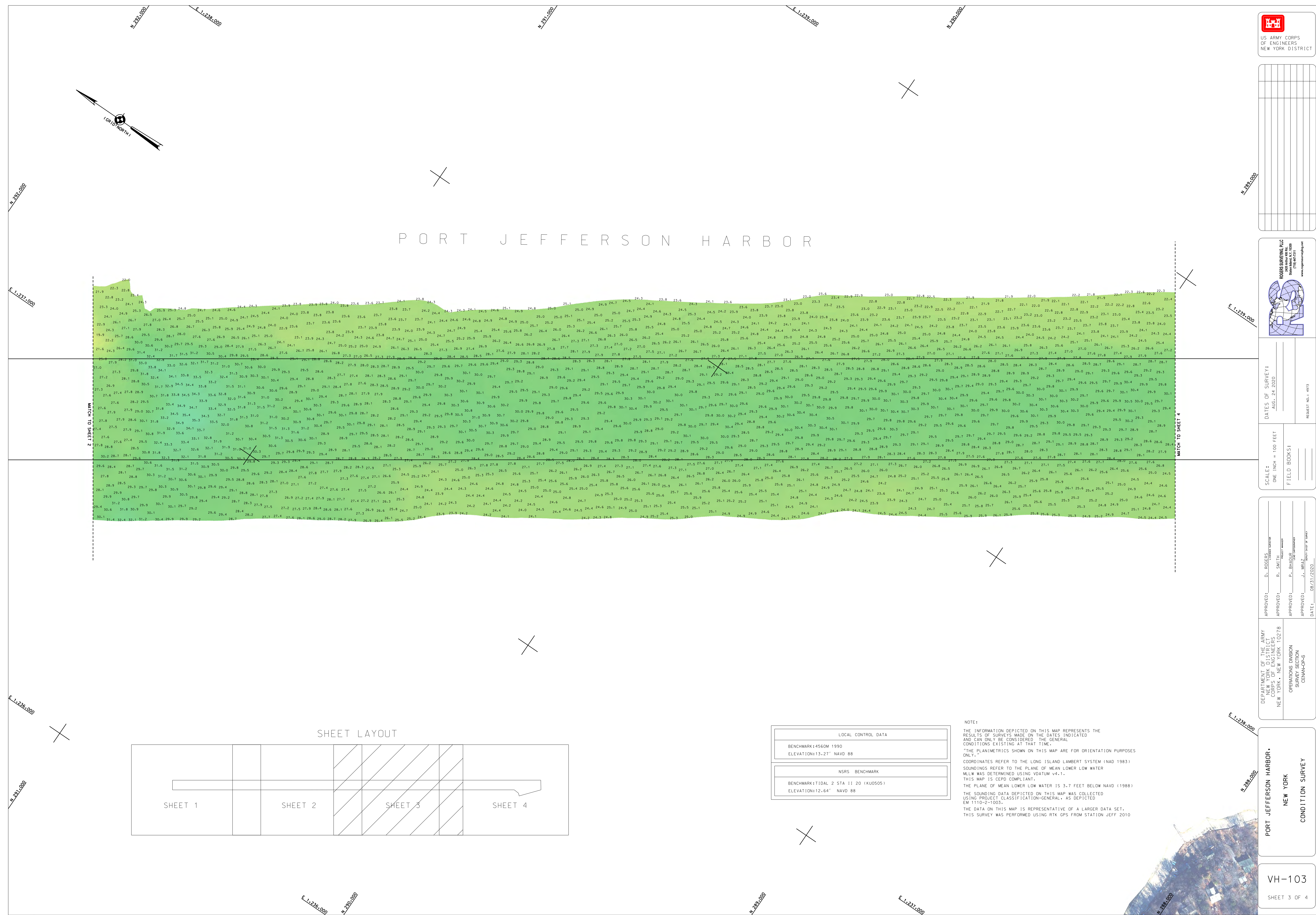
DATES OF SURVEY: AUG. 24, 2020
SCALE: ONE INCH = 100 FEET
FIELD BOOKS:

APPROVED: D. ROGERS
APPROVED: R. SMITH
APPROVED: P. [Name]
DATE: 08/21/2020

DEPARTMENT OF THE ARMY
CORPS OF ENGINEERS
NEW YORK DISTRICT
NEW YORK, NEW YORK 10278

OPERATIONS DIVISION
SURVEY SECTION
NEW YORK DISTRICT
PORT JEFFERSON HARBOR
NEW YORK
CONDITION SURVEY

VH-103
SHEET 3 OF 4

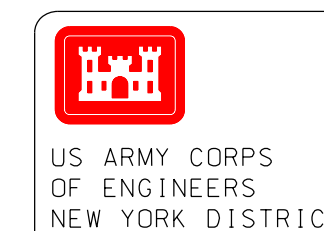


PORT JEFFERSON HARBOR



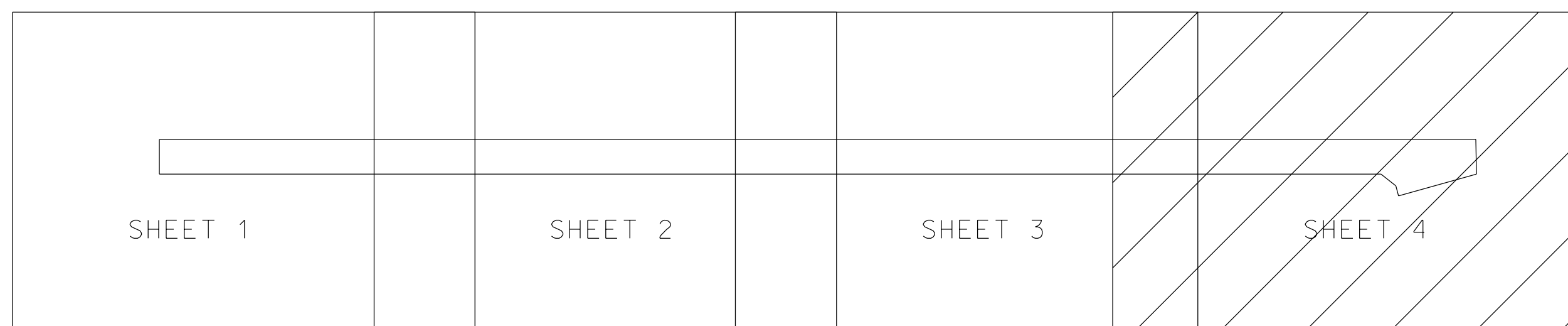
LOCAL CONTROL DATA table with two rows of benchmark information.

NOTE:
THE INFORMATION DEPICTED ON THIS MAP REPRESENTS THE RESULTS OF SURVEYS MADE ON THE DATES INDICATED AND CAN ONLY BE CONSIDERED THE GENERAL CONDITIONS EXISTING AT THAT TIME.
THE PLANIMETRICS SHOWN ON THIS MAP ARE FOR ORIENTATION PURPOSES ONLY.
COORDINATES REFER TO THE LONG ISLAND LAMBERT SYSTEM (NAD 1983)
SOUNDINGS REFER TO THE PLANE OF MEAN LOWER LOW WATER
MLLW WAS DETERMINED USING DATUM V4-1.
THIS MAP IS CEPD COMPLIANT.
THE PLANE OF MEAN LOWER LOW WATER IS 3.7 FEET BELOW NAVD (1988)
THE SOUNDING DATA DEPICTED ON THIS MAP WAS COLLECTED USING PROJECT CLASSIFICATION-GENERAL, AS DEPICTED IN 1110-2-1003.
THE DATA ON THIS MAP IS REPRESENTATIVE OF A LARGER DATA SET.
THIS SURVEY WAS PERFORMED USING RTK GPS FROM STATION JEFF 2010

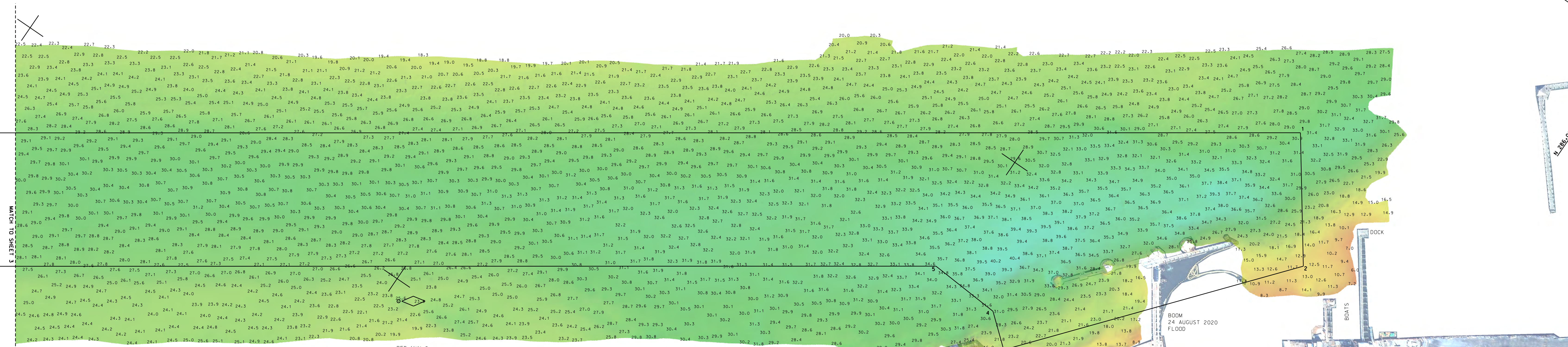


US ARMY CORPS OF ENGINEERS NEW YORK DISTRICT

SHEET LAYOUT



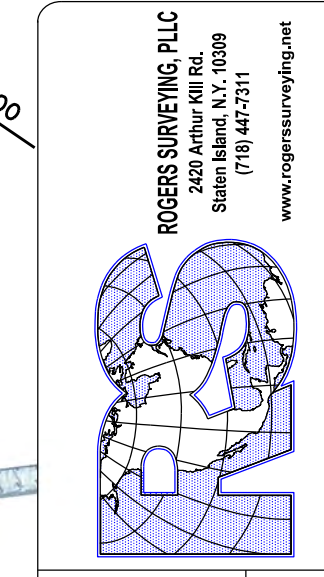
PORT JEFFERSON HARBOR



NOTE:
THE INFORMATION DEPICTED ON THIS MAP REPRESENTS THE RESULTS OF SURVEYS MADE ON THE GATES INDICATED AND CAN ONLY BE CONSIDERED THE GENERAL CONDITIONS EXISTING AT THAT TIME.
THE PLANIMETRICS SHOWN ON THIS MAP ARE FOR ORIENTATION PURPOSES ONLY.
COORDINATES REFER TO THE LONG ISLAND LAMBERT SYSTEM (NAD 1983). SOUNDINGS REFER TO THE PLANE OF MEAN LOWER LOW WATER (MLLW) WAS DETERMINED USING VDATUM V4.1.
THIS MAP IS CEIPD COMPLIANT.
THE PLANE OF MEAN LOWER LOW WATER IS 3.7 FEET BELOW NAVD (1988).
THE SOUNDING DATA DEPICTED ON THIS MAP WAS COLLECTED USING PROJECT CLASSIFICATION-GENERAL, AS DEPICTED EM 11102-100X.
THE DATA ON THIS MAP IS REPRESENTATIVE OF A LARGER DATA SET. THIS SURVEY WAS PERFORMED USING RTK GPS FROM STATION JEFF 2010.

LOCAL CONTROL DATA
BENCHMARK: 4560M 1990
ELEVATION: 13.27 NAVD 88

N.S.R.S. BENCHMARK DATA
BENCHMARK: TIDAL 2 STA #20 (KU0505)
ELEVATION: 12.64 NAVD 88



DATE OF SURVEY: AUG 24 2020	REHEET NO.: 4973
SCALE: ONE INCH = 100 FEET	FIELD BOOKS:

APPROVED: D. ROGERS	DATE: 08/23/2020
APPROVED: R. SMITH	
APPROVED: P. BIRNBAUM	
APPROVED: J. MBAY	

DEPARTMENT OF THE ARMY CORPS OF ENGINEERS NEW YORK DISTRICT NEW YORK, NEW YORK 10278	OPERATIONS DIVISION SURVEY SECTION GENSANGS
---	---

PORT JEFFERSON HARBOR
NEW YORK
CONDITION SURVEY

VH-104
SHEET 4 OF 4