

N 216.000

N 218.000

N 220.000

N 222.000



E 1.328.000

E 1.328.000

E 1.330.000

E 1.330.000

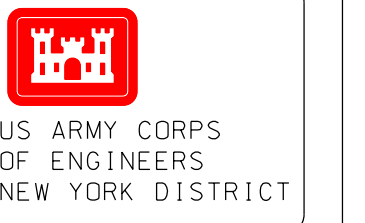
E 1.332.000

N 216.000

N 218.000

N 220.000

N 222.000


 US ARMY CORPS
OF ENGINEERS
NEW YORK DISTRICT

NO.	DATE	DESCRIPTION

SCALE: ONE INCH = 200 FEET FIELD BOOKS: N/A	DATES OF SURVEY: 22-23 MARCH & 8 APRIL 2021 REG. NO./FILE NO.: 5038/AL
---	---

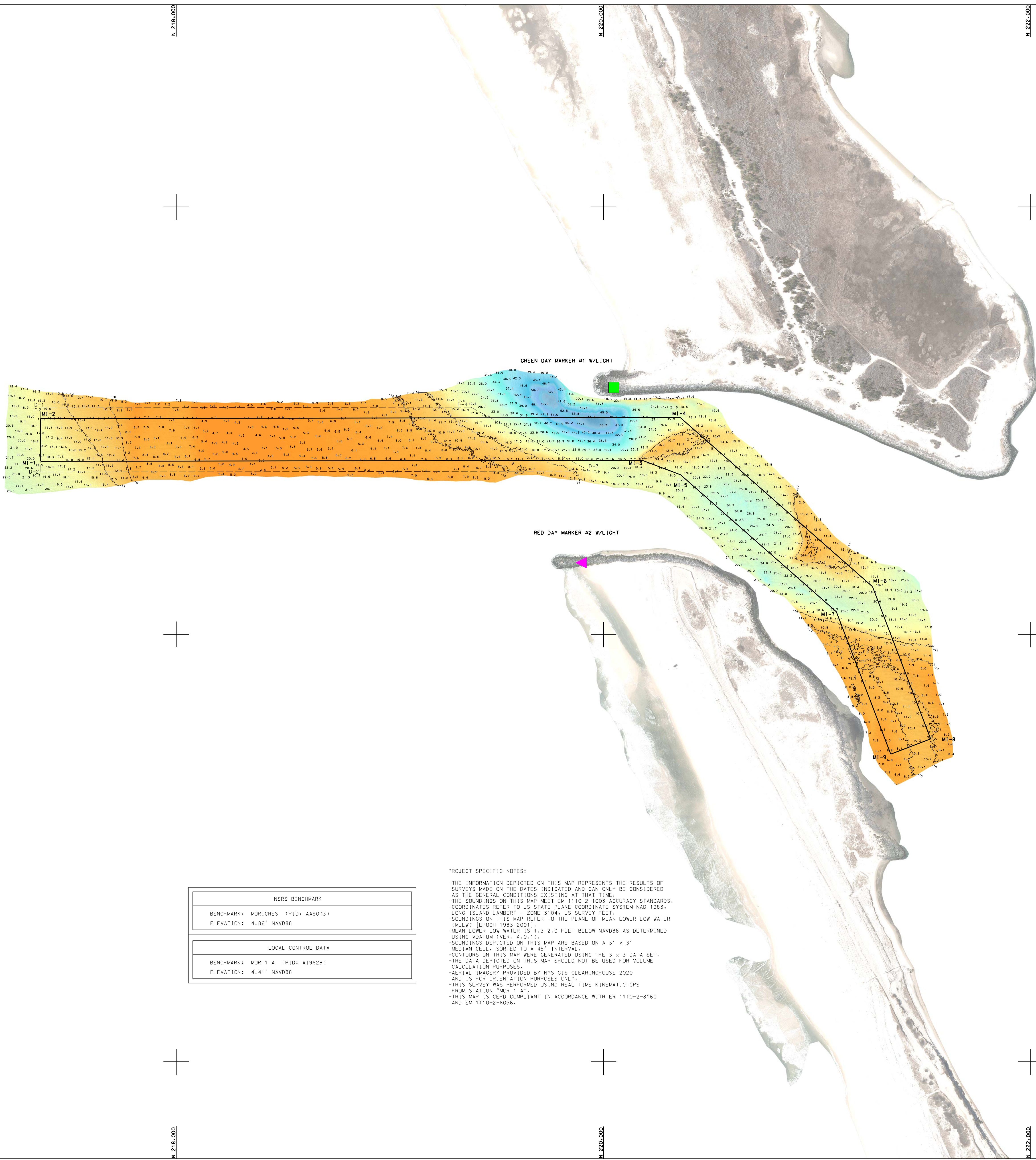
APPROVED: J. BEZTO, OTTL NEW YORK DISTRICT	APPROVED: M. EDGIE NEW YORK DISTRICT
APPROVED: P. BERGQUIST NEW YORK DISTRICT	APPROVED: J. WRAZ NEW YORK DISTRICT
APPROVED: J. WRAZ NEW YORK DISTRICT	APPROVED: J. WRAZ NEW YORK DISTRICT

DEPARTMENT OF THE ARMY CORPS OF ENGINEERS NEW YORK DISTRICT
OPERATIONS DIVISION SURVEY SECTION CENMAY-03-5

MORTICHES INLET NEW YORK CONDITION SURVEY

 VH-101
SHEET 1 OF 1

REG. NO./FILE NO.: 5038/AL



PROJECT SPECIFIC NOTES:

- THE INFORMATION DEPICTED ON THIS MAP REPRESENTS THE RESULTS OF SURVEYS MADE ON THE DATES INDICATED AND CAN ONLY BE CONSIDERED AS THE GENERAL CONDITIONS EXISTING AT THAT TIME.
- THE SOUNDINGS ON THIS MAP MEET EM 1110-2-1003 ACCURACY STANDARDS.
- COORDINATES REFER TO US STATE PLANE COORDINATE SYSTEM NAD 1983 - LONG ISLAND LAMBERT - ZONE 3104, US SURVEY FEET.
- SOUNDINGS ON THIS MAP REFER TO THE PLANE OF MEAN LOWER LOW WATER (MLLW) [EPOCH 1983-2001].
- MEAN LOWER LOW WATER IS 1.3-2.0 FEET BELOW NAVD88 AS DETERMINED USING VDATUM (VER. 4.0.1).
- SOUNDINGS DEPICTED ON THIS MAP ARE BASED ON A 3' x 3' MEDIAN CELL, SORTED TO 4.65' INTERVAL.
- CONTOURS ON THIS MAP WERE GENERATED USING THE 3 x 3 DATA SET.
- THE DATA DEPICTED ON THIS MAP SHOULD NOT BE USED FOR VOLUME CALCULATION PURPOSES.
- AERIAL IMAGERY PROVIDED BY NYS GIS CLEARINGHOUSE 2020 AND IS FOR ORIENTATION PURPOSES ONLY.
- THIS SURVEY WAS PERFORMED USING REAL TIME KINEMATIC GPS FROM STATION "MOR 1 A".
- THIS MAP IS CEPD COMPLIANT IN ACCORDANCE WITH ER 1110-2-8160 AND EM 1110-2-6056.

NSRS BENCHMARK
BENCHMARK: MORICHES (PID: AA9073) ELEVATION: 4.86' NAVD88
LOCAL CONTROL DATA
BENCHMARK: MOR 1 A (PID: A19628) ELEVATION: 4.41' NAVD88