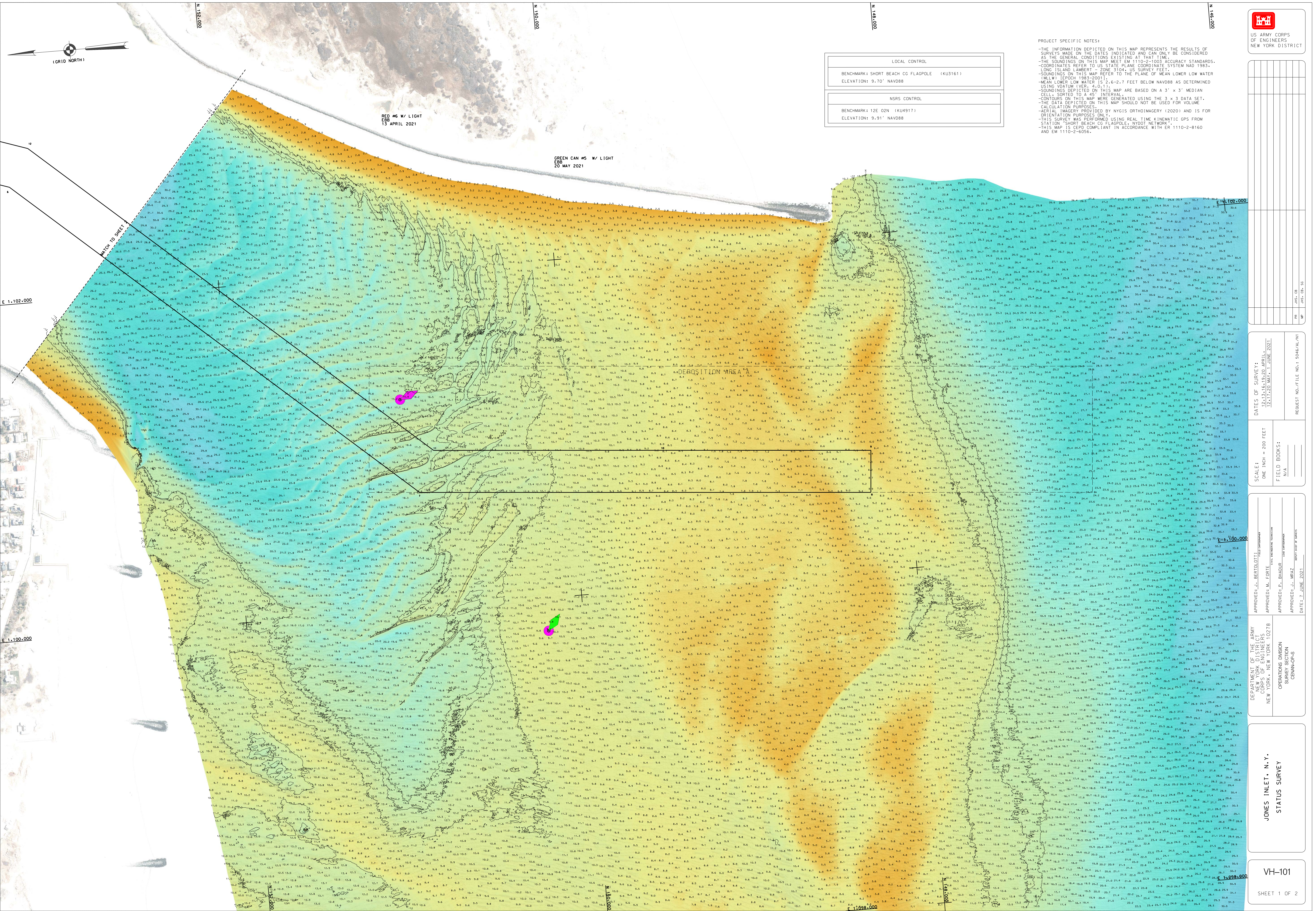


US ARMY CORPS OF ENGINEERS NEW YORK DISTRICT



PROJECT SPECIFIC NOTES:

- THE INFORMATION DEPICTED ON THIS MAP REPRESENTS THE RESULTS OF SURVEYS MADE ON THE DATES INDICATED AND CAN ONLY BE CONSIDERED AS THE GENERAL CONDITIONS EXISTING AT THAT TIME.
- THE SOUNDINGS ON THIS MAP MEET EM 1110-2-1003 ACCURACY STANDARDS.
- COORDINATES REFER TO US STATE PLANE COORDINATE SYSTEM MAD 1983.
- LONG ISLAND LAMBERT - ZONE 3104, US SURVEY FEET.
- SOUNDINGS ON THIS MAP REFER TO THE PLANE OF MEAN LOWER LOW WATER (MLLW) (EPOCH 1983-2001).
- MEAN LOWER LOW WATER IS 2.4 TO 2.7 FEET BELOW NAVD83 AS DETERMINED USING VDATUM (VER. 4.0.11).
- SOUNDINGS DEPICTED ON THIS MAP ARE BASED ON THE 3' X 3' MEDIUM CELL SORTED TO A 45° INTERVAL.
- CONTOURS ON THIS MAP WERE GENERATED USING REAL TIME KINEMATIC GPS DATA.
- THIS SURVEY WAS PERFORMED USING REAL TIME KINEMATIC GPS DATA FOR CALCULATION PURPOSES.
- AERIAL IMAGERY PROVIDED BY NYGIS ORTHOIMAGERY (2020) AND IS FOR ORIENTATION PURPOSES ONLY.
- THIS MAP IS CEPV COMPLIANT IN ACCORDANCE WITH ER 1110-2-8160 AND EM 1110-2-6056.

LOCAL CONTROL	
BENCHMARK: SHORT BEACH CG FLAGPOLE (KU3161)	ELEVATION: 9.70' NAVD88
NRSR CONTROL	
BENCHMARK: 12E OZN (KU4917)	ELEVATION: 9.91' NAVD88

RED #6 W/ LIGHT  
EBB  
13 APRIL 2021

GREEN CAN #5 W/ LIGHT  
EBB  
20 MAY 2021

W/ LINES TO SHEET

E 1:100.000

E 1:100.000

E 1:1000.000

DATES OF SURVEY:  
12-13-16-18-20 APRIL  
17-17-20 MAY, 1 JUNE 2021

SCALE:  
ONE INCH = 200 FEET

FIELD BOOKS:  
N/A

APPROVED: J. BEETO, DTLI  
APPROVED: M. ERITE  
APPROVED: P. BIRDOR  
APPROVED: J. WRAZ

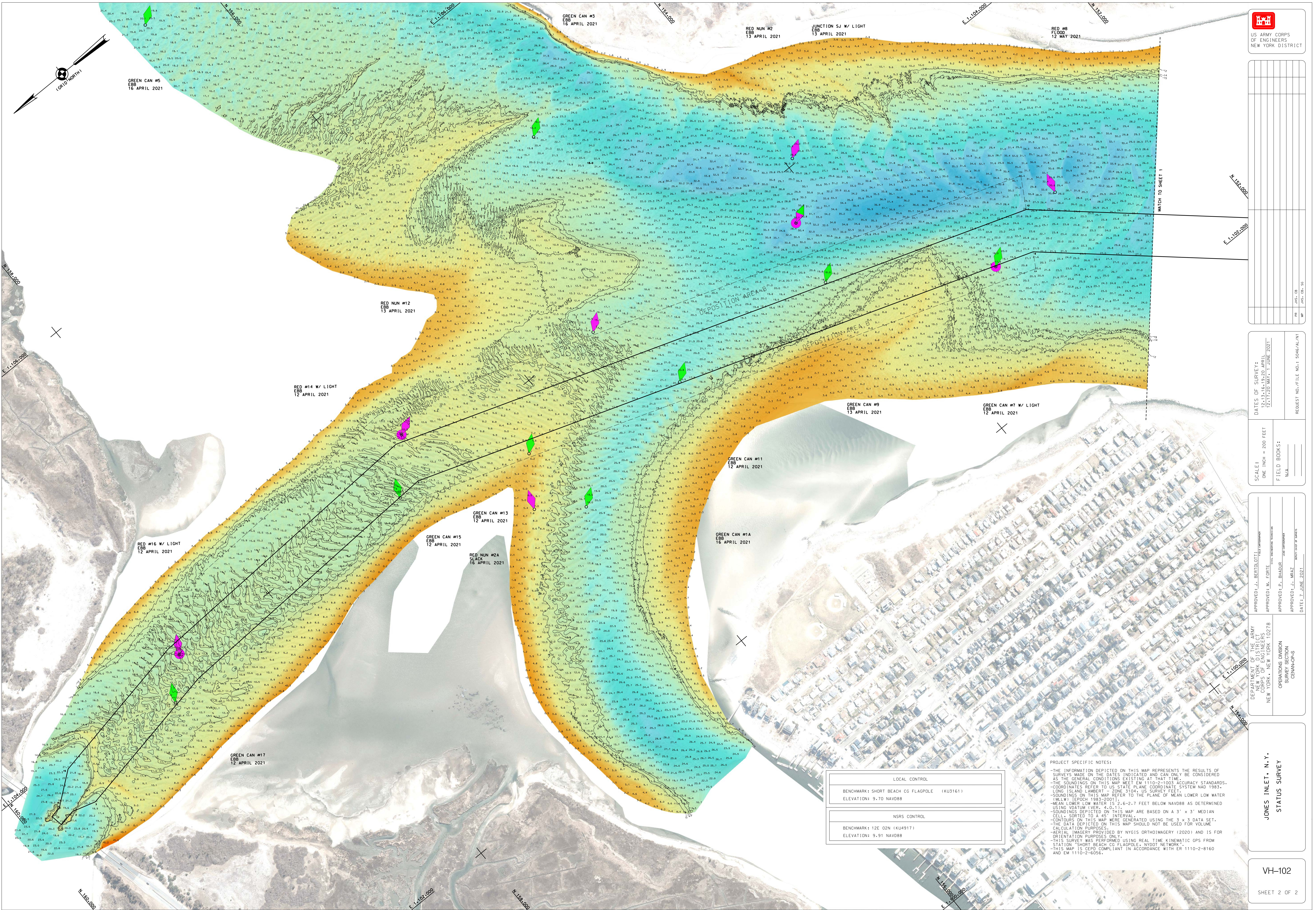
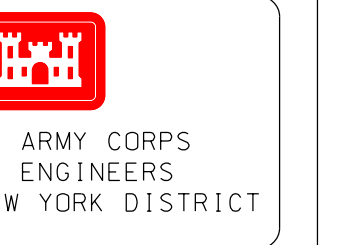
DEPARTMENT OF THE ARMY  
CORPS OF ENGINEERS  
NEW YORK, NEW YORK 10278

OPERATIONS DIVISION  
SOUTH BAY  
GENAVCOPS

JONES INLET, N.Y.  
STATUS SURVEY

VH-101  
SHEET 1 OF 2

REQUEST NO./FILE NO.: 5046/AL/NI



DATE OF SURVEY:	12-13-16-18-20 APRIL 12-17-20 MAY, 1 JUNE 2021
SCALE:	ONE INCH = 200 FEET
FIELD BOOKS:	N/A
REQUEST NO./FILE NO.:	5046/AL/NT

APPROVED:	J. BEBETO, OTI
APPROVED:	M. ERDIE
APPROVED:	P. BRIDDER
APPROVED:	J. WRZ
DATE:	1 JUNE 2021

DEPARTMENT OF THE ARMY	NEW YORK DISTRICT
CORPS OF ENGINEERS	NEW YORK DISTRICT
OPERATIONS DIVISION	SCENARIOS

JONES INLET, N.Y.
STATUS SURVEY
VH-102
SHEET 2 OF 2

LOCAL CONTROL
BENCHMARK: SHORT BEACH CG FLAGPOLE (KJ161)
ELEVATION: 9.70 NAVD88
NSRS CONTROL
BENCHMARK: 12E 02N (KJ4917)
ELEVATION: 9.91 NAVD88

PROJECT SPECIFIC NOTES:  
 -THE INFORMATION DEPICTED ON THIS MAP REPRESENTS THE RESULTS OF SURVEYS MADE ON THE DATES INDICATED AND CAN ONLY BE CONSIDERED AS THE GENERAL CONDITIONS EXISTING AT THAT TIME.  
 -THE SOUNDINGS ON THIS MAP MEET EM 1110-2-1003 ACCURACY STANDARDS.  
 -COORDINATES REFER TO US STATE PLANE COORDINATE SYSTEM NAD 1983 - LONG ISLAND LAMBERT - U.S. SURVEY FEET.  
 -SOUNDINGS ON THIS MAP REFER TO THE PLANE OF MEAN LOWER LOW WATER (M.L.L.W.) (EPIC 1983-2001).  
 -MEAN LOWER LOW WATER IS 2.6-2.7 FEET BELOW NAVD88 AS DETERMINED USING DATUM 1983.  
 -SOUNDINGS DEPICTED ON THIS MAP ARE BASED ON A 3' X 3' MEDIAN CELL SORTED TO 4' INTERVAL.  
 -CONTOURS ON THIS MAP WERE GENERATED USING THE 3 X 3 DATA SET. THE DATA DEPICTED ON THIS MAP SHOULD NOT BE USED FOR VOLUME CALCULATION PURPOSES ONLY.  
 -AERIAL IMAGERY PROVIDED BY NYGIS ORTHOIMAGERY (2020) AND IS FOR ORIENTATION PURPOSES ONLY.  
 -THIS SURVEY WAS PERFORMED USING REAL TIME KINEMATIC GPS FROM STATION SHORT BEACH CG FLAGPOLE - NYDOT NETWORK.  
 -THIS MAP IS CEP COMPLIANT IN ACCORDANCE WITH ER 1110-2-8160 AND EM 1110-2-5056.