

US ARMY CORPS
OF ENGINEERS
NEW YORK DISTRICT

[illegible]

OCEAN SURVEYS, INC.



REQ. NO.:/FILE NO.: 5064

RESULTS OF SURVEY:

CALE:

1 INCH = 100 F

APPROVED: JOSEPH TYLER
FIELD CARTOGRAPHER

APPROVED: REGINALD SMITH
PROJECT MANAGER

DEPARTMENT OF THE ARMY
NEW YORK DISTRICT

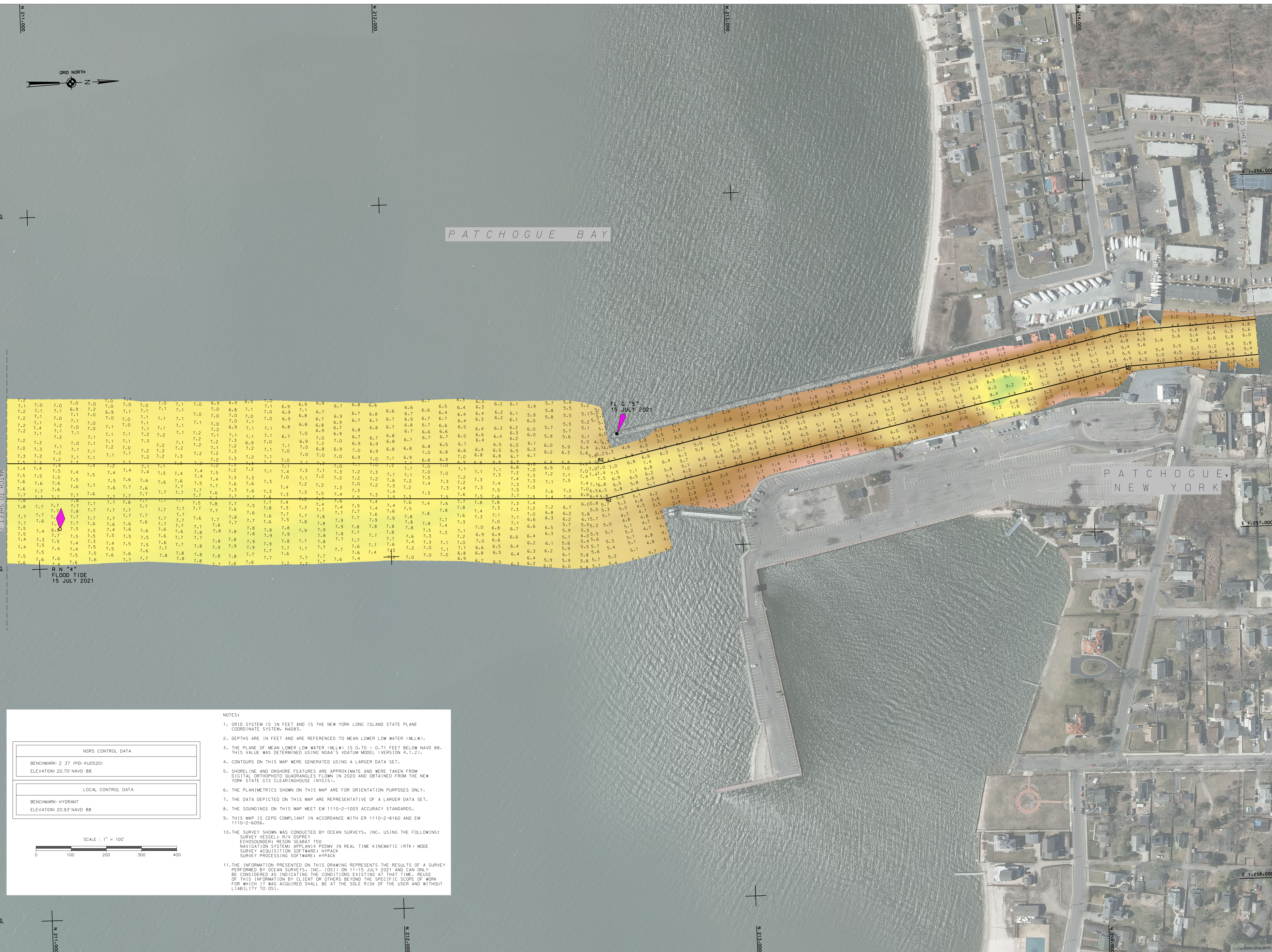
CORPUS OF ENGINEERS
NEW YORK, NEW YORK 10278

GREAT SOUTH BAY
PATCHOGUE RIVER

NEW YORK

VH-103

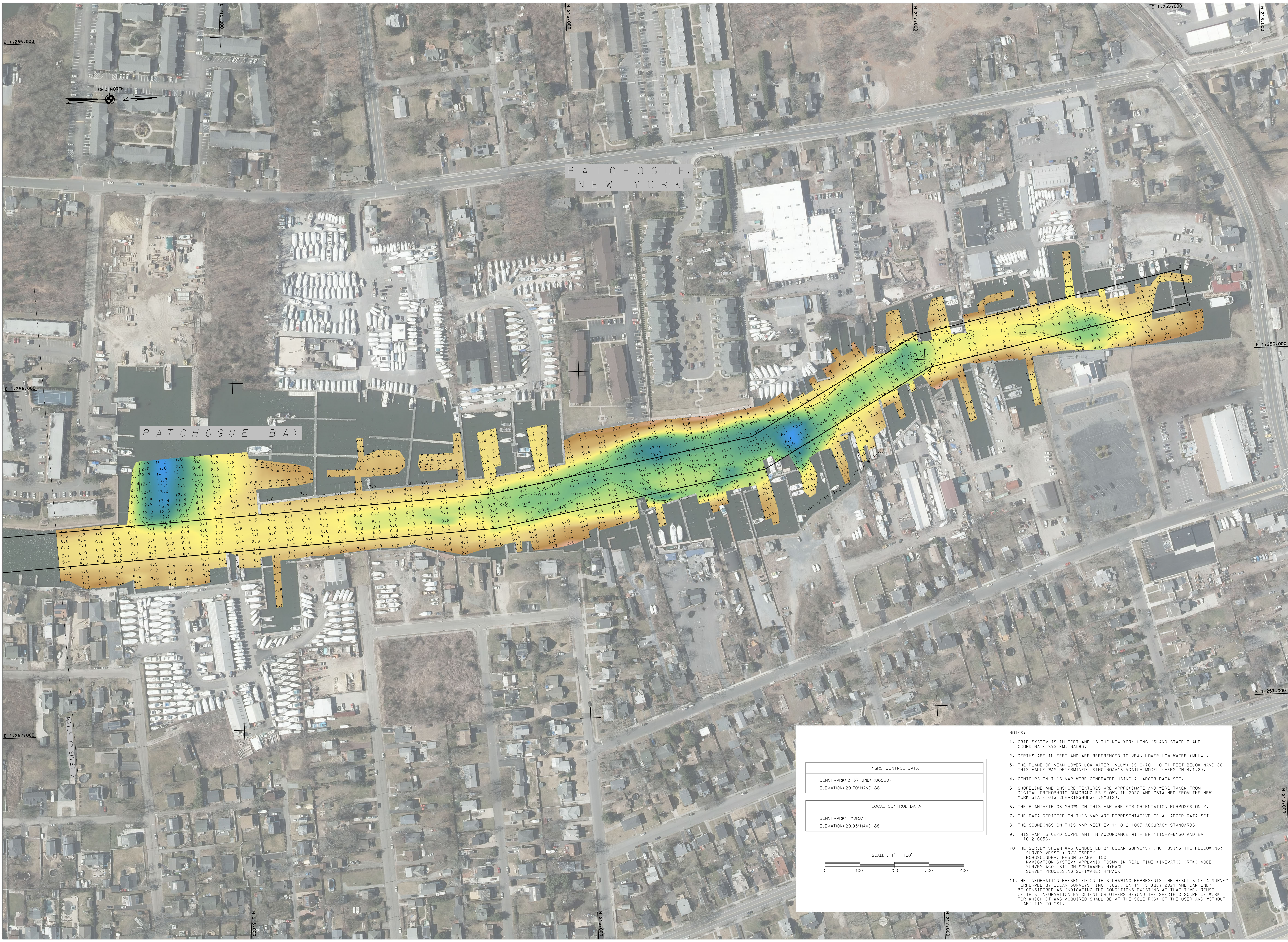
SHEET 3 OF 4



NOTES:

1. GRID SYSTEM IS IN FEET AND IS THE NEW YORK LONG ISLAND STATE PLANE COORDINATE SYSTEM, NAD83.
2. DEPTHS ARE IN FEET AND ARE REFERENCED TO MEAN LOWER LOW WATER (MLLW).
3. THE PLANE OF MEAN LOWER LOW WATER (MLLW) IS 0.70 - 0.71 FEET BELOW NAVD 88 THIS VALUE WAS DETERMINED USING NOAA'S DATUM MODEL (VERSION 4.1.2).
4. CONTOURS ON THIS MAP WERE GENERATED USING A LARGER DATA SET.
5. SHORELINE AND ONSHORE FEATURES ARE APPROXIMATE AND WERE TAKEN FROM DIGITAL ORTHOPHO TO QUADRANGLES FLOWN IN 2020 AND OBTAINED FROM THE NEW YORK STATE GIS CLEARINGHOUSE (NYGIS).
6. THE PLANIMETRICS SHOWN ON THIS MAP ARE FOR ORIENTATION PURPOSES ONLY.
7. THE DATA DEPICTED ON THIS MAP ARE REPRESENTATIVE OF A LARGER DATA SET.
8. THE SOUNDINGS ON THIS MAP MEET EM 1110-2-1003 ACCURACY STANDARDS.
9. THIS MAP IS CEPD COMPLIANT IN ACCORDANCE WITH ER 1110-2-8160 AND EM 1110-2-6056.
10. THE SURVEY SHOWN WAS CONDUCTED BY OCEAN SURVEYS, INC. USING THE FOLLOWING:
SURVEY VESSEL: R/V OSPREY
ECHOSOUNDER: RESON SEABAT 150
NAVIGATION SYSTEM: APPLANIX POSMV IN REAL TIME KINEMATIC (RTK) MODE
SURVEY ACQUISITION SOFTWARE: HYPPACK
SURVEY PROCESSING SOFTWARE: TRIMBLE HYPACK

11. THE INFORMATION PRESENTED ON THIS DRAWING REPRESENTS THE RESULTS OF A SURVEY PERFORMED BY OCEAN SURVEYS, INC. (OSI) ON 11-15 JULY 2021 AND CAN ONLY BE CONSIDERED AS INDICATING THE CONDITIONS EXISTING AT THAT TIME. REUSE OF THIS INFORMATION BY CLIENT OR OTHERS BEYOND THE SPECIFIC SCOPE OF WORK FOR WHICH IT WAS ACQUIRED SHALL BE AT THE SOLE RISK OF THE USER AND WITHOUT LIABILITY TO OSI.

[illegible]

OCEAN SURVEYS, INC.
127 MILL ROCK ROAD EAST
SANDHURST, NJ 08088
010 3AM
(609) 286-4431

DATES OF SURVEY:
 11-15 JULY 2021

REQ. NO.:/FILE NO.: 5064

SCALE:
1 INCH = 100 FEET

FIELD BOOKS:

21ES027

APPROVED: _____	JOSEPH TYLER FIELD CATHARPANES
APPROVED: _____	REGINALD SMITH PROJECT MANAGER
APPROVED: _____	PRADHEEP BHADURI LEAD CATHARPANES
APPROVED: _____	J. MRAZ SENIOR CHIEF OF MOUNTY
DATE: _____	2 SEPTEMBER 2021

DEPARTMENT OF THE ARMY
NEW YORK DISTRICT
CORPS OF ENGINEERS
NEW YORK, NEW YORK 10278

OPERATIONS DIVISION
SURVEY SECTION
CENAN-OP-S

GREAT SOUTH BAY
PATCHOGUE RIVER
NEW YORK
CONDITION SURVEY