





DATE	
TIME	
BY	
APP	
CHK	
DATE	
TIME	
BY	
APP	
CHK	

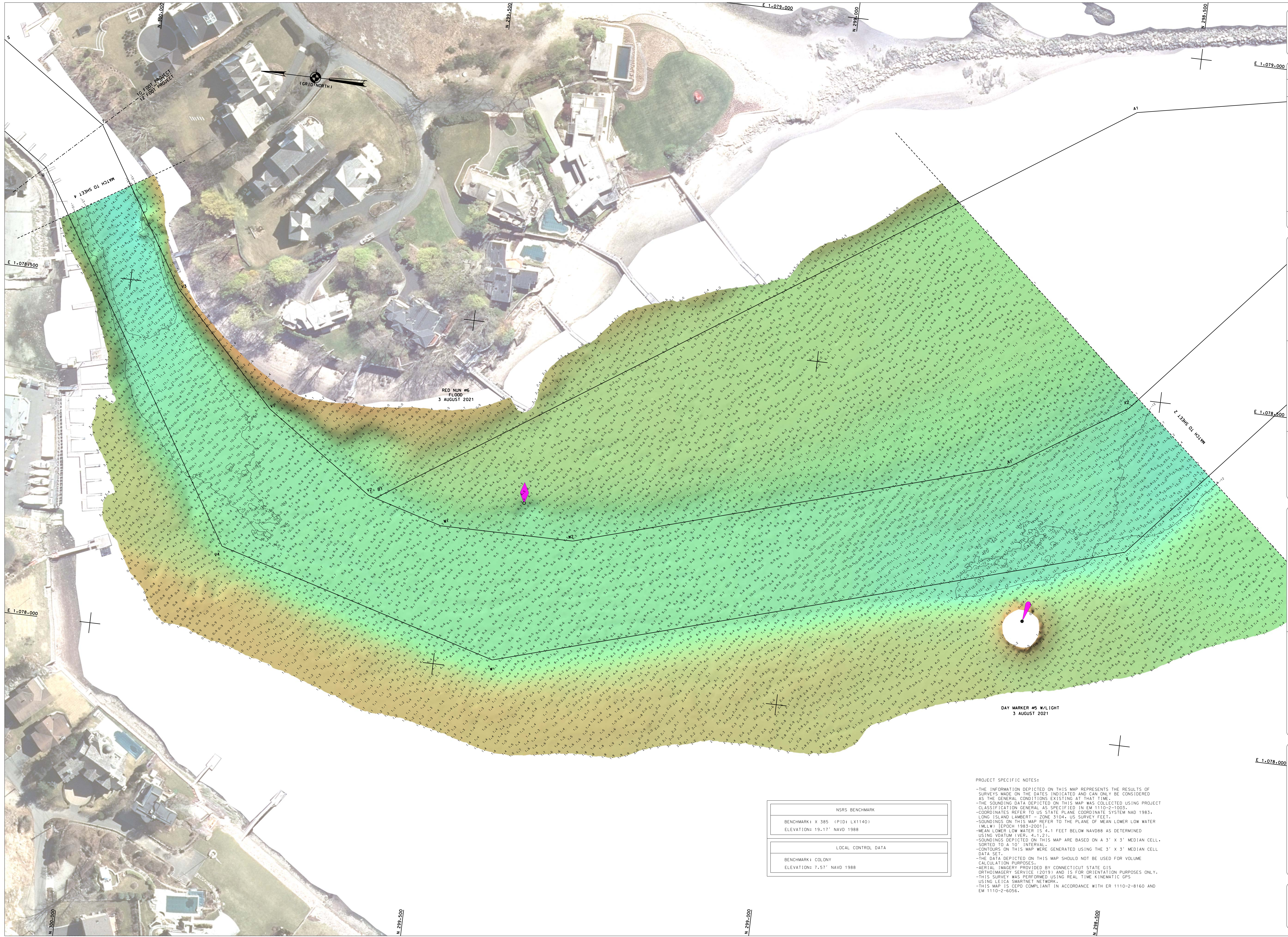


SCALE:	DATE OF SURVEY:
ONE INCH = 50 FEET	JULY AUGUST 2021
FIELD BOOKS:	
N/A	
RED. NO./FILE NO.:	5086

APPROVED:	D. MOORE	DATE:	10 AUGUST 2021
APPROVED:	M. EGRTE	DATE:	
APPROVED:	P. BERNDT	DATE:	
APPROVED:	J. WRAZ	DATE:	
DATE:	10 AUGUST 2021		

DEPARTMENT OF THE ARMY  
CORPS OF ENGINEERS  
NEW YORK DISTRICT  
OPERATIONS DIVISION  
SURVEILLANCE SECTION  
CENTAN-OP-5

PORT CHESTER HARBOR,  
NEW YORK  
CONDITION SURVEY



RED NUM #6  
FL 000  
3 AUGUST 2021

DAY MARKER #5 W/LIGHT  
3 AUGUST 2021

NSRS BENCHMARK	
BENCHMARK: X 585 (PID: LX1140)	
ELEVATION: 19.17' NAVD 1988	
LOCAL CONTROL DATA	
BENCHMARK: COLDNY	
ELEVATION: 7.57' NAVD 1988	

PROJECT SPECIFIC NOTES:  
-THE INFORMATION DEPICTED ON THIS MAP REPRESENTS THE RESULTS OF SURVEYS MADE ON THE DATES INDICATED AND CAN ONLY BE CONSIDERED AS THE GENERAL CONDITIONS EXISTING AT THAT TIME.  
-THE SOUNDING DATA DEPICTED ON THIS MAP WAS COLLECTED USING PROJECT CLASSIFICATION GENERAL AS SPECIFIED IN EM 1110-2-1003.  
-COORDINATES REFER TO US STATE PLANE COORDINATE SYSTEM NAD 1983, LONG ISLAND LAMBERT - ZONE 3104, US SURVEY FEET  
-SOUNDINGS ON THIS MAP REFER TO THE PLANE OF MEAN LOWER LOW WATER (MLLW) (EPOCH 1983-2001), 1 FEET BELOW NAVD88 AS DETERMINED USING VDATUM (VER. 4.1.2).  
-MEAN LOWER LOW WATER IS 4.1 FEET BELOW NAVD88 AS DETERMINED USING VDATUM (VER. 4.1.2).  
-SOUNDINGS DEPICTED ON THIS MAP ARE BASED ON A 3' X 3' MEDIAN CELL, SORTED TO A 1' INTERVAL.  
-CONTOURS ON THIS MAP WERE GENERATED USING THE 3' X 3' MEDIAN CELL DATA SET.  
-THE DATA DEPICTED ON THIS MAP SHOULD NOT BE USED FOR VOLUME CALCULATION PURPOSES.  
-AERIAL IMAGERY PROVIDED BY CONNECTICUT STATE GIS ORTHOIMAGERY SERVICE (2019) AND IS FOR ORIENTATION PURPOSES ONLY.  
-THIS SURVEY WAS PERFORMED USING REAL TIME KINEMATIC GPS USING LEICA SMARTNET NETWORK.  
-THIS MAP IS DEPT COMPLIANT IN ACCORDANCE WITH EM 1110-2-8160 AND EM 1110-2-8056.





GRID NORTH

MATCH TO SHEET 6

MATCH TO SHEET 4

NSRS BENCHMARK	
BENCHMARK: X 385 (PID: LX1140)	
ELEVATION: 19.17' NAVD 1988	
LOCAL CONTROL DATA	
BENCHMARK: COLONY	
ELEVATION: 7.57' NAVD 1988	

**PROJECT SPECIFIC NOTES:**

- THE INFORMATION DEPICTED ON THIS MAP REPRESENTS THE RESULTS OF SURVEYS MADE ON THE DATES INDICATED AND CAN ONLY BE CONSIDERED AS THE GENERAL CONDITIONS EXISTING AT THAT TIME.
- THE SOUNDING DATA DEPICTED ON THIS MAP WAS COLLECTED USING PROJECT CLASSIFICATION GENERAL AS SPECIFIED IN EM 1110-2-1003.
- COORDINATES REFER TO US STATE PLANE COORDINATE SYSTEM NAD 1983, LONG ISLAND LAMBERT - ZONE 3104, US SURVEY FEET.
- SOUNDINGS ON THIS MAP REFER TO THE PLANE OF MEAN LOWER LOW WATER (MLLW) (EPOCH 1983-2001).
- MEAN LOWER LOW WATER IS 4.1 FEET BELOW NAVD88 AS DETERMINED USING DATUM VER. 4.1-2.1.
- SOUNDINGS DEPICTED ON THIS MAP ARE BASED ON A 3' X 3' MEDIAN CELL, SORTED TO A 10' INTERVAL.
- CONTOURS ON THIS MAP WERE GENERATED USING THE 3' X 3' MEDIAN CELL DATA SET.
- THE DATA DEPICTED ON THIS MAP SHOULD NOT BE USED FOR VOLUME CALCULATION PURPOSES.
- AERIAL IMAGERY PROVIDED BY CONNECTICUT STATE GIS ORTHOIMAGERY SERVICE (2019) AND IS FOR ORIENTATION PURPOSES ONLY.
- THIS SURVEY WAS PERFORMED USING REAL TIME KINEMATIC GPS USING LEICA SMARTNET NETWORK.
- THIS MAP IS CEPD COMPLIANT IN ACCORDANCE WITH ER 1110-2-8160 AND EM 1110-2-6056.

CORPS OF ENGINEERS	
US ARMY CORPS OF ENGINEERS NEW YORK DISTRICT	
PR	ED
MP	JD

**GBA**  
 SURVEYING  
 GIBSON & BRYANT ASSOCIATES, INC.  
 GREENVILLE CENTER BUILDING C  
 100 W. 100th St. Suite 408  
 Danbury, CT 06810

DATE: 30 AUGUST 2021  
 FILE NO.: 5066

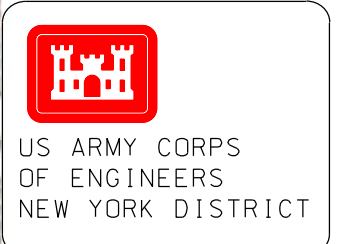
SCALE: ONE INCH = 50 FEET  
 FIELD BOOKS: N/A

APPROVED: D. MOORE  
 APPROVED: M. FORTI  
 APPROVED: E. BISHOP  
 APPROVED: J. WEIZ  
 DATE: 30 AUGUST 2021

DEPARTMENT OF THE ARMY  
 CORPS OF ENGINEERS  
 NEW YORK, NEW YORK 10278  
 OPERATIONS DIVISION  
 SURVEY SECTION  
 CEVAN-0P-S

PORT CHESTER HARBOR,  
 NEW YORK  
 CONDITION SURVEY

VH-105  
 SHEET 5 OF 7  
 REG. NO./FILE NO.: 5066



PR	ED
MP	JD

**GBA**  
 GEORGETOWN BAY ASSOCIATES, INC.  
 GREENVILLE CENTER BUILDING C  
 GREENVILLE, SC 29615  
 TEL: 803.782.4448 FAX: 803.785-9218

DATE OF SURVEY: 02.26-AUGUST.2021  
 REG. NO./FILE NO.: 5066

SCALE: ONE INCH = 50 FEET  
 FIELD BOOKS: N/A

APPROVED: DJ. WOODRE  
 APPROVED: M. LEBTIE  
 APPROVED: E. BISHOP  
 APPROVED: J. WEAZ  
 DATE: 30. AUGUST. 2021

DEPARTMENT OF THE ARMY  
 CORPS OF ENGINEERS  
 NEW YORK, NEW YORK 10278  
 OPERATIONS DIVISION  
 SURVEY SECTION  
 CENAN-01-S

**PORT CHESTER HARBOR,  
 NEW YORK**  
 CONDITION SURVEY

VH-106  
 SHEET 6 OF 7



NRS BENCHMARK BENCHMARK: X 395 (PID: LX1140) ELEVATION: 19.17' NAVD 1988
LOCAL CONTROL DATA BENCHMARK: COLONY ELEVATION: 7.57' NAVD 1988

PROJECT SPECIFIC NOTES:  
 -THE INFORMATION DEPICTED ON THIS MAP REPRESENTS THE RESULTS OF SURVEYS MADE ON THE DATES INDICATED AND CAN ONLY BE CONSIDERED AS THE GENERAL CONDITIONS EXISTING AT THAT TIME.  
 -THE SOUNDING DATA DEPICTED ON THIS MAP WAS COLLECTED USING PROJECT CLASSIFICATION GENERAL AS SPECIFIED IN EM 1110-2-1003.  
 -COORDINATES REFER TO US STATE PLANE COORDINATE SYSTEM NAD 1983, LONG ISLAND LAMBERT - ZONE 3104, US SURVEY FEET.  
 -SOUNDINGS ON THIS MAP REFER TO THE PLANE OF MEAN LOWER LOW WATER (MLLW) (EPOCH 1983-2001).  
 -MEAN LOWER LOW WATER IS 4.1 FEET BELOW NAVD88 AS DETERMINED USING DATUM (VER: 4.1.21).  
 -SOUNDINGS DEPICTED ON THIS MAP ARE BASED ON A 3' X 3' MEDIAN CELL, SORTED TO A 10' INTERVAL.  
 -CONTOURS ON THIS MAP WERE GENERATED USING THE 3' X 3' MEDIAN CELL DATA SET.  
 -THE DATA DEPICTED ON THIS MAP SHOULD NOT BE USED FOR VOLUME CALCULATION PURPOSES.  
 -AERIAL IMAGERY PROVIDED BY CONNECTICUT STATE GIS ORTHOIMAGERY SERVICE (2019) AND IS FOR ORIENTATION PURPOSES ONLY.  
 -THIS SURVEY WAS PERFORMED USING REAL TIME KINEMATIC GPS USING LEICA SMARTNET NETWORK.  
 -THIS MAP IS CERO COMPLIANT IN ACCORDANCE WITH ER 1110-2-8160 AND EM 1110-2-6056.



 U.S. ARMY CORPS OF ENGINEERS NEW YORK DISTRICT	
DATE OF SURVEY:	03.26.AUGUST.2021
SCALE:	ONE INCH = 50 FEET
FIELD BOOKS:	N/A
APPROVED BY:	MP
DATE:	30.AUGUST.2021
REVISION:	NO. / FILE NO. : 5066

**GBA**  
 GEOTECHNICAL & SURVEYING  
 SHAWAN & BRYANT ASSOCIATES, INC.  
 GREENVILLE CENTER BUILDING C  
 100 N. STATE ST. SUITE 200  
 GREENVILLE, SC 29601  
 TEL: 864.292.2448 FAX: 864.292.2449

DEPARTMENT OF THE ARMY  
 CORPS OF ENGINEERS  
 NEW YORK, NEW YORK 10278  
 OPERATIONS DIVISION  
 SURVEY SECTION  
 CEVAN-07-S

PORT CHESTER HARBOR,  
 NEW YORK  
 CONDITION SURVEY

VH-107  
 SHEET 7 OF 7

REG. NO./FILE NO.: 5066

NGRS BENCHMARK BENCHMARK: X 395 (PID: LX1140) ELEVATION: 19.17' NAVD 1988
LOCAL CONTROL DATA BENCHMARK: COLONY ELEVATION: 7.57' NAVD 1988

PROJECT SPECIFIC NOTES:

- THE INFORMATION DEPICTED ON THIS MAP REPRESENTS THE RESULTS OF SURVEYS MADE ON THE DATES INDICATED AND CAN ONLY BE CONSIDERED AS THE GENERAL CONDITIONS EXISTING AT THAT TIME.
- THE SOUNDING DATA DEPICTED ON THIS MAP WAS COLLECTED USING PROJECT CLASSIFICATION GENERAL AS SPECIFIED IN EM 1110-2-1003.
- COORDINATES REFER TO US STATE PLANE COORDINATE SYSTEM NAD 1983, LONG ISLAND LAMBERT - ZONE 3104, US SURVEY FEET.
- SOUNDINGS ON THIS MAP REFER TO THE PLANE OF MEAN LOWER LOW WATER (MLLW) [EPOCH 1983-2001].
- MEAN LOWER LOW WATER IS 4.1 FEET BELOW NAVD88 AS DETERMINED USING DATUM (VER. 4.1-21).
- SOUNDINGS DEPICTED ON THIS MAP ARE BASED ON A 3' X 3' MEDIAN CELL, SORTED TO A 10' INTERVAL.
- CONTOURS ON THIS MAP WERE GENERATED USING THE 3' X 3' MEDIAN CELL DATA SET.
- THE DATA DEPICTED ON THIS MAP SHOULD NOT BE USED FOR VOLUME CALCULATION PURPOSES.
- AERIAL IMAGERY PROVIDED BY CONNECTICUT STATE GIS ORTHOREGISTRY SERVICE (2019) AND IS FOR ORIENTATION PURPOSES ONLY.
- THIS SURVEY WAS PERFORMED USING REAL TIME KINEMATIC GPS USING LEICA SMARTNE NETWORK.
- THIS MAP IS CEED COMPLIANT IN ACCORDANCE WITH ER 1110-2-8160 AND EM 1110-2-6056.