

PROJECT SPECIFIC NOTES:

- THE INFORMATION DEPICTED ON THIS MAP REPRESENTS THE RESULTS OF SURVEYS MADE ON THE DATES INDICATED AND CAN ONLY BE CONSIDERED AS THE GENERAL CONDITIONS EXISTING AT THAT TIME.
- THE SOUNDINGS ON THIS MAP MEET EM 1110-2-1003 ACCURACY STANDARDS.
- THE TOPOGRAPHIC DATA ON THIS MAP MEET EM 1110-1-1005 ACCURACY STANDARDS.
- THIS MAP IS CEPD COMPLIANT IN ACCORDANCE WITH ER 1110-2-8160 AND EM 1110-2-6056.
- COORDINATES REFER TO US STATE PLANE COORDINATE SYSTEM NAD 1983, LONG ISLAND LAMBERT - ZONE 3104, US SURVEY FEET.
- SOUNDINGS ON THIS MAP REFER TO THE PLANE OF MEAN LOWER LOW WATER (MLLW) [EPOCH 1983-2001].
- MEAN LOWER LOW WATER IS 3.1 FEET BELOW NAVD88 AS DETERMINED USING VDATUM (VER. 4.3).
- SOUNDINGS DEPICTED ON THIS MAP ARE BASED ON A 3' x 3' MEDIAN CELL, SORTED TO A 10' INTERVAL.
- CONTOURS ON THIS MAP WERE GENERATED USING THE 3 x 3 DATA SET.
- THE DATA DEPICTED ON THIS MAP SHOULD NOT BE USED FOR VOLUME CALCULATION PURPOSES.
- AERIAL IMAGERY PROVIDED BY NY STATE GIS CLEARINGHOUSE 2020 AND IS FOR ORIENTATION PURPOSES ONLY.
- THIS SURVEY WAS PERFORMED USING REAL TIME KINEMATIC GPS FROM STATION "RTK TUCK".

NSRS BENCHMARK	LOCAL CONTROL DATA
BENCHMARK: A 374 (PID: LX0485) ELEVATION: 58.21' (NAVD 1988)	BENCHMARK: 851 2668 A (PID: BBC2711) ELEVATION: 9.96' (NAVD 1988)

US ARMY CORPS OF ENGINEERS
NEW YORK DISTRICT

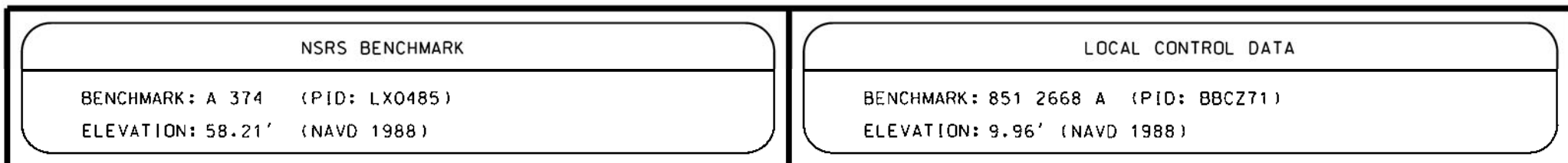
DATE OF SURVEY: 27-31 OCT 2022	SCALE: ONE INCH = 500 FEET	APPROVED: J. MCKELVEY FIELD CARTOGRAPHER	DEPARTMENT OF THE ARMY U.S. ARMY CORPS OF ENGINEERS NEW YORK DISTRICT NEW YORK, NEW YORK 10278
REQ. NO./FILE NO.: 5234/AL	FIELD BOOKS: 1052	APPROVED: M. FORTE CHIEF ENGINEERING TECHNICIAN	OPERATIONS DIVISION SURVEY SECTION CENAN-OP-SS
		APPROVED: P. BALDOR LEAD CARTOGRAPHER	
		APPROVED: J. MGAZ DEPUTY CHIEF OF SURVEY	
		DATE: 3 NOVEMBER 2022	

MATTITUCK CHANNEL
NEW YORK

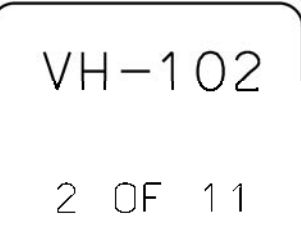
CONDITION SURVEY

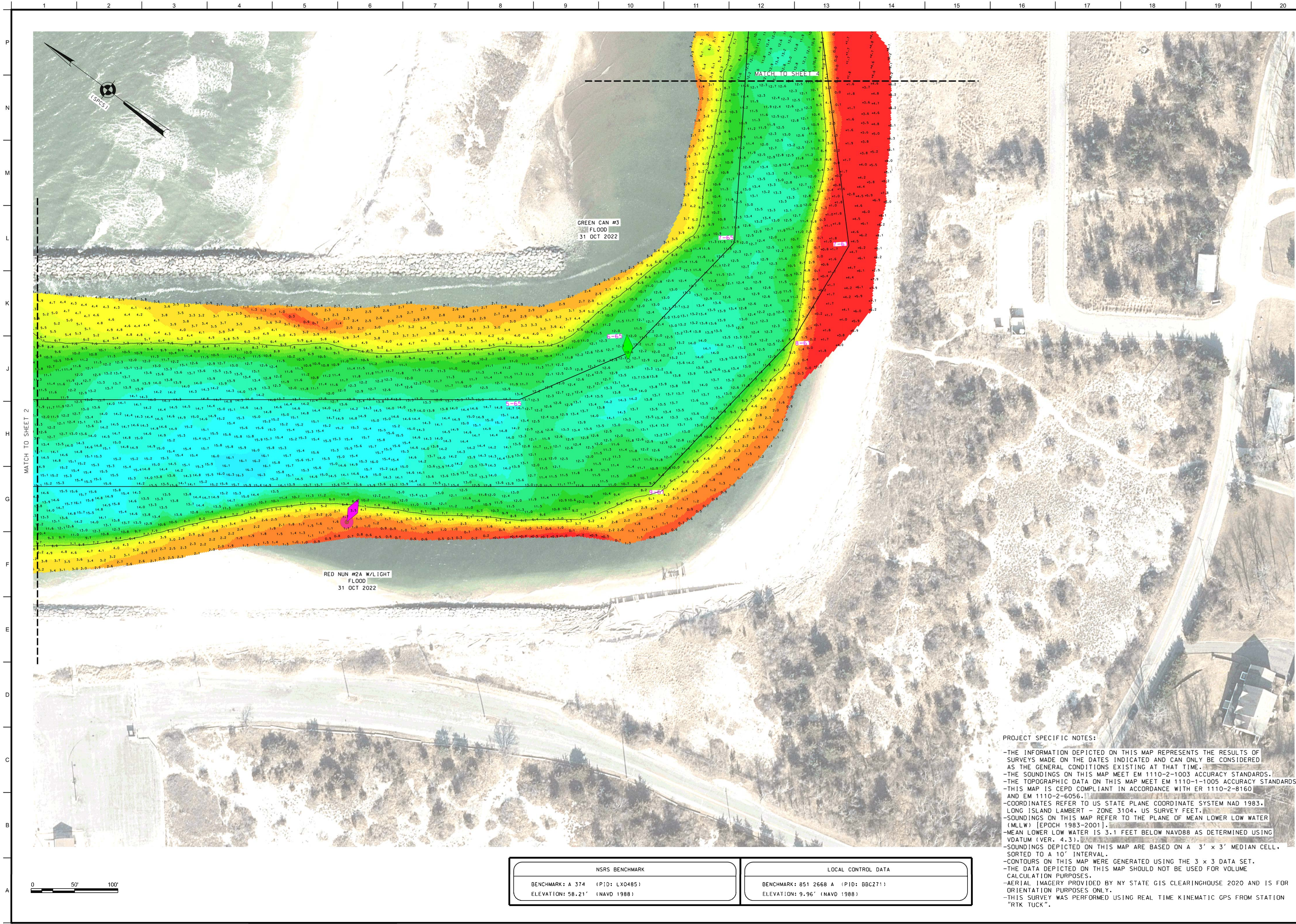
VH-101


1 OF 11



- THE INFORMATION DEPICTED ON THIS MAP REPRESENTS THE RESULTS OF SURVEYS MADE ON THE DATES INDICATED AND CAN ONLY BE CONSIDERED AS THE GENERAL CONDITIONS EXISTING AT THAT TIME.
- THE SOUNDINGS ON THIS MAP MEET EM 1110-2-1003 ACCURACY STANDARDS.
- THE TOPOGRAPHIC DATA ON THIS MAP MEET EM 1110-1-1005 ACCURACY STANDARDS.
- THIS MAP IS CEPD COMPLIANT IN ACCORDANCE WITH ER 1110-2-8160 AND EM 1110-2-6056
- COORDINATES REFER TO US STATE PLANE COORDINATE SYSTEM NAD 1983, LONG ISLAND LAMBERT - ZONE 3104, US SURVEY FEET.
- SOUNDINGS ON THIS MAP REFER TO THE PLANE OF MEAN LOWER LOW WATER (MLLW) [EPOCH 1983-2001].
- MEAN LOWER LOW WATER IS 3.1 FEET BELOW NAVD88 AS DETERMINED USING VDdatum (VER. 4.3).
- SOUNDINGS DEPICTED ON THIS MAP ARE BASED ON A 3' x 3' MEDIAN CELL, SORTED TO A 10' INTERVAL.
- CONTOURS ON THIS MAP WERE GENERATED USING THE 3 x 3 DATA SET.
- THE DATA DEPICTED ON THIS MAP SHOULD NOT BE USED FOR VOLUME CALCULATION.
- AERIAL IMAGERY PROVIDED BY NY STATE GIS CLEARINGHOUSE 2020 AND IS FOR ORIENTATION PURPOSES ONLY.
- THIS SURVEY WAS PERFORMED USING REAL TIME KINEMATIC GPS FROM STATION "RTK TUCK".







US ARMY CORPS
OF ENGINEERS
NEW YORK DISTRICT

EQ:JHS
JHS

DATES OF SURVEY:
27-31 OCT 2022

SCALE:
ONE INCH = 50 FEET

FIELD BOOKS:
1052

REQ. NO./FILE NO.: 5234/AL

APPROVED: J. MCKELVEY
FIELD CARTOGRAPHER

APPROVED: M. FORTE
CHIEF ENGINEERING TECHNICIAN

APPROVED: P. BLADUR
LEAD CARTOGRAPHER

APPROVED: J. MRAZ
DEPUTY CHIEF OF SURVEY

DATE: 3 NOVEMBER 2022

DEPARTMENT OF THE ARMY
U.S. ARMY CORPS OF ENGINEERS
NEW YORK DISTRICT
NEW YORK, NEW YORK 10278

OPERATIONS DIVISION
SURVEY SECTION
CCNAN-OP-SS

MATTITUCK CHANNEL
NEW YORK

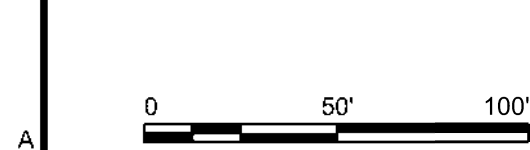
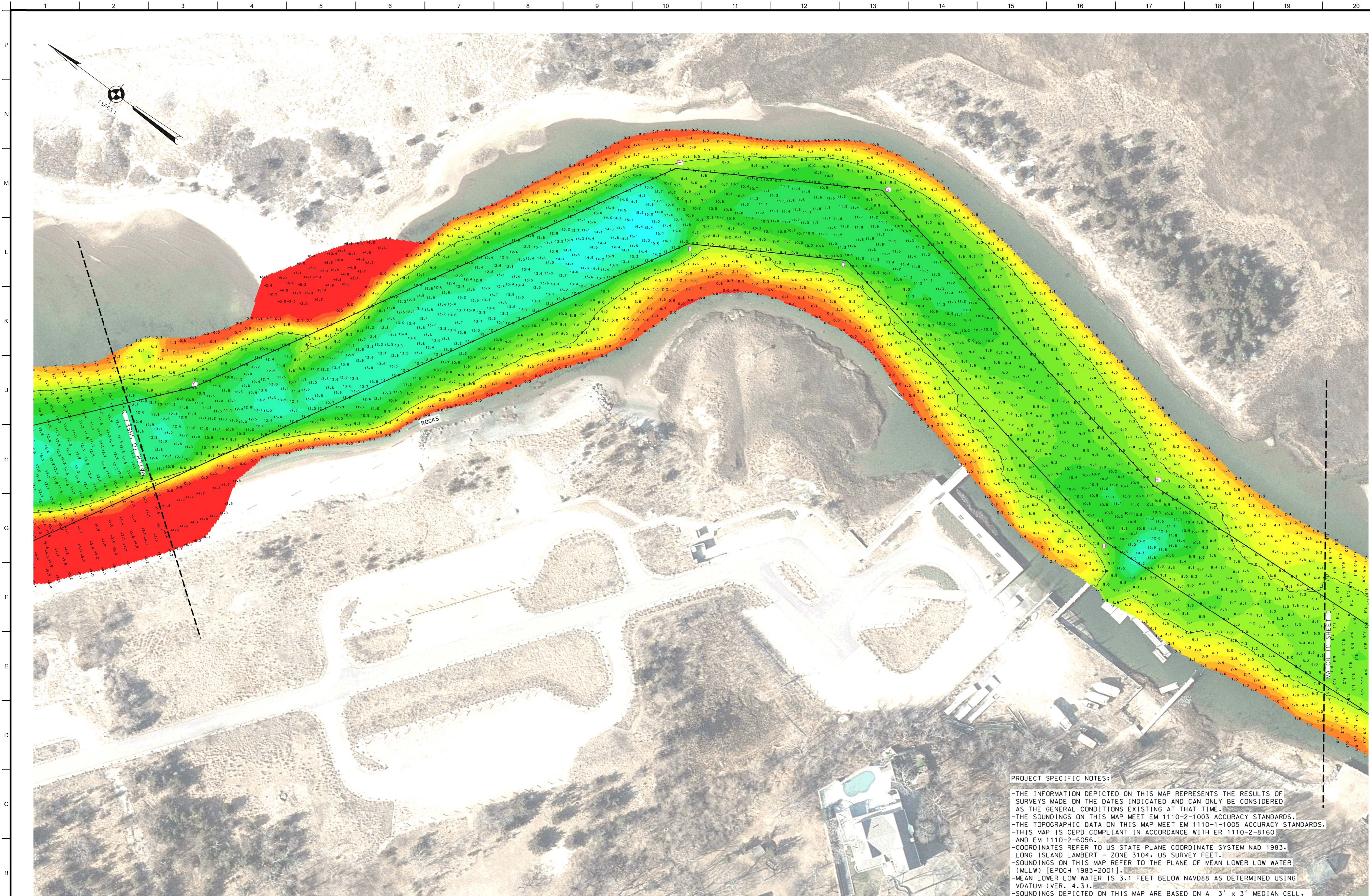
CONDITION SURVEY

VH-103

3 OF 11

PROJECT SPECIFIC NOTES:

- THE INFORMATION DEPICTED ON THIS MAP REPRESENTS THE RESULTS OF SURVEYS MADE ON THE DATES INDICATED AND CAN ONLY BE CONSIDERED AS THE GENERAL CONDITIONS EXISTING AT THAT TIME.
- THE SOUNDINGS ON THIS MAP MEET EM 1110-2-1003 ACCURACY STANDARDS.
- THE TOPOGRAPHIC DATA ON THIS MAP MEET EM 1110-1-1005 ACCURACY STANDARDS.
- THIS MAP IS CEPD COMPLIANT IN ACCORDANCE WITH ER 1110-2-8160 AND EM 1110-2-6056.
- COORDINATES REFER TO US STATE PLANE COORDINATE SYSTEM NAD 1983, LONG ISLAND LAMBERT - ZONE 3104, US SURVEY FEET.
- SOUNDINGS ON THIS MAP REFER TO THE PLANE OF MEAN LOWER LOW WATER (MLLW) [EPOCH 1983-2001].
- MEAN LOWER LOW WATER IS 3.1 FEET BELOW NAVD88 AS DETERMINED USING VDUTUM (VER. 4.3).
- SOUNDINGS DEPICTED ON THIS MAP ARE BASED ON A 3' x 3' MEDIAN CELL, SORTED TO A 10' INTERVAL.
- CONTOURS ON THIS MAP WERE GENERATED USING THE 3 x 3 DATA SET.
- THE DATA DEPICTED ON THIS MAP SHOULD NOT BE USED FOR VOLUME CALCULATION PURPOSES.
- AERIAL IMAGERY PROVIDED BY NY STATE GIS CLEARINGHOUSE 2020 AND IS FOR ORIENTATION PURPOSES ONLY.
- THIS SURVEY WAS PERFORMED USING REAL TIME KINEMATIC GPS FROM STATION "RTK TUCK".



NSRS BENCHMARK		LOCAL CONTROL DATA	
BENCHMARK: A 374	(PID: LX0485)	BENCHMARK: 851 2668 A	(PID: BBC711)
ELEVATION: 58.21'	(NAVD 1988)	ELEVATION: 9.96'	(NAVD 1988)

PROJECT SPECIFIC NOTES:

- THE INFORMATION DEPICTED ON THIS MAP REPRESENTS THE RESULTS OF SURVEYS MADE ON THE DATES INDICATED AND CAN ONLY BE CONSIDERED AS THE GENERAL CONDITIONS EXISTING AT THAT TIME.
- THE SOUNDINGS ON THIS MAP MEET EM 1110-2-1003 ACCURACY STANDARDS.
- THE TOPOGRAPHIC DATA ON THIS MAP MEET EM 1110-1-1005 ACCURACY STANDARDS.
- THIS MAP IS CEPD COMPLIANT IN ACCORDANCE WITH ER 1110-2-8160 AND EM 1110-2-6056.
- COORDINATES REFER TO US STATE PLANE COORDINATE SYSTEM NAD 1983, LONG ISLAND LAMBERT - ZONE 3104, US SURVEY FEET.
- SOUNDINGS ON THIS MAP REFER TO THE PLANE OF MEAN LOWER LOW WATER (MLLW) [EPOCH 1983-2001].
- MEAN LOWER LOW WATER IS 3.1 FEET BELOW NAVD88 AS DETERMINED USING VDATUM (VER. 4.3).
- SOUNDINGS DEPICTED ON THIS MAP ARE BASED ON A 3' x 3' MEDIAN CELL, SORTED TO A 10' INTERVAL.
- CONTOURS ON THIS MAP WERE GENERATED USING THE 3 x 3 DATA SET.
- THE DATA DEPICTED ON THIS MAP SHOULD NOT BE USED FOR VOLUME CALCULATION PURPOSES.
- AERIAL IMAGERY PROVIDED BY NY STATE GIS CLEARINGHOUSE 2020 AND IS FOR ORIENTATION PURPOSES ONLY.
- THIS SURVEY WAS PERFORMED USING REAL TIME KINEMATIC GPS FROM STATION "RTK TUCK".

US ARMY CORPS OF ENGINEERS
NEW YORK DISTRICT

PR	EQ-JMS	JMS
MP		

DATES OF SURVEY:
27-31 OCT 2022

SCALE:
ONE INCH = 50 FEET

FIELD BOOKS:
1052

REQ. NO./FILE NO.: 52342/AL

APPROVED: J. MCKELVEY
FIELD CARTOGRAPHER

APPROVED: M. FORTE
CHIEF ENGINEERING TECHNICIAN

APPROVED: P. BALDOR
LEAD CARTOGRAPHER

APPROVED: J. MGAZ
CHIEF OF SURVEY

DATE: 3 NOVEMBER 2022

DEPARTMENT OF THE ARMY
U.S. ARMY CORPS OF ENGINEERS
NEW YORK DISTRICT
NEW YORK, NEW YORK 10278

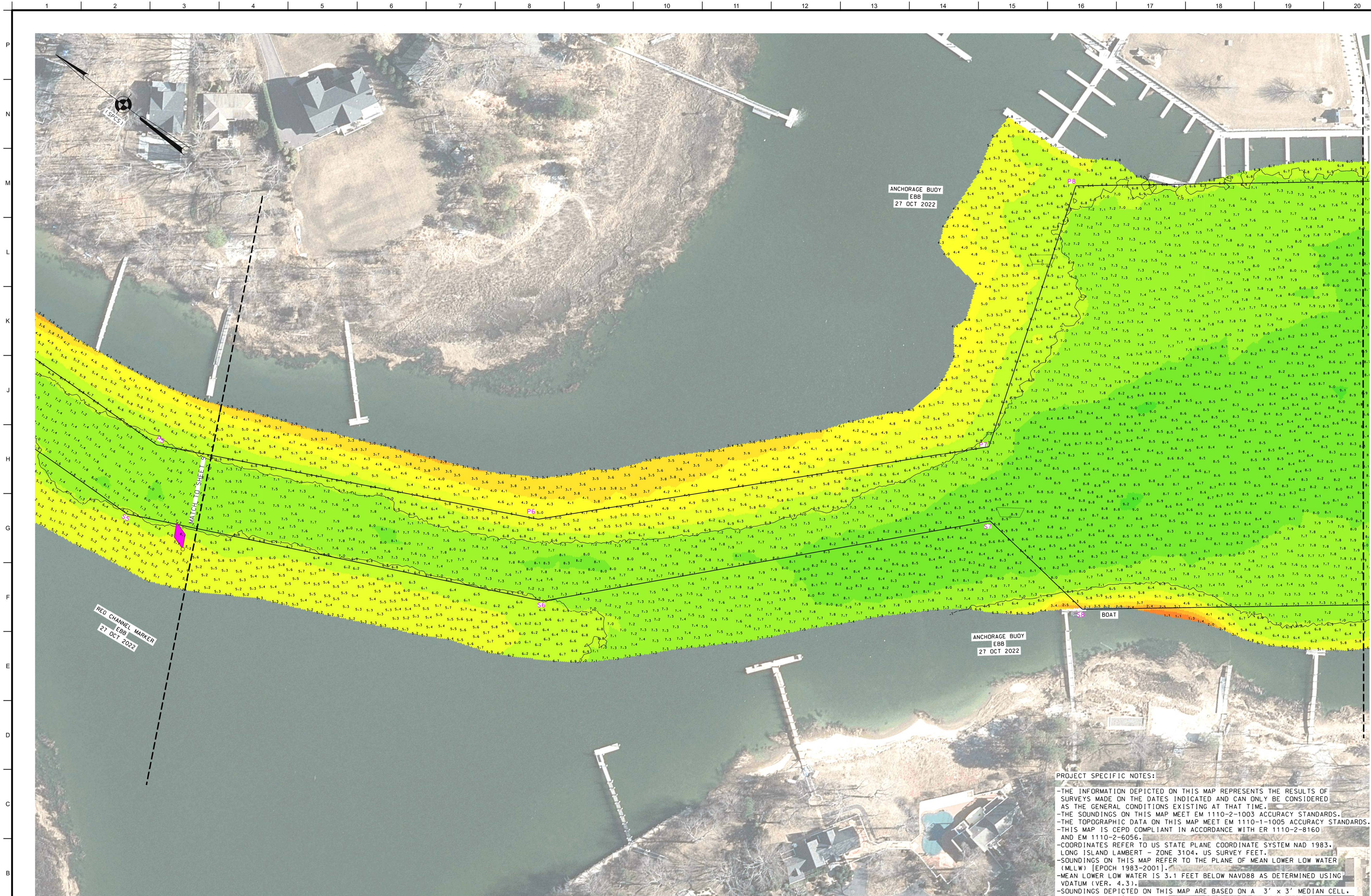
OPERATIONS DIVISION
SURVEY SECTION
CCNAN-OP-SS

MATTITUCK CHANNEL
NEW YORK

CONDITION SURVEY

VH-104

4 OF 11



0 50' 100'

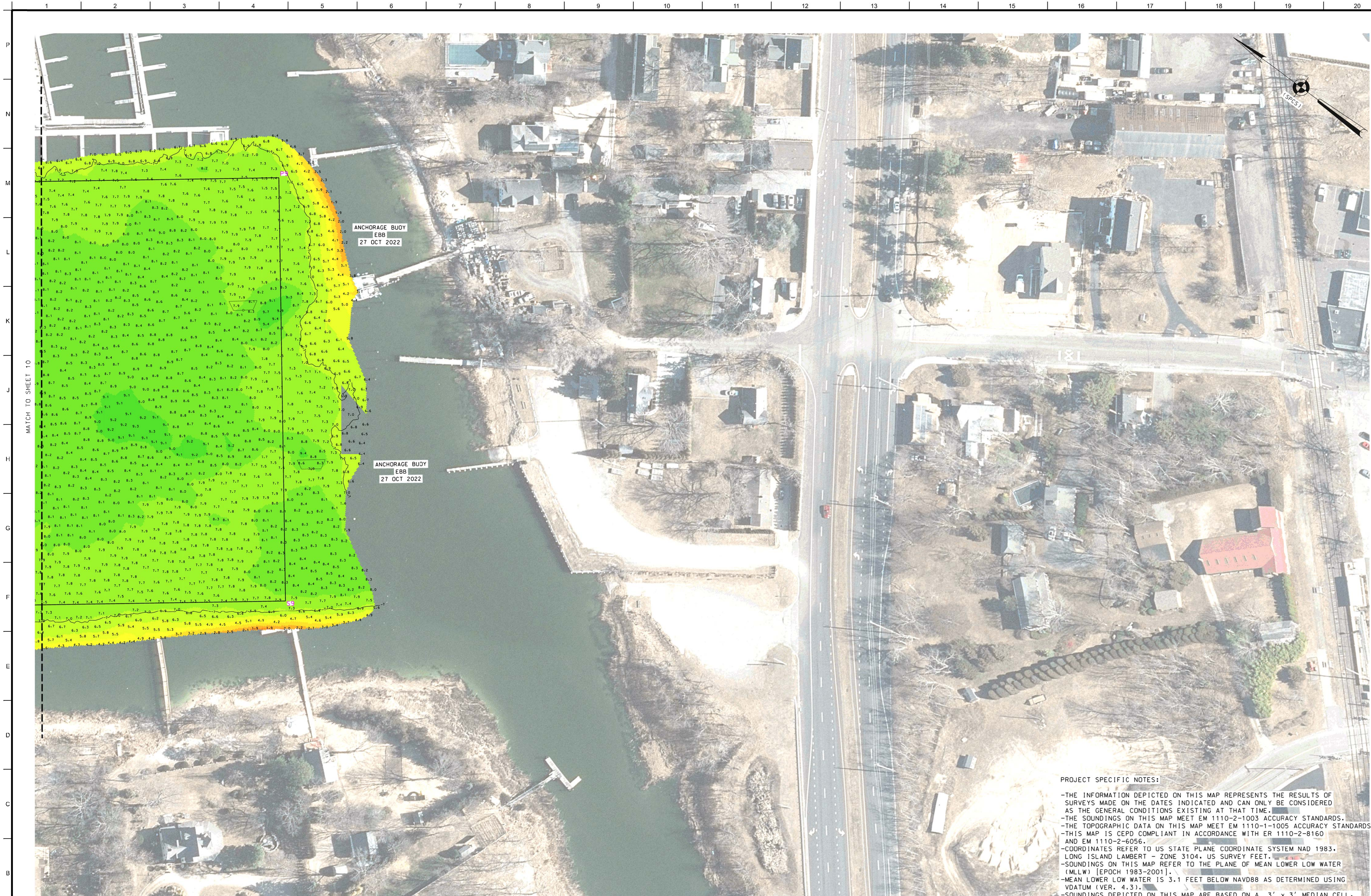
NSRS BENCHMARK		LOCAL CONTROL DATA	
BENCHMARK: A 374	(PID: LX0485)	BENCHMARK: 851 2668 A	(PID: BBC271)
ELEVATION: 58.21'	(NAVD 1988)	ELEVATION: 9.96'	(NAVD 1988)

PROJECT SPECIFIC NOTES:

- THE INFORMATION DEPICTED ON THIS MAP REPRESENTS THE RESULTS OF SURVEYS MADE ON THE DATES INDICATED AND CAN ONLY BE CONSIDERED AS THE GENERAL CONDITIONS EXISTING AT THAT TIME.
- THE SOUNDINGS ON THIS MAP MEET EM 1110-2-1003 ACCURACY STANDARDS.
- THE TOPOGRAPHIC DATA ON THIS MAP MEET EM 1110-1-1005 ACCURACY STANDARDS.
- THIS MAP IS CEPO COMPLIANT IN ACCORDANCE WITH ER 1110-2-8160 AND EM 1110-2-6056.
- COORDINATES REFER TO US STATE PLANE COORDINATE SYSTEM NAD 1983, LONG ISLAND LAMBERT - ZONE 3104, US SURVEY FEET.
- SOUNDINGS ON THIS MAP REFER TO THE PLANE OF MEAN LOWER LOW WATER (MLLW) [EPOCH 1983-2001].
- MEAN LOWER LOW WATER IS 3.1 FEET BELOW NAVD88 AS DETERMINED USING VDATUM (VER. 4.3).
- SOUNDINGS DEPICTED ON THIS MAP ARE BASED ON A 3' x 3' MEDIAN CELL, SORTED TO A 10' INTERVAL.
- CONTOURS ON THIS MAP WERE GENERATED USING THE 3 x 3 DATA SET.
- THE DATA DEPICTED ON THIS MAP SHOULD NOT BE USED FOR VOLUME CALCULATION PURPOSES.
- AERIAL IMAGERY PROVIDED BY NY STATE GIS CLEARINGHOUSE 2020 AND IS FOR ORIENTATION PURPOSES ONLY.
- THIS SURVEY WAS PERFORMED USING REAL TIME KINEMATIC GPS FROM STATION "RTK TUCK".

US ARMY CORPS OF ENGINEERS
NEW YORK DISTRICT

DATES OF SURVEY: 27-31 OCT 2022		SCALE: ONE INCH = 50 FEET	
REQ. NO./FILE NO.: 5234/AL		F. FIELD BOOKS: 1052	
APPROVED: J. MICHELVEY FIELD CARTOGRAPHER		APPROVED: M. FORTE CHIEF ENGINEERING TECHNICIAN	
APPROVED: P. BLADUR LEAD CARTOGRAPHER		APPROVED: J. MRZ DEPUTY CHIEF OF SURVEY	
DATE: 3 NOVEMBER 2022		DEPARTMENT OF THE ARMY U.S. ARMY CORPS OF ENGINEERS NEW YORK DISTRICT NEW YORK, NEW YORK 10278	
MATTITUCK CHANNEL NEW YORK		OPERATIONS DIVISION SURVEY SECTION CCNAN-OP-SS	
VH-110		CONDITION SURVEY	
10 OF 11			



PROJECT SPECIFIC NOTES:

- THE INFORMATION DEPICTED ON THIS MAP REPRESENTS THE RESULTS OF SURVEYS MADE ON THE DATES INDICATED AND CAN ONLY BE CONSIDERED AS THE GENERAL CONDITIONS EXISTING AT THAT TIME.
- THE SOUNDINGS ON THIS MAP MEET EM 1110-2-1003 ACCURACY STANDARDS.
- THE TOPOGRAPHIC DATA ON THIS MAP MEET EM 1110-1-1005 ACCURACY STANDARDS.
- THIS MAP IS CEPD COMPLIANT IN ACCORDANCE WITH ER 1110-2-8160 AND EM 1110-2-6056.
- COORDINATES REFER TO US STATE PLANE COORDINATE SYSTEM NAD 1983, LONG ISLAND LAMBERT - ZONE 3104, US SURVEY FEET.
- SOUNDINGS ON THIS MAP REFER TO THE PLANE OF MEAN LOWER LOW WATER (MLLW) [EPOCH 1983-2001].
- MEAN LOWER LOW WATER IS 3.1 FEET BELOW NAVD88 AS DETERMINED USING VDUTUM (VER. 4.3).
- SOUNDINGS DEPICTED ON THIS MAP ARE BASED ON A 3' x 3' MEDIAN CELL, SORTED TO A 10' INTERVAL.
- CONTOURS ON THIS MAP WERE GENERATED USING THE 3 x 3 DATA SET.
- THE DATA DEPICTED ON THIS MAP SHOULD NOT BE USED FOR VOLUME CALCULATION PURPOSES.
- AERIAL IMAGERY PROVIDED BY NY STATE GIS CLEARINGHOUSE 2020 AND IS FOR ORIENTATION PURPOSES ONLY.
- THIS SURVEY WAS PERFORMED USING REAL TIME KINEMATIC GPS FROM STATION "RTK TUCK".

NSRS BENCHMARK	LOCAL CONTROL DATA
BENCHMARK: A 374 (PID: LX0485) ELEVATION: 58.21' (NAVD 1988)	BENCHMARK: 851 2668 A (PID: BBC271) ELEVATION: 9.96' (NAVD 1988)

US ARMY CORPS OF ENGINEERS
NEW YORK DISTRICT

DATES OF SURVEY: 27-31 OCT 2022		SCALE: ONE INCH = 50 FEET	
REQ. NO./FILE NO.: 5234/AL		FIELD BOOKS: 1052	
APPROVED: J. MICKEY FIELD CARTOGRAPHER		APPROVED: M. FORTE CHIEF ENGINEERING TECHNICIAN	
APPROVED: P. BALDWIN LEAD CARTOGRAPHER		APPROVED: J. MGAZ DEPUTY CHIEF OF SURVEY	
DATE: 3 NOVEMBER 2022			
DEPARTMENT OF THE ARMY U.S. ARMY CORPS OF ENGINEERS NEW YORK DISTRICT NEW YORK, NEW YORK 10278		OPERATIONS DIVISION SURVEY SECTION CCNAN-OP-SS	
MATTITUCK CHANNEL NEW YORK		CONDITION SURVEY	
VH-111		11 OF 11	