

US ARMY CORPS OF ENGINEERS NEW YORK DISTRICT

	SC	SC
	PR	MP

DATE: _____
 DATES OF SURVEY: _____
 JULY 2022
 REG. NO./FILE NO.: 15200/N4

SCALE: _____
 ONE INCH = 100 FEET
 FIELD BOOKS: _____
 DNATO _____

APPROVED: M. APPEL, FIELD CARTOGRAPHER
 APPROVED: M. FORTE, CIVIL ENGINEERING TECHNICIAN
 APPROVED: P. BLODOR, LEAD CARTOGRAPHER
 APPROVED: J. WREZ, CHIEF OF SURVEY
 DATE: JULY 17, 2022

DEPARTMENT OF THE ARMY
 U.S. ARMY CORPS OF ENGINEERS
 NEW YORK DISTRICT
 NEW YORK, NEW YORK 10278
 OPERATIONS DIVISION
 SURVEY SECTION
 CENAN-OP-SS

EAST CHESTER CREEK
 NEW YORK
 CONDITION SURVEY

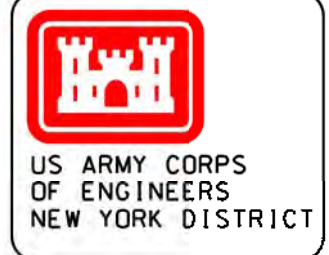
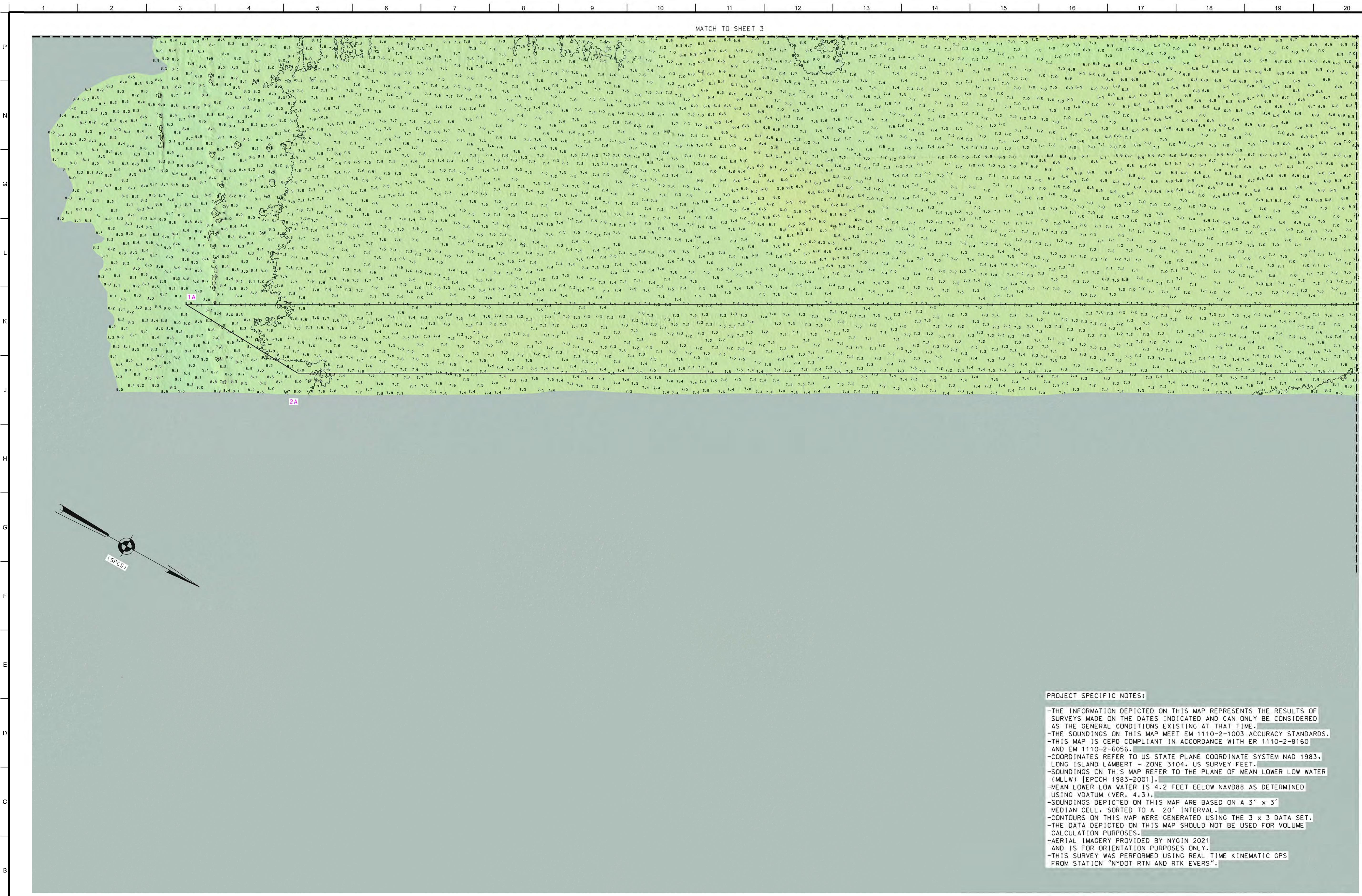
VH-101
 1 OF 12

PROJECT SPECIFIC NOTES:

- THE INFORMATION DEPICTED ON THIS MAP REPRESENTS THE RESULTS OF SURVEYS MADE ON THE DATES INDICATED AND CAN ONLY BE CONSIDERED AS THE GENERAL CONDITIONS EXISTING AT THAT TIME.
- THE SOUNDINGS ON THIS MAP MEET EM 1110-2-1003 ACCURACY STANDARDS.
- THIS MAP IS CEPD COMPLIANT IN ACCORDANCE WITH ER 1110-2-8160 AND EM 1110-2-6056.
- COORDINATES REFER TO US STATE PLANE COORDINATE SYSTEM NAD 1983, LONG ISLAND LAMBERT - ZONE 3104, US SURVEY FEET.
- SOUNDINGS ON THIS MAP REFER TO THE PLANE OF MEAN LOWER LOW WATER (MLLW) [EPOCH 1983-2001].
- MEAN LOWER LOW WATER IS 4.2 FEET BELOW NAVD88 AS DETERMINED USING VDATUM (VER. 4.3).
- SOUNDINGS DEPICTED ON THIS MAP ARE BASED ON A 3' x 3' MEDIAN CELL, SORTED TO A 20' INTERVAL.
- CONTOURS ON THIS MAP WERE GENERATED USING THE 3 x 3 DATA SET.
- THE DATA DEPICTED ON THIS MAP SHOULD NOT BE USED FOR VOLUME CALCULATION PURPOSES.
- AERIAL IMAGERY PROVIDED BY NYGIN 2021 AND IS FOR ORIENTATION PURPOSES ONLY.
- THIS SURVEY WAS PERFORMED USING REAL TIME KINEMATIC GPS FROM STATION "NYDOT RTN AND RTK EVERS".

LOCAL CONTROL DATA	
BENCHMARK: D SWAIN	
ELEVATION: 11.51'	(NAVD 1988)

NSRS BENCHMARK	
BENCHMARK: Y 35'	(PID:KU1153)
ELEVATION: 98.75'	(NAVD 1988)



US ARMY CORPS OF ENGINEERS
NEW YORK DISTRICT

SC	SC
MP	MP

DATES OF SURVEY:
21-25-26-27-28 JUL 2022
1 AUGUST 2022

REQ. NO./FILE NO.: 15200/NA/AL

SCALE: ONE INCH = 100 FEET

FIELD BOOKS: DINAIO

APPROVED: M. APPEL FIELD CARTOGRAPHER
APPROVED: M. FORTE CIVIL ENGINEERING TECHNICIAN
APPROVED: P. BRADSHAW LEAD CARTOGRAPHER
APPROVED: J. MRSZ GRIFFIN CHIEF OF SURVEY

DATE: JULY 17, 2022

DEPARTMENT OF THE ARMY
U.S. ARMY CORPS OF ENGINEERS
NEW YORK DISTRICT
NEW YORK, NEW YORK 10278

OPERATIONS DIVISION
SURVEY SECTION
CENAN-OP-SS

EAST CHESTER CREEK
NEW YORK

CONDITION SURVEY

VH-102

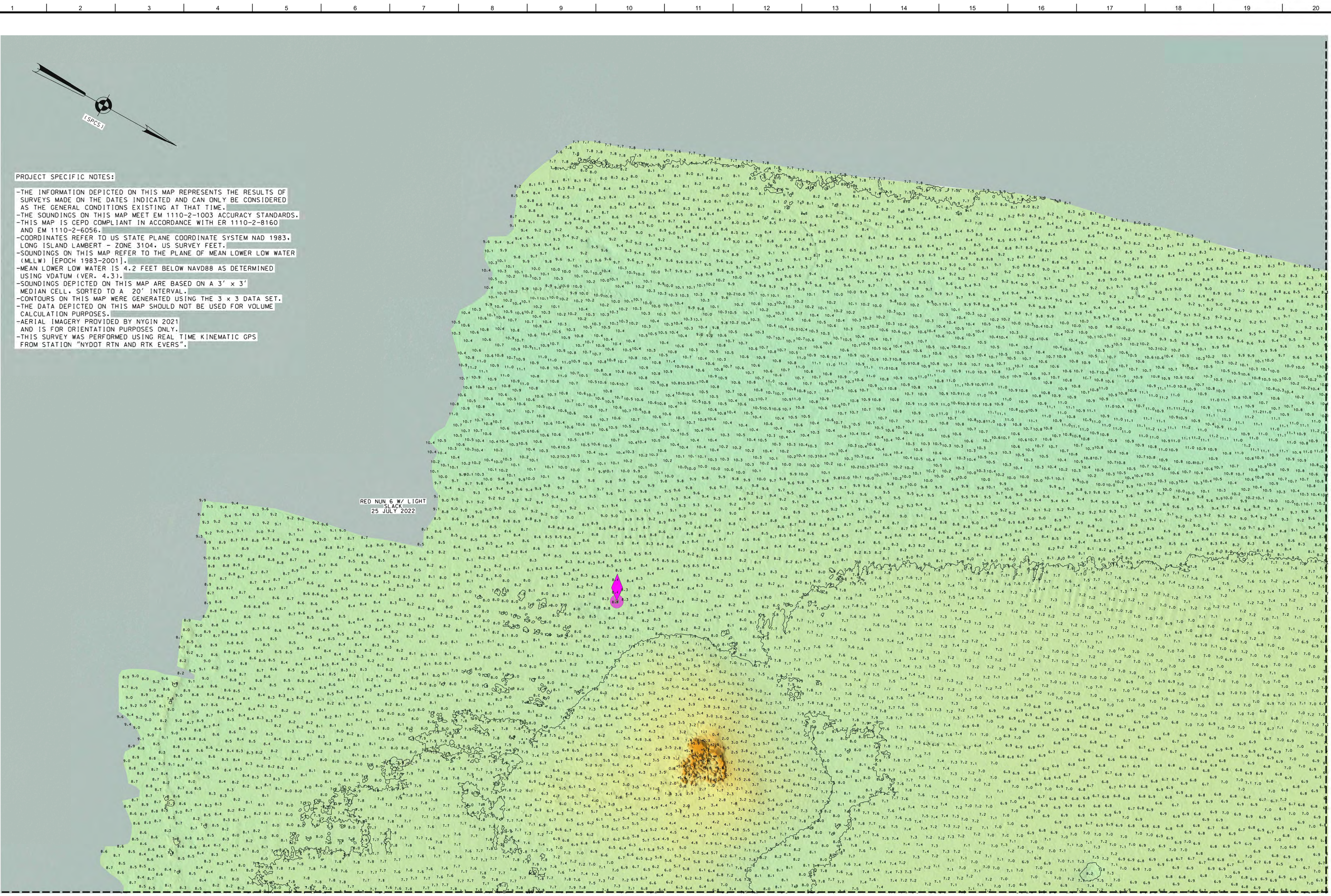
2 OF 12

PROJECT SPECIFIC NOTES:

- THE INFORMATION DEPICTED ON THIS MAP REPRESENTS THE RESULTS OF SURVEYS MADE ON THE DATES INDICATED AND CAN ONLY BE CONSIDERED AS THE GENERAL CONDITIONS EXISTING AT THAT TIME.
- THE SOUNDINGS ON THIS MAP MEET EM 1110-2-1003 ACCURACY STANDARDS.
- THIS MAP IS CEPD COMPLIANT IN ACCORDANCE WITH ER 1110-2-8160 AND EM 1110-2-6056.
- COORDINATES REFER TO US STATE PLANE COORDINATE SYSTEM NAD 1983, LONG ISLAND LAMBERT - ZONE 3104, US SURVEY FEET.
- SOUNDINGS ON THIS MAP REFER TO THE PLANE OF MEAN LOWER LOW WATER (MLLW) [EPOCH 1983-2001].
- MEAN LOWER LOW WATER IS 4.2 FEET BELOW NAVD88 AS DETERMINED USING VDATUM (VER. 4.3).
- SOUNDINGS DEPICTED ON THIS MAP ARE BASED ON A 3' x 3' MEDIAN CELL, SORTED TO A 20' INTERVAL.
- CONTOURS ON THIS MAP WERE GENERATED USING THE 3 x 3 DATA SET.
- THE DATA DEPICTED ON THIS MAP SHOULD NOT BE USED FOR VOLUME CALCULATION PURPOSES.
- AERIAL IMAGERY PROVIDED BY NYGIN 2021 AND IS FOR ORIENTATION PURPOSES ONLY.
- THIS SURVEY WAS PERFORMED USING REAL TIME KINEMATIC GPS FROM STATION "NYDOT RTN AND RTK EVERS".

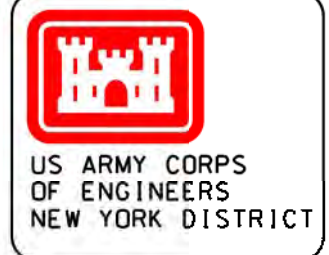
LOCAL CONTROL DATA	
BENCHMARK: D SWAIN	(NAVD 1988)
ELEVATION: 11.51'	

NSRS BENCHMARK	
BENCHMARK: Y 351	(PID:KUI153)
ELEVATION: 98.75'	(NAVD 1988)



PROJECT SPECIFIC NOTES:

- THE INFORMATION DEPICTED ON THIS MAP REPRESENTS THE RESULTS OF SURVEYS MADE ON THE DATES INDICATED AND CAN ONLY BE CONSIDERED AS THE GENERAL CONDITIONS EXISTING AT THAT TIME.
- THE SOUNDINGS ON THIS MAP MEET EM 1110-2-1003 ACCURACY STANDARDS.
- THIS MAP IS CEPD COMPLIANT IN ACCORDANCE WITH ER 1110-2-8160 AND EM 1110-2-6056.
- COORDINATES REFER TO US STATE PLANE COORDINATE SYSTEM NAD 1983, LONG ISLAND LAMBERT - ZONE 3104, US SURVEY FEET.
- SOUNDINGS ON THIS MAP REFER TO THE PLANE OF MEAN LOWER LOW WATER (MLLW) [EPOCH 1983-2001].
- MEAN LOWER LOW WATER IS 4.2 FEET BELOW NAVD88 AS DETERMINED USING VDATUM (VER. 4.3).
- SOUNDINGS DEPICTED ON THIS MAP ARE BASED ON A 3' x 3' MEDIAN CELL, SORTED TO A 20' INTERVAL.
- CONTOURS ON THIS MAP WERE GENERATED USING THE 3 x 3 DATA SET.
- THE DATA DEPICTED ON THIS MAP SHOULD NOT BE USED FOR VOLUME CALCULATION PURPOSES.
- AERIAL IMAGERY PROVIDED BY NYGIN 2021 AND IS FOR ORIENTATION PURPOSES ONLY.
- THIS SURVEY WAS PERFORMED USING REAL TIME KINEMATIC GPS FROM STATION "NYDOT RTN AND RTK EVERS".



US ARMY CORPS OF ENGINEERS
NEW YORK DISTRICT

SC	SC
PR	MP

DATES OF SURVEY:
21-25-26-27-28 JULY 2022
1 AUGUST 2022

SCALE: ONE INCH = 100 FEET
FIELD BOOKS: DINA10

APPROVED: M. APPEL (FIELD CARTOGRAPHER)
APPROVED: M. FORBIE (ENGINEERING TECHNICIAN)
APPROVED: P. BRADSHAW (LEAD CARTOGRAPHER)
APPROVED: J. WREZ (DEPUTY CHIEF OF SURVEY)
DATE: 3 AUGUST 2022

DEPARTMENT OF THE ARMY
U.S. ARMY CORPS OF ENGINEERS
NEW YORK DISTRICT
NEW YORK, NEW YORK 10278
OPERATIONS DIVISION
SURVEY SECTION
CENAN-OP-SS

EAST CHESTER CREEK
NEW YORK
CONDITION SURVEY

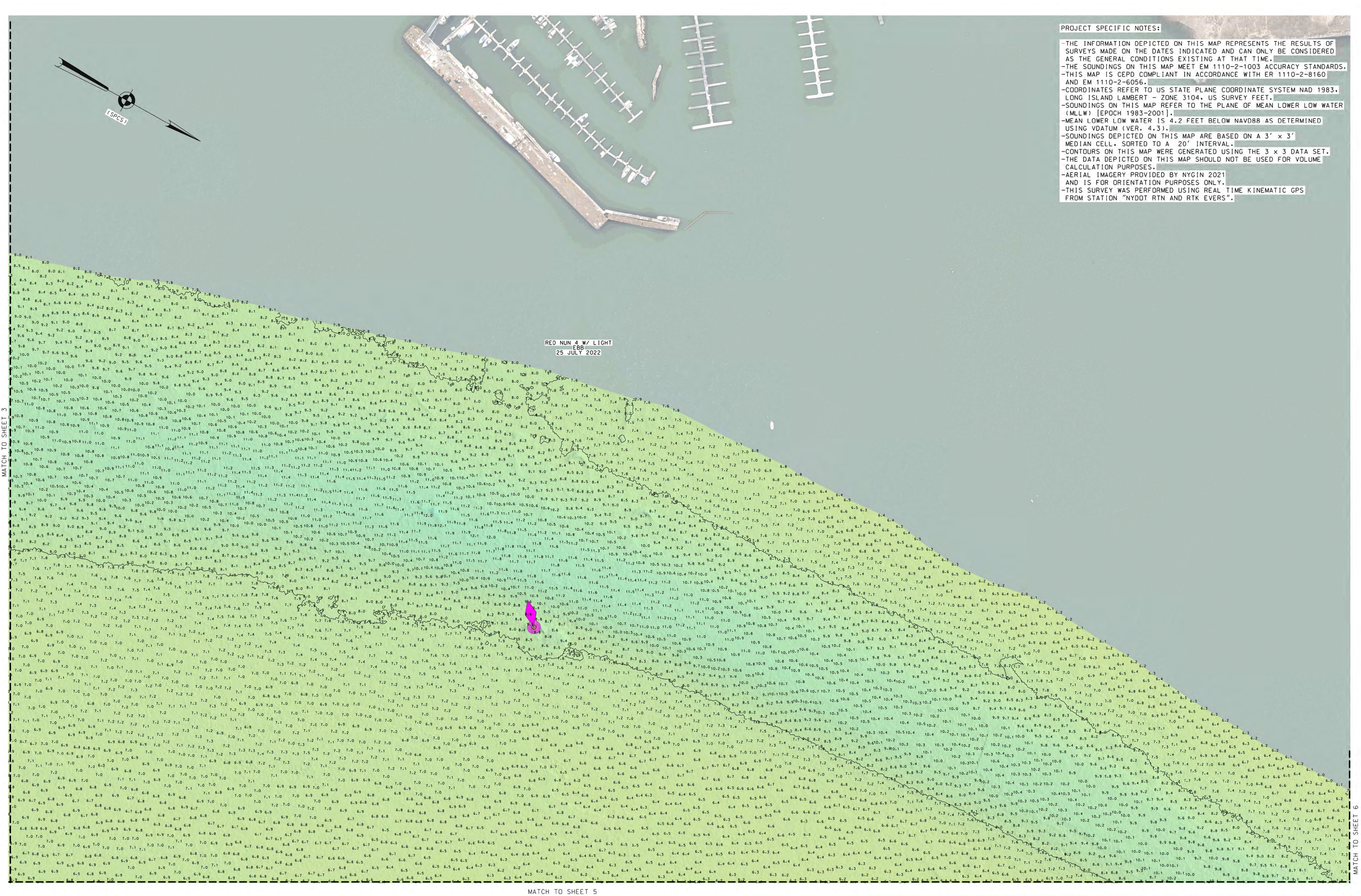
VH-103
3 OF 12

LOCAL CONTROL DATA
BENCHMARK: D SWAIN
ELEVATION: 11.51' (NAVD 1988)

NSRS BENCHMARK
BENCHMARK: Y 351 (PID:KU1153)
ELEVATION: 98.75' (NAVD 1988)

MATCH TO SHEET 4

MATCH TO SHEET 2



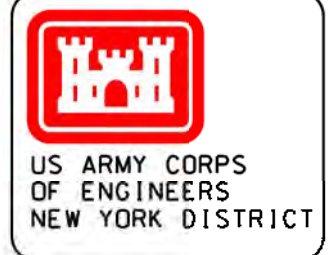
PROJECT SPECIFIC NOTES:

- THE INFORMATION DEPICTED ON THIS MAP REPRESENTS THE RESULTS OF SURVEYS MADE ON THE DATES INDICATED AND CAN ONLY BE CONSIDERED AS THE GENERAL CONDITIONS EXISTING AT THAT TIME.
- THE SOUNDINGS ON THIS MAP MEET EM 1110-2-1003 ACCURACY STANDARDS.
- THIS MAP IS CEPD COMPLIANT IN ACCORDANCE WITH ER 1110-2-8160 AND EM 1110-2-6056.
- COORDINATES REFER TO US STATE PLANE COORDINATE SYSTEM NAD 1983, LONG ISLAND LAMBERT - ZONE 3104, US SURVEY FEET.
- SOUNDINGS ON THIS MAP REFER TO THE PLANE OF MEAN LOWER LOW WATER (MLLW) [EPOCH 1983-2001].
- MEAN LOWER LOW WATER IS 4.2 FEET BELOW NAVD88 AS DETERMINED USING VDATUM (VER. 4.3).
- SOUNDINGS DEPICTED ON THIS MAP ARE BASED ON A 3' x 3' MEDIAN CELL, SORTED TO A 20' INTERVAL.
- CONTOURS ON THIS MAP WERE GENERATED USING THE 3 x 3 DATA SET.
- THE DATA DEPICTED ON THIS MAP SHOULD NOT BE USED FOR VOLUME CALCULATION PURPOSES.
- AERIAL IMAGERY PROVIDED BY NYGIN 2021 AND IS FOR ORIENTATION PURPOSES ONLY.
- THIS SURVEY WAS PERFORMED USING REAL TIME KINEMATIC GPS FROM STATION "NYDOT RTN AND RTK EVERS".

RED NUN 4 W/ LIGHT
EBB
25 JULY 2022

MATCH TO SHEET B

MATCH TO SHEET C



US ARMY CORPS OF ENGINEERS
NEW YORK DISTRICT

PR	SC
MP	SC

DATES OF SURVEY: 21-25-26-27-28 JULY 2022 1 AUGUST 2022	REO. NO./FILE NO.: 15200/N4/AL
---	--------------------------------

SCALE: ONE INCH = 100 FEET	FIELD BOOKS: DNATO
-------------------------------	-----------------------

APPROVED: M. APPEL FIELD ENGINEER	APPROVED: M. FORTE CIVIL ENGINEERING TECHNICIAN
APPROVED: P. BRADUS LEAD ENGINEER	APPROVED: J. MREZ CHIEF OF SURVEY
DATE: JULY 17, 2022	

DEPARTMENT OF THE ARMY
U.S. ARMY CORPS OF ENGINEERS
NEW YORK DISTRICT
NEW YORK, NEW YORK 10278

OPERATIONS DIVISION
SURVEY SECTION
CENAN-OP-SS

EAST CHESTER CREEK
NEW YORK

CONDITION SURVEY

LOCAL CONTROL DATA		NSRS BENCHMARK	
BENCHMARK: D SWAIN	ELEVATION: 11.51'	BENCHMARK: Y 351	ELEVATION: 98.75'
	(NAVD 1988)	(PID:KUI153)	(NAVD 1988)

MATCH TO SHEET 4



PROJECT SPECIFIC NOTES:

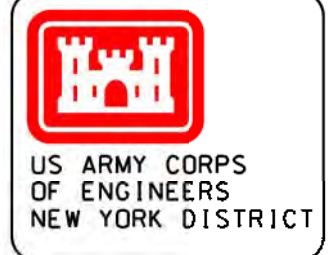
- THE INFORMATION DEPICTED ON THIS MAP REPRESENTS THE RESULTS OF SURVEYS MADE ON THE DATES INDICATED AND CAN ONLY BE CONSIDERED AS THE GENERAL CONDITIONS EXISTING AT THAT TIME.
- THE SOUNDINGS ON THIS MAP MEET EM 1110-2-1003 ACCURACY STANDARDS.
- THIS MAP IS CEPT COMPLIANT IN ACCORDANCE WITH ER 1110-2-8160 AND EM 1110-2-6056.
- COORDINATES REFER TO US STATE PLANE COORDINATE SYSTEM NAD 1983, LONG ISLAND LAMBERT - ZONE 3104, US SURVEY FEET.
- SOUNDINGS ON THIS MAP REFER TO THE PLANE OF MEAN LOWER LOW WATER (MLLW) [EPOCH 1983-2001].
- MEAN LOWER LOW WATER IS 4.2 FEET BELOW NAVD88 AS DETERMINED USING VDATUM (VER. 4.3).
- SOUNDINGS DEPICTED ON THIS MAP ARE BASED ON A 3' x 3' MEDIAN CELL, SORTED TO A 20' INTERVAL.
- CONTOURS ON THIS MAP WERE GENERATED USING THE 3 x 3 DATA SET.
- THE DATA DEPICTED ON THIS MAP SHOULD NOT BE USED FOR VOLUME CALCULATION PURPOSES.
- AERIAL IMAGERY PROVIDED BY NYGIN 2021 AND IS FOR ORIENTATION PURPOSES ONLY.
- THIS SURVEY WAS PERFORMED USING REAL TIME KINEMATIC GPS FROM STATION "NYDOT RTN AND RTK EVERS".

LOCAL CONTROL DATA

BENCHMARK: D SWAIN
ELEVATION: 11.51' (NAVD 1988)

NSRS BENCHMARK

BENCHMARK: Y 351 (PID:KU1153)
ELEVATION: 98.75' (NAVD 1988)



US ARMY CORPS OF ENGINEERS
NEW YORK DISTRICT

PR	SC
MP	SC

DATES OF SURVEY:
21-25-26-27-28 JULY 2022
1 AUGUST 2022

REQ. NO./FILE NO.: 15200/NA/AL

SCALE: ONE INCH = 100 FEET

FIELD BOOKS: DINA10

APPROVED: M. APPELD FIELD CARTOGRAPHER
APPROVED: M. FORTE CIVIL ENGINEERING TECHNICIAN
APPROVED: P. BRADUER LEAD CARTOGRAPHER
APPROVED: J. MREZ DEPUTY CHIEF OF SURVEY
DATE: JULY 17, 2022

DEPARTMENT OF THE ARMY
U.S. ARMY CORPS OF ENGINEERS
NEW YORK DISTRICT
NEW YORK, NEW YORK 10278

OPERATIONS DIVISION
SURVEY SECTION
CENAN-OP-SS

EAST CHESTER CREEK
NEW YORK

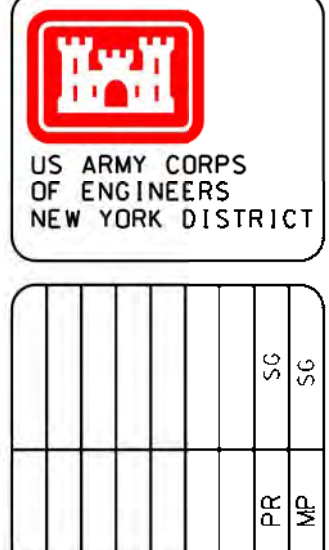
CONDITION SURVEY

VH-105
5 OF 12



PROJECT SPECIFIC NOTES:

- THE INFORMATION DEPICTED ON THIS MAP REPRESENTS THE RESULTS OF SURVEYS MADE ON THE DATES INDICATED AND CAN ONLY BE CONSIDERED AS THE GENERAL CONDITIONS EXISTING AT THAT TIME.
- THE SOUNDINGS ON THIS MAP MEET EM 1110-2-1003 ACCURACY STANDARDS.
- THIS MAP IS CEPD COMPLIANT IN ACCORDANCE WITH ER 1110-2-8160 AND EM 1110-2-6056.
- COORDINATES REFER TO US STATE PLANE COORDINATE SYSTEM NAD 1983, LONG ISLAND LAMBERT - ZONE 3104, US SURVEY FEET.
- SOUNDINGS ON THIS MAP REFER TO THE PLANE OF MEAN LOWER LOW WATER (MLLW) [EPOCH 1983-2001].
- MEAN LOWER LOW WATER IS 4.2 FEET BELOW NAVD88 AS DETERMINED USING VDATUM (VER. 4.3).
- SOUNDINGS DEPICTED ON THIS MAP ARE BASED ON A 3' x 3' MEDIAN CELL, SORTED TO A 20' INTERVAL.
- CONTOURS ON THIS MAP WERE GENERATED USING THE 3 x 3 DATA SET.
- THE DATA DEPICTED ON THIS MAP SHOULD NOT BE USED FOR VOLUME CALCULATION PURPOSES.
- AERIAL IMAGERY PROVIDED BY NYGIN 2021 AND IS FOR ORIENTATION PURPOSES ONLY.
- THIS SURVEY WAS PERFORMED USING REAL TIME KINEMATIC GPS FROM STATION "NYDOT RTN AND RTK EVERS".



DATE OF SURVEY:	21-25-26-27-28 JULY 2022 1 AUGUST 2022	REQ. NO./FILE NO.:	15200/N4/AL
SCALE:	ONE INCH = 100 FEET	FIELD BOOKS:	DNA10

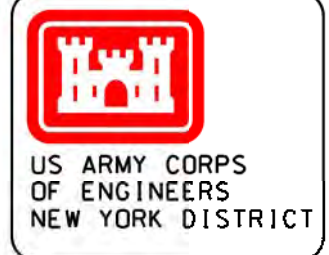
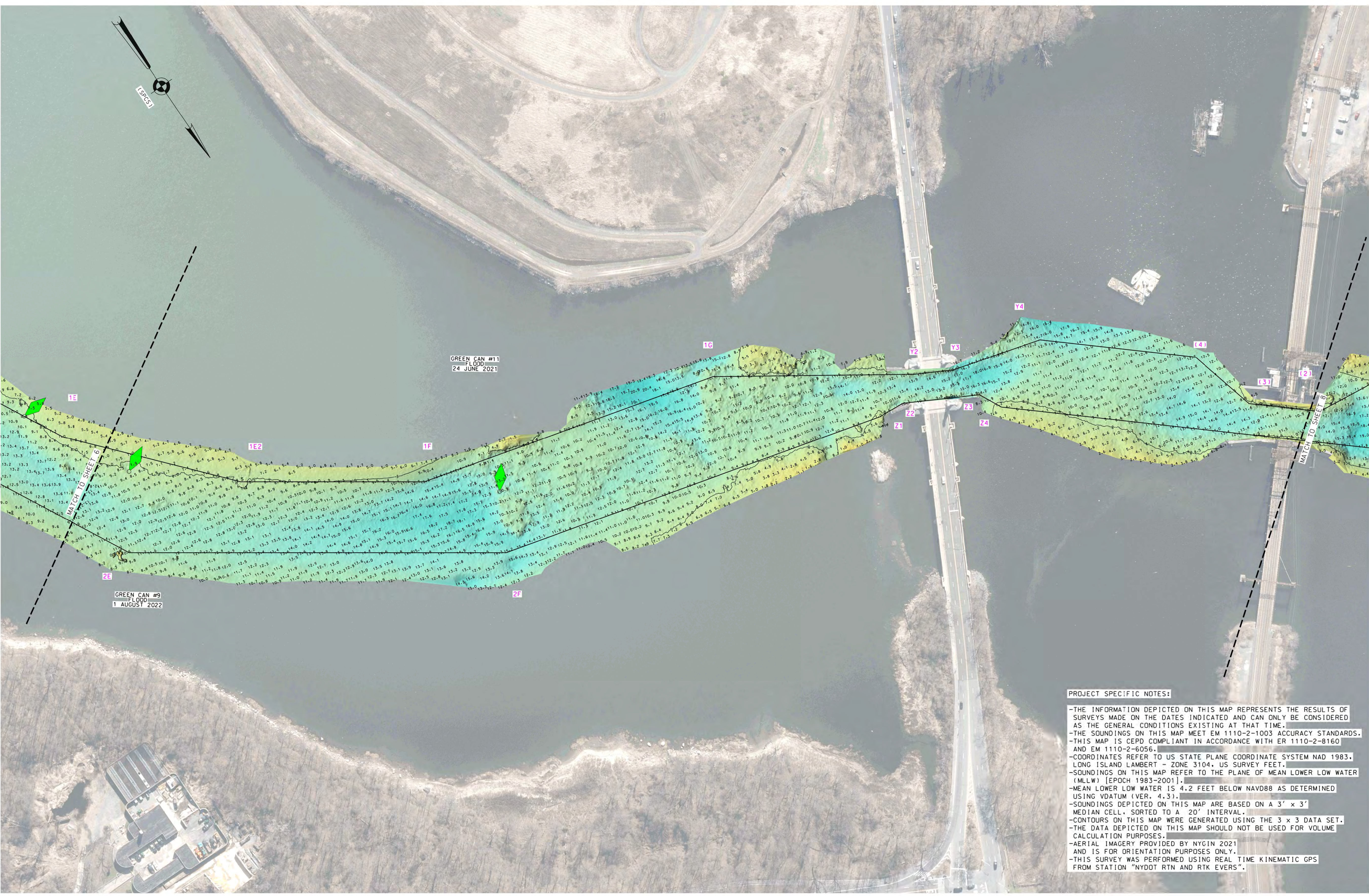
APPROVED:	M. APPEL	FIELD CARTOGRAPHER
APPROVED:	M. FORTE	CIVIL ENGINEERING TECHNICIAN
APPROVED:	P. BHADUR	LEAD CARTOGRAPHER
APPROVED:	J. WRAZ	CHIEF OF SURVEY
DATE:	JULY 17, 2022	

DEPARTMENT OF THE ARMY
U.S. ARMY CORPS OF ENGINEERS
NEW YORK DISTRICT
NEW YORK, NEW YORK 10278
OPERATIONS DIVISION
SURVEY SECTION
CENAN-OP-SS

EAST CHESTER CREEK
NEW YORK
CONDITION SURVEY

LOCAL CONTROL DATA	
BENCHMARK: D SWAIN	(NAVD 1988)
ELEVATION: 11.51'	

NSRS BENCHMARK	
BENCHMARK: Y 351	(PID:KU1153)
ELEVATION: 98.75'	(NAVD 1988)



US ARMY CORPS OF ENGINEERS
NEW YORK DISTRICT

PR	SC
MP	SC

DATES OF SURVEY:
21-25-26-27-28 JULY 2022
1 AUGUST 2022

REQ. NO./FILE NO.: 15200/NA/AL

SCALE:
ONE INCH = 100 FEET

FIELD BOOKS:
DWA10

APPROVED: M. APPEL FIELD CARTOGRAPHER
APPROVED: M. FORTE CIVIL ENGINEERING TECHNICIAN
APPROVED: P. BRADSHAW LEAD CARTOGRAPHER
APPROVED: J. MREZ GREGORY CHIEF OF SURVEY

DATE: JULY 17, 2022

DEPARTMENT OF THE ARMY
U.S. ARMY CORPS OF ENGINEERS
NEW YORK DISTRICT
NEW YORK, NEW YORK 10278

OPERATIONS DIVISION
SURVEY SECTION
CENAN-OP-SS

EAST CHESTER CREEK
NEW YORK

CONDITION SURVEY

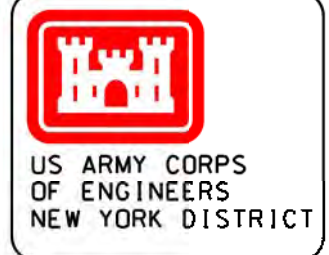
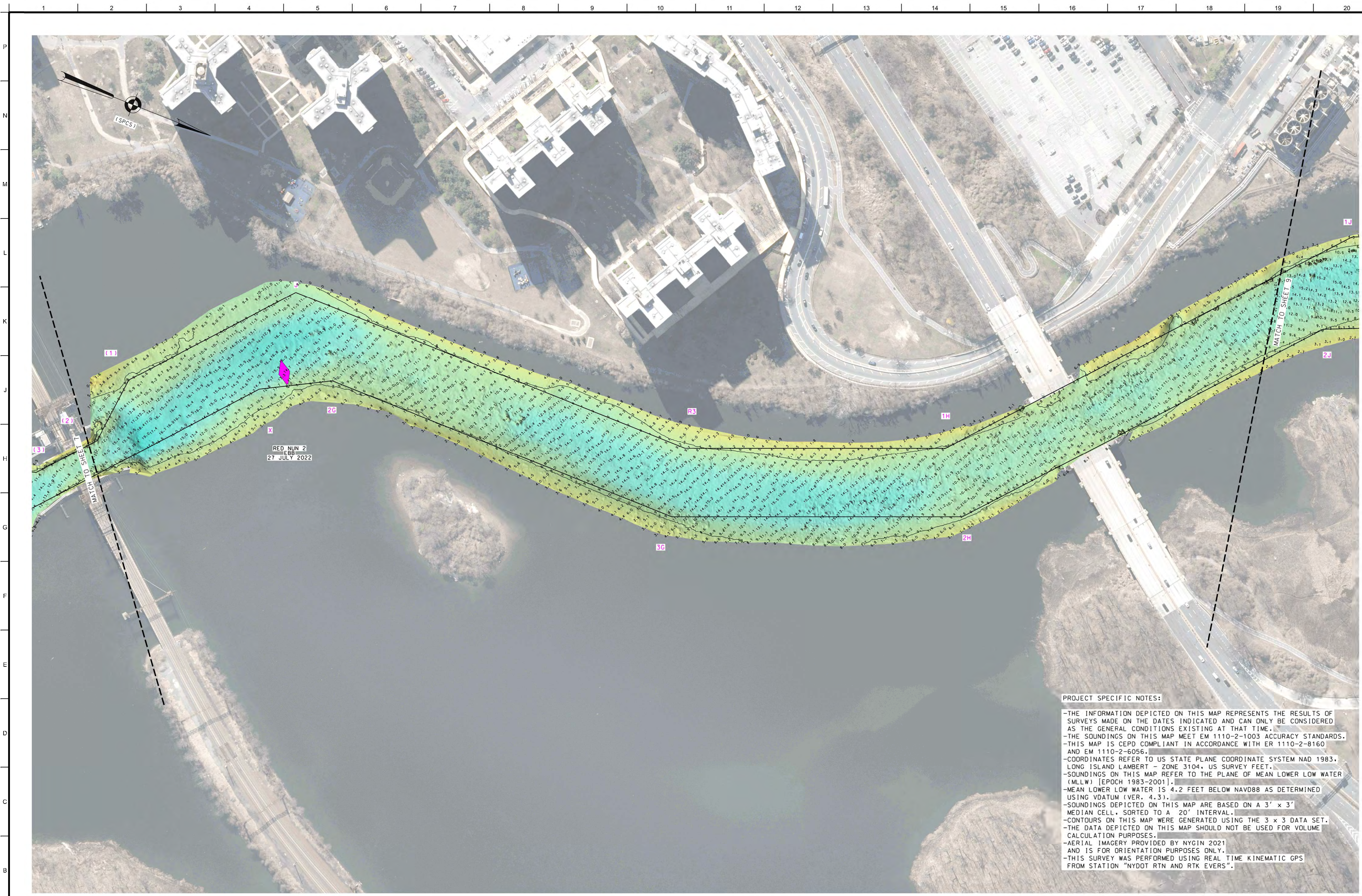
VH-107
7 OF 12

PROJECT SPECIFIC NOTES:

- THE INFORMATION DEPICTED ON THIS MAP REPRESENTS THE RESULTS OF SURVEYS MADE ON THE DATES INDICATED AND CAN ONLY BE CONSIDERED AS THE GENERAL CONDITIONS EXISTING AT THAT TIME.
- THE SOUNDINGS ON THIS MAP MEET EM 1110-2-1003 ACCURACY STANDARDS.
- THIS MAP IS CEPD COMPLIANT IN ACCORDANCE WITH ER 1110-2-8160 AND EM 1110-2-6056.
- COORDINATES REFER TO US STATE PLANE COORDINATE SYSTEM NAD 1983, LONG ISLAND LAMBERT - ZONE 3104, US SURVEY FEET.
- SOUNDINGS ON THIS MAP REFER TO THE PLANE OF MEAN LOWER LOW WATER (MLLW) [EPOCH 1983-2001].
- MEAN LOWER LOW WATER IS 4.2 FEET BELOW NAVD88 AS DETERMINED USING VDATUM (VER. 4.3).
- SOUNDINGS DEPICTED ON THIS MAP ARE BASED ON A 3' x 3' MEDIAN CELL, SORTED TO A 20' INTERVAL.
- CONTOURS ON THIS MAP WERE GENERATED USING THE 3 x 3 DATA SET.
- THE DATA DEPICTED ON THIS MAP SHOULD NOT BE USED FOR VOLUME CALCULATION PURPOSES.
- AERIAL IMAGERY PROVIDED BY NYGIN 2021 AND IS FOR ORIENTATION PURPOSES ONLY.
- THIS SURVEY WAS PERFORMED USING REAL TIME KINEMATIC GPS FROM STATION "NYDOT RTN AND RTK EVERS".

LOCAL CONTROL DATA	
BENCHMARK: D SWAIN	(NAVD 1988)
ELEVATION: 11.51'	

NSRS BENCHMARK	
BENCHMARK: Y 351	(PID:KU1153)
ELEVATION: 98.75'	(NAVD 1988)



US ARMY CORPS OF ENGINEERS
NEW YORK DISTRICT

	SC
	SC
	PR
	MP

DATES OF SURVEY:
21-25-26-27-28 JULY 2022
1 AUGUST 2022

REQ. NO./FILE NO.: 15200/NA/AL

SCALE:
ONE INCH = 100 FEET

FIELD BOOKS:
DINA10

APPROVED: M. APPEL FIELD CARTOGRAPHER
APPROVED: M. FORTE CIVIL ENGINEERING TECHNICIAN
APPROVED: P. BRADSHAW LEAD CARTOGRAPHER
APPROVED: J. MREZ CHIEF OF SURVEY

DATE: JULY 17, 2022

DEPARTMENT OF THE ARMY
U.S. ARMY CORPS OF ENGINEERS
NEW YORK DISTRICT
NEW YORK, NEW YORK 10278

OPERATIONS DIVISION
SURVEY SECTION
CENAN-OP-SS

EAST CHESTER CREEK
NEW YORK

CONDITION SURVEY

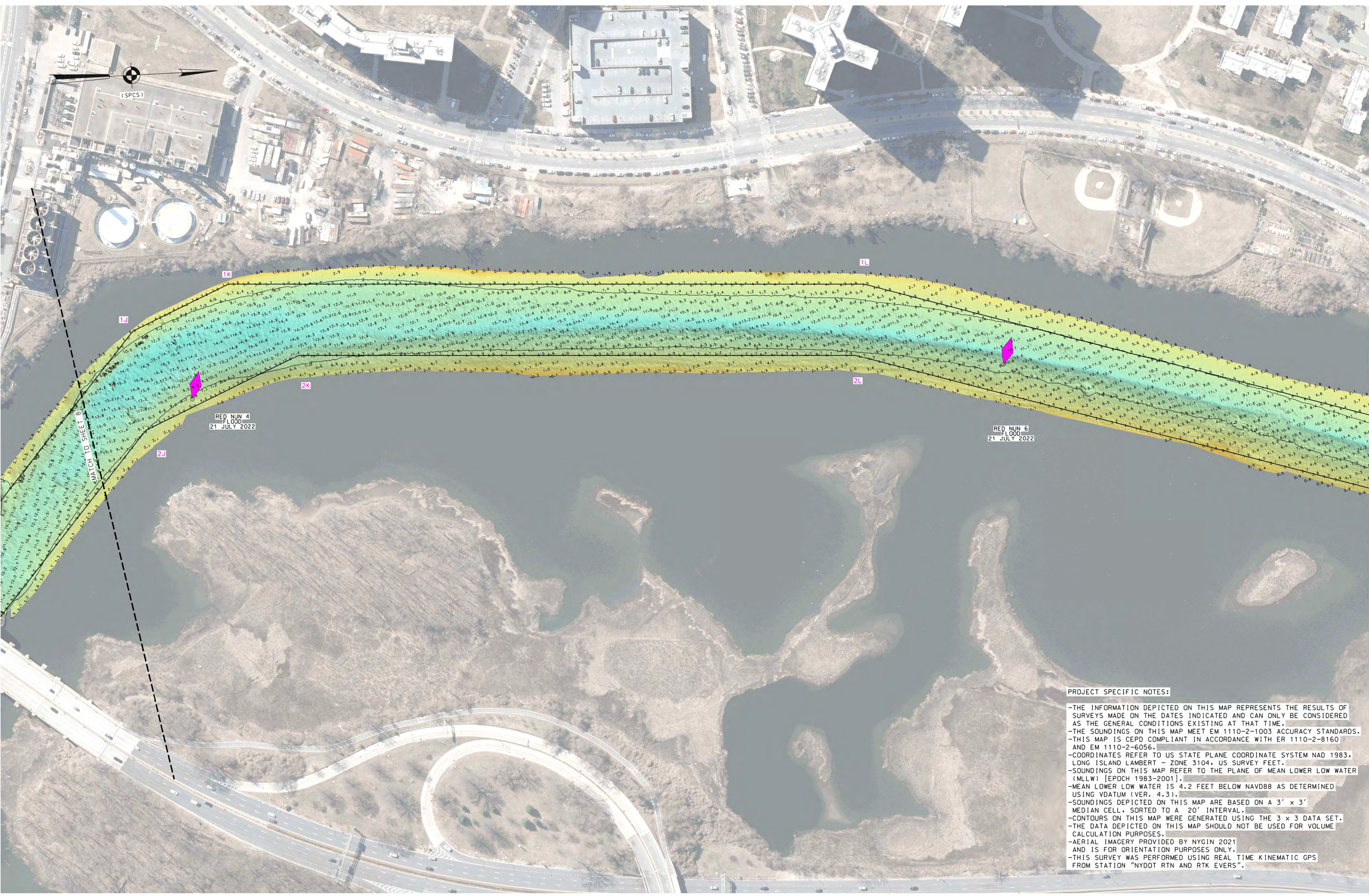
VH-108
8 OF 12

PROJECT SPECIFIC NOTES:

- THE INFORMATION DEPICTED ON THIS MAP REPRESENTS THE RESULTS OF SURVEYS MADE ON THE DATES INDICATED AND CAN ONLY BE CONSIDERED AS THE GENERAL CONDITIONS EXISTING AT THAT TIME.
- THE SOUNDINGS ON THIS MAP MEET EM 1110-2-1003 ACCURACY STANDARDS.
- THIS MAP IS CEPD COMPLIANT IN ACCORDANCE WITH ER 1110-2-8160 AND EM 1110-2-6056.
- COORDINATES REFER TO US STATE PLANE COORDINATE SYSTEM NAD 1983, LONG ISLAND LAMBERT - ZONE 3104, US SURVEY FEET.
- SOUNDINGS ON THIS MAP REFER TO THE PLANE OF MEAN LOWER LOW WATER (MLLW) [EPOCH 1983-2001].
- MEAN LOWER LOW WATER IS 4.2 FEET BELOW NAVD88 AS DETERMINED USING VDATUM (VER. 4.3).
- SOUNDINGS DEPICTED ON THIS MAP ARE BASED ON A 3' x 3' MEDIAN CELL, SORTED TO A 20' INTERVAL.
- CONTOURS ON THIS MAP WERE GENERATED USING THE 3 x 3 DATA SET.
- THE DATA DEPICTED ON THIS MAP SHOULD NOT BE USED FOR VOLUME CALCULATION PURPOSES.
- AERIAL IMAGERY PROVIDED BY NYGIN 2021 AND IS FOR ORIENTATION PURPOSES ONLY.
- THIS SURVEY WAS PERFORMED USING REAL TIME KINEMATIC GPS FROM STATION "NYDOT RTN AND RTK EVERS".

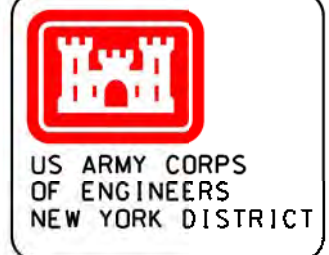
LOCAL CONTROL DATA	
BENCHMARK: D SWAIN	(NAVD 1988)
ELEVATION: 11.51'	

NSRS BENCHMARK	
BENCHMARK: Y 351	(PID:KU1153)
ELEVATION: 98.75'	(NAVD 1988)



PROJECT SPECIFIC NOTES:

- THE INFORMATION DEPICTED ON THIS MAP REPRESENTS THE RESULTS OF SURVEYS MADE ON THE DATES INDICATED AND CAN ONLY BE CONSIDERED AS THE GENERAL CONDITIONS EXISTING AT THAT TIME.
- THE SOUNDINGS ON THIS MAP MEET EM 1110-2-1003 ACCURACY STANDARDS.
- THIS MAP IS CEPO COMPLIANT IN ACCORDANCE WITH ER 1110-2-8160 AND EM 1110-2-6056.
- COORDINATES REFER TO US STATE PLANE COORDINATE SYSTEM NAD 1983, LONG ISLAND LAMBERT - ZONE 3104, US SURVEY FEET.
- SOUNDINGS ON THIS MAP REFER TO THE PLANE OF MEAN LOWER LOW WATER (MLLW) [EPOCH 1983-2001].
- MEAN LOWER LOW WATER IS 4.2 FEET BELOW NAVD88 AS DETERMINED USING VDATUM (VER. 4.3).
- SOUNDINGS DEPICTED ON THIS MAP ARE BASED ON A 3' x 3' MEDIAN CELL, SORTED TO A 20' INTERVAL.
- CONTOURS ON THIS MAP WERE GENERATED USING THE 3 x 3 DATA SET.
- THE DATA DEPICTED ON THIS MAP SHOULD NOT BE USED FOR VOLUME CALCULATION PURPOSES.
- AERIAL IMAGERY PROVIDED BY NYGIN 2021 AND IS FOR ORIENTATION PURPOSES ONLY.
- THIS SURVEY WAS PERFORMED USING REAL TIME KINEMATIC GPS FROM STATION "NYDOT RTN AND RTK EVERS".



US ARMY CORPS OF ENGINEERS
NEW YORK DISTRICT

SC	SC
MP	PR

DATES OF SURVEY:
JULY 2022

REQ. NO./FILE NO.: 15200/NA/AL

SCALE:
ONE INCH = 100 FEET

FIELD BOOKS:
DWA10

APPROVED: M. APPEL FIELD CARTOGRAPHER
APPROVED: M. FORTE CIVIL ENGINEERING TECHNICIAN
APPROVED: P. BRADY JR. LEAD CARTOGRAPHER
APPROVED: J. MRAZ CREW CHIEF OF SURVEY

DATE: JULY 17, 2022

DEPARTMENT OF THE ARMY
U.S. ARMY CORPS OF ENGINEERS
NEW YORK DISTRICT
NEW YORK, NEW YORK 10278

OPERATIONS DIVISION
SURVEY SECTION
CENAN-OP-SS

EAST CHESTER CREEK
NEW YORK

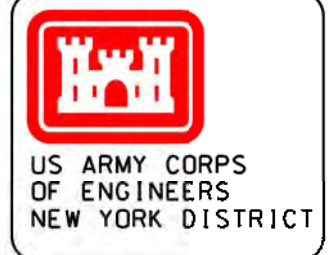
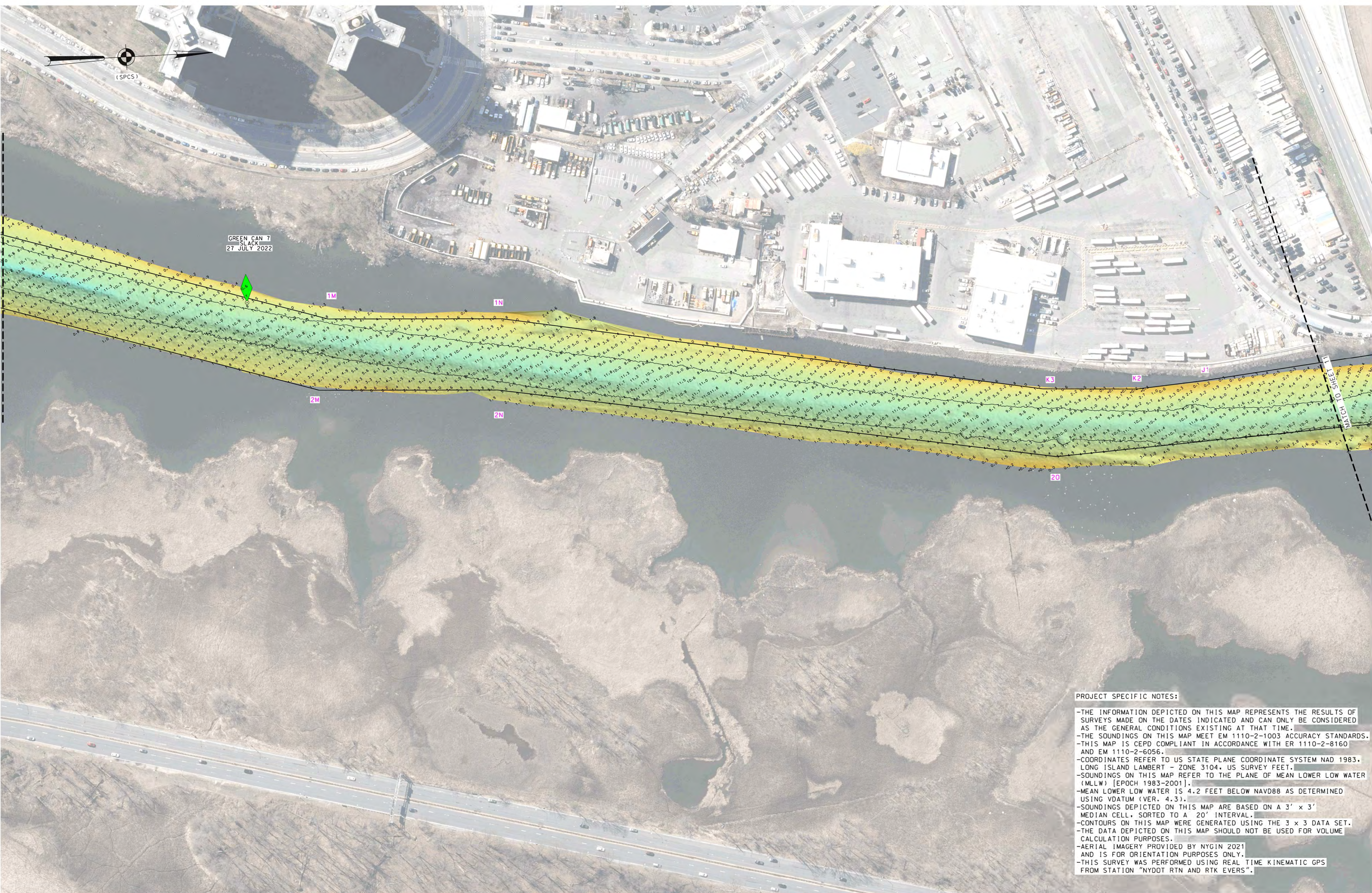
CONDITION SURVEY

VH-109
9 OF 12

LOCAL CONTROL DATA	
BENCHMARK: D SWAIN	(NAVD 1988)
ELEVATION: 11.51'	

NSRS BENCHMARK	
BENCHMARK: Y 351	(PID:KUI153)
ELEVATION: 98.75'	(NAVD 1988)

MATCH TO SHEET 10



US ARMY CORPS OF ENGINEERS
NEW YORK DISTRICT

SC	SC
MP	PR

DATES OF SURVEY:
21-25-26-27-28 JULY 2022
1 AUGUST 2022

REQ. NO./FILE NO.: 15200/N4/AL

SCALE:
ONE INCH = 100 FEET

FIELD BOOKS:
D1A10

APPROVED: M. APPEL FIELD CARTOGRAPHER
APPROVED: M. FORTE CIVIL ENGINEERING TECHNICIAN
APPROVED: P. BRADSHAW LEAD CARTOGRAPHER
APPROVED: J. MREZ DEPUTY CHIEF OF SURVEY

DATE: JULY 17, 2022

DEPARTMENT OF THE ARMY
U.S. ARMY CORPS OF ENGINEERS
NEW YORK DISTRICT
NEW YORK, NEW YORK 10278

OPERATIONS DIVISION
SURVEY SECTION
CENAN-OP-SS

EAST CHESTER CREEK
NEW YORK

CONDITION SURVEY

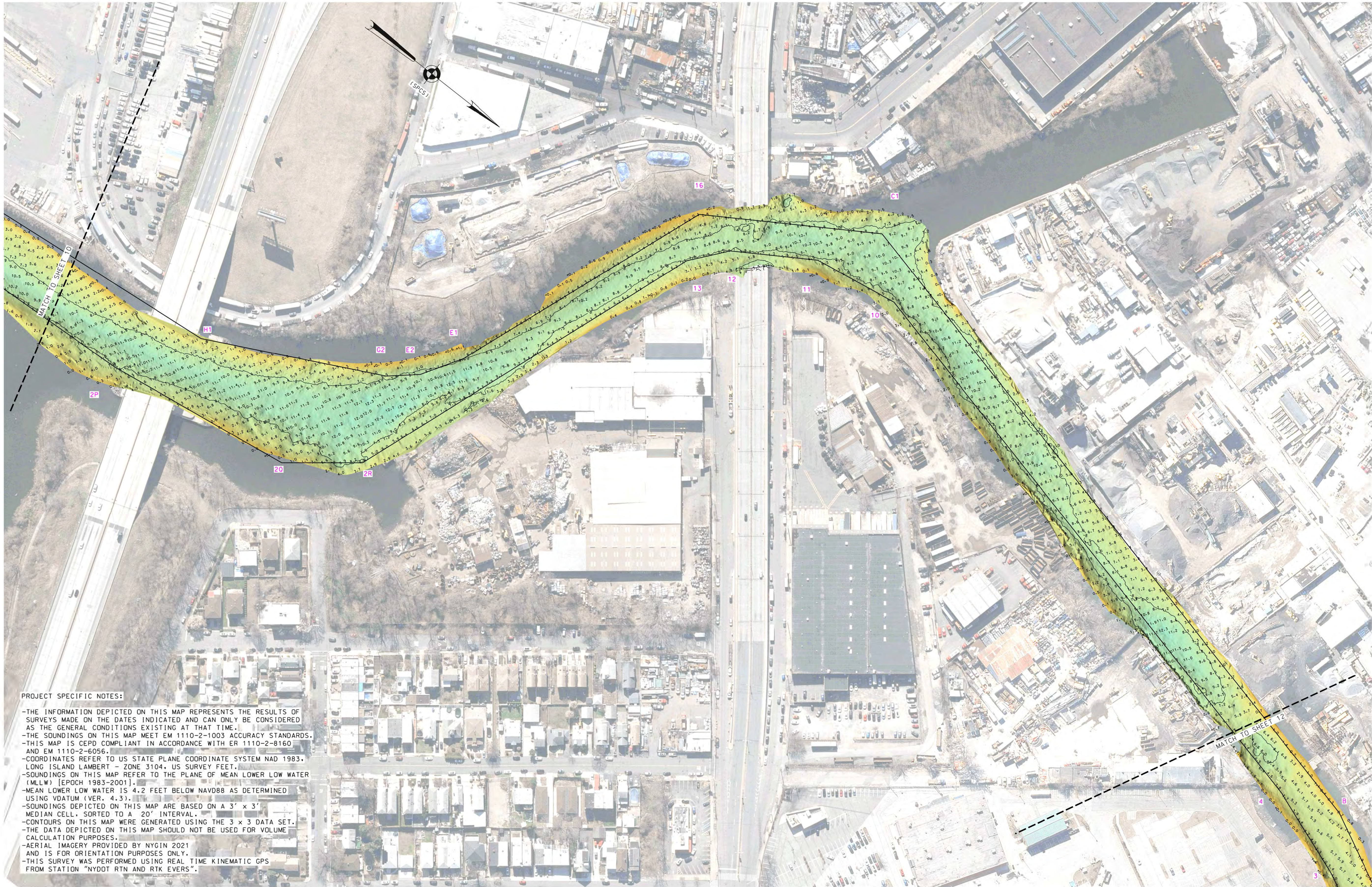
VH-110
10 OF 12

PROJECT SPECIFIC NOTES:

- THE INFORMATION DEPICTED ON THIS MAP REPRESENTS THE RESULTS OF SURVEYS MADE ON THE DATES INDICATED AND CAN ONLY BE CONSIDERED AS THE GENERAL CONDITIONS EXISTING AT THAT TIME.
- THE SOUNDINGS ON THIS MAP MEET EM 1110-2-1003 ACCURACY STANDARDS.
- THIS MAP IS CEPD COMPLIANT IN ACCORDANCE WITH ER 1110-2-8160 AND EM 1110-2-6056.
- COORDINATES REFER TO US STATE PLANE COORDINATE SYSTEM NAD 1983, LONG ISLAND LAMBERT - ZONE 3104, US SURVEY FEET.
- SOUNDINGS ON THIS MAP REFER TO THE PLANE OF MEAN LOWER LOW WATER (MLLW) [EPOCH 1983-2001].
- MEAN LOWER LOW WATER IS 4.2 FEET BELOW NAVD88 AS DETERMINED USING WDATUM (VER. 4.3).
- SOUNDINGS DEPICTED ON THIS MAP ARE BASED ON A 3' x 3' MEDIAN CELL, SORTED TO A 20' INTERVAL.
- CONTOURS ON THIS MAP WERE GENERATED USING THE 3 x 3 DATA SET.
- THE DATA DEPICTED ON THIS MAP SHOULD NOT BE USED FOR VOLUME CALCULATION PURPOSES.
- AERIAL IMAGERY PROVIDED BY NYGIN 2021 AND IS FOR ORIENTATION PURPOSES ONLY.
- THIS SURVEY WAS PERFORMED USING REAL TIME KINEMATIC GPS FROM STATION "NYDOT RTN AND RTK EVERS".

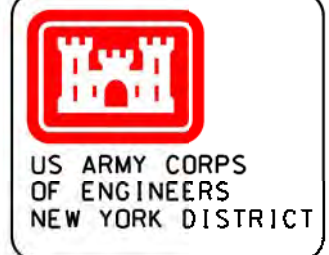
LOCAL CONTROL DATA	
BENCHMARK: D SWAIN	(NAVD 1988)
ELEVATION: 11.51'	

NSRS BENCHMARK	
BENCHMARK: Y 351	(PID:KU1153)
ELEVATION: 98.75'	(NAVD 1988)



PROJECT SPECIFIC NOTES:

- THE INFORMATION DEPICTED ON THIS MAP REPRESENTS THE RESULTS OF SURVEYS MADE ON THE DATES INDICATED AND CAN ONLY BE CONSIDERED AS THE GENERAL CONDITIONS EXISTING AT THAT TIME.
- THE SOUNDINGS ON THIS MAP MEET EM 1110-2-1003 ACCURACY STANDARDS.
- THIS MAP IS CEPD COMPLIANT IN ACCORDANCE WITH ER 1110-2-8160 AND EM 1110-2-6056.
- COORDINATES REFER TO US STATE PLANE COORDINATE SYSTEM NAD 1983, LONG ISLAND LAMBERT - ZONE 3104, US SURVEY FEET.
- SOUNDINGS ON THIS MAP REFER TO THE PLANE OF MEAN LOWER LOW WATER (MLLW) [EPOCH 1983-2001].
- MEAN LOWER LOW WATER IS 4.2 FEET BELOW NAVD88 AS DETERMINED USING VDATUM (VER. 4.3).
- SOUNDINGS DEPICTED ON THIS MAP ARE BASED ON A 3' x 3' MEDIAN CELL, SORTED TO A 20' INTERVAL.
- CONTOURS ON THIS MAP WERE GENERATED USING THE 3 x 3 DATA SET.
- THE DATA DEPICTED ON THIS MAP SHOULD NOT BE USED FOR VOLUME CALCULATION PURPOSES.
- AERIAL IMAGERY PROVIDED BY NYGIN 2021 AND IS FOR ORIENTATION PURPOSES ONLY.
- THIS SURVEY WAS PERFORMED USING REAL TIME KINEMATIC GPS FROM STATION "NYDOT RTN AND RTK EVERS".



US ARMY CORPS OF ENGINEERS
NEW YORK DISTRICT

SC	SC
MP	MP

DATES OF SURVEY:
21-25-26-27-28 JULY 2022
1 AUGUST 2022

REQ. NO./FILE NO.: 15200/N4/AL

SCALE:
ONE INCH = 100 FEET

FIELD BOOKS:
DWA10

APPROVED: M. APPEL FIELD CARTOGRAPHER
APPROVED: M. FORTE CIVIL ENGINEERING TECHNICIAN
APPROVED: P. BRADSHAW LEAD CARTOGRAPHER
APPROVED: J. MREZ GRIFFIN CHIEF OF SURVEY

DATE: JULY 17, 2022

DEPARTMENT OF THE ARMY
U.S. ARMY CORPS OF ENGINEERS
NEW YORK DISTRICT
NEW YORK, NEW YORK 10278

OPERATIONS DIVISION
SURVEY SECTION
CENAN-OP-SS

EAST CHESTER CREEK
NEW YORK

CONDITION SURVEY

LOCAL CONTROL DATA	
BENCHMARK: D SWAIN	(NAVD 1988)
ELEVATION: 11.51'	

NSRS BENCHMARK	
BENCHMARK: Y 351	(PID:KU1153)
ELEVATION: 98.75'	(NAVD 1988)

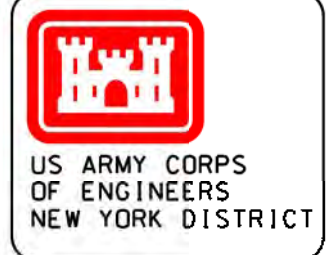


PROJECT SPECIFIC NOTES:

- THE INFORMATION DEPICTED ON THIS MAP REPRESENTS THE RESULTS OF SURVEYS MADE ON THE DATES INDICATED AND CAN ONLY BE CONSIDERED AS THE GENERAL CONDITIONS EXISTING AT THAT TIME.
- THE SOUNDINGS ON THIS MAP MEET EM 1110-2-1003 ACCURACY STANDARDS.
- THIS MAP IS CEPO COMPLIANT IN ACCORDANCE WITH ER 1110-2-8160 AND EM 1110-2-6056.
- COORDINATES REFER TO US STATE PLANE COORDINATE SYSTEM NAD 1983, LONG ISLAND LAMBERT - ZONE 3104, US SURVEY FEET.
- SOUNDINGS ON THIS MAP REFER TO THE PLANE OF MEAN LOWER LOW WATER (MLLW) [EPOCH 1983-2001].
- MEAN LOWER LOW WATER IS 4.2 FEET BELOW NAVD88 AS DETERMINED USING VDATUM (VER. 4.3).
- SOUNDINGS DEPICTED ON THIS MAP ARE BASED ON A 3' x 3' MEDIAN CELL, SORTED TO A 20' INTERVAL.
- CONTOURS ON THIS MAP WERE GENERATED USING THE 3 x 3 DATA SET.
- THE DATA DEPICTED ON THIS MAP SHOULD NOT BE USED FOR VOLUME CALCULATION PURPOSES.
- AERIAL IMAGERY PROVIDED BY NYGIN 2021 AND IS FOR ORIENTATION PURPOSES ONLY.
- THIS SURVEY WAS PERFORMED USING REAL TIME KINEMATIC GPS FROM STATION "NYDOT RTN AND RTK EVERS".

LOCAL CONTROL DATA
 BENCHMARK: O SWAIN
 ELEVATION: 11.51' (NAVD 1988)

NSRS BENCHMARK
 BENCHMARK: Y 351 (PID:KU1153)
 ELEVATION: 98.75' (NAVD 1988)



US ARMY CORPS OF ENGINEERS
 NEW YORK DISTRICT

PR	SC
MP	SC

DATES OF SURVEY:
 21-25-26-27-28 JULY 2022
 1 AUGUST 2022

REQ. NO./FILE NO.: 15200/NA/AL

SCALE:
 ONE INCH = 100 FEET

FIELD BOOKS:
 D1A10

APPROVED: M. APPEL FIELD CARTOGRAPHER
 APPROVED: M. FORTE CIVIL ENGINEERING TECHNICIAN
 APPROVED: P. BRADY SURVEYING TECHNICIAN
 APPROVED: J. MRAZ LEAD CARTOGRAPHER
 DATE: JULY 17, 2022

DEPARTMENT OF THE ARMY
 U.S. ARMY CORPS OF ENGINEERS
 NEW YORK DISTRICT
 NEW YORK, NEW YORK 10278

OPERATIONS DIVISION
 SURVEY SECTION
 CEMAN-OP-SS

EAST CHESTER CREEK
 NEW YORK
 CONDITION SURVEY