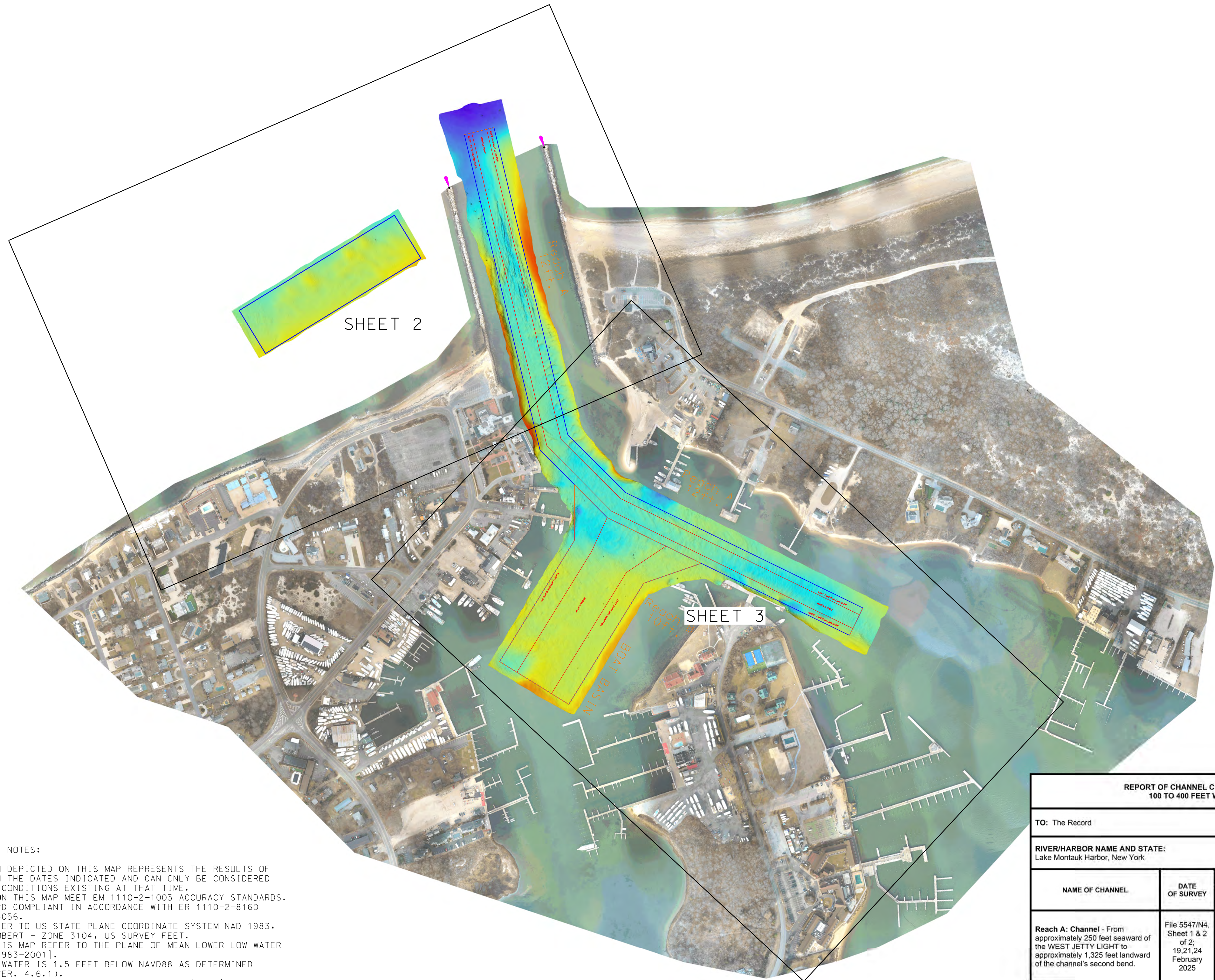
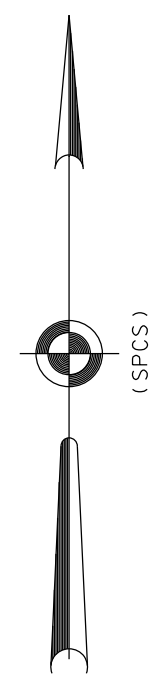


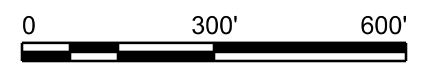
1 2 3 4 5 6 7 8 9 10 11 12 13 14 15 16 17 18 19 20

P  
N  
M  
L  
K  
J  
H  
G  
F  
E  
D  
C  
B  
A



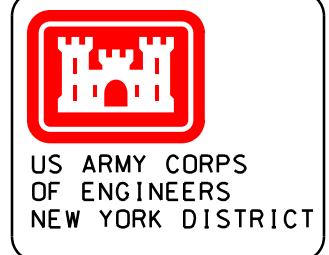
**PROJECT SPECIFIC NOTES:**

- THE INFORMATION DEPICTED ON THIS MAP REPRESENTS THE RESULTS OF SURVEYS MADE ON THE DATES INDICATED AND CAN ONLY BE CONSIDERED AS THE GENERAL CONDITIONS EXISTING AT THAT TIME.
- THE SOUNDINGS ON THIS MAP MEET EM 1110-2-1003 ACCURACY STANDARDS.
- THIS MAP IS CEPD COMPLIANT IN ACCORDANCE WITH ER 1110-2-8160 AND EM 1110-2-6056.
- COORDINATES REFER TO US STATE PLANE COORDINATE SYSTEM NAD 1983, LONG ISLAND LAMBERT - ZONE 3104, US SURVEY FEET.
- SOUNDINGS ON THIS MAP REFER TO THE PLANE OF MEAN LOWER LOW WATER (MLLW) [EPOCH 1983-2001].
- MEAN LOWER LOW WATER IS 1.5 FEET BELOW NAVD88 AS DETERMINED USING VDATUM (VER. 4.6.1).
- SOUNDINGS DEPICTED ON THIS MAP ARE BASED ON A 3' x 3' MEDIAN CELL, SORTED TO A 30' INTERVAL.
- CONTOURS ON THIS MAP WERE GENERATED USING THE 3' x 3' DATA SET.
- THE DATA DEPICTED ON THIS MAP SHOULD NOT BE USED FOR VOLUME CALCULATION PURPOSES.
- AERIAL IMAGERY PROVIDED BY USACE NEW YORK SURVEYS AND MAPPING BRANCH (2025) AND IS FOR ORIENTATION PURPOSES ONLY.
- THE PLANIMETRICS DEPICTED ON THIS MAP ARE FOR ORIENTATION PURPOSES ONLY.
- THIS SURVEY WAS PERFORMED USING REAL TIME KINEMATIC GPS FROM STATION "851 0448 A".



<p><b>NSRS BENCHMARK</b></p> <p>BENCHMARK: 851 0448 A (PID:BBDB80) ELEVATION: 6.94' (NAVD 1988)</p>	<p><b>LOCAL CONTROL</b></p> <p>BENCHMARK: COAST MONTAUK ELEVATION: 8.10' (NAVD 1988)</p>
---	--

<b>REPORT OF CHANNEL CONDITIONS 100 TO 400 FEET WIDE</b>					PAGE 1 OF 1		
					DATE: XX January 2025		
TO: The Record				FROM: U.S. Army Corps of Engineers 26 Federal Plaza, ATTN: CENAN-OP-ST New York, NY 10278-0090			
<b>RIVER/HARBOR NAME AND STATE:</b> Lake Montauk Harbor, New York				<b>MINIMUM DEPTHS IN CHANNEL ENTERING FROM SEAWARD</b>			
NAME OF CHANNEL	DATE OF SURVEY	AUTHORIZED PROJECT			LEFT OUTSIDE QUARTER (feet)	MIDDLE HALF (feet)	RIGHT OUTSIDE QUARTER (feet)
		WIDTH (feet)	LENGTH (miles)	DEPTH (feet)			
Reach A: Channel - From approximately 250 feet seaward of the WEST JETTY LIGHT to approximately 1,325 feet landward of the channel's second bend.	File 5547/N4, Sheet 1 & 2 of 2, 19,21,24 February 2025	150	0.55	12	8.1	13.2	7.6
<b>REPORT OF CHANNEL CONDITIONS 400 FEET WIDE</b>							
NAME OF CHANNEL	DATE OF SURVEY	AUTHORIZED PROJECT			LEFT OUTSIDE QUARTER (feet)	MIDDLE HALF (feet)	RIGHT OUTSIDE QUARTER (feet)
		WIDTH (feet)	LENGTH (miles)	DEPTH (feet)			
Reach B: Boat Basin - Located northwest of Star Island, approximately 915 feet in length landward from the main channel.	File 5547/N4, Sheet 1 of 2, 19,21,24 February 2025	Varies 400 To 740	0.15	10	9.5	7.8	9.9



US ARMY CORPS OF ENGINEERS  
NEW YORK DISTRICT

SCALE: ONE INCH = 300 FEET  
FIELD BOOKS: DNA 10

DATES OF SURVEY: 19,21,24 FEB 2025

SOLICITATION #: 5547/N4  
CONTRACT NO.:  
APPROVAL DATE: 24 FEB 2024

DESIGNED: CHAD BUZDOWSKI, PROJECT ENGINEER  
REVIEWED: RAPHAEL DORR, PROJECT ENGINEER  
APPROVED: RYAN M. FERGUSON, CHIEF, TECHNICAL SUPPORT SECTION  
APPROVED: MICHAEL J. JOSEBACK, CHIEF, OPERATIONS SUPPORT BRANCH  
DATE: 26 FEB 2025

DEPARTMENT OF THE ARMY  
U.S. ARMY CORPS OF ENGINEERS  
NEW YORK DISTRICT  
NEW YORK, NEW YORK 10278

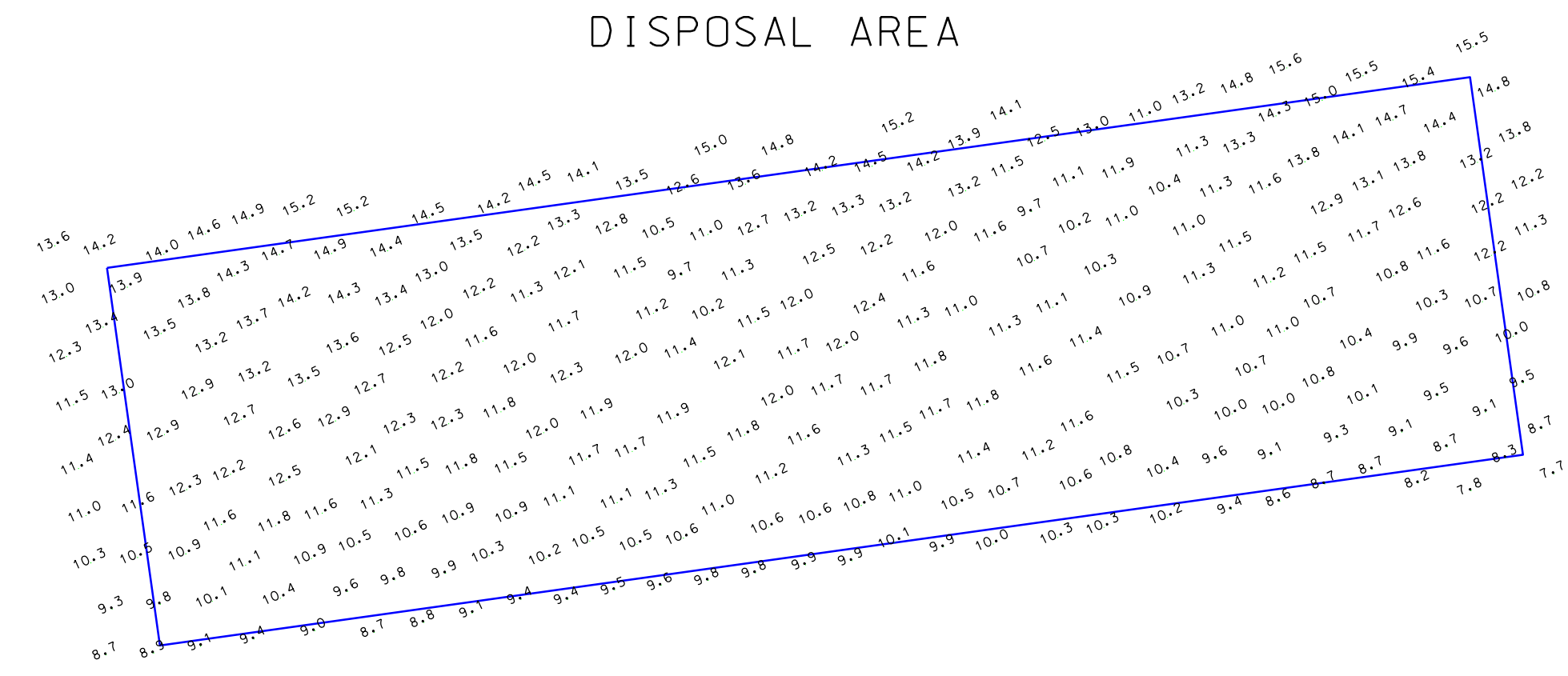
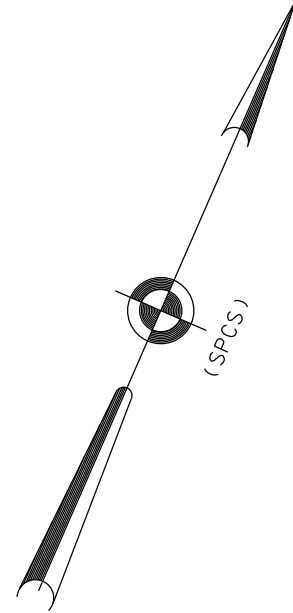
OPERATIONS DIVISION  
TECHNICAL SUPPORT SECTION  
CENAN-OP-ST

LAKE MONTAUK HARBOR  
NEW YORK

AFTER DREDGE SURVEY

SHEET ID  
VH-101  
1 OF 3

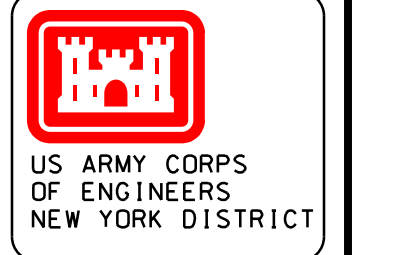




<b>REPORT OF CHANNEL CONDITIONS 100 TO 400 FEET WIDE</b>					<b>PAGE</b> 1 <b>OF</b> 1		
					<b>DATE:</b> XX January 2025		
<b>TO:</b> The Record			<b>FROM:</b> U.S. Army Corps of Engineers 26 Federal Plaza, ATTN: CENAN-OP-ST New York, NY 10278-0090				
<b>RIVER/HARBOR NAME AND STATE:</b> Lake Montauk Harbor, New York			<b>MINIMUM DEPTHS IN CHANNEL ENTERING FROM SEAWARD</b>				
NAME OF CHANNEL	DATE OF SURVEY	AUTHORIZED PROJECT			LEFT OUTSIDE QUARTER (feet)	MIDDLE HALF (feet)	RIGHT OUTSIDE QUARTER (feet)
		WIDTH (feet)	LENGTH (nmiles)	DEPTH (feet)			
<b>Reach A: Channel</b> - From approximately 250 feet seaward of the WEST JETTY LIGHT to approximately 1,325 feet landward of the channel's second bend.	File 5547/N4, Sheet 1 & 2 of 2; 19,21,24 February 2025	150	0.55	12	8.1	13.2	7.6
<b>REPORT OF CHANNEL CONDITIONS 400 FEET WIDE</b>							
NAME OF CHANNEL	DATE OF SURVEY	AUTHORIZED PROJECT			LEFT OUTSIDE QUARTER (feet)	MIDDLE HALF (feet)	RIGHT OUTSIDE QUARTER (feet)
		WIDTH (feet)	LENGTH (nmiles)	DEPTH (feet)			
<b>Reach B: Boat Basin</b> - Located northwest of Star Island, approximately 915 feet in length landward from the main channel.	File 5547/N4, Sheet 1 of 2; 19,21,24 February 2025	Varies 400 To 740	0.15	10	9.5	7.8	9.9



\* FOR PROJECT SPECIFIC NOTES AND CONTROL, REFER TO VH-101.



US ARMY CORPS OF ENGINEERS  
NEW YORK DISTRICT

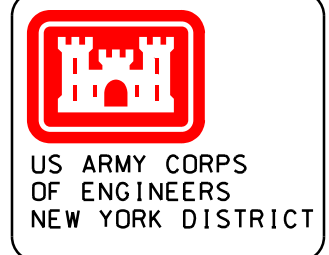
<b>DATES OF SURVEY:</b> 19,21,24 FEB 2025	<b>SCALE:</b> ONE INCH = 100 FEET
<b>SOLICITATION #:</b> 5547/N4	<b>FIELD BOOKS:</b> DNA 10
<b>CONTRACT NO.:</b> 24 FEB 2024	<b>APPROVAL DATE:</b> 24 FEB 2024

<b>DESIGNED:</b> CHAD BUZKOWSKI PROJECT ENGINEER	<b>DEPARTMENT OF THE ARMY U.S. ARMY CORPS OF ENGINEERS NEW YORK DISTRICT NEW YORK, NEW YORK 10278</b>
<b>REVIEWED:</b> RAPHAEL DORR PROJECT ENGINEER	
<b>APPROVED:</b> BYAN M. FERUGLSON CHIEF, TECHNICAL SUPPORT SECTION	
<b>APPROVED:</b> MICHAEL J. JOSEBACK CHIEF, OPERATIONS SUPPORT BRANCH	
<b>DATE:</b> 26 FEB 2025	<b>OPERATIONS DIVISION TECHNICAL SUPPORT SECTION CENAN-OP-ST</b>

LAKE MONTAUK HARBOR  
NEW YORK  
AFTER DREDGE SURVEY

SHEET ID  
VH-102  
2 OF 3





US ARMY CORPS OF ENGINEERS  
NEW YORK DISTRICT

DATE OF SURVEY:  
19,21,24 FEB 2025

SCALE:  
ONE INCH = 100 FEET

FIELD BOOKS:  
DNA 10

SOLICITATION #:  
5547/N4

CONTRACT NO. #:  
24 FEB 2024

APPROVAL DATE:

DESIGNED BY: CHAD BUZKOWSKI  
PROJECT ENGINEER

REVIEWED BY: RAPHAEL DORR  
PROJECT ENGINEER

APPROVED BY: BYAN M. FERUGLSON  
CHIEF, TECHNICAL SUPPORT SECTION

APPROVED BY: MICHAEL J. JOSEBACK  
CHIEF, OPERATIONS SUPPORT BRANCH

DATE: 26 FEB 2025

DEPARTMENT OF THE ARMY  
U.S. ARMY CORPS OF ENGINEERS  
NEW YORK DISTRICT  
NEW YORK, NEW YORK 10278

OPERATIONS DIVISION  
TECHNICAL SUPPORT SECTION  
CENAN-OP-ST

**REPORT OF CHANNEL CONDITIONS  
100 TO 400 FEET WIDE**

TO: The Record

FROM: U.S. Army Corps of Engineers  
26 Federal Plaza, ATTN: CENAN-OP-ST  
New York, NY 10278-0090

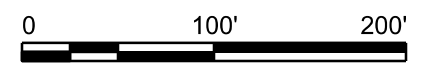
RIVER/HARBOR NAME AND STATE:  
Lake Montauk Harbor, New York

MINIMUM DEPTHS IN CHANNEL ENTERING FROM SEAWARD

NAME OF CHANNEL	DATE OF SURVEY	AUTHORIZED PROJECT			LEFT OUTSIDE QUARTER (feet)	MIDDLE HALF (feet)	RIGHT OUTSIDE QUARTER (feet)
		WIDTH (feet)	LENGTH (nmiles)	DEPTH (feet)			
Reach A: Channel - From approximately 250 feet seaward of the WEST JETTY LIGHT to approximately 1,325 feet landward of the channel's second bend.	File 5547/N4, Sheet 1 & 2 of 2; 19,21,24 February 2025	150	0.55	12	8.1	13.2	7.6

**REPORT OF CHANNEL CONDITIONS  
400 FEET WIDE**

NAME OF CHANNEL	DATE OF SURVEY	AUTHORIZED PROJECT			LEFT OUTSIDE QUARTER (feet)	MIDDLE HALF (feet)	RIGHT OUTSIDE QUARTER (feet)
		WIDTH (feet)	LENGTH (nmiles)	DEPTH (feet)			
Reach B: Boat Basin - Located northwest of Star Island, approximately 915 feet in length landward from the main channel.	File 5547/N4, Sheet 1 of 2; 19,21,24 February 2025	Varies 400 To 740	0.15	10	9.5	7.8	9.9



\* FOR PROJECT SPECIFIC NOTES AND CONTROL, REFER TO VH-101.

SHEET ID  
VH-103  
3 OF 3