



**US Army Corps
of Engineers®**
New York District

LAKE MONTAUK HARBOR, EAST HAMPTON, NEW YORK NAVIGATION IMPROVEMENTS

FINAL ENVIRONMENTAL ASSESSMENT JULY 2020

APPENDIX E: Cultural Resources

From: [Bonney Hartley](#)
To: [Jansson, Anna CIV USARMY CENAN \(USA\)](#)
Subject: [Non-DoD Source] RE: Lake Montauk Harbor Navigation Improvements Draft Feasibility Report and Environmental Assessment Ready for Section 106 Review
Date: Thursday, August 1, 2019 1:03:02 PM

Hello Anna,

My preference is to receive project information by email. For this project, Stockbridge Munsee would like to defer to the Shinnecock Indian Nation.

Thanks!

Bonney Hartley

Bonney Hartley
Tribal Historic Preservation Officer
Stockbridge-Munsee Mohican Tribal Historic Preservation
Extension office
65 1st Street
Troy, NY 12180
(518) 244-3164
Bonney.Hartley@mohican-nsn.gov
Blocked www.mohican-nsn.gov

-----Original Message-----

From: Jansson, Anna CIV USARMY CENAN (USA) <Anna.M.Jansson@usace.army.mil>
Sent: Friday, July 26, 2019 5:30 PM
To: Bonney Hartley <Bonney.Hartley@mohican-nsn.gov>
Subject: Lake Montauk Harbor Navigation Improvements Draft Feasibility Report and Environmental Assessment Ready for Section 106 Review

Hello Ms. Hartley,

I am a new archaeologist at the U.S. Army Corps of Engineers, New York District. I am reaching out to you because the Draft Feasibility Report and Environmental Assessment for the Lake Montauk Harbor Navigation Improvements study is ready for Section 106 review. Attached is my letter giving an overview of the project.

The link where you can download the report is:

https://secure-web.cisco.com/13HN-VE2oqukHles3rQ4XXkADIFowiNaA4I91vg9OvwSESPB4OouzXWa3fu5oLLMirAzhrPcnma7STKMwkEY1PhOeQNW3_bYy0d-u1CnnibE8307l2z-yEVtH0McLThla5Yy_6DPemwW4N9w9BjuYT2tp0MTmYdhD0sDnQxEawkqwi4HX0fHhnU2mi4AvJ7L7bDMTY2MavqMnv_NyD40FJoJcIF_rs7RT3E7kt-q4nDosy4bfYZYo2u1gnGkLwvQFx4Dx8cv47r0hk2yOOkuYw/https%3A%2F%2Fwww.nan.usace.army.mil%2FMissions%2FCivil-Works%2FProjects-in-New-York%2FLake-Montauk-Harbor-Feasibility-Study%2F

I am also mailing you a hard copy of the letter. What is your preferred method to receive correspondence from me in the future, email or hard copy?

Thanks so much,
Anna

Anna M. Jansson M.A. RPA
Archaeologist
U.S. Army Corps of Engineers
26 Federal Plaza
New York, NY 10278
Office: 917-790-8623



'Ifie Vefaware :Nation

Historic Preservation Department

31064 State Highway 281

Anadarko, OK 73005

Phone (405)247-2448

November 6, 2019

To Whom It May Concern:

The Delaware Nation Historic Preservation Department received correspondence regarding the following referenced project(s).

Project: Lake Montauk Harbor Navigation Improvements Study

Our office is committed to protecting tribal heritage, culture and religion with particular concern for archaeological sites potentially containing burials and associated funerary objects.

The Lenape people occupied the area indicated in your letter during prior to European contact until their eventual removal to our present locations. According to our files, the location of the proposed project does not endanger cultural, or religious sites of interest to the Delaware Nation. Please continue with the project as planned keeping in mind during construction should an archaeological site or artifacts inadvertently be uncovered, all construction and ground disturbing activities should immediately be halted until the appropriate state agencies, as well as this office, are notified (within 24 hours), and a proper archaeological assessment can be made.

Please note the Delaware Nation, the Delaware Tribe of Indians, and the Stockbridge Munsee Band of Mohican Indians are the only Federally Recognized Delaware/Lenape entities in the United States and consultation must be made only with designated staff of these three tribes. We appreciate your cooperation in contacting the Delaware Nation Cultural Preservation Office to conduct proper Section 106 consultation. Should you have any questions, feel free to contact our offices at 405-247-2448 ext. 1403.



Erin Thompson

Director of Historic Preservation

Delaware Nation

31064 State Highway 281

Anadarko, OK 73005

Ph. 405-247-2448 ext. 1403

ethompson@delawarenation-nsn.gov



**Parks, Recreation,
and Historic Preservation**

ANDREW M. CUOMO
Governor

ERIK KULLESEID
Commissioner

August 06, 2019

Ms. Anna Jansson
USACE, NY District
26 Federal Plaza
New York, NY 10278

Re: USACE
Lake Montauk Harbor Navigation Improvements Feasibility Study and Environmental
Assessment
19PR05078

Dear Ms. Jansson:

Thank you for requesting the comments of the New York State Historic Preservation Office (SHPO). We have reviewed the submitted materials in accordance with Section 106 of the National Historic Preservation Act of 1966. These comments are those of the SHPO and relate only to Historic/Cultural resources. They do not include other environmental impacts to New York State Parkland that may be involved in or near your project. Such impacts must be considered as part of the environmental review of the project pursuant to the National Environmental Policy Act and/or the State Environmental Quality Review Act (New York State Environmental Conservation Law Article 8).

Based on this review, SHPO concurs with your agency's determination that the undertaking will have No Adverse Effect on historic properties.

If further correspondence is required regarding this project, please refer to the SHPO Project Review (PR) number noted above. If you have any questions, I can be reached at 518-268-2186.

Sincerely,

A handwritten signature in black ink, appearing to read "Tim Lloyd".

Tim Lloyd, Ph.D., RPA
Scientist - Archaeology
timothy.lloyd@parks.ny.gov

via e-mail only

Division for Historic Preservation

P.O. Box 189, Waterford, New York 12188-0189 • (518) 237-8643 • parks.ny.gov



REPLY TO
ATTENTION OF

DEPARTMENT OF THE ARMY
U.S. ARMY CORPS OF ENGINEERS, NEW YORK DISTRICT
JACOB K. JAVITS FEDERAL BUILDING
26 FEDERAL PLAZA
NEW YORK NEW YORK 10278-0090

26 July 2019

Environmental Assessment Section
Environmental Analysis Branch

Bonney Hartley, THPO
Stockbridge Munsee Community
65 1st Street
Troy, NY 12180

Dear Ms. Hartley,

The U.S. Army Corps of Engineers, New York District (Corps) has prepared a Draft Feasibility Report and Environmental Assessment for the Lake Montauk Harbor Navigation Improvements study. The proposed project's purpose is to improve navigation in Lake Montauk Harbor, Suffolk County, New York and the inlet connecting it to Block Island Sound. The Tentatively Selected Plan (TSP) includes deepening the federal channel to -17 ft. MLLW (mean lower low water), creating a deposition basin on the eastern side of the channel to the same depth, and placing the dredged materials on the downdrift beach from the inlet (Enclosure 1).

The cultural resources investigation for Lake Montauk Harbor has included documentary research, which consisted of gathering existing data from previous cultural resource studies and an examination of existing digital databases held by the New York State Historic Preservation Office (NYSHPO) on the Cultural Resources Information System (CRIS).

Undertaking

The TSP consists of three elements, deepening the federal navigation channel, adding the deposition basin, and placing the dredged materials on the downdrift beach. The federal channel is presently 150 wide and authorized to -12 ft. MLLW. The TSP would keep the same channel footprint, but deepen it by five feet to -17 ft. MLLW. The deposition basin would be excavated adjacent to the channel to protect it by providing a space where sediment can be deposited before entering the channel. This is an advanced maintenance technique that allows the channel to be dredged less frequently, since the channel infills slower. The proposed deposition basin is on the eastern side of the channel and is 100 ft. wide and runs for 1,800 ft. from the mouth of the channel into the inner channel (see Enclosure 1). It will be dredged to the same depth of the federal channel, -17 ft. MLLW. Currently, the Corps' Operations Division has been dredging a 50 ft. wide deposition basin along the federal channel for the length that is adjacent to the east jetty of the inlet. The current deposition basin is shorter and narrower than the proposed deposition basin. The last element of the TSP is the placement of the dredged sand on the downdrift beach from the inlet. The dredged material will be placed in an area extending 3,000 feet from the western inlet jetty and measure 46 feet wide through its length. Presently, the dredged materials are placed within a few hundred feet of the west jetty on the downdrift beach. The TSP proposes to extend the length of beach where the sand is placed in order to provide more storm risk management to the houses uphill from the beach.

Area of Potential Effect (APE)

The APE includes the federal channel, deposition basin, and downdrift beach for a length of 3,000 ft. The APE for archaeology, historic structures and historic landscapes has been defined as the footprint of these elements. There are no staging areas or access roads, since the dredging will be done from a barge in the water, and then the dredged sediment will be pumped onto the beach.

Identification and Evaluation

Inside APE: There are no sites located within the APE.

Within ½ Mile of the APE: There are nine sites within a half a mile of the APE (Enclosure 2). Four are above-ground, four are under-ground, and one is under-water.

Above-Ground: The four above ground sites include the Caleb Bragg Estate and three U.S. Coast Guard buildings. The Caleb Bragg Estate is listed on the National Register of Historic Places (NRHP) and is about 150 feet from the federal channel. The US Coast Guard buildings are about 350 feet from the federal channel. Two of these Coast Guard buildings are eligible for the NRHP while the third is ineligible.

Under-Ground: The four under-ground sites include the Star Island Prehistoric Site, the Culloden Point Prehistoric Sites, Culloden Point IV Prehistoric Site, and Culloden Point Area F Extension. The Star Island Prehistoric Site and Culloden Point Prehistoric Sites are eligible for the NRHP, while the other two sites have undetermined eligibility.

Under-Water: The submerged site is the NRHP listed wreck of the *H.M.S. Culloden*, a British Man-of War that ran aground in 1781.

Assessment of Effects

Above-Ground: The Caleb Bragg Estate and Coast Guard Buildings are located on Star Island to the south of the federal channel (see Enclosure 1). The federal channel comes near to Star Island, but since all activity will be taking place in the water to dredge the federal channel, and no activity on land, the resources on Star Island will not be affected. It is the Corps opinion that the Undertaking will have no adverse effect on any of the above-ground resources.

Under-Ground: The Star Island Prehistoric site is located on Star Island, which will not be affected by dredging the channel. The other three sites: Culloden Point Prehistoric Sites, Culloden Point IV Prehistoric Site, and Culloden Point Area F Extension are all located on Culloden Point. These sites are to the west and upland of the sand placement area and will not be affected. It is the Corps opinion that the Undertaking will have no adverse effect on any of the under-ground resources.

Under-Water: The *H.M.S. Culloden* shipwreck site is located offshore about ½ mile west of the sand placement area. The dredged sand will be placed in a specific location on the beach, and will not affect this shipwreck. It is the Corps opinion that the Undertaking will have no adverse effect on the *H.M.S. Culloden* Shipwreck Site.

The Corps has prepared a Draft Feasibility Report and Environmental Assessment (DFR/EA) for this project and can be found at: <https://www.nan.usace.army.mil/Missions/Civil-Works/Projects-in-New-York/Lake-Montauk-Harbor-Feasibility-Study/>. Public review of the report will be available for 30 days until August 25, 2019. Please review this documentation and provide

Section 106 comments, pursuant to 36 CFR 800.4(d)(1). If you or your staff require additional information or have any questions, please contact Anna Jansson, Project Archaeologist, at 917-790-8623. Thank you for your assistance and consideration.

Sincerely,

Peter M. Wepler
Chief, Environmental Analysis Branch

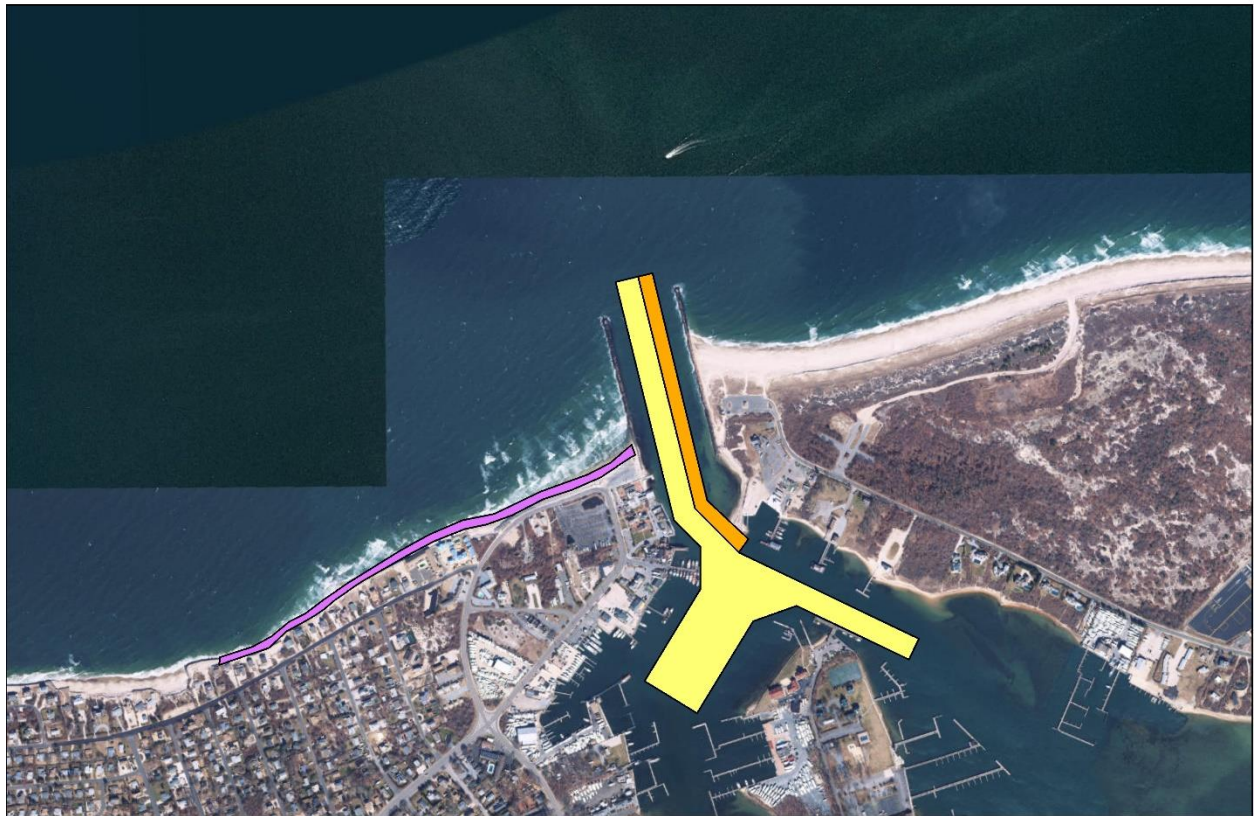
Enclosures

Legend

- Beach_Fill
- Deposition_Basin
- Federal_Channel

Lake Montauk Harbor Area of Potential Affect

970 485 0 970 Feet



Enclosure 1. Area of Potential Effect of the Lake Montauk Harbor TSP.

Enclosure 2. Historic Resources with ½ Mile of the APE.

USN Number	Site Name	Description	NRHP Eligibility
10303.000077	H.M.S. Culloden Shipwreck Site	A British Man-of-War that ran aground on January 24, 1781	Listed
10303.000140	Culloden Point Prehistoric Sites	4 Woodland Period Prehistoric sites. All lithic scatters with buried components.	Eligible
10303.000192	Culloden Point IV Prehistoric Site	4 Woodland Period Prehistoric sites. All lithic scatters with buried components.	Undetermined
10303.000819	Culloden Point Area F extension (Pedersen/Dixson)	Prehistoric with human remains. Features, lithic scatter with fires cracked rock, ceramics, and animal bones.	Undetermined
10303.000816	Star Island Prehistoric Site	Lithic scatter with projectile points.	Eligible
10303.000724	Montauk USCG Station Bldg., Multi-Mission Bldg.	Combined administration/barracks US Coast Guard building constructed in 1939 in Napeague, NY, and relocated to current location in 1954	Eligible
10303.000837	Engineering/Boat Maintenance Building	Axillary building to the Multi-Mission Building. Has more alterations than the Multi-Mission Building.	Eligible, USCG recommends as ineligible
10303.000838	Unaccompanied Personnel Housing (UPH)	Building constructed on USCG complex in 1989.	Not Eligible
10303.000185	Caleb Bragg Estate	Historic residential property built in 1929 containing 7 buildings, circular driveway, tennis courts, docks, parking lot and landscaping.	Listed



REPLY TO
ATTENTION OF

DEPARTMENT OF THE ARMY
U.S. ARMY CORPS OF ENGINEERS, NEW YORK DISTRICT
JACOB K. JAVITS FEDERAL BUILDING
26 FEDERAL PLAZA
NEW YORK NEW YORK 10278-0090

26 July 2019

Environmental Assessment Section
Environmental Analysis Branch

Dr. Brice Obermeyer, Director
Historic Preservation Representative
Delaware Tribe of Indians
1 Kellogg Circle
Roosevelt Hall, Room 212
Emporia, KS 66801

Dear Dr. Obermeyer,

The U.S. Army Corps of Engineers, New York District (Corps) has prepared a Draft Feasibility Report and Environmental Assessment for the Lake Montauk Harbor Navigation Improvements study. The proposed project's purpose is to improve navigation in Lake Montauk Harbor, Suffolk County, New York and the inlet connecting it to Block Island Sound. The Tentatively Selected Plan (TSP) includes deepening the federal channel to -17 ft. MLLW (mean lower low water), creating a deposition basin on the eastern side of the channel to the same depth, and placing the dredged materials on the downdrift beach from the inlet (Enclosure 1).

The cultural resources investigation for Lake Montauk Harbor has included documentary research, which consisted of gathering existing data from previous cultural resource studies and an examination of existing digital databases held by the New York State Historic Preservation Office (NYSHPO) on the Cultural Resources Information System (CRIS).

Undertaking

The TSP consists of three elements, deepening the federal navigation channel, adding the deposition basin, and placing the dredged materials on the downdrift beach. The federal channel is presently 150 wide and authorized to -12 ft. MLLW. The TSP would keep the same channel footprint, but deepen it by five feet to -17 ft. MLLW. The deposition basin would be excavated adjacent to the channel to protect it by providing a space where sediment can be deposited before entering the channel. This is an advanced maintenance technique that allows the channel to be dredged less frequently, since the channel infills slower. The proposed deposition basin is on the eastern side of the channel and is 100 ft. wide and runs for 1,800 ft. from the mouth of the channel into the inner channel (see Enclosure 1). It will be dredged to the same depth of the federal channel, -17 ft. MLLW. Currently, the Corps' Operations Division has been dredging a 50 ft. wide deposition basin along the federal channel for the length that is adjacent to the east jetty of the inlet. The current deposition basin is shorter and narrower than the proposed deposition basin. The last element of the TSP is the placement of the dredged sand on the downdrift beach from the inlet. The dredged material will be placed in an area extending 3,000 feet from the western inlet jetty and measure 46 feet wide through its length. Presently, the dredged materials are placed within a few hundred feet of the west jetty on the downdrift beach. The TSP proposes to extend the length of beach where the sand is placed in order to provide more storm risk management to the houses uphill from the beach.

Area of Potential Effect (APE)

The APE includes the federal channel, deposition basin, and downdrift beach for a length of 3,000 ft. The APE for archaeology, historic structures and historic landscapes has been defined as the footprint of these elements. There are no staging areas or access roads, since the dredging will be done from a barge in the water, and then the dredged sediment will be pumped onto the beach.

Identification and Evaluation

Inside APE: There are no sites located within the APE.

Within ½ Mile of the APE: There are nine sites within a half a mile of the APE (Enclosure 2). Four are above-ground, four are under-ground, and one is under-water.

Above-Ground: The four above ground sites include the Caleb Bragg Estate and three U.S. Coast Guard buildings. The Caleb Bragg Estate is listed on the National Register of Historic Places (NRHP) and is about 150 feet from the federal channel. The US Coast Guard buildings are about 350 feet from the federal channel. Two of these Coast Guard buildings are eligible for the NRHP while the third is ineligible.

Under-Ground: The four under-ground sites include the Star Island Prehistoric Site, the Culloden Point Prehistoric Sites, Culloden Point IV Prehistoric Site, and Culloden Point Area F Extension. The Star Island Prehistoric Site and Culloden Point Prehistoric Sites are eligible for the NRHP, while the other two sites have undetermined eligibility.

Under-Water: The submerged site is the NRHP listed wreck of the *H.M.S. Culloden*, a British Man-of War that ran aground in 1781.

Assessment of Effects

Above-Ground: The Caleb Bragg Estate and Coast Guard Buildings are located on Star Island to the south of the federal channel (see Enclosure 1). The federal channel comes near to Star Island, but since all activity will be taking place in the water to dredge the federal channel, and no activity on land, the resources on Star Island will not be affected. It is the Corps opinion that the Undertaking will have no adverse effect on any of the above-ground resources.

Under-Ground: The Star Island Prehistoric site is located on Star Island, which will not be affected by dredging the channel. The other three sites: Culloden Point Prehistoric Sites, Culloden Point IV Prehistoric Site, and Culloden Point Area F Extension are all located on Culloden Point. These sites are to the west and upland of the sand placement area and will not be affected. It is the Corps opinion that the Undertaking will have no adverse effect on any of the under-ground resources.

Under-Water: The *H.M.S. Culloden* shipwreck site is located offshore about ½ mile west of the sand placement area. The dredged sand will be placed in a specific location on the beach, and will not affect this shipwreck. It is the Corps opinion that the Undertaking will have no adverse effect on the *H.M.S. Culloden* Shipwreck Site.

The Corps has prepared a Draft Feasibility Report and Environmental Assessment (DFR/EA) for this project and can be found at: <https://www.nan.usace.army.mil/Missions/Civil-Works/Projects-in-New-York/Lake-Montauk-Harbor-Feasibility-Study/>. Public review of the report will be available for 30 days until August 25, 2019. Please review this documentation and provide Section 106 comments, pursuant to 36 CFR 800.4(d)(1). If you or your staff require additional information or have any questions, please contact Anna Jansson, Project Archaeologist, at 917-790-8623. Thank you for your assistance and consideration.

Sincerely,

Peter M. Weppler
Chief, Environmental Analysis Branch

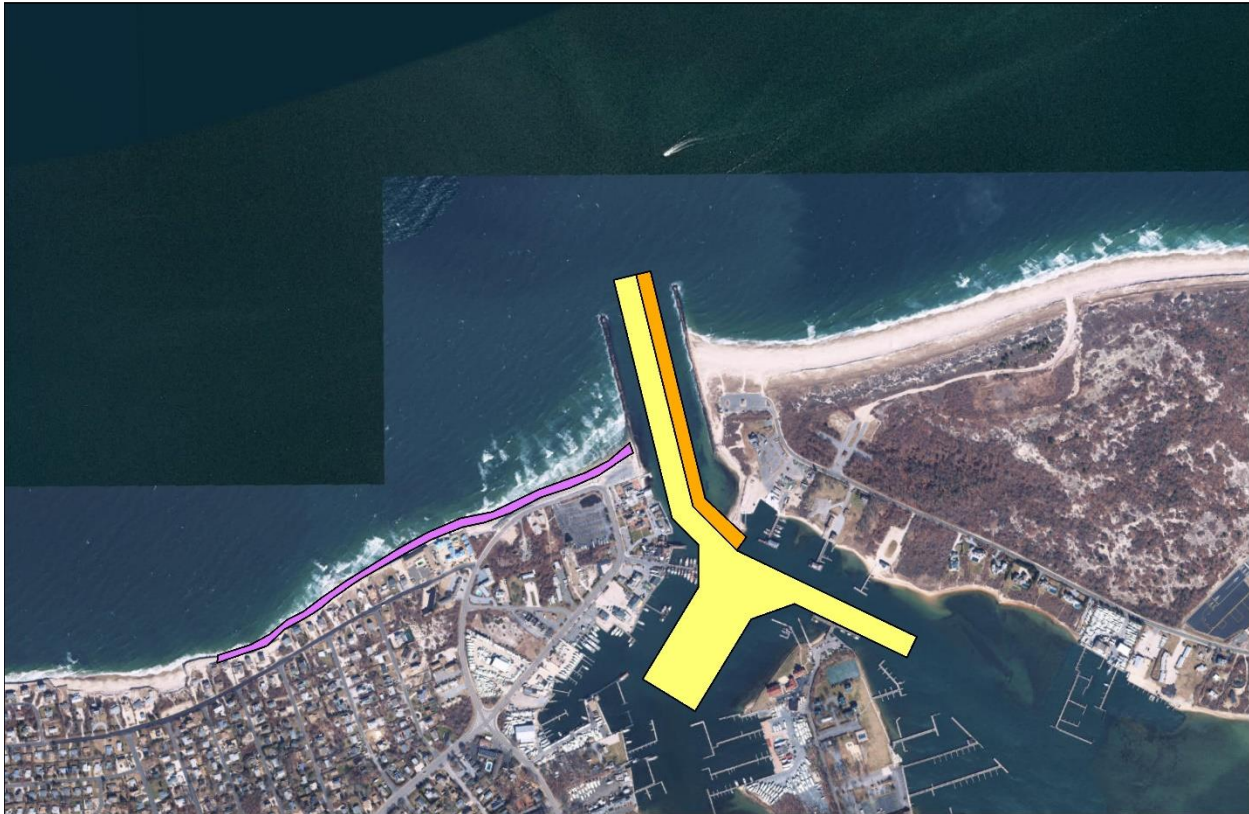
Enclosures

Legend

- Beach_Fill
- Deposition_Basin
- Federal_Channel

Lake Montauk Harbor Area of Potential Affect

970 485 0 970 Feet



Enclosure 1. Area of Potential Effect of the Lake Montauk Harbor TSP.

Enclosure 2. Historic Resources with ½ Mile of the APE.

USN Number	Site Name	Description	NRHP Eligibility
10303.000077	H.M.S. Culloden Shipwreck Site	A British Man-of-War that ran aground on January 24, 1781	Listed
10303.000140	Culloden Point Prehistoric Sites	4 Woodland Period Prehistoric sites. All lithic scatters with buried components.	Eligible
10303.000192	Culloden Point IV Prehistoric Site	4 Woodland Period Prehistoric sites. All lithic scatters with buried components.	Undetermined
10303.000819	Culloden Point Area F extension (Pedersen/Dixson)	Prehistoric with human remains. Features, lithic scatter with fires cracked rock, ceramics, and animal bones.	Undetermined
10303.000816	Star Island Prehistoric Site	Lithic scatter with projectile points.	Eligible
10303.000724	Montauk USCG Station Bldg., Multi-Mission Bldg.	Combined administration/barracks US Coast Guard building constructed in 1939 in Napeague, NY, and relocated to current location in 1954	Eligible
10303.000837	Engineering/Boat Maintenance Building	Axillary building to the Multi-Mission Building. Has more alterations than the Multi-Mission Building.	Eligible, USCG recommends as ineligible
10303.000838	Unaccompanied Personnel Housing (UPH)	Building constructed on USCG complex in 1989.	Not Eligible
10303.000185	Caleb Bragg Estate	Historic residential property built in 1929 containing 7 buildings, circular driveway, tennis courts, docks, parking lot and landscaping.	Listed



REPLY TO
ATTENTION OF

DEPARTMENT OF THE ARMY
U.S. ARMY CORPS OF ENGINEERS, NEW YORK DISTRICT
JACOB K. JAVITS FEDERAL BUILDING
26 FEDERAL PLAZA
NEW YORK NEW YORK 10278-0090

26 July 2019

Environmental Assessment Section
Environmental Analysis Branch

David Bunn Martine
Cultural Resource Department
Shinnecock Nation
PO Box 5006
Southampton, NY 11969

Dear Mr. Martine,

The U.S. Army Corps of Engineers, New York District (Corps) has prepared a Draft Feasibility Report and Environmental Assessment for the Lake Montauk Harbor Navigation Improvements study. The proposed project's purpose is to improve navigation in Lake Montauk Harbor, Suffolk County, New York and the inlet connecting it to Block Island Sound. The Tentatively Selected Plan (TSP) includes deepening the federal channel to -17 ft. MLLW (mean lower low water), creating a deposition basin on the eastern side of the channel to the same depth, and placing the dredged materials on the downdrift beach from the inlet (Enclosure 1).

The cultural resources investigation for Lake Montauk Harbor has included documentary research, which consisted of gathering existing data from previous cultural resource studies and an examination of existing digital databases held by the New York State Historic Preservation Office (NYSHPO) on the Cultural Resources Information System (CRIS).

Undertaking

The TSP consists of three elements, deepening the federal navigation channel, adding the deposition basin, and placing the dredged materials on the downdrift beach. The federal channel is presently 150 wide and authorized to -12 ft. MLLW. The TSP would keep the same channel footprint, but deepen it by five feet to -17 ft. MLLW. The deposition basin would be excavated adjacent to the channel to protect it by providing a space where sediment can be deposited before entering the channel. This is an advanced maintenance technique that allows the channel to be dredged less frequently, since the channel infills slower. The proposed deposition basin is on the eastern side of the channel and is 100 ft. wide and runs for 1,800 ft. from the mouth of the channel into the inner channel (see Enclosure 1). It will be dredged to the same depth of the federal channel, -17 ft. MLLW. Currently, the Corps' Operations Division has been dredging a 50 ft. wide deposition basin along the federal channel for the length that is adjacent to the east jetty of the inlet. The current deposition basin is shorter and narrower than the proposed deposition basin. The last element of the TSP is the placement of the dredged sand on the downdrift beach from the inlet. The dredged material will be placed in an area extending 3,000 feet from the western inlet jetty and measure 46 feet wide through its length. Presently, the dredged materials are placed within a few hundred feet of the west jetty on the downdrift beach. The TSP proposes to extend the length of beach where the sand is placed in order to provide more storm risk management to the houses uphill from the beach.

Area of Potential Effect (APE)

The APE includes the federal channel, deposition basin, and downdrift beach for a length of 3,000 ft. The APE for archaeology, historic structures and historic landscapes has been defined as the footprint of these elements. There are no staging areas or access roads, since the dredging will be done from a barge in the water, and then the dredged sediment will be pumped onto the beach.

Identification and Evaluation

Inside APE: There are no sites located within the APE.

Within ½ Mile of the APE: There are nine sites within a half a mile of the APE (Enclosure 2). Four are above-ground, four are under-ground, and one is under-water.

Above-Ground: The four above ground sites include the Caleb Bragg Estate and three U.S. Coast Guard buildings. The Caleb Bragg Estate is listed on the National Register of Historic Places (NRHP) and is about 150 feet from the federal channel. The US Coast Guard buildings are about 350 feet from the federal channel. Two of these Coast Guard buildings are eligible for the NRHP while the third is ineligible.

Under-Ground: The four under-ground sites include the Star Island Prehistoric Site, the Culloden Point Prehistoric Sites, Culloden Point IV Prehistoric Site, and Culloden Point Area F Extension. The Star Island Prehistoric Site and Culloden Point Prehistoric Sites are eligible for the NRHP, while the other two sites have undetermined eligibility.

Under-Water: The submerged site is the NRHP listed wreck of the *H.M.S. Culloden*, a British Man-of War that ran aground in 1781.

Assessment of Effects

Above-Ground: The Caleb Bragg Estate and Coast Guard Buildings are located on Star Island to the south of the federal channel (see Enclosure 1). The federal channel comes near to Star Island, but since all activity will be taking place in the water to dredge the federal channel, and no activity on land, the resources on Star Island will not be affected. It is the Corps opinion that the Undertaking will have no adverse effect on any of the above-ground resources.

Under-Ground: The Star Island Prehistoric site is located on Star Island, which will not be affected by dredging the channel. The other three sites: Culloden Point Prehistoric Sites, Culloden Point IV Prehistoric Site, and Culloden Point Area F Extension are all located on Culloden Point. These sites are to the west and upland of the sand placement area and will not be affected. It is the Corps opinion that the Undertaking will have no adverse effect on any of the under-ground resources.

Under-Water: The *H.M.S. Culloden* shipwreck site is located offshore about ½ mile west of the sand placement area. The dredged sand will be placed in a specific location on the beach, and will not affect this shipwreck. It is the Corps opinion that the Undertaking will have no adverse effect on the *H.M.S. Culloden* Shipwreck Site.

The Corps has prepared a Draft Feasibility Report and Environmental Assessment (DFR/EA) for this project and can be found at: <https://www.nan.usace.army.mil/Missions/Civil-Works/Projects->

[in-New-York/Lake-Montauk-Harbor-Feasibility-Study/](#). Public review of the report will be available for 30 days until August 25, 2019. Please review this documentation and provide Section 106 comments, pursuant to 36 CFR 800.4(d)(1). If you or your staff require additional information or have any questions, please contact Anna Jansson, Project Archaeologist, at 917-790-8623. Thank you for your assistance and consideration.

Sincerely,

Peter M. Weppler
Chief, Environmental Analysis Branch

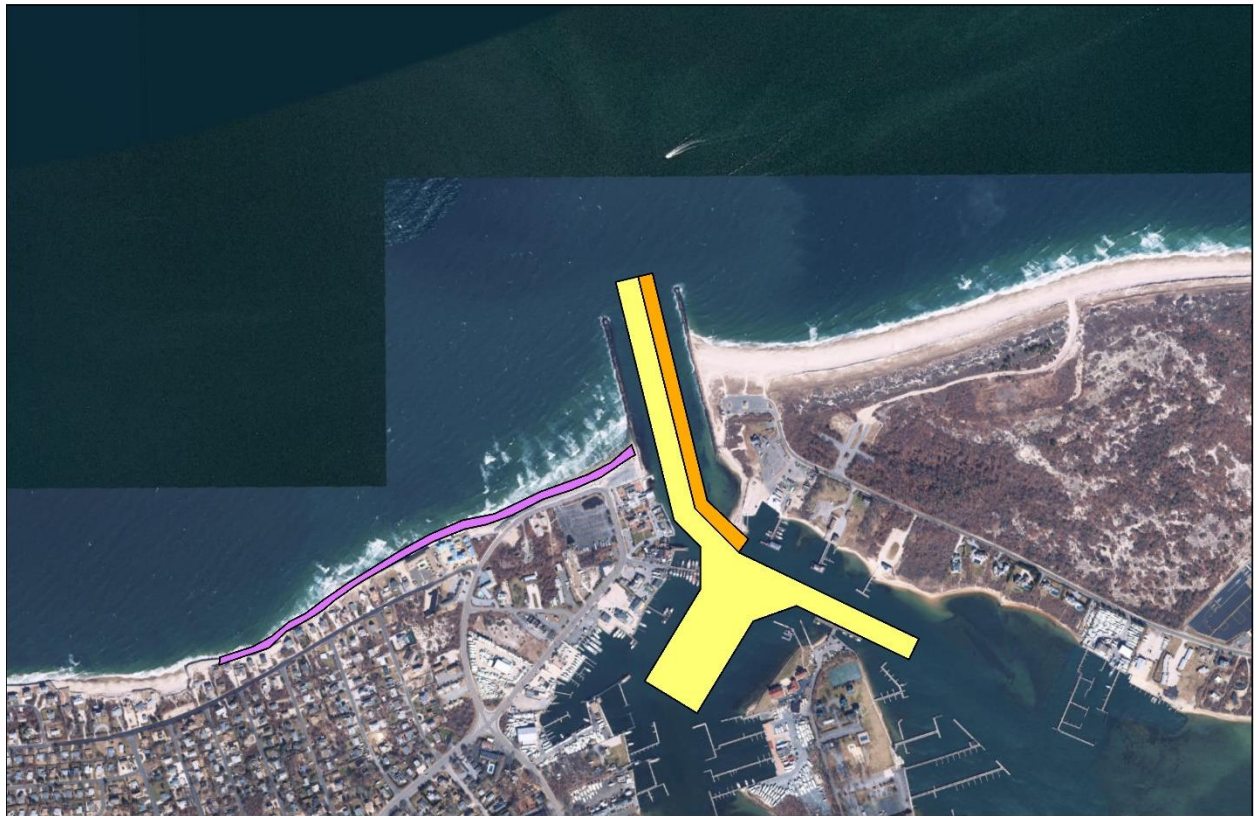
Enclosures

Legend

- Beach_Fill
- Deposition_Basin
- Federal_Channel

Lake Montauk Harbor Area of Potential Affect

970 485 0 970 Feet



Enclosure 1. Area of Potential Effect of the Lake Montauk Harbor TSP.

Enclosure 2. Historic Resources with ½ Mile of the APE.

USN Number	Site Name	Description	NRHP Eligibility
10303.000077	H.M.S. Culloden Shipwreck Site	A British Man-of-War that ran aground on January 24, 1781	Listed
10303.000140	Culloden Point Prehistoric Sites	4 Woodland Period Prehistoric sites. All lithic scatters with buried components.	Eligible
10303.000192	Culloden Point IV Prehistoric Site	4 Woodland Period Prehistoric sites. All lithic scatters with buried components.	Undetermined
10303.000819	Culloden Point Area F extension (Pedersen/Dixson)	Prehistoric with human remains. Features, lithic scatter with fires cracked rock, ceramics, and animal bones.	Undetermined
10303.000816	Star Island Prehistoric Site	Lithic scatter with projectile points.	Eligible
10303.000724	Montauk USCG Station Bldg., Multi-Mission Bldg.	Combined administration/barracks US Coast Guard building constructed in 1939 in Napeague, NY, and relocated to current location in 1954	Eligible
10303.000837	Engineering/Boat Maintenance Building	Axillary building to the Multi-Mission Building. Has more alterations than the Multi-Mission Building.	Eligible, USCG recommends as ineligible
10303.000838	Unaccompanied Personnel Housing (UPH)	Building constructed on USCG complex in 1989.	Not Eligible
10303.000185	Caleb Bragg Estate	Historic residential property built in 1929 containing 7 buildings, circular driveway, tennis courts, docks, parking lot and landscaping.	Listed



REPLY TO
ATTENTION OF

DEPARTMENT OF THE ARMY
U.S. ARMY CORPS OF ENGINEERS, NEW YORK DISTRICT
JACOB K. JAVITS FEDERAL BUILDING
26 FEDERAL PLAZA
NEW YORK NEW YORK 10278-0090

26 July 2019

Environmental Assessment Section
Environmental Analysis Branch

Erin Thompson
Director of Cultural Resources & Section 106
Delaware Nation
PO Box 825
Anadarko, OK 73005

Dear Ms. Thompson,

The U.S. Army Corps of Engineers, New York District (Corps) has prepared a Draft Feasibility Report and Environmental Assessment for the Lake Montauk Harbor Navigation Improvements study. The proposed project's purpose is to improve navigation in Lake Montauk Harbor, Suffolk County, New York and the inlet connecting it to Block Island Sound. The Tentatively Selected Plan (TSP) includes deepening the federal channel to -17 ft. MLLW (mean lower low water), creating a deposition basin on the eastern side of the channel to the same depth, and placing the dredged materials on the downdrift beach from the inlet (Enclosure 1).

The cultural resources investigation for Lake Montauk Harbor has included documentary research, which consisted of gathering existing data from previous cultural resource studies and an examination of existing digital databases held by the New York State Historic Preservation Office (NYSHPO) on the Cultural Resources Information System (CRIS).

Undertaking

The TSP consists of three elements, deepening the federal navigation channel, adding the deposition basin, and placing the dredged materials on the downdrift beach. The federal channel is presently 150 wide and authorized to -12 ft. MLLW. The TSP would keep the same channel footprint, but deepen it by five feet to -17 ft. MLLW. The deposition basin would be excavated adjacent to the channel to protect it by providing a space where sediment can be deposited before entering the channel. This is an advanced maintenance technique that allows the channel to be dredged less frequently, since the channel infills slower. The proposed deposition basin is on the eastern side of the channel and is 100 ft. wide and runs for 1,800 ft. from the mouth of the channel into the inner channel (see Enclosure 1). It will be dredged to the same depth of the federal channel, -17 ft. MLLW. Currently, the Corps' Operations Division has been dredging a 50 ft. wide deposition basin along the federal channel for the length that is adjacent to the east jetty of the inlet. The current deposition basin is shorter and narrower than the proposed deposition basin. The last element of the TSP is the placement of the dredged sand on the downdrift beach from the inlet. The dredged material will be placed in an area extending 3,000 feet from the western inlet jetty and measure 46 feet wide through its length. Presently, the dredged materials are placed within a few hundred feet of the west jetty on the downdrift beach. The TSP proposes to extend the length of beach where the sand is placed in order to provide more storm risk management to the houses uphill from the beach.

Area of Potential Effect (APE)

The APE includes the federal channel, deposition basin, and downdrift beach for a length of 3,000 ft. The APE for archaeology, historic structures and historic landscapes has been defined as the footprint of these elements. There are no staging areas or access roads, since the dredging will be done from a barge in the water, and then the dredged sediment will be pumped onto the beach.

Identification and Evaluation

Inside APE: There are no sites located within the APE.

Within ½ Mile of the APE: There are nine sites within a half a mile of the APE (Enclosure 2). Four are above-ground, four are under-ground, and one is under-water.

Above-Ground: The four above ground sites include the Caleb Bragg Estate and three U.S. Coast Guard buildings. The Caleb Bragg Estate is listed on the National Register of Historic Places (NRHP) and is about 150 feet from the federal channel. The US Coast Guard buildings are about 350 feet from the federal channel. Two of these Coast Guard buildings are eligible for the NRHP while the third is ineligible.

Under-Ground: The four under-ground sites include the Star Island Prehistoric Site, the Culloden Point Prehistoric Sites, Culloden Point IV Prehistoric Site, and Culloden Point Area F Extension. The Star Island Prehistoric Site and Culloden Point Prehistoric Sites are eligible for the NRHP, while the other two sites have undetermined eligibility.

Under-Water: The submerged site is the NRHP listed wreck of the *H.M.S. Culloden*, a British Man-of War that ran aground in 1781.

Assessment of Effects

Above-Ground: The Caleb Bragg Estate and Coast Guard Buildings are located on Star Island to the south of the federal channel (see Enclosure 1). The federal channel comes near to Star Island, but since all activity will be taking place in the water to dredge the federal channel, and no activity on land, the resources on Star Island will not be affected. It is the Corps opinion that the Undertaking will have no adverse effect on any of the above-ground resources.

Under-Ground: The Star Island Prehistoric site is located on Star Island, which will not be affected by dredging the channel. The other three sites: Culloden Point Prehistoric Sites, Culloden Point IV Prehistoric Site, and Culloden Point Area F Extension are all located on Culloden Point. These sites are to the west and upland of the sand placement area and will not be affected. It is the Corps opinion that the Undertaking will have no adverse effect on any of the under-ground resources.

Under-Water: The *H.M.S. Culloden* shipwreck site is located offshore about ½ mile west of the sand placement area. The dredged sand will be placed in a specific location on the beach, and will not affect this shipwreck. It is the Corps opinion that the Undertaking will have no adverse effect on the *H.M.S. Culloden* Shipwreck Site.

The Corps has prepared a Draft Feasibility Report and Environmental Assessment (DFR/EA) for this project and can be found at: <https://www.nan.usace.army.mil/Missions/Civil-Works/Projects-in-New-York/Lake-Montauk-Harbor-Feasibility-Study/>. Public review of the report will be

available for 30 days until August 25, 2019. Please review this documentation and provide Section 106 comments, pursuant to 36 CFR 800.4(d)(1). If you or your staff require additional information or have any questions, please contact Anna Jansson, Project Archaeologist, at 917-790-8623. Thank you for your assistance and consideration.

Sincerely,

Peter M. Weppler
Chief, Environmental Analysis Branch

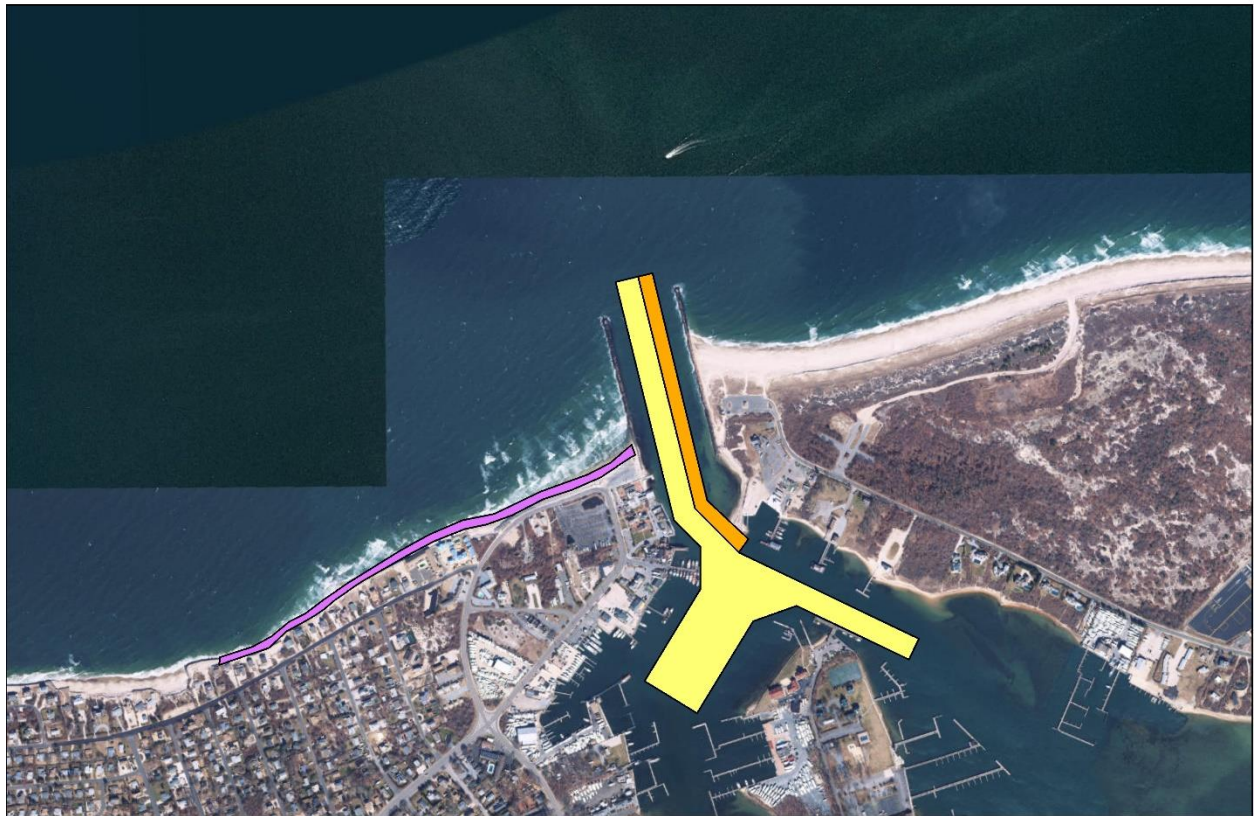
Enclosures

Legend

- Beach_Fill
- Deposition_Basin
- Federal_Channel

Lake Montauk Harbor Area of Potential Affect

970 485 0 970 Feet



Enclosure 1. Area of Potential Effect of the Lake Montauk Harbor TSP.

Enclosure 2. Historic Resources with ½ Mile of the APE.

USN Number	Site Name	Description	NRHP Eligibility
10303.000077	H.M.S. Culloden Shipwreck Site	A British Man-of-War that ran aground on January 24, 1781	Listed
10303.000140	Culloden Point Prehistoric Sites	4 Woodland Period Prehistoric sites. All lithic scatters with buried components.	Eligible
10303.000192	Culloden Point IV Prehistoric Site	4 Woodland Period Prehistoric sites. All lithic scatters with buried components.	Undetermined
10303.000819	Culloden Point Area F extension (Pedersen/Dixson)	Prehistoric with human remains. Features, lithic scatter with fires cracked rock, ceramics, and animal bones.	Undetermined
10303.000816	Star Island Prehistoric Site	Lithic scatter with projectile points.	Eligible
10303.000724	Montauk USCG Station Bldg., Multi-Mission Bldg.	Combined administration/barracks US Coast Guard building constructed in 1939 in Napeague, NY, and relocated to current location in 1954	Eligible
10303.000837	Engineering/Boat Maintenance Building	Axillary building to the Multi-Mission Building. Has more alterations than the Multi-Mission Building.	Eligible, USCG recommends as ineligible
10303.000838	Unaccompanied Personnel Housing (UPH)	Building constructed on USCG complex in 1989.	Not Eligible
10303.000185	Caleb Bragg Estate	Historic residential property built in 1929 containing 7 buildings, circular driveway, tennis courts, docks, parking lot and landscaping.	Listed



REPLY TO
ATTENTION OF

DEPARTMENT OF THE ARMY
U.S. ARMY CORPS OF ENGINEERS, NEW YORK DISTRICT
JACOB K. JAVITS FEDERAL BUILDING
26 FEDERAL PLAZA
NEW YORK NEW YORK 10278-0090

26 July 2019

Environmental Assessment Section
Environmental Analysis Branch

Chief Harry B. Wallace
Unkechaug Nation
207 Poospansk Lane
Mastic, NY 11950

Dear Chief Wallace,

The U.S. Army Corps of Engineers, New York District (Corps) has prepared a Draft Feasibility Report and Environmental Assessment for the Lake Montauk Harbor Navigation Improvements study. The proposed project's purpose is to improve navigation in Lake Montauk Harbor, Suffolk County, New York and the inlet connecting it to Block Island Sound. The Tentatively Selected Plan (TSP) includes deepening the federal channel to -17 ft. MLLW (mean lower low water), creating a deposition basin on the eastern side of the channel to the same depth, and placing the dredged materials on the downdrift beach from the inlet (Enclosure 1).

The cultural resources investigation for Lake Montauk Harbor has included documentary research, which consisted of gathering existing data from previous cultural resource studies and an examination of existing digital databases held by the New York State Historic Preservation Office (NYSHPO) on the Cultural Resources Information System (CRIS).

Undertaking

The TSP consists of three elements, deepening the federal navigation channel, adding the deposition basin, and placing the dredged materials on the downdrift beach. The federal channel is presently 150 wide and authorized to -12 ft. MLLW. The TSP would keep the same channel footprint, but deepen it by five feet to -17 ft. MLLW. The deposition basin would be excavated adjacent to the channel to protect it by providing a space where sediment can be deposited before entering the channel. This is an advanced maintenance technique that allows the channel to be dredged less frequently, since the channel infills slower. The proposed deposition basin is on the eastern side of the channel and is 100 ft. wide and runs for 1,800 ft. from the mouth of the channel into the inner channel (see Enclosure 1). It will be dredged to the same depth of the federal channel, -17 ft. MLLW. Currently, the Corps' Operations Division has been dredging a 50 ft. wide deposition basin along the federal channel for the length that is adjacent to the east jetty of the inlet. The current deposition basin is shorter and narrower than the proposed deposition basin. The last element of the TSP is the placement of the dredged sand on the downdrift beach from the inlet. The dredged material will be placed in an area extending 3,000 feet from the western inlet jetty and measure 46 feet wide through its length. Presently, the dredged materials are placed within a few hundred feet of the west jetty on the downdrift beach. The TSP proposes to extend the length of beach where the sand is placed in order to provide more storm risk management to the houses uphill from the beach.

Area of Potential Effect (APE)

The APE includes the federal channel, deposition basin, and downdrift beach for a length of 3,000 ft. The APE for archaeology, historic structures and historic landscapes has been defined as the footprint of these elements. There are no staging areas or access roads, since the dredging will be done from a barge in the water, and then the dredged sediment will be pumped onto the beach.

Identification and Evaluation

Inside APE: There are no sites located within the APE.

Within ½ Mile of the APE: There are nine sites within a half a mile of the APE (Enclosure 2). Four are above-ground, four are under-ground, and one is under-water.

Above-Ground: The four above ground sites include the Caleb Bragg Estate and three U.S. Coast Guard buildings. The Caleb Bragg Estate is listed on the National Register of Historic Places (NRHP) and is about 150 feet from the federal channel. The US Coast Guard buildings are about 350 feet from the federal channel. Two of these Coast Guard buildings are eligible for the NRHP while the third is ineligible.

Under-Ground: The four under-ground sites include the Star Island Prehistoric Site, the Culloden Point Prehistoric Sites, Culloden Point IV Prehistoric Site, and Culloden Point Area F Extension. The Star Island Prehistoric Site and Culloden Point Prehistoric Sites are eligible for the NRHP, while the other two sites have undetermined eligibility.

Under-Water: The submerged site is the NRHP listed wreck of the *H.M.S. Culloden*, a British Man-of War that ran aground in 1781.

Assessment of Effects

Above-Ground: The Caleb Bragg Estate and Coast Guard Buildings are located on Star Island to the south of the federal channel (see Enclosure 1). The federal channel comes near to Star Island, but since all activity will be taking place in the water to dredge the federal channel, and no activity on land, the resources on Star Island will not be affected. It is the Corps opinion that the Undertaking will have no adverse effect on any of the above-ground resources.

Under-Ground: The Star Island Prehistoric site is located on Star Island, which will not be affected by dredging the channel. The other three sites: Culloden Point Prehistoric Sites, Culloden Point IV Prehistoric Site, and Culloden Point Area F Extension are all located on Culloden Point. These sites are to the west and upland of the sand placement area and will not be affected. It is the Corps opinion that the Undertaking will have no adverse effect on any of the under-ground resources.

Under-Water: The *H.M.S. Culloden* shipwreck site is located offshore about ½ mile west of the sand placement area. The dredged sand will be placed in a specific location on the beach, and will not affect this shipwreck. It is the Corps opinion that the Undertaking will have no adverse effect on the *H.M.S. Culloden* Shipwreck Site.

The Corps has prepared a Draft Feasibility Report and Environmental Assessment (DFR/EA) for this project and can be found at: <https://www.nan.usace.army.mil/Missions/Civil-Works/Projects-in-New-York/Lake-Montauk-Harbor-Feasibility-Study/>. Public review of the report will be

available for 30 days until August 25, 2019. Please review this documentation and provide Section 106 comments, pursuant to 36 CFR 800.4(d)(1). If you or your staff require additional information or have any questions, please contact Anna Jansson, Project Archaeologist, at 917-790-8623. Thank you for your assistance and consideration.

Sincerely,

Peter M. Weppler
Chief, Environmental Analysis Branch

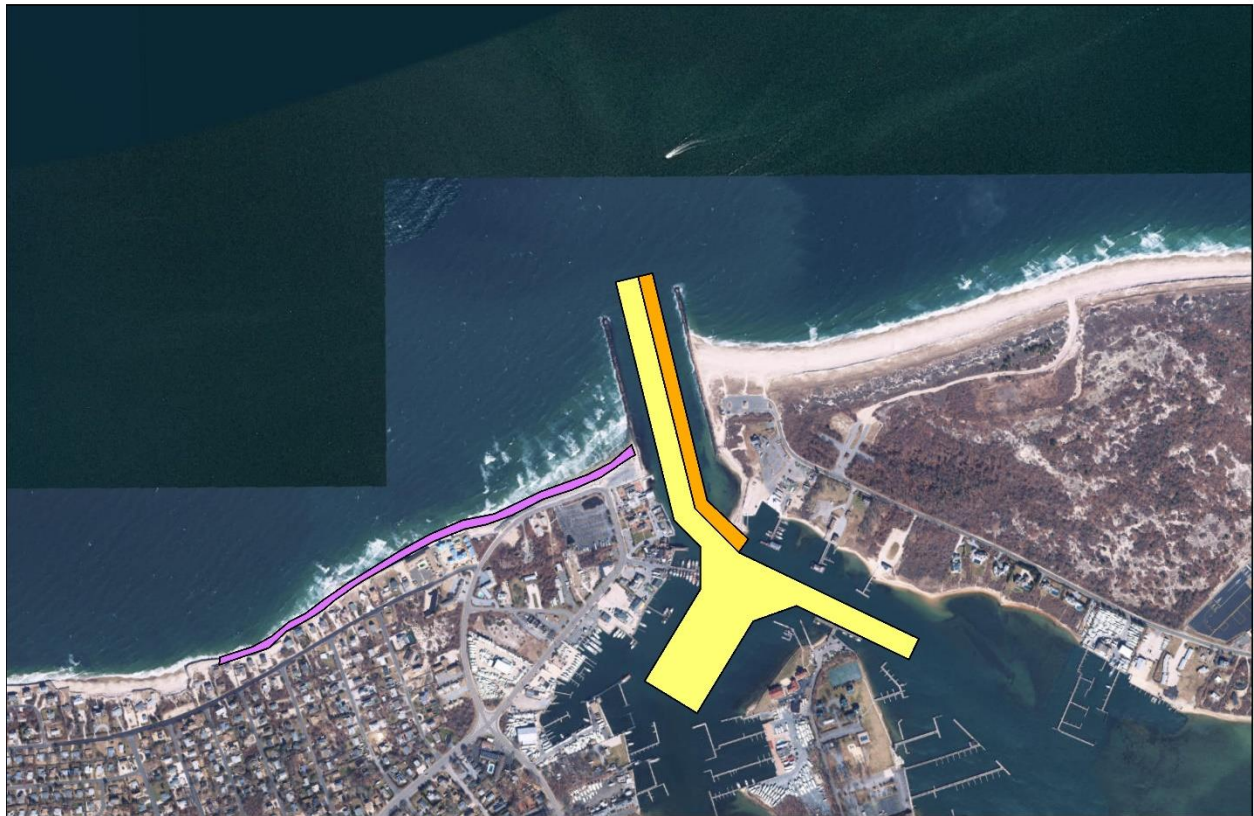
Enclosures

Legend

- Beach_Fill
- Deposition_Basin
- Federal_Channel

Lake Montauk Harbor Area of Potential Affect

970 485 0 970 Feet



Enclosure 1. Area of Potential Effect of the Lake Montauk Harbor TSP.

Enclosure 2. Historic Resources with ½ Mile of the APE.

USN Number	Site Name	Description	NRHP Eligibility
10303.000077	H.M.S. Culloden Shipwreck Site	A British Man-of-War that ran aground on January 24, 1781	Listed
10303.000140	Culloden Point Prehistoric Sites	4 Woodland Period Prehistoric sites. All lithic scatters with buried components.	Eligible
10303.000192	Culloden Point IV Prehistoric Site	4 Woodland Period Prehistoric sites. All lithic scatters with buried components.	Undetermined
10303.000819	Culloden Point Area F extension (Pedersen/Dixson)	Prehistoric with human remains. Features, lithic scatter with fires cracked rock, ceramics, and animal bones.	Undetermined
10303.000816	Star Island Prehistoric Site	Lithic scatter with projectile points.	Eligible
10303.000724	Montauk USCG Station Bldg., Multi-Mission Bldg.	Combined administration/barracks US Coast Guard building constructed in 1939 in Napeague, NY, and relocated to current location in 1954	Eligible
10303.000837	Engineering/Boat Maintenance Building	Axillary building to the Multi-Mission Building. Has more alterations than the Multi-Mission Building.	Eligible, USCG recommends as ineligible
10303.000838	Unaccompanied Personnel Housing (UPH)	Building constructed on USCG complex in 1989.	Not Eligible
10303.000185	Caleb Bragg Estate	Historic residential property built in 1929 containing 7 buildings, circular driveway, tennis courts, docks, parking lot and landscaping.	Listed



REPLY TO
ATTENTION OF

DEPARTMENT OF THE ARMY
U.S. ARMY CORPS OF ENGINEERS, NEW YORK DISTRICT
JACOB K. JAVITS FEDERAL BUILDING
26 FEDERAL PLAZA
NEW YORK NEW YORK 10278-0090

26 July 2019

Environmental Assessment Section
Environmental Analysis Branch

Mr. Daniel Mackay,
Deputy Commissioner
New York State Division for Historic Preservation
Peebles Island State Park
P.O. Box 189
Waterford, NY 12188-0189

Dear Mr. Mackay,

The U.S. Army Corps of Engineers, New York District (Corps) has prepared a Draft Feasibility Report and Environmental Assessment for the Lake Montauk Harbor Navigation Improvements study. The proposed project's purpose is to improve navigation in Lake Montauk Harbor, Suffolk County, New York and the inlet connecting it to Block Island Sound. The Tentatively Selected Plan (TSP) includes deepening the federal channel to -17 ft. MLLW (mean lower low water), creating a deposition basin on the eastern side of the channel to the same depth, and placing the dredged materials on the downdrift beach from the inlet (Enclosure 1).

The cultural resources investigation for Lake Montauk Harbor has included documentary research, which consisted of gathering existing data from previous cultural resource studies and an examination of existing digital databases held by your office on the Cultural Resources Information System (CRIS).

Undertaking

The TSP consists of three elements, deepening the federal navigation channel, adding the deposition basin, and placing the dredged materials on the downdrift beach. The federal channel is presently 150 wide and authorized to -12 ft. MLLW. The TSP would keep the same channel footprint, but deepen it by five feet to -17 ft. MLLW. The deposition basin would be excavated adjacent to the channel to protect it by providing a space where sediment can be deposited before entering the channel. This is an advanced maintenance technique that allows the channel to be dredged less frequently, since the channel infills slower. The proposed deposition basin is on the eastern side of the channel and is 100 ft. wide and runs for 1,800 ft. from the mouth of the channel into the inner channel (see Enclosure 1). It will be dredged to the same depth of the federal channel, -17 ft. MLLW. Currently, the Corps' Operations Division has been dredging a 50 ft. wide deposition basin along the federal channel for the length that is adjacent to the east jetty of the inlet. The current deposition basin is shorter and narrower than the proposed deposition basin. The last element of the TSP is the placement of the dredged sand on the downdrift beach from the inlet. The dredged material will be placed in an area extending 3,000 feet from the western inlet jetty and measure 46 feet wide through its length. Presently, the dredged materials are placed within a few hundred feet of the west jetty on the downdrift beach. The TSP proposes to extend the length of beach where the sand is placed in order to provide more storm risk management to the houses uphill from the beach.

Area of Potential Effect (APE)

The APE includes the federal channel, deposition basin, and downdrift beach for a length of 3,000 ft. The APE for archaeology, historic structures and historic landscapes has been defined as the footprint of these elements. There are no staging areas or access roads, since the dredging will be done from a barge in the water, and then the dredged sediment will be pumped onto the beach.

Identification and Evaluation

Inside APE: There are no sites located within the APE.

Within ½ Mile of the APE: There are nine sites within a half a mile of the APE (Enclosure 2). Four are above-ground, four are under-ground, and one is under-water.

Above-Ground: The four above ground sites include the Caleb Bragg Estate and three U.S. Coast Guard buildings. The Caleb Bragg Estate is listed on the National Register of Historic Places (NRHP) and is about 150 feet from the federal channel. The US Coast Guard buildings are about 350 feet from the federal channel. Two of these Coast Guard buildings are eligible for the NRHP while the third is ineligible.

Under-Ground: The four under-ground sites include the Star Island Prehistoric Site, the Culloden Point Prehistoric Sites, Culloden Point IV Prehistoric Site, and Culloden Point Area F Extension. The Star Island Prehistoric Site and Culloden Point Prehistoric Sites are eligible for the NRHP, while the other two sites have undetermined eligibility.

Under-Water: The submerged site is the NRHP listed wreck of the *H.M.S. Culloden*, a British Man-of War that ran aground in 1781.

Assessment of Effects

Above-Ground: The Caleb Bragg Estate and Coast Guard Buildings are located on Star Island to the south of the federal channel (see Enclosure 1). The federal channel comes near to Star Island, but since all activity will be taking place in the water to dredge the federal channel, and no activity on land, the resources on Star Island will not be affected. It is the Corps opinion that the Undertaking will have no adverse effect on any of the above-ground resources.

Under-Ground: The Star Island Prehistoric site is located on Star Island, which will not be affected by dredging the channel. The other three sites: Culloden Point Prehistoric Sites, Culloden Point IV Prehistoric Site, and Culloden Point Area F Extension are all located on Culloden Point. These sites are to the west and upland of the sand placement area and will not be affected. It is the Corps opinion that the Undertaking will have no adverse effect on any of the under-ground resources.

Under-Water: The *H.M.S. Culloden* shipwreck site is located offshore about ½ mile west of the sand placement area. The dredged sand will be placed in a specific location on the beach, and will not affect this shipwreck. It is the Corps opinion that the Undertaking will have no adverse effect on the *H.M.S. Culloden* Shipwreck Site.

The Corps has prepared a Draft Feasibility Report and Environmental Assessment (DFR/EA) for this project and can be found at: <https://www.nan.usace.army.mil/Missions/Civil-Works/Projects-in-New-York/Lake-Montauk-Harbor-Feasibility-Study/>. Public review of the report will be available for 30 days until August 25, 2019. Please review this documentation and provide Section 106 comments, pursuant to 36 CFR 800.4(d)(1). If you or your staff require additional information or have any questions, please contact Anna Jansson, Project Archaeologist, at 917-790-8623. Thank you for your assistance and consideration.

Sincerely,

Peter M. Weppler
Chief, Environmental Analysis Branch

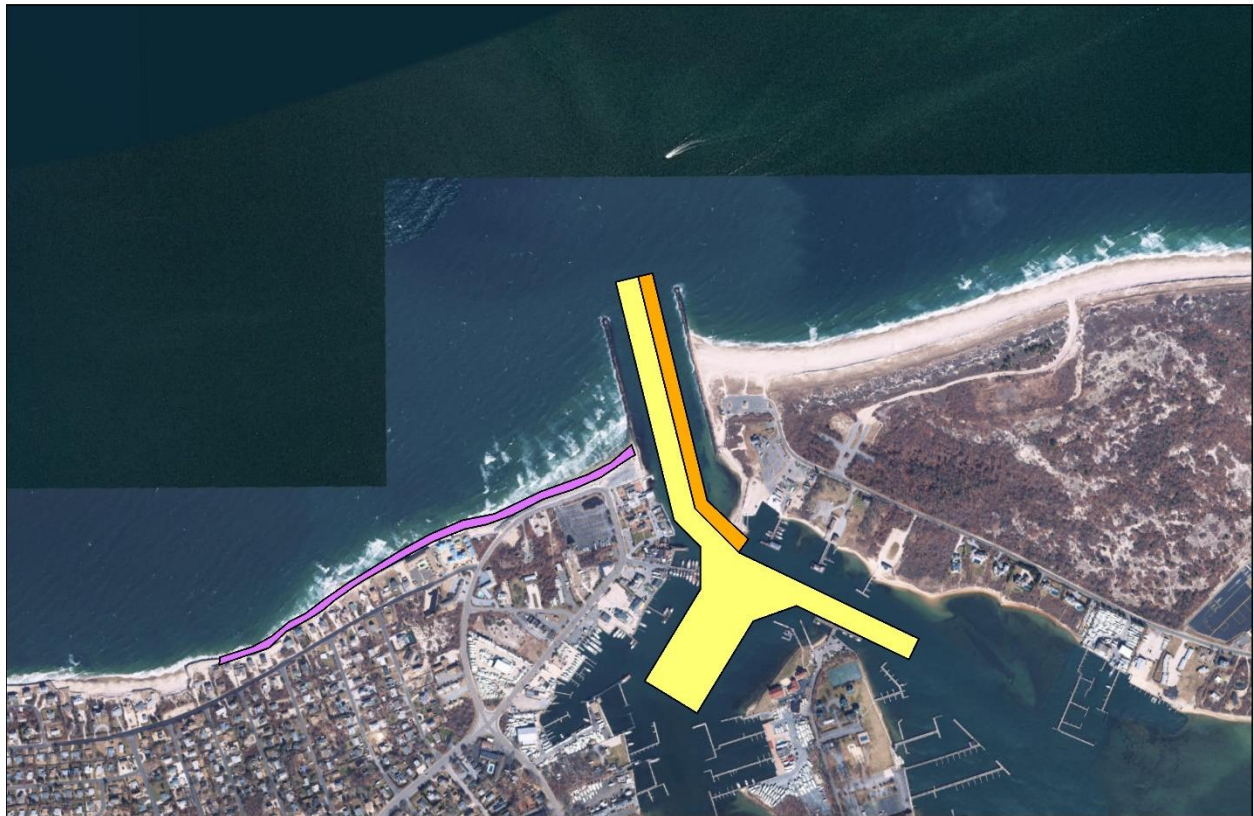
Enclosures

Legend

- Beach_Fill
- Deposition_Basin
- Federal_Channel

Lake Montauk Harbor Area of Potential Affect

970 485 0 970 Feet



Enclosure 1. Area of Potential Effect of the Lake Montauk Harbor TSP.

Enclosure 2. Historic Resources with ½ Mile of the APE.

USN Number	Site Name	Description	NRHP Eligibility
10303.000077	H.M.S. Culloden Shipwreck Site	A British Man-of-War that ran aground on January 24, 1781	Listed
10303.000140	Culloden Point Prehistoric Sites	4 Woodland Period Prehistoric sites. All lithic scatters with buried components.	Eligible
10303.000192	Culloden Point IV Prehistoric Site	4 Woodland Period Prehistoric sites. All lithic scatters with buried components.	Undetermined
10303.000819	Culloden Point Area F extension (Pedersen/Dixson)	Prehistoric with human remains. Features, lithic scatter with fires cracked rock, ceramics, and animal bones.	Undetermined
10303.000816	Star Island Prehistoric Site	Lithic scatter with projectile points.	Eligible
10303.000724	Montauk USCG Station Bldg., Multi-Mission Bldg.	Combined administration/barracks US Coast Guard building constructed in 1939 in Napeague, NY, and relocated to current location in 1954	Eligible
10303.000837	Engineering/Boat Maintenance Building	Axillary building to the Multi-Mission Building. Has more alterations than the Multi-Mission Building.	Eligible, USCG recommends as ineligible
10303.000838	Unaccompanied Personnel Housing (UPH)	Building constructed on USCG complex in 1989.	Not Eligible
10303.000185	Caleb Bragg Estate	Historic residential property built in 1929 containing 7 buildings, circular driveway, tennis courts, docks, parking lot and landscaping.	Listed



REPLY TO
ATTENTION OF

DEPARTMENT OF THE ARMY
U.S. ARMY CORPS OF ENGINEERS, NEW YORK DISTRICT
JACOB K. JAVITS FEDERAL BUILDING
26 FEDERAL PLAZA
NEW YORK NEW YORK 10278-0090

26 July 2019

Environmental Assessment Section
Environmental Analysis Branch

Susan Bachor
Historic Preservation Representative
Delaware Tribe of Indians
Special Assistant Eastern Office
P.O. Box 64
Pocono Lake, PA 18347

Dear Ms. Bachor,

The U.S. Army Corps of Engineers, New York District (Corps) has prepared a Draft Feasibility Report and Environmental Assessment for the Lake Montauk Harbor Navigation Improvements study. The proposed project's purpose is to improve navigation in Lake Montauk Harbor, Suffolk County, New York and the inlet connecting it to Block Island Sound. The Tentatively Selected Plan (TSP) includes deepening the federal channel to -17 ft. MLLW (mean lower low water), creating a deposition basin on the eastern side of the channel to the same depth, and placing the dredged materials on the downdrift beach from the inlet (Enclosure 1).

The cultural resources investigation for Lake Montauk Harbor has included documentary research, which consisted of gathering existing data from previous cultural resource studies and an examination of existing digital databases held by the New York State Historic Preservation Office on the Cultural Resources Information System (CRIS).

Undertaking

The TSP consists of three elements, deepening the federal navigation channel, adding the deposition basin, and placing the dredged materials on the downdrift beach. The federal channel is presently 150 wide and authorized to -12 ft. MLLW. The TSP would keep the same channel footprint, but deepen it by five feet to -17 ft. MLLW. The deposition basin would be excavated adjacent to the channel to protect it by providing a space where sediment can be deposited before entering the channel. This is an advanced maintenance technique that allows the channel to be dredged less frequently, since the channel infills slower. The proposed deposition basin is on the eastern side of the channel and is 100 ft. wide and runs for 1,800 ft. from the mouth of the channel into the inner channel (see Enclosure 1). It will be dredged to the same depth of the federal channel, -17 ft. MLLW. Currently, the Corps' Operations Division has been dredging a 50 ft. wide deposition basin along the federal channel for the length that is adjacent to the east jetty of the inlet. The current deposition basin is shorter and narrower than the proposed deposition basin. The last element of the TSP is the placement of the dredged sand on the downdrift beach from the inlet. The dredged material will be placed in an area extending 3,000 feet from the western inlet jetty and measure 46 feet wide through its length. Presently, the dredged materials are placed within a few hundred feet of the west jetty on the downdrift beach. The TSP proposes to extend the length of beach where the sand is placed in order to provide more storm risk management to the houses uphill from the beach.

Area of Potential Effect (APE)

The APE includes the federal channel, deposition basin, and downdrift beach for a length of 3,000 ft. The APE for archaeology, historic structures and historic landscapes has been defined as the footprint of these elements. There are no staging areas or access roads, since the dredging will be done from a barge in the water, and then the dredged sediment will be pumped onto the beach.

Identification and Evaluation

Inside APE: There are no sites located within the APE.

Within ½ Mile of the APE: There are nine sites within a half a mile of the APE (Enclosure 2). Four are above-ground, four are under-ground, and one is under-water.

Above-Ground: The four above ground sites include the Caleb Bragg Estate and three U.S. Coast Guard buildings. The Caleb Bragg Estate is listed on the National Register of Historic Places (NRHP) and is about 150 feet from the federal channel. The US Coast Guard buildings are about 350 feet from the federal channel. Two of these Coast Guard buildings are eligible for the NRHP while the third is ineligible.

Under-Ground: The four under-ground sites include the Star Island Prehistoric Site, the Culloden Point Prehistoric Sites, Culloden Point IV Prehistoric Site, and Culloden Point Area F Extension. The Star Island Prehistoric Site and Culloden Point Prehistoric Sites are eligible for the NRHP, while the other two sites have undetermined eligibility.

Under-Water: The submerged site is the NRHP listed wreck of the *H.M.S. Culloden*, a British Man-of War that ran aground in 1781.

Assessment of Effects

Above-Ground: The Caleb Bragg Estate and Coast Guard Buildings are located on Star Island to the south of the federal channel (see Enclosure 1). The federal channel comes near to Star Island, but since all activity will be taking place in the water to dredge the federal channel, and no activity on land, the resources on Star Island will not be affected. It is the Corps opinion that the Undertaking will have no adverse effect on any of the above-ground resources.

Under-Ground: The Star Island Prehistoric site is located on Star Island, which will not be affected by dredging the channel. The other three sites: Culloden Point Prehistoric Sites, Culloden Point IV Prehistoric Site, and Culloden Point Area F Extension are all located on Culloden Point. These sites are to the west and upland of the sand placement area and will not be affected. It is the Corps opinion that the Undertaking will have no adverse effect on any of the under-ground resources.

Under-Water: The *H.M.S. Culloden* shipwreck site is located offshore about ½ mile west of the sand placement area. The dredged sand will be placed in a specific location on the beach, and will not affect this shipwreck. It is the Corps opinion that the Undertaking will have no adverse effect on the *H.M.S. Culloden* Shipwreck Site.

The Corps has prepared a Draft Feasibility Report and Environmental Assessment (DFR/EA) for this project and can be found at: <https://www.nan.usace.army.mil/Missions/Civil-Works/Projects-in-New-York/Lake-Montauk-Harbor-Feasibility-Study/>. Public review of the report will be available for 30 days until August 25, 2019. Please review this documentation and provide Section 106 comments, pursuant to 36 CFR 800.4(d)(1). If you or your staff require additional information or have any questions, please contact Anna Jansson, Project Archaeologist, at 917-790-8623. Thank you for your assistance and consideration.

Sincerely,

Peter M. Wepler
Chief, Environmental Analysis Branch

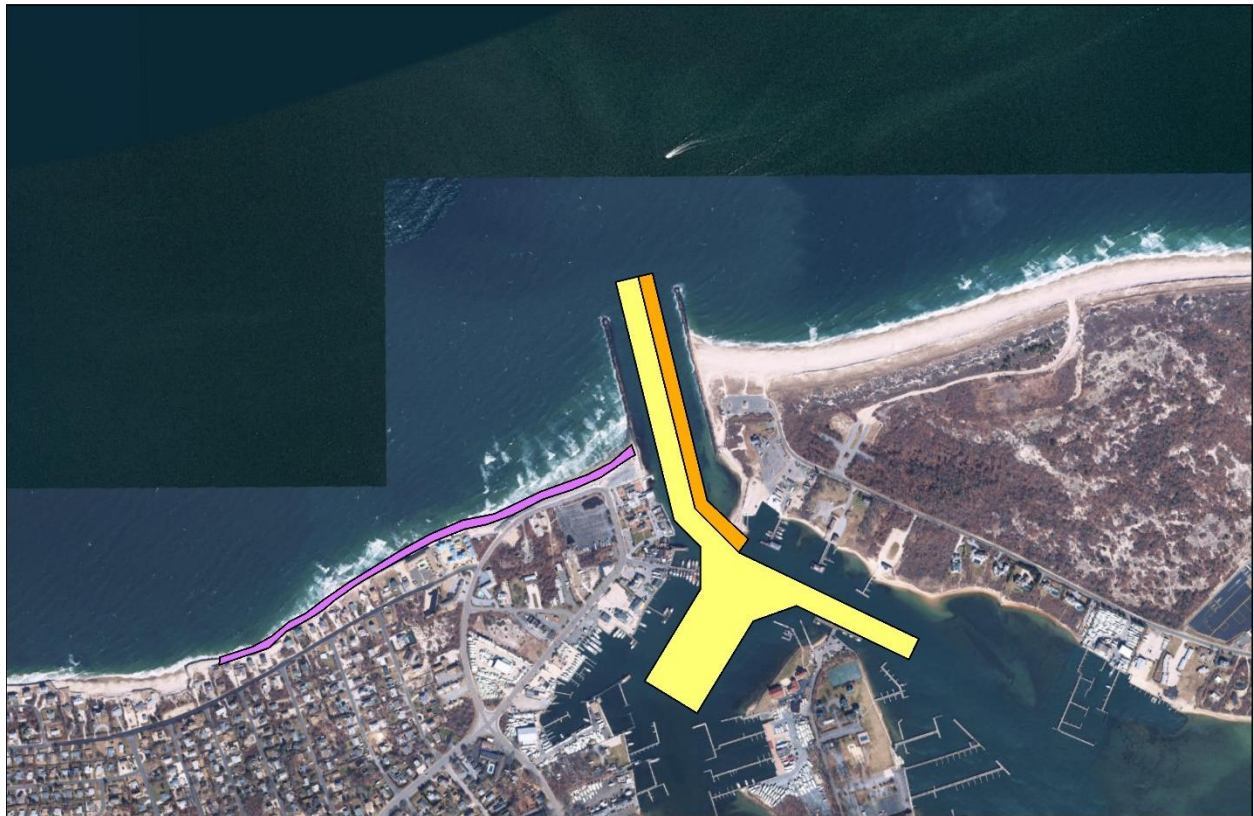
Enclosures

Legend

- Beach_Fill
- Deposition_Basin
- Federal_Channel

Lake Montauk Harbor Area of Potential Affect

970 485 0 970 Feet



Enclosure 1. Area of Potential Effect of the Lake Montauk Harbor TSP.

Enclosure 2. Historic Resources with ½ Mile of the APE.

USN Number	Site Name	Description	NRHP Eligibility
10303.000077	H.M.S. Culloden Shipwreck Site	A British Man-of-War that ran aground on January 24, 1781	Listed
10303.000140	Culloden Point Prehistoric Sites	4 Woodland Period Prehistoric sites. All lithic scatters with buried components.	Eligible
10303.000192	Culloden Point IV Prehistoric Site	4 Woodland Period Prehistoric sites. All lithic scatters with buried components.	Undetermined
10303.000819	Culloden Point Area F extension (Pedersen/Dixson)	Prehistoric with human remains. Features, lithic scatter with fires cracked rock, ceramics, and animal bones.	Undetermined
10303.000816	Star Island Prehistoric Site	Lithic scatter with projectile points.	Eligible
10303.000724	Montauk USCG Station Bldg., Multi-Mission Bldg.	Combined administration/barracks US Coast Guard building constructed in 1939 in Napeague, NY, and relocated to current location in 1954	Eligible
10303.000837	Engineering/Boat Maintenance Building	Axillary building to the Multi-Mission Building. Has more alterations than the Multi-Mission Building.	Eligible, USCG recommends as ineligible
10303.000838	Unaccompanied Personnel Housing (UPH)	Building constructed on USCG complex in 1989.	Not Eligible
10303.000185	Caleb Bragg Estate	Historic residential property built in 1929 containing 7 buildings, circular driveway, tennis courts, docks, parking lot and landscaping.	Listed